

Supplementary Materials: Characterizing complex networks using entropy-degree diagrams: unveiling changes in functional brain connectivity induced by Ayahuasca

A. Viol ^{1,2*}, Fernanda Palhano-Fontes ³, Heloisa Onias ³, Draulio B. de Araujo ³ Philipp Hövel ^{1,2,4} and G. M. Viswanathan ^{5,6}

1

2

3

4

5

6

7

8

9

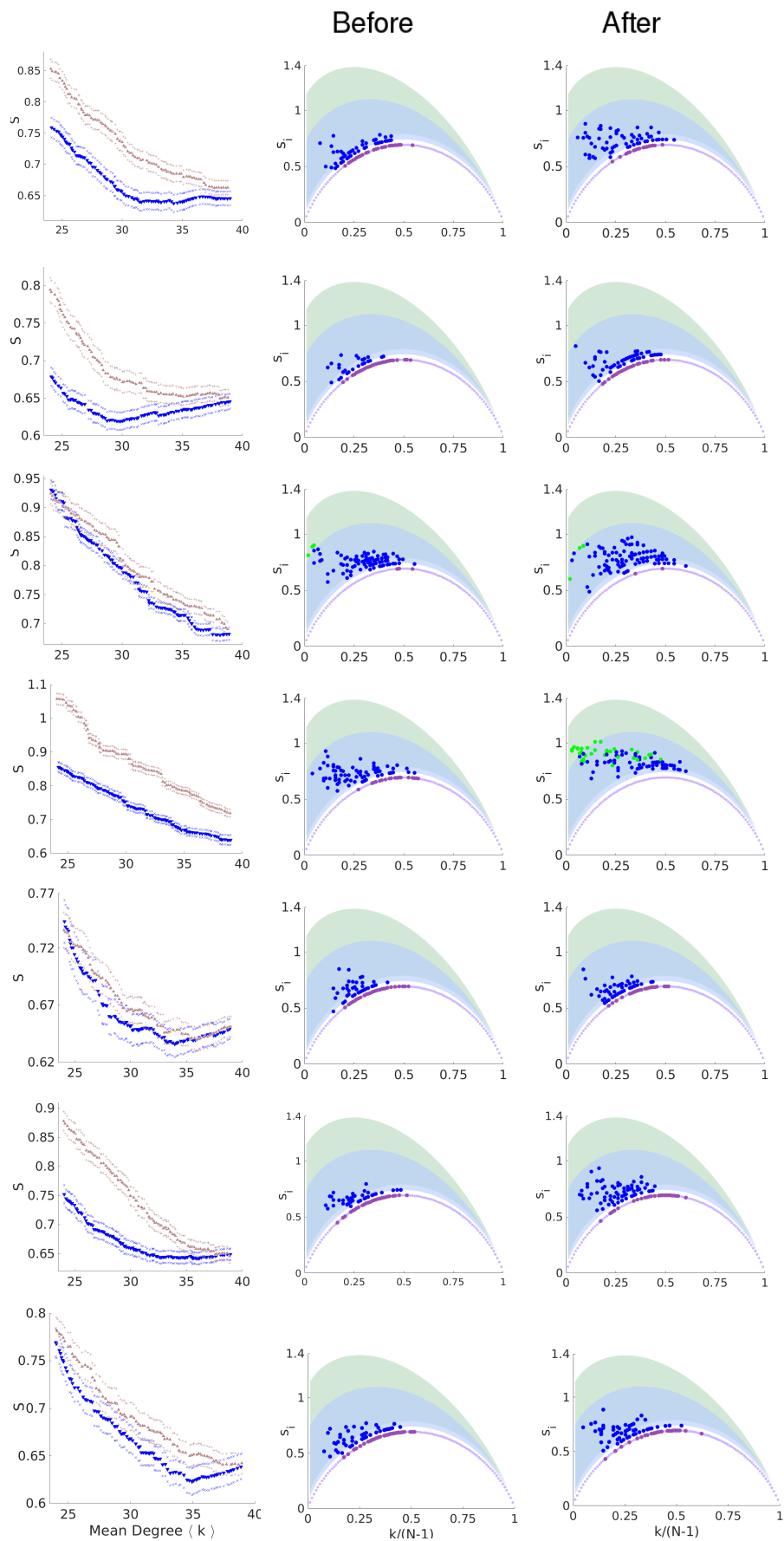


Figure 7. See next page for caption.

Figure S1. Geodesic entropy before and after Ayahuasca intake for all 7 subjects. The first column depicts the curves to characteristic geodesic entropy for networks with the mean degree from $\langle k \rangle = 24$ to $\langle k \rangle = 39$ for before (blue) and after (brown) Ayahuasca intake. The second and third columns show the entropy-degree diagram for before and after respectively for networks with mean degree $\langle k \rangle = 32$. Note an increase of geodesic entropy for all subjects.