

On the Use of Entropy to Improve Model Selection Criteria

Andrea Murari ¹, Emmanuele Peluso ², Francesco Cianfrani ², Pasquale Gaudio ² and Michele Lungaroni ^{2,*}

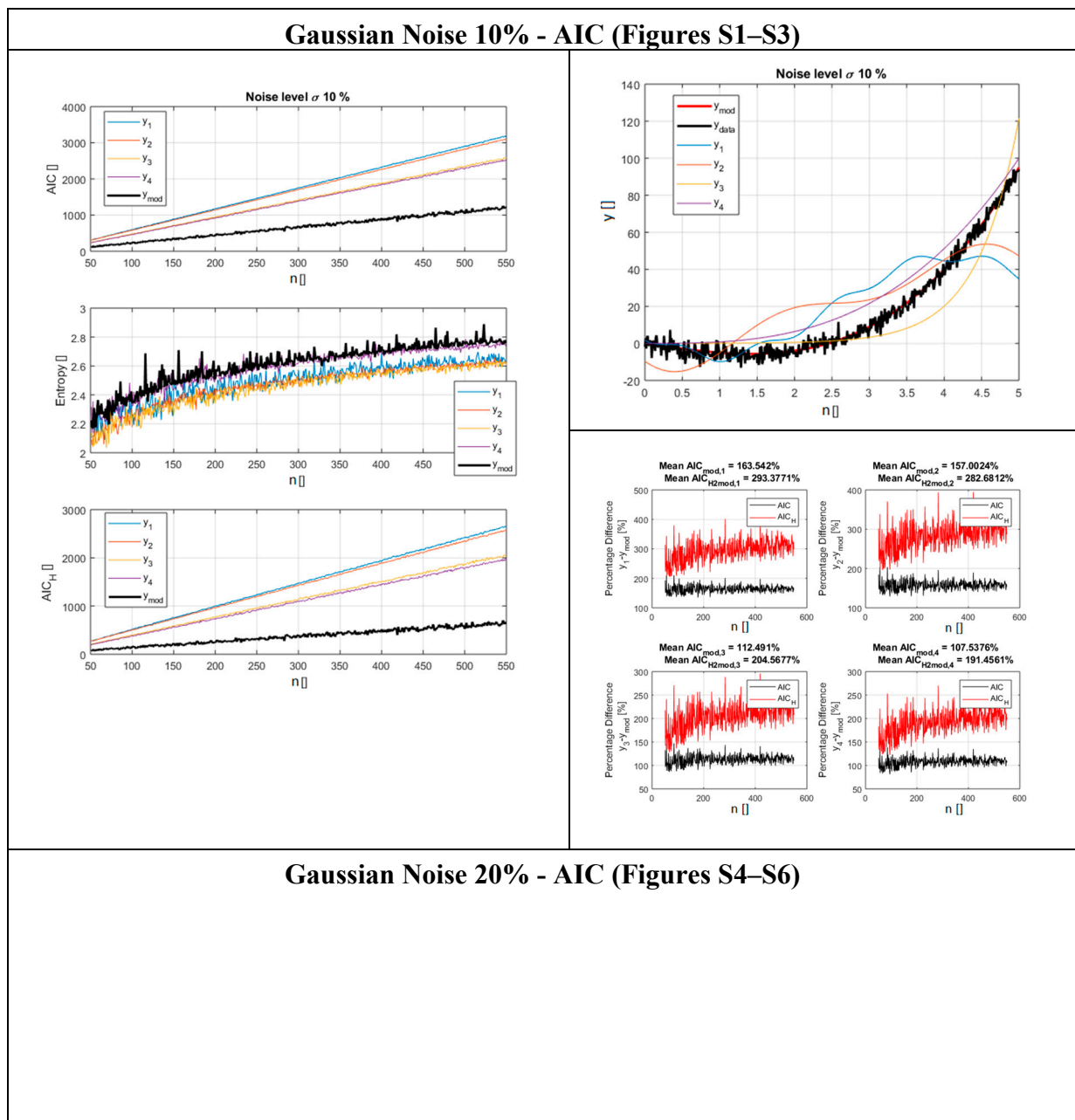
¹ Consorzio RFX (CNR, ENEA, INFN, Università di Padova, Acciaierie Venete SpA), 35127 Padova, Italy; andrea.murari@euro-fusion.org

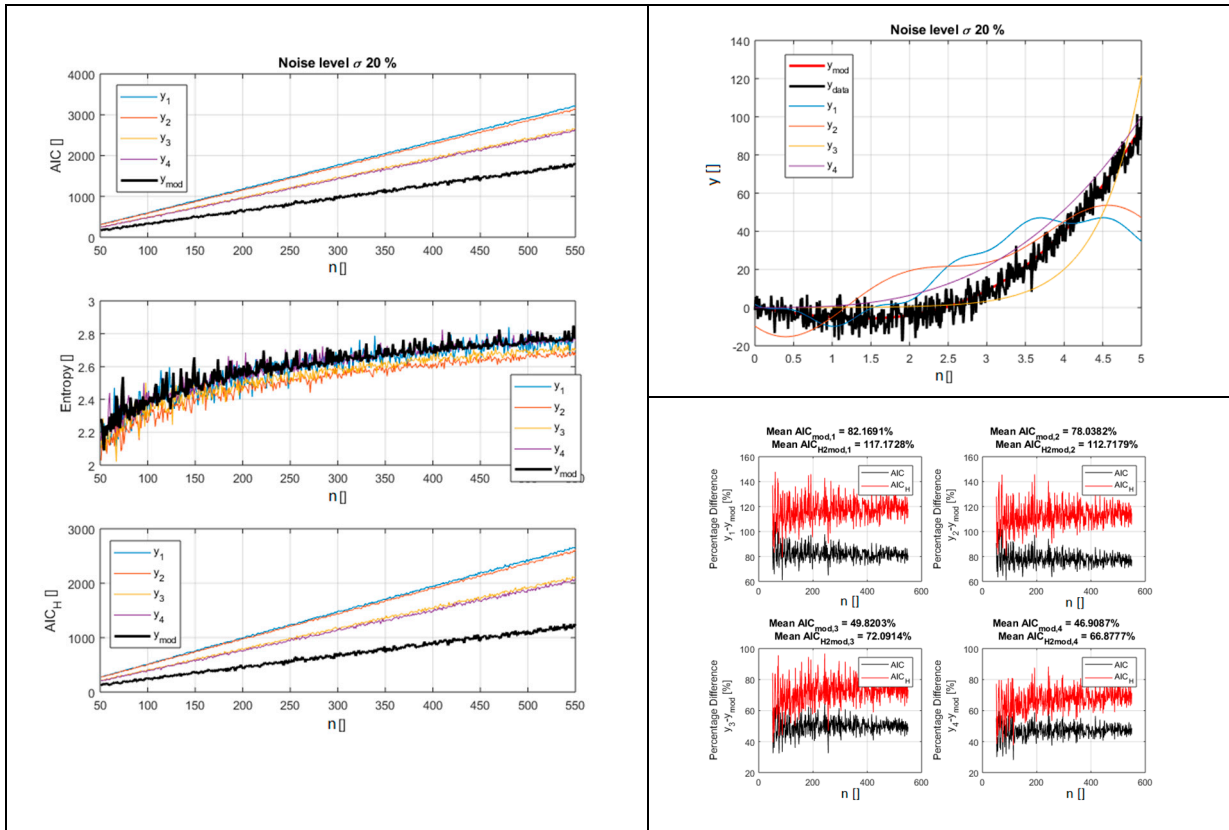
² Department of Industrial Engineering, University of Rome “Tor Vergata”, 00133 Roma, Italy; emmanuele.peluso@uniroma2.it (E.P.); francesco.cianfrani@uniroma2.it (F.C.); gaudio@ing.uniroma2.it; (P.G.)

* Correspondence: michele.lungaroni@uniroma2.it; Tel.: +39 0672597196

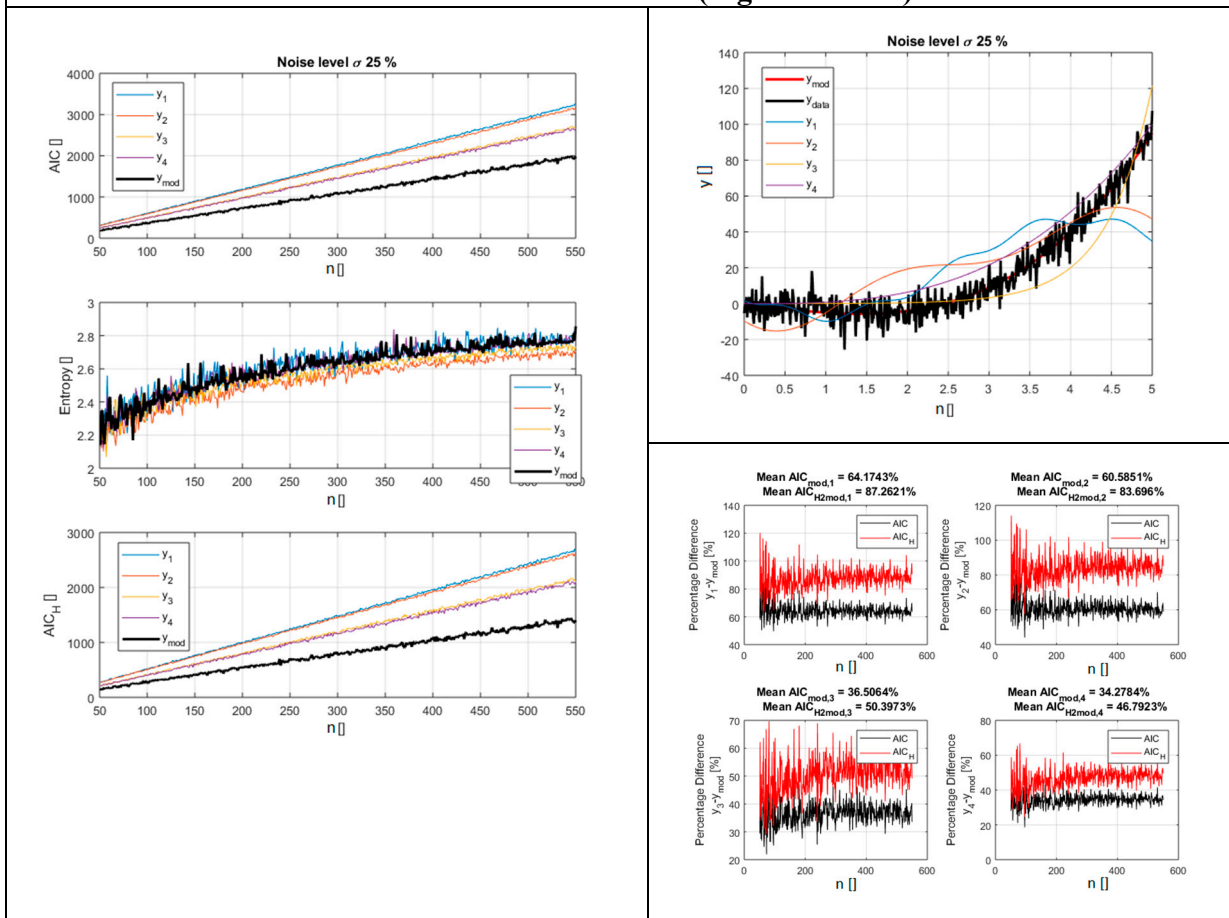
Received: 21 January 2019; Accepted: 10 April 2019; Published: date

1. Scan in the noise for the models belonging to the polynomial class.

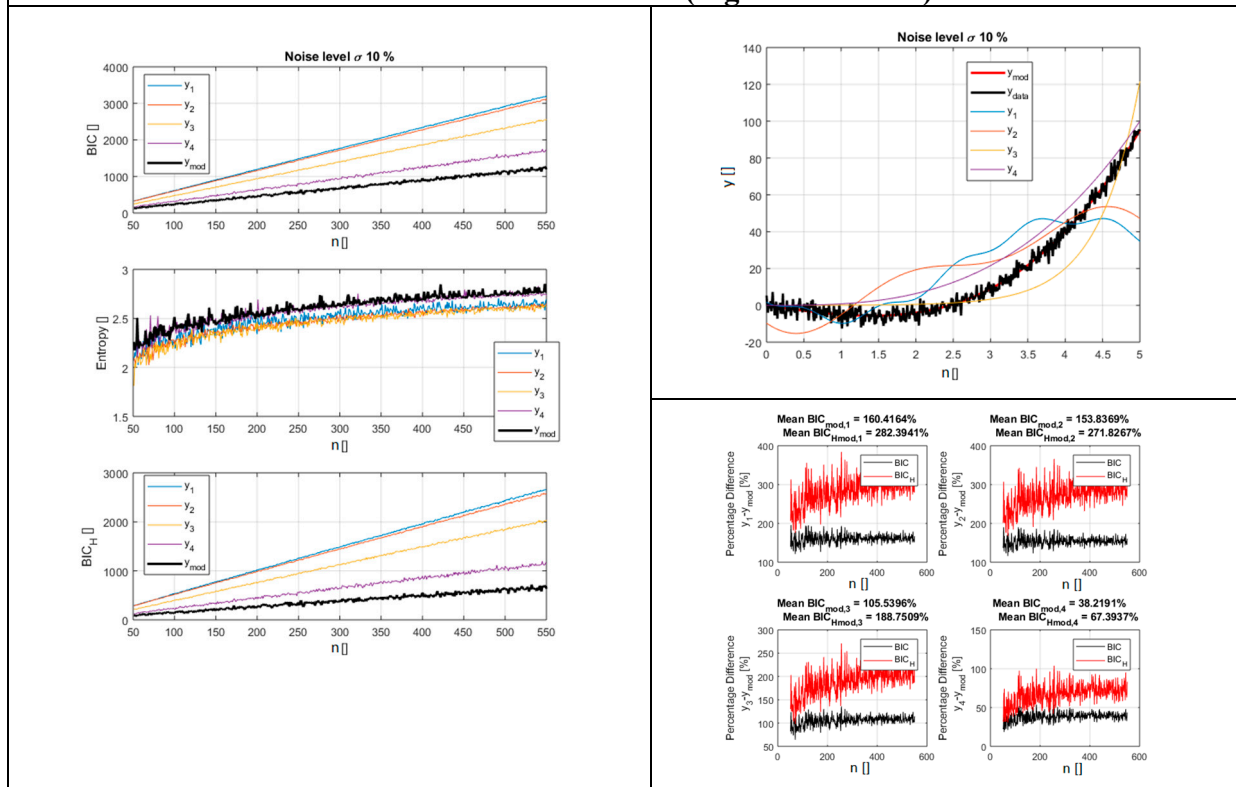




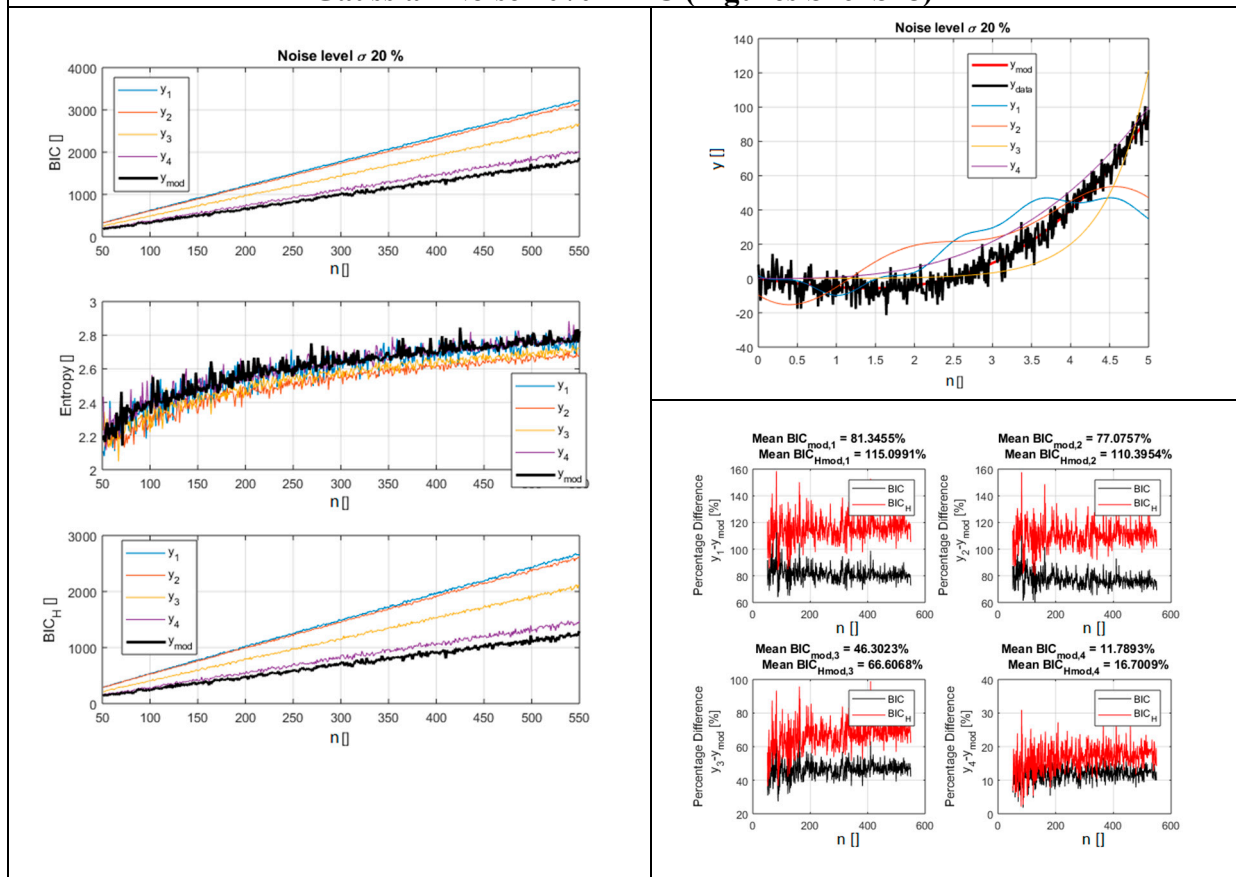
Gaussian Noise 25% - AIC (Figures S7–S9)



Gaussian Noise 10% - BIC (Figures S10–S12)

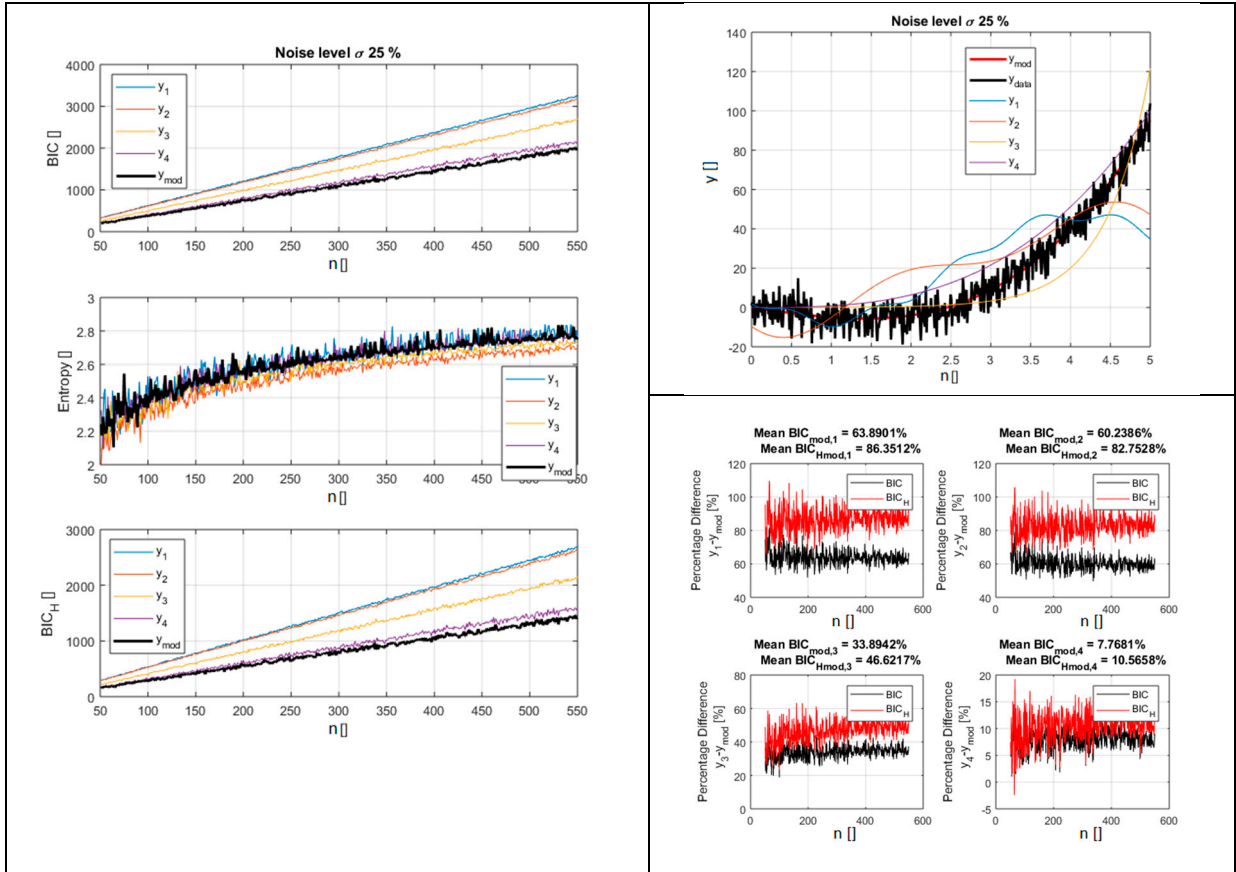


Gaussian Noise 20% - BIC (Figures S16–S18)

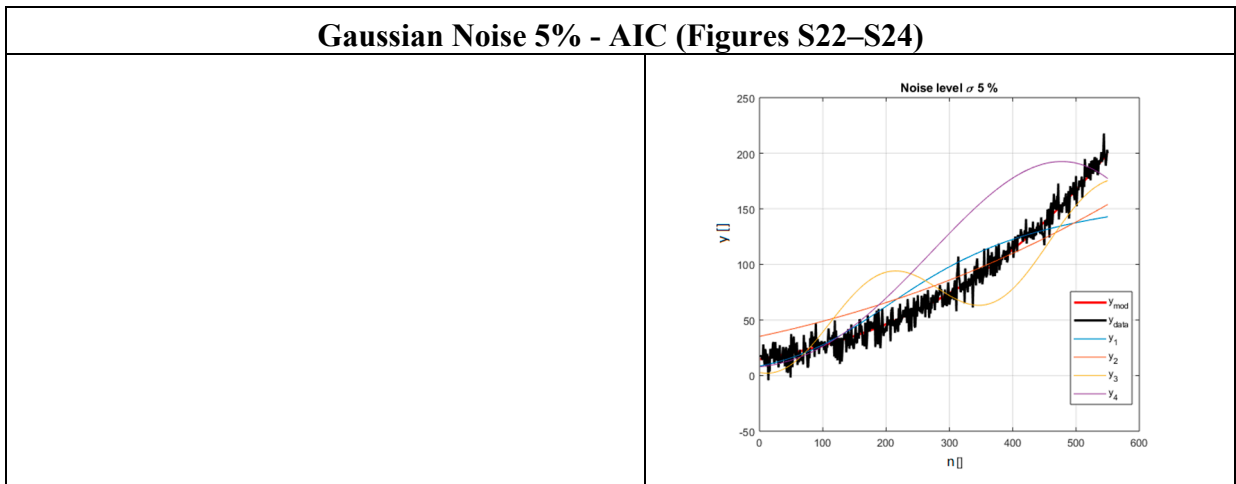


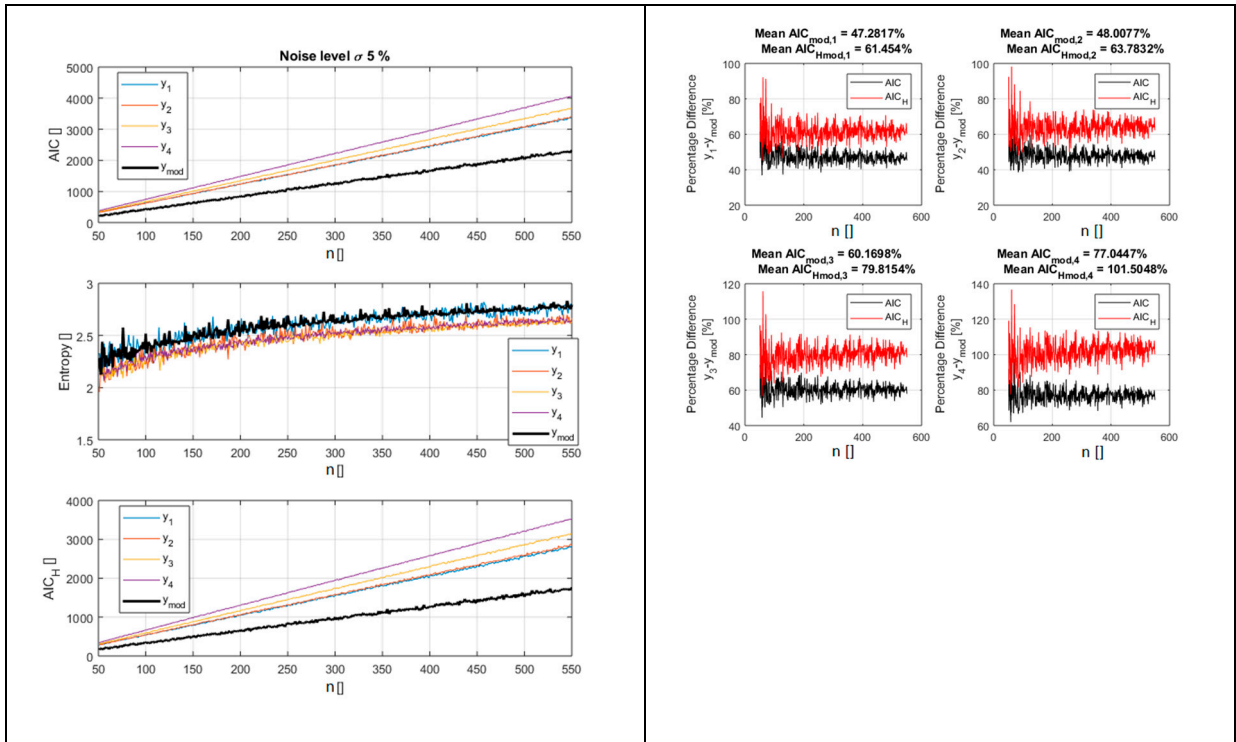
Gaussian Noise 25% - BIC (Figures S19–S21)



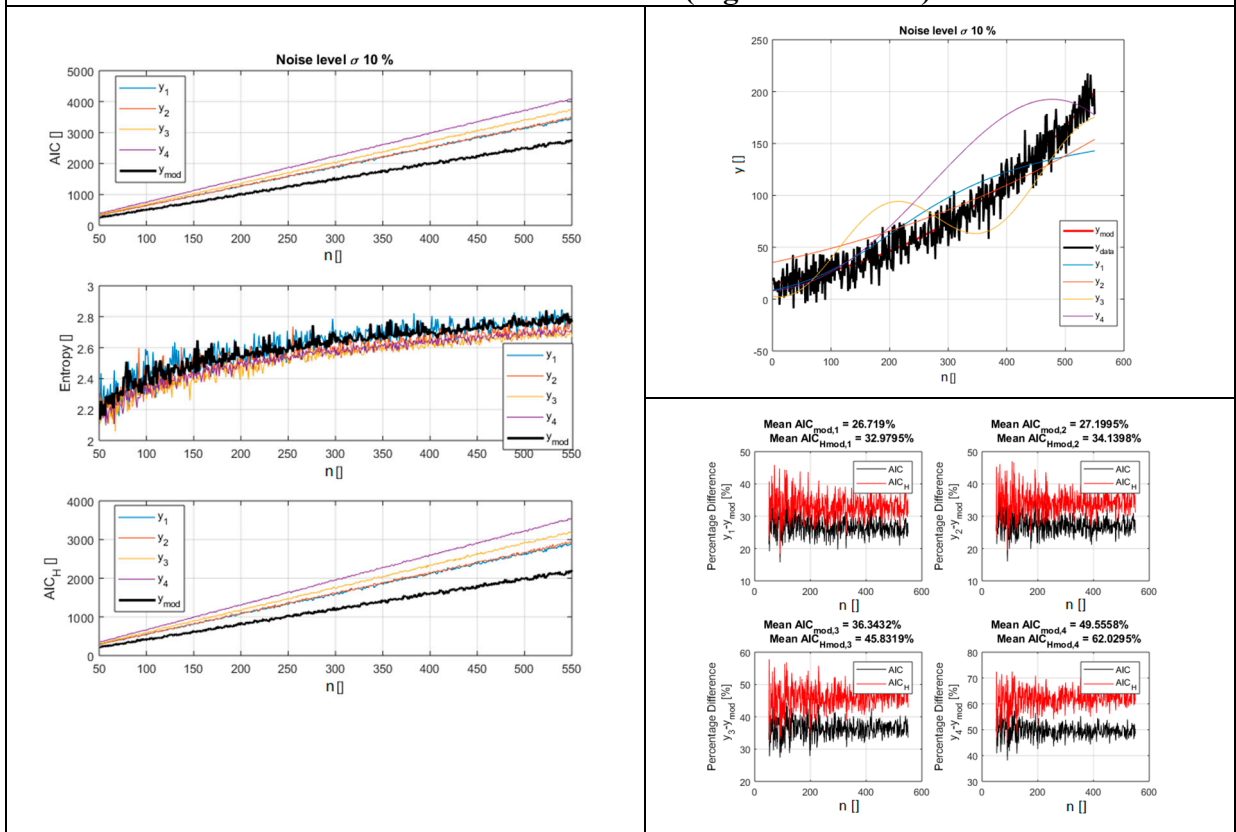


Appendix B: Scan in the noise for the models belonging to the class of Power Law monomials

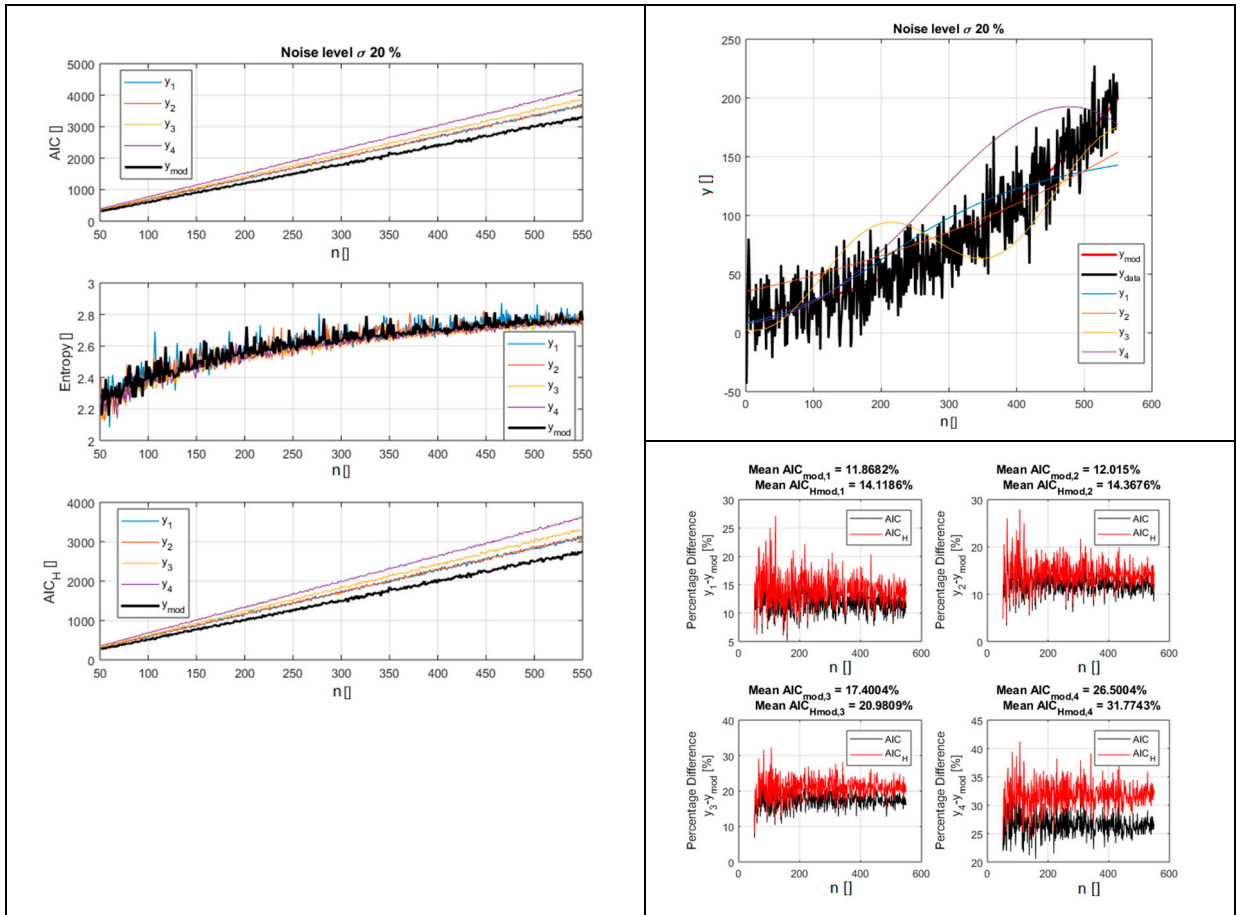




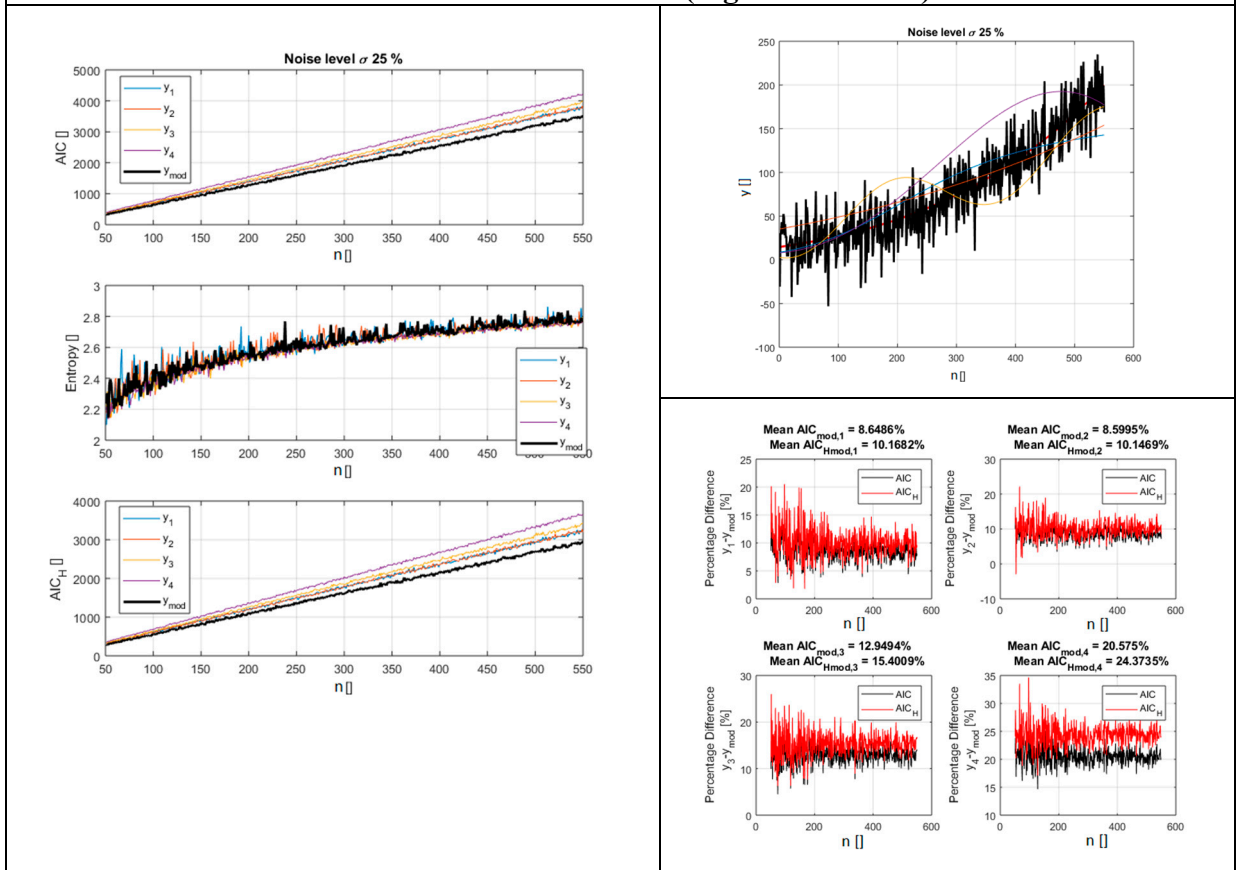
Gaussian Noise 10% - AIC (Figures S25–S27)



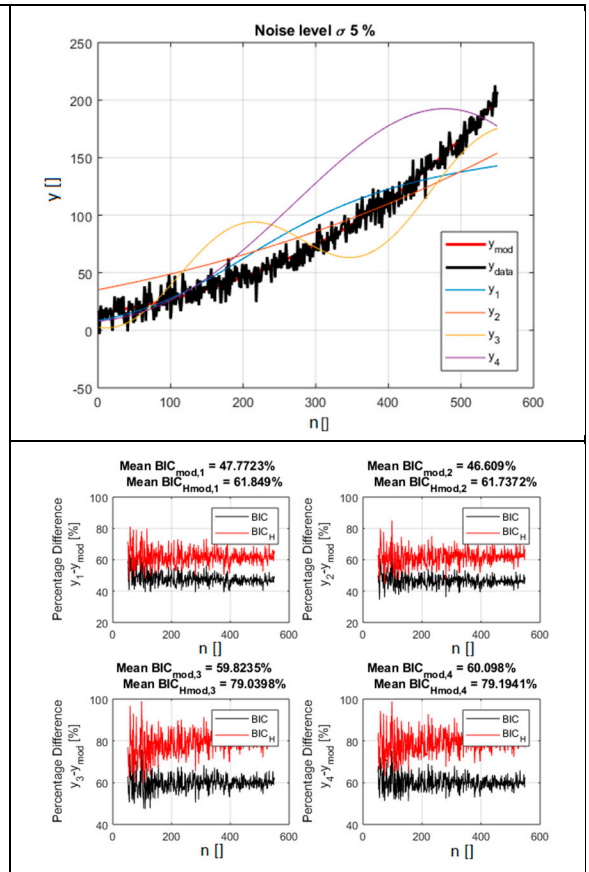
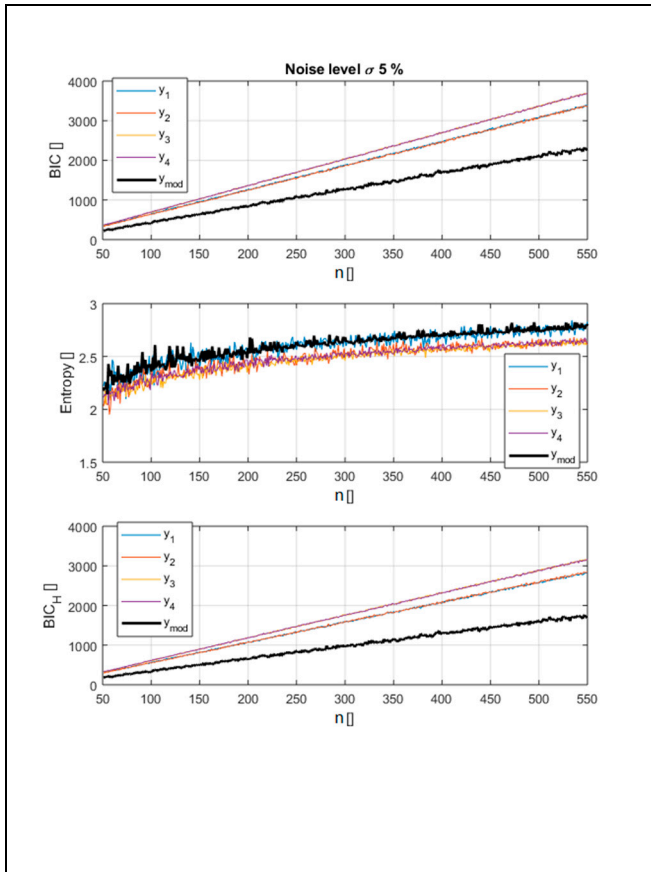
Gaussian Noise 20% - AIC (Figures S28–S30)



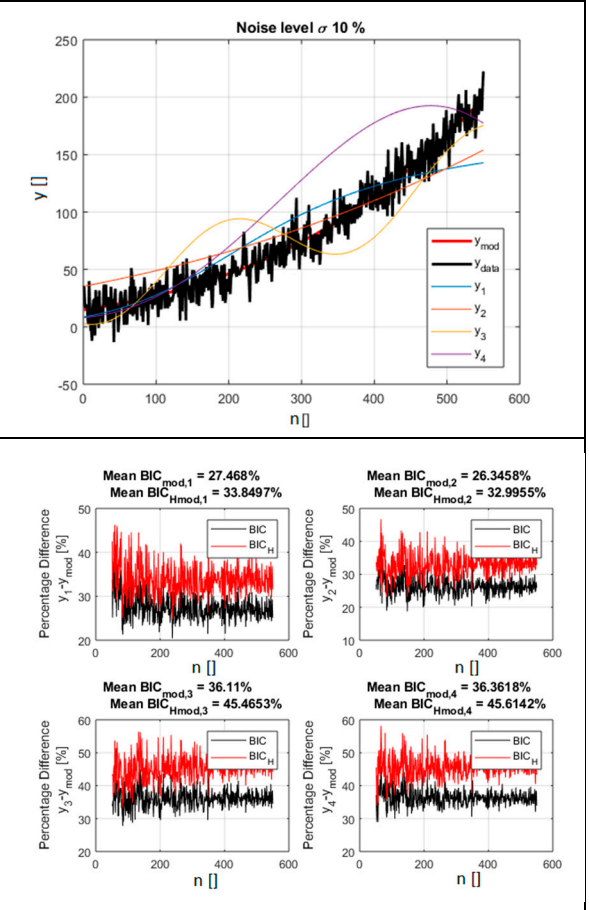
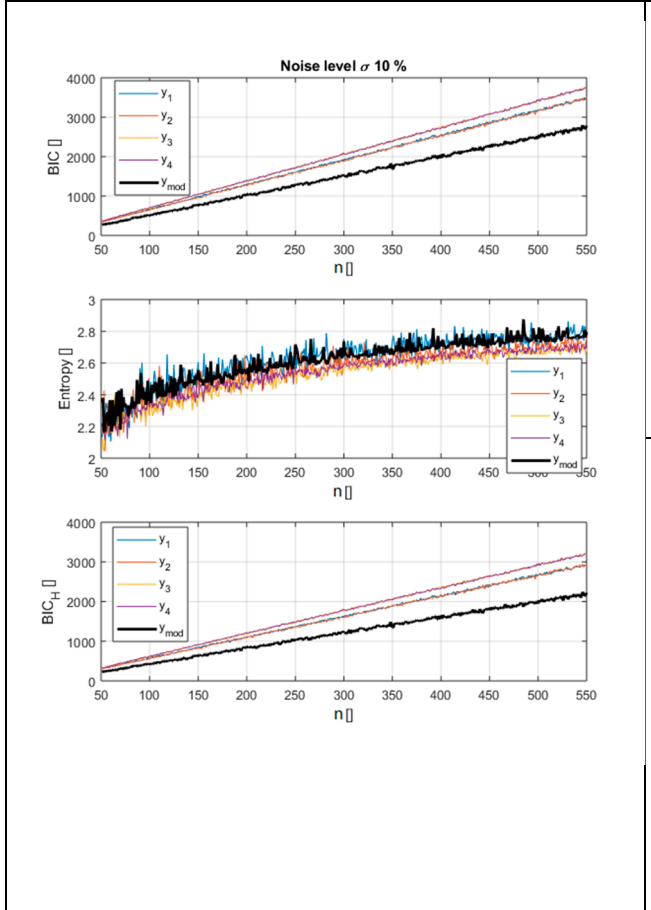
Gaussian Noise 25% - AIC (Figures S31–S33)



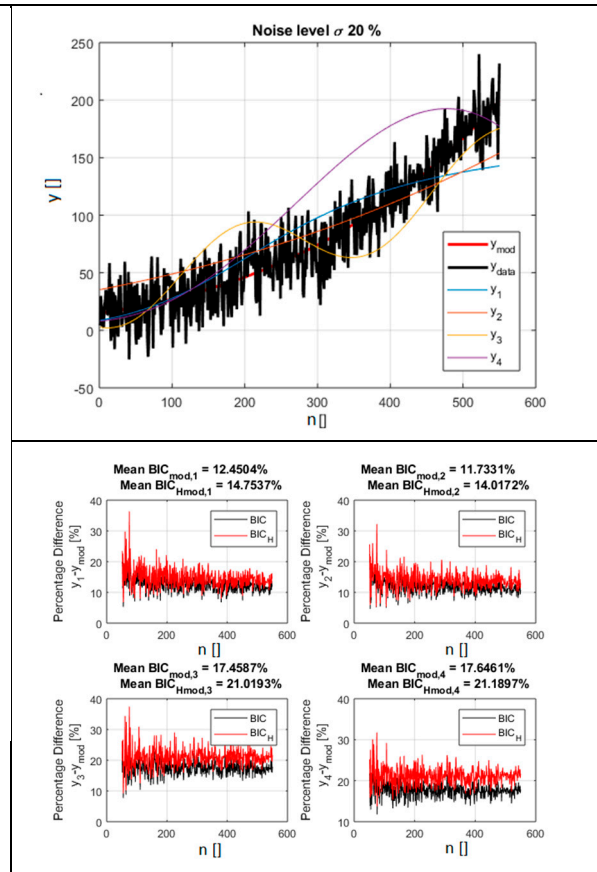
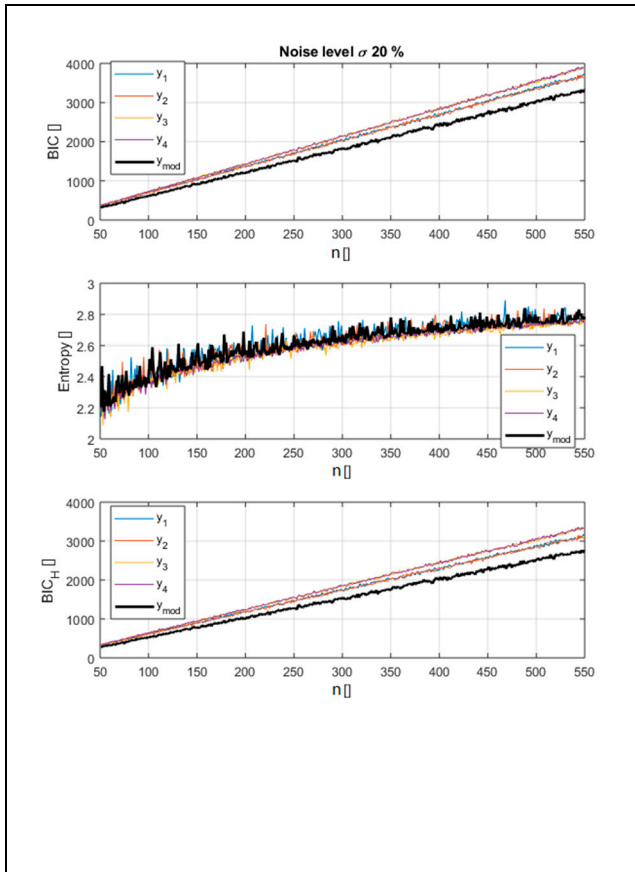
Gaussian Noise 5% - BIC (Figures S34–B36)



Gaussian Noise 10% - BIC (Figures S37–S39)



Gaussian Noise 20% - BIC (Figures S42–S45)



Gaussian Noise 25% - BIC (Figures S46–S48)

