

Supplementary File

Figure S1. 1D and 2D NMR spectra of 11-deoxymogroside V (**1**). (a) ^1H -NMR spectrum of **1**; (b) ^1H - ^1H COSY spectrum of **1**; (c) ^1H - ^1H TOCSY spectrum of **1**; (d) ^1H - ^{13}C HSQC spectrum of **1**; (e) ^1H - ^{13}C HMBC spectrum of **1**.

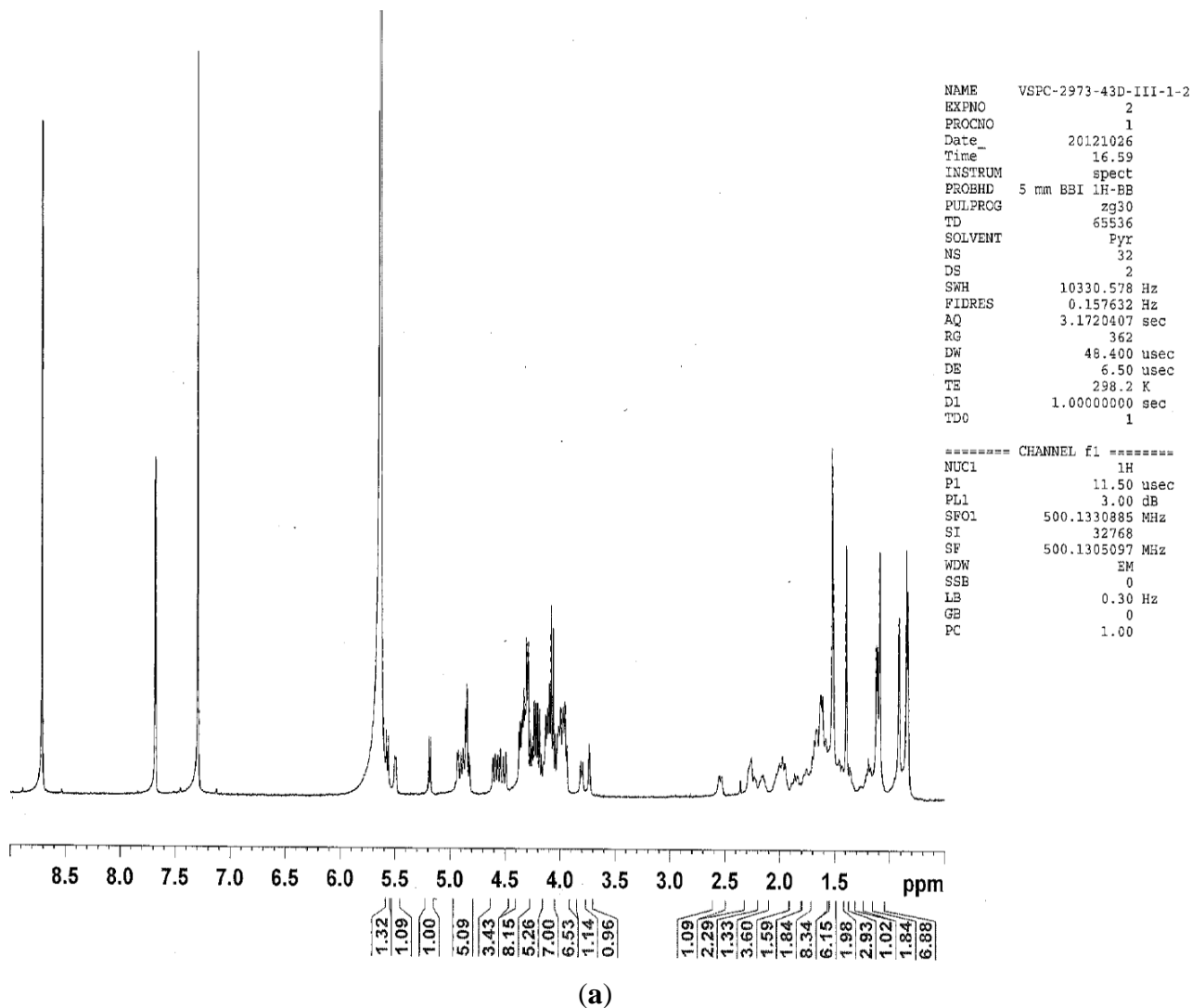


Figure S1. Cont.

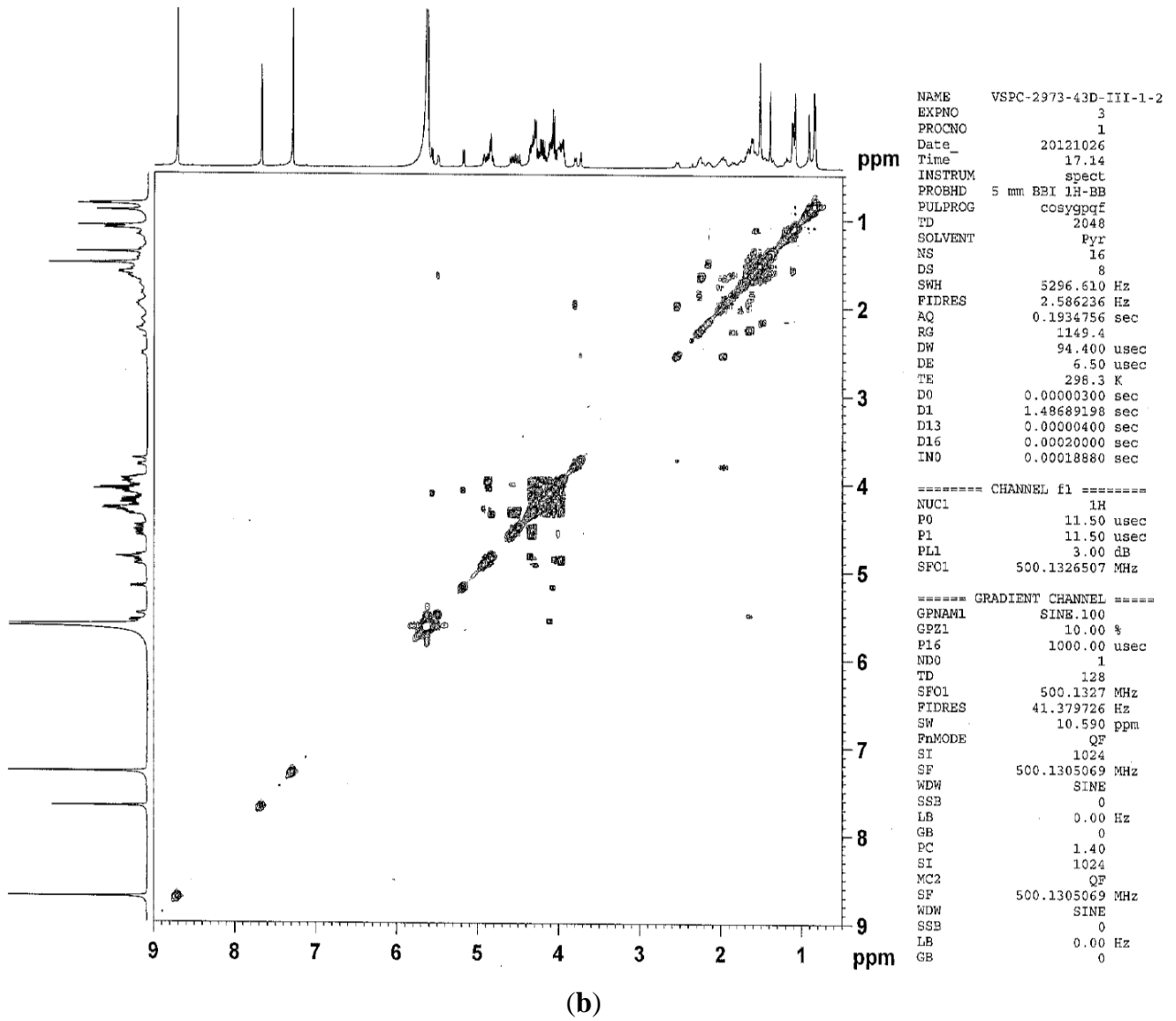
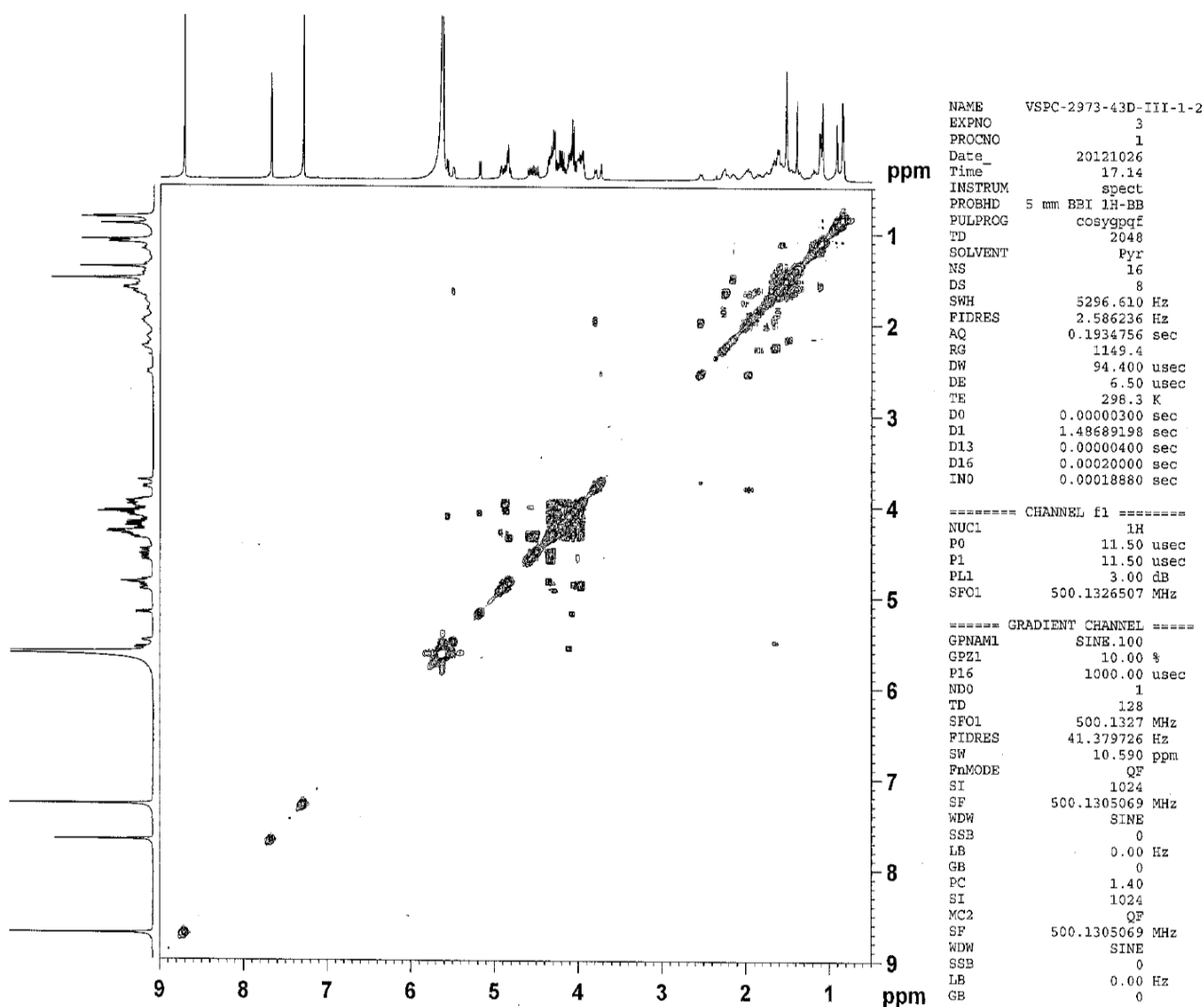
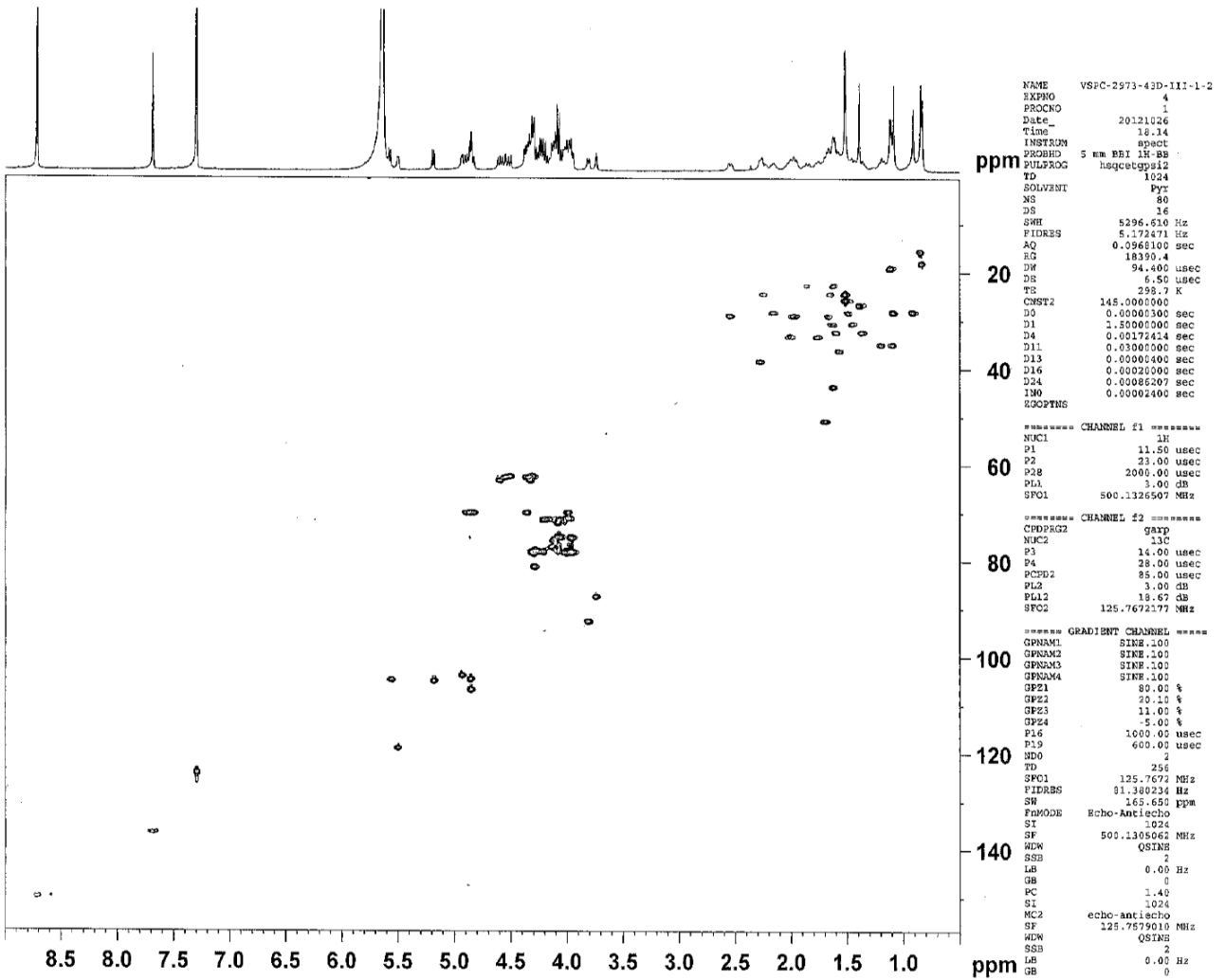


Figure S1. Cont.



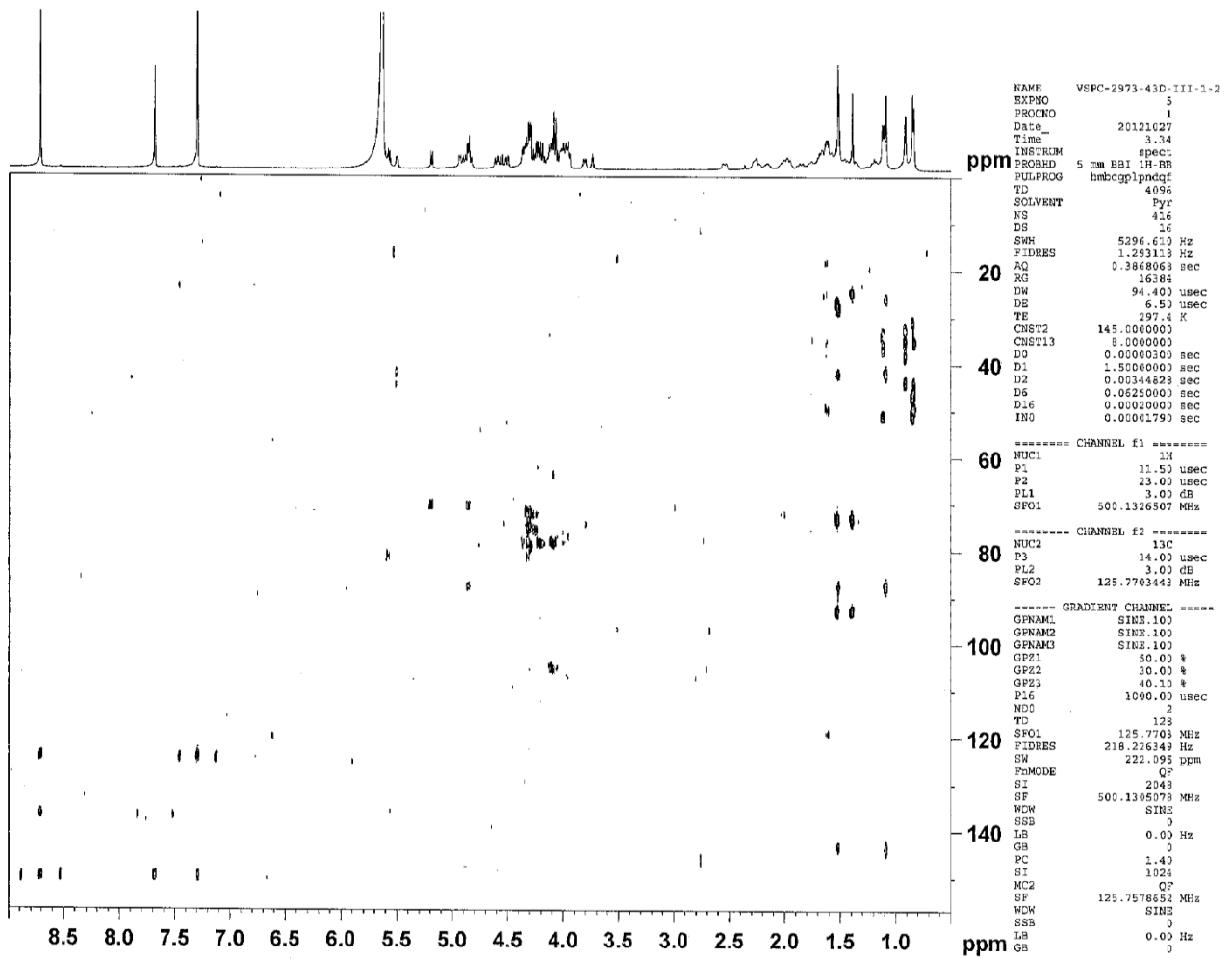
(c)

Figure S1. Cont.



(d)

Figure S1. Cont.



(e)

Figure S2. 1D and 2D NMR spectra of 11-deoxyisomogroside V (**2**). (a) ^1H -NMR spectrum of **2**; (b) ^1H - ^1H COSY spectrum of **2**; (c) ^1H - ^1H TOCSY spectrum of **2**; (d) ^1H - ^{13}C HSQC spectrum of **2**; (e) ^1H - ^{13}C HMBC spectrum of **2**.

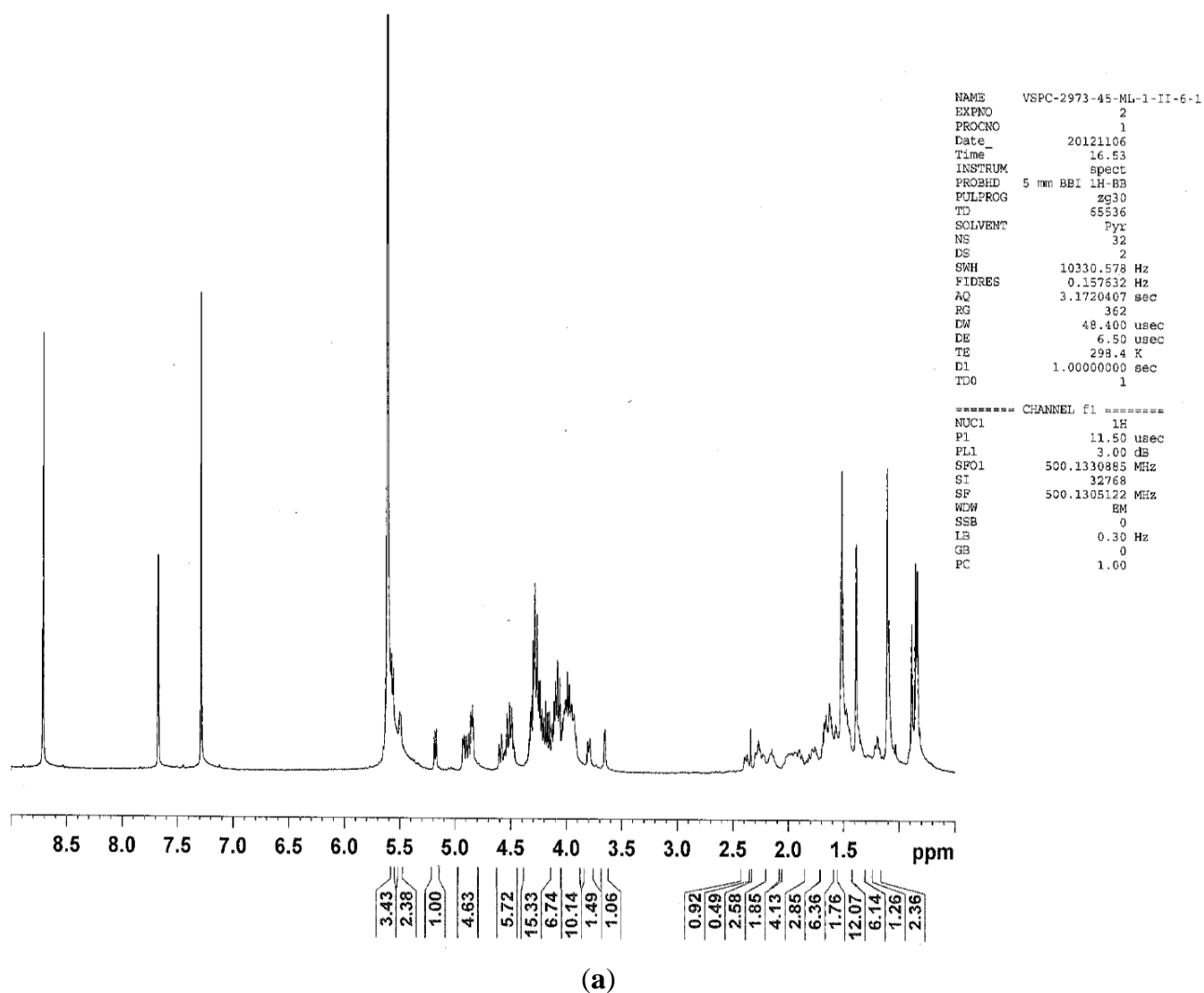
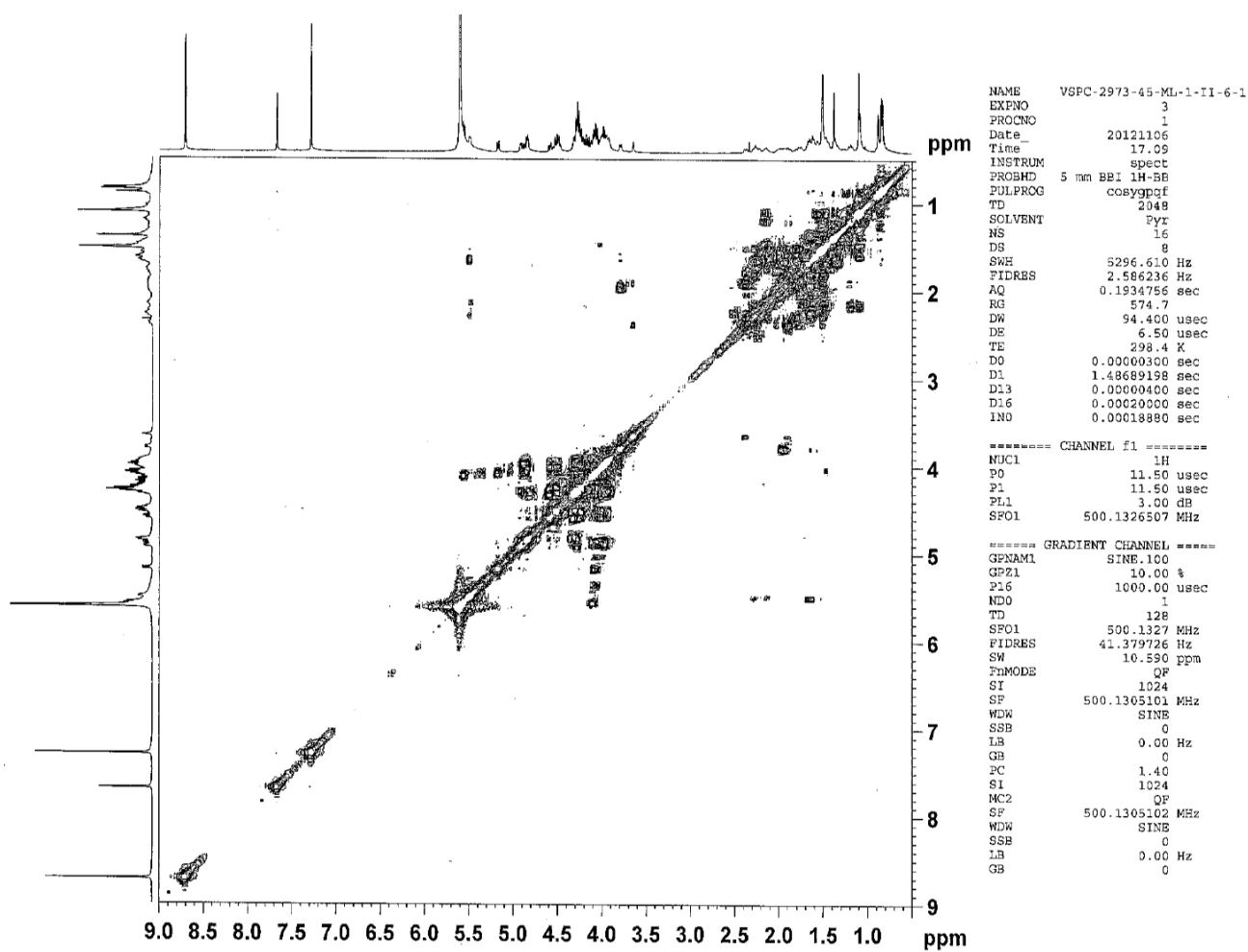
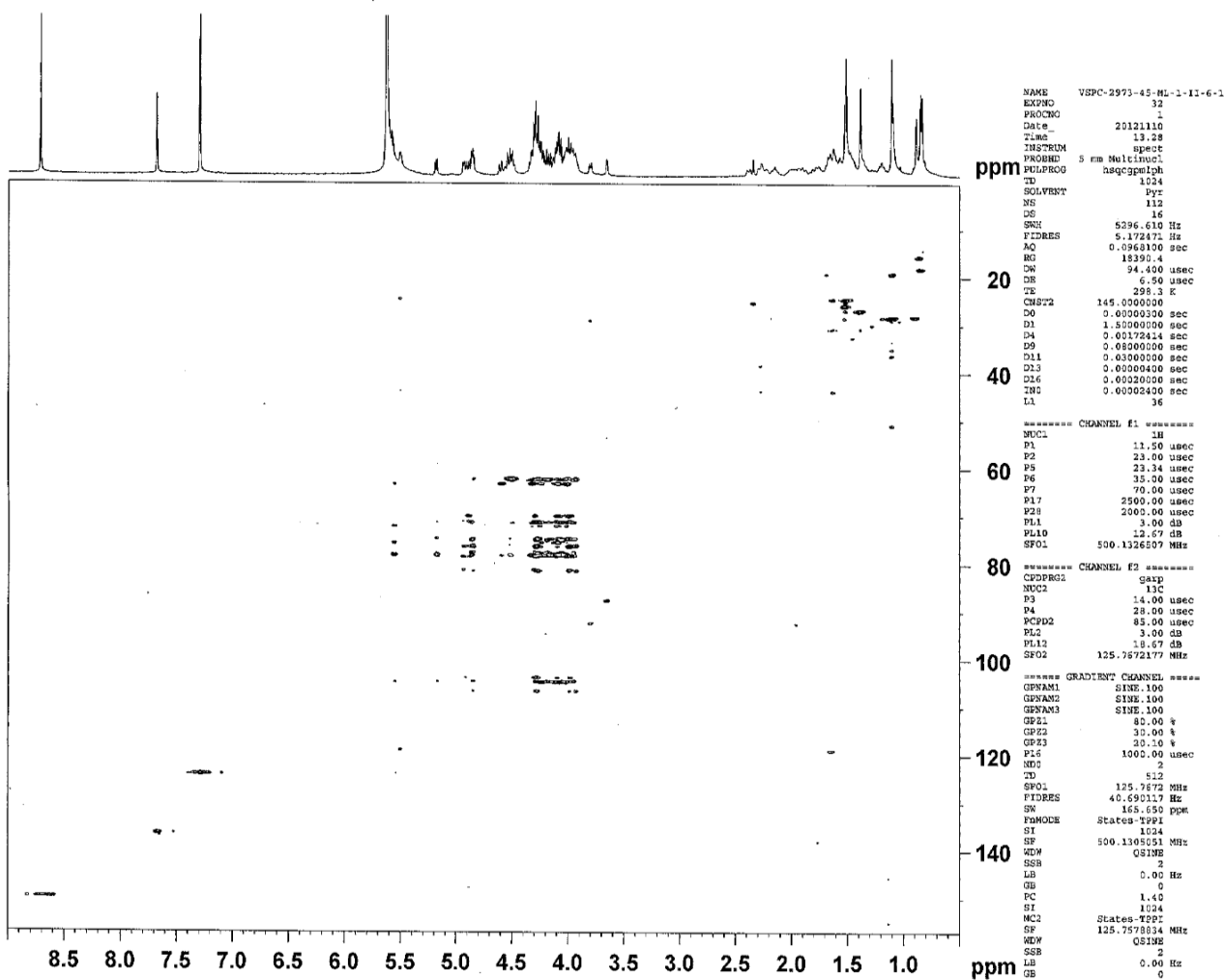


Figure S2. Cont.



(b)

Figure S2. Cont.



(c)

Figure S2. Cont.

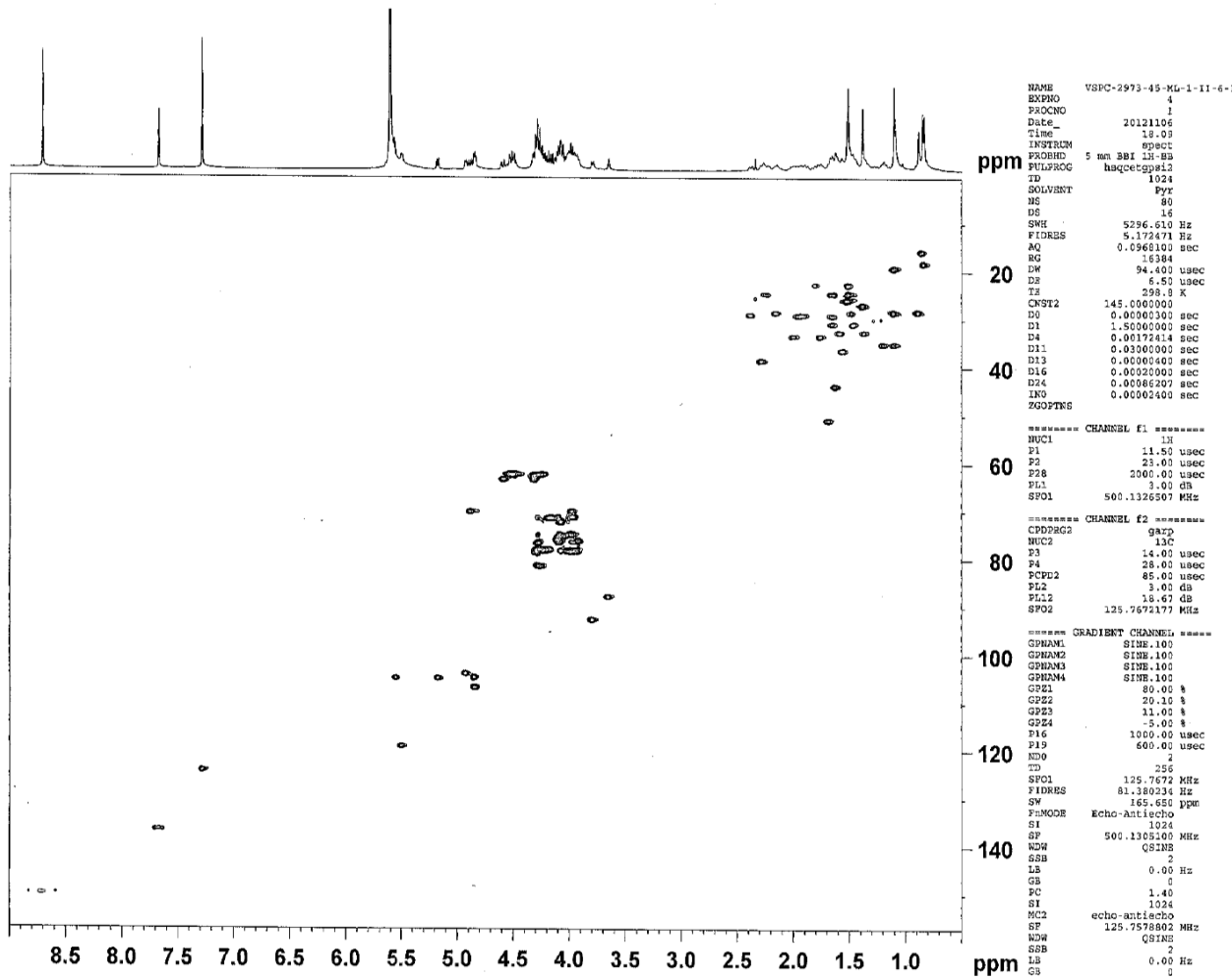
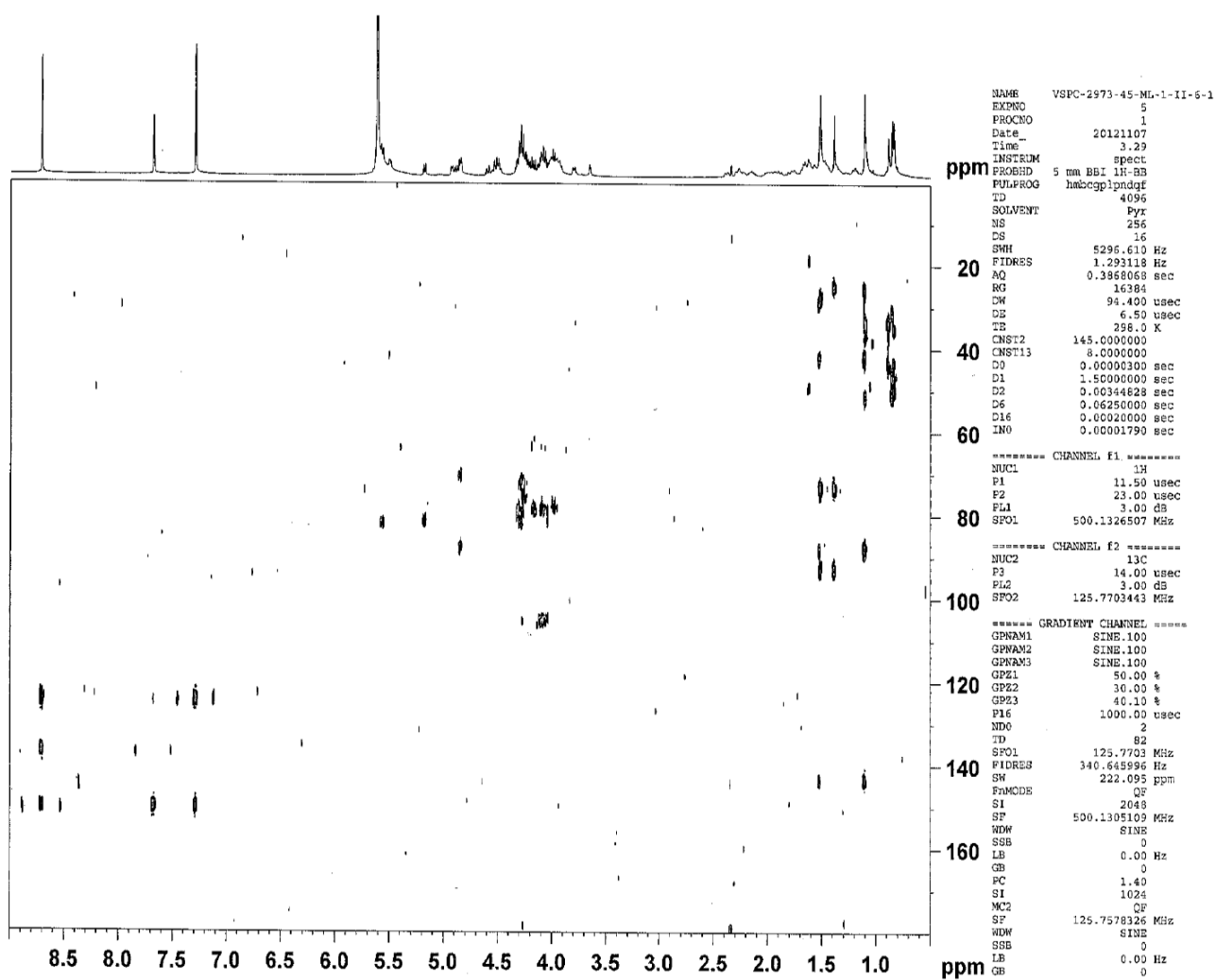
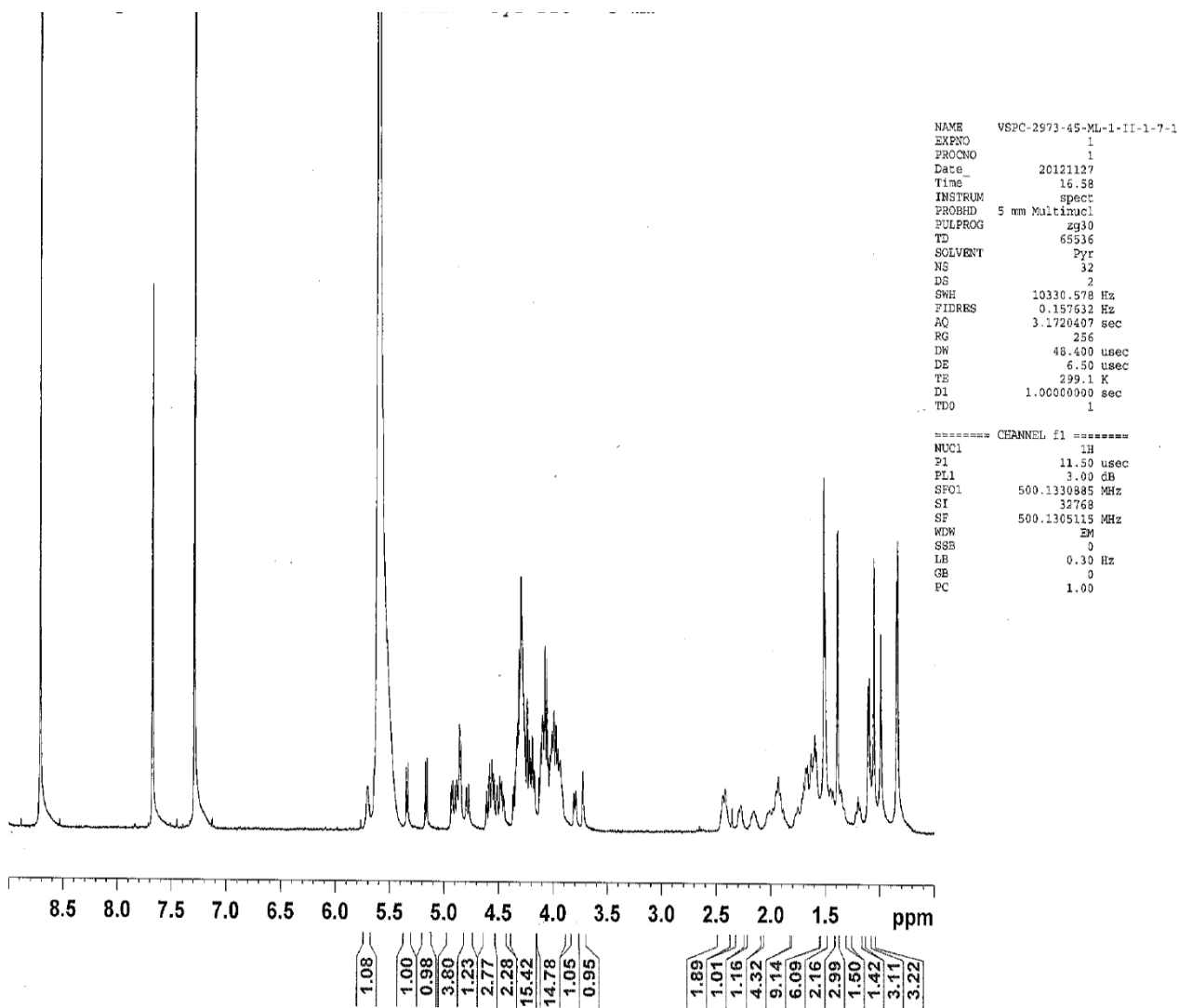


Figure S2. Cont.



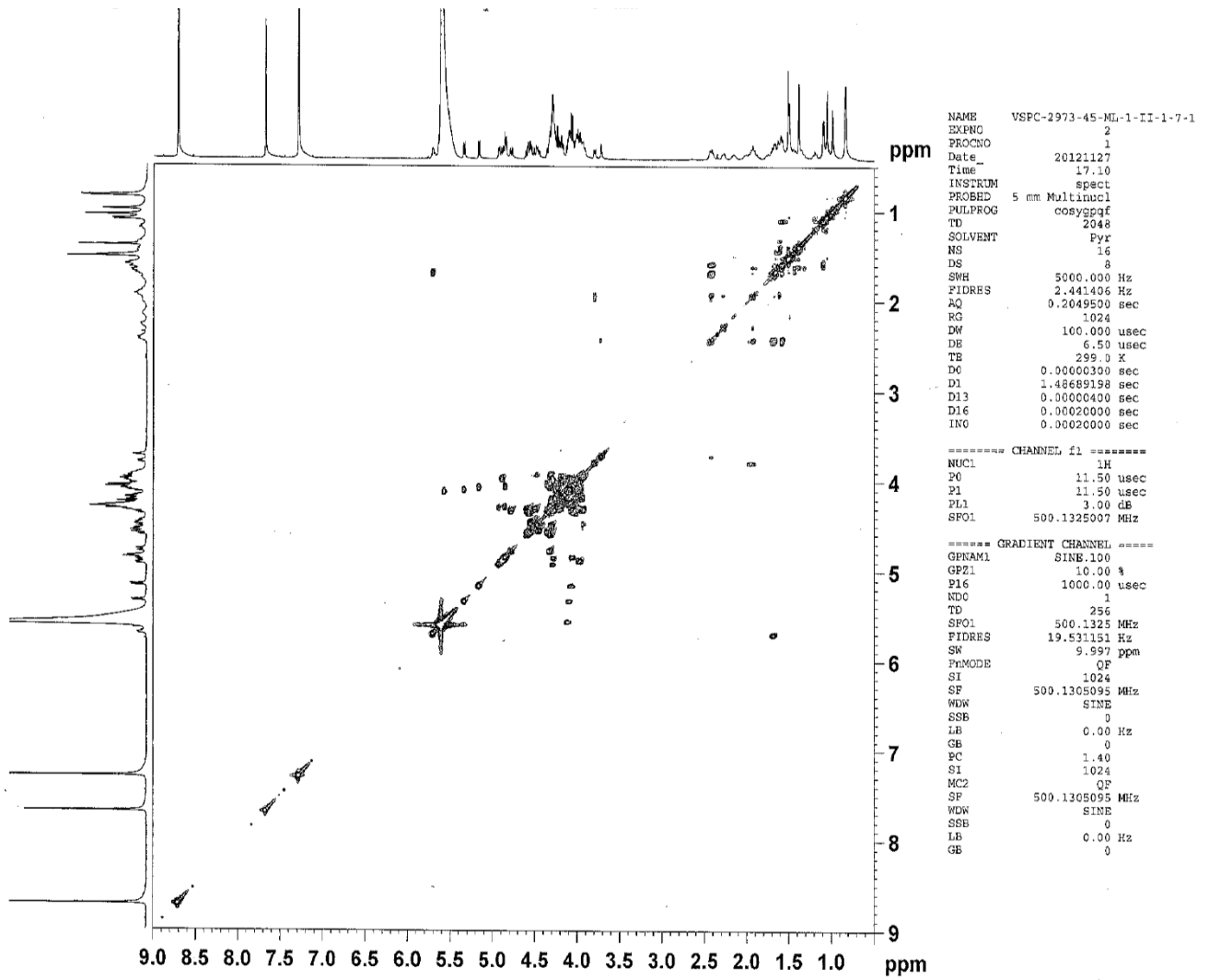
(e)

Figure S3. 1D and 2D NMR spectra of 11-deoxymogroside VI (**3**). (a) ^1H -NMR spectrum of **3**; ^1H -NMR spectrum of **3**; (b) ^1H - ^1H COSY spectrum of **3**; (c) ^1H - ^1H TOCSY spectrum of **3**; (d) ^1H - ^{13}C HSQC spectrum of **3**. (e) ^1H - ^{13}C HMBC spectrum of **3**.



(a)

Figure S3. Cont.



(b)

Figure S3. Cont.

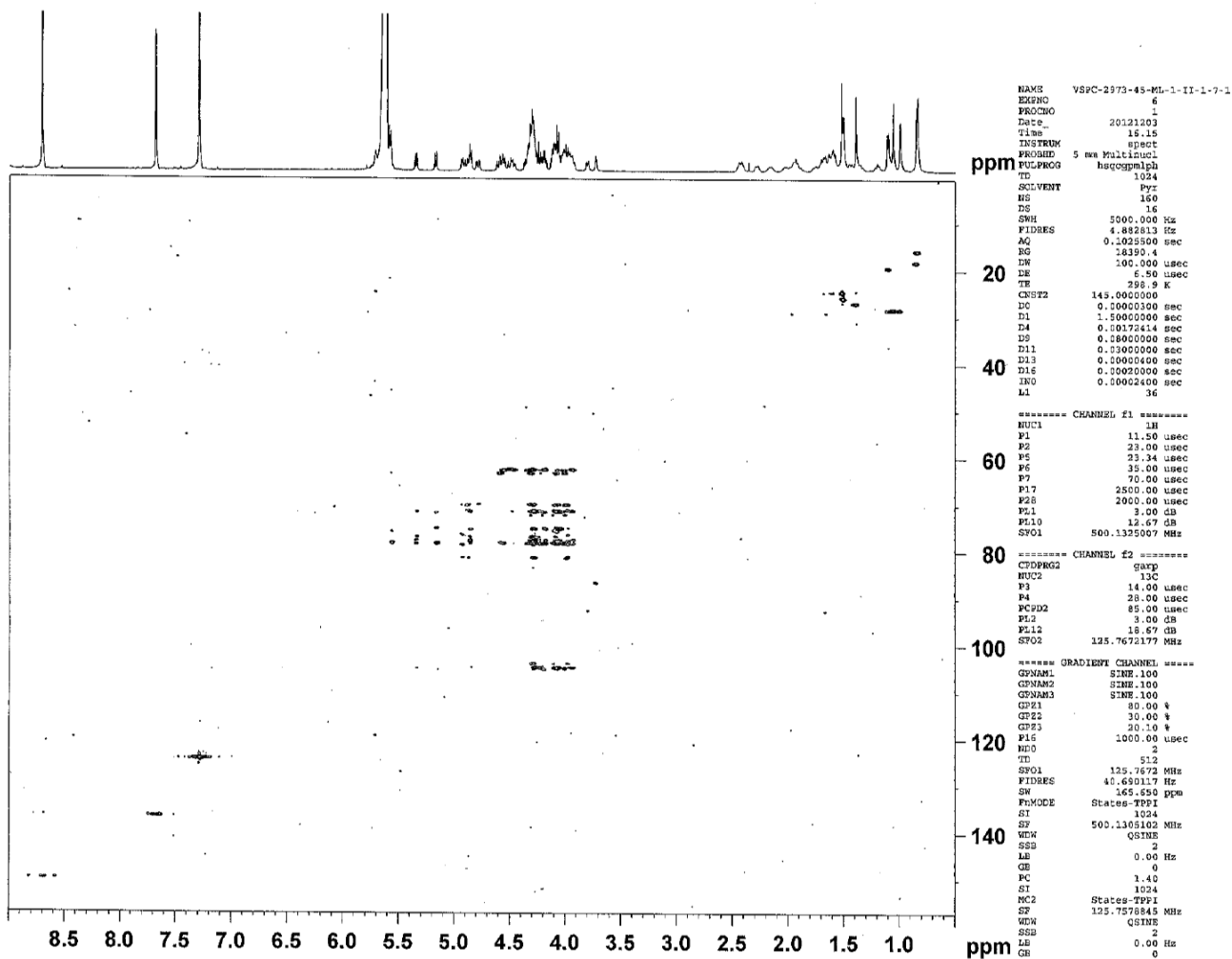
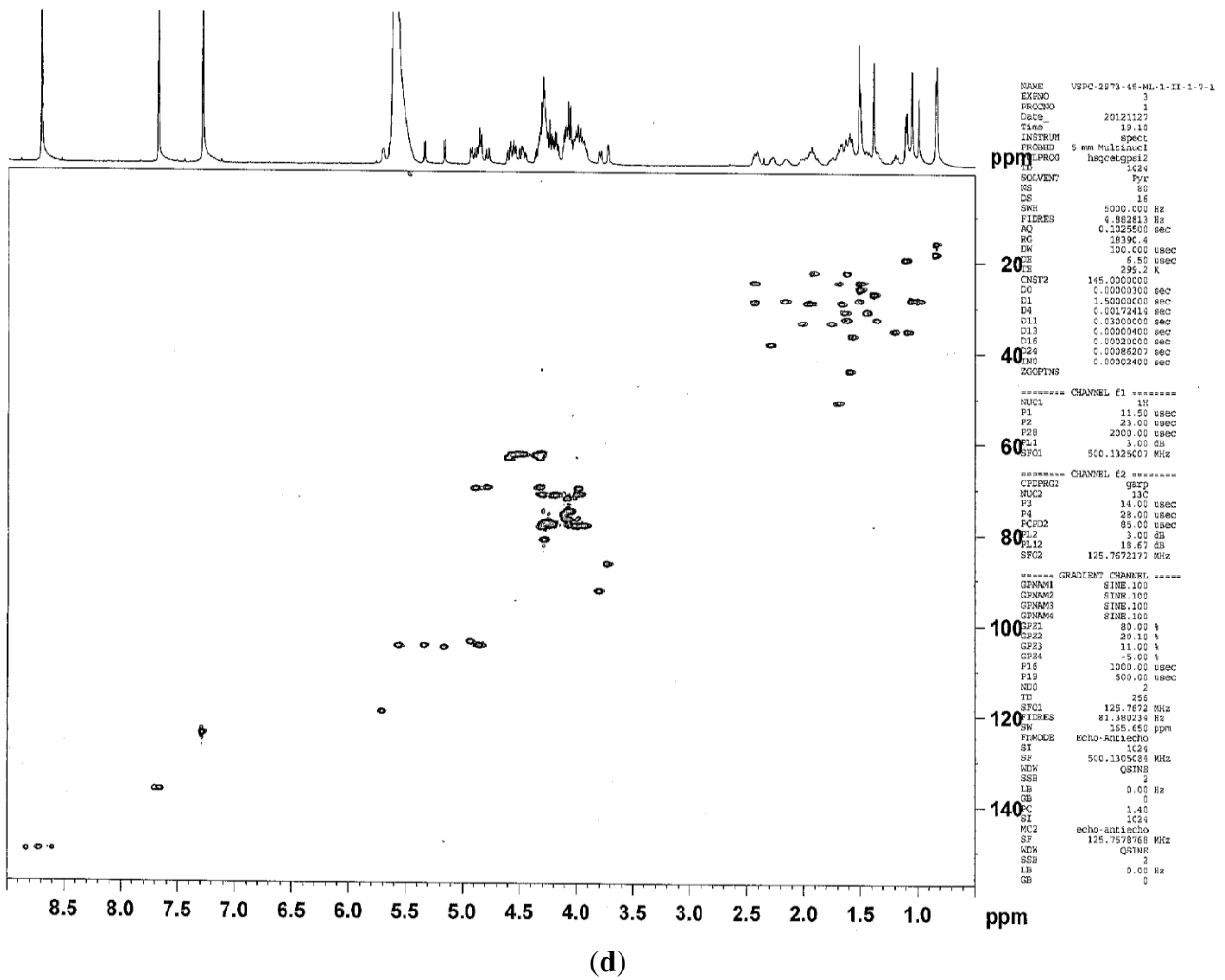


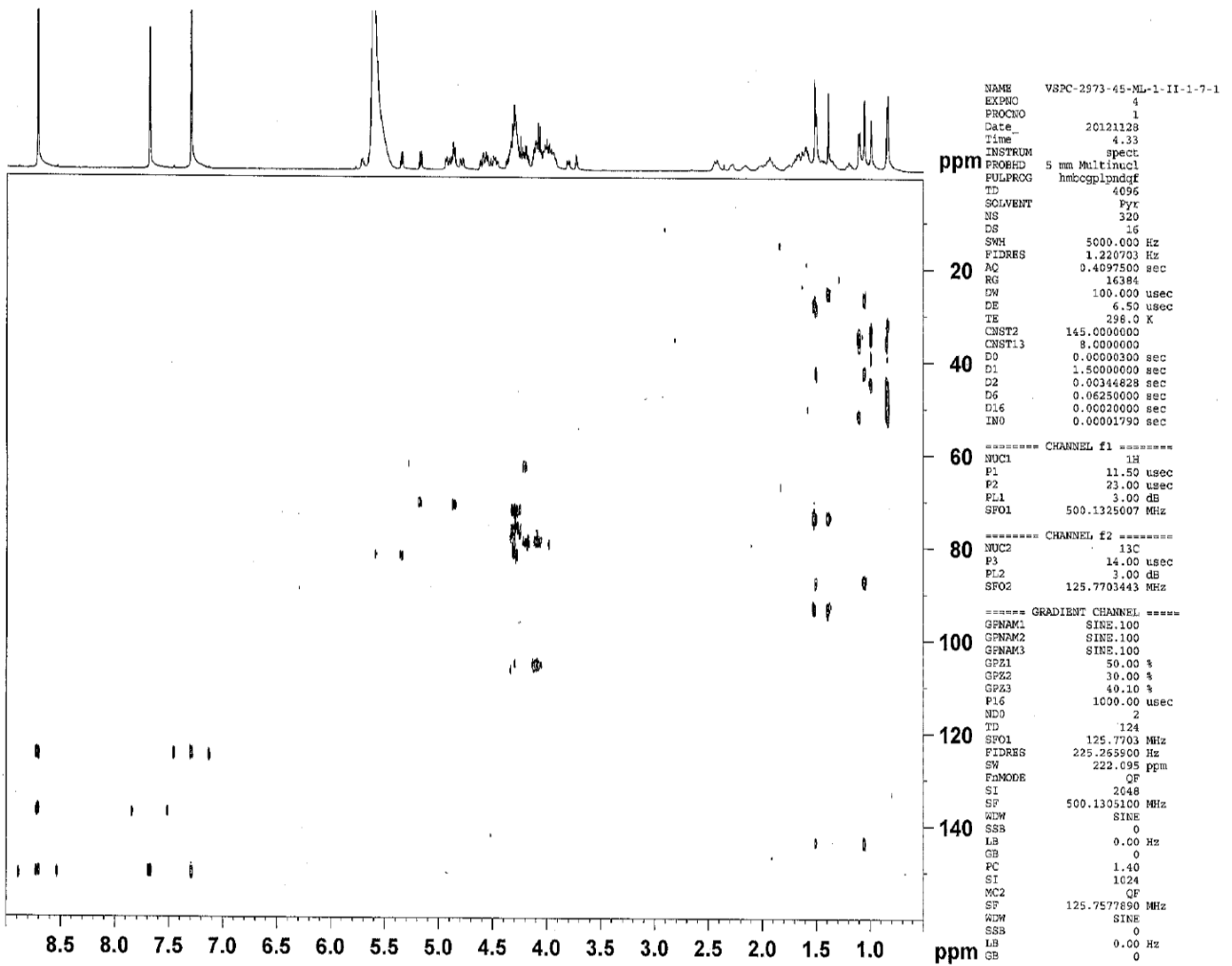
Figure S3. Cont.



```

NAME      VSPC 2973-45-ML-1-II-1-7-1
EXPNO    3
PROCNO   1
Date_    20121127
Time     19.10
INSTRUM  spect
PROBHD   5 mm Multikn1
PULPROG  hsqcztgps12
TD       1024
SOLVENT  Pyc
NS       60
DS       16
SWH      5000.000 Hz
FIDRES   4.882813 Hz
AQ       0.1023500 sec
RG       26390.4
EM       100.000 usec
TE       299.2 K
----- CHANNEL f1 -----
NUC1     1H
P1       11.50 usec
P2       23.00 usec
P28      2000.00 usec
PC1      3.00 GB
SFO1     500.1325007 MHz
----- CHANNEL f2 -----
CPDPRG2  gmp2
NUC2     13C
P3       14.00 usec
P4       28.00 usec
PCPD2    85.00 usec
PC2      3.00 GB
PL12     18.67 GB
SFO2     125.7672177 MHz
----- GRADIENT CHANNEL -----
GENAM1   SINE.100
GENAM2   SINE.100
GENAM3   SINE.100
GENAM4   SINE.100
GP21     30.00 %
GP22     20.10 %
GP23     11.00 %
GP24     -5.00 %
F16      1000.00 usec
F19      600.00 usec
NU0      2
TD        256
SFO1     125.7672 MHz
FIDRES   81.380234 Hz
SW       165.650 ppm
PRMOBCE Echo-Antiacho
SI       1024
SF       500.1325004 MHz
WDW      QSTNS
SSB      2
LB       0.00 Hz
GB       0
PC       1.40
SI       1024
MC2      echo-antiacho
SF       125.7578768 MHz
WDW      QSTNS
SSB      2
LB       0.00 Hz
GB       0
    
```

Figure S3. Cont.



(e)