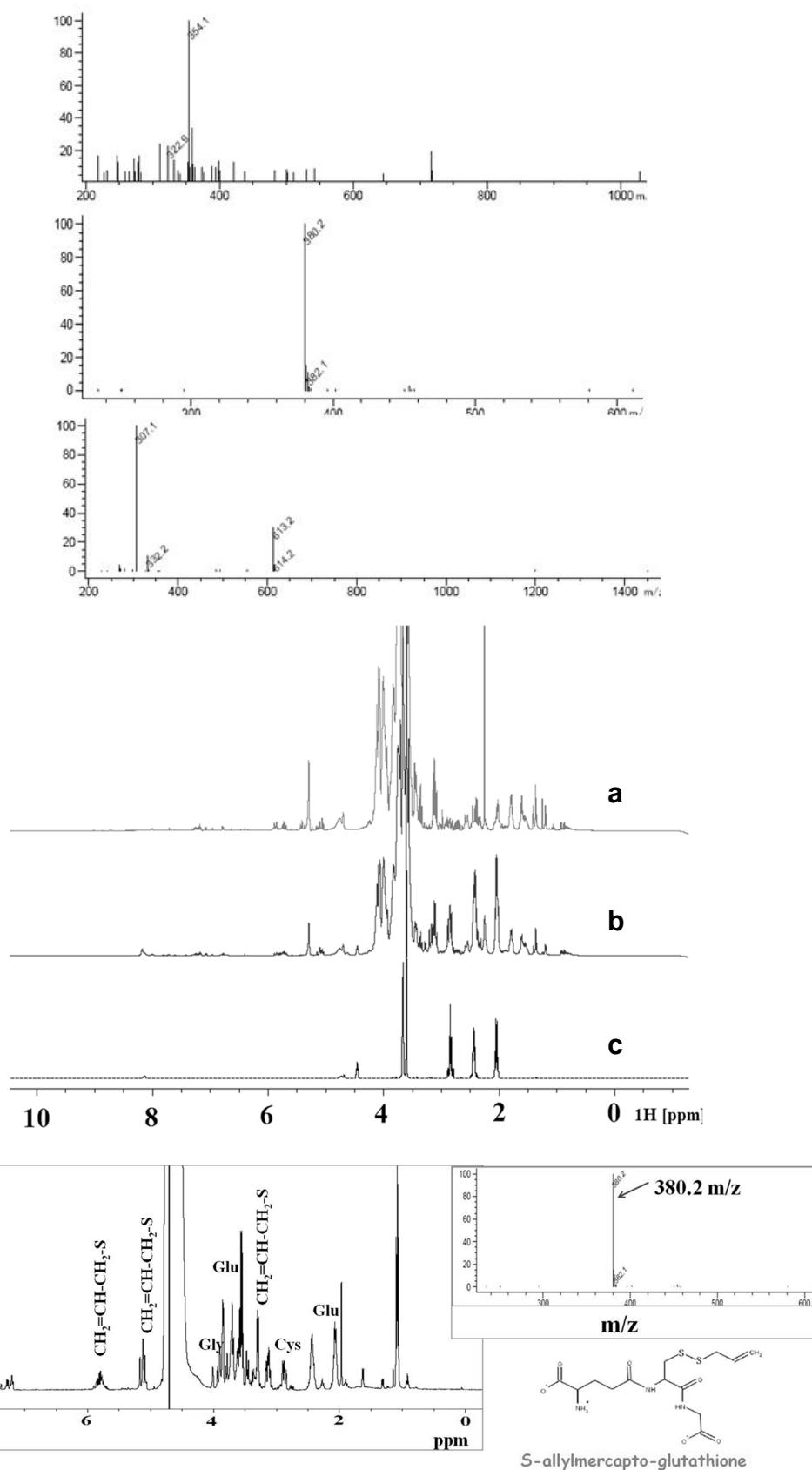
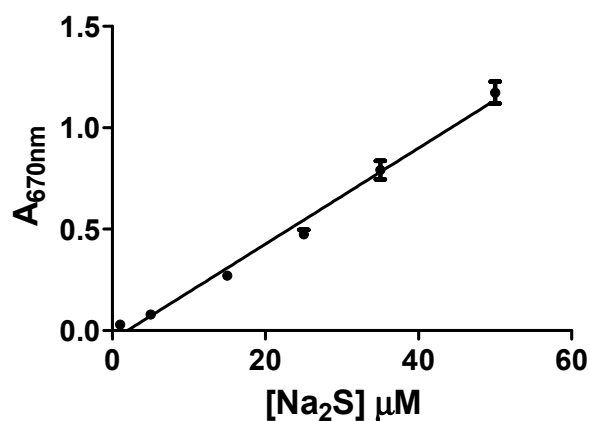


# Supplementary Materials

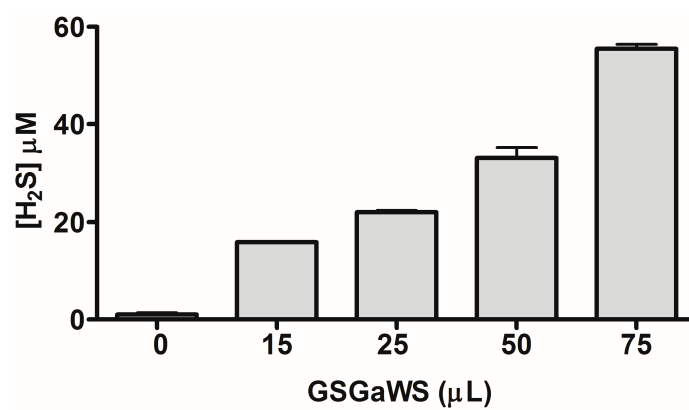
## LC-Mass GSGaWS



**Figure S1.** 1D  $^1\text{H-NMR}$  spectra in 30%  $\text{D}_2\text{O}$  and LS-MS analysis of the peaks obtained by RP-HPLC of the cold GaWS or GSGaWS fractions.



**Figure S2.** Calibration curve of H<sub>2</sub>S formation by the methylene blue assay, obtained at different concentrations of Na<sub>2</sub>S. Absorbance: 670 nm. Each bar represents  $\pm$ SD of three experiments.



**Figure S3.** H<sub>2</sub>S-release at different concentrations of GSGaWS extract in the presence of 0.12 μM TST.