

Supplementary Material

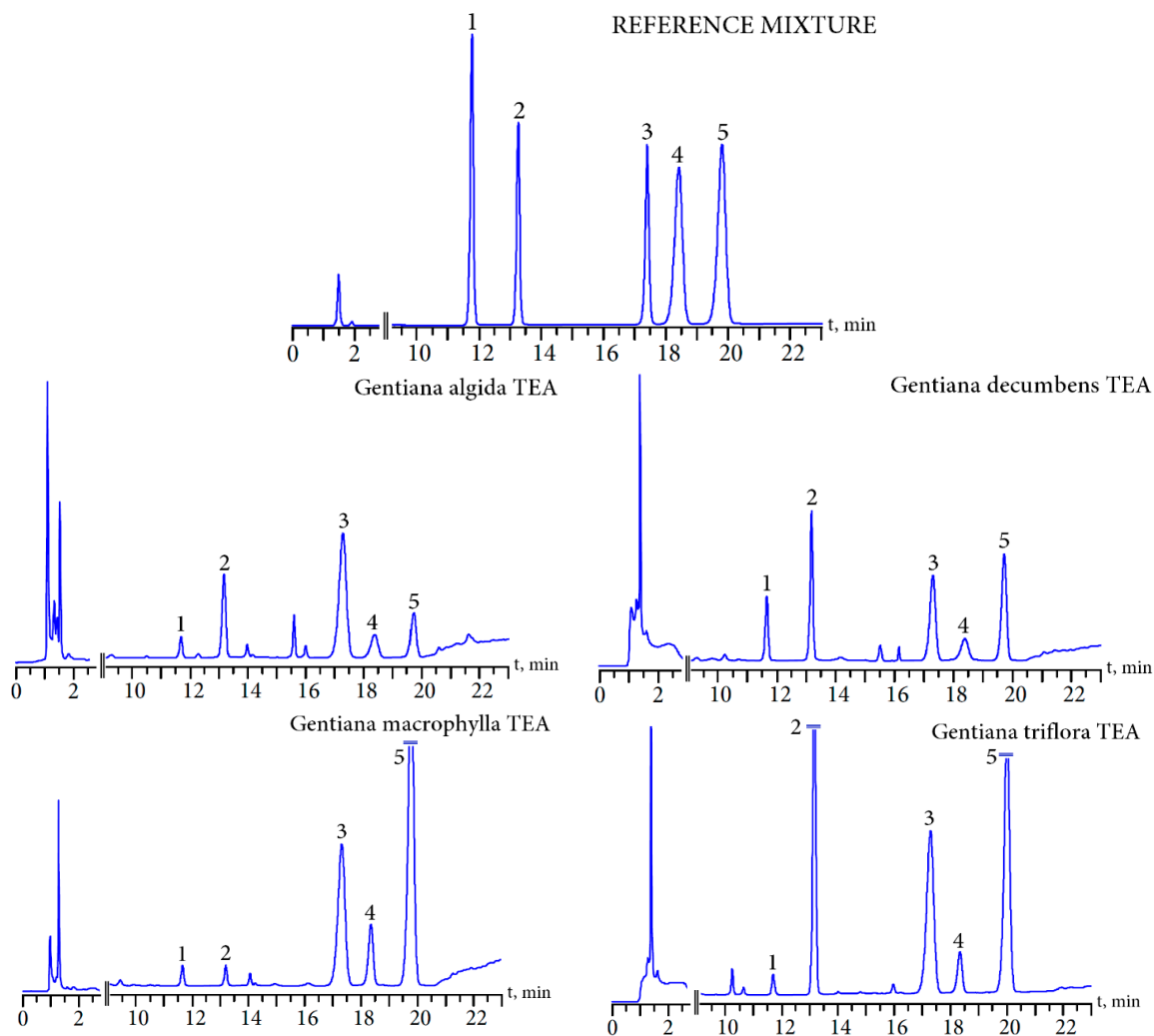


Figure S1. HPLC chromatograms of the reference mixture of carbohydrates and *Gentiana algida* tea decoction. Compounds: 1—fructose; 2—glucose; 3—sucrose; 4—gentiobiose; 5—gentianose.

HPLC conditions. Apparatus—HPLC Milichrom A-02 microcolumn system; column—Separon 5-NH₂ (1 × 60 mm, Φ 1 μm; Tessek Ltd.; Prague, Czechia); column temperature—20 °C; mobile phase—acetonitrile–water 75:25; injection volume—1 μL; elution rate—100 μL/min; detector wavelength—190 nm. Concentrations of the compounds in the reference mixture: fructose—20 μg/mL; glucose—15 μg/mL; sucrose—20 μg/mL; gentiobiose—25 μg/mL; gentianose—25 μg/mL.