

Supplemental Materials

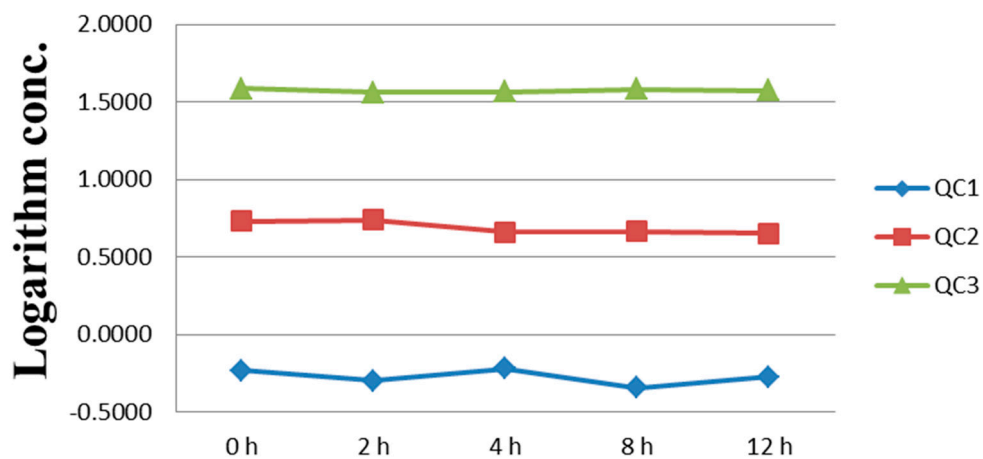


Figure S1. The stability of plasma sample under 4 °C. QC1, QC2 and QC3 means the QC samples with concentration of sinomenine were 0.2347, 1.878, and 15.02 ng/mL, respectively.

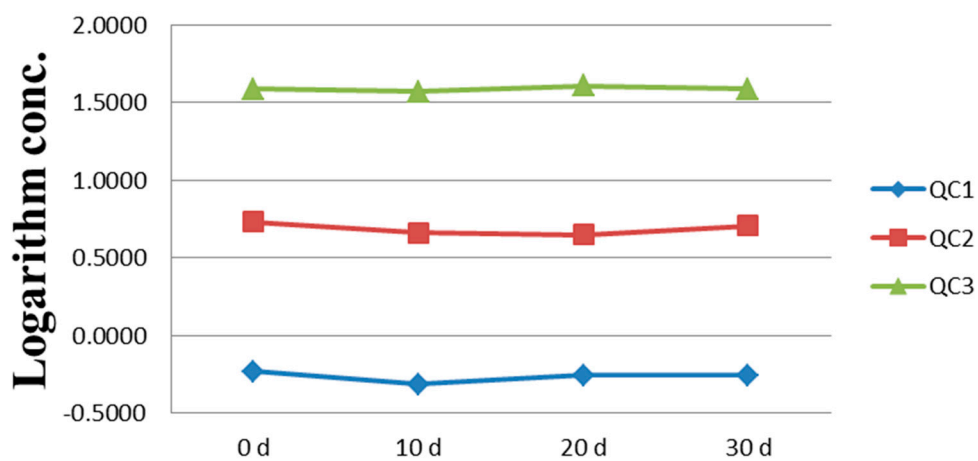


Figure S2. The stability of plasma sample under -80 °C.

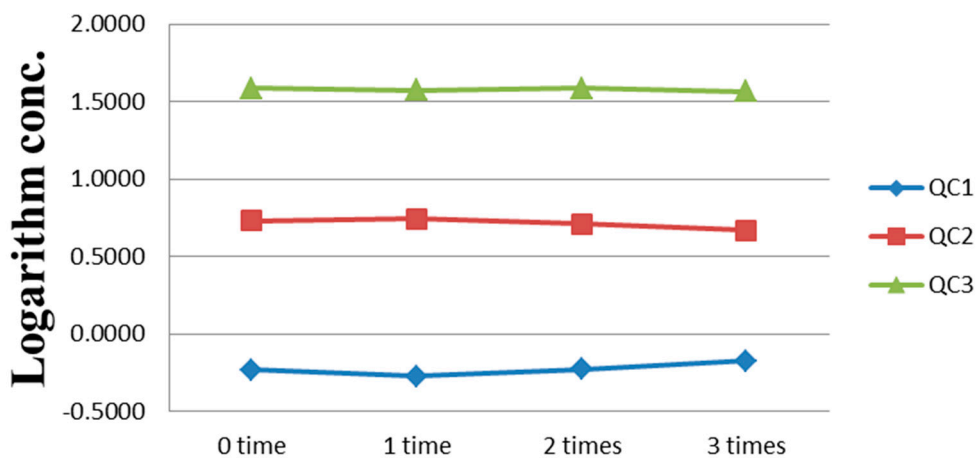


Figure S3. The stability of plasma sample in freeze-thaw three times.

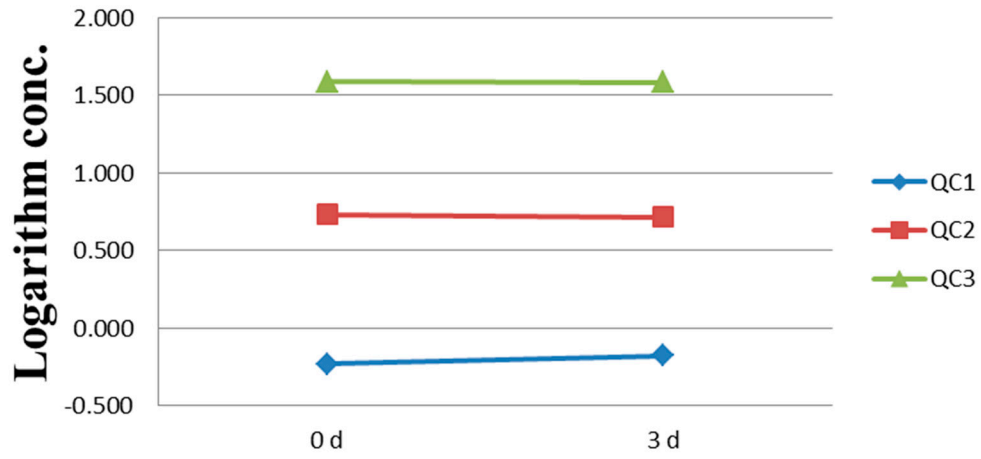


Figure S4. The stability of test sample under 4 °C.

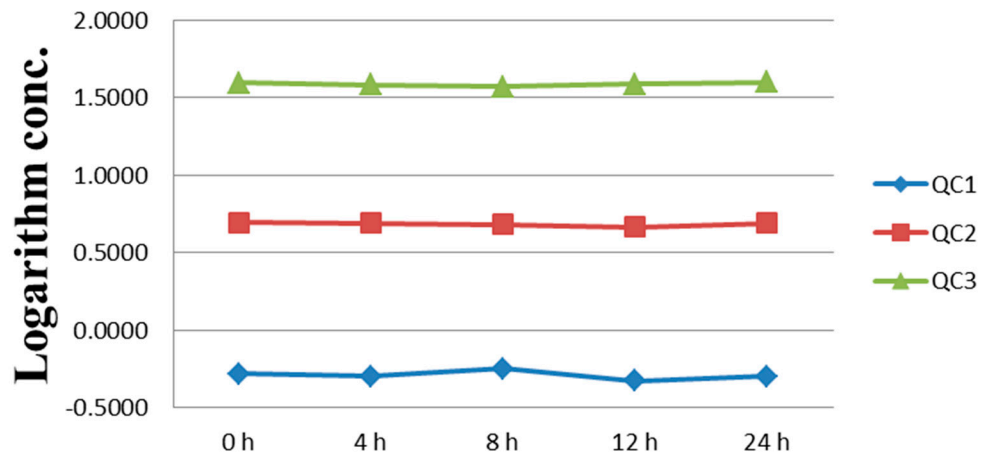


Figure S5. The stability of test sample under 10 °C.