

Supplementary Materials

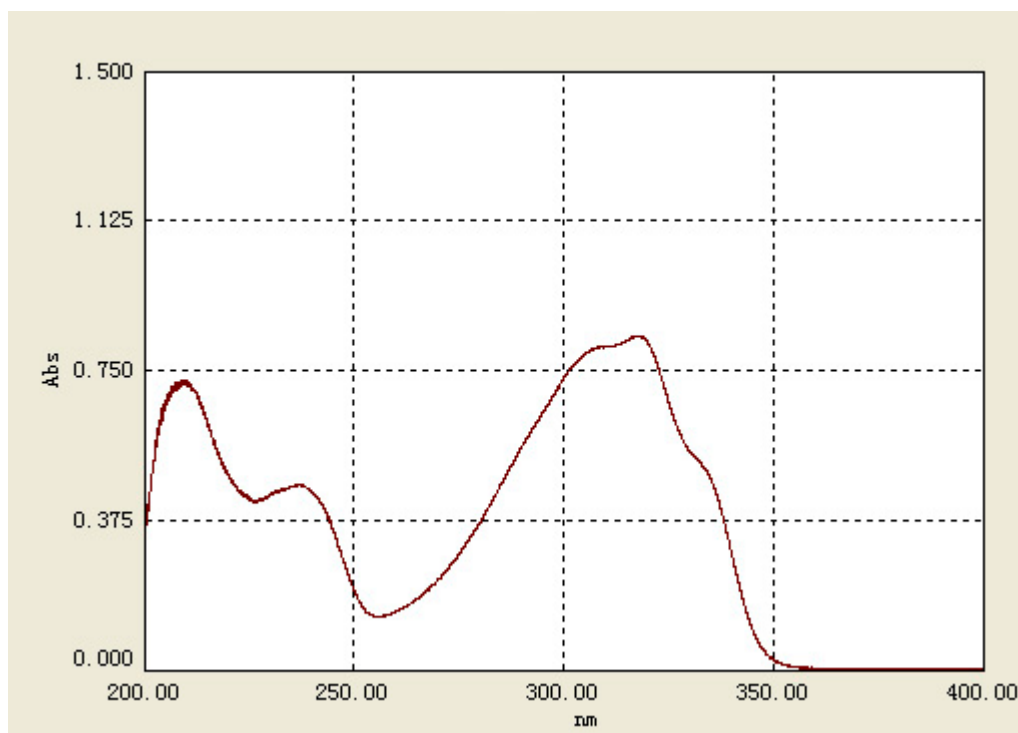


Figure 1. UV spectrum of 1.

Concentration: 0.0100 mg·mL⁻¹ (methanol).

λ (nm)	Abs
209.2	0.727
236.8	0.467
317.4	0.840

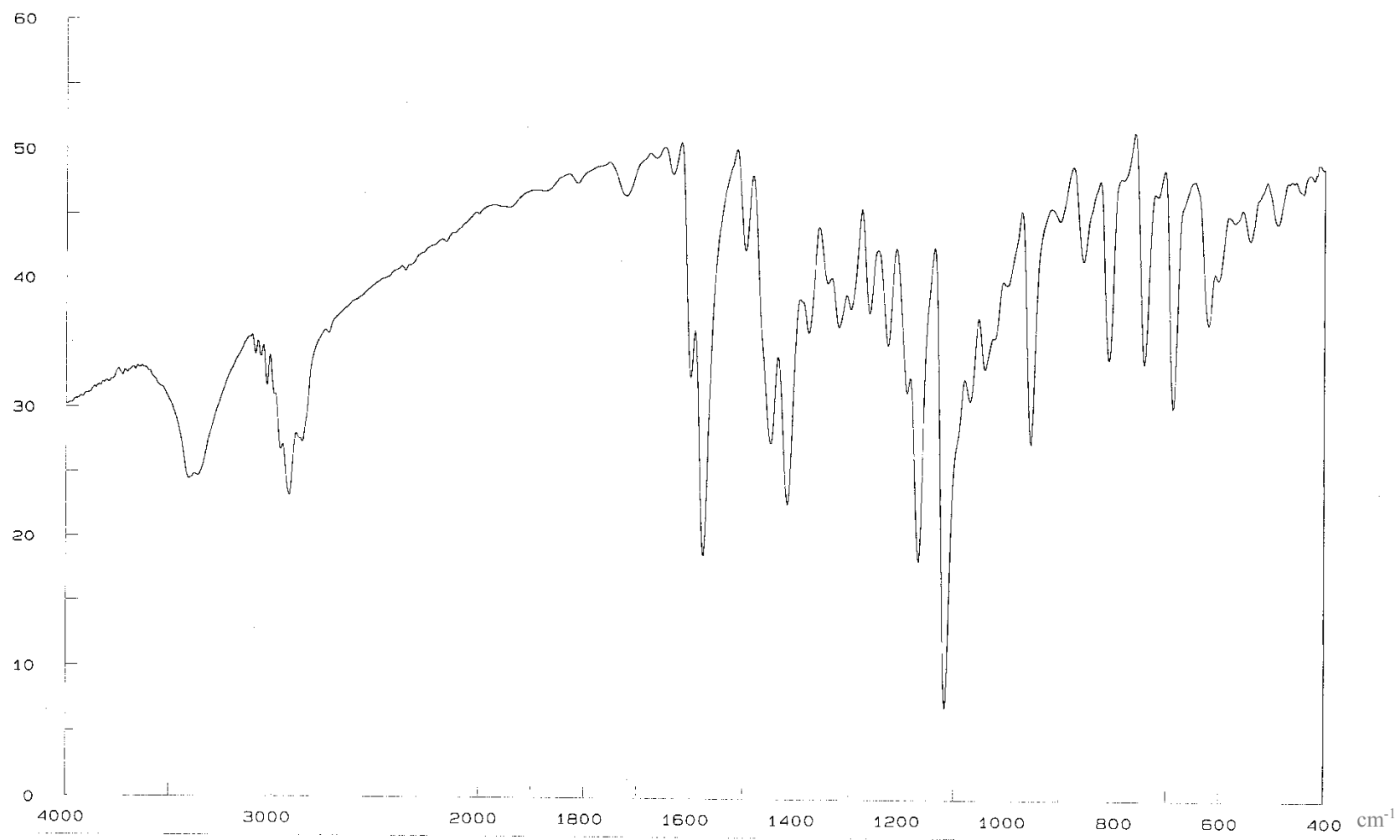


Figure S2. IR spectrum of 1.

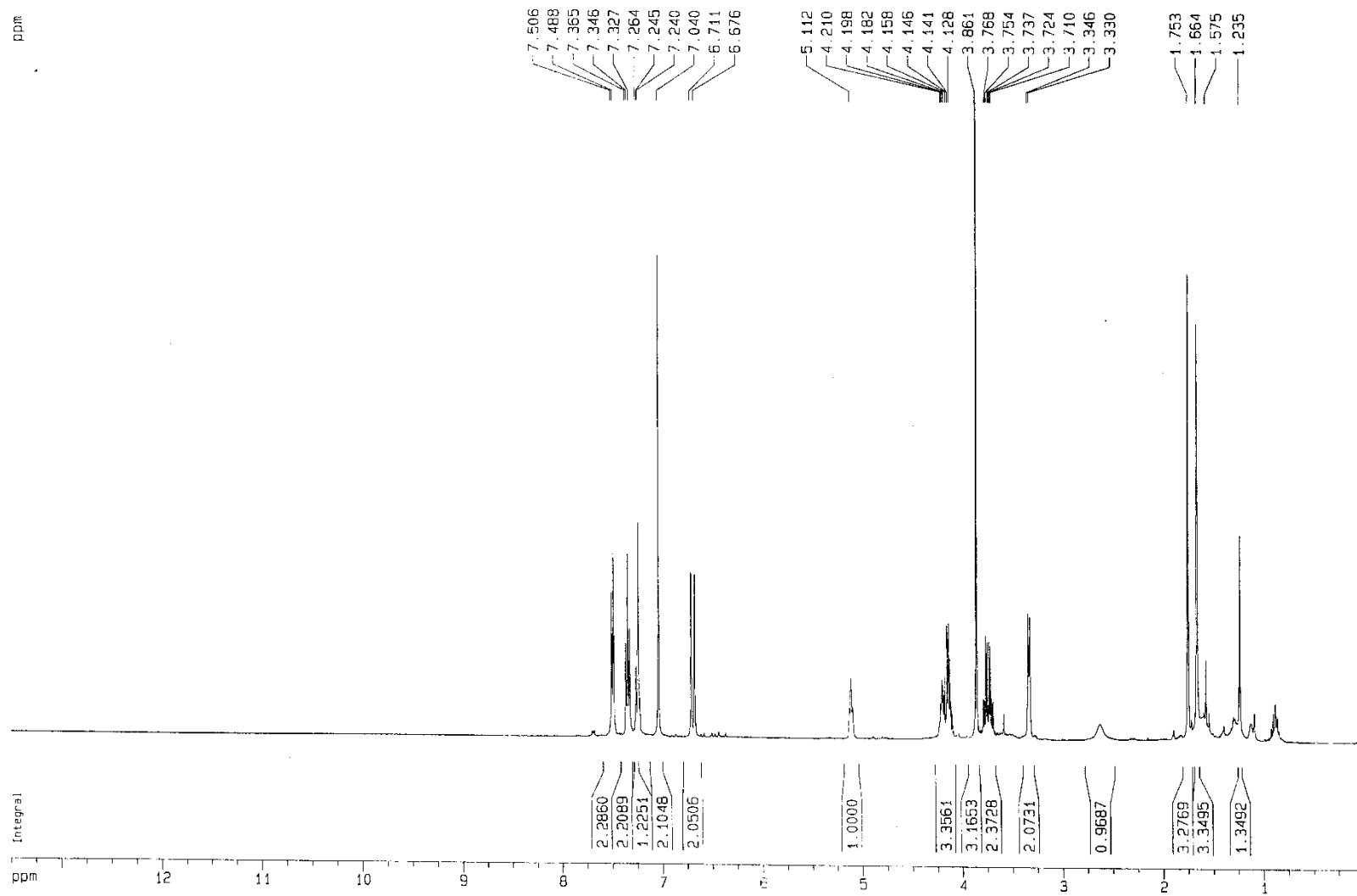


Figure S3. $^1\text{H-NMR}$ spectrum of 1 (400 MHz, in CDCl_3).

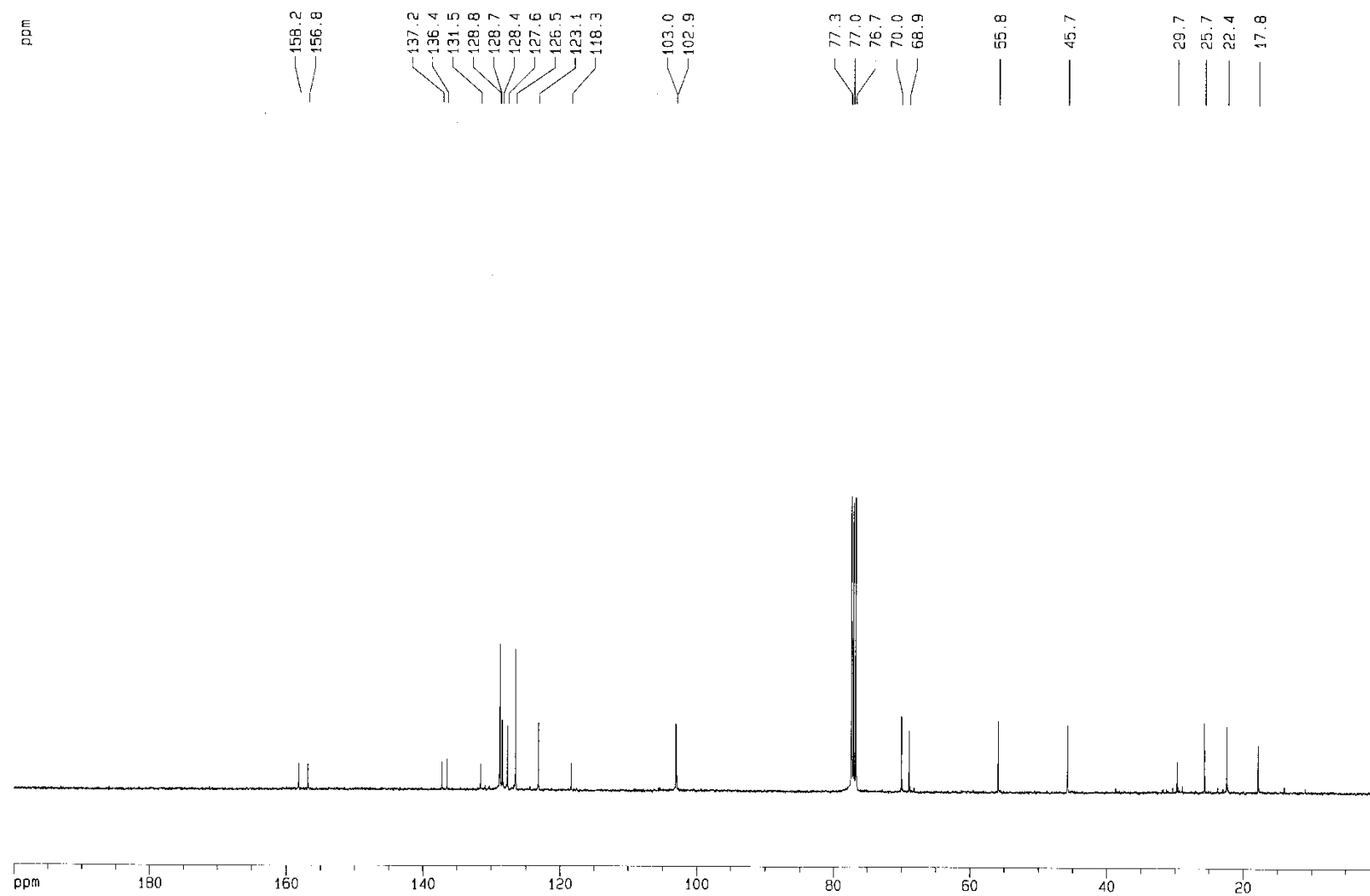


Figure S4. ^{13}C -NMR spectrum of 1 (100 MHz, in CDCl_3).

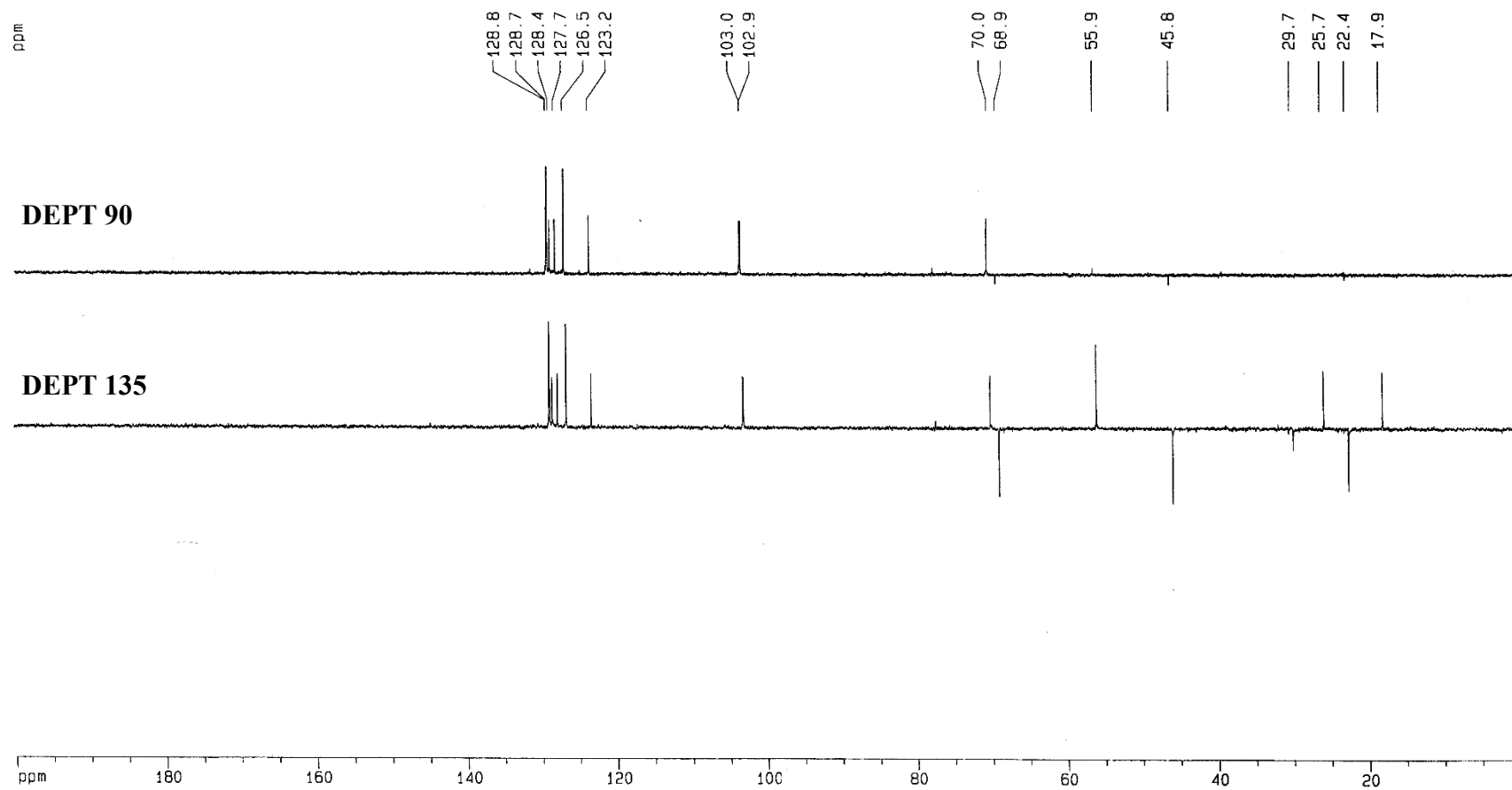


Figure S5. DEPT spectrum of 1 (100 MHz, in CDCl₃).

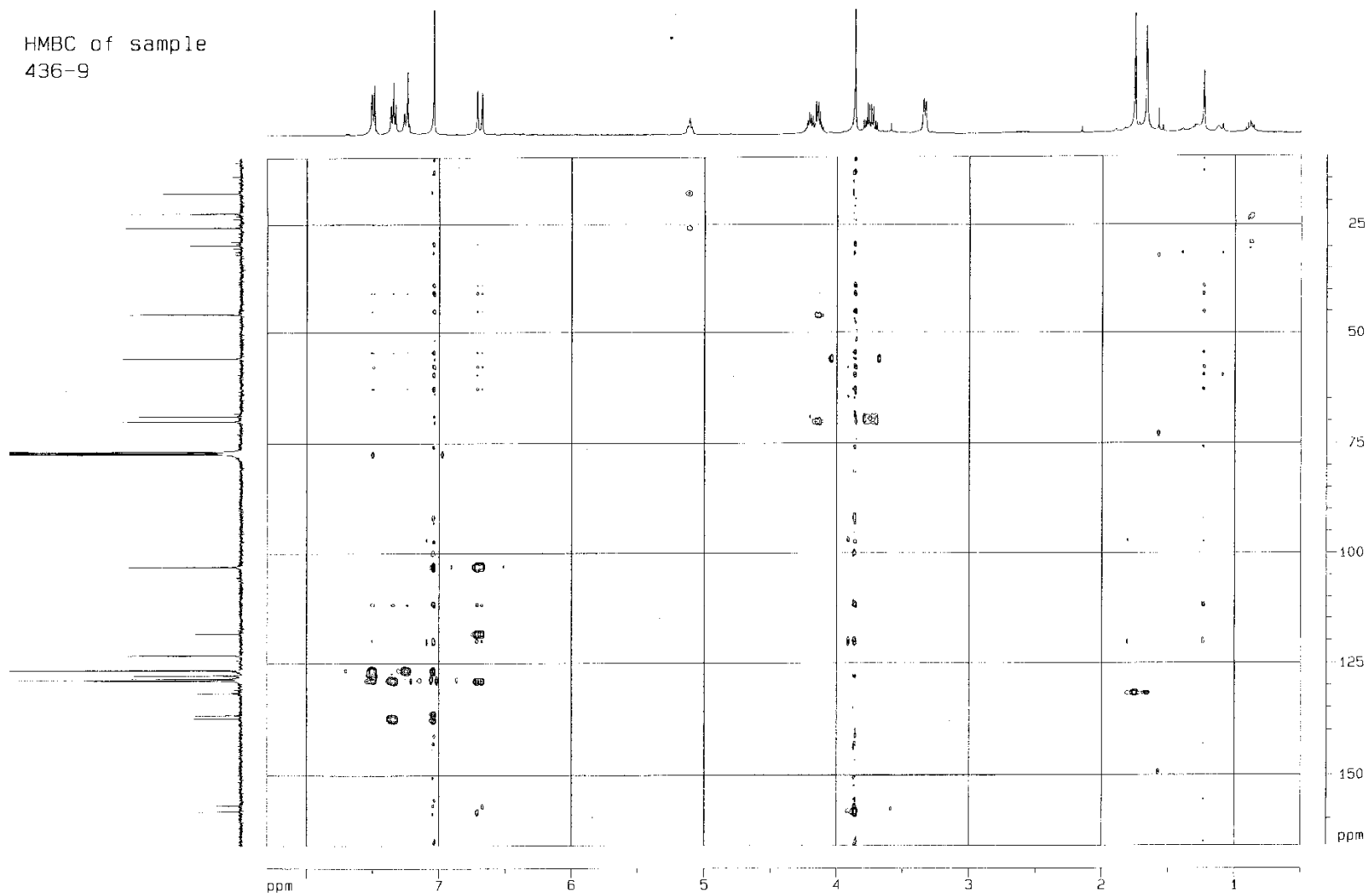


Figure 6. HMBC spectrum of 1 (in CDCl_3).

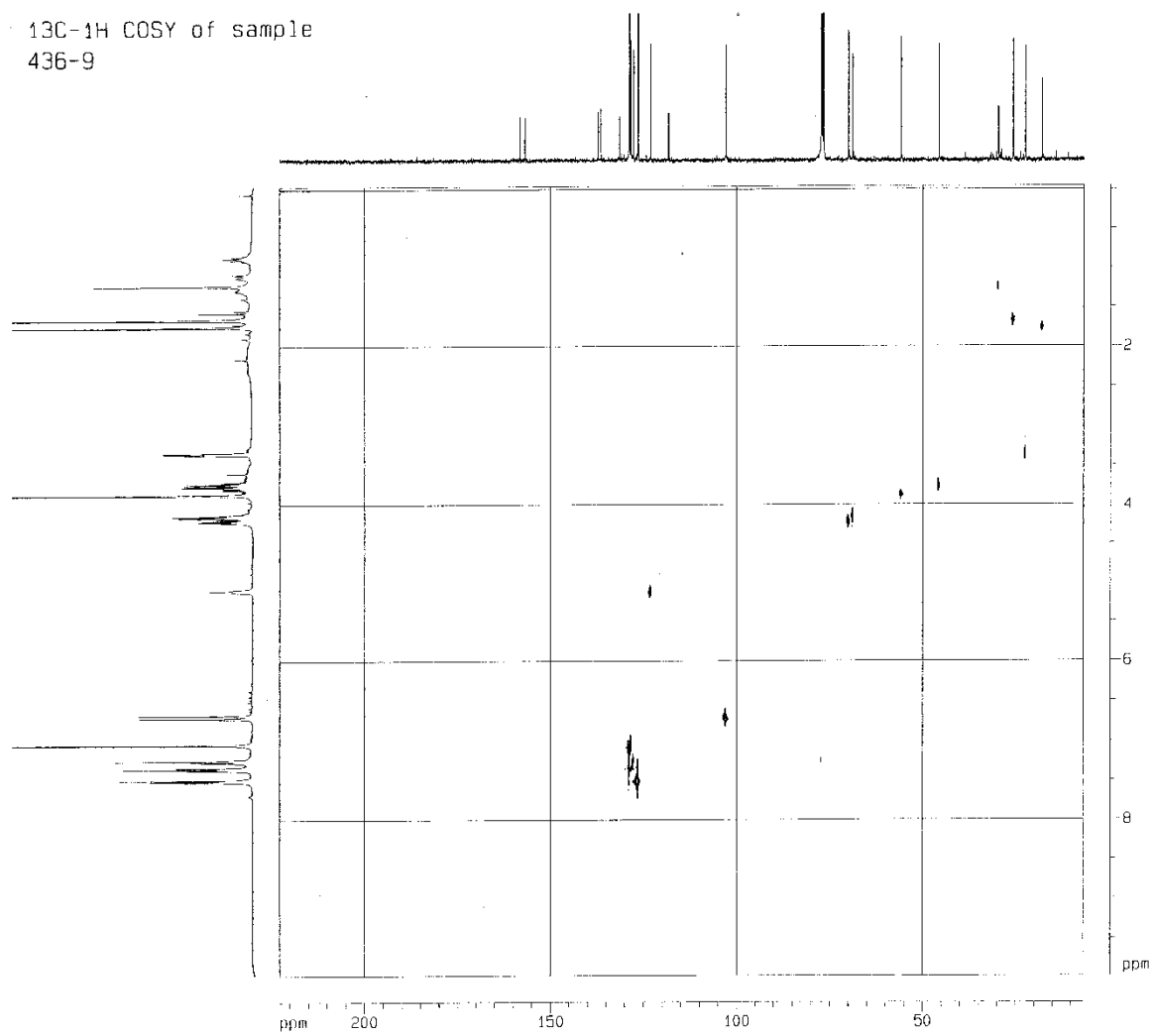


Figure S7. ^{13}C - ^1H COSY spectrum of **1** (in CDCl_3).

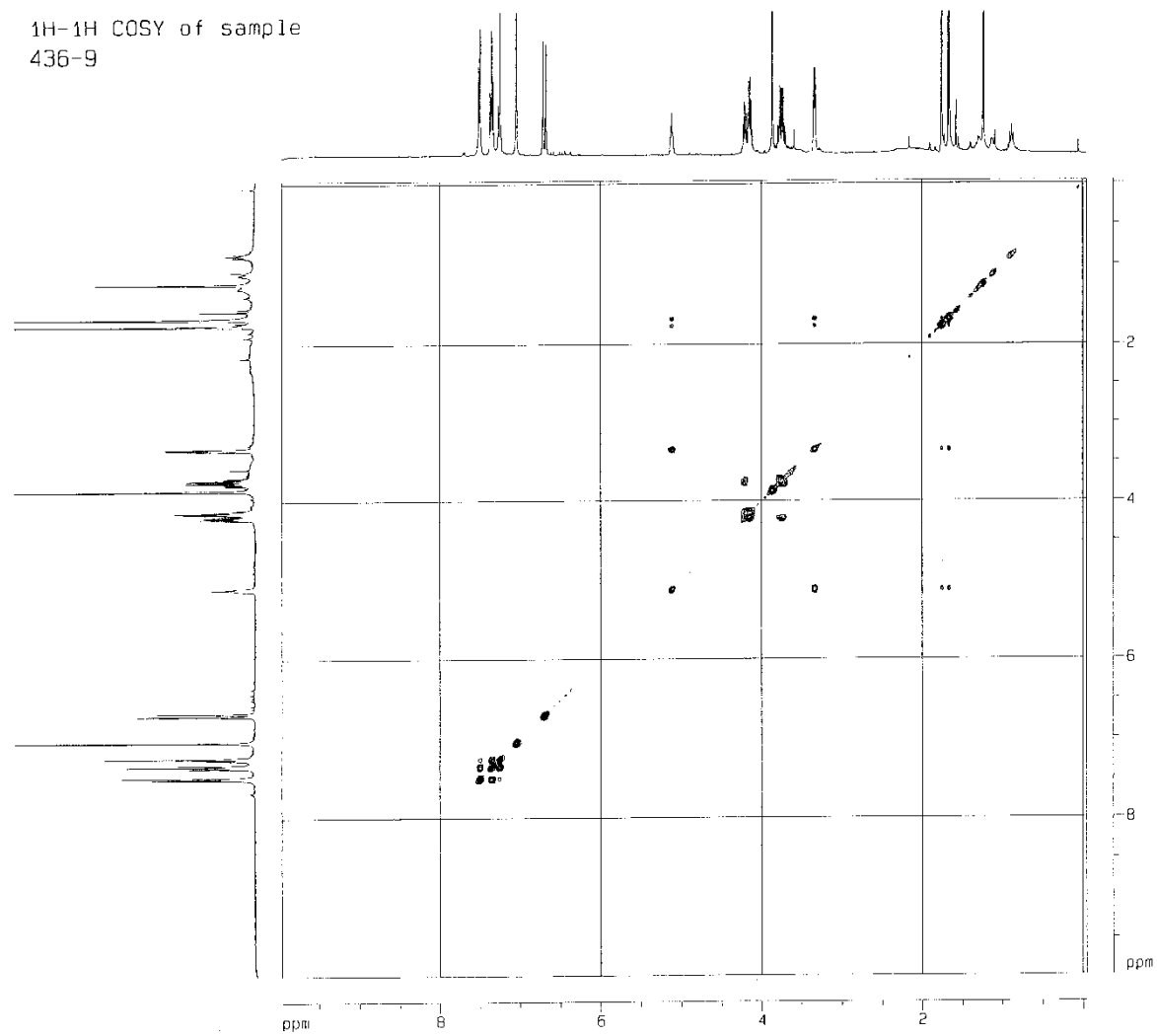


Figure S8. ^1H - ^1H COSY spectrum of 1 (in CDCl_3).

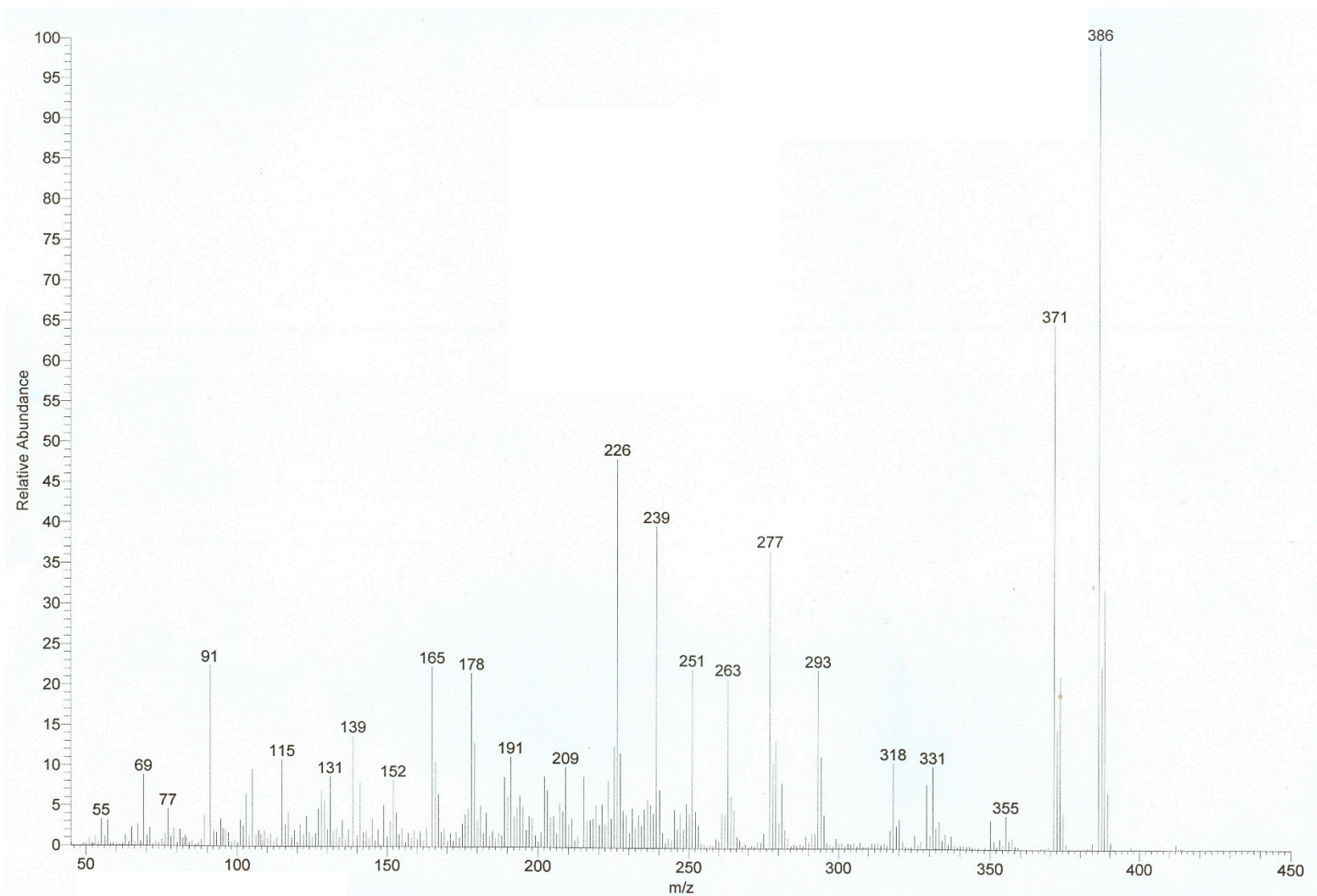


Figure S9. EI MS spectrum of 1.

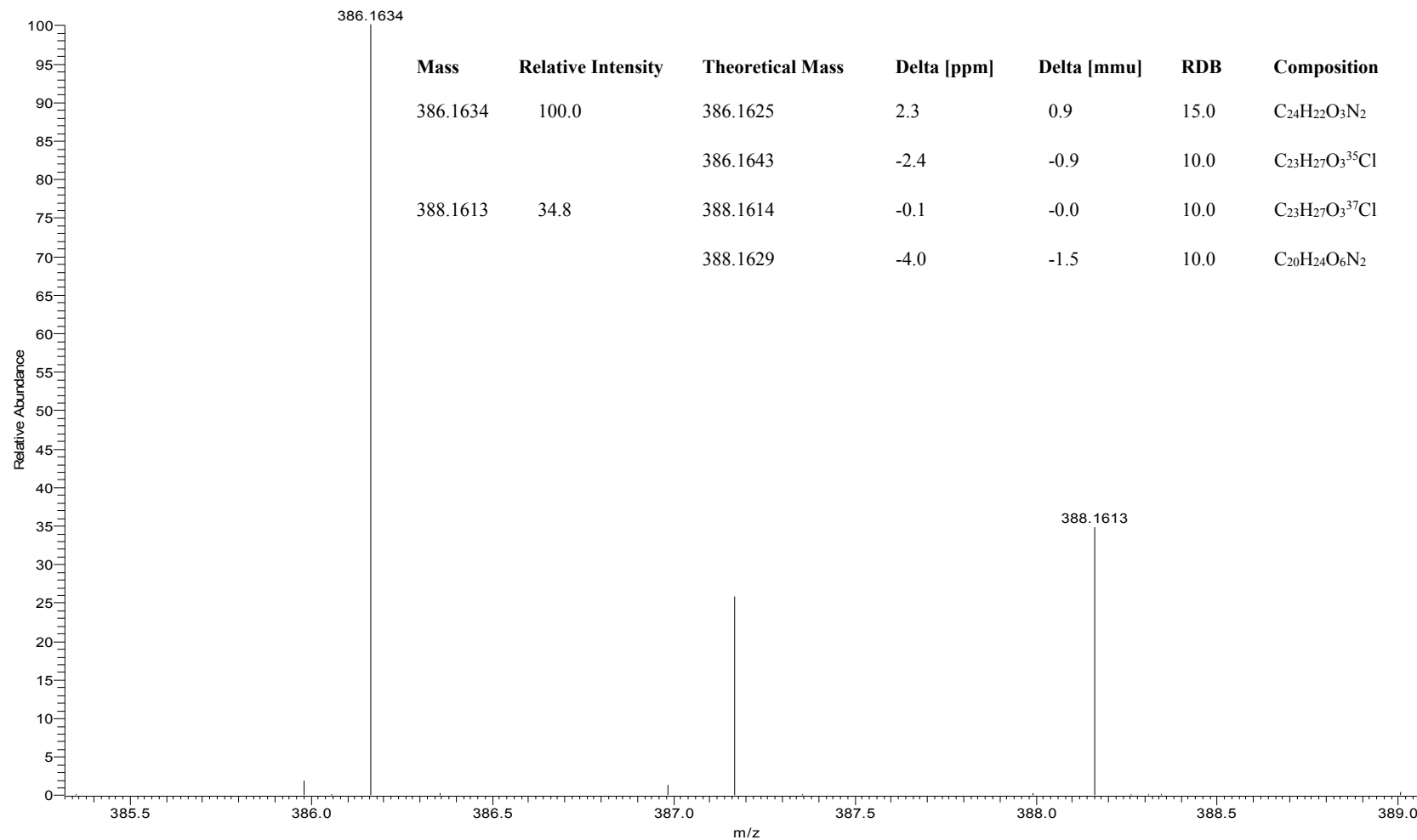


Figure S10. HR EIMS spectrum of 1.

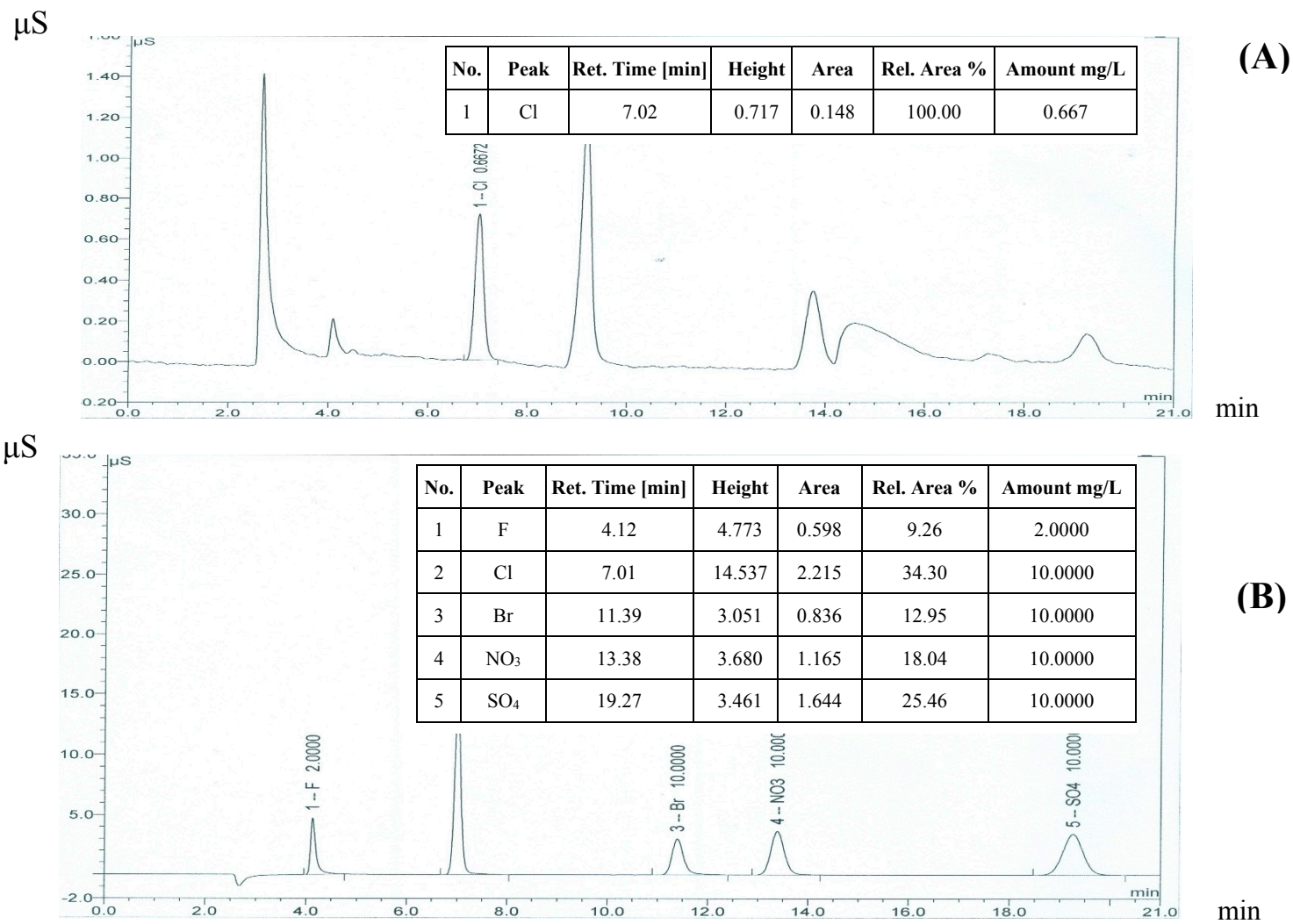


Figure S11. Ion chromatograms for chlorine determination of 1 (EN 14582-2007). (A) compound 1; (B) mixed standards.