

# Supplementary Materials: Wild Bitter Melon Leaf Extract Inhibits *Porphyromonas gingivalis*-Induced Inflammation: Identification of Active Compounds through Bioassay-Guided Isolation

Tzung-Hsun Tsai, Wen-Cheng Huang, How-Ting Ying, Yueh-Hsiung Kuo, Chien-Chang Shen, Yin-Ku Lin and Po-Jung Tsai

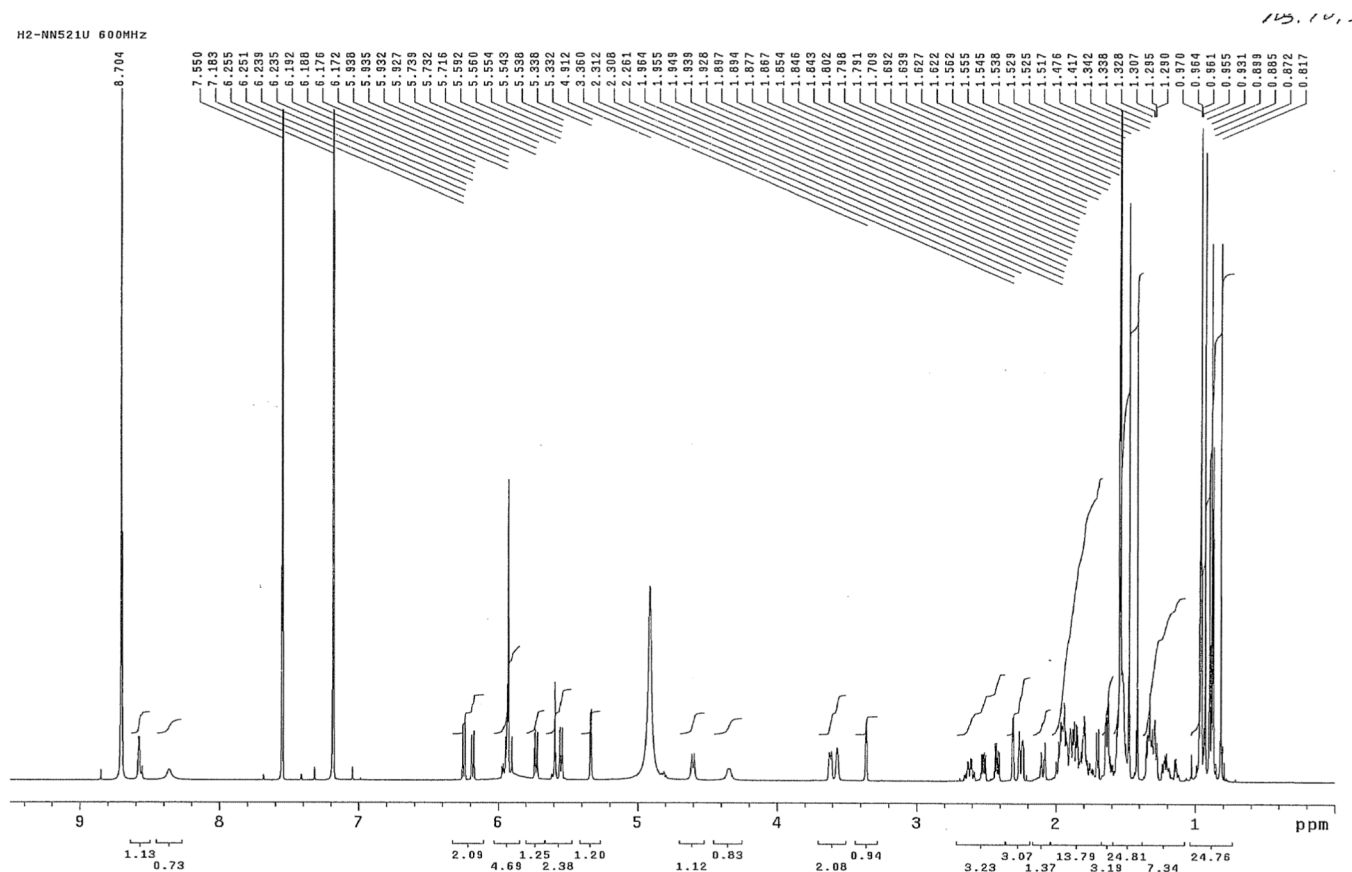
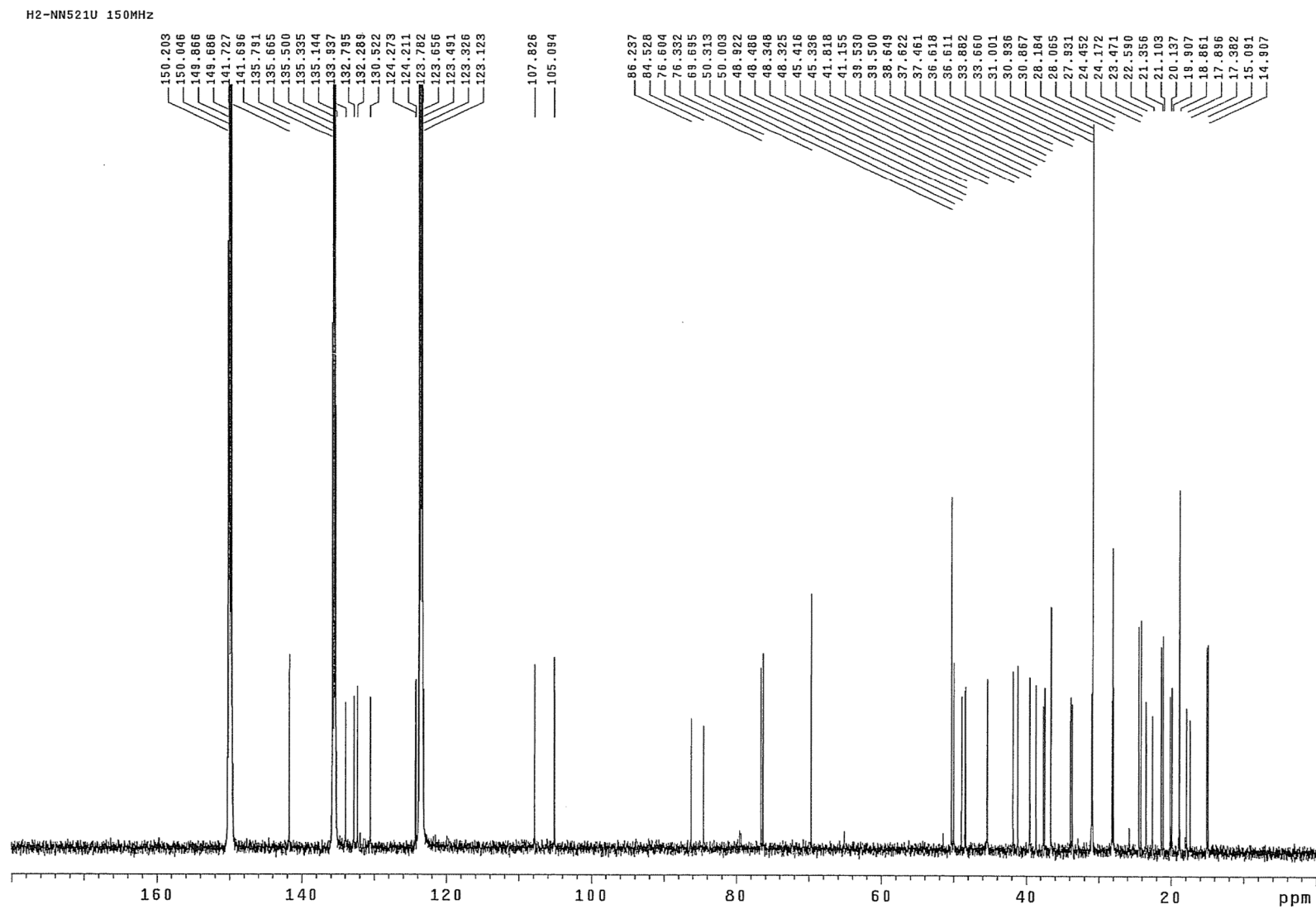


Figure S1. <sup>1</sup>H-NMR (600 MHz) of 1.

Figure S2.  $^{13}\text{C}$ -NMR (150 MHz) of 1.

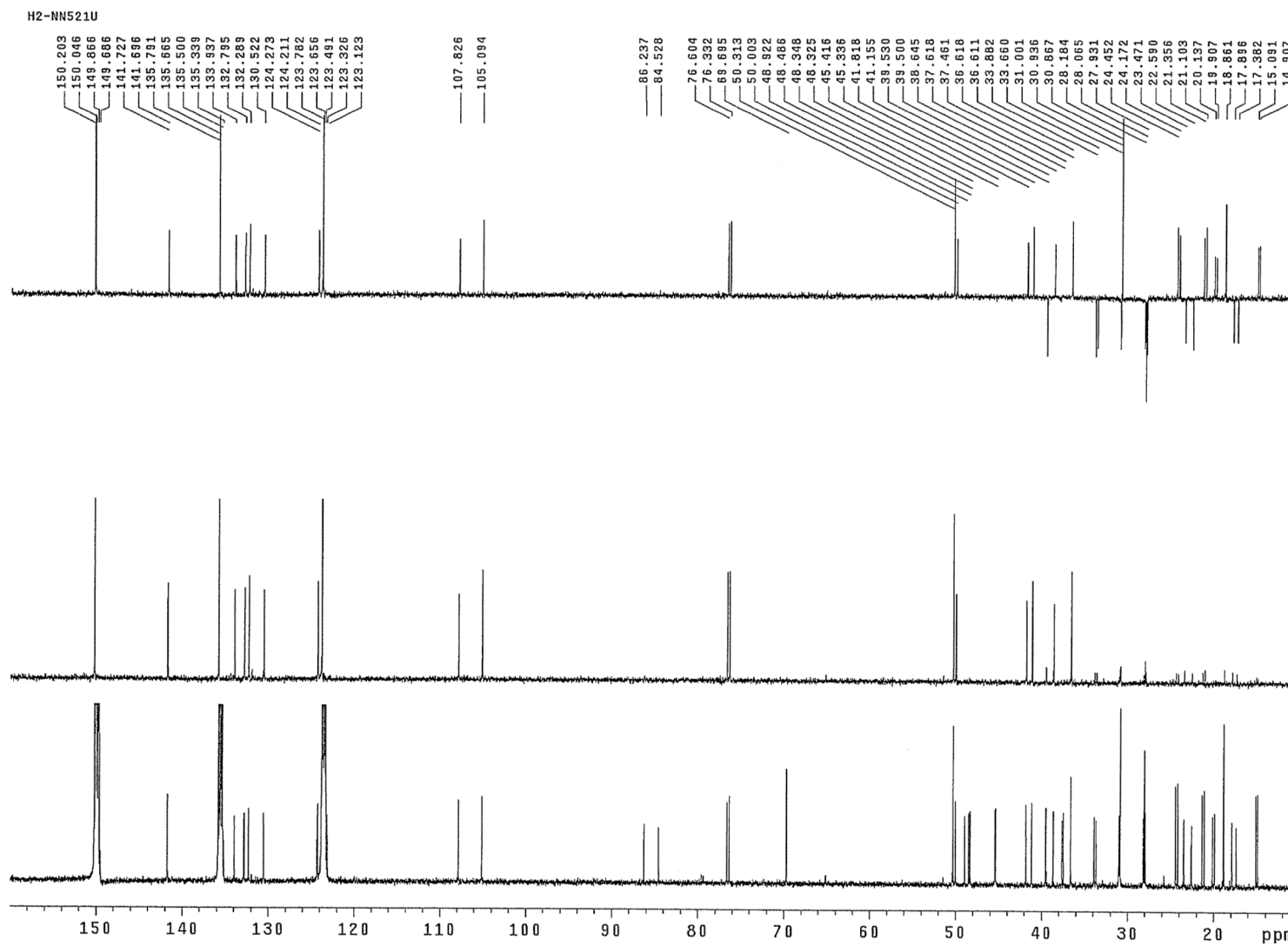


Figure S3. DEPT spectrum of 1.

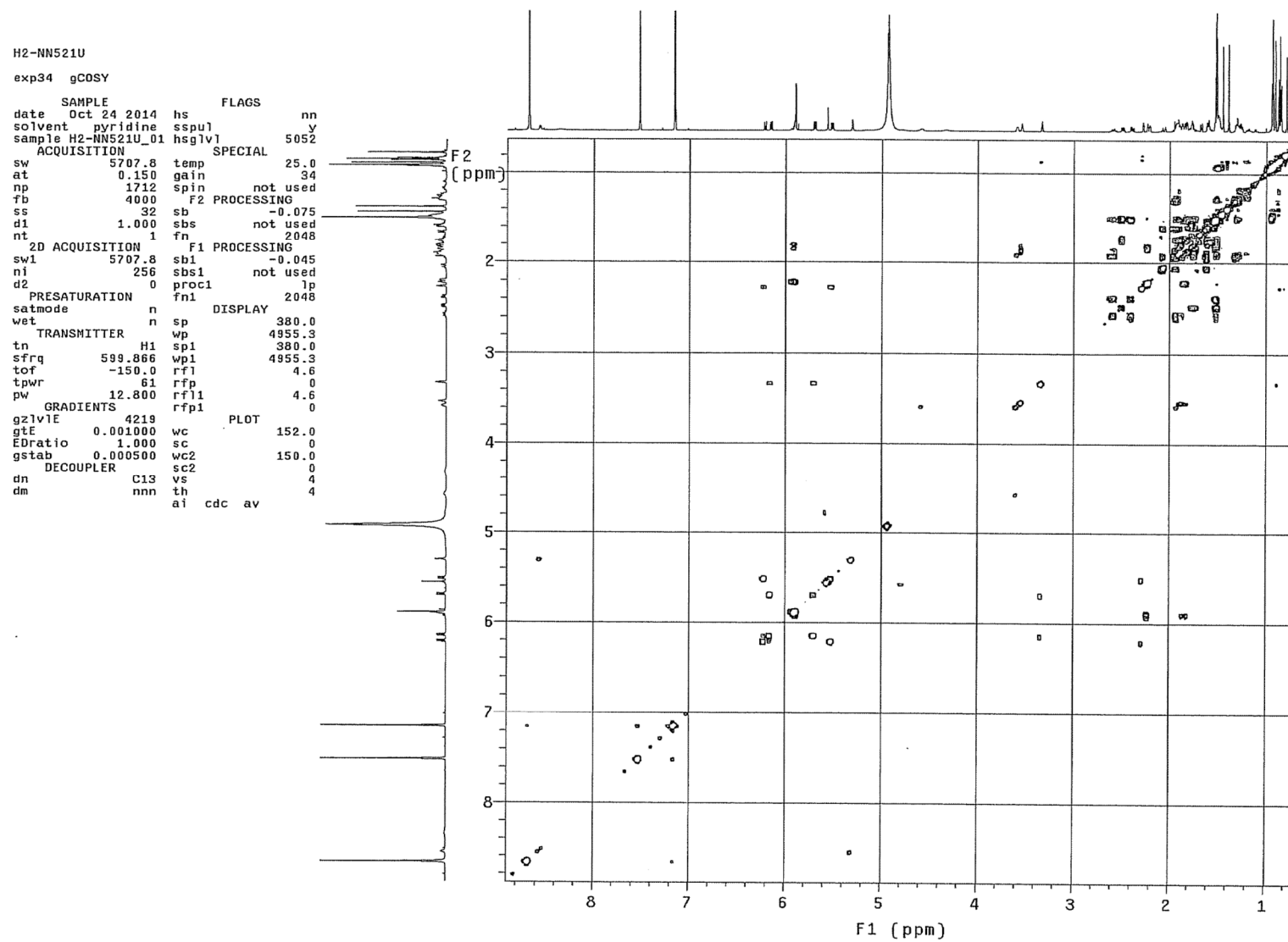


Figure S4. gCOSY of 1.

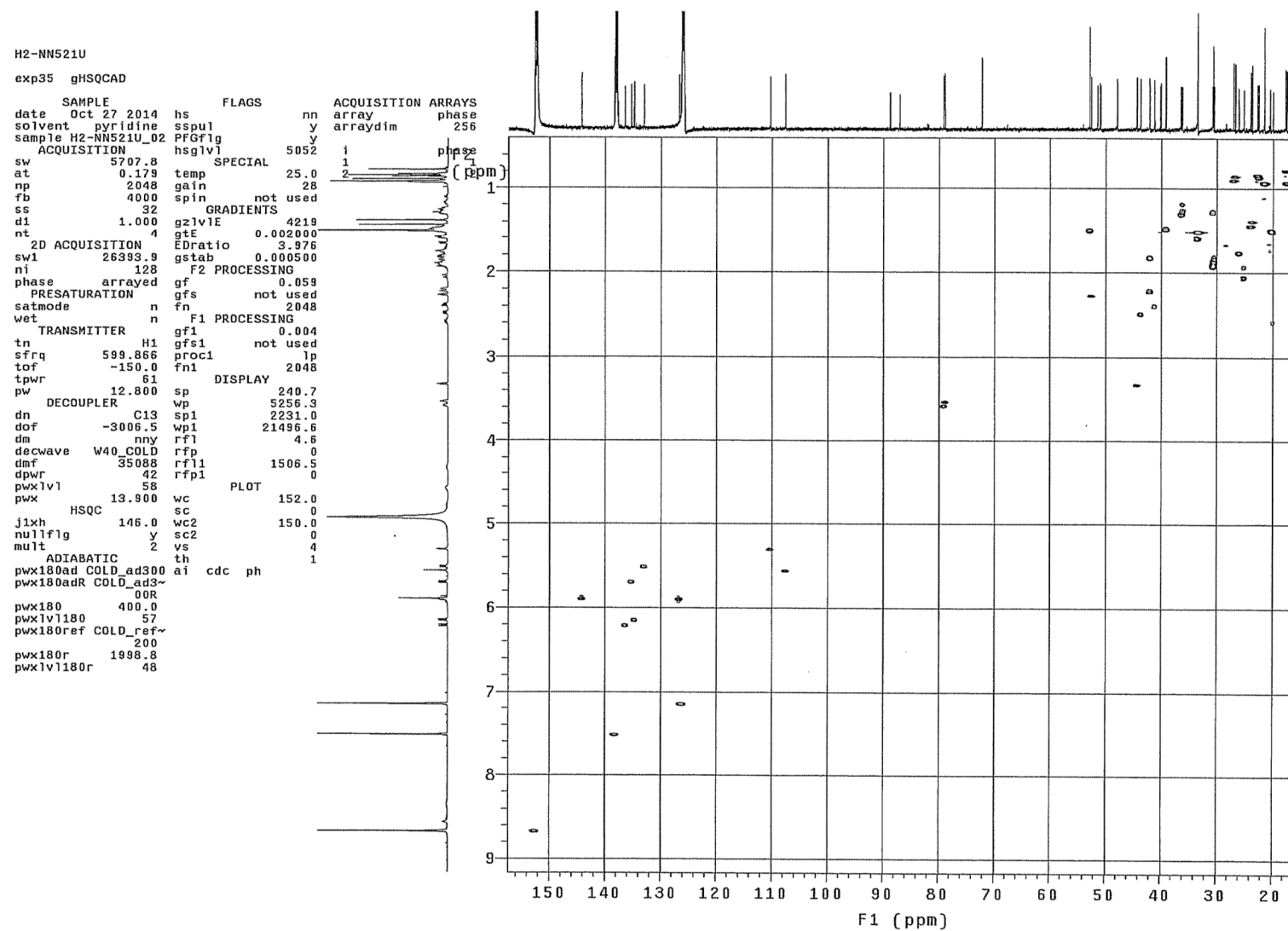


Figure S5. gHSQCAD of 1.

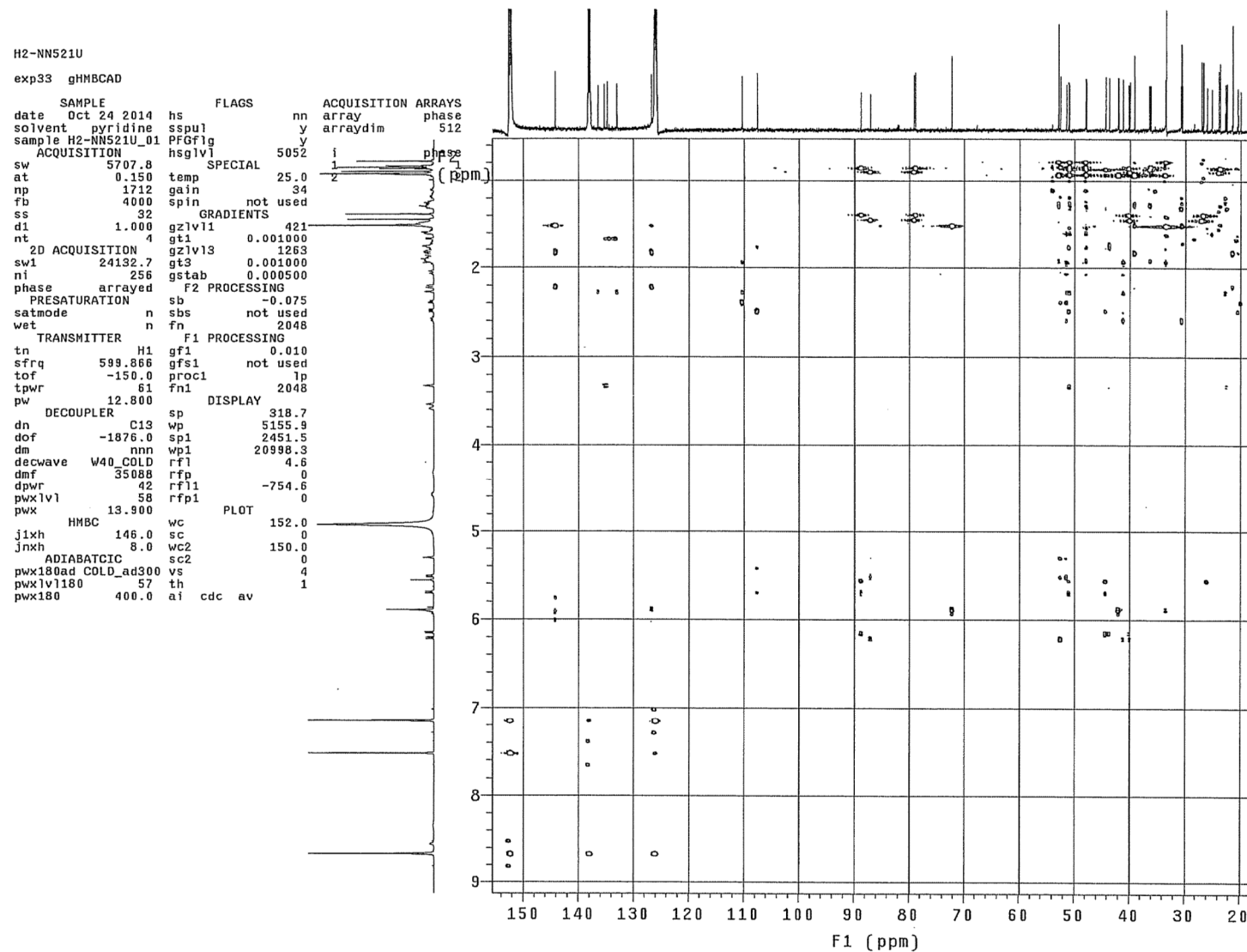
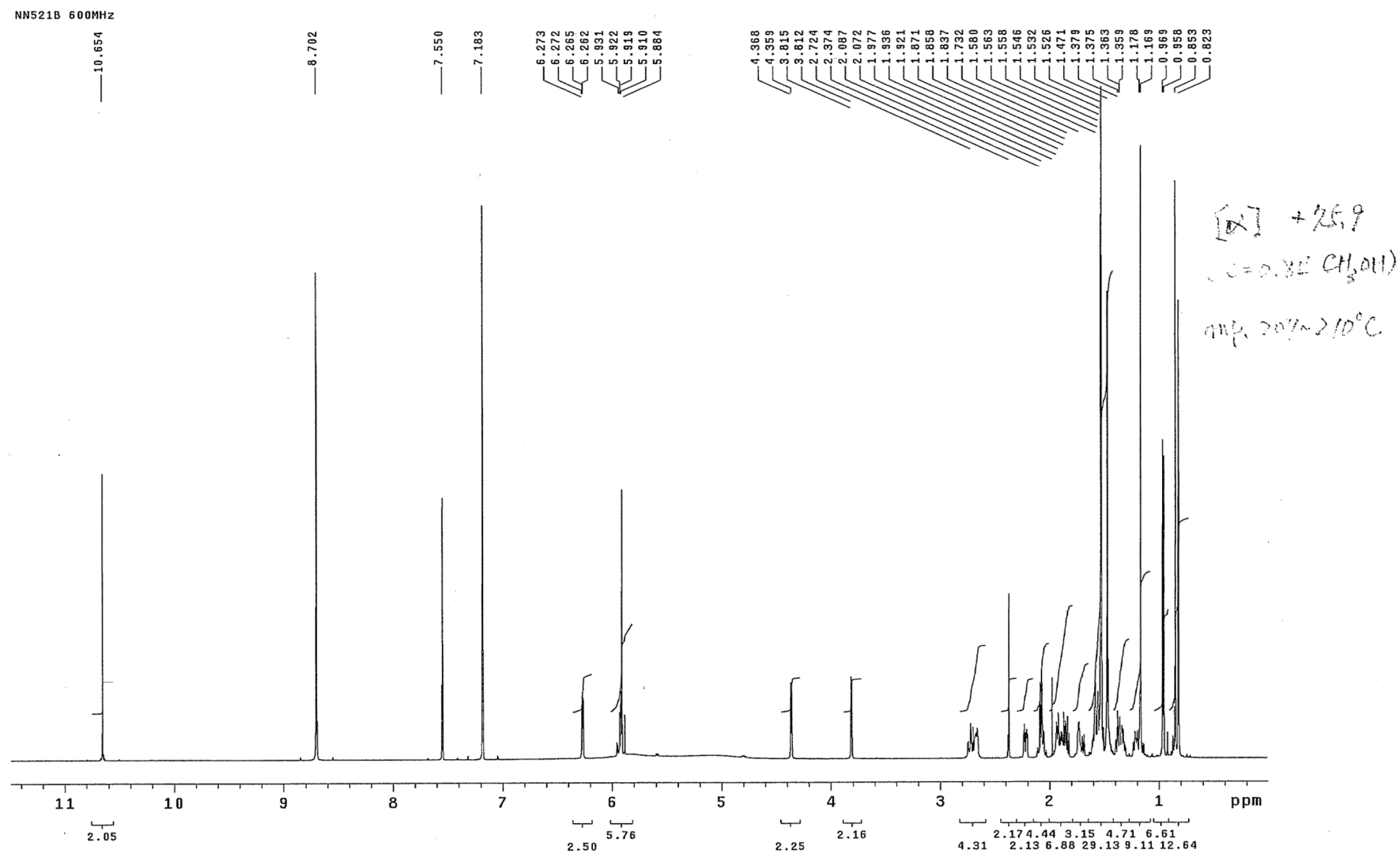


Figure S6. gHMBCAD of 1.

Figure S7.  $^1\text{H-NMR}$  (600 MHz) of 2.

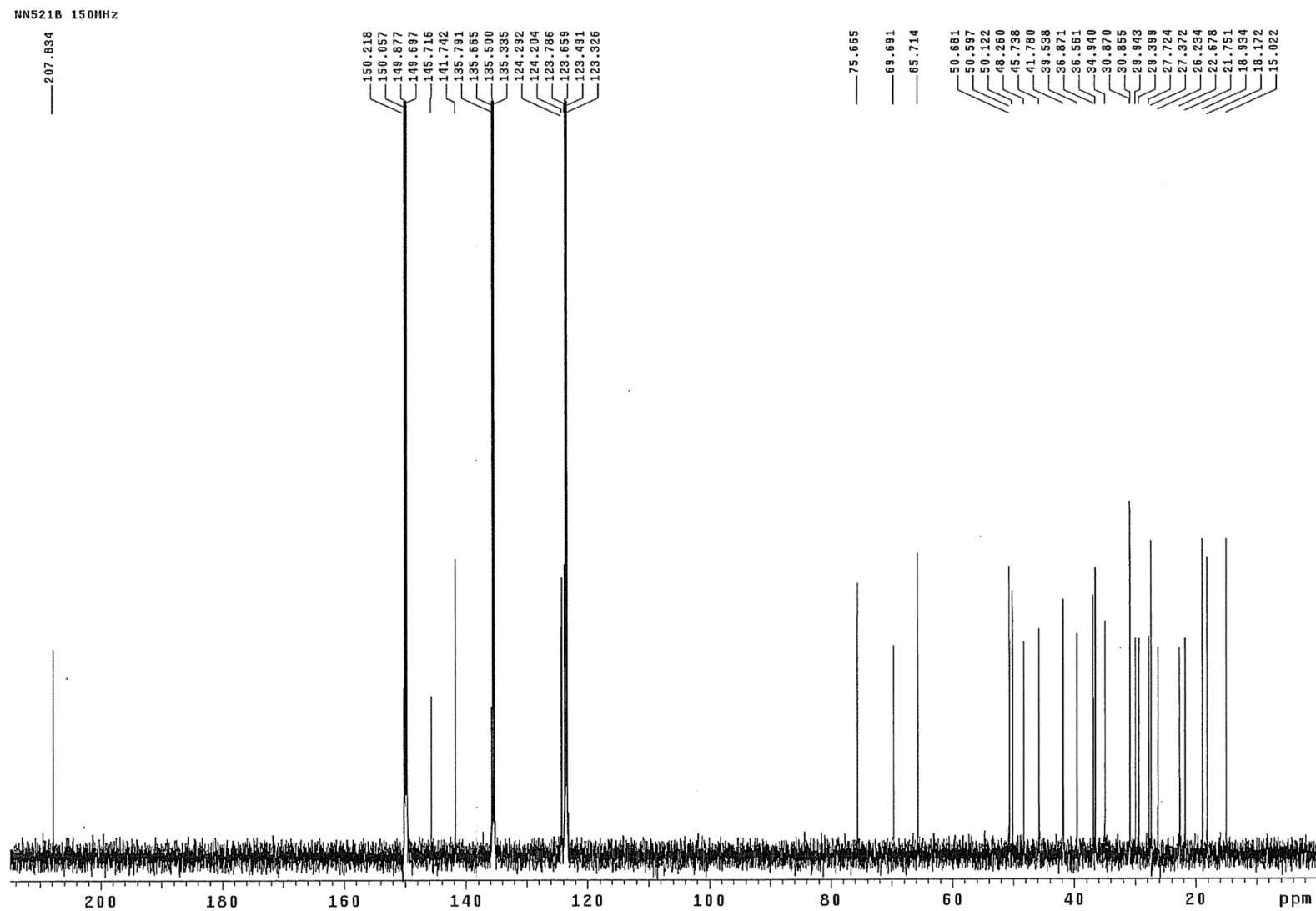


Figure S8.  $^{13}\text{C}$ -NMR (150 MHz) of 2.



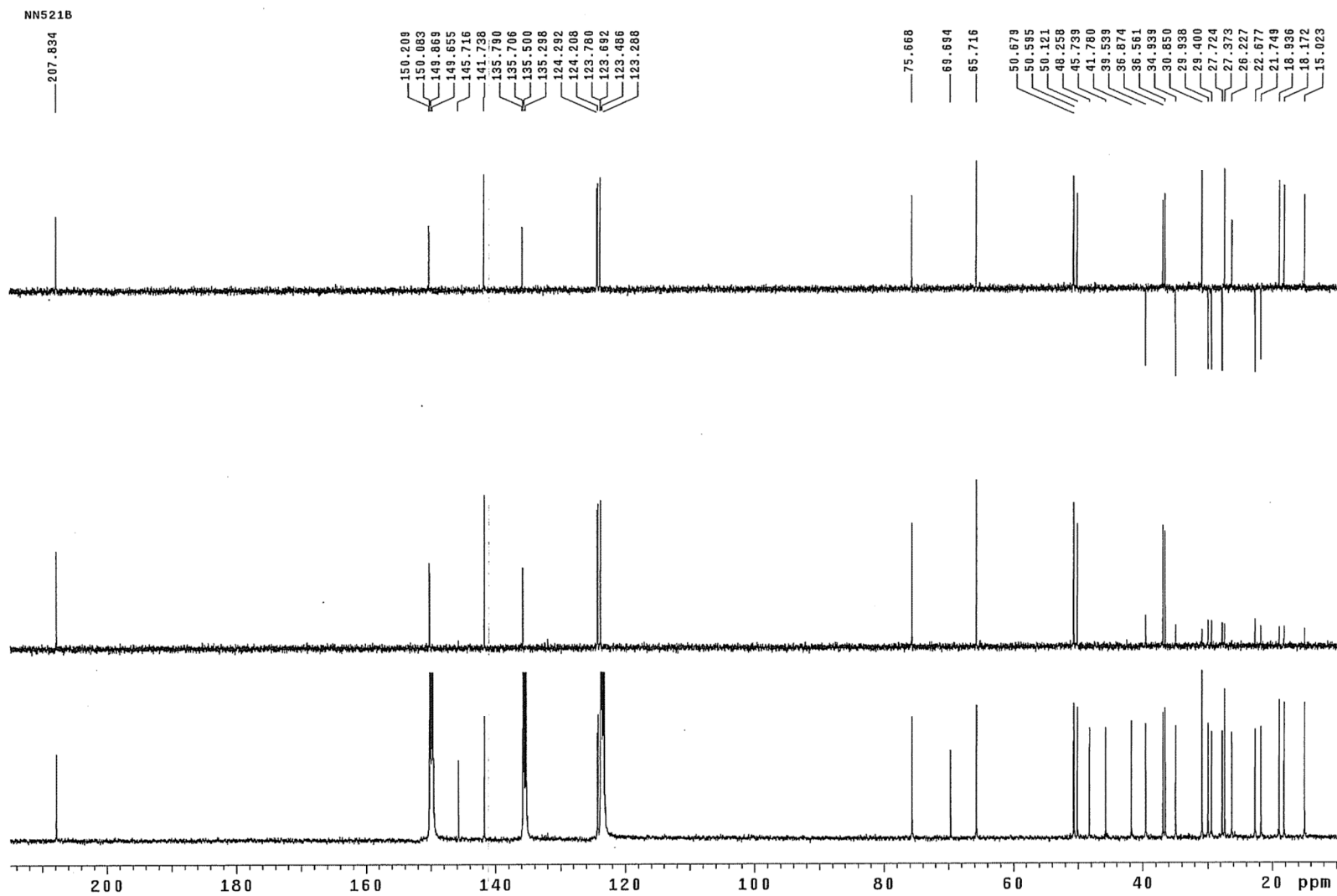


Figure S9. DEPT spectrum of 2.

NN521B

exp3 gCOSY

SAMPLE		FLAGS	
date	Sep 12 2014	hs	nn
solvent	pyridine	sspu1	y
sample	NN521B_01	hsglv1	5280
ACQUISITION		SPECIAL	
sw	6906.1	temp	26.0
at	0.150	gain	32
np	2072	spin	not used
fb	4000	F2 PROCESSING	
ss	32	sb	-0.075
d1	1.000	sbs	not used
nt	1	fn	4096
2D ACQUISITION		F1 PROCESSING	
sw1	6906.1	sb1	-0.027
n1	256	sbs1	not used
d2	0	proc1	lp
PRESATURATION		fn1	
satmode	n	fn1	4096
wet	n	DISPLAY	
TRANSMITTER		sp	
tn	H1	wp	6154.1
sfrq	599.866	sp1	373.8
tof	449.9	wp1	6154.1
tpwr	62	rfl	3.8
pw	7.200	rfl1	0
GRADIENTS		rfl1	
gzlv1E	4405	rfl1	3.8
gtE	0.001000	rflp1	0
EDratio	1.000	PLOT	
gstab	0.000500	wc	150.0
DECOUPLER		sc	
dn	C13	wc2	150.0
dm	nnn	sc2	0
		vs	160
		th	4
		ai	cdc av

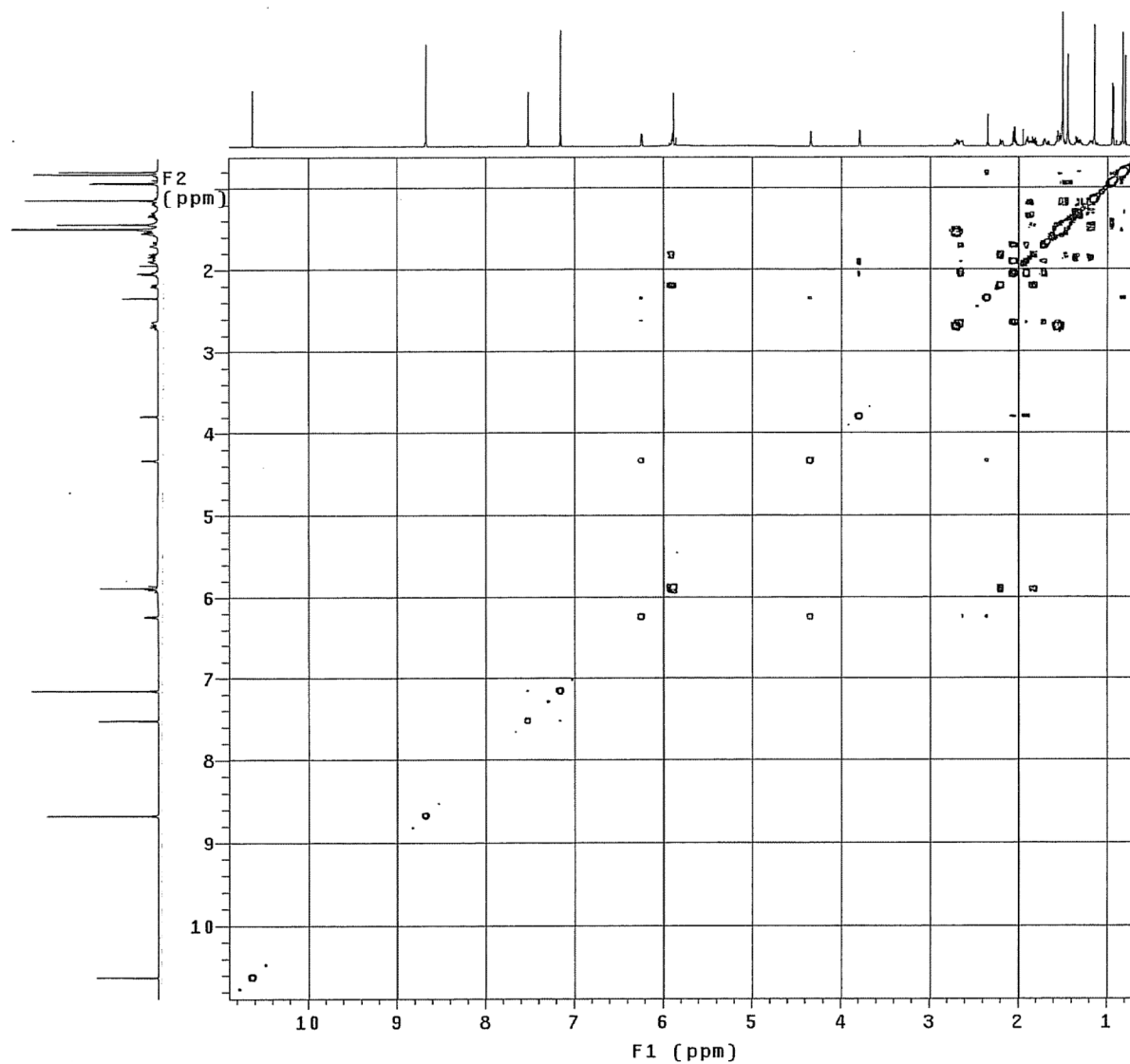


Figure S10. gCOSY of 2.

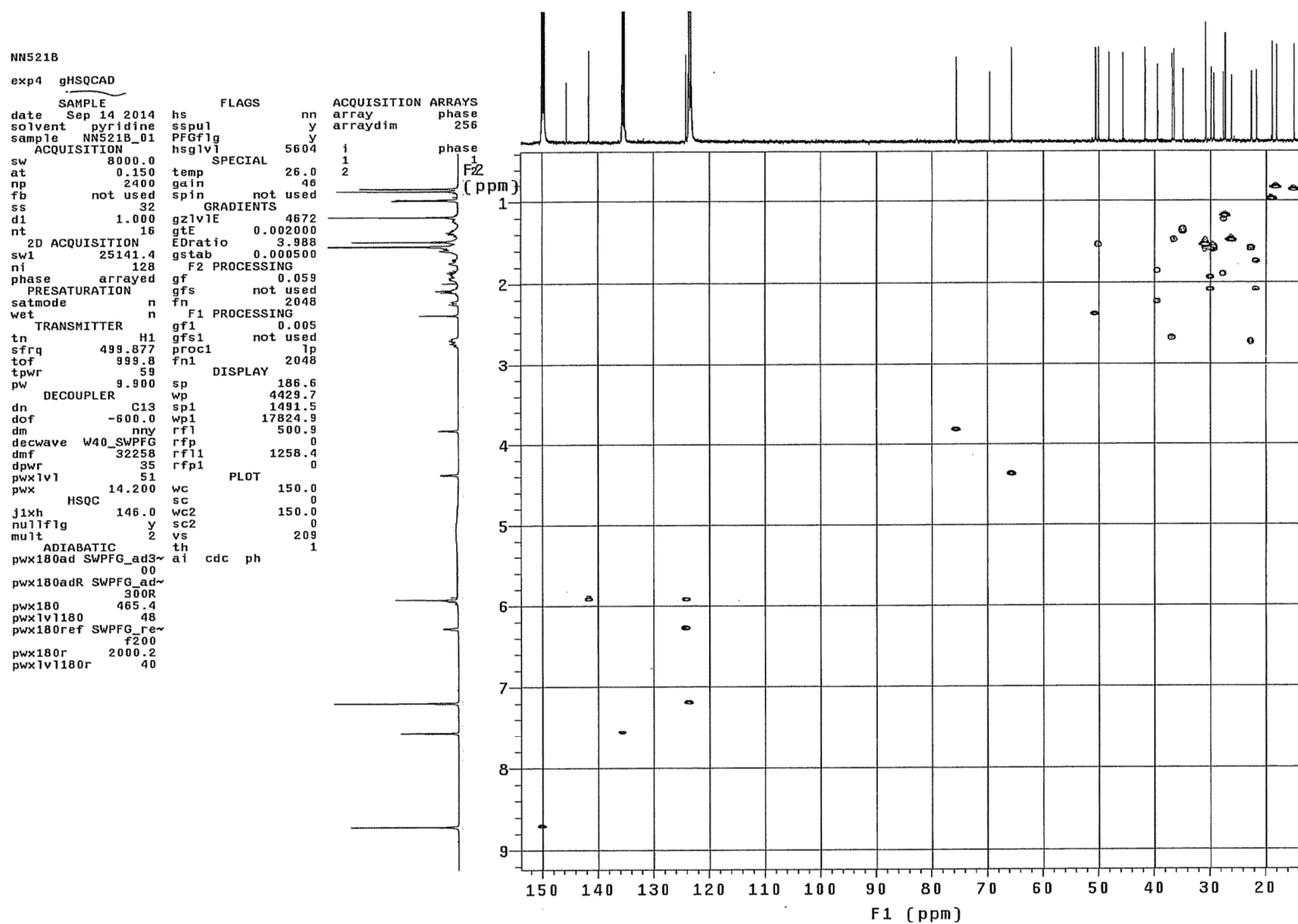


Figure S11. gHSQCAD of compound 2.

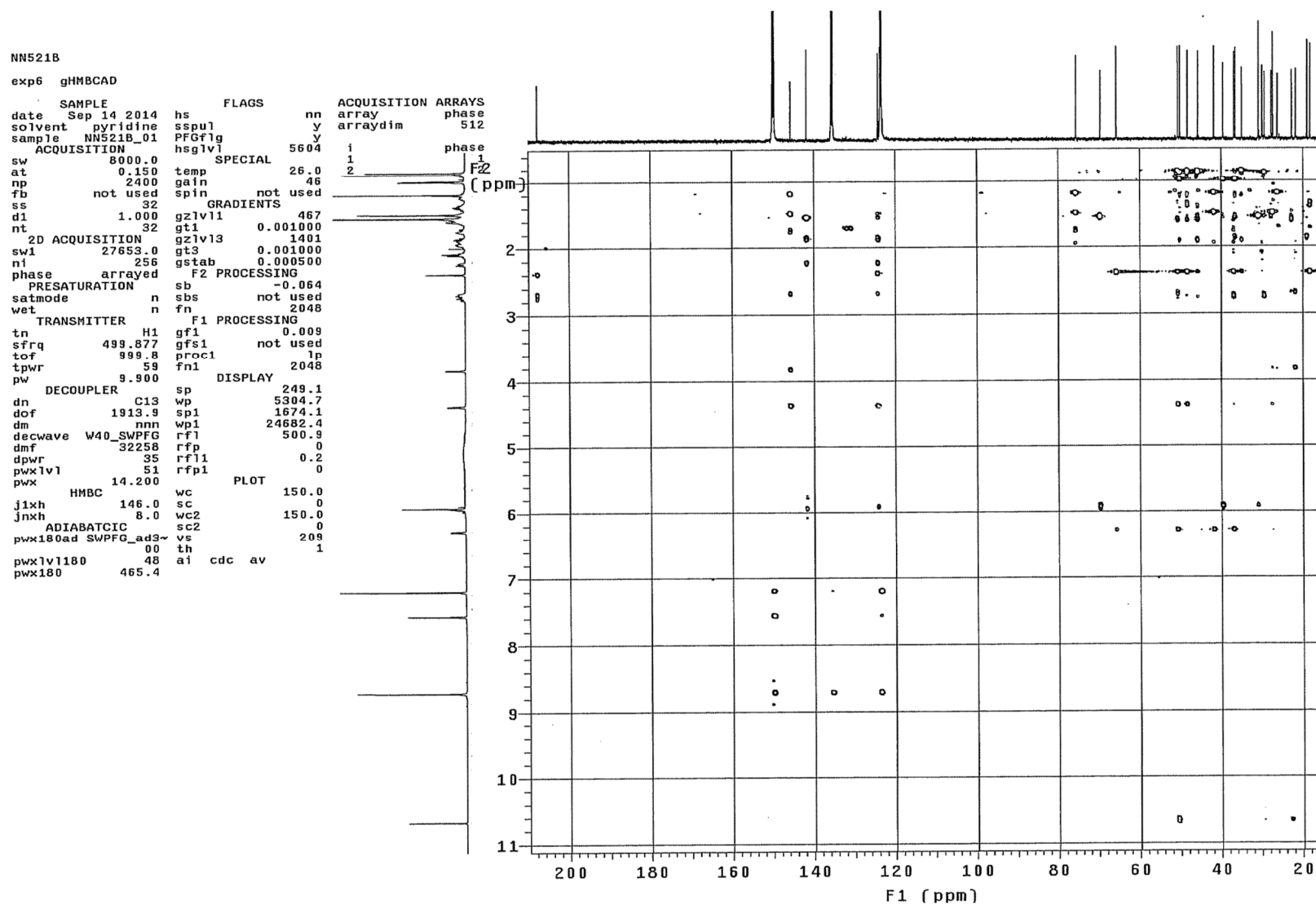


Figure S12. gHMBCAD of 2.