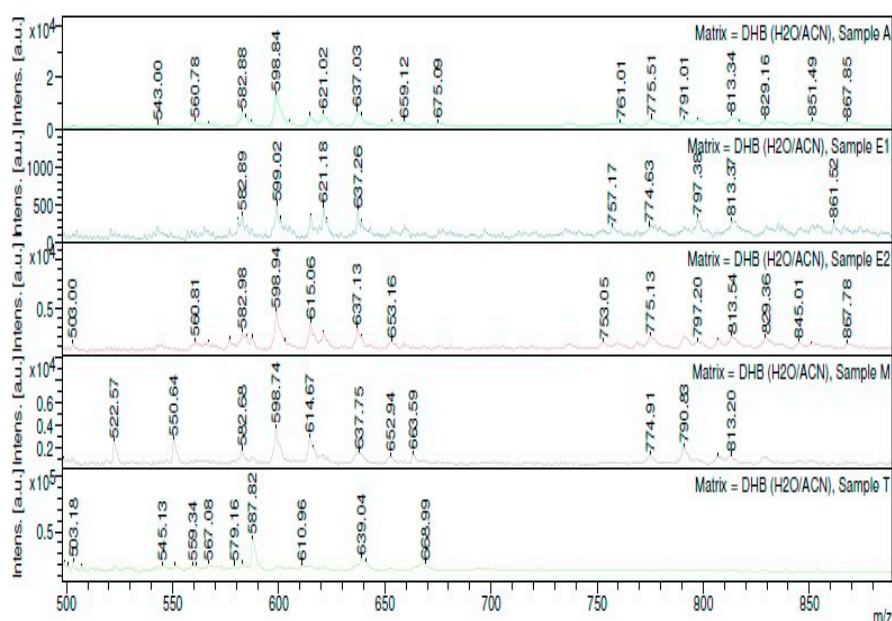
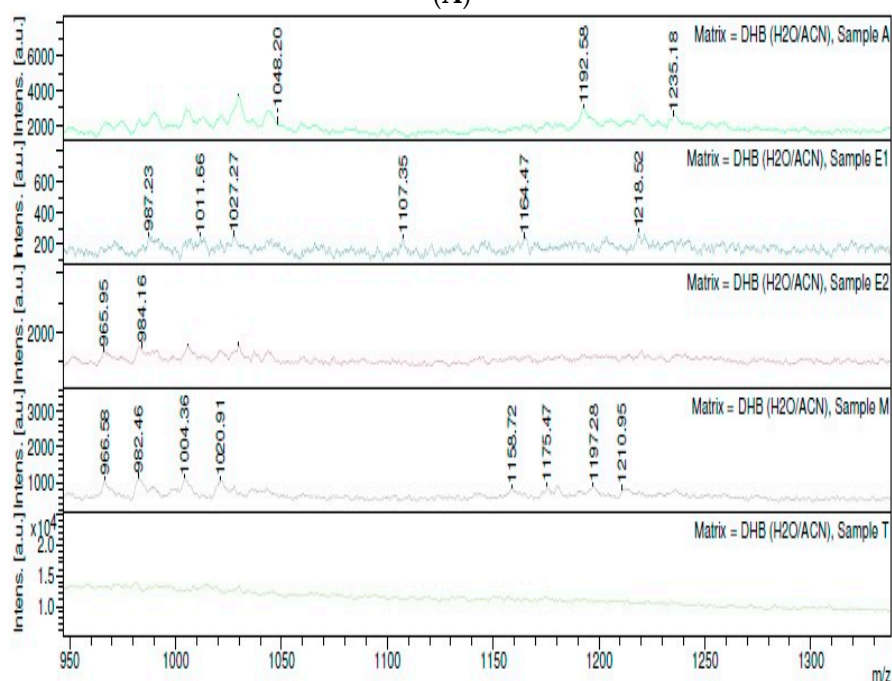


Supplementary Materials: *Eriobotrya japonica* Water Extract Characterization: An Inducer of Interferon-Gamma Production Mainly by JAK-STAT Pathway

Khalid Z. Matalka, Nada A. Abdulridha, Mujtaba M. Badr, Kenza Mansoor, Nidal A. Qinna and Fadi Qadan



(A)



(B)

Figure S1. MALDI-TOF MS peaks in WE, WP, MAU-EW, MAU-ME and MAU-AW. The presented figures are examples of what was obtained from the MALDI-TOF analysis. The above figures demonstrates the peaks obtained from m/z 500 to 890 (A) and from 900–1340 (B). Each of the extract or sub-fraction isolated from EJ leaves is denoted as E1: WE, E2: WP, A: MAU-AW, M: MAU-ME, and T: MAU-EW.