

Supplementary Materials: Biotransformation of Resveratrol: New Prenylated *trans*-Resveratrol Synthesized by *Aspergillus* sp. SCSIOW2

Liyan Wang, Yanhua Wu, Yongtao Chen, Jiaxin Zou and Xiaofan Li

Table S1. Conformer distribution of **1** in solvated models (methanol) calculation at the B3LYP/aug-cc-PVDZ level.

Conformers	Contribution %
1	5.50
2	4.99
3	4.21
4	4.13
5	3.63
6	3.30
7	2.88
8	2.78
9	2.78
10	2.43
11	2.35
12	2.33
13	2.29
14	2.29
15	2.27
16	2.23
17	2.00
18	1.97
19	1.90
20	1.85
21	1.84
22	1.82

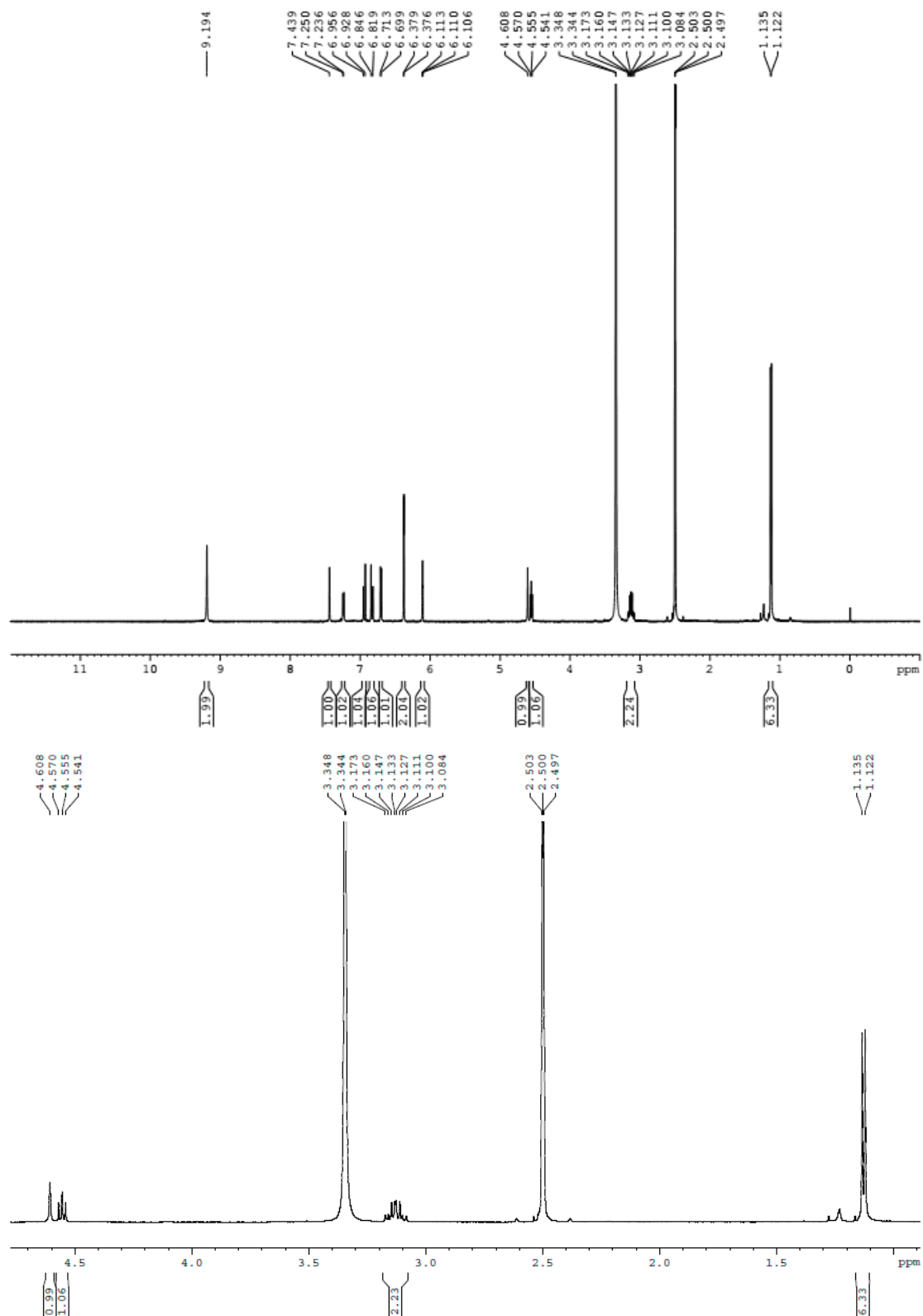


Figure S1. Cont.

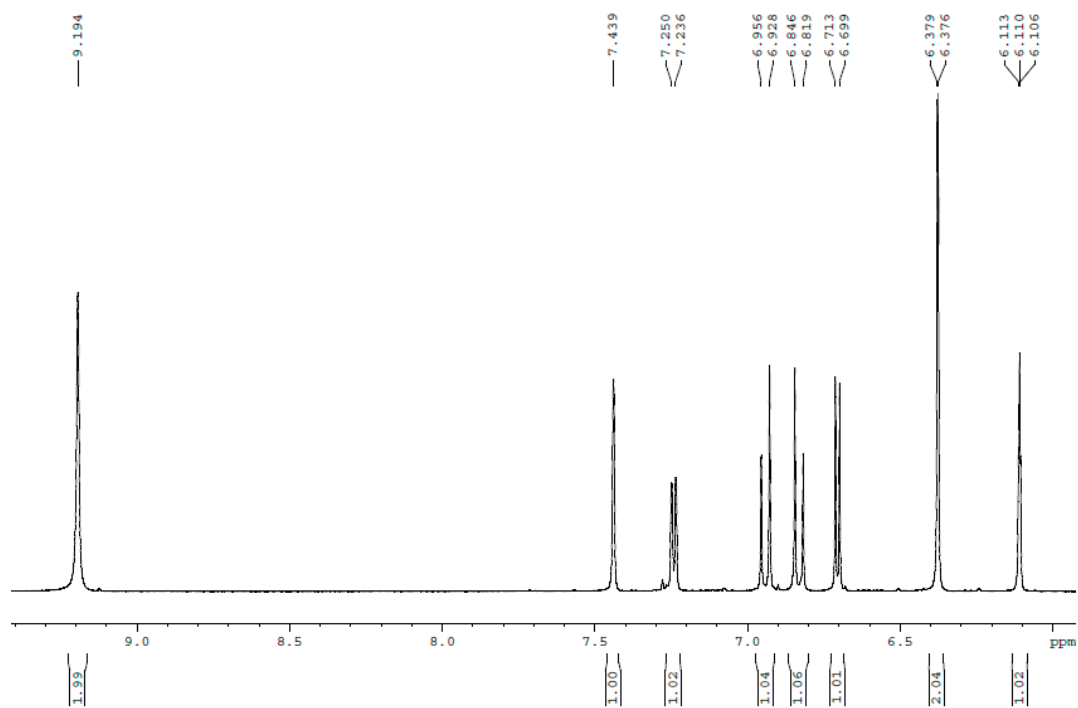
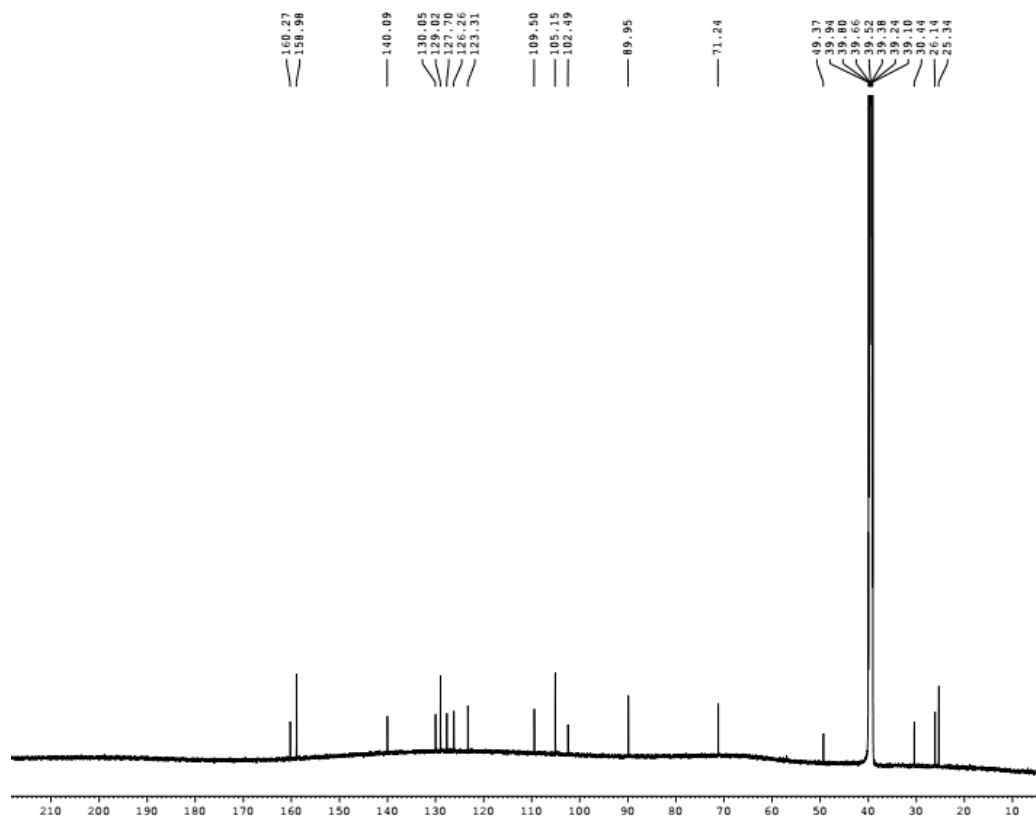
Figure S1. ¹H-NMR spectrum of 1 in DMSO-*d*₆.

Figure S2. Cont.

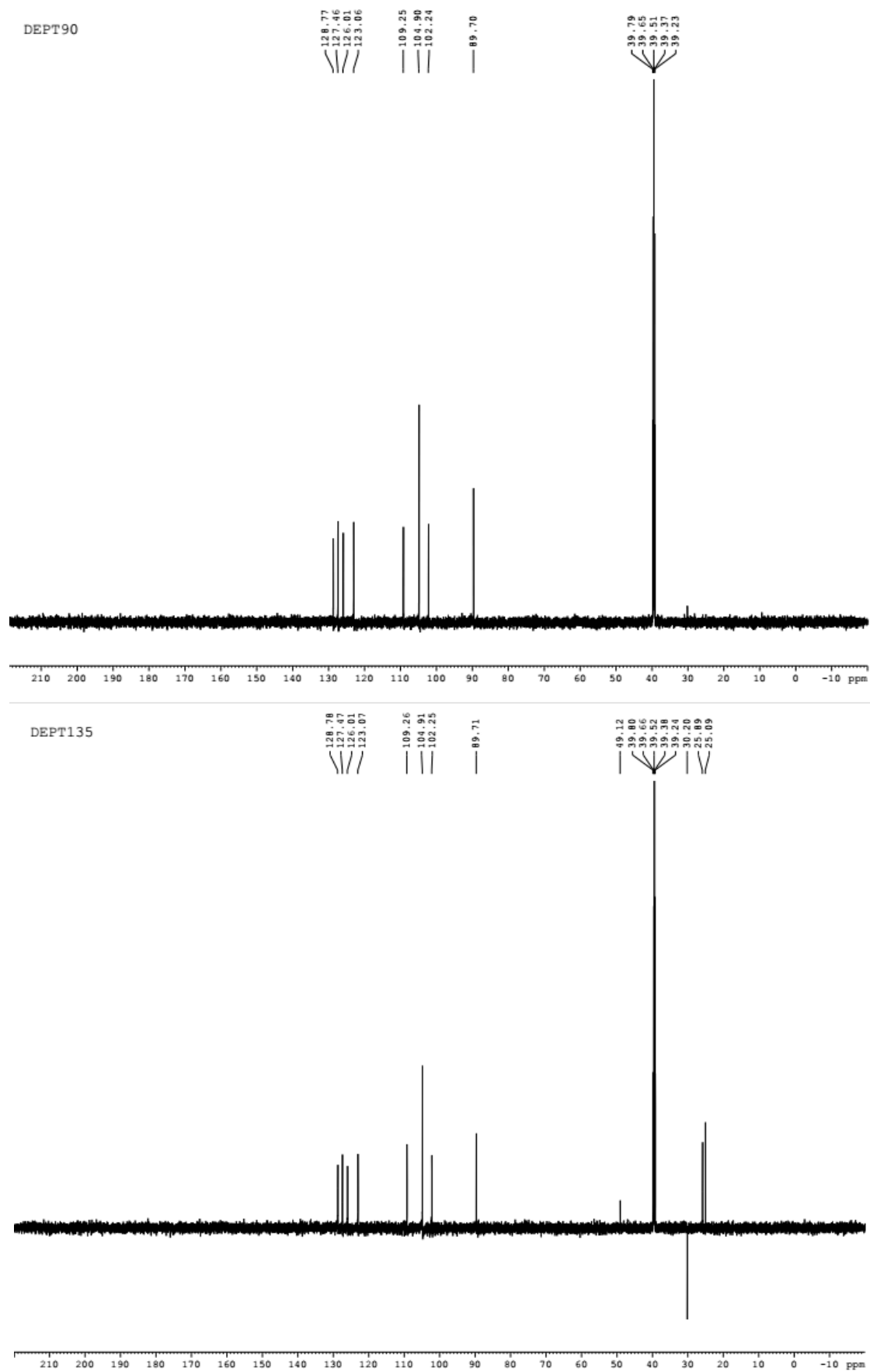


Figure S2. ^{13}C -NMR spectrum and DEPT of **1** in $\text{DMSO-}d_6$.

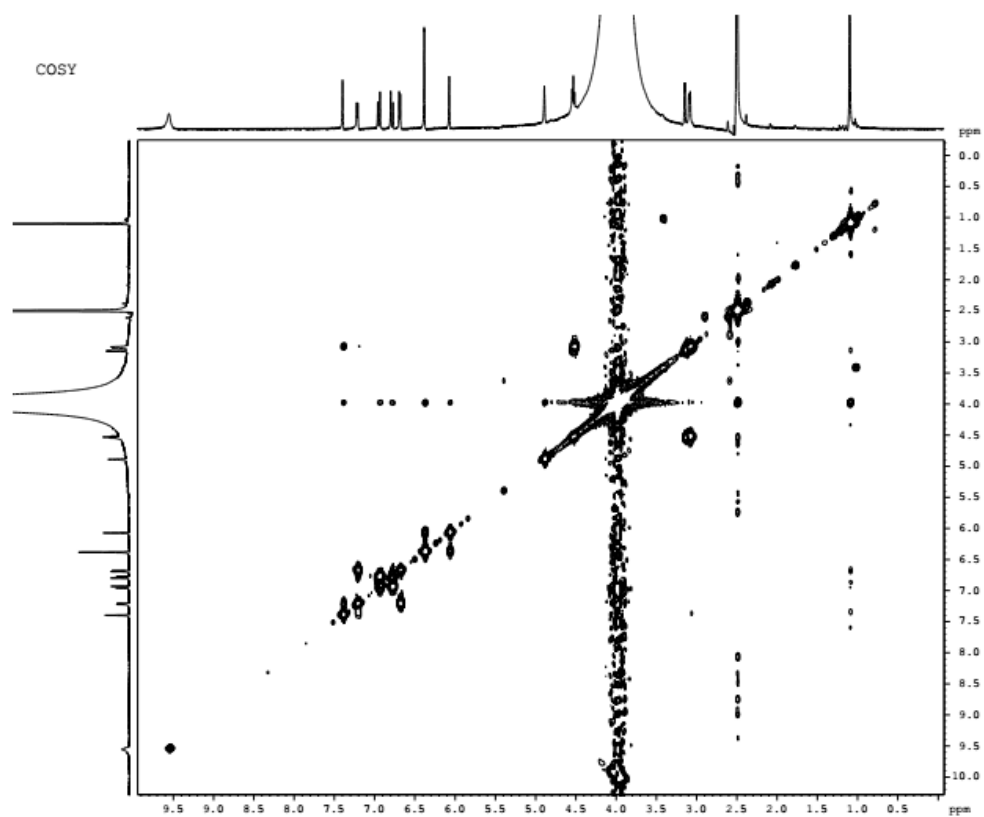


Figure S3. ^1H - ^1H COSY spectrum of **1** in $\text{DMSO-}d_6$.

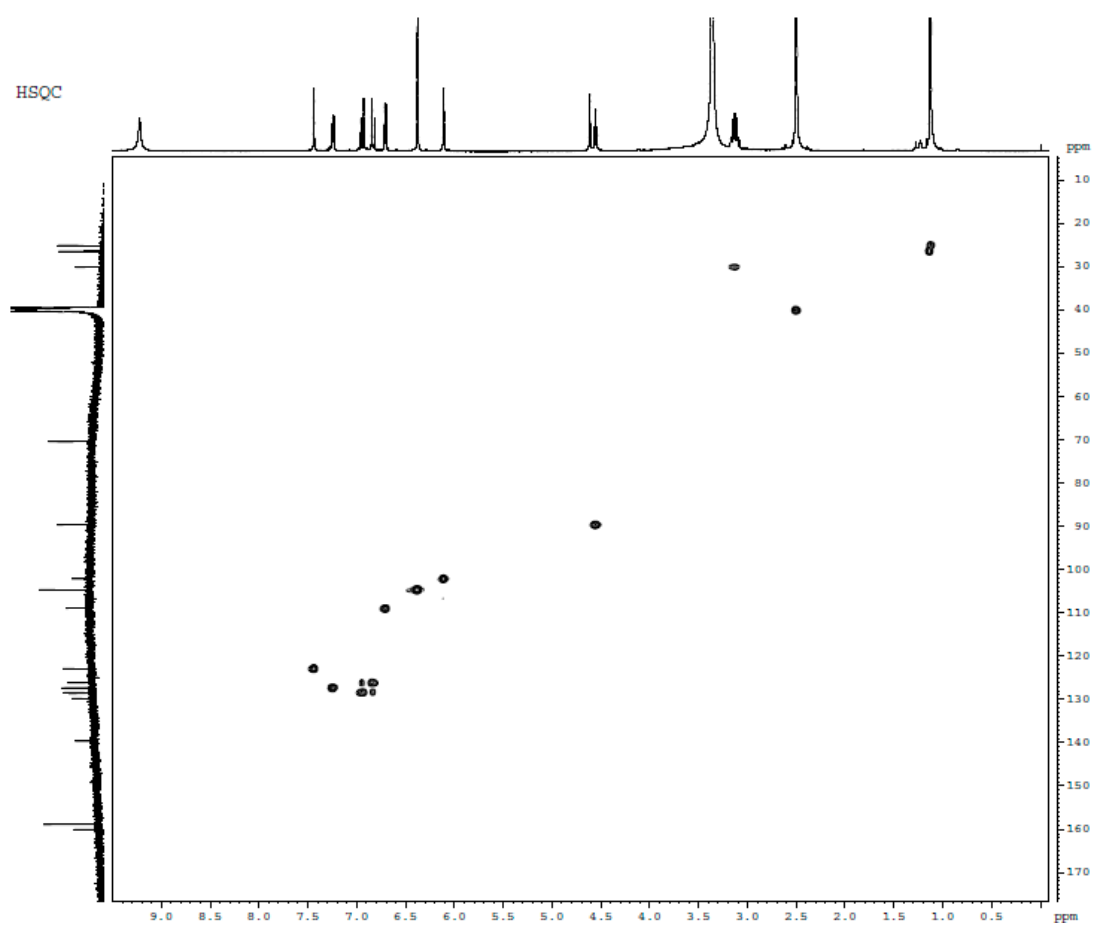


Figure S4. HSQC spectrum of **1** in $\text{DMSO-}d_6$.

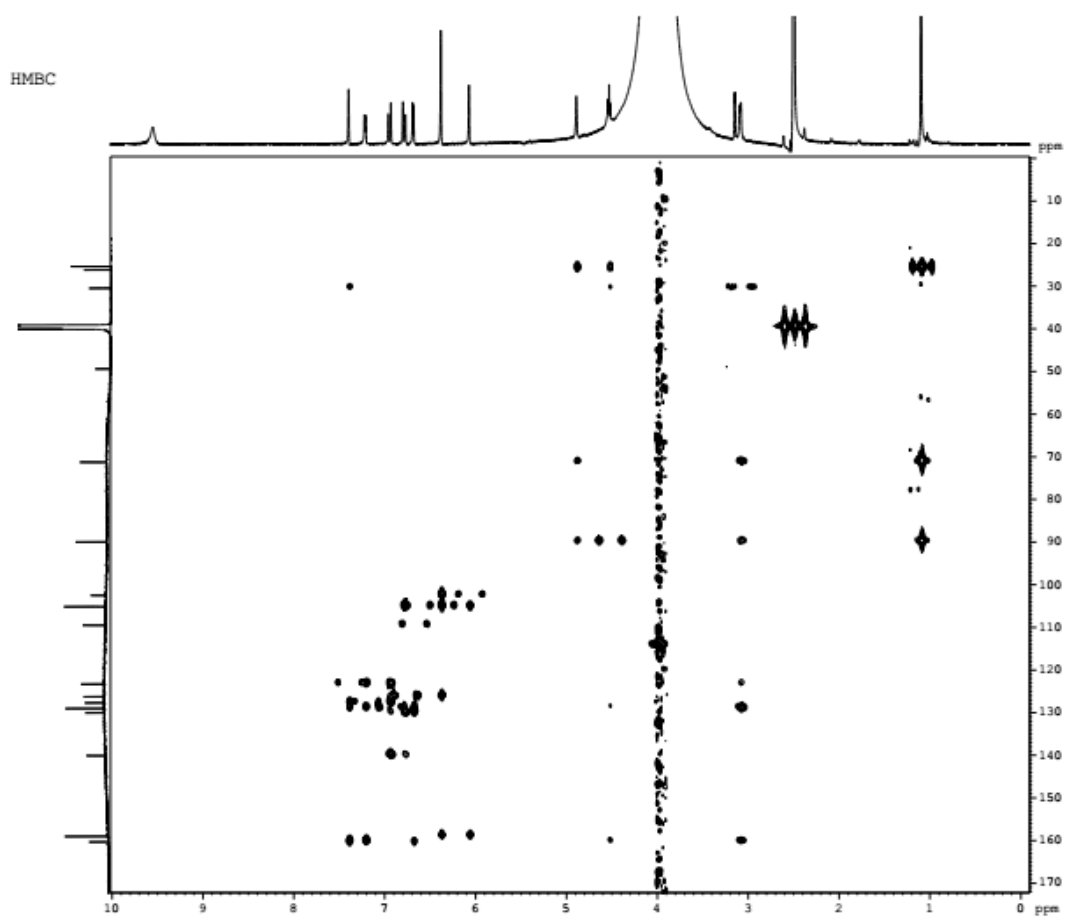


Figure S5. HMBC spectrum of 1 in DMSO-*d*₆.

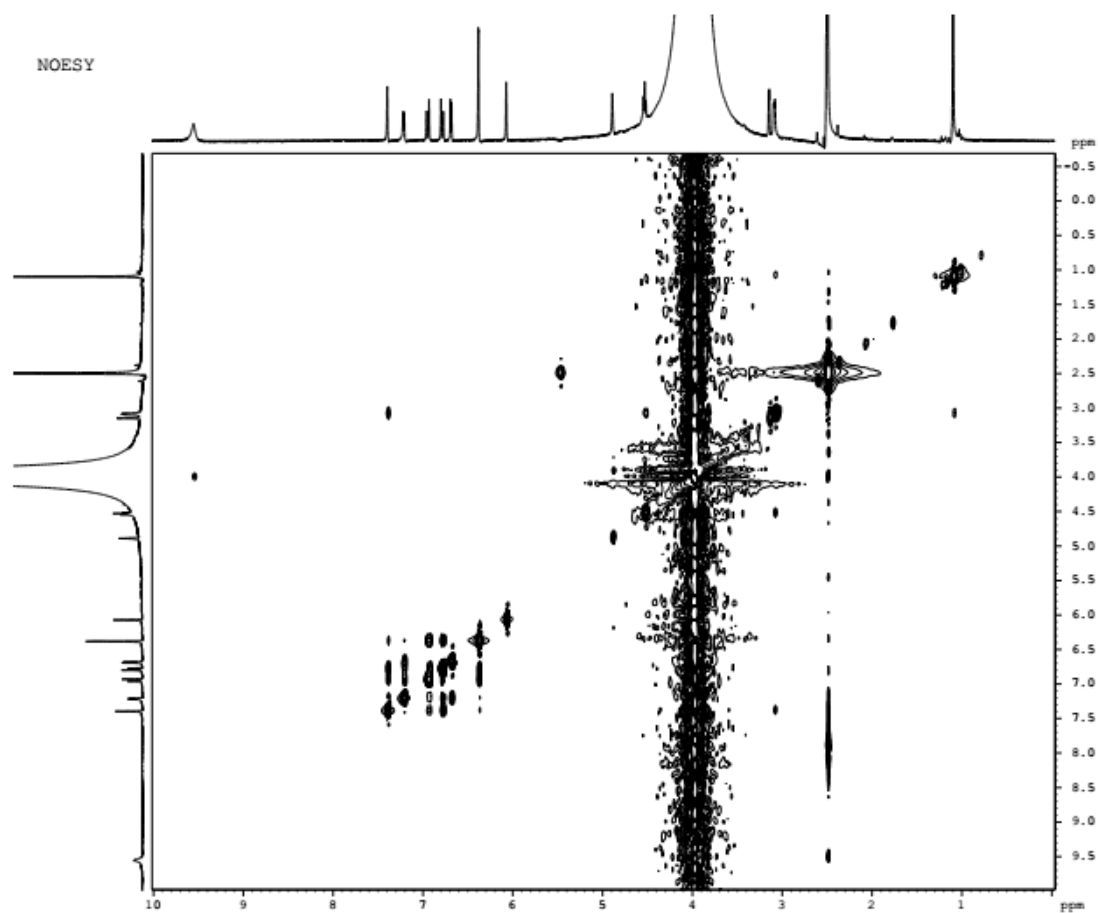


Figure S6. NOESY spectrum of 1 in DMSO-*d*₆.