

Supplementary Materials: Stereoselective Reduction of Imines with Trichlorosilane Using Solid-Supported Chiral Picolinamides

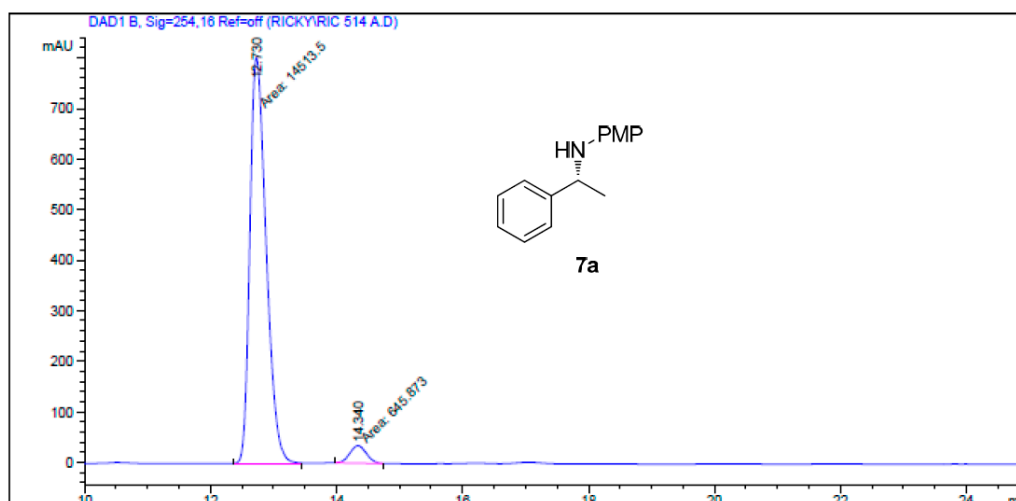
Sílvia D. Fernandes, Riccardo Porta, Pedro C. Barrulas, Alessandra Puglisi, Anthony J. Burke and Maurizio Benaglia

Set-up of continuous flow experiment



Figure S1. Set-up of continuous flow experiment;

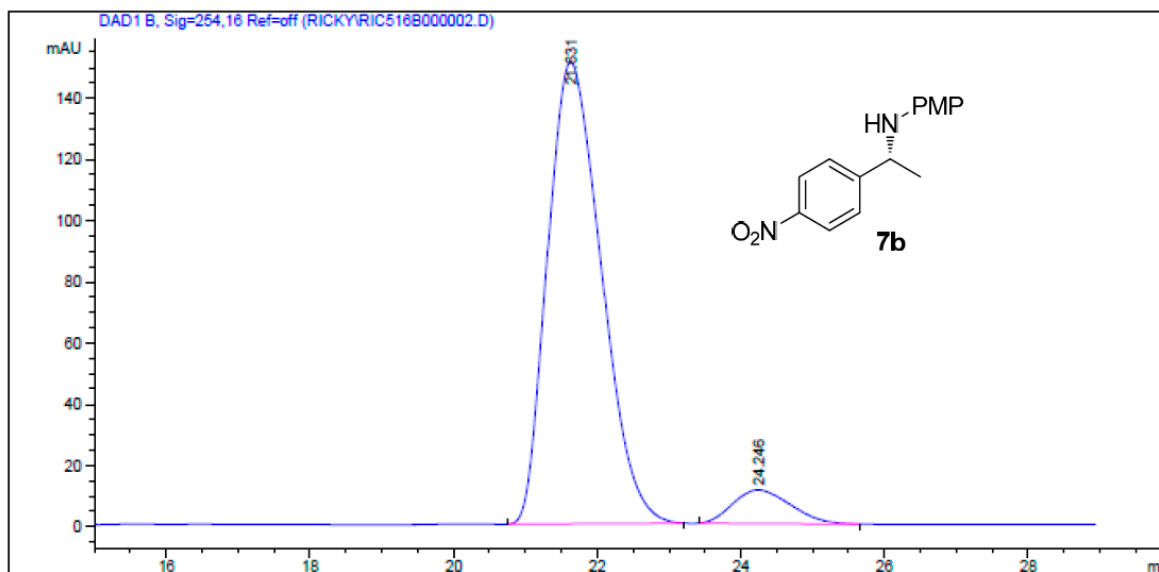
HPLC traces



Signal 1: DAD1 B, Sig=254,16 Ref=off

Peak #	RetTime [min]	Type	Width [min]	Area [mAU*s]	Height [mAU]	Area %
1	12.730	MM	0.3015	1.45135e4	802.19348	95.7394
2	14.340	MM	0.3101	645.87299	34.71146	4.2606

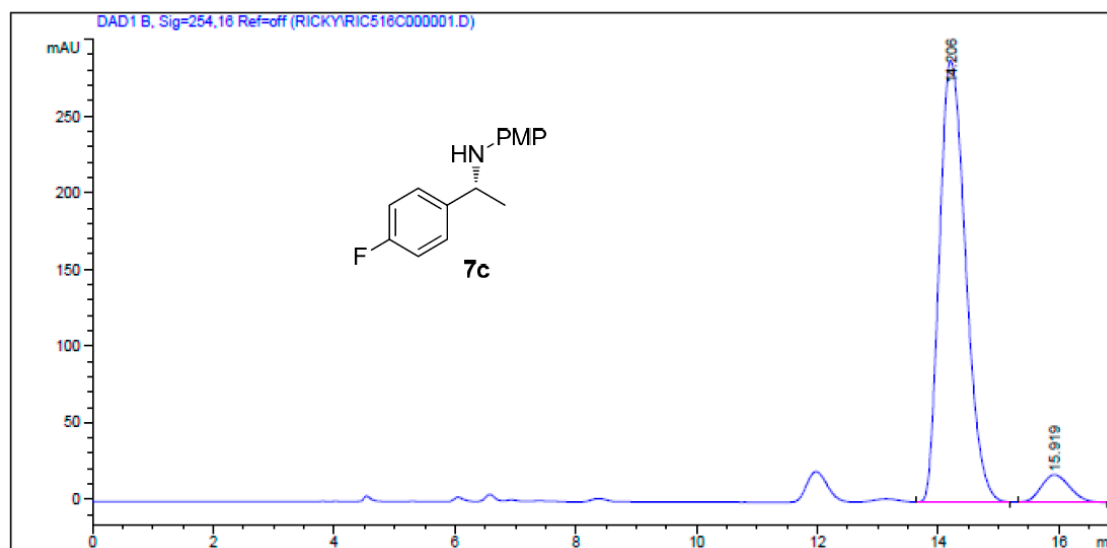
Totals : 1.51593e4 836.90495



Signal 1: DAD1 B, Sig=254,16 Ref=off

Peak #	RetTime [min]	Type	Width [min]	Area [mAU*s]	Height [mAU]	Area %
1	21.631	BB	0.8416	7839.49072	151.02728	92.6847
2	24.246	BB	0.7331	618.74463	11.01985	7.3153

Totals : 8458.23535 162.04713



Peak #	RetTime [min]	Type	Width [min]	Area [mAU*s]	Height [mAU]	Area %
1	14.206	VB	0.4700	8699.45215	288.31537	93.4443
2	15.919	BB	0.5228	610.31989	18.21909	6.5557

Totals : 9309.77203 306.53446

