

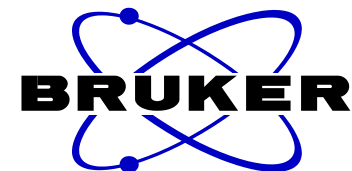
PK3 (Phy-a)

Current Data Parameters  
NAME PK03  
EXPNO 1  
PROCNO 1

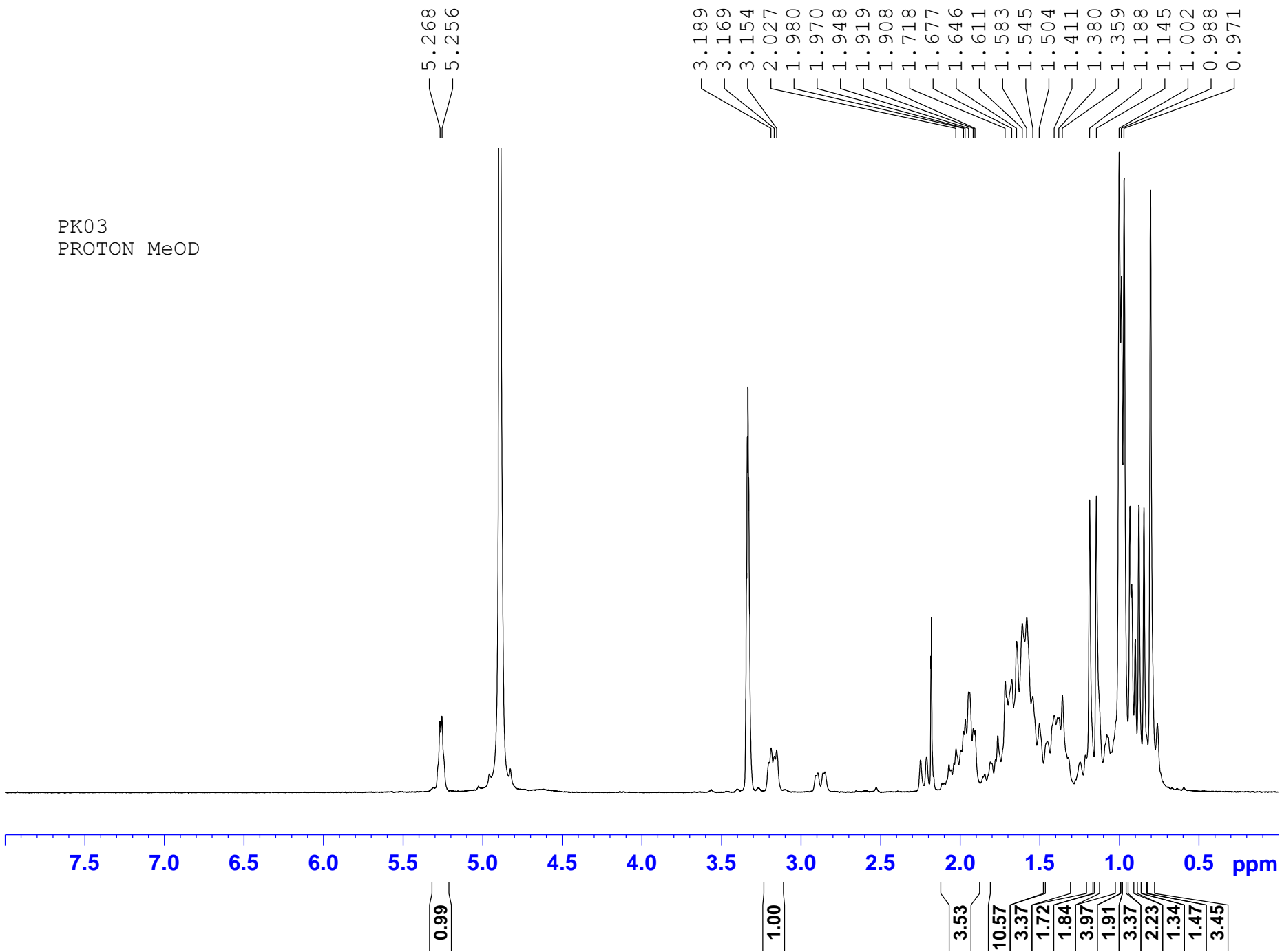
F2 - Acquisition Parameters  
Date\_ 20120905  
Time 11.08  
INSTRUM spect  
PROBHD 5 mm QNP 1H/15  
PULPROG zg30  
TD 65536  
SOLVENT MeOD  
NS 16  
DS 2  
SWH 6172.839 Hz  
FIDRES 0.094190 Hz  
AQ 5.3084660 sec  
RG 228.1  
DW 81.000 usec  
DE 6.00 usec  
TE 299.2 K  
D1 1.00000000 sec  
TDO 1

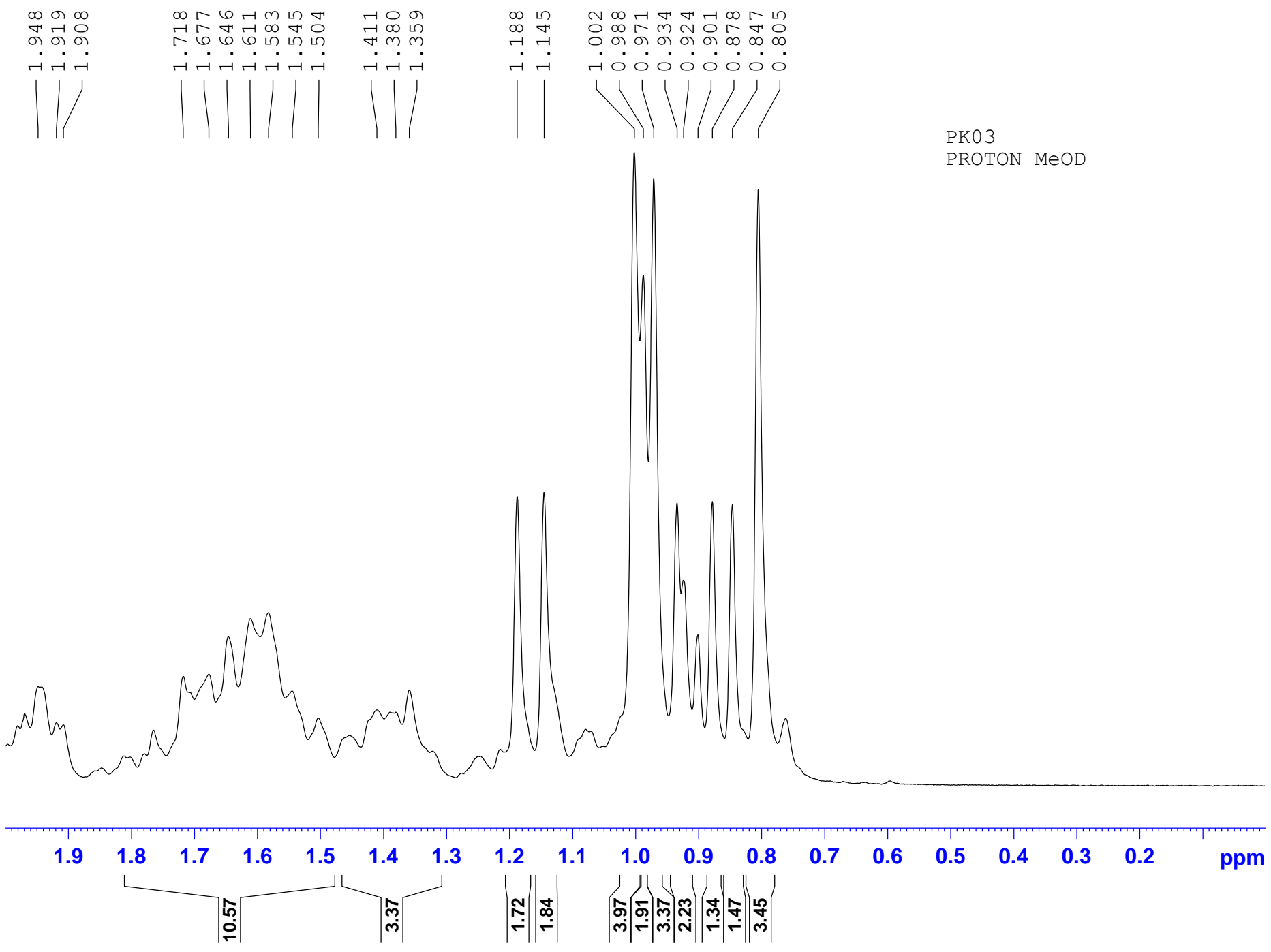
==== CHANNEL f1 =====  
NUC1 1H  
P1 10.00 usec  
PL1 0.00 dB  
SFO1 300.1318534 MHz

F2 - Processing parameters  
SI 32768  
SF 300.1300000 MHz  
WDW EM  
SSB 0  
LB 0.30 Hz  
GB 0  
PC 1.00



PK03  
PROTON MeOD





PK03  
C13CPD MeOD

Current Data Parameters

NAME PK03  
EXPNO 2  
PROCNO 1

F2 - Acquisition Parameters

Date\_ 20120907  
Time 3.07  
INSTRUM spect  
PROBHD 5 mm QNP 1H/15  
PULPROG zgpg30  
TD 65536  
SOLVENT MeOD  
NS 4096  
DS 4  
SWH 17985.611 Hz  
FIDRES 0.274439 Hz  
AQ 1.8219508 sec  
RG 14596.5  
DW 27.800 usec  
DE 6.00 usec  
TE 300.2 K  
D1 2.00000000 sec  
d11 0.03000000 sec  
DELTA 1.89999998 sec  
TDO 1

==== CHANNEL f1 =====

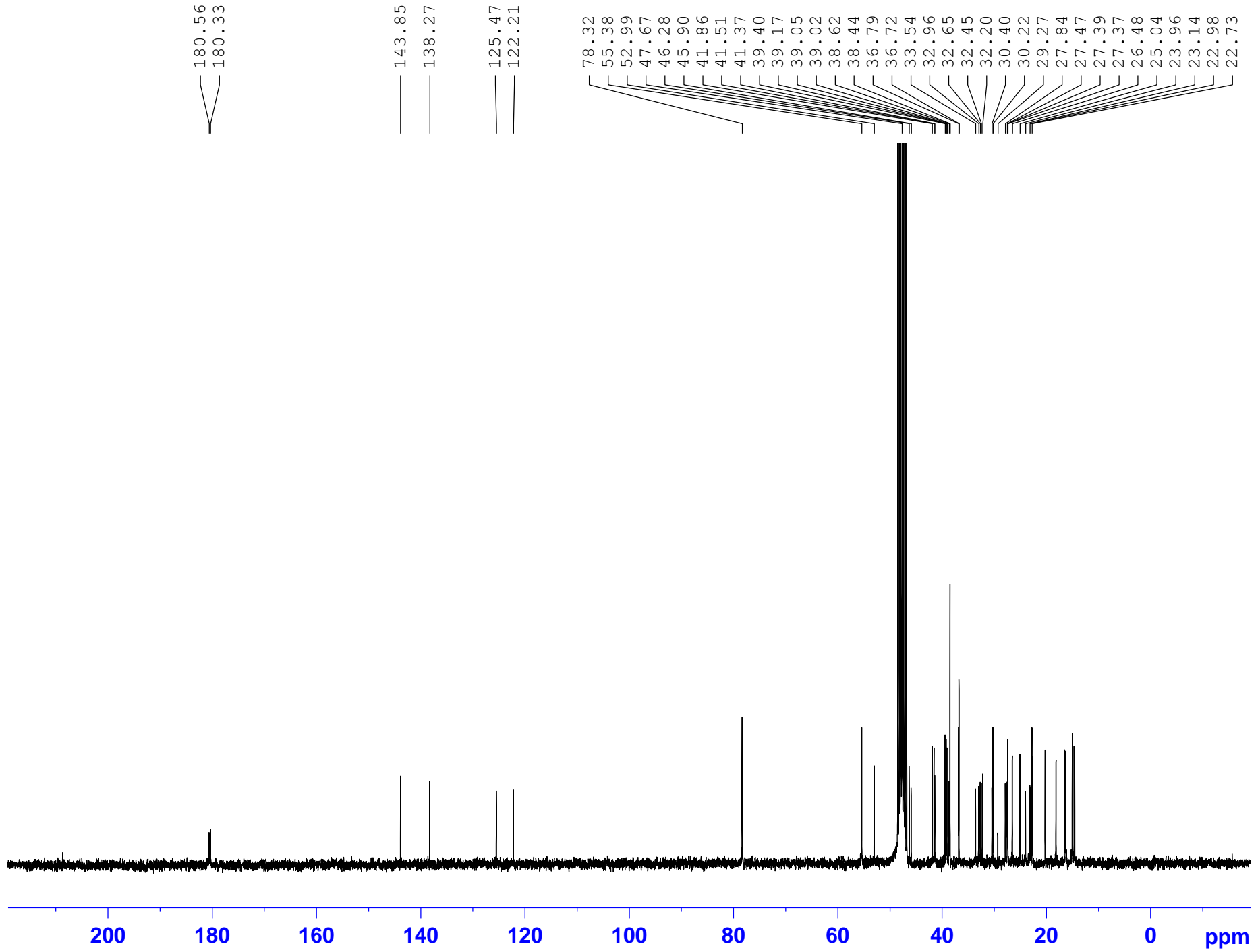
NUC1 13C  
P1 8.50 usec  
PL1 -2.00 dB  
SFO1 75.4752953 MHz

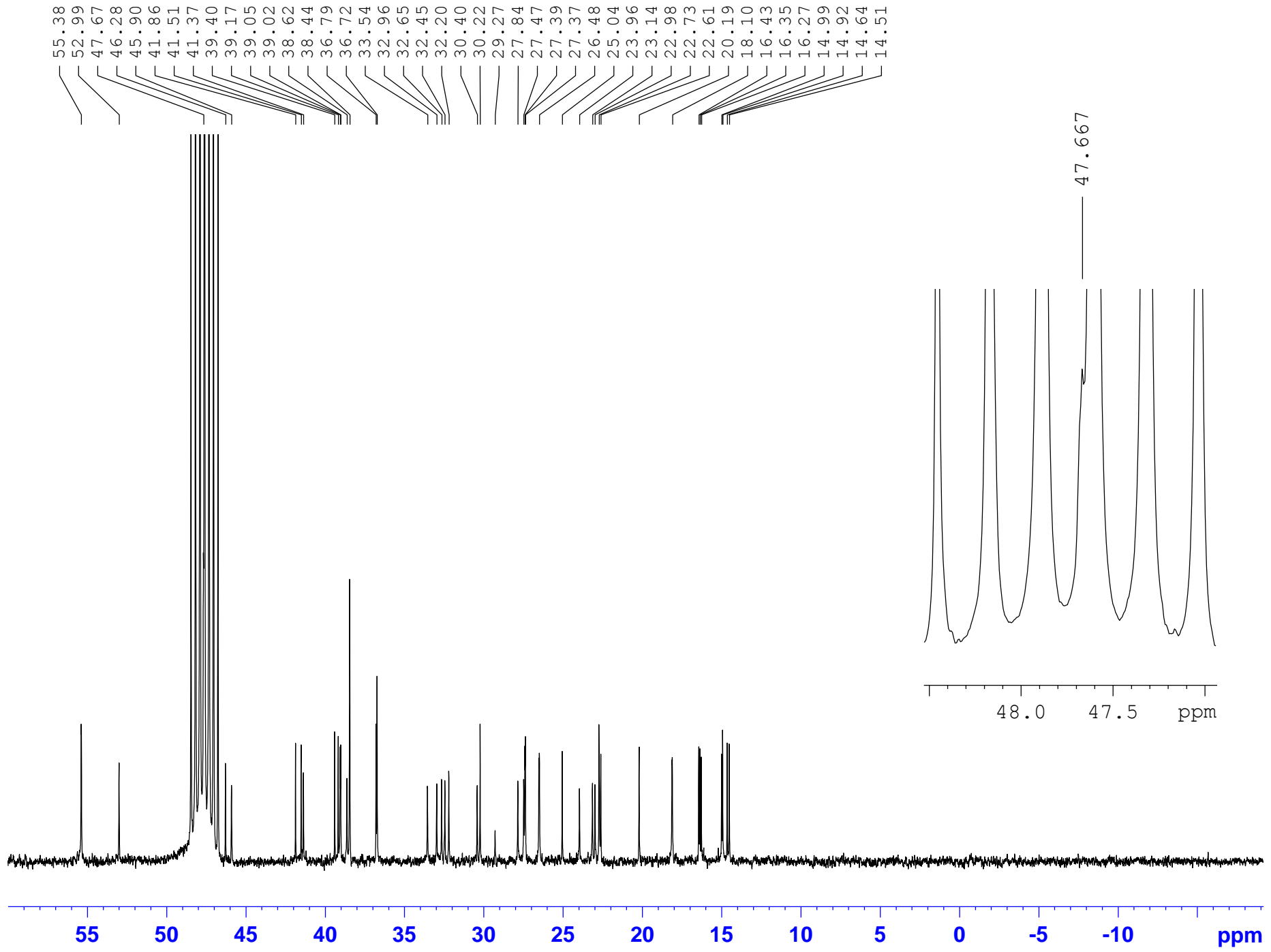
==== CHANNEL f2 =====

CPDPRG2 waltz16  
NUC2 1H  
PCPD2 80.00 usec  
PL2 0.00 dB  
PL12 18.06 dB  
PL13 18.00 dB  
SFO2 300.1312005 MHz

F2 - Processing parameters

SI 32768  
SF 75.4677490 MHz  
WDW EM  
SSB 0  
LB 1.00 Hz  
GB 0  
PC 1.40





PK03  
C13DEPT135 MeOD

Current Data Parameters  
NAME PK03  
EXPNO 3  
PROCNO 1

F2 - Acquisition Parameters

Date\_ 20120907  
Time\_ 4.14  
INSTRUM spect  
PROBHD 5 mm QNP 1H/15  
PULPROG dept135  
TD 65536  
SOLVENT MeOD  
NS 1024  
DS 4  
SWH 17985.611 Hz  
FIDRES 0.274439 Hz  
AQ 1.8219508 sec  
RG 16384  
DW 27.800 usec  
DE 6.00 usec  
TE 299.2 K  
CNST2 145.0000000  
D1 2.00000000 sec  
d2 0.00344828 sec  
d12 0.00002000 sec  
DELTA 0.00001082 sec  
TD0 1

==== CHANNEL f1 =====

NUC1 13C  
P1 8.50 usec  
p2 17.00 usec  
PL1 -2.00 dB  
SFO1 75.4752953 MHz

==== CHANNEL f2 =====

CPDPRG2 waltz16  
NUC2 1H  
P3 10.00 usec  
p4 20.00 usec  
PCPD2 80.00 usec  
PL2 0.00 dB  
PL12 18.06 dB  
SFO2 300.1312005 MHz

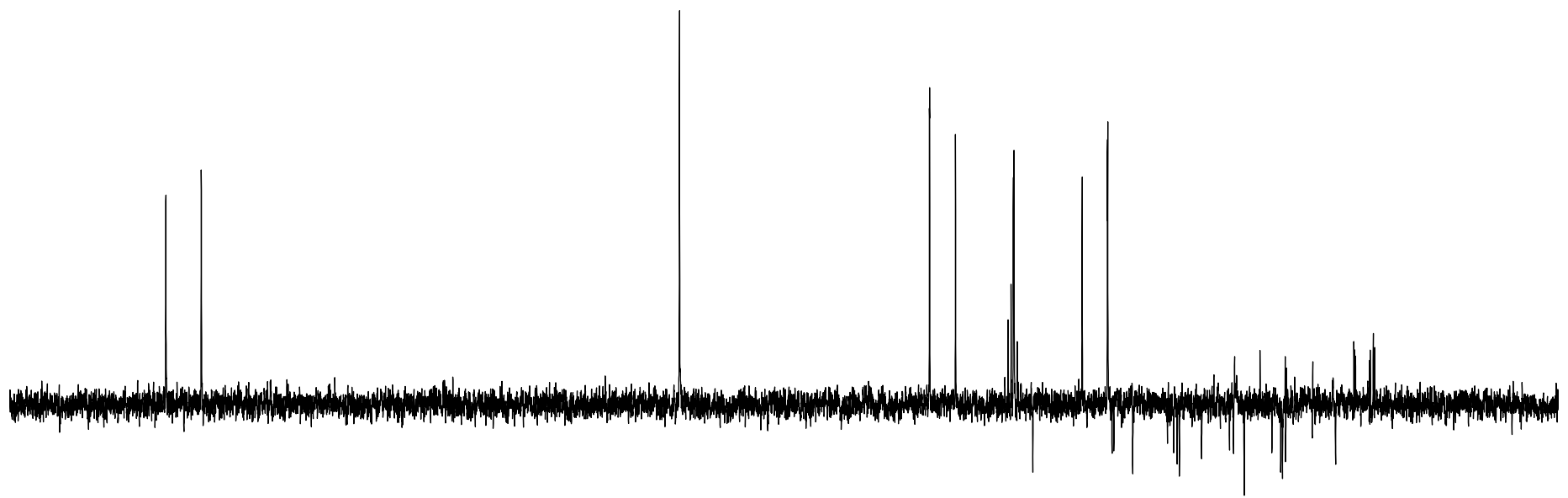
F2 - Processing parameters

SI 32768  
SF 75.4677490 MHz  
WDW EM  
SSB 0  
LB 1.00 Hz  
GB 0  
PC 1.40

125.46  
122.21

78.31

55.36  
52.99  
48.17  
47.89  
47.68  
47.62  
47.32  
45.89  
41.36  
39.04  
39.02  
38.62  
38.46  
36.72  
32.95  
32.64  
32.44  
30.40  
27.84  
27.47  
27.37  
26.47  
25.04  
23.95  
23.14  
22.97  
22.69  
20.20  
18.10  
16.43  
16.35  
16.28



130 120 110 100 90 80 70 60 50 40 30 20 10 ppm



PK03  
COSYGPSW MeOD

Current Data Parameters  
NAME PK03  
EXPNO 4  
PROCNO 1

F2 - Acquisition Parameters  
Date\_ 20120907  
Time\_ 4.18  
INSTRUM spect  
PROBHD 5 mm QNP 1H/15  
PULPROG cosygpqf  
TD 2048  
SOLVENT MeOD  
NS 6  
DS 8  
SWH 1698.370 Hz  
FIDRES 0.829282 Hz  
AQ 0.6029812 sec  
RG 64  
DW 294.400 usec  
DE 6.00 usec  
TE 299.2 K  
d0 0.00000300 sec  
D1 1.14037001 sec  
d13 0.00000400 sec  
D16 0.00020000 sec  
IN0 0.00058880 sec

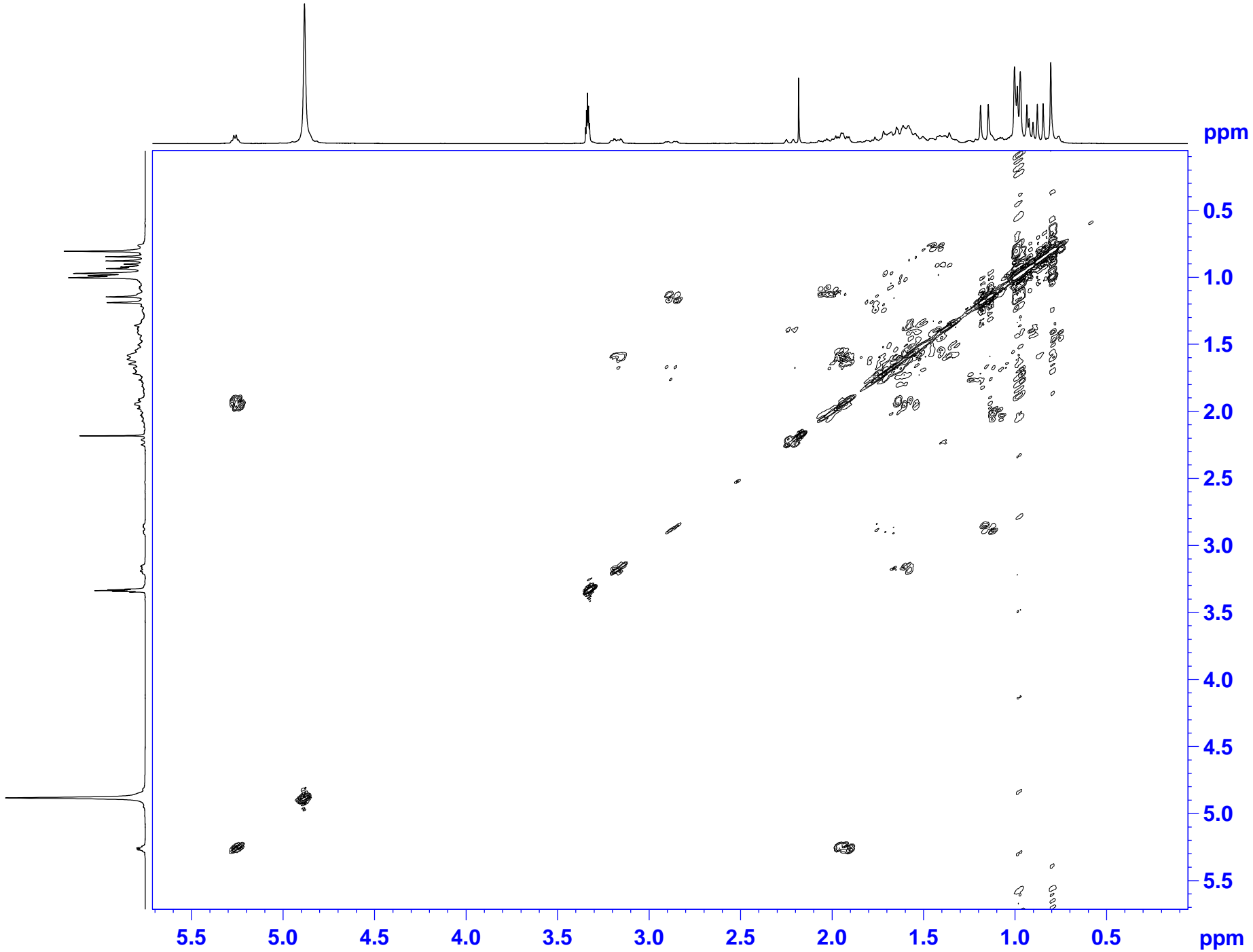
===== CHANNEL f1 =====  
NUC1 1H  
P0 10.00 usec  
P1 10.00 usec  
PL1 0.00 dB  
SFO1 300.1308656 MHz

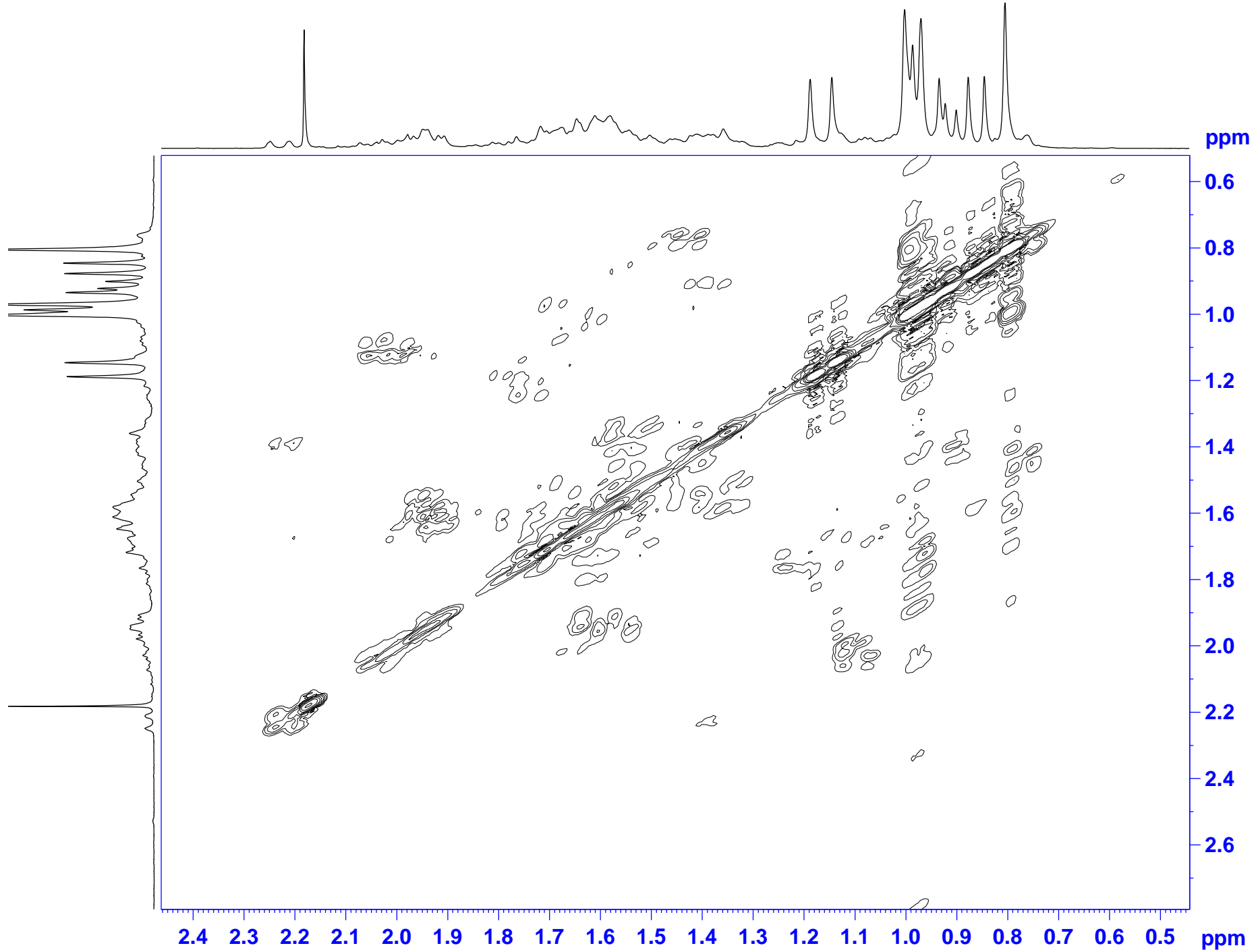
===== GRADIENT CHANNEL =====  
GPNAM1 SINE.100  
GPNAM2 SINE.100  
GPZ1 10.00 %  
GPZ2 10.00 %  
P16 1000.00 usec

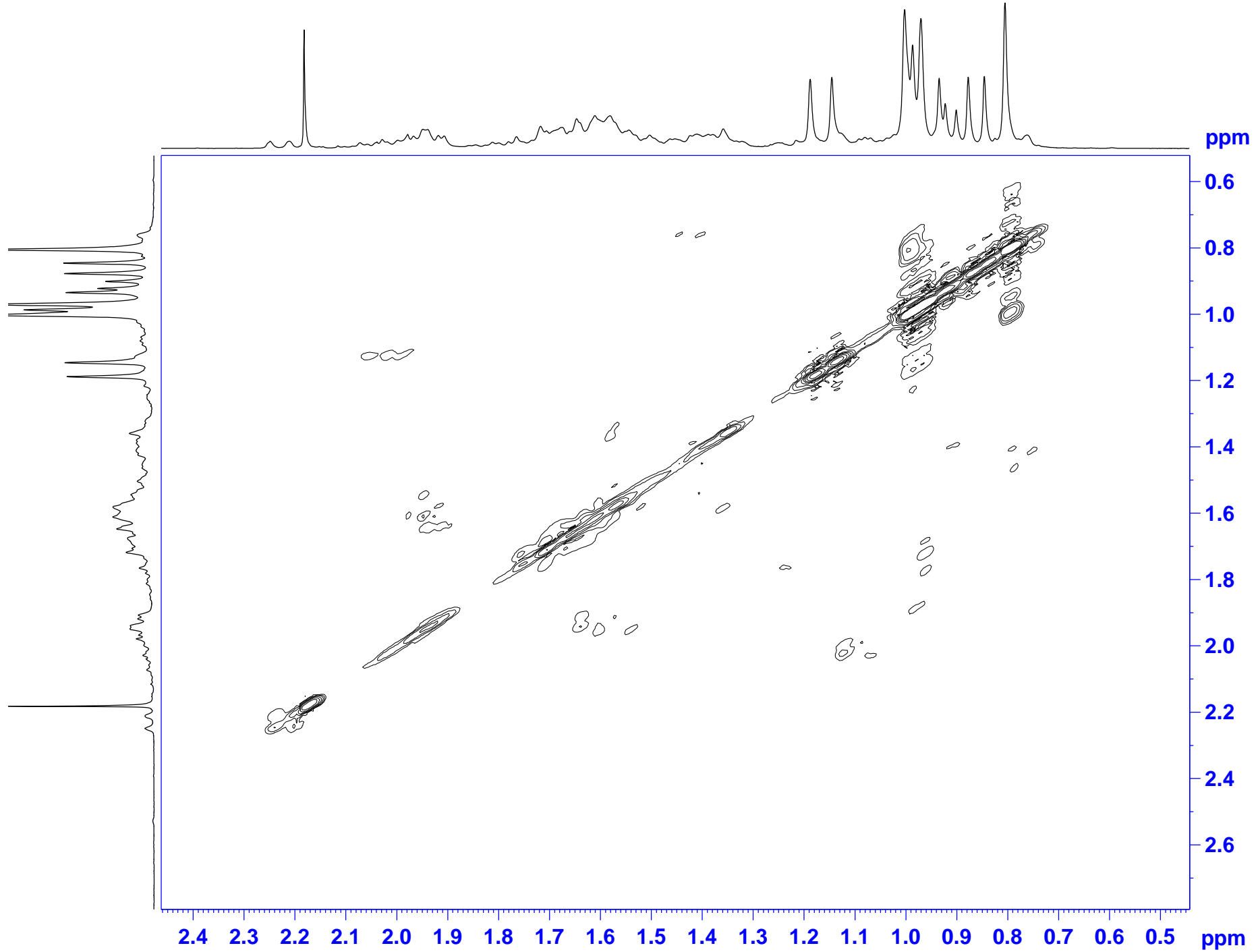
F1 - Acquisition parameters  
ND0 1  
TD 256  
SFO1 300.1309 MHz  
FIDRES 6.634256 Hz  
SW 5.659 ppm  
FnMODE QF

F2 - Processing parameters  
SI 1024  
SF 300.1300000 MHz  
WDW SINE  
SSB 0  
LB 0.00 Hz  
GB 0  
PC 1.40

F1 - Processing parameters  
SI 1024  
MC2 QF  
SF 300.1300000 MHz  
WDW SINE  
SSB 0  
LB 0.00 Hz  
GB 0







PK03  
HMQCGP MeOD

```
Current Data Parameters
NAME          PK03
EXPNO         5
PROCNO        1

F2 - Acquisition Parameters
Date_         20120907
Time          5.06
INSTRUM       spect
PROBHD        5 mm QNP 1H/15
PULPROG       hmqcggpgf
TD            1024
SOLVENT       MeOD
NS            24
DS            16
SWH           1698.370 Hz
FIDRES        1.658564 Hz
AQ            0.3015156 sec
RG            26008
DW            294.400 usec
DE            6.00 usec
TE            299.2 K
CMST2         145.0000000
d0            0.00000300 sec
d1            1.36728895 sec
d2            0.00344828 sec
d12           0.00002000 sec
d13           0.00000400 sec
d16           0.00020000 sec
DELTA1        0.0022428 sec
IN0           0.00004000 sec

===== CHANNEL f1 =====
NUC1           1H
P1             10.00 usec
p2            20.00 usec
PL1            0.00 dB
SFO1           300.1308656 MHz

===== CHANNEL f2 =====
CPDPRG2        garp
NUC2           13C
P3             8.50 usec
PCPD2          80.00 usec
PL2            -2.00 dB
PL12           17.47 dB
SFO2           75.4734083 MHz

===== GRADIENT CHANNEL =====
GPNAM1         SINE.100
GPNAM2         SINE.100
GPNAM3         SINE.100
GPZ1           50.00 %
GPZ2           30.00 %
GPZ3           40.10 %
P16            1000.00 usec

F1 - Acquisition parameters
ND0            2
TD             206
SFO1           75.47341 MHz
FIDRES         60.679611 Hz
SW             165.621 ppm
FnMODE         QF

F2 - Processing parameters
SI             1024
SF             300.1300000 MHz
WDW            QSINE
SSB            2
LB             0.00 Hz
GB             0
PC             1.40

F1 - Processing parameters
SI             1024
MC2            QF
SF             75.4677490 MHz
WDW            QSINE
SSB            2
LB             0.00 Hz
GB             0
```

