

Supplementary Material

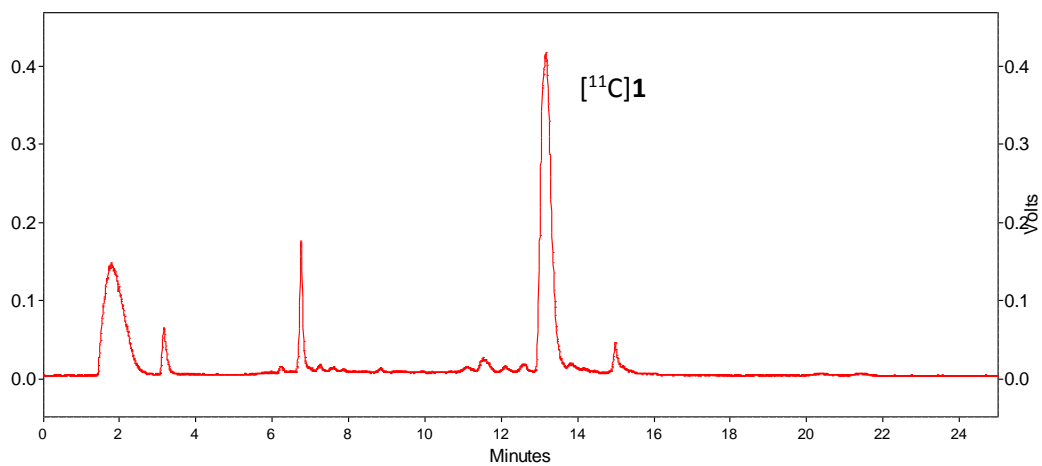
¹¹C-Labeling of aryl ketones as candidate histamine subtype-3 receptor PET radioligands through Pd(0)-mediated ¹¹C-carbonylative coupling

Fabrice G. Siméon, William J. Culligan, Shuiyu Lu and Victor W. Pike*

Molecular Imaging Branch, National Institute of Mental Health, National Institutes of Health, Bethesda, Maryland, 20892-1003, USA

Figure S1. An example of Semi-prep (A) and QC (B) radio-HPLC chromatograms for [¹¹C]**1**
Figure S2. An example of Semi-prep (A) and QC (B) radio-HPLC chromatograms for [¹¹C]**2**
Figure S3. An example of Semi-prep (A) and QC (B) radio-HPLC chromatograms for [¹¹C]**3**
Figure S4. An example of Semi-prep (A) and QC (B) radio-HPLC chromatograms for [¹¹C]**4**

(A) [^{11}C]1 semi-prep HPLC



(B) [^{11}C]1 QC HPLC

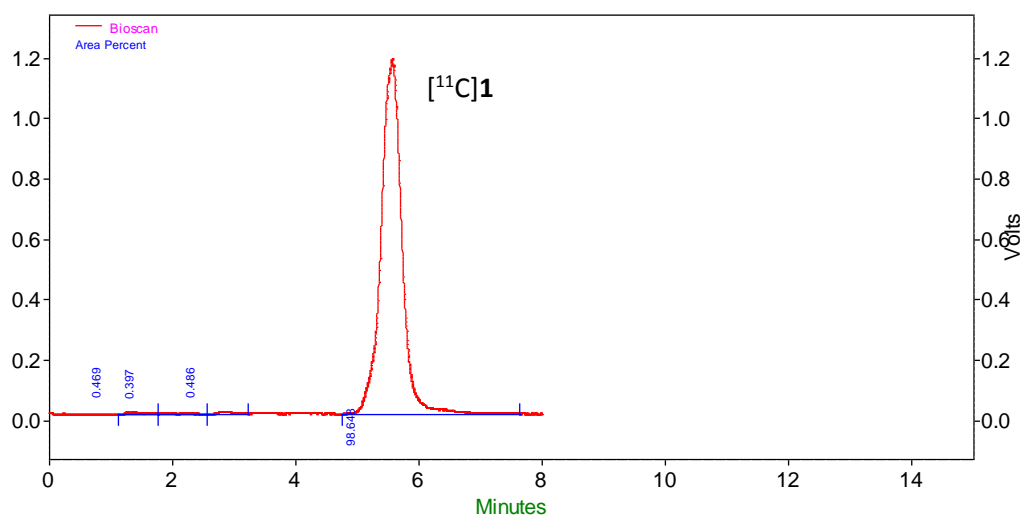
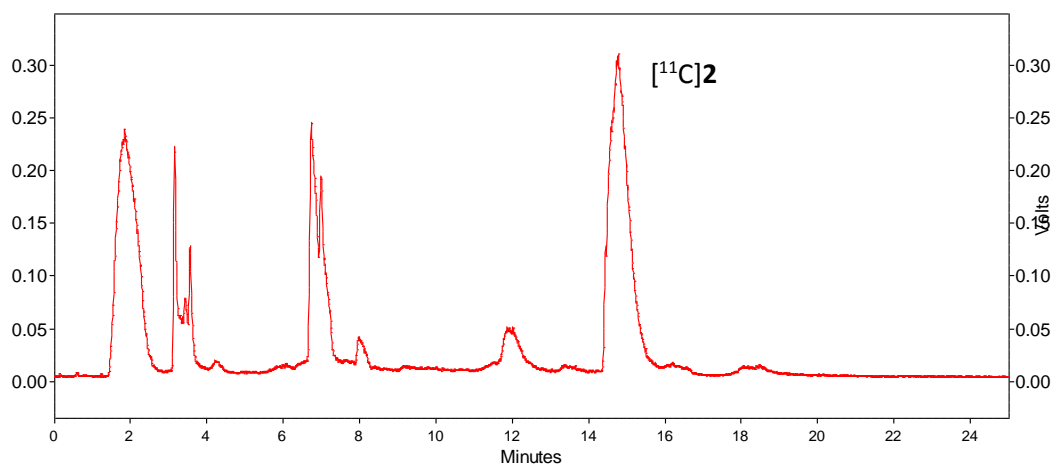


Figure S1. An example of Semi-prep (A) and QC (B) radio-HPLC chromatograms for [^{11}C]1.

(A) [^{11}C]2 semi-prep HPLC



(B) [^{11}C]2 QC HPLC

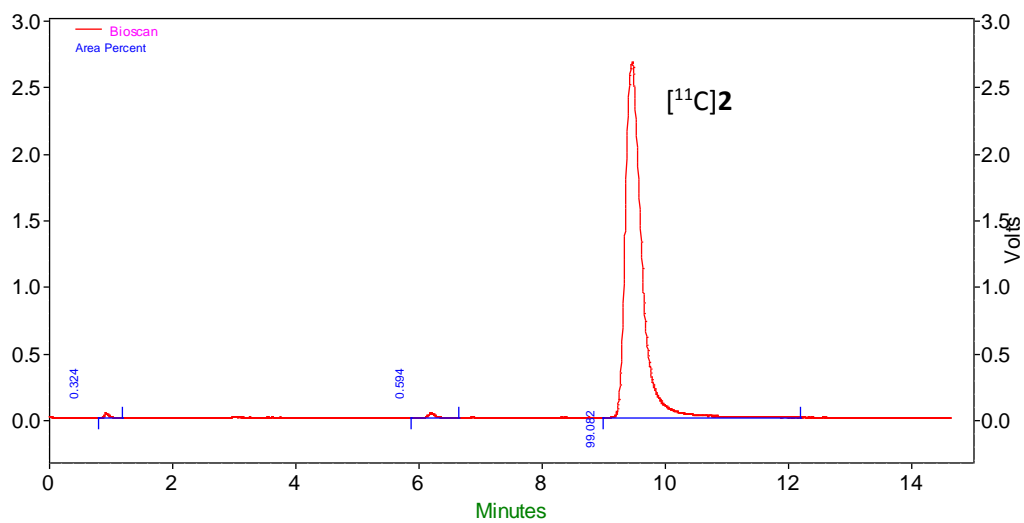
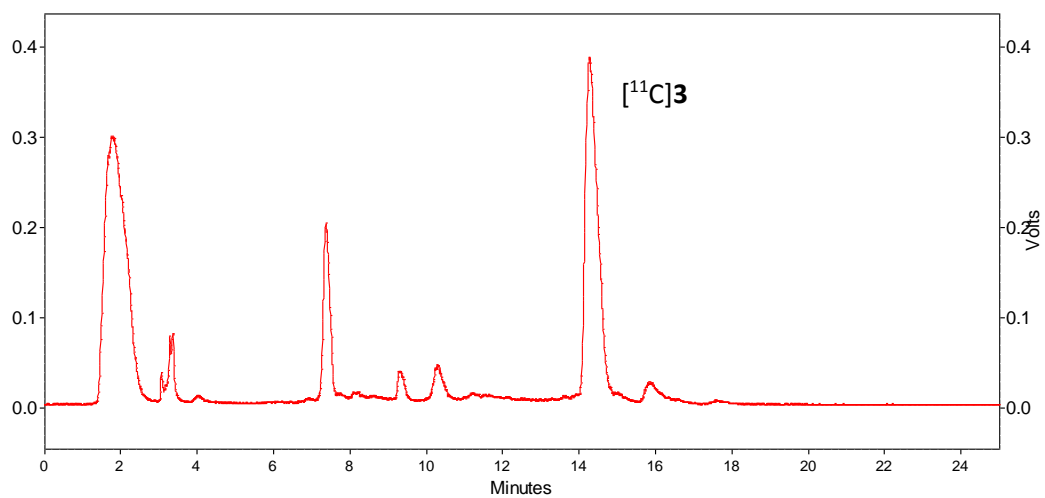


Figure S2. An example of Semi-prep (A) and QC (B) radio-HPLC chromatograms for [^{11}C]2.

(A) [^{11}C]3 semi-prep HPLC



(B) [^{11}C]3 QC HPLC

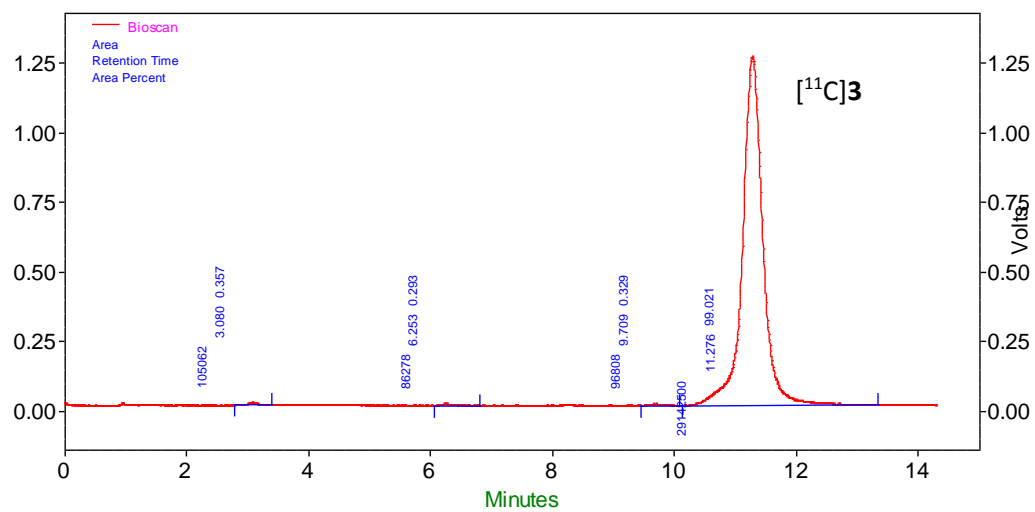
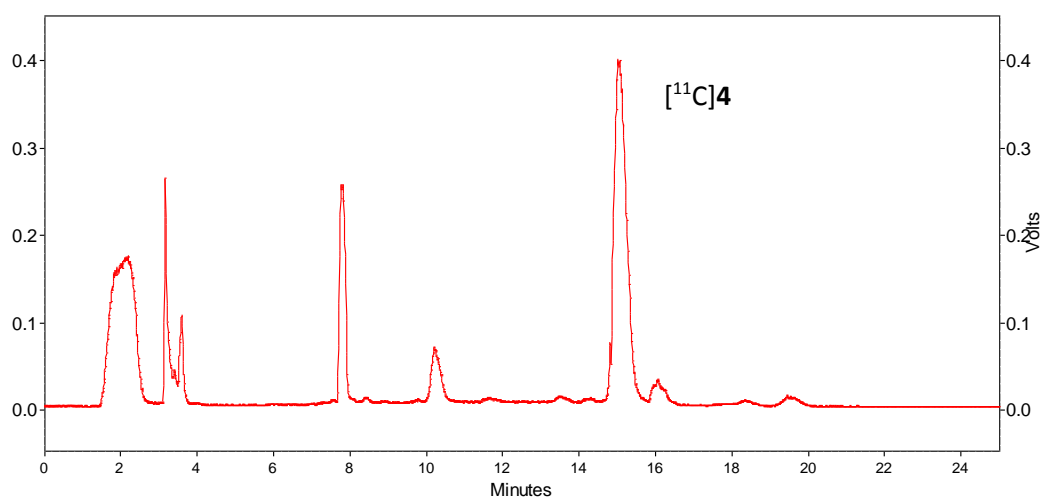


Figure S3. An example of Semi-prep (A) and QC (B) radio-HPLC chromatograms for [^{11}C]3.

(A) [^{11}C]4 semi-prep HPLC



(B) [^{11}C]4 QC HPLC

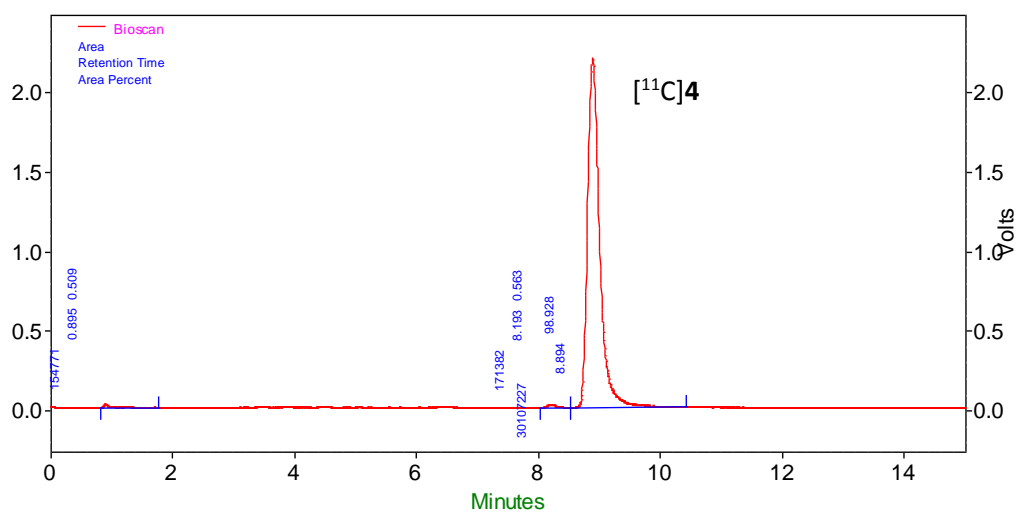


Figure S4. An example of Semi-prep (A) and QC (B) radio-HPLC chromatograms for [^{11}C]4.