

Supplementary Materials for

Immobilization of *Staphylococcus aureus* Sortase A on Chitosan Particles and Its Application in Peptides Cyclization

Min Yang, Haofei Hong, Shaozhong Liu, Xinrui Zhao, Zhimeng Wu*

Key Laboratory of Carbohydrate Chemistry & Biotechnology, Ministry of Education, School of Biotechnology, Jiangnan University, Wuxi, 214122, China; 18262281871@163.com (M.Y.);

hhf_1992@163.com (H.H.); liushaozhong90@163.com (S.L.); zhaoxinruibs0511@163.com (X.Z.)

* Correspondence: zww@jiangnan.edu.cn; Tel.: +86-510-85197582

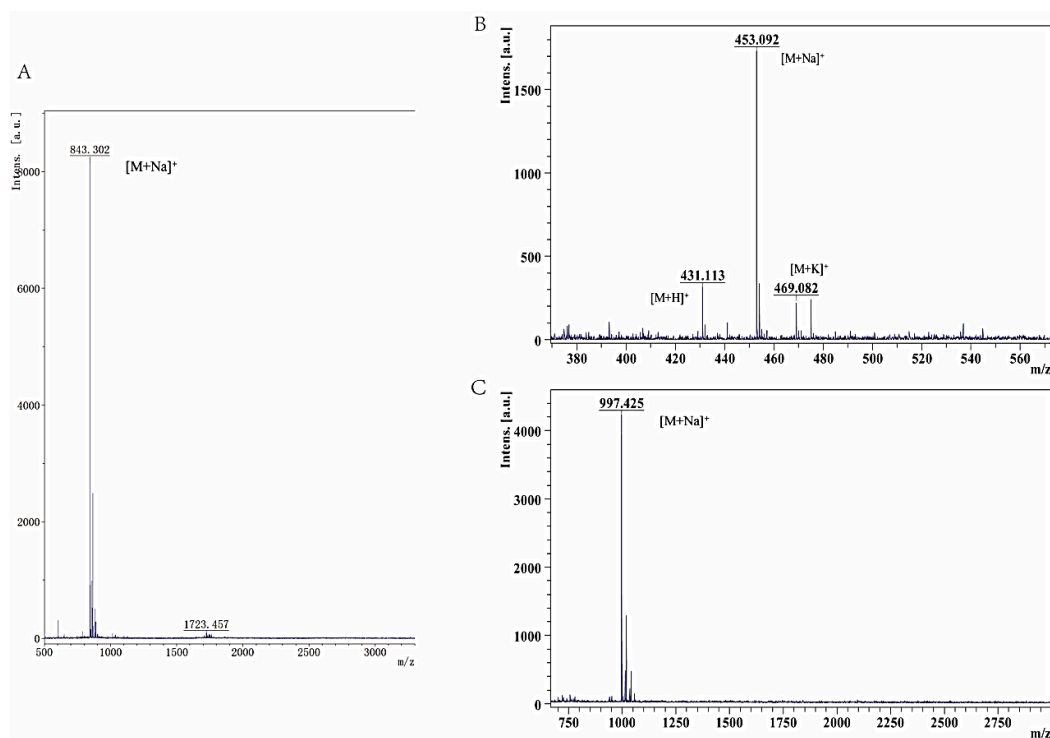


Fig.S1. (A) MALDI-TOF mass spectrum of peptide 1, calcd for 820.86, observed 843.3. [M+Na]⁺ (B) MALDI-TOF mass spectrum of peptide 2, calcd for 430.46, observed 431.111 [M+Na]⁺, 453.093 [M+Na]⁺, 469.066 [M+K]⁺. (C) MALDI-TOF mass spectrum of peptide 3, calcd for 975.07, observed 997.425 [M+Na]⁺.

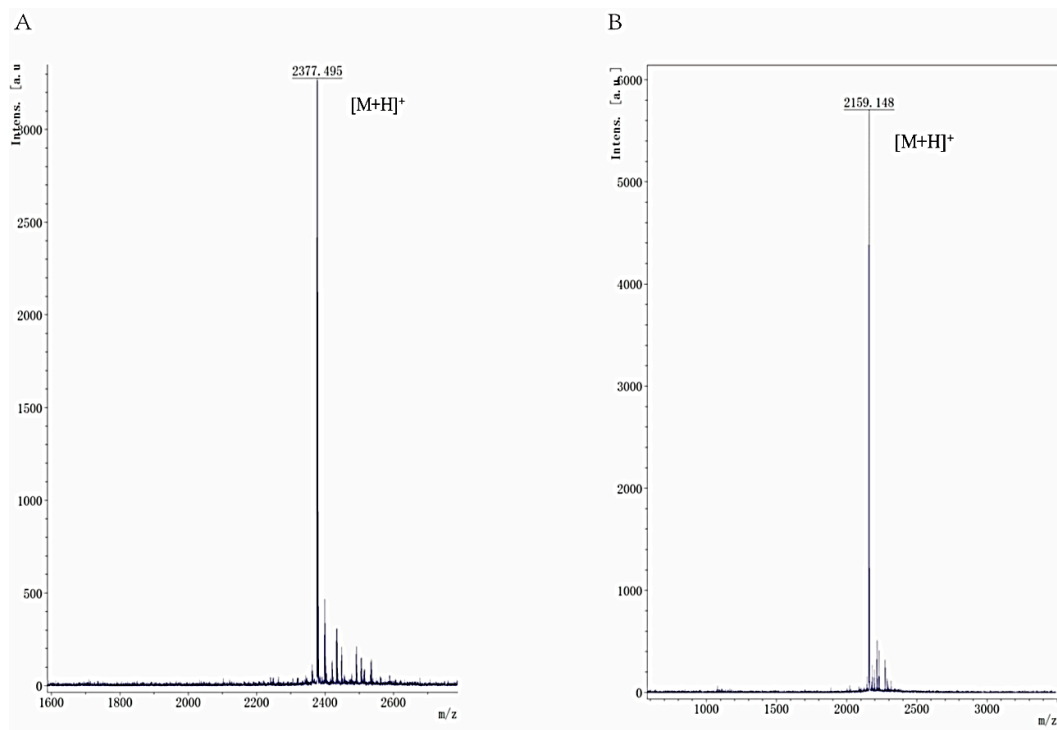


Fig.S2. MALDI-TOF MS of (A) Peptide 4, calcd for 2376.6, observed 2377.5 [M +H]⁺. (B) Peptide 5, calcd for 2158.4, observed 2359.1 [M + H]⁺.