

Supplementary

Table S1 Effect of various extracts from roots of *S. officinalis* L. on the bacterial growth determined by paper disc diffusion assay.

Extract/ Fraction ^a	<i>E. coli</i>	<i>V. parahaemolyticus</i>	<i>L. monocytogenes</i>	<i>S. aureus</i>	<i>P. acnes</i>
	Inhibition zone / 5 mg treatment				
CWE	- ^b	-	-	-	+
HWE	-	-	-	-	+
ME	+	+	+	+	+

^a CWE: cold water extract; HWE: hot water extract; ME: methanol extract. ^b No inhibition (-) and Inhibition (+). ^c *Escherichia coli*, *Vibrio parahaemolyticus*, *Listeria monocytogenes*, *Staphylococcus aureus*, *Propionibacterium acnes*.

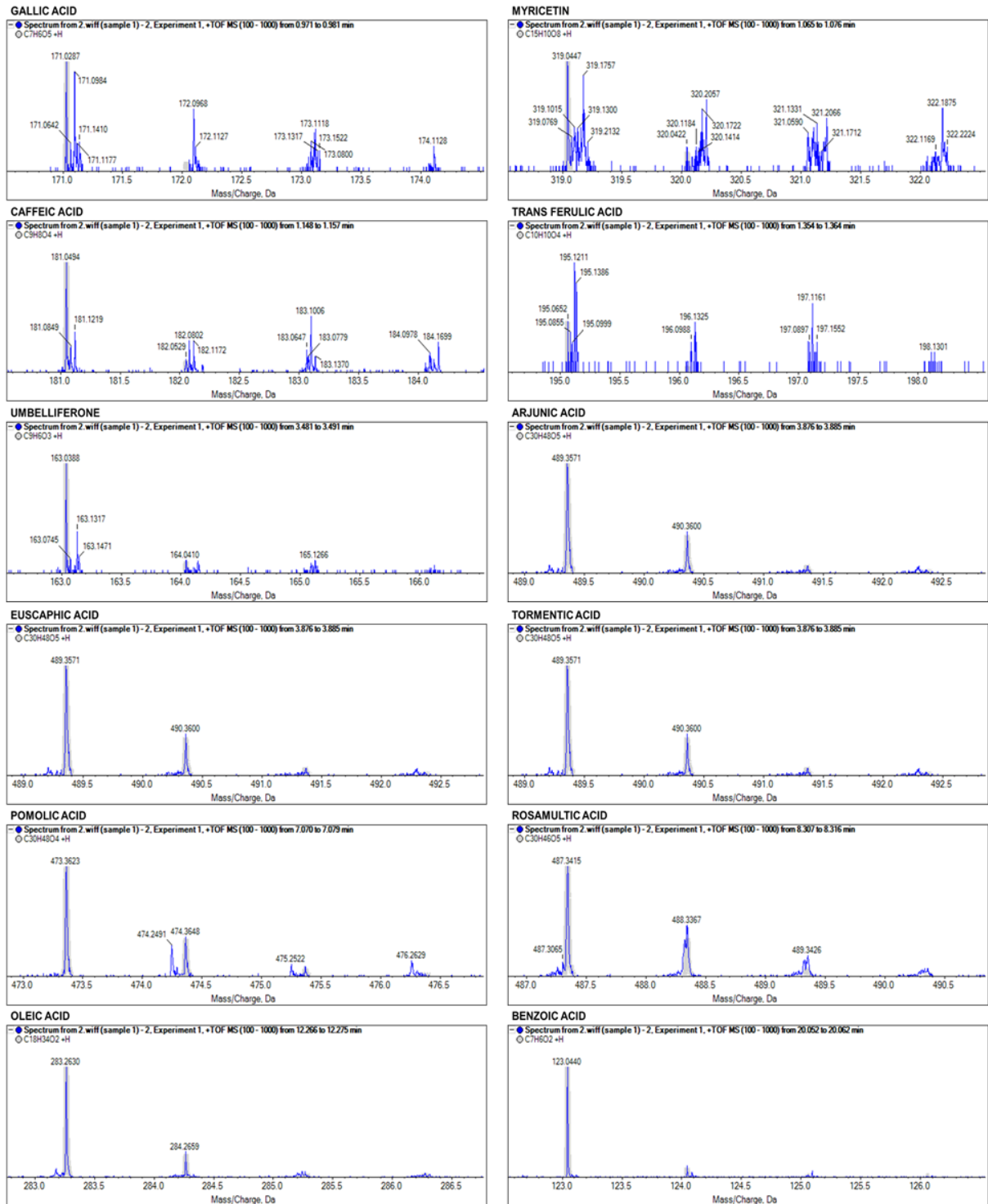
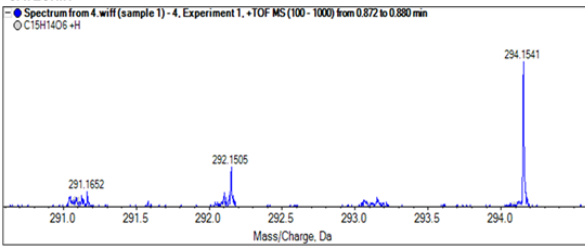
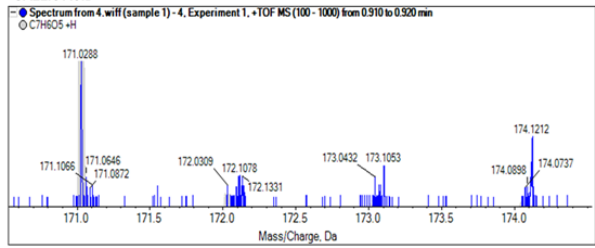
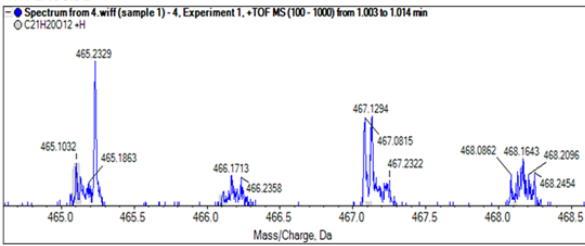
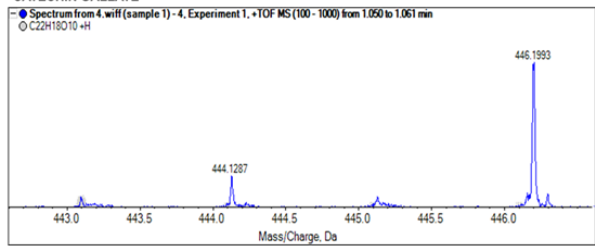
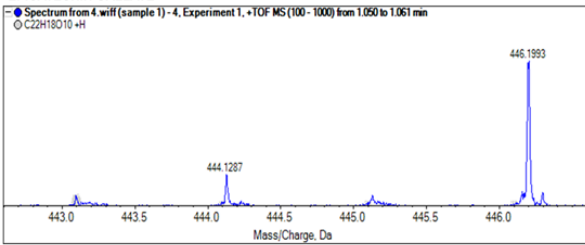
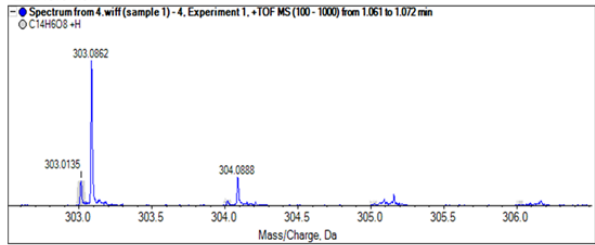
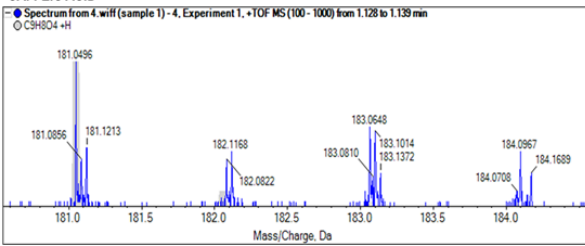
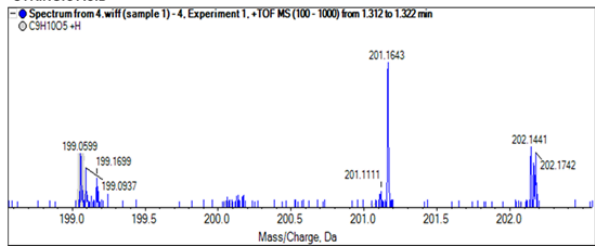


Figure S1 UHPLC-QTOF-MS spectra of major compounds in SOR CWE-EA.

CATECHIN**GALLIC ACID****HYPEROSIDE****CATECHIN GALLATE****EPICATECHIN GALLATE****ELLAGIC ACID****CAFFEIC ACID****SYRINGIC ACID**

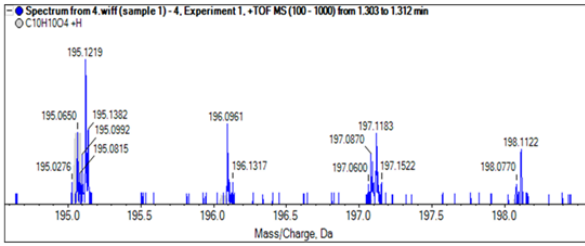
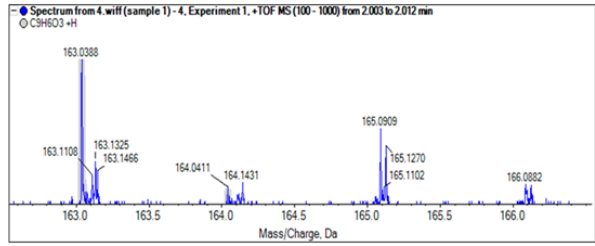
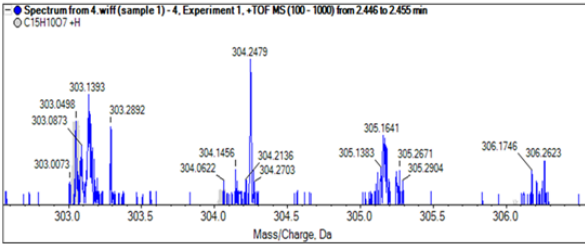
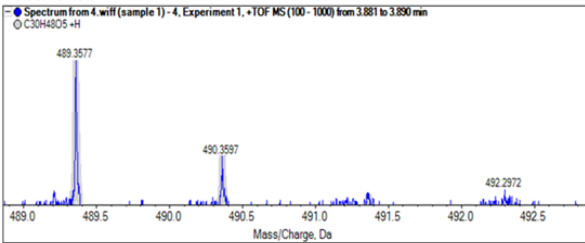
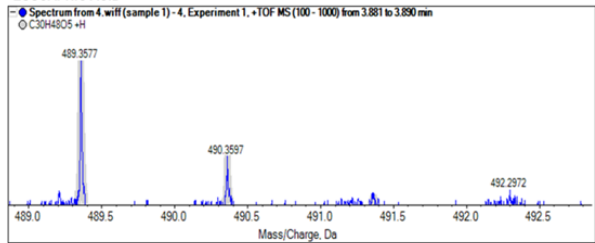
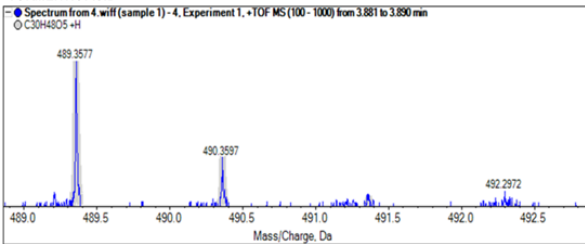
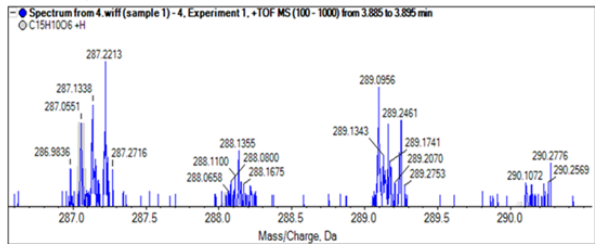
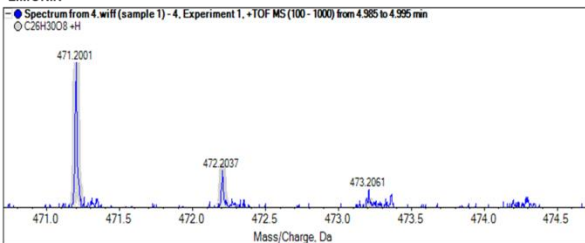
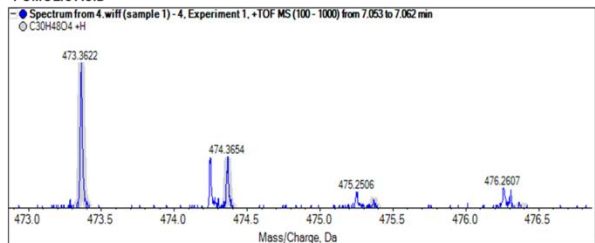
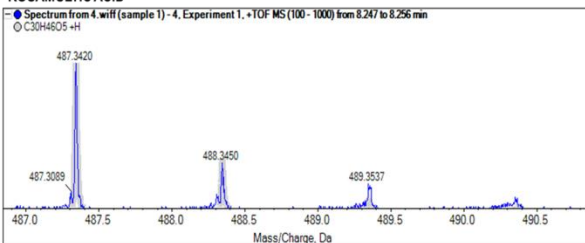
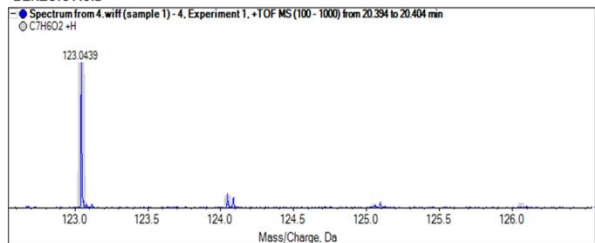
TRANS FERULIC ACID**UMBELLIFERONE****QUERCETIN****ARJUNIC ACID****EUSCAPHIC ACID****TORMENTIC ACID****KAEMPFEROL****LIMONIN****POMOLIC ACID****ROSAMULTIC ACID****BENZOIC ACID**

Figure S2 UHPLC-QTOF-MS spectra of major compounds in SOR HWE-EA.