

1 Supplementary

2 **Resveratrol Induced WAT Browning in Obese Mice**  
 3 **by Remodeling Fecal Microbiota**

4 Weiyao Liao <sup>1,2,†</sup>, Xiaohan Yin <sup>1,2,†</sup>, Qingrong Li <sup>1,2</sup>, Hongmin Zhang <sup>1,2</sup>, Zihui Liu <sup>1,2</sup>,  
 5 Xinjie Zheng <sup>1,2</sup>, Lin Zheng <sup>1,2</sup> and Xiang Feng <sup>1,2,\*</sup>

6 <sup>1</sup> Department of Nutrition, School of Public Health, Sun Yat-sen University; Guangzhou 510080, China;  
 7 liaow6@mail2.sysu.edu.cn (W.L.); yinxh5@mail2.sysu.edu.cn (X.Y.); liqr9@mail2.sysu.edu.cn (Q.L.);  
 8 zhanghm7@mail2.sysu.edu.cn (H.Z.); liuzihui@mail2.sysu.edu.cn (Z.L.);  
 9 zhengxj27@mail2.sysu.edu.cn (X.Z.); zhenglin@mail.sysu.edu.cn (L.Z.); fengx@mail.sysu.edu.cn (X.F.)

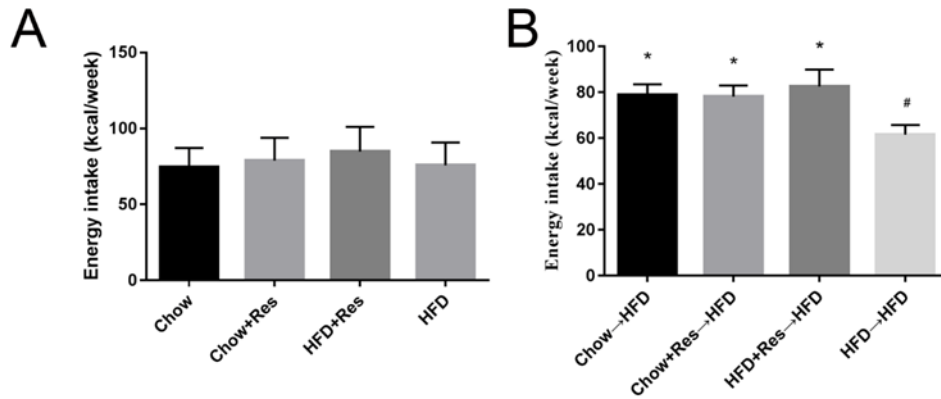
10 <sup>2</sup> Guangdong Provincial Key Laboratory of Food, Nutrition and Health, Guangzhou 510080, China

11 \* Correspondence: fengx@mail.sysu.edu.cn; Tel: +86-20-87332571

12 † Both authors contributed equally to this work.

13 Academic Editor: Min-Hsiung Pan; Filomena Conforti

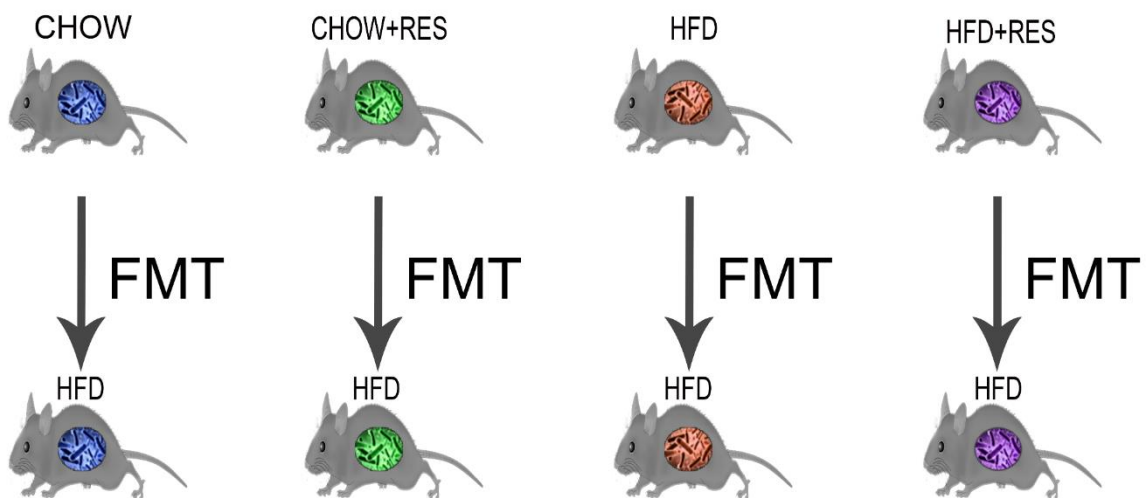
14 Received: 22 November 2018; Accepted: 16 December 2018; Published: date



15

16

**Figure S1.** Fecal microbial transplants from donor to recipient mice.



17

18 **Figure S2.** Energy intake by donor and recipient groups. Energy intake in donor groups (a) and recipient  
 19 groups (b) was monitored ( $n =$  eight or seven for each group). Energy intake was determined based on  
 20 caloric intake from consumed food. \* $p < 0.05$  compared with HFD-CT or HFD-HFD.