

Supplementary material for

## Tricycloalternarene analogs from a symbiotic fungus *Aspergillus* sp. D and their antimicrobial and cytotoxic effects

Huawei Zhang, Ziping Zhao, Jianwei Chen, Xuelian Bai and Hong Wang \*

### Table of Contents

Figure S1	<sup>1</sup> H NMR spectrum of <b>1</b>	S2
Figure S2	<sup>13</sup> C NMR spectrum of <b>1</b>	S3
Figure S3	HR-ESI-MS spectrum of <b>1</b>	S4
Figure S4	HSQC spectrum of <b>1</b>	S5
Figure S5	HMBC spectrum of <b>1</b>	S6
Figure S6	<sup>1</sup> H- <sup>1</sup> H COSY spectrum of <b>1</b>	S7
Figure S7	NOESY spectrum of <b>1</b>	S8
Figure S8	<sup>1</sup> H NMR spectrum of <b>2</b>	S9
Figure S9	<sup>13</sup> C NMR spectrum of <b>2</b>	S10
Figure S10	LR-ESI-MS spectrum of <b>2</b>	S11
Figure S11	<sup>1</sup> H NMR spectrum of <b>3</b>	S12
Figure S12	LR-ESI-MS spectrum of <b>3</b>	S13
Figure S13	<sup>1</sup> H NMR spectrum of <b>4</b>	S14
Figure S14	LR-ESI-MS spectrum of <b>4</b>	S15
Figure S15	<sup>1</sup> H NMR spectrum of <b>5</b>	S16
Figure S16	LR-ESI-MS spectrum of <b>5</b>	S17

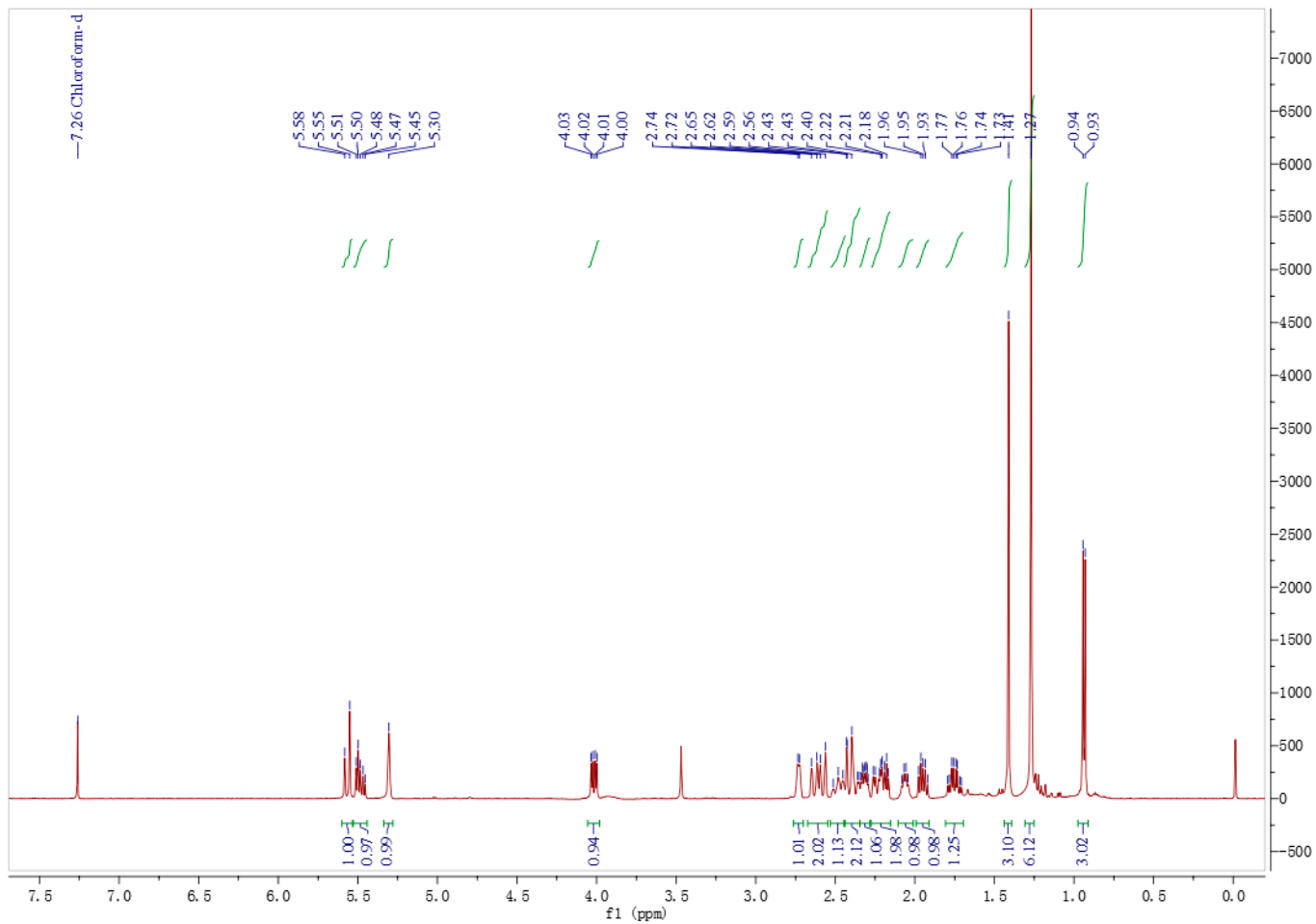


Figure S1. <sup>1</sup>H NMR spectrum of **1**.

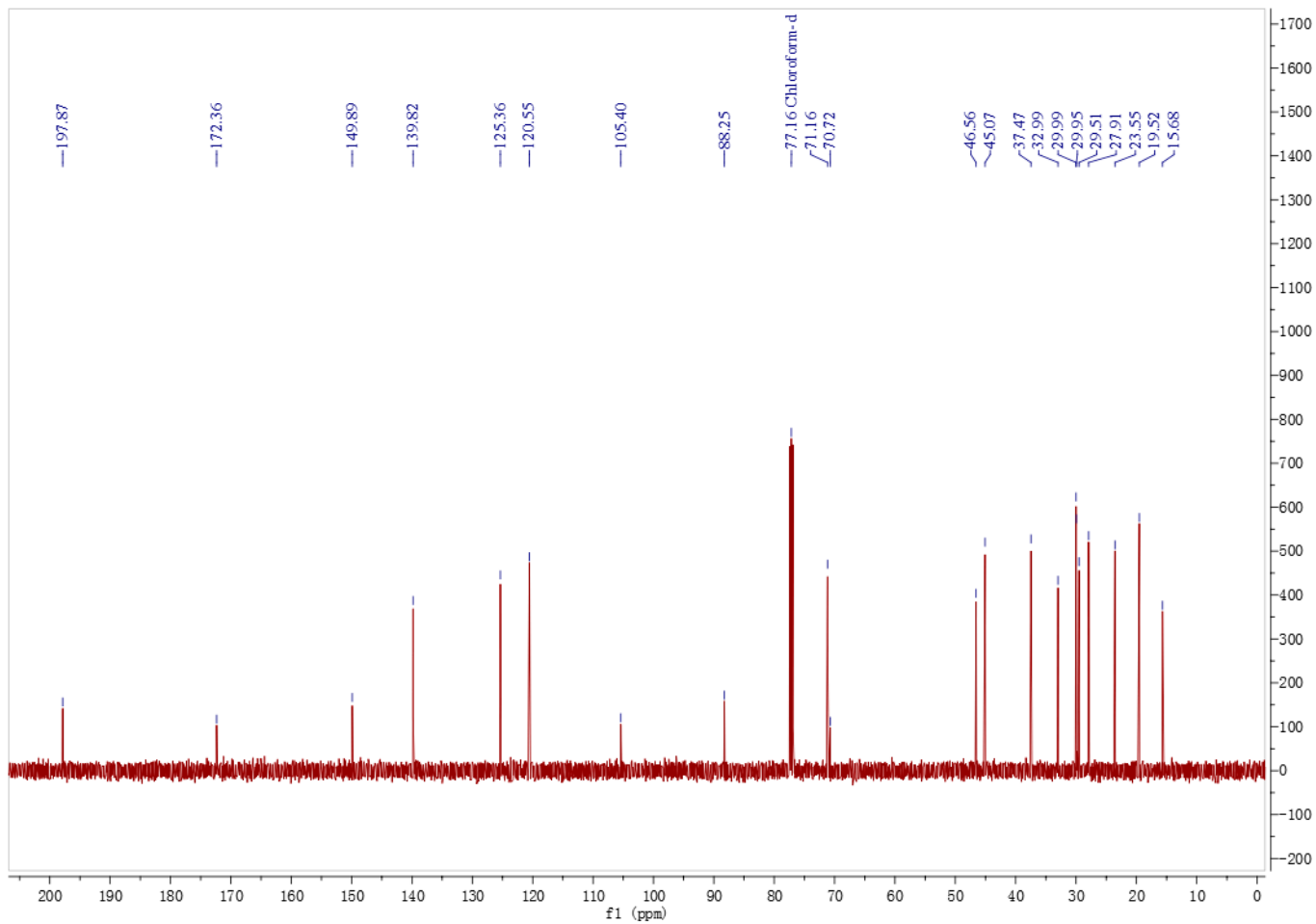


Figure S2.  $^{13}\text{C}$  NMR spectrum of **1**.

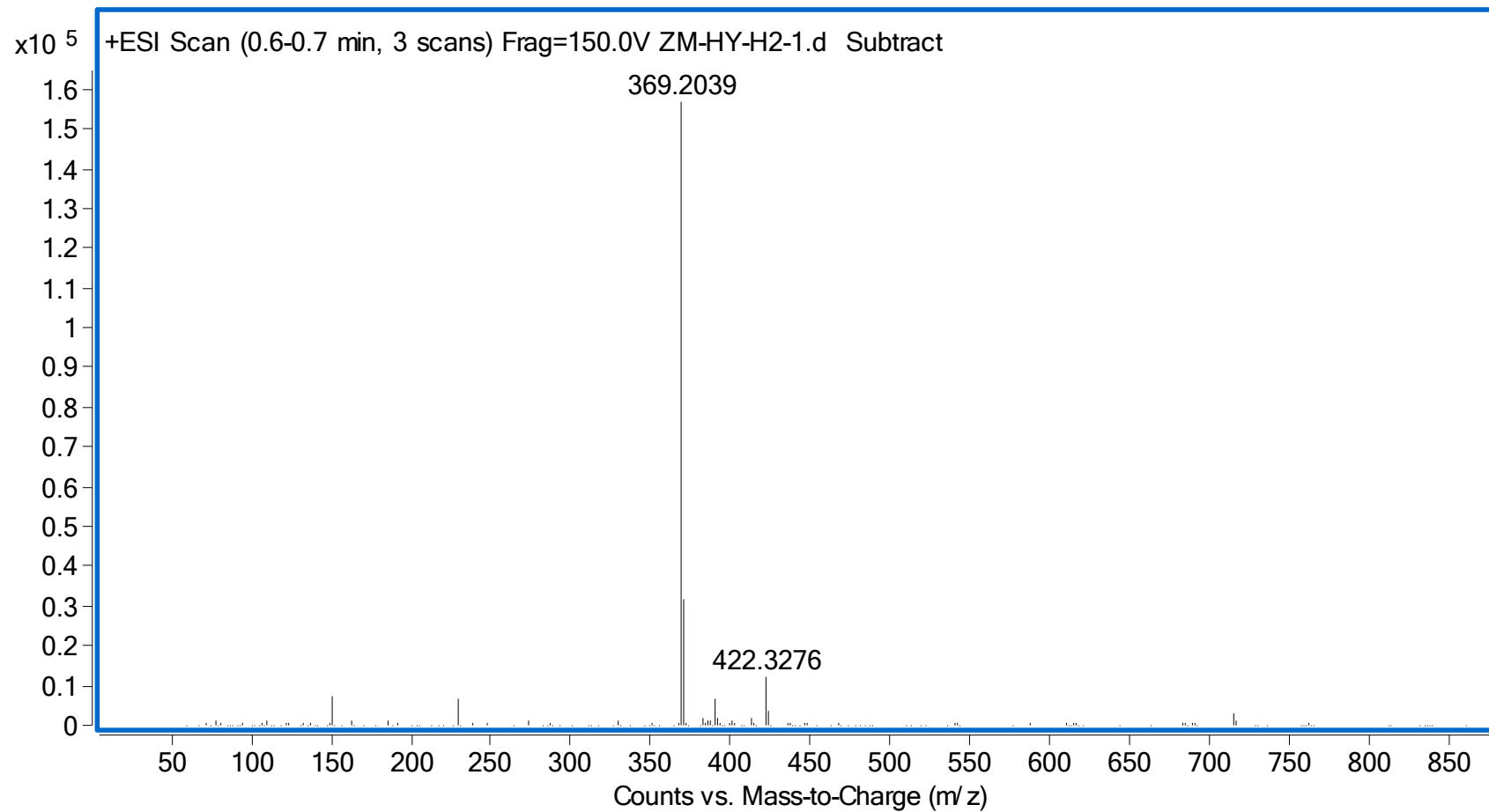


Figure S3. HR-ESI-MS spectrum of **1**.

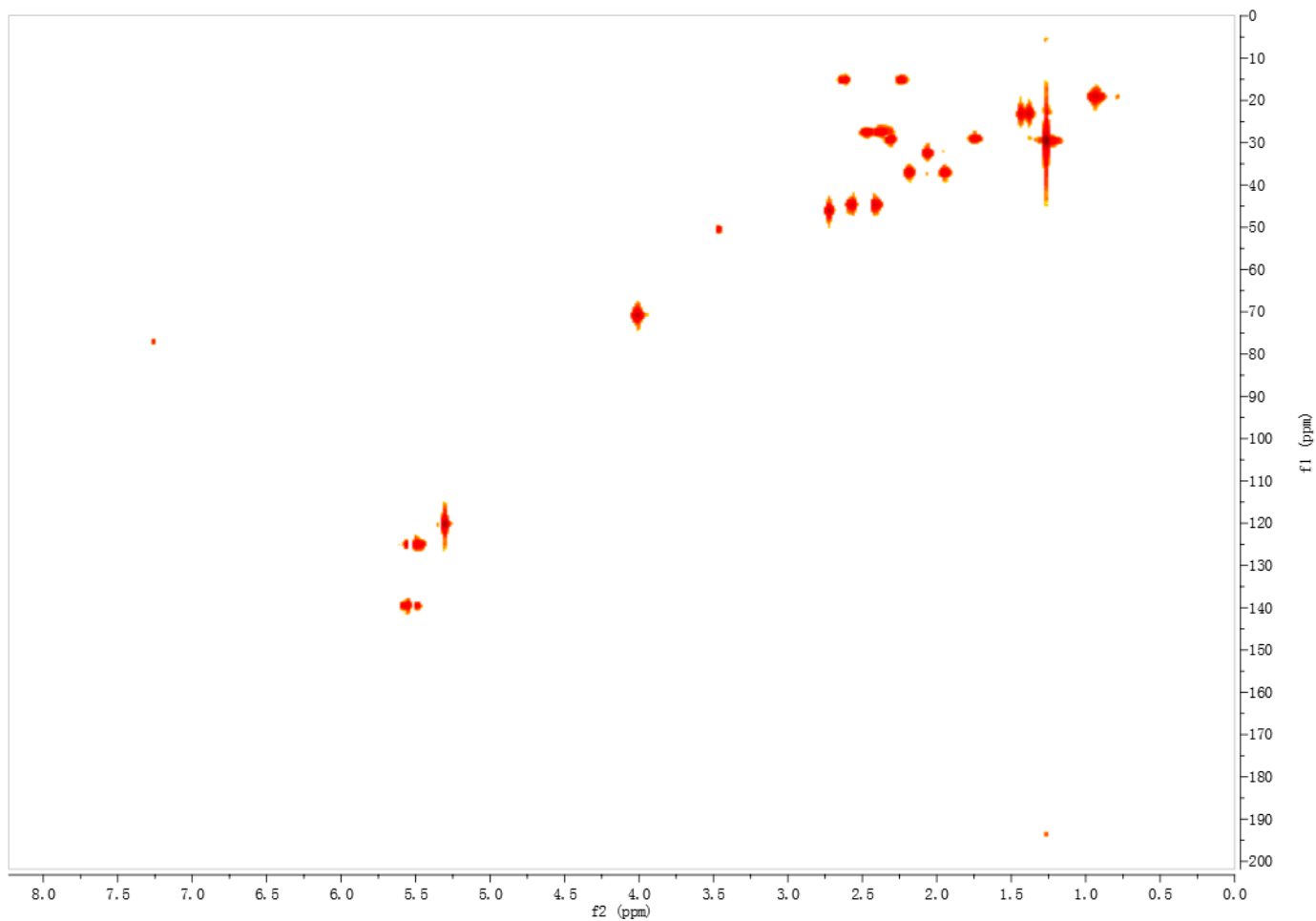


Figure S4. HSQC spectrum of **1**.

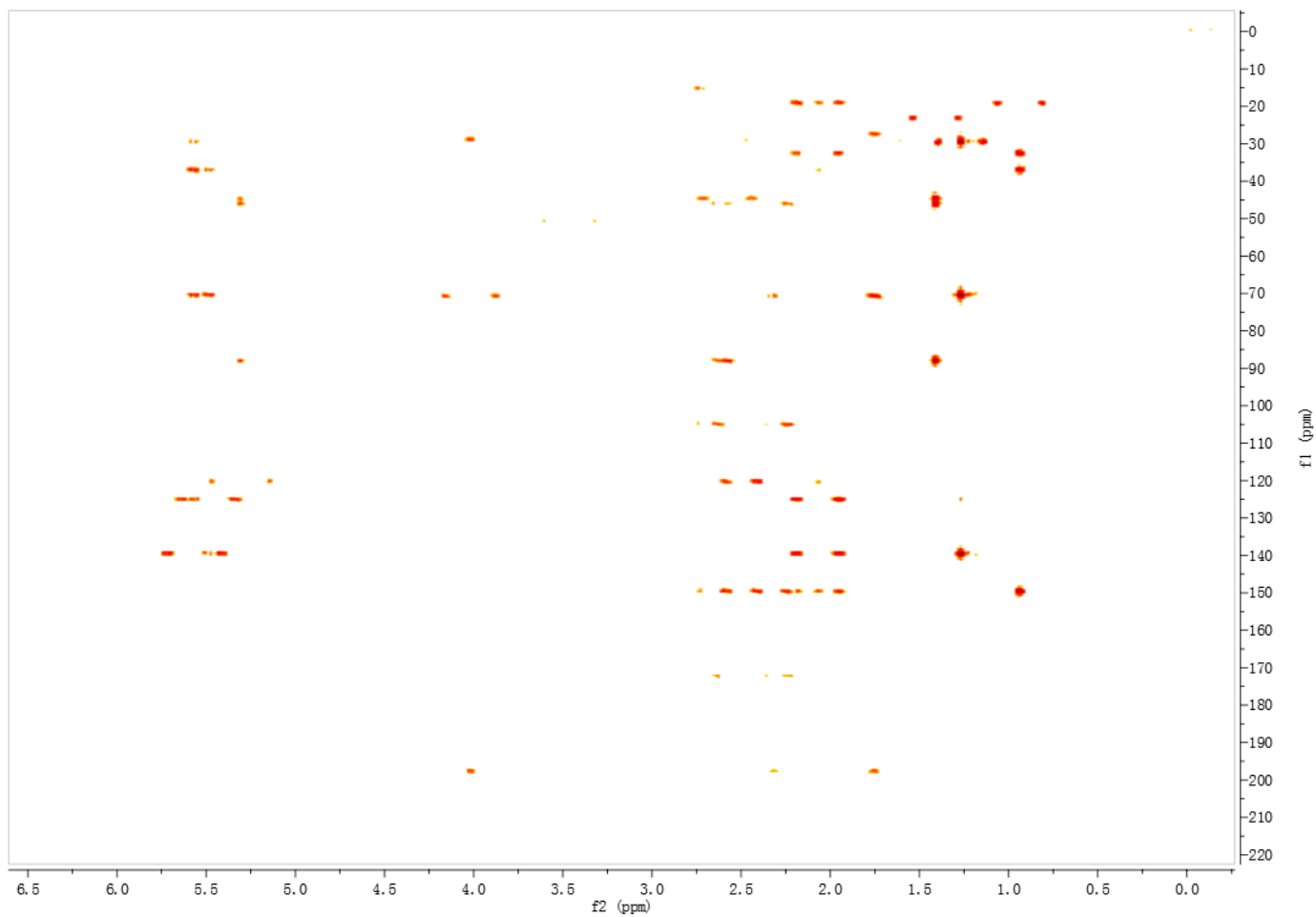


Figure S5. HMBC spectrum of **1**.

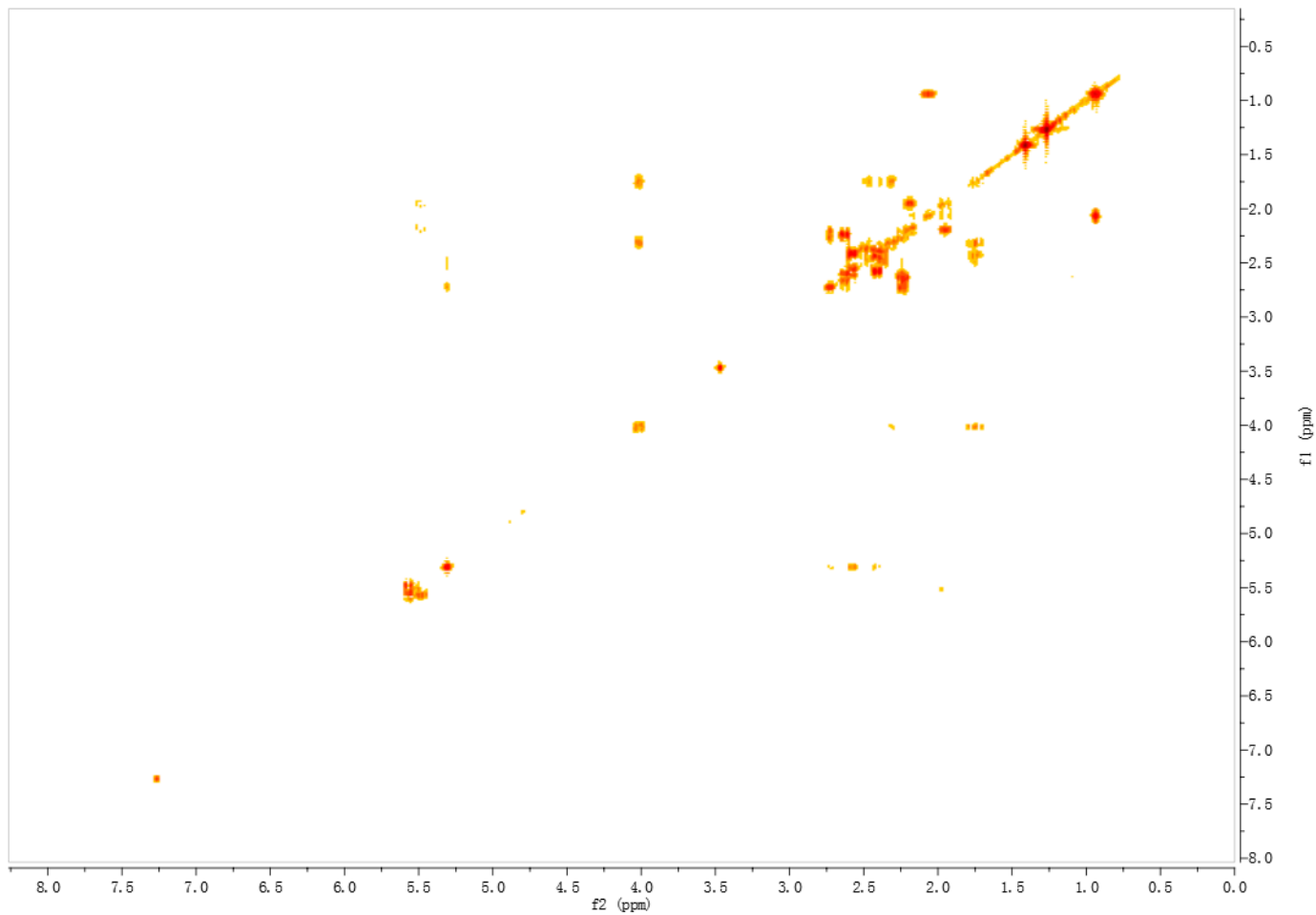


Figure S6.  $^1\text{H}$ - $^1\text{H}$  COSY spectrum of **1**.

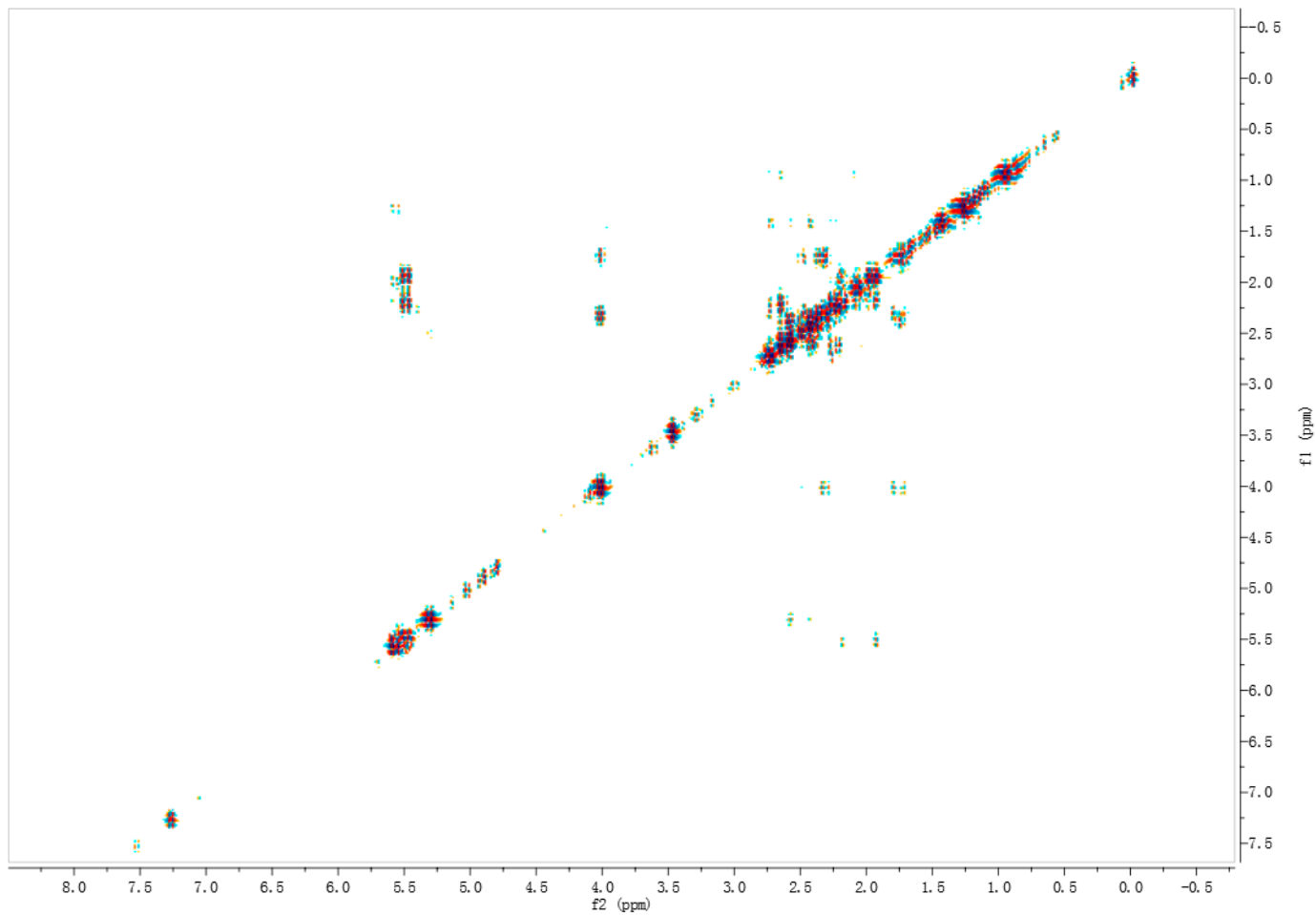


Figure S7. NOESY spectrum of **1**.



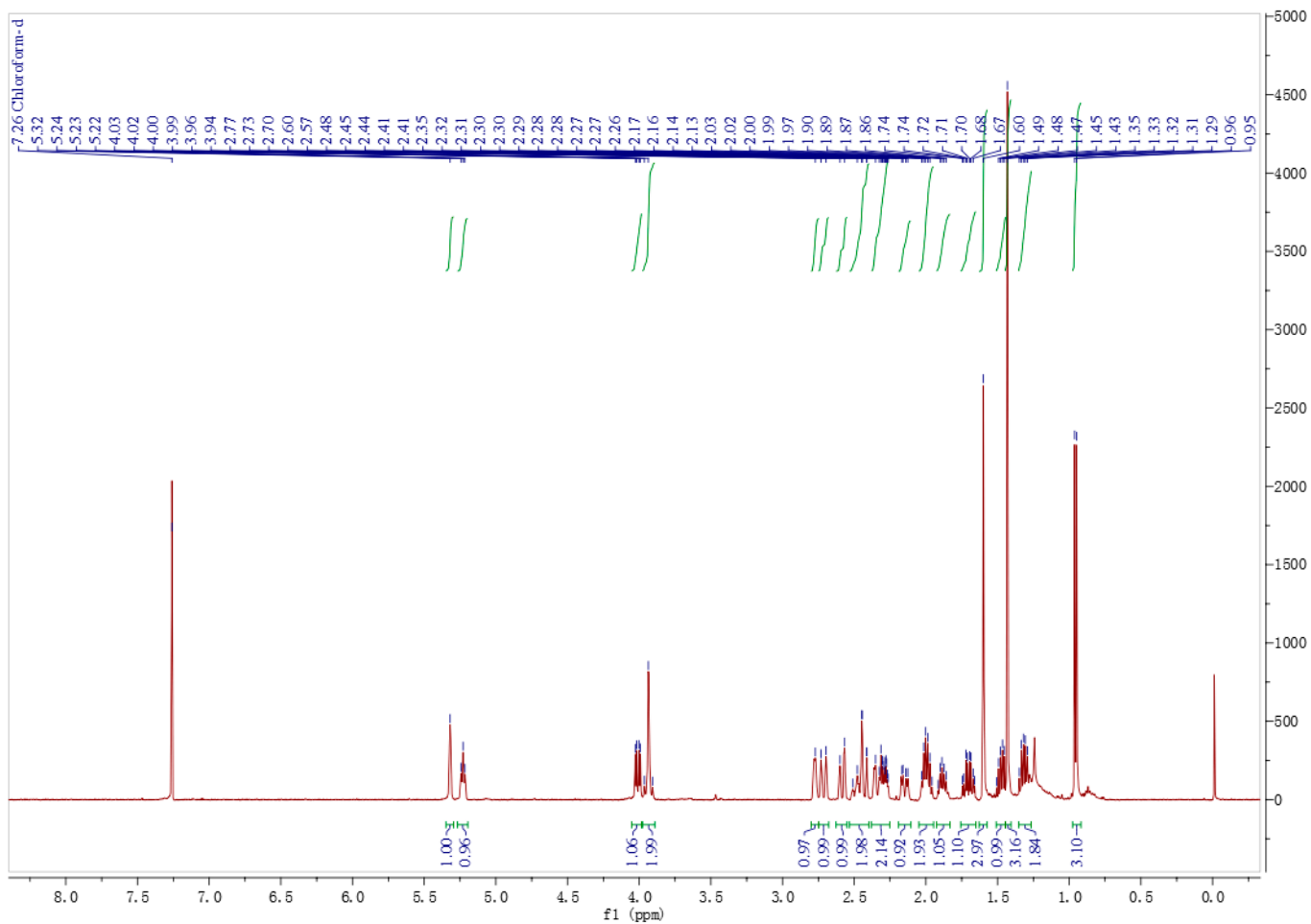


Figure S8.  $^1\text{H}$  NMR spectrum of **2**.

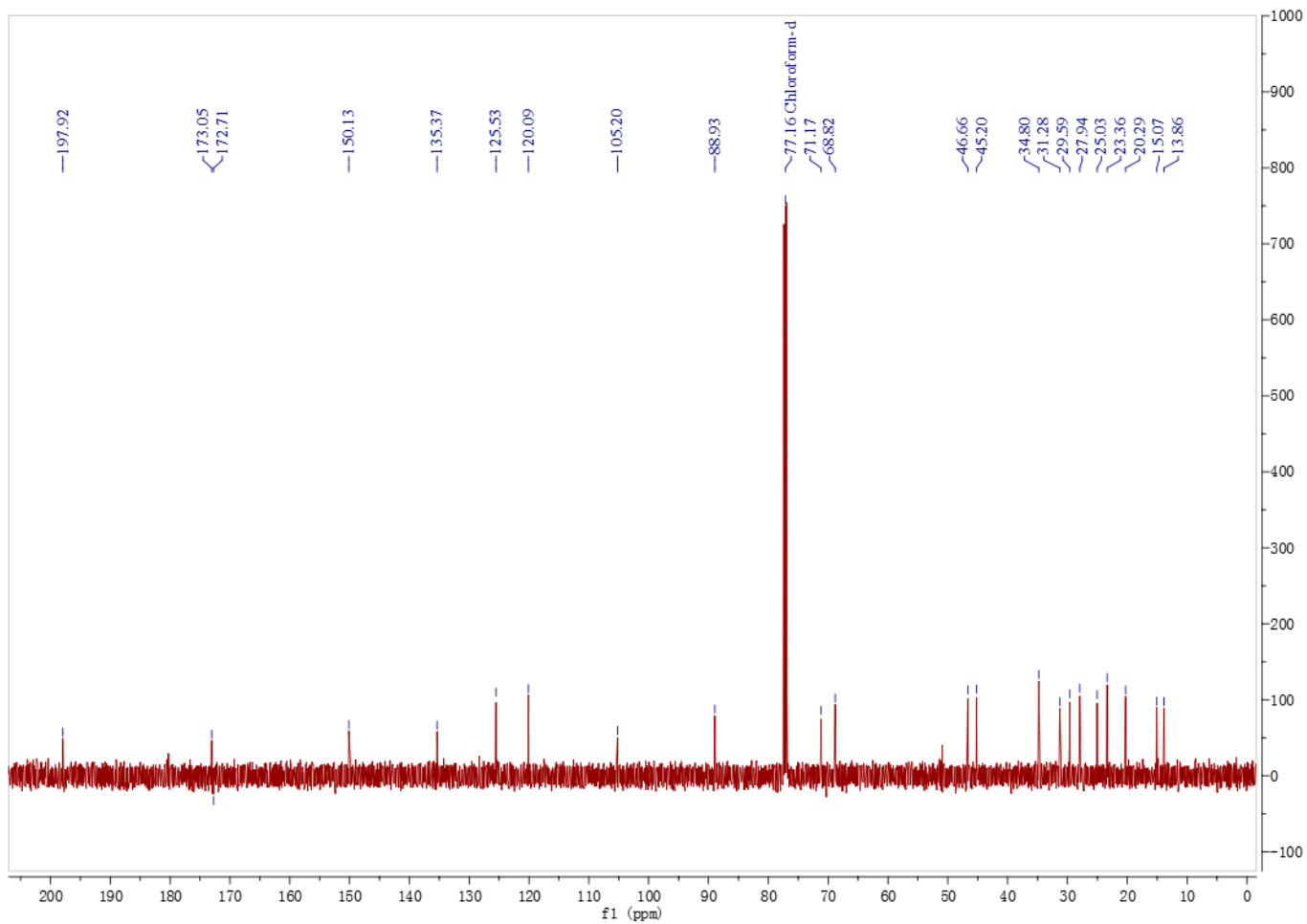


Figure S9.  $^{13}\text{C}$  NMR spectrum of **2**.

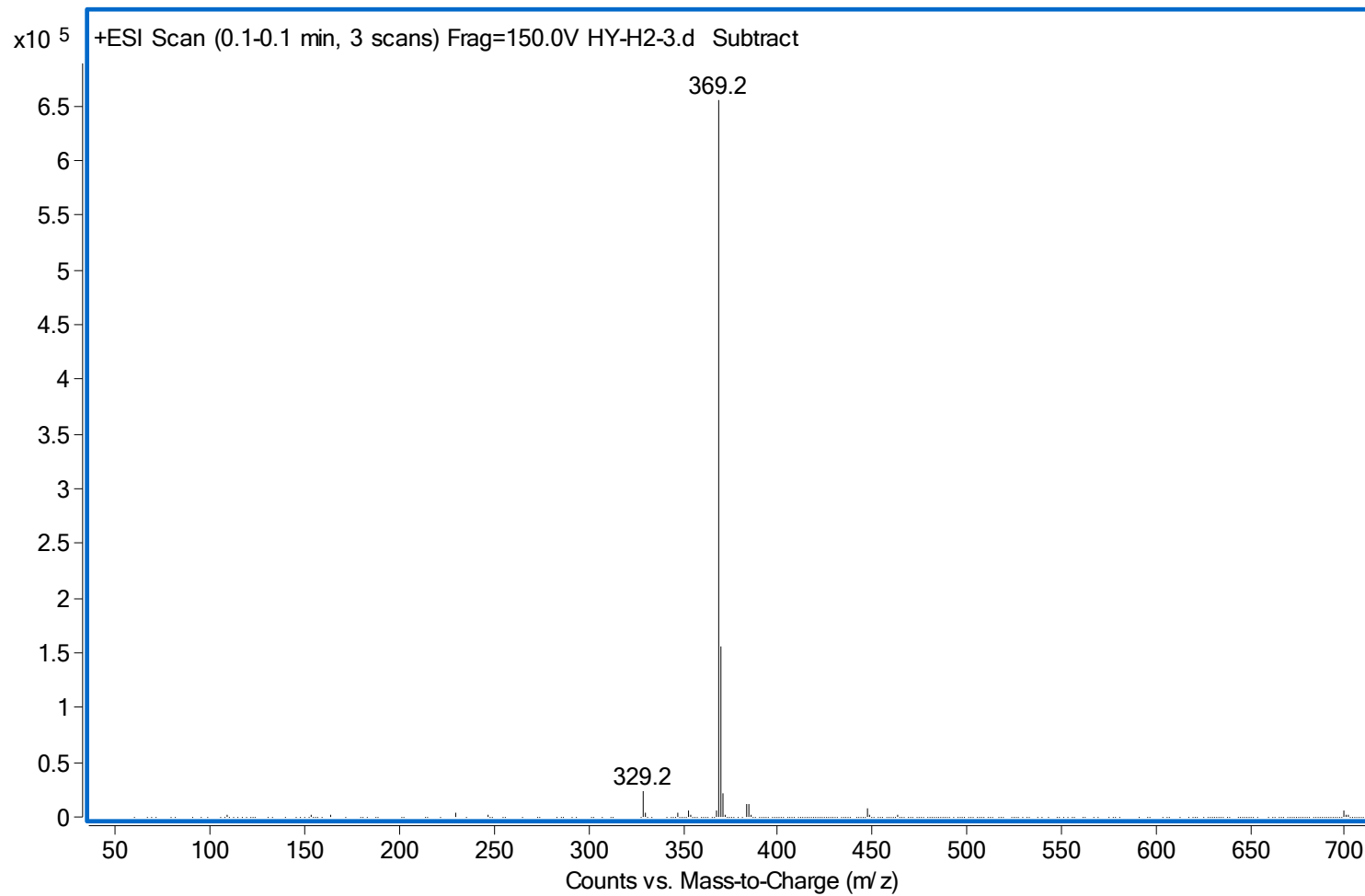


Figure S10. LR-ESI-MS spectrum of **2**.

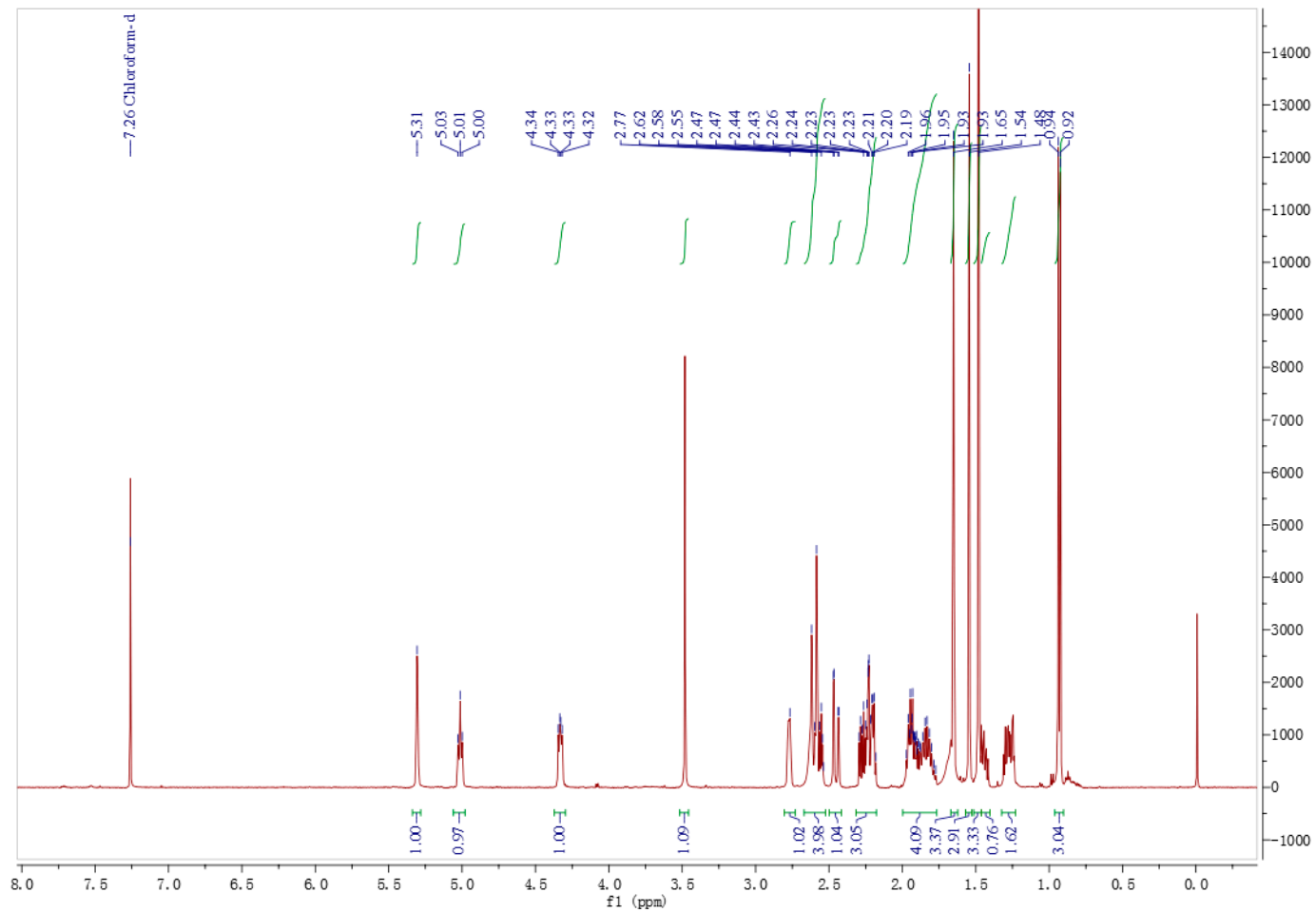


Figure S11.  $^1\text{H}$  NMR spectrum of **3**.

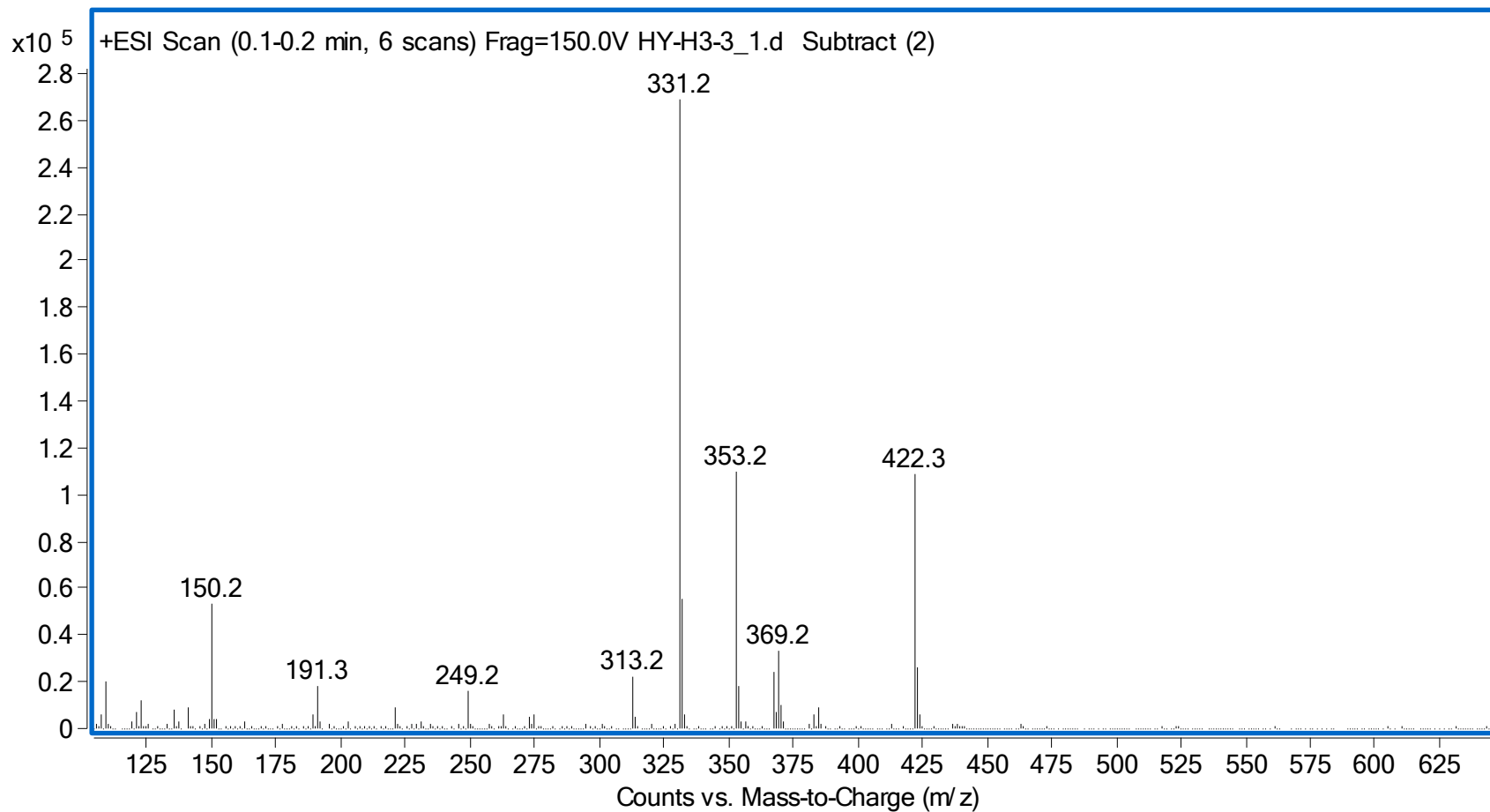


Figure S12. LR-ESI-MS spectrum of **3**.

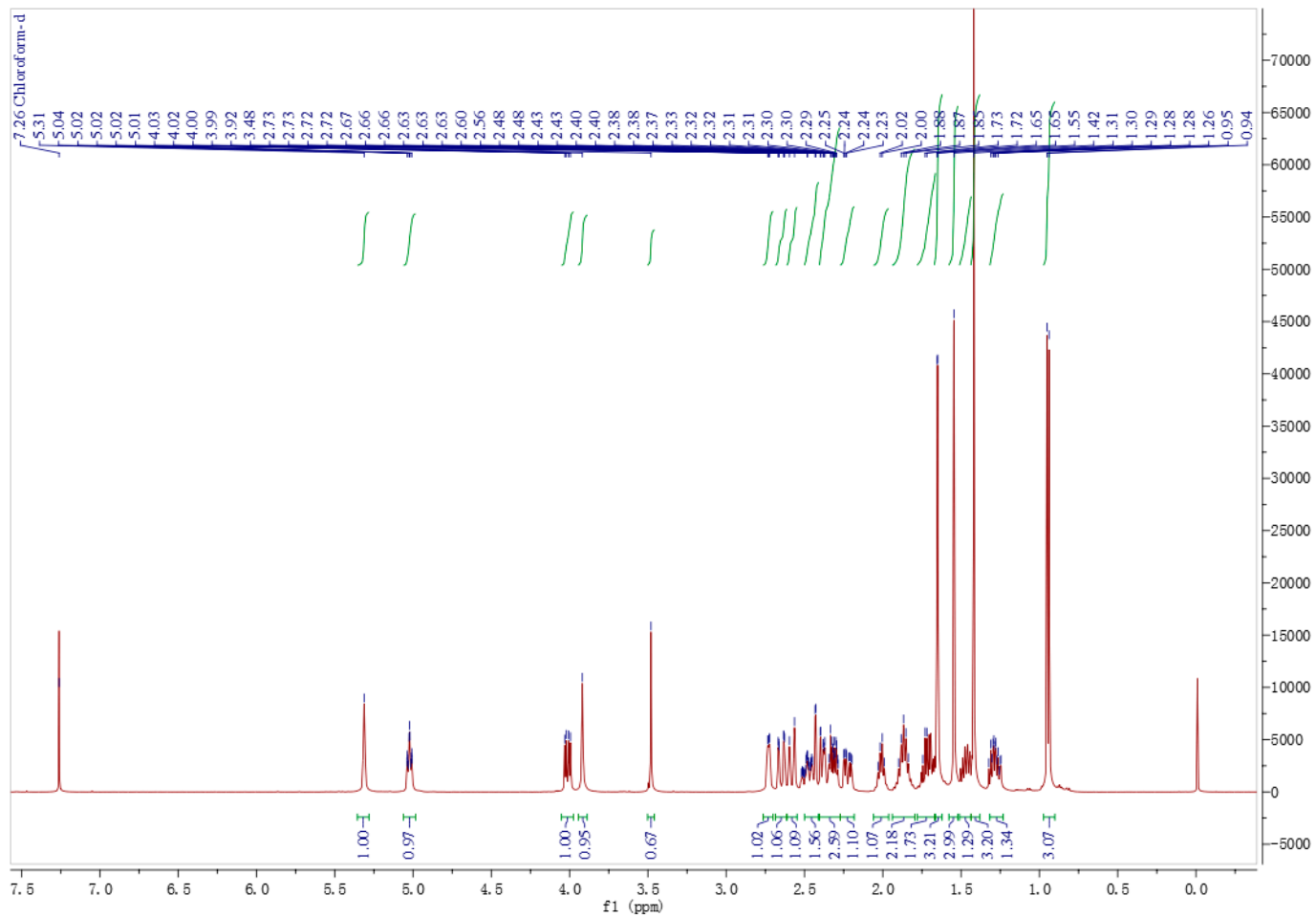


Figure S13.  $^1\text{H}$  NMR spectrum of **4**.

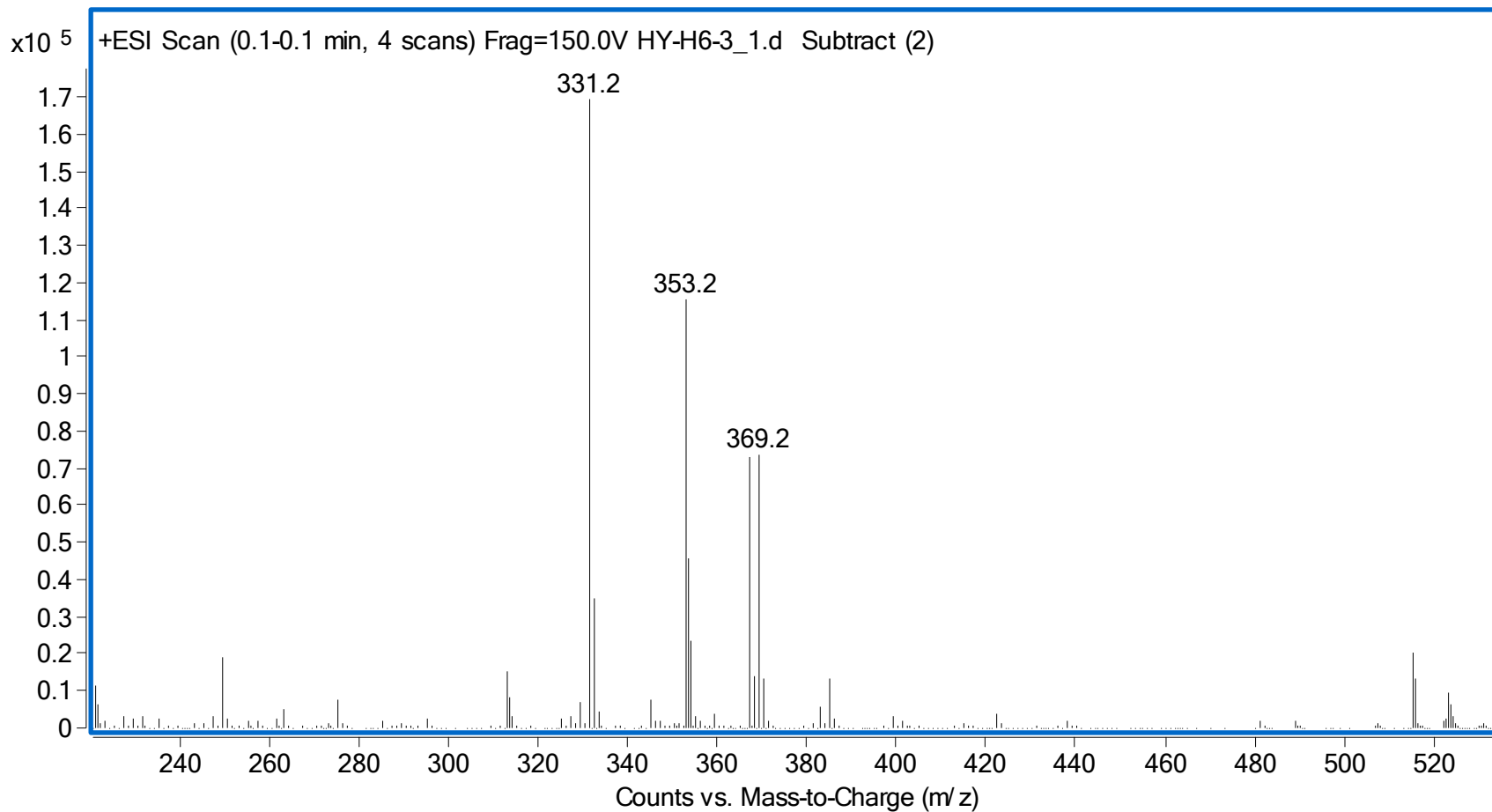


Figure S14. LR-ESI-MS spectrum of 4.

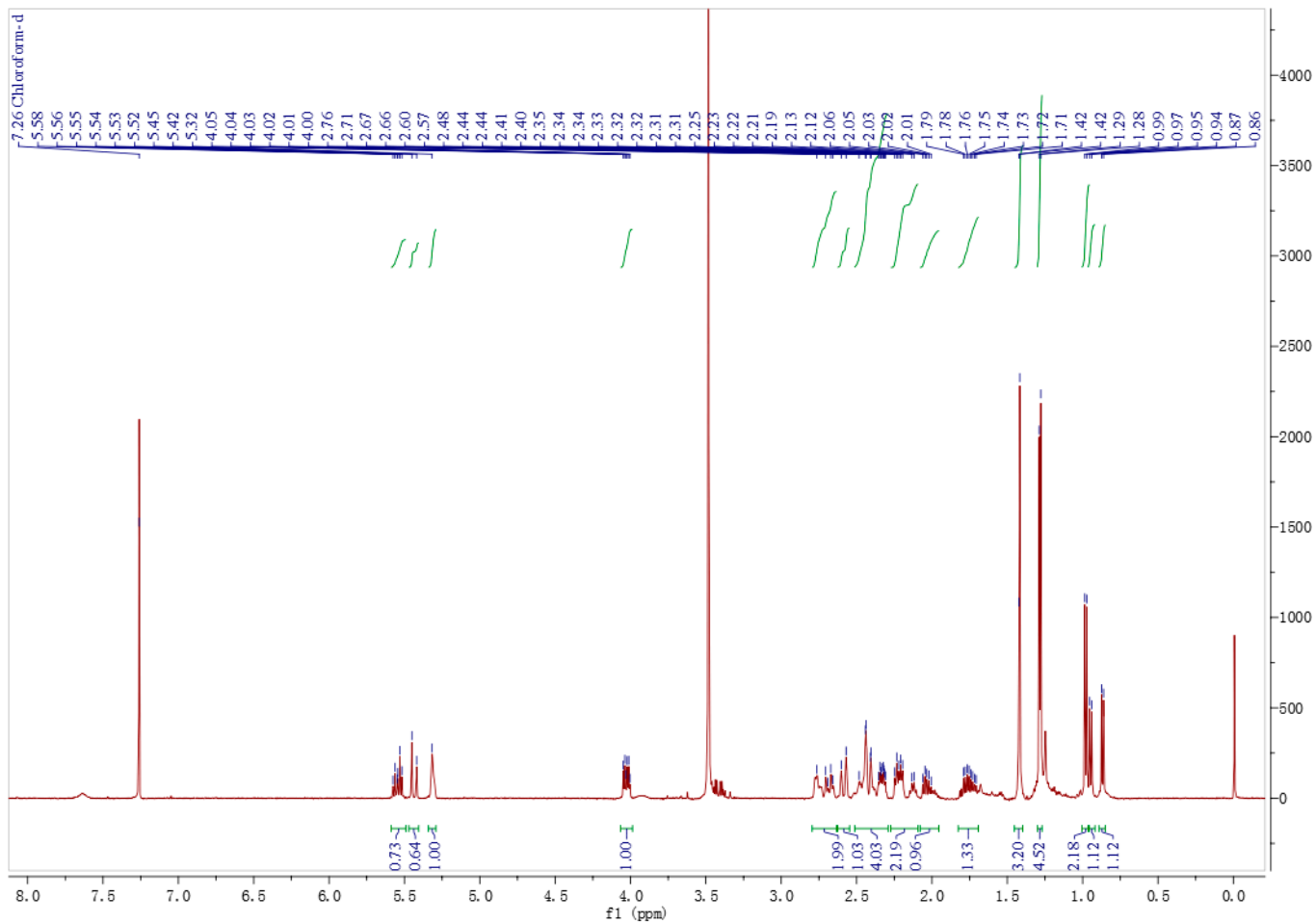


Figure S15.  $^1\text{H}$  NMR spectrum of **5**.



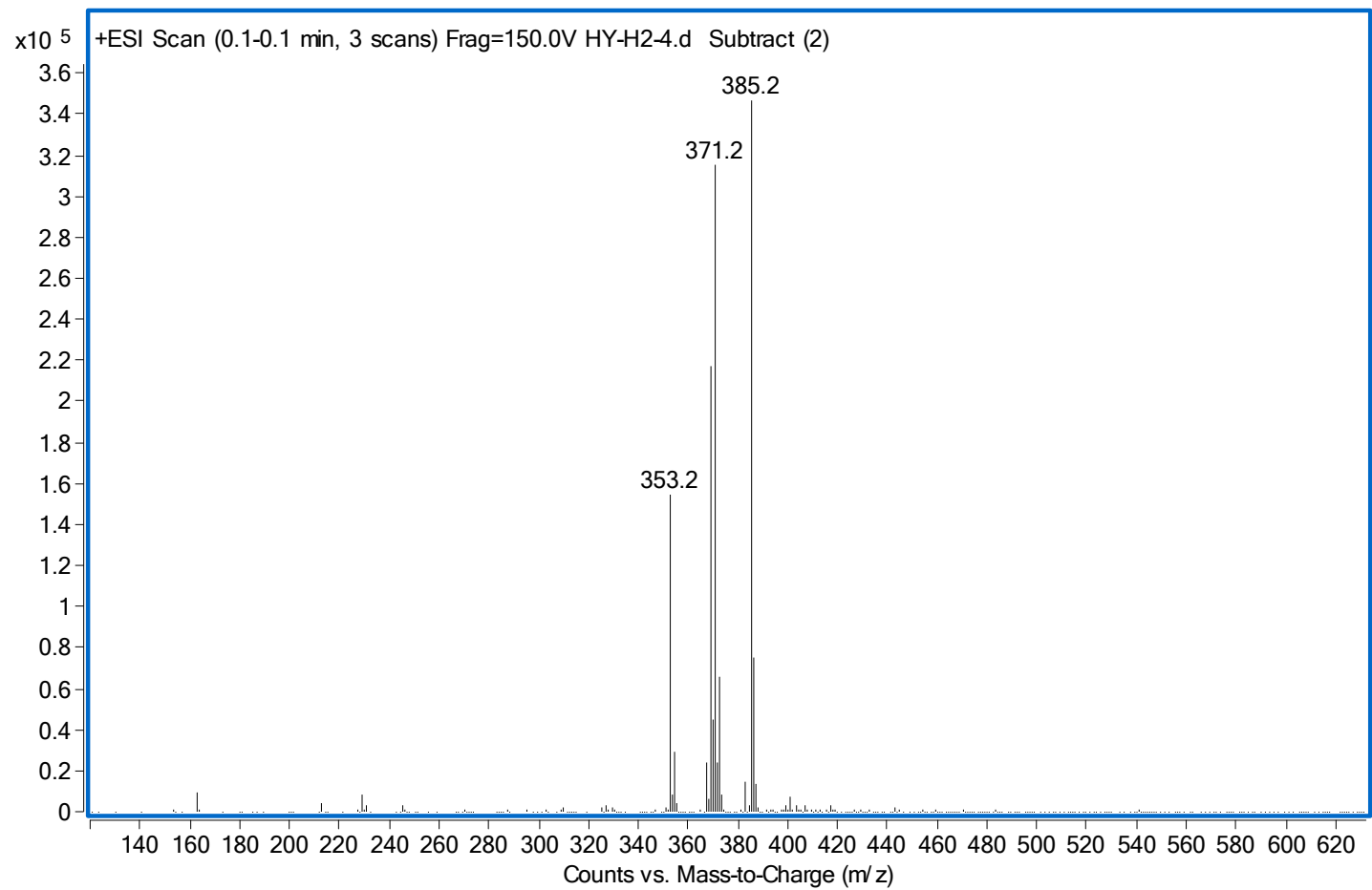


Figure S16. LR-ESI-MS spectrum of 5.