

Article

## Chiral C<sub>2</sub>-Symmetric Diimines with 4,5-Diazafluorene Units

Eugene S. Vasilyev<sup>1</sup>, Sergey N. Bizyaev<sup>1</sup>, Vladislav Yu. Komarov<sup>2,3</sup>, Yury V. Gatilov<sup>1</sup> and Alexey V. Tkachev<sup>1,3\*</sup>

<sup>1</sup> N. N. Vorozhtsov Novosibirsk Institute of Organic Chemistry, Siberian Branch of Russian Academy of Sciences, 9 Academician Lavrentiev Ave., 630090 Novosibirsk, Russian Federation; Vasilyev@nioch.nsc.ru (E.S.V.); bizajev@nioch.nsc.ru (S.N.B.); gatilov@nioch.nsc.ru (Yu.V.G.); atkachev@nioch.nsc.ru (A.V.T.)

<sup>2</sup> Nikolaev Institute of Inorganic Chemistry, Siberian Branch of Russian Academy of Sciences, Novosibirsk 630090, Russian Federation; komarov\_v\_y@ngs.ru

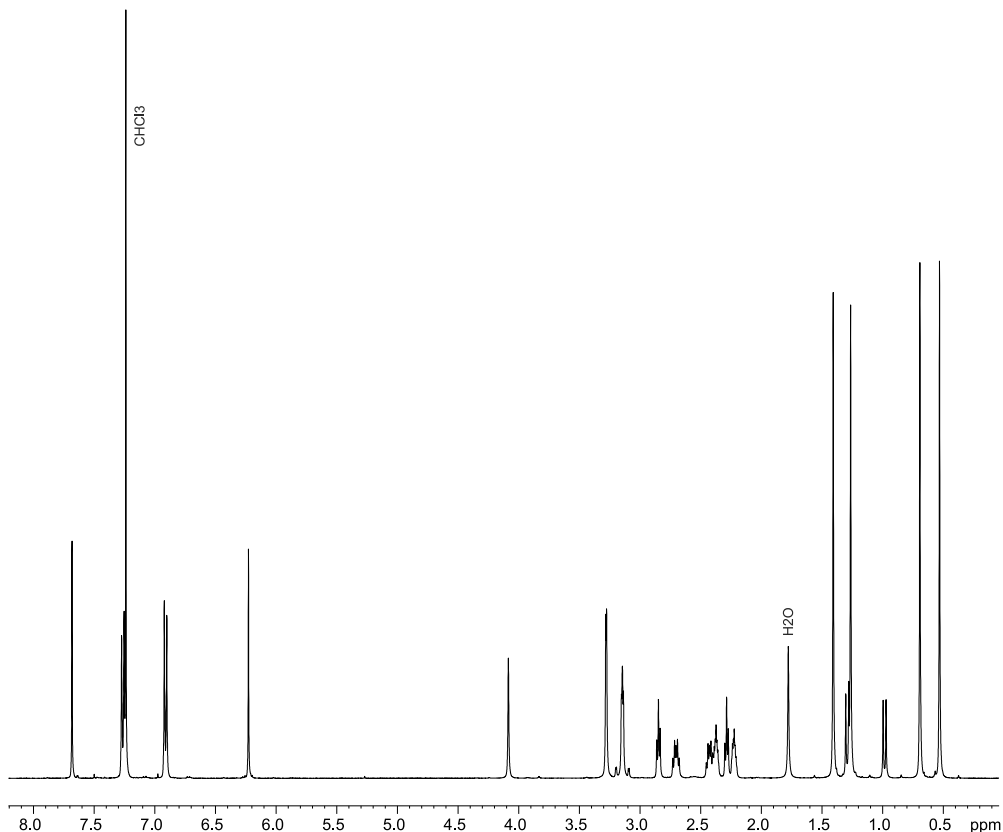
<sup>3</sup> Department of Natural Sciences, Novosibirsk State University, 630090 Novosibirsk, Russian Federation

\* Correspondence: atkachev@nioch.nsc.ru; Fax: +7-(383) 330 9752

### <sup>1</sup>H and <sup>13</sup>C NMR spectra of the compounds described

**4,4'-methylenebis(N-((1R,3R,8R,10R)-2,2,9,9-tetramethyl-3,4,7,8,9,10-hexahydro-1H-1,3:8,10-dimethanocyclopenta[1,2-b:5,4-b']diquinolin-12(2H)-ylidene)aniline) (2)**

<sup>1</sup>H NMR spectrum:



Current Data Parameters  
 NAME comp\_2\_1ts-bs-1412-  
 EXPNO 1  
 PROCNO 1

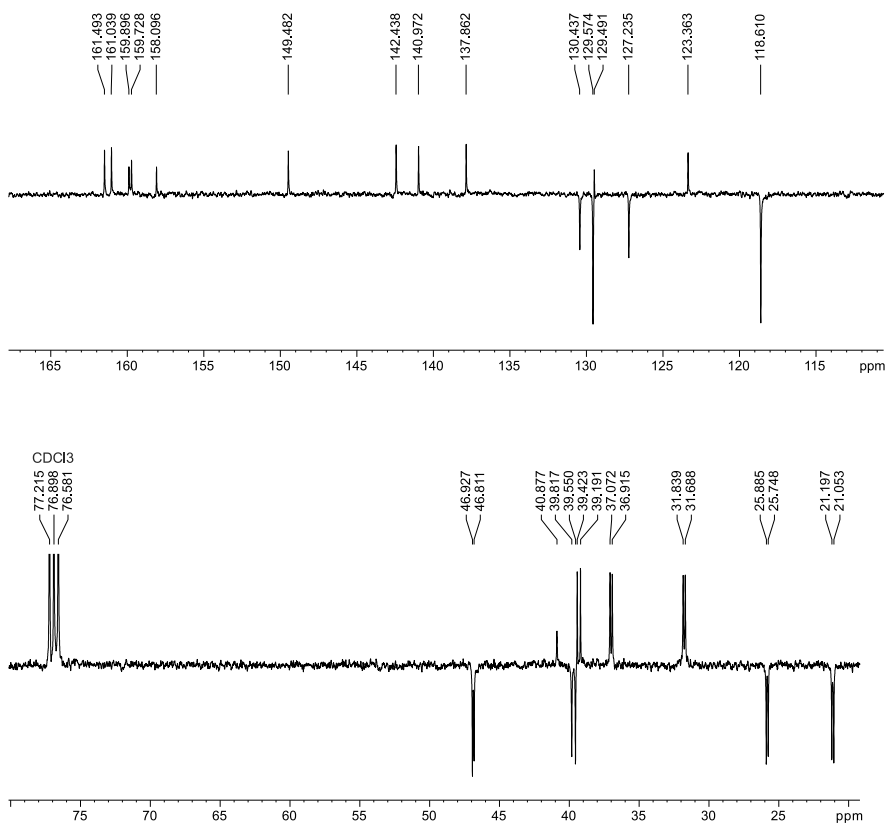
F2 - Acquisition Parameters  
 Date\_ 20180730  
 Time 17.10  
 INSTRUM spect  
 PROBHD 5 mm QNP 1H/13  
 PULPROG zg30  
 TD 32000  
 SOLVENT CDCl3  
 NS 40  
 DS 2  
 SWH 8802.817 Hz  
 FIDRES 0.275088 Hz  
 AQ 1.8176500 sec  
 RG 203  
 DW 56.800 usec  
 DE 6.50 usec  
 TE 293.6 K  
 D1 5.0000000 sec  
 TD0 11111

===== CHANNEL f1 =====  
 NUC1 1H  
 P1 13.70 usec  
 PL1 0 dB  
 PL1W 9.52005005 W  
 SFO1 400.1340013 MHz

F2 - Processing parameters  
 SI 65536  
 SF 400.1300183 MHz  
 WDW EM  
 SSB 0  
 LB 0.30 Hz  
 GB 0  
 PC 1.00

<sup>13</sup>C NMR spectrum:

J-modulation,  
 broad-band decoupling



Current Data Parameters  
 NAME comp\_2\_1ts-bs-1412-3  
 EXPNO 137  
 PROCNO 1

F2 - Acquisition Parameters  
 Date\_ 20180730  
 Time 17.18  
 INSTRUM spect  
 PROBHD 5 mm QNP 1H/13  
 PULPROG jmod  
 TD 65536  
 SOLVENT CDCl3  
 NS 640  
 DS 2  
 SWH 24038.461 Hz  
 FIDRES 0.366798 Hz  
 AQ 1.3631988 sec  
 RG 203  
 DW 20.800 usec  
 DE 6.50 usec  
 TE 293.9 K  
 CNST2 145.0000000  
 CNST11 1.0000000  
 D1 5.0000000 sec  
 D20 0.00689655 sec  
 TD0 11111

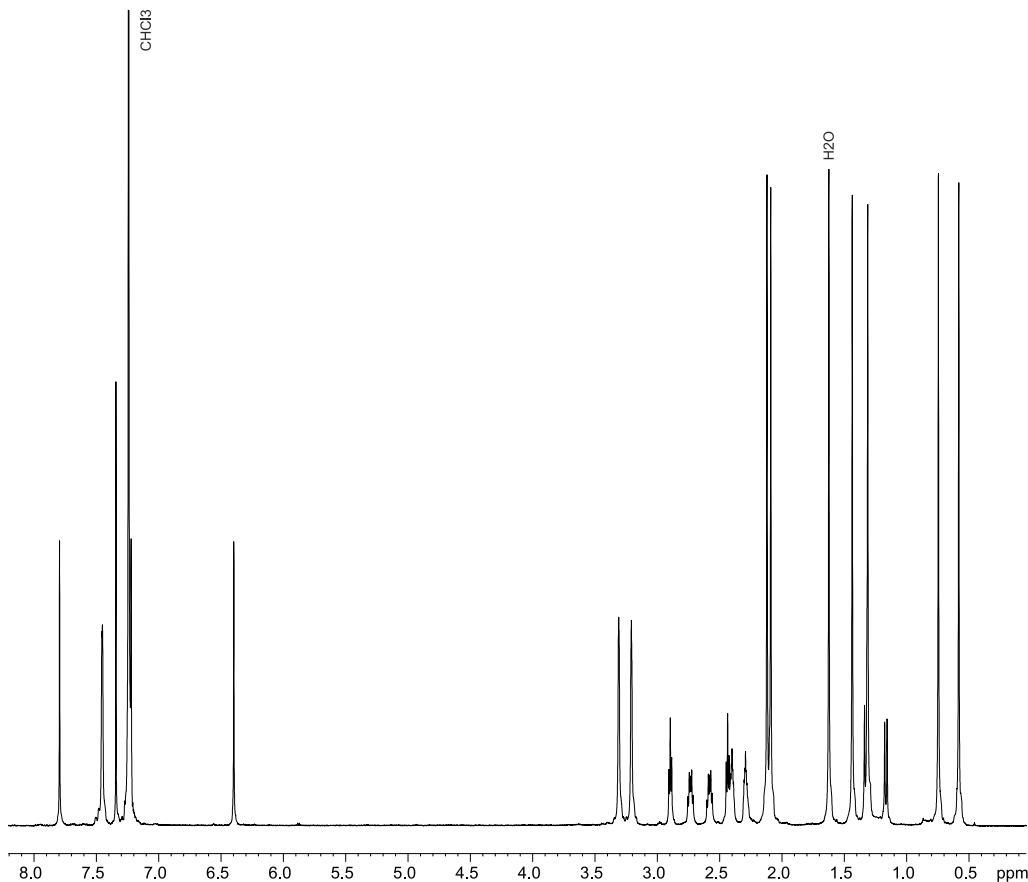
===== CHANNEL f1 =====  
 NUC1 13C  
 P1 9.60 usec  
 P2 19.20 usec  
 PL1 0 dB  
 PL1W 36.42235184 W  
 SFO1 100.6243395 MHz

===== CHANNEL f2 =====  
 CPDPRG2 waltz16  
 NUC2 1H  
 PCPD2 86.00 usec  
 PL2 0 dB  
 PL12 16.00 dB  
 PL2W 9.52005005 W  
 PL12W 0.23913284 W  
 SFO2 400.1316005 MHz

F2 - Processing parameters  
 SI 131072  
 SF 100.6127842 MHz  
 WDW EM  
 SSB 0  
 LB 3.00 Hz  
 GB 0  
 PC 1.40

**3,3',5,5'-tetramethyl-N4,N4'-bis((1*R*,3*R*,8*R*,10*R*)-2,2,9,9-tetramethyl-3,4,7,8,9,10-hexahydro-1*H*-1,3:8,10-dimethanocyclopenta[1,2-*b*:5,4-*b'*]diquinolin-12(2*H*)-ylidene)-[1,1'-biphenyl]-4,4'-diamine (3)**

<sup>1</sup>H NMR spectrum:



Current Data Parameters  
 NAME comp\_3\_Its-bs-1419-  
 EXPNO 1  
 PROCNO 1

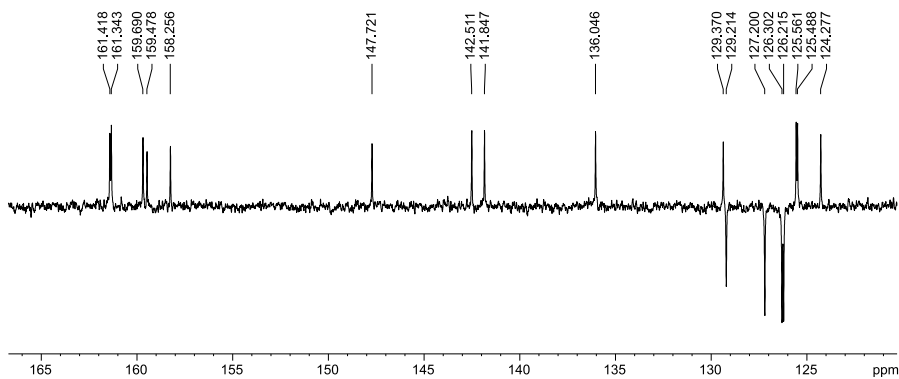
F2 - Acquisition Parameters  
 Date\_ 20180913  
 Time 12.30  
 INSTRUM spect  
 PROBHD 5 mm Multinucl  
 PULPROG zg30  
 TD 65536  
 SOLVENT CDCl3  
 NS 40  
 DS 2  
 SWH 10964.912 Hz  
 FIDRES 0.167311 Hz  
 AQ 2.9884915 sec  
 RG 406.4  
 DW 45.600 usec  
 DE 6.00 usec  
 TE 300.0 K  
 D1 5.00000000 sec  
 TD0 11111

===== CHANNEL f1 =====  
 NUC1 1H  
 P1 13.75 usec  
 PL1 -3.00 dB  
 SFO1 500.1347512 MHz

F2 - Processing parameters  
 SI 65536  
 SF 500.1300235 MHz  
 WDW EM  
 SSB 0  
 LB 0.30 Hz  
 GB 0  
 PC 1.00

<sup>13</sup>C NMR spectrum:

J-modulation,  
 broad-band decoupling



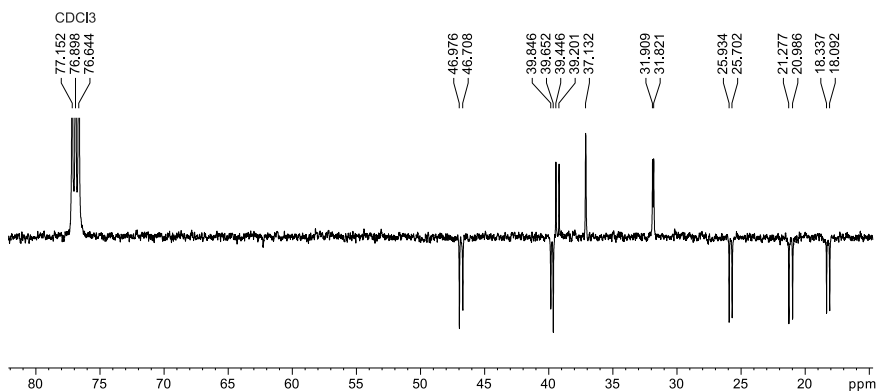
Current Data Parameters  
 NAME comp\_3\_Its-bs-1419-4  
 EXPNO 137  
 PROCNO 1

F2 - Acquisition Parameters  
 Date\_ 20180913  
 Time 12.38  
 INSTRUM spect  
 PROBHD 5 mm Multinucl  
 PULPROG jmod  
 TD 65536  
 SOLVENT DMSO  
 NS 3872  
 DS 4  
 SWH 30303.031 Hz  
 FIDRES 0.462388 Hz  
 AQ 1.0813940 sec  
 RG 8192  
 DW 16.500 usec  
 DE 6.00 usec  
 TE 300.0 K  
 CNST2 145.0000000  
 CNST11 1.0000000  
 D1 4.00000000 sec  
 d20 0.00689655 sec  
 DELTA 0.00001184 sec  
 TD0 11111

===== CHANNEL f1 =====  
 NUC1 13C  
 P1 9.30 usec  
 p2 18.60 usec  
 PL1 -5.00 dB  
 SFO1 125.7720754 MHz

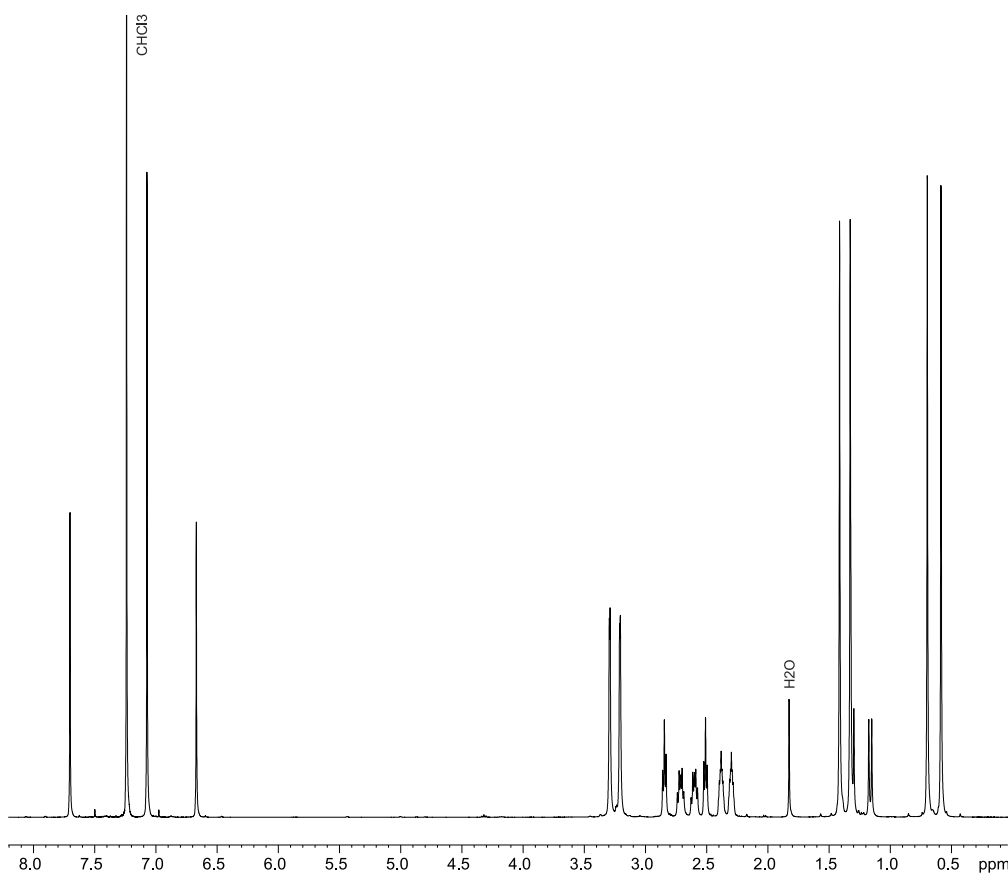
===== CHANNEL f2 =====  
 CPDPRG2 waltz16  
 NUC2 1H  
 PCPD2 76.50 usec  
 PL2 -3.00 dB  
 PL12 13.00 dB  
 SFO2 500.1320005 MHz

F2 - Processing parameters  
 SI 131072  
 SF 125.7578067 MHz  
 WDW EM  
 SSB 0  
 LB 3.00 Hz  
 GB 0  
 PC 1.00



**N1,N4-bis((1R,3R,8R,10R)-2,2,9,9-tetramethyl-3,4,7,8,9,10-hexahydro-1H-1,3:8,10-dimethanocyclopenta[1,2-b:5,4-b']diquinolin-12(2H)-ylidene)benzene-1,4-diamine (4)**

<sup>1</sup>H NMR spectrum:



Current Data Parameters  
 NAME comp\_4\_1 ts-bs-1422-  
 EXPNO 1  
 PROCNO 1

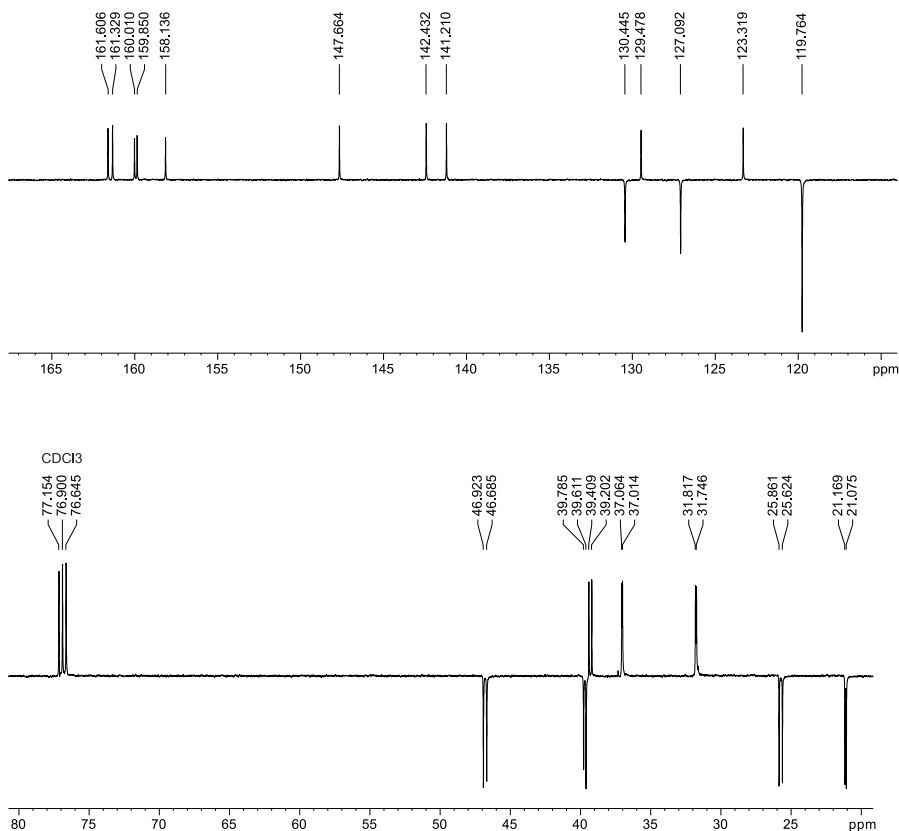
F2 - Acquisition Parameters  
 Date 20181004  
 Time 18.25  
 INSTRUM spect  
 PROBHD 5 mm QNP 1H/13  
 PULPROG zg30  
 TD 32000  
 SOLVENT CDCl3  
 NS 64  
 DS 2  
 SWH 8802.817 Hz  
 FIDRES 0.275088 Hz  
 AQ 1.8176500 sec  
 RG 203  
 DW 56.800 usec  
 DE 6.50 usec  
 TE 292.3 K  
 D1 5.0000000 sec  
 TD0 11111

===== CHANNEL f1 =====  
 NUC1 1H  
 P1 13.70 usec  
 PL1 0 dB  
 PL1W 9.52005005 W  
 SFO1 400.1340013 MHz

F2 - Processing parameters  
 SI 65536  
 SF 400.1300185 MHz  
 WDW EM  
 SSB 0  
 LB 0.30 Hz  
 GB 0  
 PC 1.40

<sup>13</sup>C NMR spectrum:

J-modulation,  
 broad-band decoupling



Current Data Parameters  
 NAME comp\_4\_1 ts-bs-1422-1\_C  
 EXPNO 137  
 PROCNO 1

F2 - Acquisition Parameters  
 Date 20181003  
 Time 11.42  
 INSTRUM spect  
 PROBHD 5 mm Multinucl  
 PULPROG jmod  
 TD 65536  
 SOLVENT CDCl3  
 NS 1264  
 DS 4  
 SWH 30303.031 Hz  
 FIDRES 0.462388 Hz  
 AQ 1.0813940 sec  
 RG 3251  
 DW 16.500 usec  
 DE 6.00 usec  
 TE 300.0 K  
 CNST2 145.0000000  
 CNST11 1.0000000  
 D1 4.0000000 sec  
 d20 0.00689655 sec  
 DELTA 0.00001184 sec  
 TD0 11111

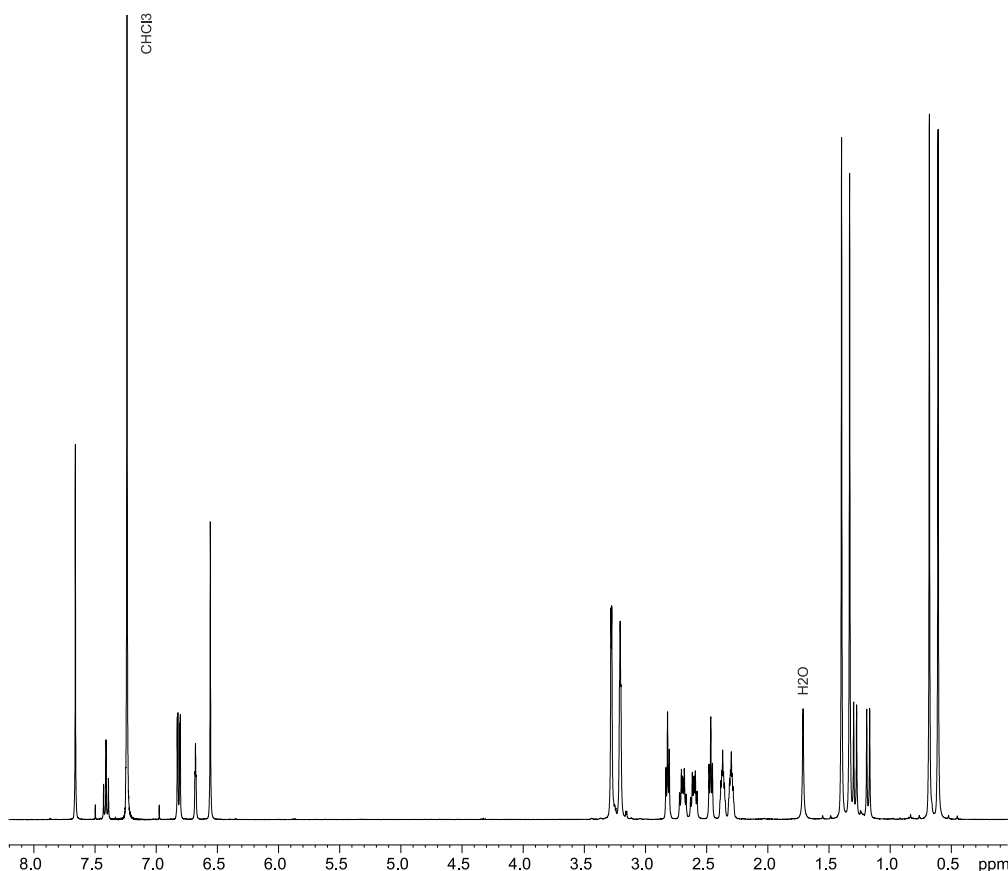
===== CHANNEL f1 =====  
 NUC1 13C  
 P1 9.30 usec  
 p2 18.60 usec  
 PL1 5.00 dB  
 SFO1 125.7720754 MHz

===== CHANNEL f2 =====  
 CPDPRG2 waltz16  
 NUC2 1H  
 PCPD2 76.50 usec  
 PL2 -3.00 dB  
 PL12 13.00 dB  
 SFO2 500.1320005 MHz

F2 - Processing parameters  
 SI 131072  
 SF 125.7578116 MHz  
 WDW EM  
 SSB 0  
 LB 2.00 Hz  
 GB 0  
 PC 1.00

**N1,N3-bis((1R,3R,8R,10R)-2,2,9,9-tetramethyl-3,4,7,8,9,10-hexahydro-1H-1,3:8,10-dimethanocyclopenta[1,2-b:5,4-b']diquinolin-12(2H)-ylidene)benzene-1,3-diamine (5)**

<sup>1</sup>H NMR spectrum:



Current Data Parameters  
 NAME comp\_5\_1 t s- bs- 1428-  
 EXPNO 1  
 PROCNO 1

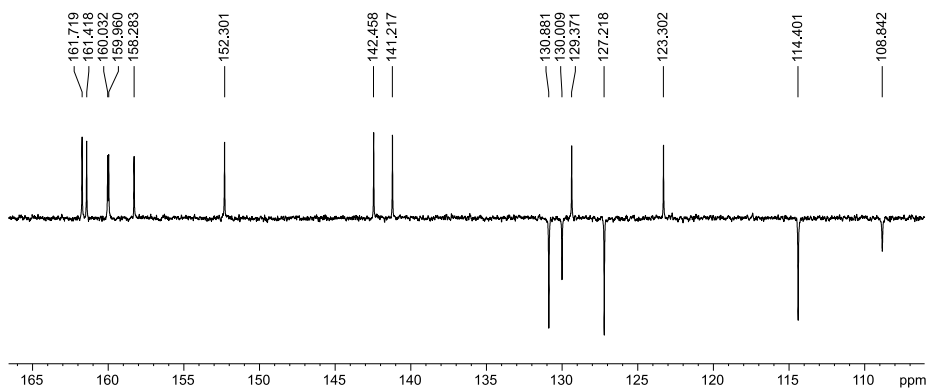
F2 - Acquisition Parameters  
 Date 20181010  
 Time 12.20  
 INSTRUM spect  
 PROBHD 5 mm QNP 1H/13  
 PULPROG zg30  
 TD 32768  
 SOLVENT CDCl3  
 NS 96  
 DS 2  
 SWH 8802.817 Hz  
 FIDRES 0.268641 Hz  
 AQ 1.8612725 sec  
 RG 40.3  
 DW 56.800 usec  
 DE 6.50 usec  
 TE 292.7 K  
 D1 5.0000000 sec  
 TD0 256

===== CHANNEL f1 =====  
 NUC1 1H  
 P1 13.70 usec  
 PL1 0 dB  
 PL1W 9.52005005 W  
 SFO1 400.1340013 MHz

F2 - Processing parameters  
 SI 65536  
 SF 400.1300182 MHz  
 WDW EM  
 SSB 0  
 LB 0.18 Hz  
 GB 0  
 PC 1.40

<sup>13</sup>C NMR spectrum:

J-modulation,  
 broad-band decoupling



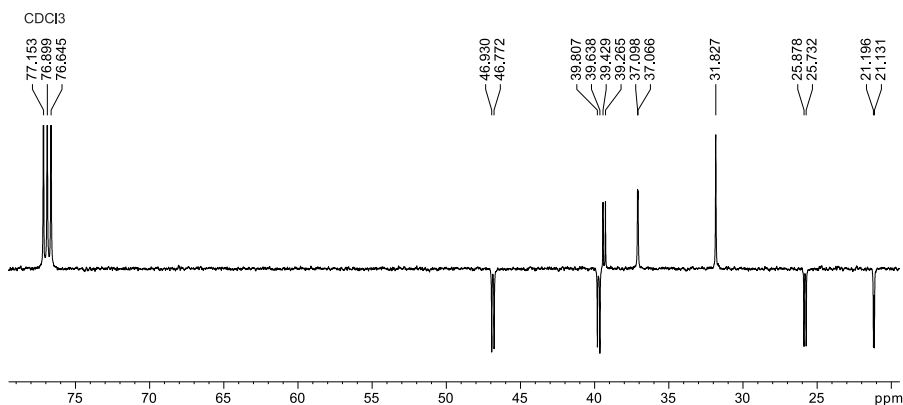
Current Data Parameters  
 NAME comp\_5\_1 t s- bs- 1428-1\_C  
 EXPNO 137  
 PROCNO 1

F2 - Acquisition Parameters  
 Date 20181010  
 Time 14.04  
 INSTRUM spect  
 PROBHD 5 mm Multinud  
 PULPROG jmod  
 TD 65536  
 SOLVENT DMSO  
 NS 1968  
 DS 4  
 SWH 30303.031 Hz  
 FIDRES 0.462388 Hz  
 AQ 1.0813940 sec  
 RG 5160.6  
 DW 16.500 usec  
 DE 6.00 usec  
 TE 300.0 K  
 CNST2 145.0000000  
 CNST11 1.0000000  
 D1 4.00000000 sec  
 d20 0.00689655 sec  
 DELTA 0.0001184 sec  
 TD0 11111

===== CHANNEL f1 =====  
 NUC1 13C  
 P1 9.30 usec  
 p2 18.60 usec  
 PL1 5.00 dB  
 SFO1 125.7720754 MHz

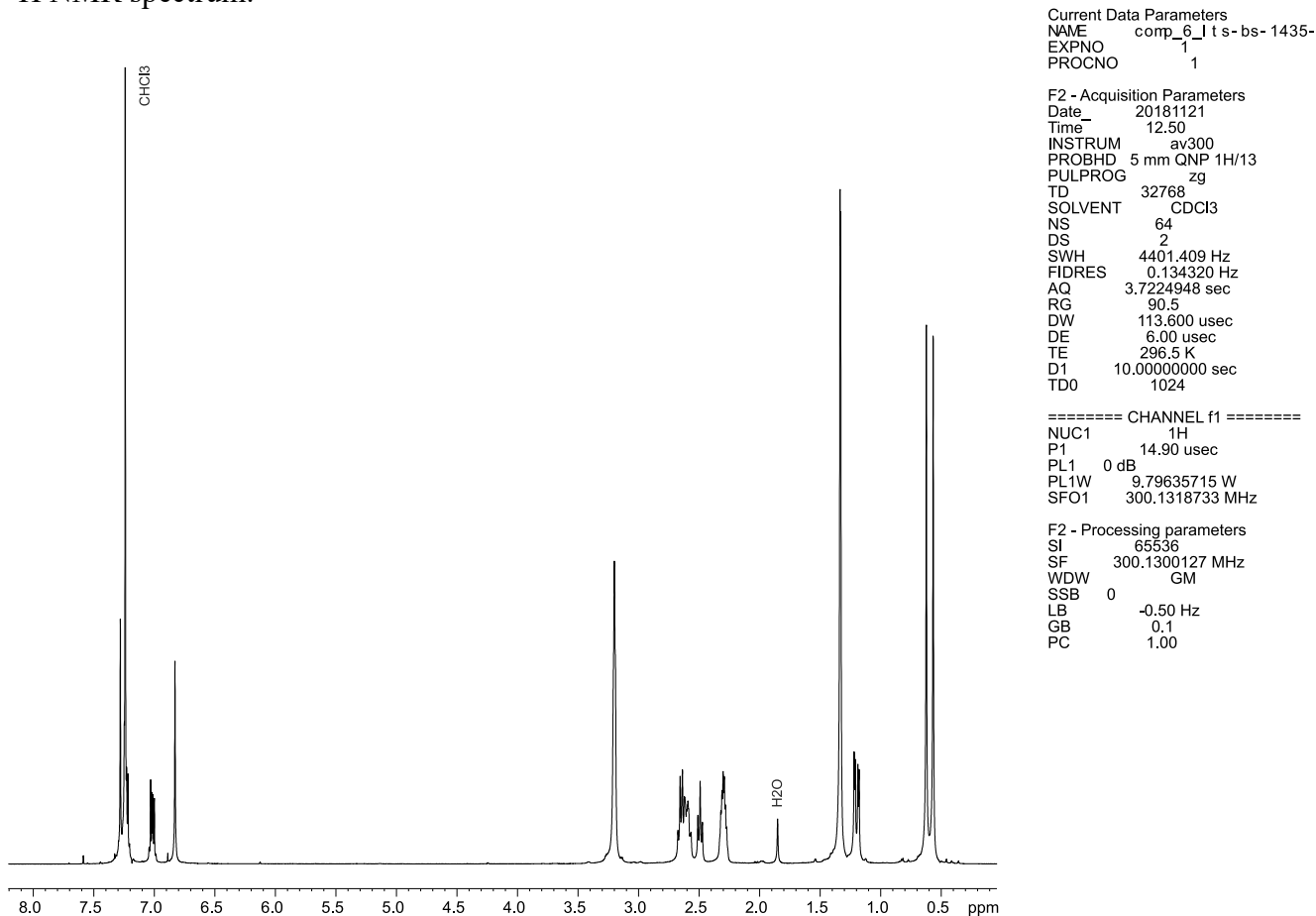
===== CHANNEL f2 =====  
 CPDPRG2 waltz16  
 NUC2 1H  
 PCPD2 76.50 usec  
 PL2 -3.00 dB  
 PL12 13.00 dB  
 SFO2 500.1320005 MHz

F2 - Processing parameters  
 SI 131072  
 SF 125.7578071 MHz  
 WDW EM  
 SSB 0  
 LB 3.00 Hz  
 GB 0  
 PC 1.00



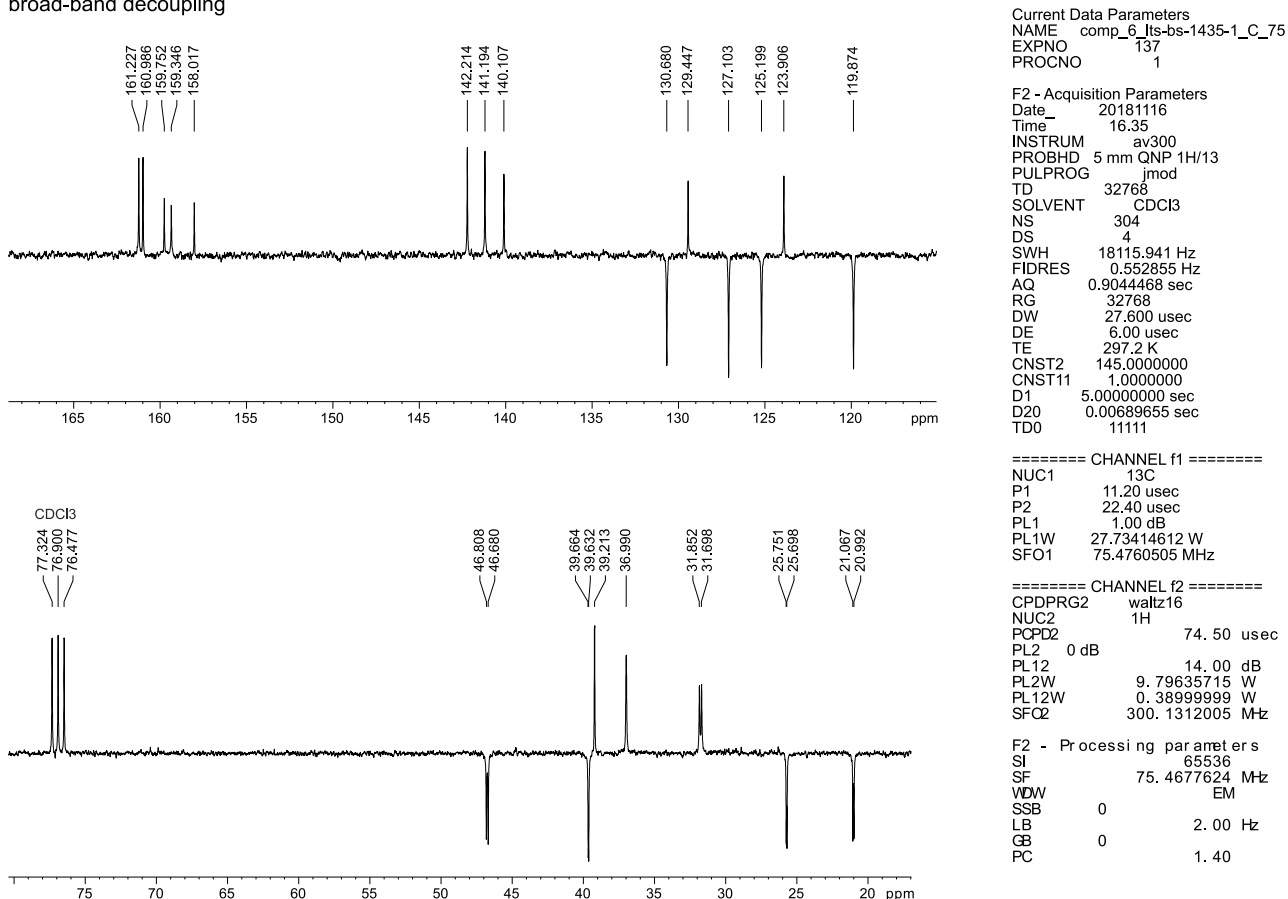
**N1,N2-bis((1R,3R,8R,10R)-2,2,9,9-tetramethyl-3,4,7,8,9,10-hexahydro-1H-1,3:8,10-dimethanocyclopenta[1,2-b:5,4-b']diquinolin-12(2H)-ylidene)benzene-1,2-diamine (6)**

<sup>1</sup>H NMR spectrum:



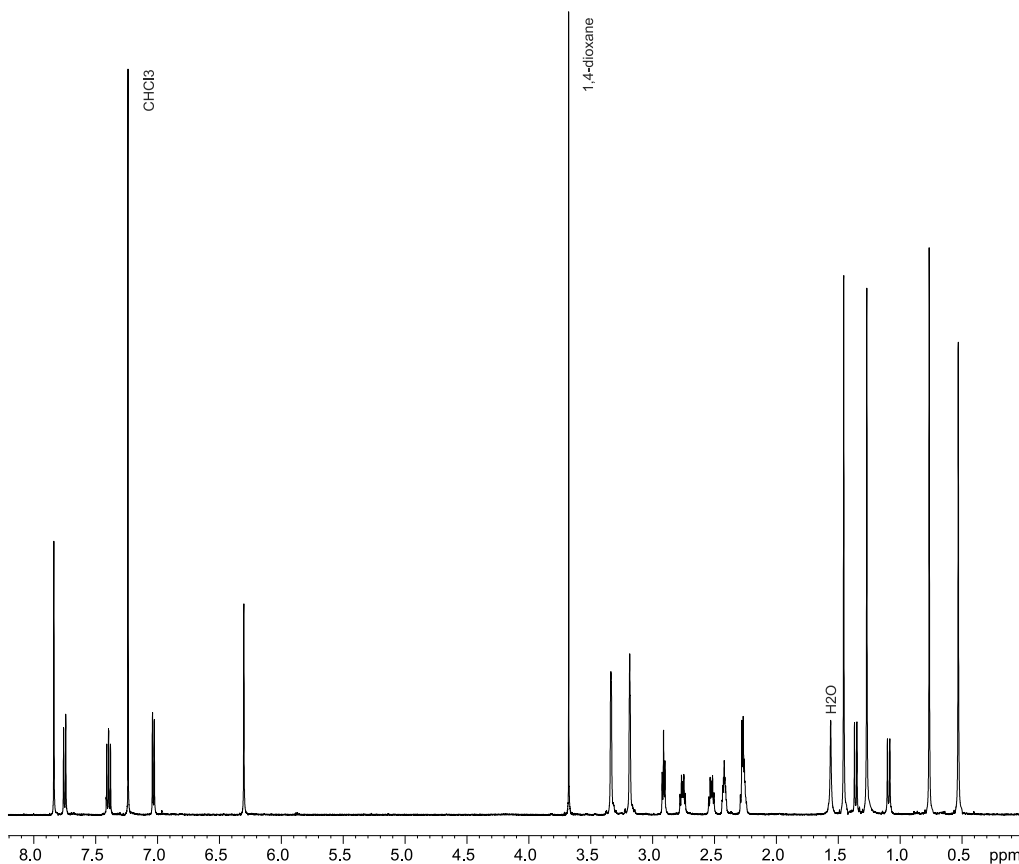
<sup>13</sup>C NMR spectrum:

J-modulation,  
broad-band decoupling



**N1,N5-bis((1R,3R,8R,10R)-2,2,9,9-tetramethyl-3,4,7,8,9,10-hexahydro-1H-1,3:8,10-dimethanocyclopenta[1,2-b:5,4-b']diquinolin-12(2H)-ylidene)naphthalene-1,5-diamine (7)**

<sup>1</sup>H NMR spectrum:



Current Data Parameters  
 NAME comp\_7\_1 t s- bs- 1509-  
 EXPNO 1  
 PROCNO 1

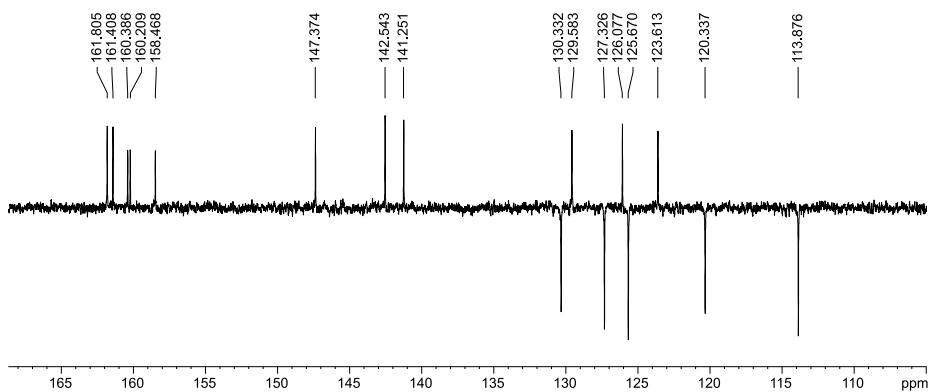
F2 - Acquisition Parameters  
 Date\_ 20190506  
 Time 15.47  
 INSTRUM spect  
 PROBHD 5 mm Multinucl  
 PULPROG zg30  
 TD 65536  
 SOLVENT CDCl3  
 NS 32  
 DS 2  
 SWH 10964.912 Hz  
 FIDRES 0.167311 Hz  
 AQ 2.9884915 sec  
 RG 512  
 DW 45.600 usec  
 DE 6.00 usec  
 TE 303.0 K  
 D1 5.00000000 sec  
 TD0 11111

===== CHANNEL f1 =====  
 NUC1 1H  
 P1 13.75 usec  
 PL1 -3.00 dB  
 SFO1 500.1347512 MHz

F2 - Processing parameters  
 SI 131072  
 SF 500.1300234 MHz  
 WDW no  
 SSB 0  
 LB 0 Hz  
 GB 0  
 PC 1.00

<sup>13</sup>C NMR spectrum:

J-modulation,  
 broad-band decoupling



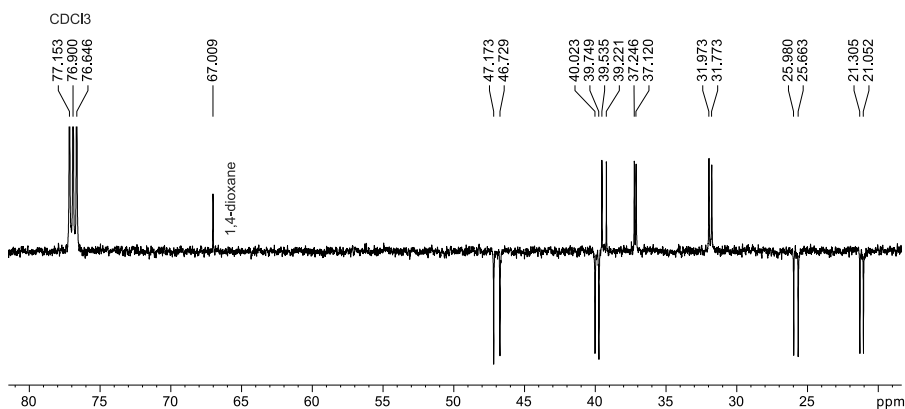
Current Data Parameters  
 NAME comp\_7\_1 t s- bs- 1509-19  
 EXPNO 137  
 PROCNO 1

F2 - Acquisition Parameters  
 Date\_ 20190506  
 Time 15.53  
 INSTRUM spect  
 PROBHD 5 mm Multinucl  
 PULPROG jmod  
 TD 65536  
 SOLVENT CDCl3  
 NS 1984  
 DS 4  
 SWH 30303.031 Hz  
 FIDRES 0.462388 Hz  
 AQ 1.0813940 sec  
 RG 5160.6  
 DW 16.500 usec  
 DE 6.00 usec  
 TE 303.0 K  
 CNST2 145.000000  
 CNST11 1.000000  
 D1 4.00000000 sec  
 d20 0.00689655 sec  
 DELTA 0.00001184 sec  
 TD0 11111

===== CHANNEL f1 =====  
 NUC1 13C  
 P1 9.30 usec  
 p2 18.60 usec  
 PL1 5.00 dB  
 SFO1 125.7720754 MHz

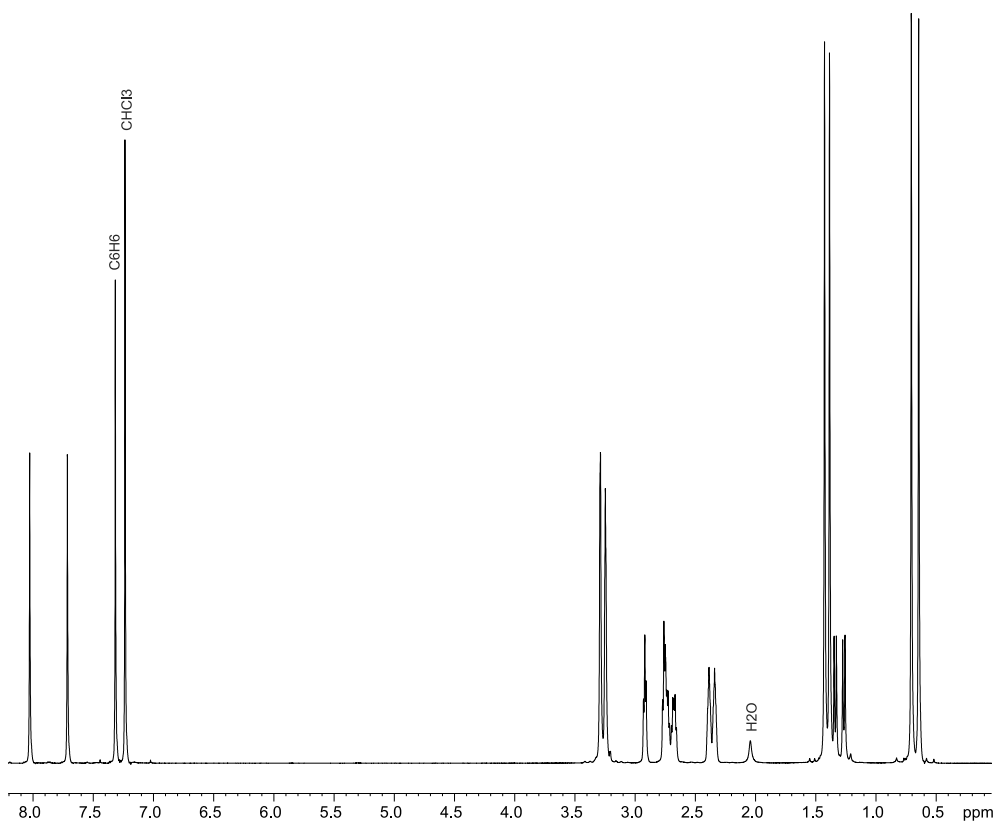
===== CHANNEL f2 =====  
 CPDPRG2 waltz16  
 NUC2 1H  
 PCPD2 76.50 usec  
 PL2 -3.00 dB  
 PL12 13.00 dB  
 SFO2 500.1320005 MHz

F2 - Processing parameters  
 SI 131072  
 SF 125.7577999 MHz  
 WDW EM  
 SSB 0  
 LB 2.00 Hz  
 GB 0  
 PC 1.00



**1,2-bis((1*R*,3*R*,8*R*,10*R*)-2,2,9,9-tetramethyl-3,4,7,8,9,10-hexahydro-1*H*-1,3:8,10-dimethanocyclopenta[1,2-*b*:5,4-*b'*]diquinolin-12(2*H*)-ylidene)hydrazine (8)**

<sup>1</sup>H NMR spectrum:



Current Data Parameters  
 NAME comp\_8\_1ts-bs-1430-  
 EXPNO 1  
 PROCNO 1

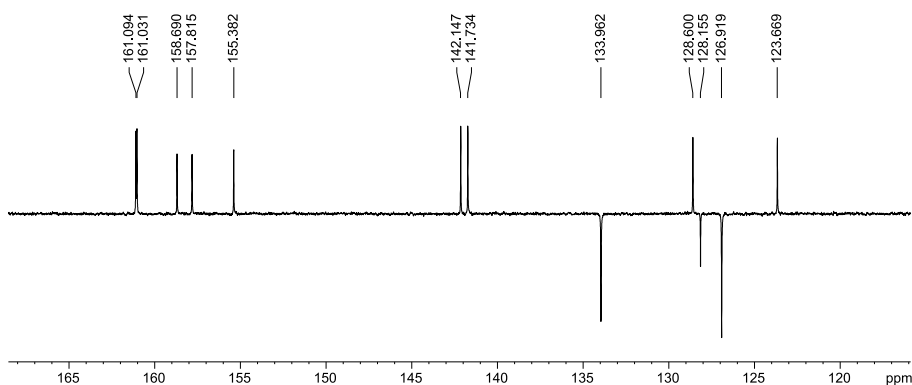
F2 - Acquisition Parameters  
 Date\_ 20181015  
 Time 14.34  
 INSTRUM spect  
 PROBHD 5 mm Multinucl  
 PULPROG zg30  
 TD 65536  
 SOLVENT CDCl3  
 NS 16  
 DS 2  
 SWH 10964.912 Hz  
 FIDRES 0.167311 Hz  
 AQ 2.9884915 sec  
 RG 101.6  
 DW 45.600 usec  
 DE 6.00 usec  
 TE 300.0 K  
 D1 5.00000000 sec  
 TD0 11111

===== CHANNEL f1 =====  
 NUC1 1H  
 P1 13.75 usec  
 PL1 -3.00 dB  
 SFO1 500.1347512 MHz

F2 - Processing parameters  
 SI 65536  
 SF 500.1300265 MHz  
 WDW EM  
 SSB 0  
 LB 0.30 Hz  
 GB 0  
 PC 1.00

<sup>13</sup>C NMR spectrum:

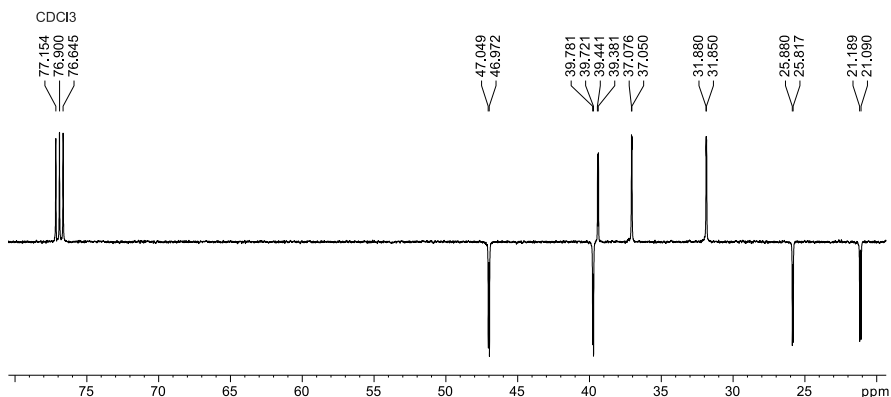
J-modulation,  
 broad-band decoupling



Current Data Parameters  
 NAME comp\_8\_1ts-bs-1430-1  
 EXPNO 137  
 PROCNO 1

F2 - Acquisition Parameters  
 Date\_ 20181015  
 Time 13.49  
 INSTRUM spect  
 PROBHD 5 mm Multinucl  
 PULPROG jmod  
 TD 65536  
 SOLVENT CDCl3  
 NS 516  
 DS 4  
 SWH 30303.031 Hz  
 FIDRES 0.462388 Hz  
 AQ 1.0813940 sec  
 RG 3251  
 DW 16.500 usec  
 DE 6.00 usec  
 TE 300.0 K  
 CNST2 145.0000000  
 CNST11 1.0000000  
 D1 4.00000000 sec  
 d20 0.00689655 sec  
 DELTA 0.00001184 sec  
 TD0 11111

===== CHANNEL f1 =====  
 NUC1 13C  
 P1 9.30 usec  
 p2 18.60 usec  
 PL1 5.00 dB  
 SFO1 125.7720754 MHz



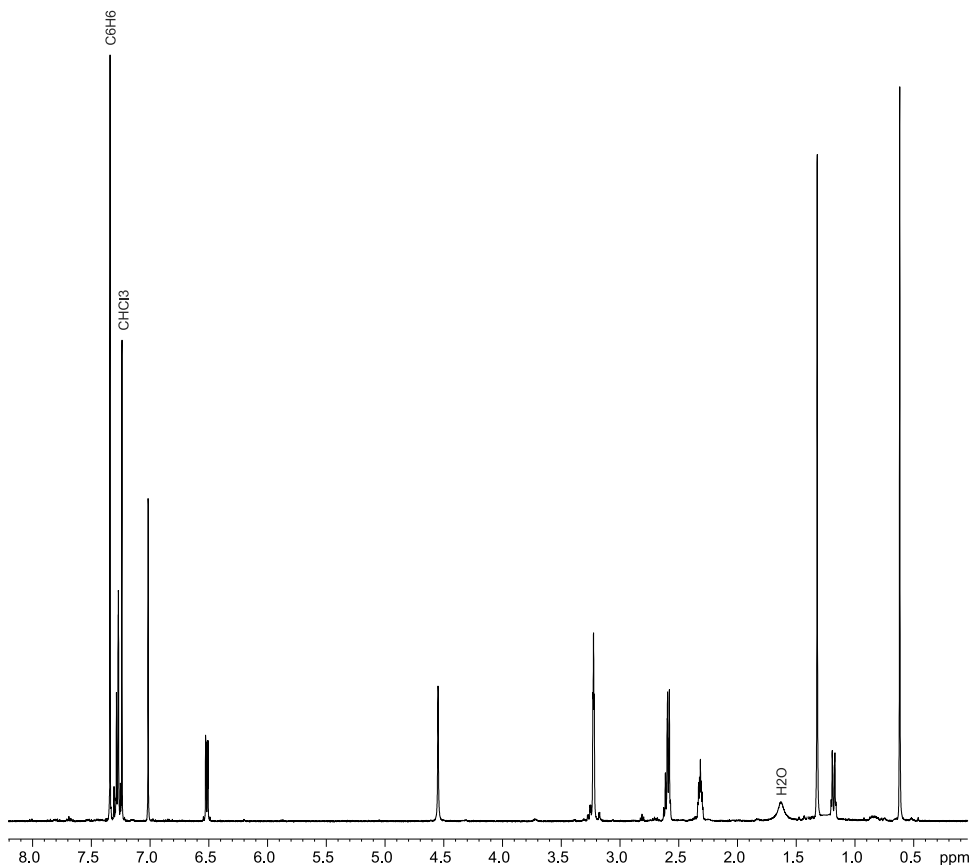
===== CHANNEL f2 =====  
 CPDPRG2 waltz16  
 NUC2 1H  
 PCPD2 76.50 usec  
 PL2 -3.00 dB  
 PL12 13.00 dB  
 SFO2 500.1320005 MHz

F2 - Processing parameters  
 SI 131072  
 SF 125.7578122 MHz  
 WDW EM  
 SSB 0  
 LB 2.00 Hz  
 GB 0  
 PC 1.00



**(1'R,3'R,8'R,10'R)-2',2',9',9'-tetramethyl-1',2',3',4',7',8',9',10'-octahydro-1H,3H-spiro[perimidine-2,12'-[1,3:8,10]dimethanocyclopenta[2,1-b:3,4-b']diquinoline] (9)**

<sup>1</sup>H NMR spectrum:



Current Data Parameters  
 NAME comp\_9\_11ts-bs-1505-  
 EXPNO 1  
 PROCNO 1

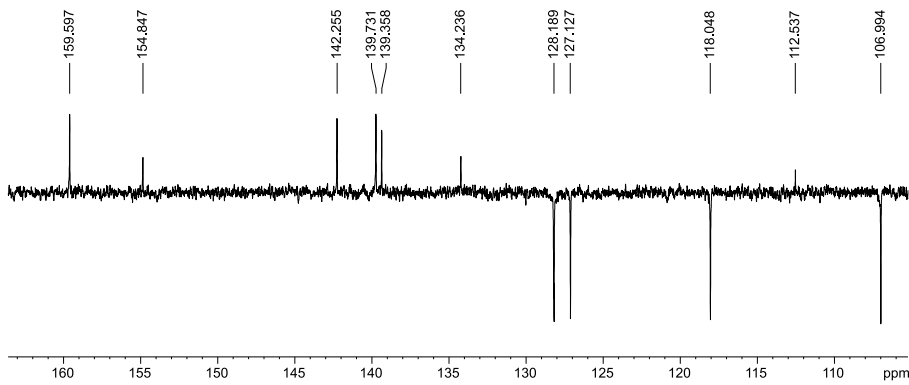
F2 - Acquisition Parameters  
 Date 20190417  
 Time 17.51  
 INSTRUM spect  
 PROBHD 5 mm QNP 1H/13  
 PULPROG zg30  
 TD 32000  
 SOLVENT CDCl3  
 NS 16  
 DS 2  
 SWH 8802.817 Hz  
 FIDRES 0.275088 Hz  
 AQ 1.8176500 sec  
 RG 203  
 DW 56.800 usec  
 DE 6.50 usec  
 TE 293.4 K  
 D1 5.00000000 sec  
 TD0 11111

===== CHANNEL f1 =====  
 NUC1 1H  
 P1 13.70 usec  
 PL1 0 dB  
 PL1W 9.52005005 W  
 SFO1 400.1340013 MHz

F2 - Processing parameters  
 SI 65536  
 SF 400.1300184 MHz  
 WDW GM  
 SSB 0  
 LB -0.50 Hz  
 GB 0.3  
 PC 1.40

<sup>13</sup>C NMR spectrum:

J-modulation,  
 broad-band decoupling



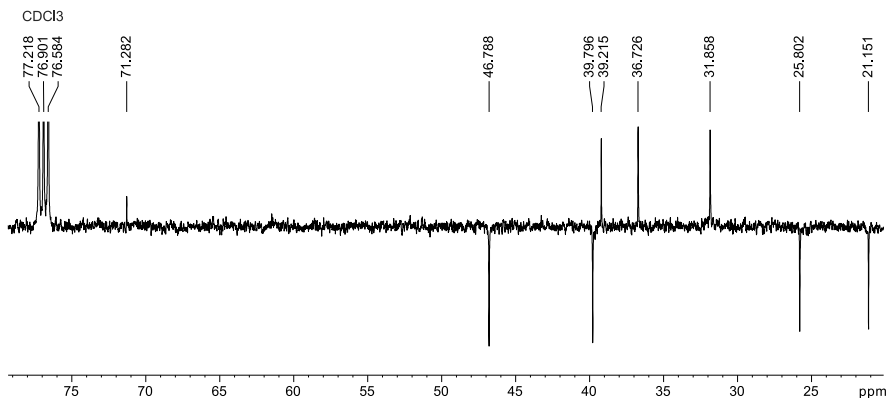
Current Data Parameters  
 NAME comp\_9\_11ts-bs-1505-8  
 EXPNO 137  
 PROCNO 1

F2 - Acquisition Parameters  
 Date 20190418  
 Time 8.11  
 INSTRUM spect  
 PROBHD 5 mm QNP 1H/13  
 PULPROG jmod  
 TD 65536  
 SOLVENT CDCl3  
 NS 1232  
 DS 2  
 SWH 24038.461 Hz  
 FIDRES 0.366798 Hz  
 AQ 1.3631988 sec  
 RG 203  
 DW 20.800 usec  
 DE 6.50 usec  
 TE 293.3 K  
 CNST2 145.0000000  
 CNST11 1.0000000  
 D1 5.00000000 sec  
 D20 0.00689655 sec  
 TD0 11111

===== CHANNEL f1 =====  
 NUC1 13C  
 P1 9.60 usec  
 P2 19.20 usec  
 PL1 0 dB  
 PL1W 36.42235184 W  
 SFO1 100.6243395 MHz

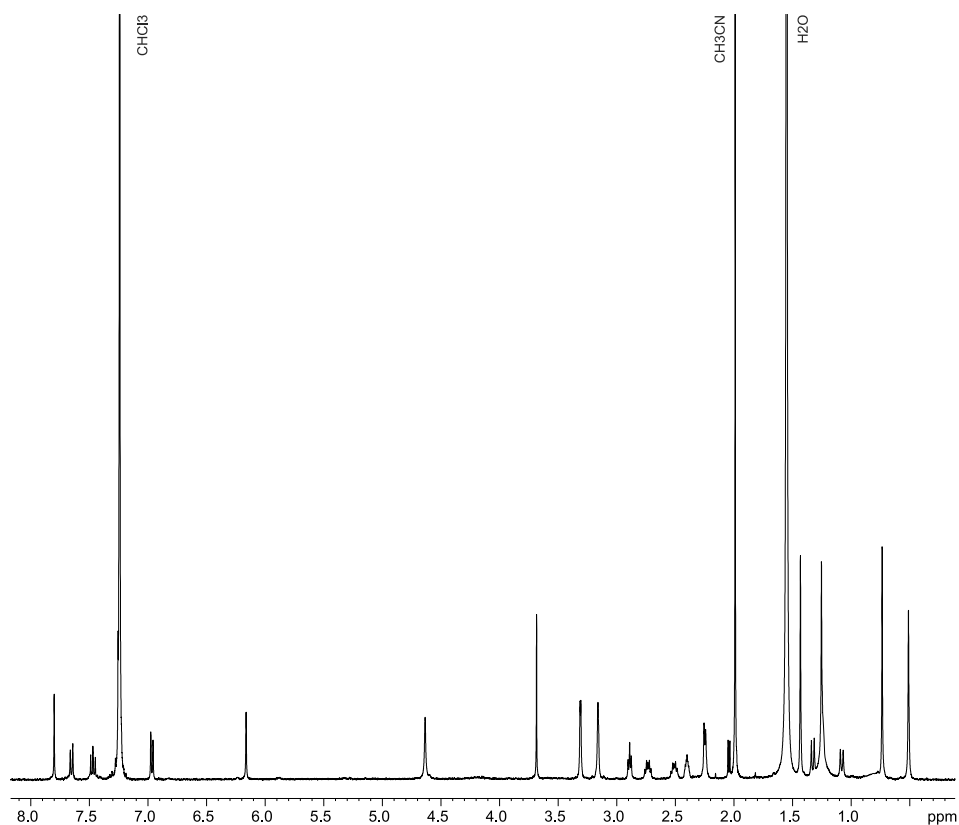
===== CHANNEL f2 =====  
 CPDPRG2 waltz16  
 NUC2 1H  
 PCPD2 86.00 usec  
 PL2 0 dB  
 PL12 16.00 dB  
 PL2W 9.52005005 W  
 PL12W 0.23913284 W  
 SFO2 400.1316005 MHz

F2 - Processing parameters  
 SI 131072  
 SF 100.6127826 MHz  
 WDW EM  
 SSB 0  
 LB 2.00 Hz  
 GB 0  
 PC 1.40



**6-chloro-N1-((1R,3R,8R,10R)-2,2,9,9-tetramethyl-3,4,7,8,9,10-hexahydro-1H-1,3:8,10-dimethanocyclopenta[1,2-b:5,4-b']diquinolin-12(2H)-ylidene)naphthalene-1,5-diamine (11)**

<sup>1</sup>H NMR spectrum:



Current Data Parameters  
NAME comp\_11\_1 t s- esv0407  
EXPNO 1  
PROCNO 1

F2 - Acquisition Parameters  
Date\_ 20190628  
Time 15.31  
INSTRUM spect  
PROBHD 5 mm QNP 1H/13  
PULPROG zg30  
TD 32000  
SOLVENT CDCl3  
NS 200  
DS 2  
SWH 8802.817 Hz  
FIDRES 0.275088 Hz  
AQ 1.8176500 sec  
RG 203  
DW 56.800 usec  
DE 6.50 usec  
TE 294.3 K  
D1 5.0000000 sec  
TD0 11111

===== CHANNEL f1 =====  
NUC1 1H  
P1 13.70 usec  
PL1 0 dB  
PL1W 9.52005005 W  
SFO1 400.1340013 MHz

F2 - Processing parameters  
SI 131072  
SF 400.1300179 MHz  
WDW EM  
SSB 0  
LB 0.30 Hz  
GB 0  
PC 1.00