

Supporting Information

Inuloxin E, a New Seco-Eudesmanolide Isolated from *Dittrichia viscosa*, Stimulating *Orobanche cumana* Seed Germination

Marco Masi ¹, Mónica Fernández-Aparicio ^{2,*}, Roukia Zatout ^{1,3}, Angela Boari ⁴, Alessio Cimmino ^{1,*} and Antonio Evidente ¹

¹ Dipartimento di Scienze Chimiche, Università di Napoli Federico II, Complesso Universitario Monte S. Angelo, Via Cintia 4, 80126 Napoli, Italy; marco.masi@unina.it (M.M.); roukia.zatout@umc.edu.dz (R.Z.); evident@unina.it (A.E.)

² Institute for Sustainable Agriculture, CSIC, Apdo. 4084, 14080 Córdoba, Spain

³ Department of Applied Biology, University of Frères Mentouri Constantine 1, Route Ain El Bey 25000, Constantine, Algeria

⁴ Institute of Food Production Sciences, National Research Council, Via Amendola 122/O, 70125 Bari, Italy; angela.boari@ispa.cnr.it

* Correspondence: monica.fernandez@ias.csic.es (M.F.-A.); alessio.cimmino@unina.it (A.C.); Tel.: +34-957499170 (M.F.-A.); +39-0812532126 (A.C.)

Academic Editors: Stefano Dall'Acqua and Vincenzo De Feo

Received: 26 July 2019; Accepted: 24 September 2019; Published: 25 September 2019

Brief Statement in nonsentence format listing the content of the material supplied

The content of the material supplied as Supporting Information is reported in the following list:

Supporting Information List

Spectra 1. ¹H NMR spectrum of inuloxin E (1) (CDCl₃, 400 MHz)

Spectra 2. ¹³C NMR spectrum of inuloxin E (1) (CDCl₃, 100 MHz)

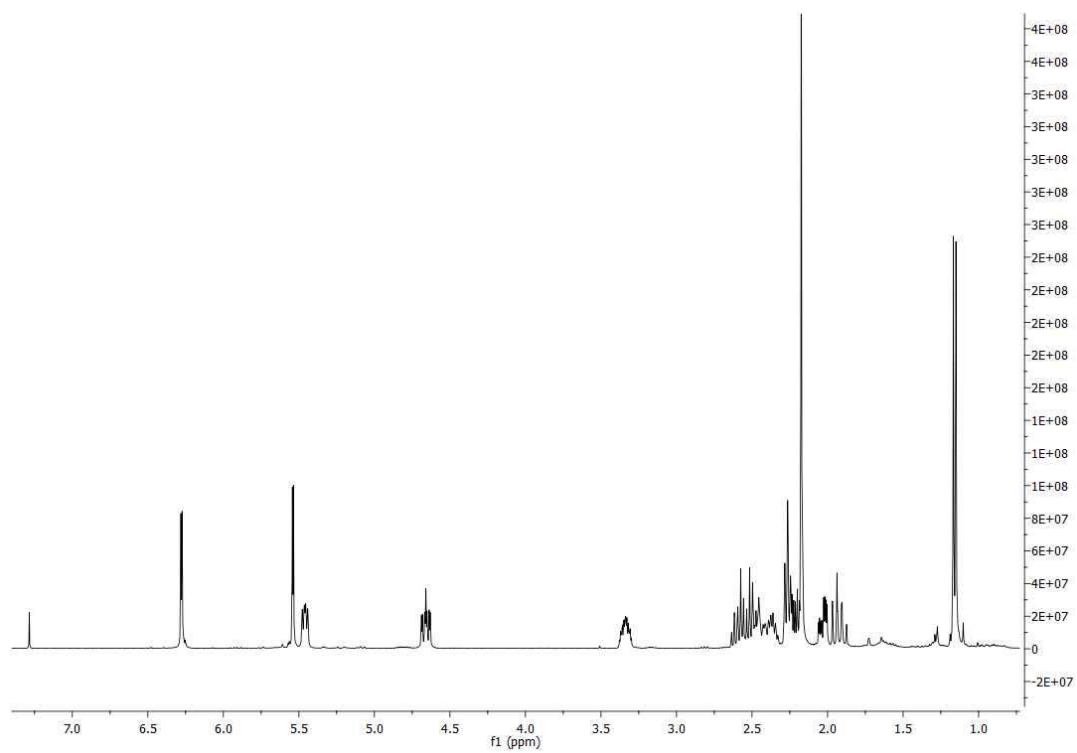
Spectra 3. HSQC spectrum of inuloxin E (1) (CDCl₃, 400/100 MHz)

Spectra 4. HMBC spectrum of inuloxin E (1) (CDCl₃, 400/100 MHz)

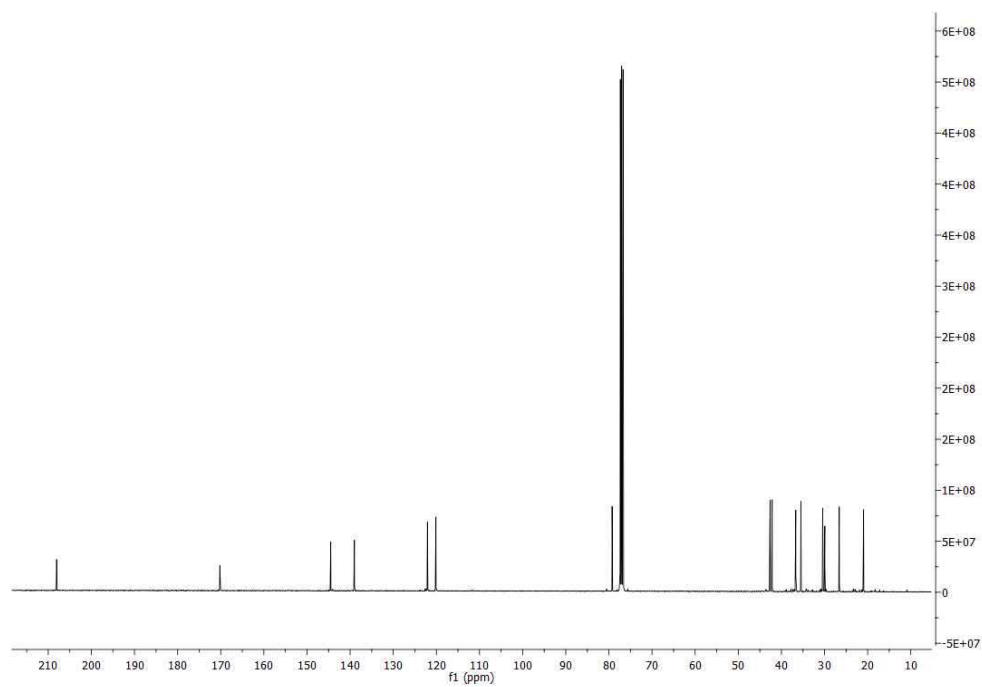
Spectra 5. COSY spectrum of inuloxin E (1) (CDCl₃, 100 MHz)

Spectra 6. NOESY spectrum of inuloxin E (1) (CDCl₃, 100 MHz)

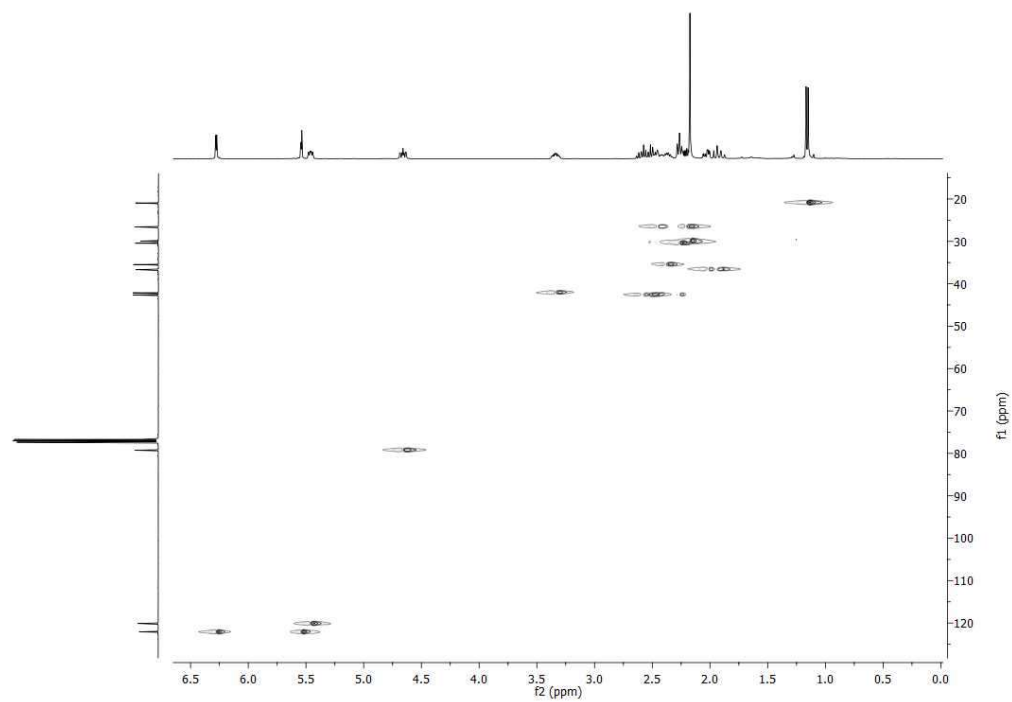
Spectra 7. IR spectrum of inuloxin E (1)



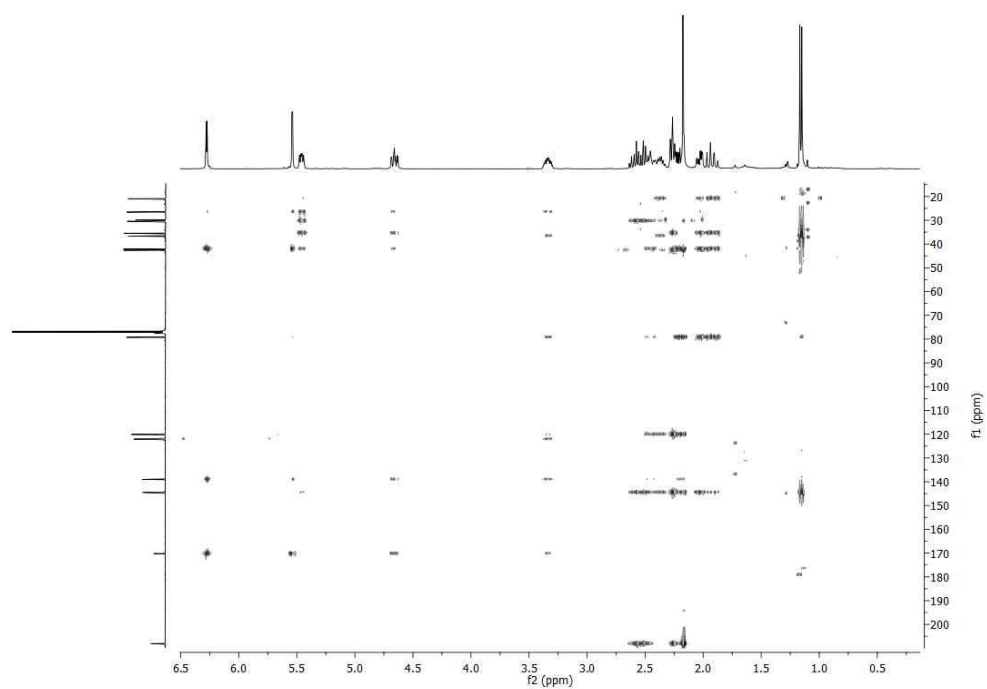
Spectra 1. ^1H NMR spectrum of inuloxin E (1) (CDCl_3 , 400 MHz).



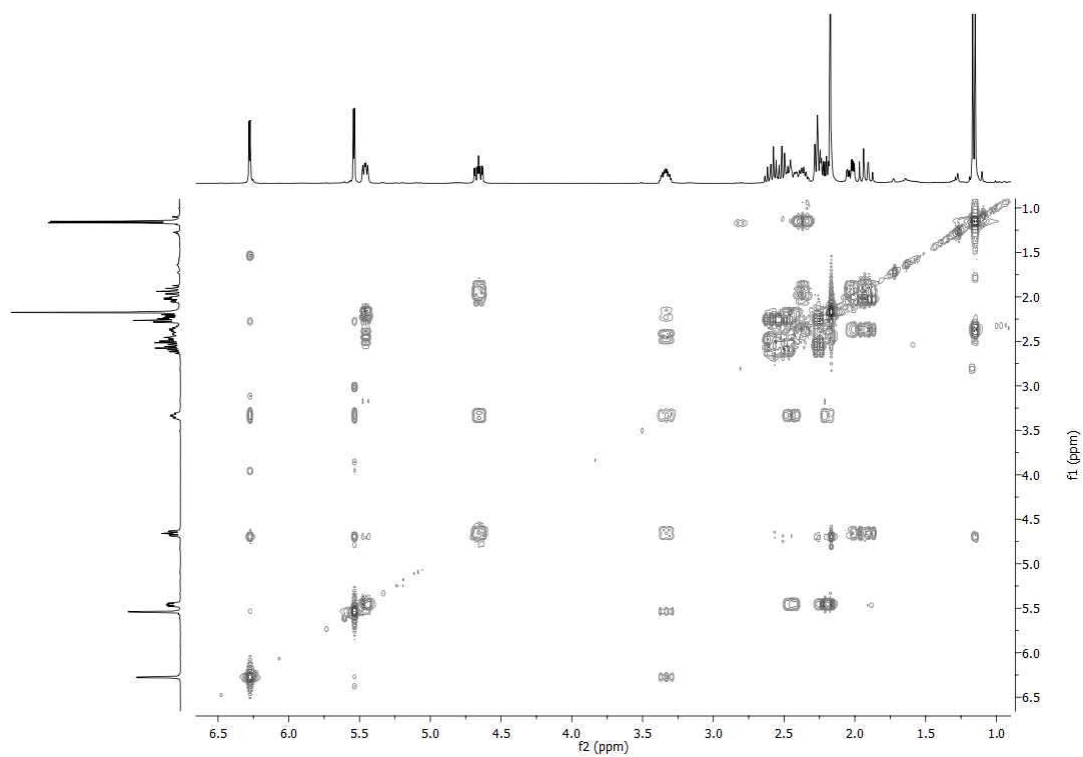
Spectra 2. ^{13}C NMR spectrum of inuloxin E (1) (CDCl_3 , 100 MHz).



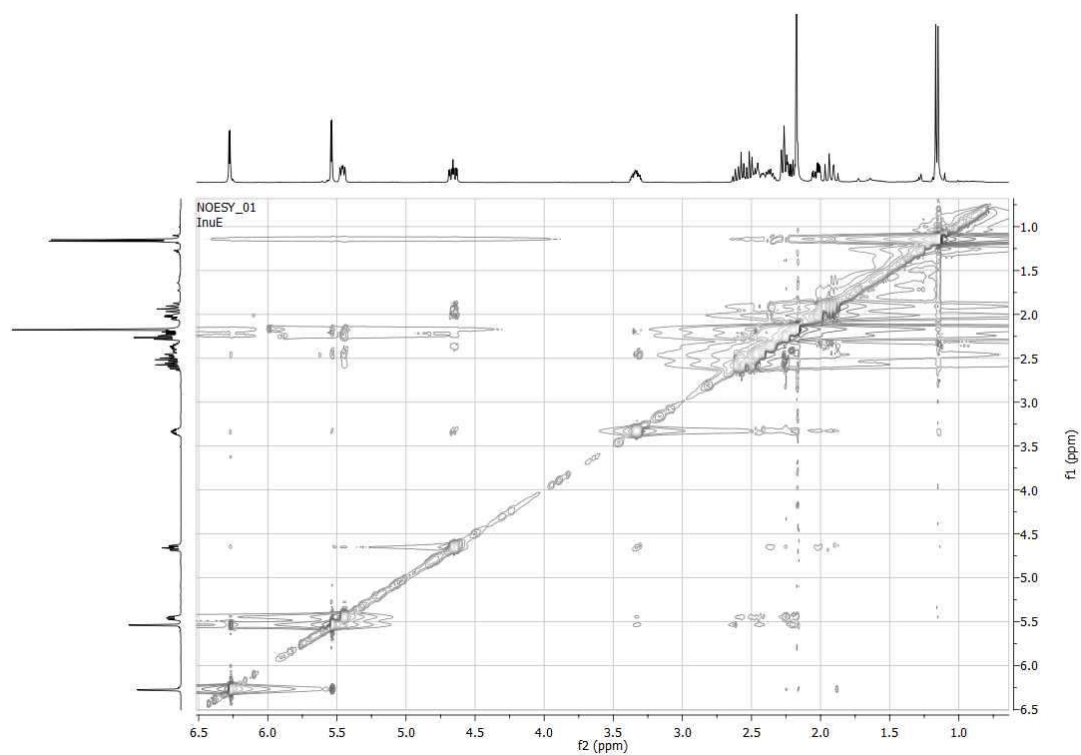
Spectra 3. HSQC spectrum of inuloxin E (**1**) (CDCl₃, 400/100 MHz).



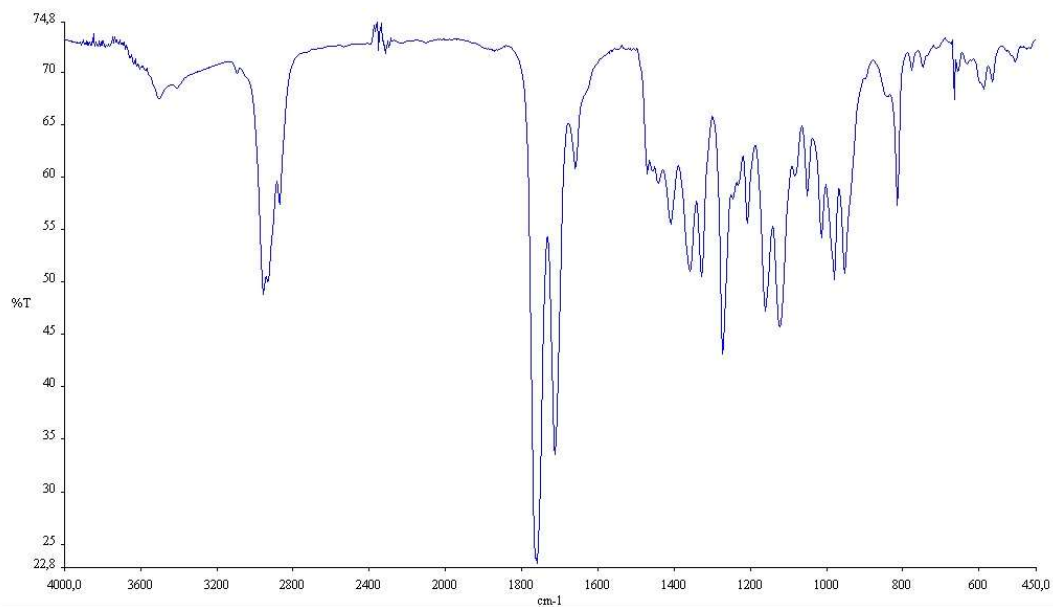
Spectra 4. HMBC spectrum of inuloxin E (**1**) (CDCl₃, 400/100 MHz).



Spectra 5. COSY spectrum of inuloxin E (1) (CDCl₃, 100 MHz).



Spectra 6. NOESY spectrum of inuloxin E (**1**) (CDCl₃, 100 MHz).



Spectra 7. IR spectrum of inuloxin E (1).