

**Cyclic peptides acting as allosteric inhibitors of human thymidylate synthase and cancer cell growth.**

Salvatore Pacifico,<sup>1</sup> Matteo Santucci,<sup>2</sup> Rosaria Luciani,<sup>2</sup> Puneet Saxena<sup>2</sup>, Pasquale Linciano,<sup>2</sup> Glauco Ponterini,<sup>2</sup> Domenico D'Arca,<sup>3</sup> Gaetano Marverti,<sup>3</sup> Remo Guerrini,<sup>1</sup> M. Paola Costi<sup>2</sup>

<sup>1</sup> *Department of Chemical and Pharmaceutical Sciences, University of Ferrara, via Fossato di Mortara 17-19, 44100 Ferrara, Italy.*

<sup>2</sup> *Department of Life Sciences, University of Modena and Reggio Emilia, via Campi, 103, 41125 Modena, Italy.*

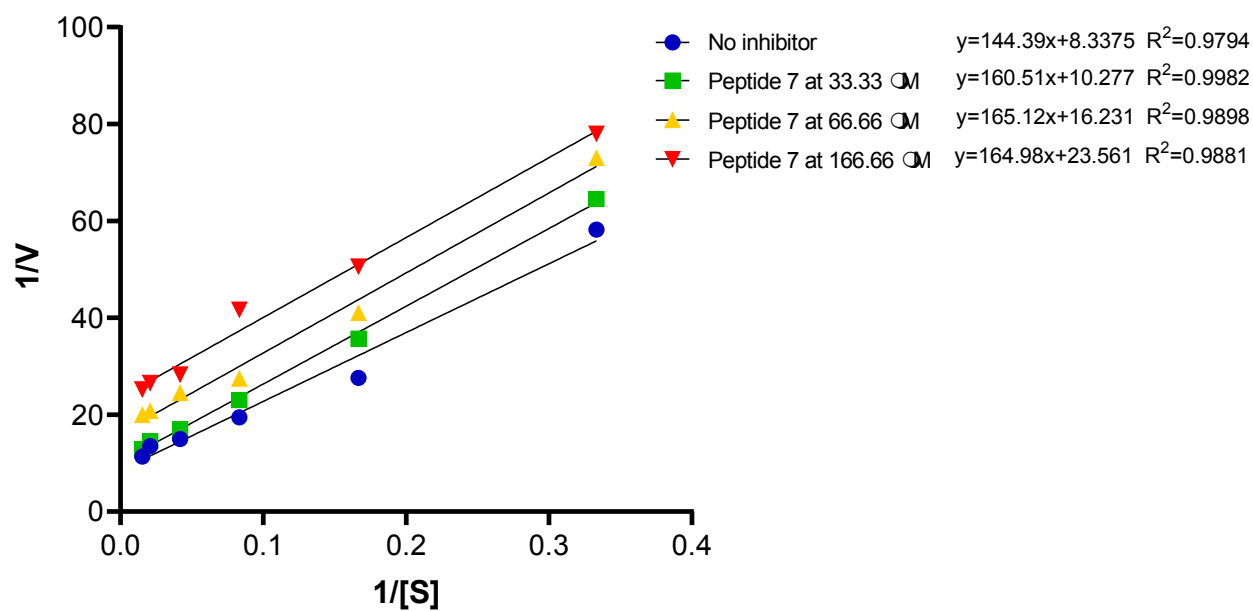
<sup>3</sup> *Department of Biomedical Sciences, Metabolic and Neural Sciences, University of Modena and Reggio Emilia, via Campi 287, 41125 Modena, Italy.*

**TABLE OF CONTENT**

**Figure SI-1.** Allosteric inhibition profile for peptide **7**. SI-2

Mass spectra and analytical HPLC chromatograms of the final cyclic peptides. SI-3

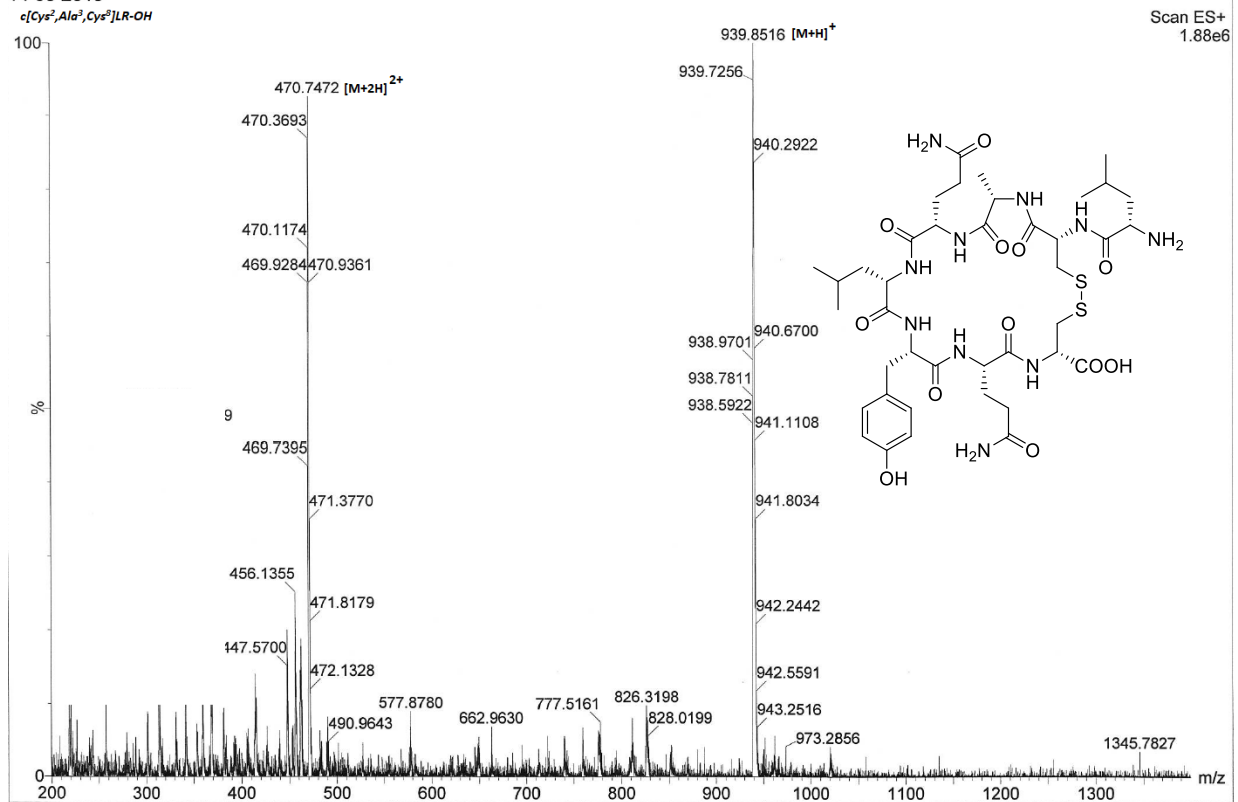
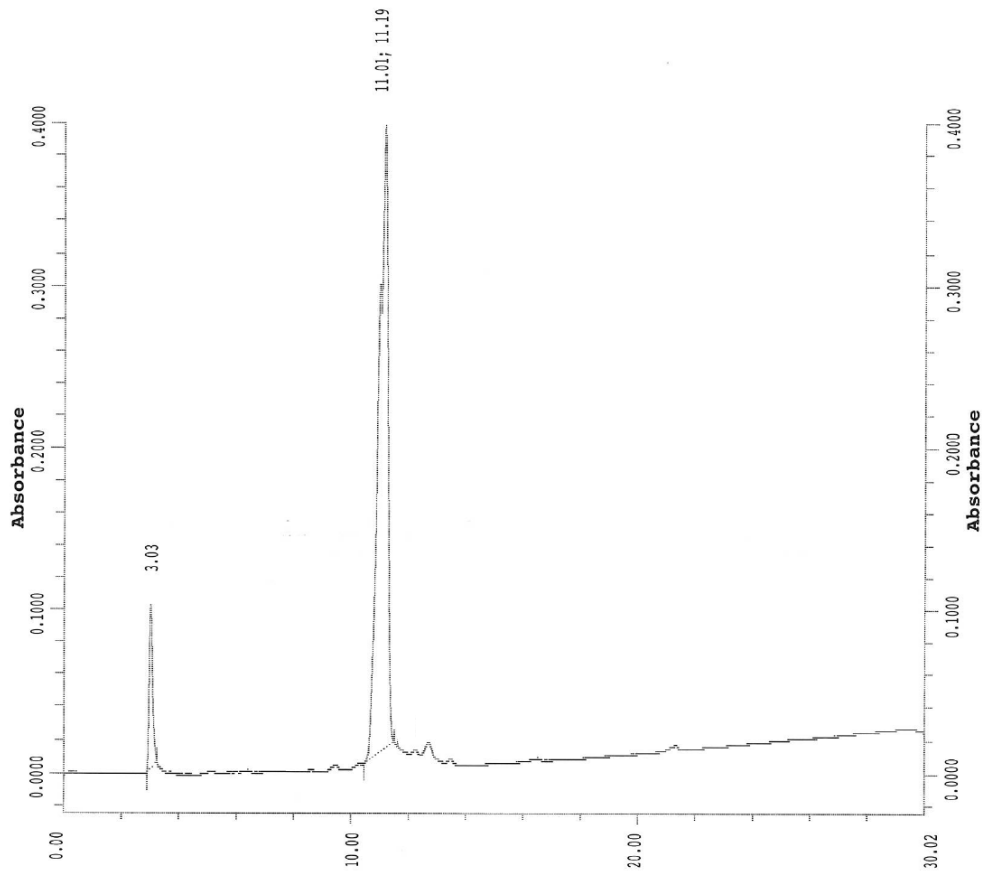
**Figure SI-1.** Allosteric inhibition profile for peptide 7;  $V$  = initial rate measured as the change in absorbance at 340 nm per minute;  $[S] = [\text{MTHF}]/\mu\text{M}$ .





## Leu-c[Cys-Ala-Gln-Leu-Tyr-Gln-Cys] (2)

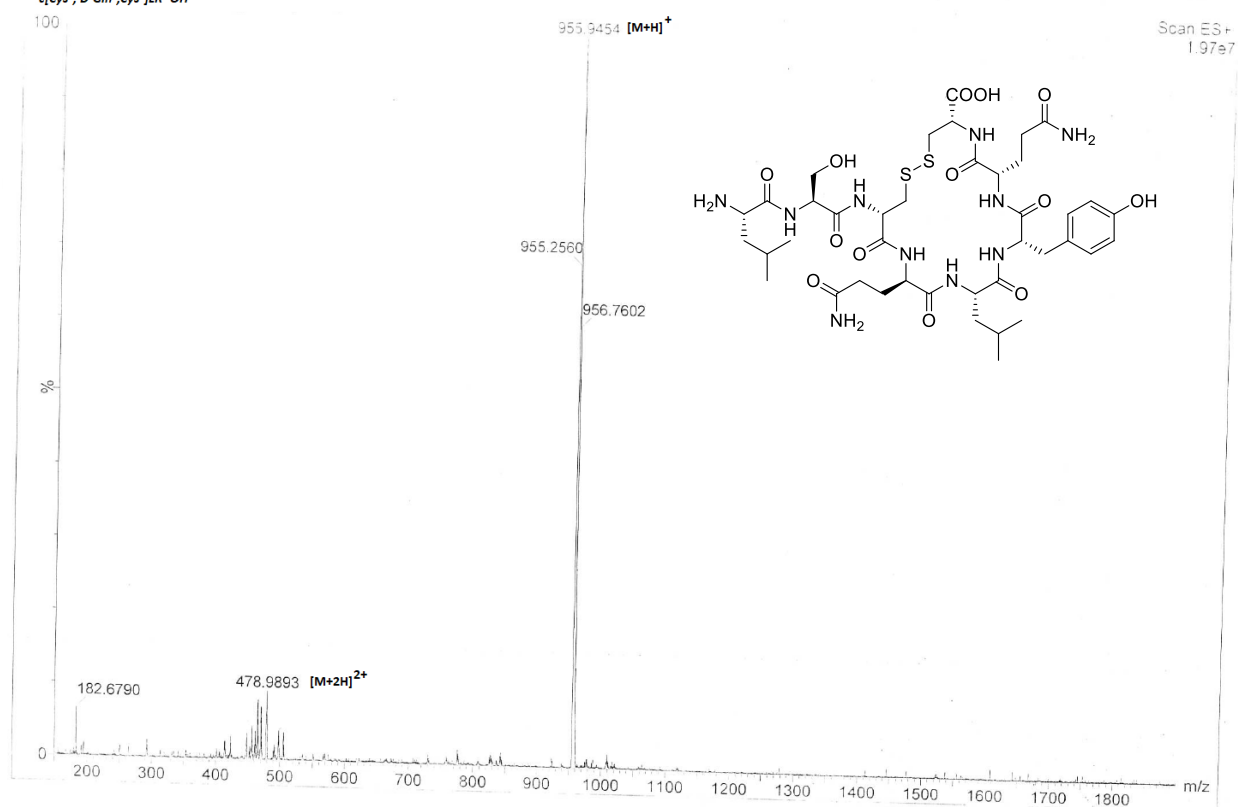
14 05 2019

c[Cys<sup>2</sup>,Ala<sup>3</sup>,Cys<sup>8</sup>]LR-OHc[Cys<sup>2</sup>,Ala<sup>3</sup>,Cys<sup>8</sup>]LR-OH

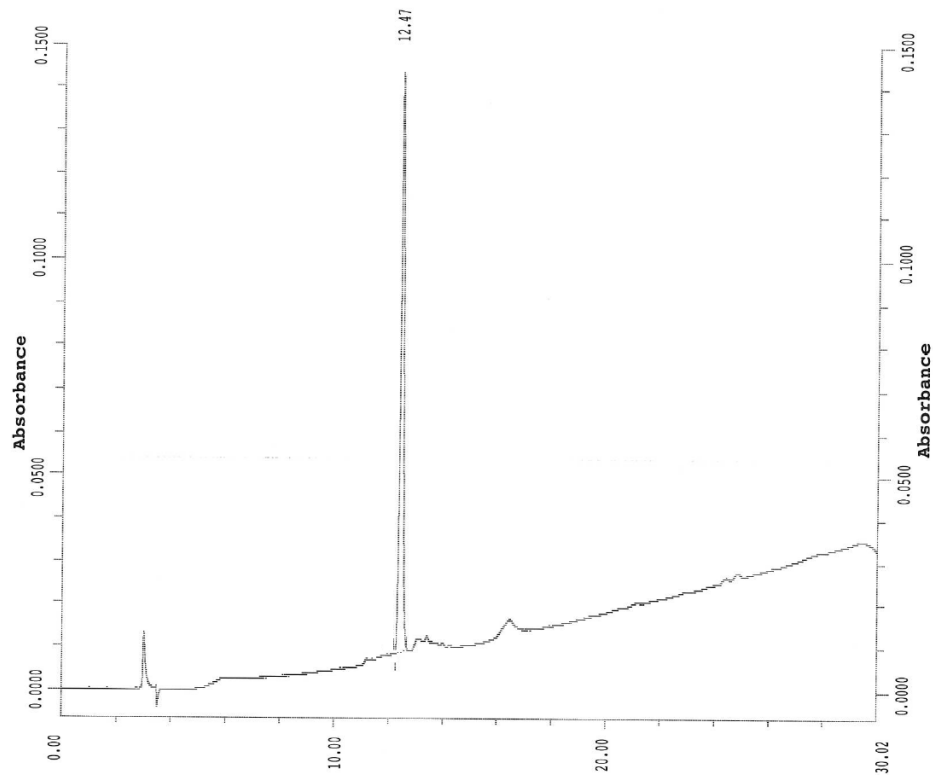


## Leu-Ser-c[Cys- D-Gln-Leu-Tyr-Gln-Cys] (4)

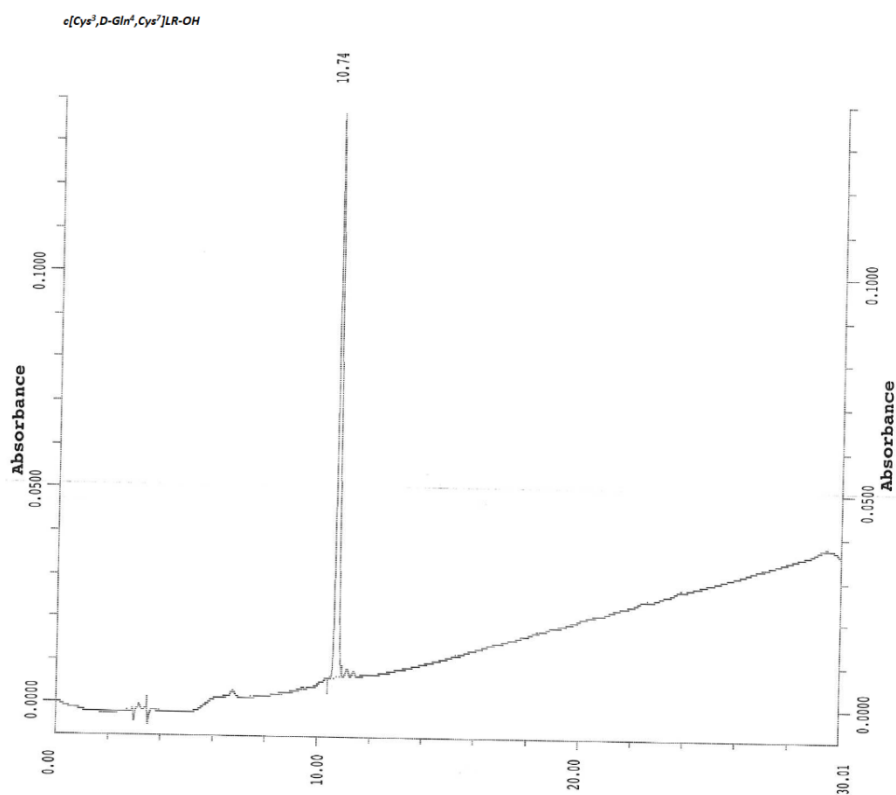
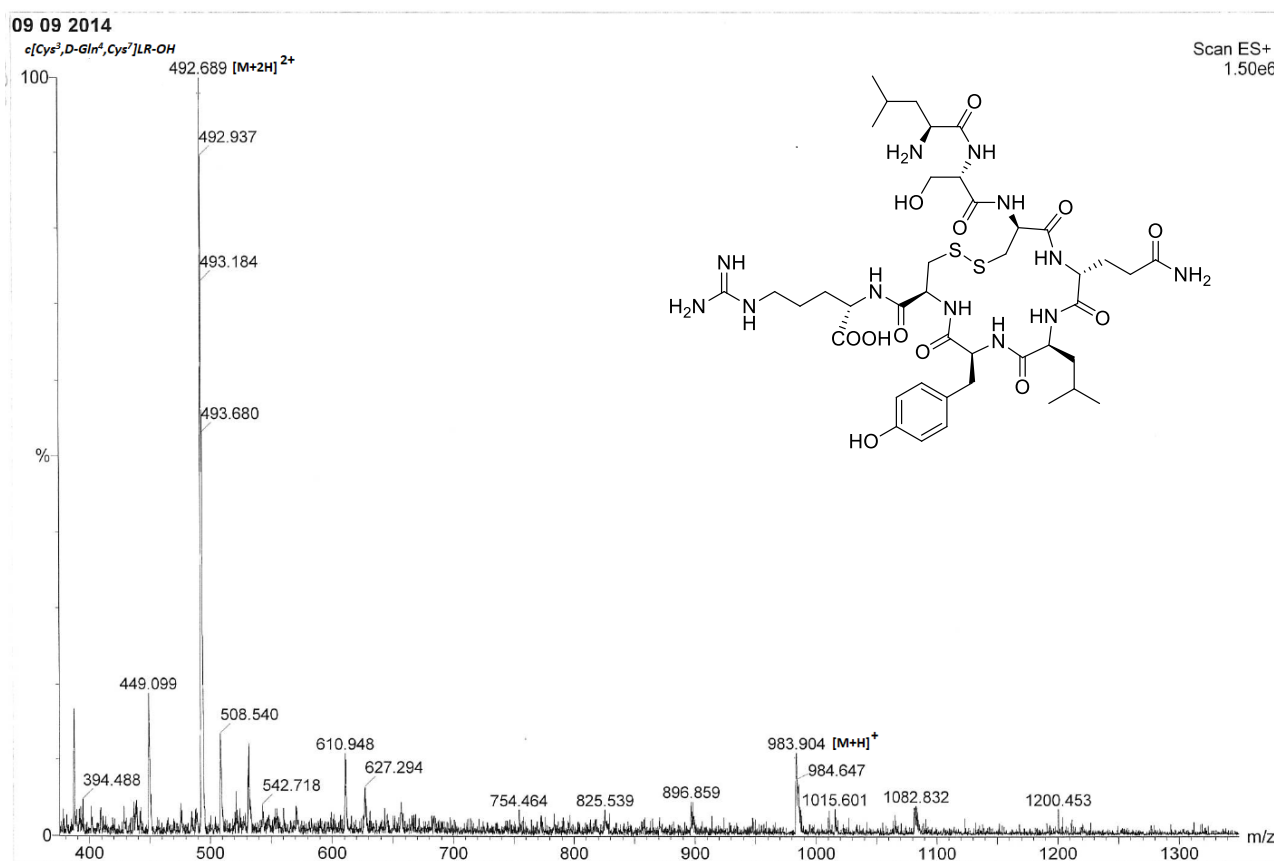
27 05 2019

c[Cys<sup>2</sup>, D-Gln<sup>4</sup>, Cys<sup>8</sup>]LR-OH

c[Cys2, Pro3, Cys8]LR-OH



## Leu-Ser-c[Cys- D-Gln-Leu-Tyr-Cys-]Arg (5)













c[Cys-Ser-Pro-Gln-Leu-Tyr-Gln-Cys] (10)

