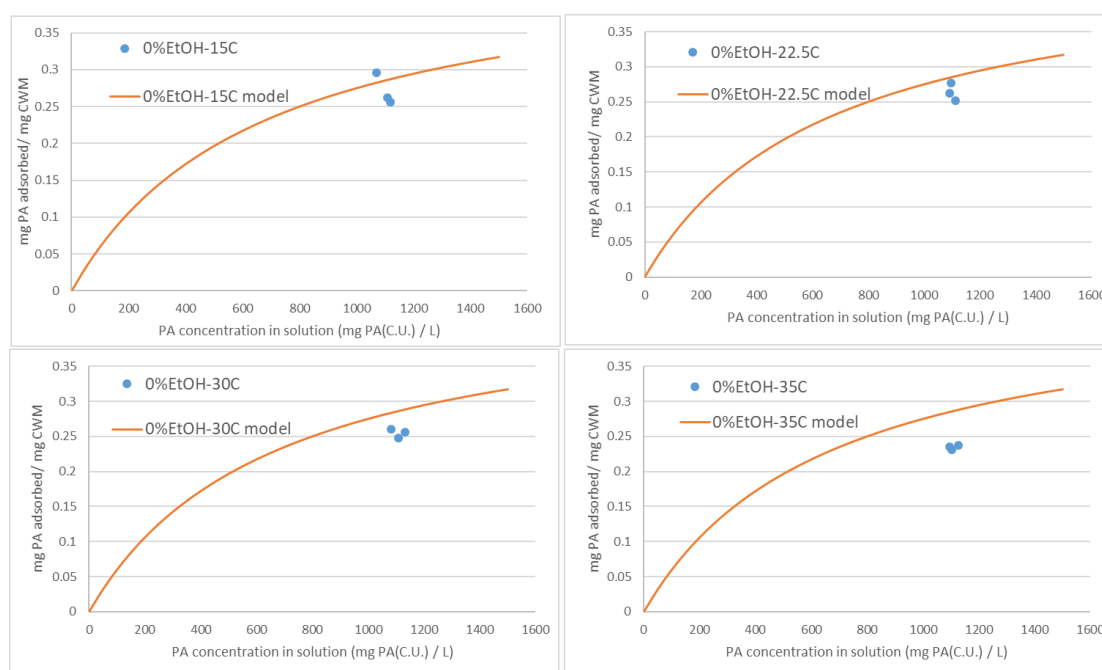
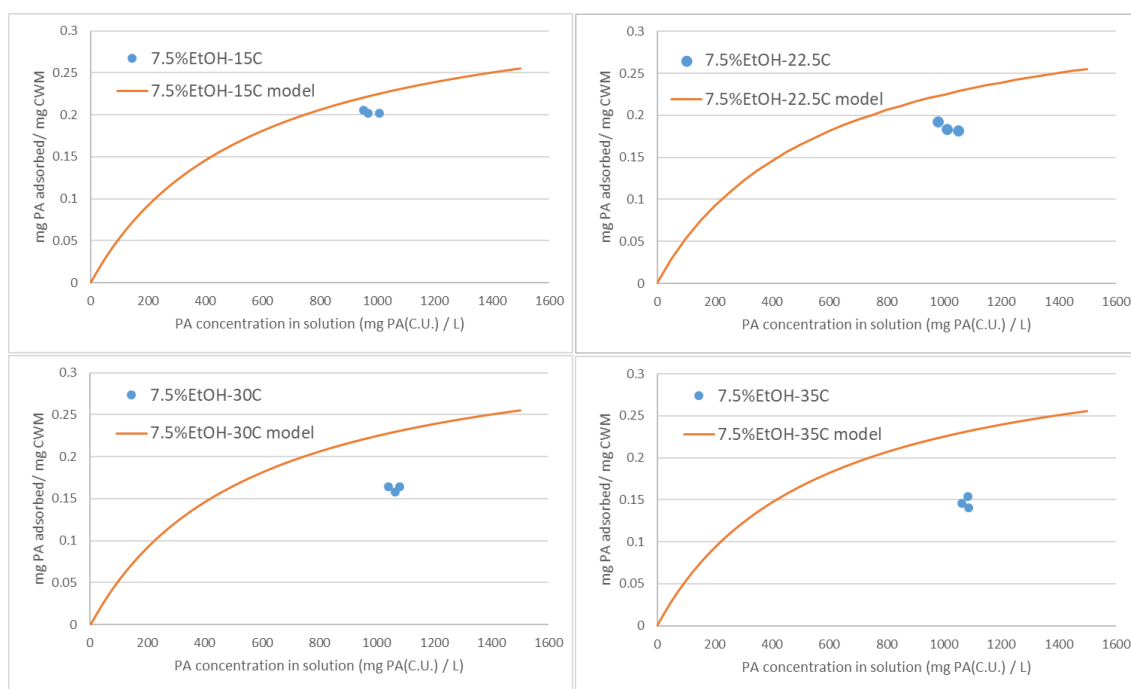


# Heat-Dependent Desorption of Proanthocyanidins from Grape-Derived Cell Wall Material under Variable Ethanol Concentrations in Model Wine Systems

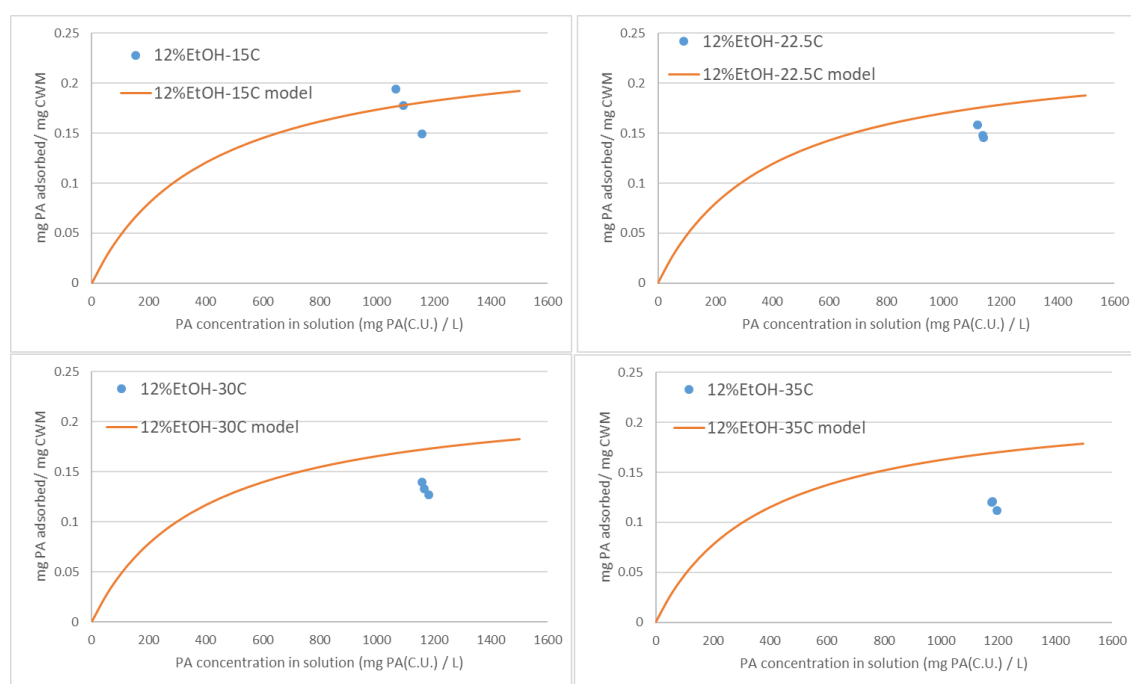
## Supplementary Material



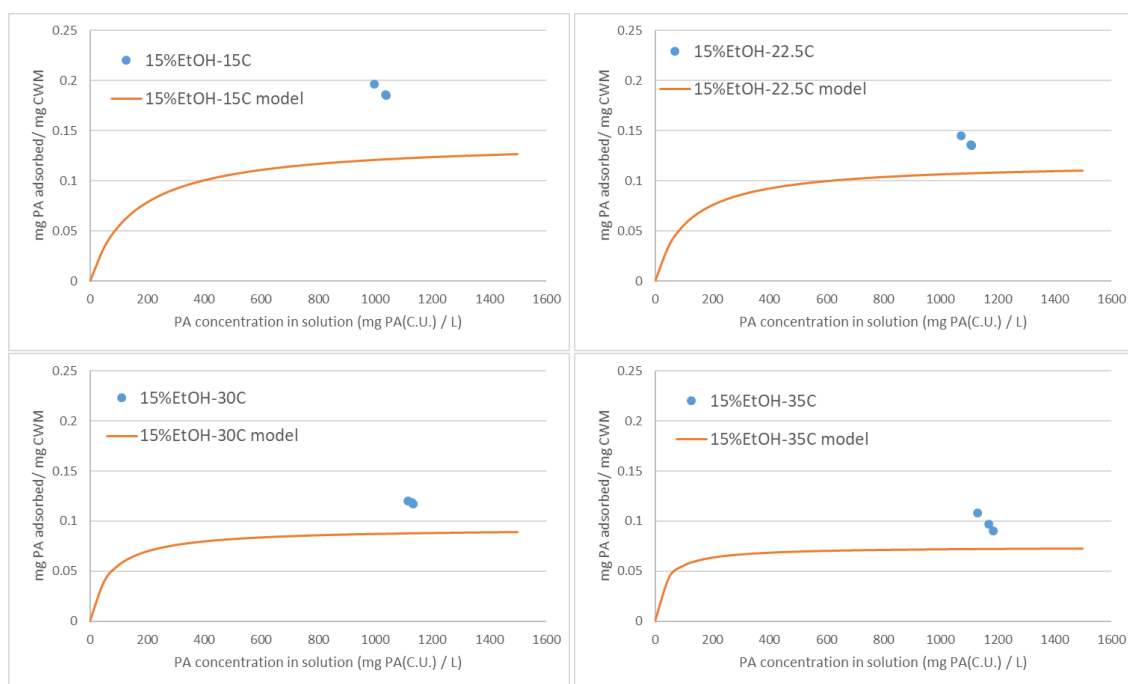
**Figure S1.** Adsorption data points from individual conditions and Langmuir isotherms constructed from calculated values of Equation 2 and 3 in model wine systems of 0% ethanol (*v/v*).



**Figure S2.** Adsorption data points from individual conditions and Langmuir isotherms constructed from calculated values of Equation 2 and 3 in model wine systems of 7.5% ethanol (*v/v*).



**Figure S3.** Adsorption data points from individual conditions and Langmuir isotherms constructed from calculated values of Equation 2 and 3 in model wine systems of 12% ethanol (*v/v*).



**Figure S4.** Adsorption data points from individual conditions and Langmuir isotherms constructed from calculated values of Equation 2 and 3 in model wine systems of 15% ethanol (*v/v*).