







Article

The Power of LC-MS Based Multiomics: Exploring Adipogenic Differentiation of Human Mesenchymal Stem/Stromal Cells

Evelyn Rampler^{1,2,3,*} , Dominik Egger⁴ , Harald Schoeny¹ , Mate Rusz¹,
Maria Pires Pacheco⁵, Giada Marino⁵ , Cornelia Kasper⁴ ,
Thomas Naegele⁵  and Gunda Koellensperger^{1,2,3}

¹ Institute of Analytical Chemistry, University of Vienna, Währinger Str. 38, 1090 Vienna, Austria; harald.schoeny@univie.ac.at (H.S.); mate.rusz@univie.ac.at (M.R.); gunda.koellensperger@univie.ac.at (G.K.)

² Vienna Metabolomics Center (VIME), University of Vienna, Althanstraße 14, 1090 Vienna, Austria

³ Chemistry Meets Microbiology, Althanstraße 14, 1090 Vienna, Austria

⁴ Institute for Cell and Tissue Culture Technologies, University of Natural Resources and Life Sciences, Muthgasse 18, 1190 Vienna, Austria; dominik.egger@boku.ac.at (D.E.); cornelia.kasper@boku.ac.at (C.K.)

⁵ LMU München, Department Biology I, Großhaderner Str. 2-4, 82152 Planegg-Martinsried, Germany; Maria.Pacheco@biologie.uni-muenchen.de (M.P.P.); giada.marino@biologie.uni-muenchen.de (G.M.); Thomas.Naegele@biologie.uni-muenchen.de (T.N.)

* Correspondence: evelyn.rampler@univie.ac.at; Tel.: +43-1-4277-52381

Academic Editor: Rosário Domingues

Received: 29 August 2019; Accepted: 4 October 2019; Published: 8 October 2019



Abstract: The molecular study of fat cell development in the human body is essential for our understanding of obesity and related diseases. Mesenchymal stem/stromal cells (MSC) are the ideal source to study fat formation as they are the progenitors of adipocytes. In this work, we used human MSCs, received from surgery waste, and differentiated them into fat adipocytes. The combination of several layers of information coming from lipidomics, metabolomics and proteomics enabled network analysis of the biochemical pathways in adipogenesis. Simultaneous analysis of metabolites, lipids, and proteins in cell culture is challenging due to the compound's chemical difference, so most studies involve separate analysis with unimolecular strategies. In this study, we employed a multimolecular approach using a two-phase extraction to monitor the crosstalk between lipid metabolism and protein-based signaling in a single sample (~10⁵ cells). We developed an innovative analytical workflow including standardization with in-house produced ¹³C isotopically labeled compounds, hyphenated high-end mass spectrometry (high-resolution Orbitrap MS), and chromatography (HILIC, RP) for simultaneous untargeted screening and targeted quantification. Metabolite and lipid concentrations ranged over three to four orders of magnitude and were detected down to the low fmol (absolute on column) level. Biological validation and data interpretation of the multiomics workflow was performed based on proteomics network reconstruction, metabolic modelling (MetaboAnalyst 4.0), and pathway analysis (OmicsNet). Comparing MSCs and adipocytes, we observed significant regulation of different metabolites and lipids such as triglycerides, gangliosides, and carnitine with 113 fully reprogrammed pathways. The observed changes are in accordance with literature findings dealing with adipogenic differentiation of MSC. These results are a proof of principle for the power of multimolecular extraction combined with orthogonal LC-MS assays and network construction. Considering the analytical and biological validation performed in this study, we conclude that the proposed multiomics workflow is ideally suited for comprehensive follow-up studies on adipogenesis and is fit for purpose for different applications with a high potential to understand the complex pathophysiology of diseases.

Keywords: LC-MS; mesenchymal stem cells; stromal cells; fat differentiation; lipidomics; metabolomics; proteomics; multiomics; network analysis; mathematical modelling

1. Introduction

In the context of obesity-related diseases it is essential to understand the molecular mechanisms that govern the formation of fat cells from stem cells. Mesenchymal stem/stromal cells (MSCs) are multipotent stem cells and the actual progenitors of fat cells/adipocytes [1]. MSCs are easily accessible as they can be derived from surgical waste or biopsies, i.e., bone marrow, birth-associated tissue, and adipose tissue. Due to their high proliferation capacity, immune-modulatory functions, and potential to differentiate into multiple lineages, MSCs carry a huge clinical promise in cell-based therapies, immunomodulation, and tissue engineering [2–5]. In contrast, induced pluripotent stem cells (iPSCs) are still not considered as safe since they are genetically not stable [6]. Furthermore, MSCs are ethically not questionable like embryonic stem cells. Today, adipose tissue is the predominant cell source for MSCs [2,7] as they can be obtained more easily and efficiently than from bone marrow [4]. The process of adipocyte formation, also known as adipogenesis, is regulated by a network of complex molecular processes. Adipocyte differentiation acts via signal transduction of hormones, growth factors, metabolites, lipids, and specific protein receptors mediating external growth and differentiation signals through a cascade of intracellular events. In general, fat cell differentiation is triggered by the ceramide and peroxisomal proliferator-activated receptor gamma (PPAR γ) [8–10]. Insulin and insulin-like growth factor 1 (IGF-1) are required for fat cell formation and activate distinct downstream signal transduction pathways such as (1) a phosphorylation-dephosphorylation mechanism subsequent to IGF-1 tyrosine phosphorylation or (2) insulin activation of the phosphatidylinositol 3-kinase pathway [11]. During the terminal differentiation phase, adipocytes' de novo lipogenesis and insulin sensitivity is highly increased. Protein and mRNA levels for enzymes (e.g., stearyl-CoA desaturase, glycerol-3-phosphate dehydrogenase, and fatty acid synthase) involved in triacylglycerol metabolism are increased 10–100-fold upon fat cell formation [11].

In order to follow MSC differentiation into fat cells, suitable analytical workflows are necessary. Omics-based strategies are ideal for adipocyte differentiation analysis as they are based on the observation of a subset of molecules in one organism. In this work, we apply a multiomics workflow combining metabolomics, lipidomics, and proteomics. Mass spectrometry (MS) based multiomics strategies are extremely powerful due to their unrivaled potential to monitor an entire set of molecules in order to follow cellular metabolism and perturbations [12–14]. The combination of liquid chromatography (LC) with high-resolution MS is ideally suited for multimolecular chemical analysis, as LC-MS enables identification and quantification by (1) retention time, (2) accurate mass, and (3) fragmentation pattern of hundreds to thousands of compounds in parallel. Metabolomics of stem and fat cells provides information on the phenotypic change of small metabolites involved in the differentiation process. With lipid droplet formation as a hallmark of adipogenic differentiation [11], lipidomics is able to reflect elevated lipid content at the same time providing information on MSCs and adipose tissue lipid patterns. Proteomics on the other hand, enables to monitor important protein key players involved in fat cell formation. In our workflow, we aim to merge targeted quantification and non-targeted screening of metabolites and lipids to follow MSC differentiation in adipocytes. The absolutely accurate quantification of several hundred lipids remains a field of analytical development, as desirable lipid compound-specific standardization is a challenge due to the complexity of the lipidome. Recently, we developed the novel Lipidome Isotope Labeling of Yeast (LILY) technology for in vivo labeling of yeast to produce eukaryotic lipid standards [15,16]. With our in vivo labeling approach, several hundred stable-isotope-labeled lipids can be simultaneously produced, enabling us to follow lipids as key players in fat cell differentiation. Isotope dilution approaches involving stable-isotope-labeled lipid and metabolite standards can account for any error accumulated

in the analytical chain of sample preparation, storage, and measurement. Using isotope dilution in combination with high-end chromatography and MS instrumentation for the analysis of MSCs and adipocyte differentiation will provide us with enhanced data matrices as an ideal starting point to build metabolic models. MSC differentiation affects numerous cellular metabolic pathways and signaling cascades. Mathematical metabolic models can reveal metabolic characteristics in these complex regulatory networks [17]. Based on such genome-scale models, essential metabolites, lipids, and proteins which are key to cell differentiation can be identified. For example, a genome-scale study on metabolic network model of bone marrow-derived MSCs has previously been presented [18]. A successful model was developed to identify ways to increase stem cell proliferation and differentiation, providing evidence for the key role of mathematical modelling in biomedical research. Thus, applying a combination of genome-scale modelling and experimental large-scale omics-analysis together with multivariate statistics or pattern recognition [19] promises to yield significant advances in the complex field of adipogenic differentiation.

The mechanistic understanding of fat cell development in the human body is essential for the treatment of obesity-related diseases. However, a high fraction of studies on the mechanisms that direct adipogenic differentiation rely on mouse models or murine cell lines [3,20–23]. In the context of cell-based therapies, translational aspects are of utmost importance as cells from different species might act differently. For example, the *in vitro* proliferation of human MSCs exhibits a relatively low frequency of oncogenic transformation in stark contrast to murine MSCs which frequently gain chromosomal defects *in vitro* and often produce fibrosarcomas when injected back into mice [5,24,25]. To enable potential translation of our results, we decided to use human primary MSCs in early passages for this study. In this work, we present a novel MS-based multiomics strategy to analyze adipogenesis in human MSCs relying on the combination of high-end MS and chromatography, isotopic dilution and network analysis.

2. Results

2.1. Development of a Multiomics Workflow for the Analysis of Adipogenic Differentiation from MSCs

Primary adipose tissue-derived MSCs (MSC0) were cultivated in adipogenic differentiation medium for 21 days (MSC21). Successful adipogenic differentiation was observed by morphological changes of the cells and lipid vacuole formation (Figure 1). In order to perform a representative systems biology experiment, the multiomics data should ideally be generated from the same set of samples to allow for direct comparison under the same conditions [26]. To meet these requirements, we applied an adapted two-phase extraction procedure for MSC and fat cells ($n = 5$) to sequentially extract lipids, metabolites, and proteins [10]. Sequential lipid, metabolite, and protein extraction by MTBE provided the advantage of multimolecular information from one sample without the drawback in sample handling by protein precipitation in the interphase, then chloroform/methanol/water extraction systems were used [27]. We modified the original SIMPLEX protocol [10] by using nitrogen quenching so that trypsin was avoided and less amounts of human MSCs and adipocytes ($\sim 10^5$ cells) were needed. We developed a multiomics strategy based on hyphenated high-end mass spectrometry and chromatography for non-targeted screening and targeted quantification.

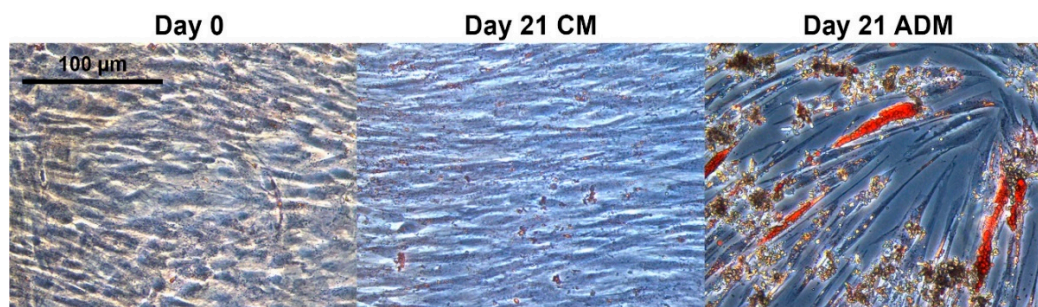


Figure 1. Oil Red O staining of adipose tissue-derived mesenchymal stem/stromal cells (MSCs) after 0 and 21 days cultivation in the adipogenic differentiation medium (ADM) or control medium (CM). The scale bar indicates 100 μm .

Protein information was generated by state of the art LC-MS/MS shotgun proteomics and was used to build metabolic networks linked to human genomic sequences. Metabolite and lipid profiling in MSCs and adipocytes was performed using a novel HILIC-RP dual injection strategy combined with high-resolution Orbitrap-MS [28]. Merging metabolomics and lipidomics assays is usually compromised by different extraction procedures needed (high polarity ranges from very polar small metabolites to medium-mass nonpolar lipids), and typically the two approaches deliver separate data sets. Using the parallel HILIC-RP method, two extracts can be measured on two columns in one analytical run so that metabolite and lipid information is generated in 32 min. Concentrations ranging over three to four orders of magnitude can be assessed by the HILIC-RP-MS assay [28]. The addition of ^{13}C -labeled metabolite/lipid standards enabled us to merge targeted quantification with untargeted compound screening in MSCs and adipocytes. Low sample amounts of MSCs and adipocytes ($\sim 10^5$ cells) were needed for detecting fmol absolute on the column in the parallel HILIC-RP method. This is significantly lower than a recent shotgun lipidomics approach used for the quantitative analysis of white and brown adipose tissue, where pmol of lipids were theoretically detectable [29] highlighting the sensitivity advantage when LC-MS based workflows are applied.

2.2. Targeted Lipidomics and Metabolomics Comparing MSCs and Adipocytes

For targeted analysis, we employed isotopically ^{13}C -labeled metabolite and lipid standards produced in our laboratory for standardization [15,30,31] to follow fat cell differentiation of MSCs. Absolute compound-specific quantification ($n = 3$) of 12 lipids and 54 metabolites (compound-specific quantification using endogenous/ ^{13}C -labeled pairs) was performed using external calibration (8 standards within the calibration range of 0.1–25 μM), with internal standardization by in-house produced ^{13}C -labeled standards and protein normalization. The selection of the targeted analytes was performed on the available standards mixes and corresponding ^{13}C -labeled lipids/metabolites (Table S1). All lipids and metabolites quantified in MSCs/adipocytes were in the range of nmol to fmol range per mg protein with limits of detection of fmol absolute on column. Isotope dilution and the use of the LILY lipids enhanced the quantification significantly (Figures A1 and A2), i.e., triglycerides (TG) 54:6 (R^2 of 0.9812 vs. 0.7146 for label-free quantification). Once more showing the advantage of using our in-house produced standards for quantitation [15,16]. The comparison of the targeted metabolite and lipid quantification in MSCs and adipocytes revealed significant downregulation (fold change > 2 , p -value < 0.05) of GMP, S-adenosyl-methionine, asparagine, L-cystathionine, adenosine, 5'-deoxy-5'-methylthioadenosine, and adenine in adipocytes. The amino acids showed a general trend to be less abundant in adipocytes (Figure A3A), whereas triglycerides and lipid precursors such as carnitine and propionyl-L-carnitine were increased upon differentiation (Figure A3B,C), which can be explained by the formation of lipid droplets upon differentiation of the MSCs. Separation of MSC and adipocytes was observed by principal component analysis using the targeted metabolite and lipid data set (Figure 2A,B). Due to the low number of replicates ($n = 3$) a profound statistical evaluation of significance is not possible here. However, adipocyte (MSC21) metabolite and lipid data showed

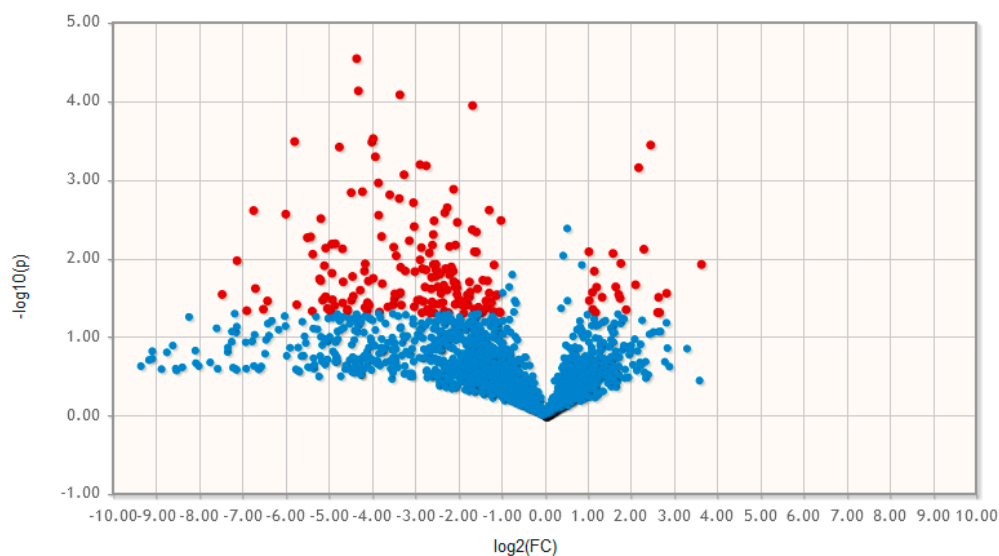


Figure 3. Differential analysis of lipids and metabolites. Volcano plot (derived from untargeted LC-MS) of compounds from primary MSCs and adipocytes using MetaboAnalyst 4.0 (with p -value settings 0.05, interquartile filter) [32]. HILIC-RP-HRMS (positive mode) revealed that 195 out of 3498 compounds were significantly regulated (p -value < 0.05, fold change (FC) > 2). Both lipids and metabolites were significantly upregulated in adipocytes compared to MSCs.

2.4. Biological Validation and Data Interpretation of the Multiomics Workflow

2.4.1. Proteomics Network Reconstruction, Metabolic Modelling and Pathway Analysis

The shotgun proteomic analysis of non-differentiated and differentiated MSCs identified 1869 proteins (Table S1, protein IDs, $n = 2$) and revealed significant dynamics of the cellular proteome during the differentiation process. The observed protein changes are in accordance with previously published proteomics data on human adult stem cell adipogenesis, e.g. matching upregulation of apolipoprotein, fatty acid binding protein, glycerol-3-phosphate dehydrogenase, fatty acid synthase, phosphoglycerate synthase, and downregulation of platelet activating factor, acetylhydrolase 1B, and annexin was observed [34]. The upregulation of glycerol-3-phosphate dehydrogenase and fatty acid synthase was also reported as a consequence of increased triacylglycerol metabolism upon lipid droplet formation in adipocytes [11].

Based on the human genome-scale consensus model Recon 2.4, proteomic data were applied to reconstruct context-specific networks which reflect the specific proteomic constitution of MSCs before and after differentiation. In total, 165 metabolic reactions and processes were fully reprogrammed on the proteome level during differentiation (Figure A5). The strongest effects were observed for reprogramming of reactions in fatty acid metabolism (oxidation, synthesis, eicosanoid, inositol phosphate, and bile acid metabolism) and transport processes (peroxisomal and extracellular, as well as endoplasmatic reticular transport) (Table S1, Figure A5).

Using the protein information together with the generated metabolite and lipid (combining targeted and non-targeted lists with median areas/concentrations for comparison of MSCs and adipocytes) data (Table S1), multiomics pathway analysis was performed (OmicsNet [35]). Comparing MSCs and adipocytes, 113 significantly regulated pathways (p -value > 0.05) (Table S2) were identified in four different correlation networks including one major network (continent network-101 regulated pathways) and three subnetworks (island networks for glycerolipids-7 pathways; glutathione disulfide-2 pathways, carnitine- 3 pathways). Adenosine triphosphate (ATP) and adenosine monophosphate (AMP) showed the highest correlation degree (922, 141 respectively) within the protein-metabolite network (Figure 4A,C) due to the expected change in energy metabolism and phosphorylation-dephosphorylation upon fat differentiation [11]. Several biological relevant and

expected active pathways were identified (Figure 4A–C) including (1) glycerophospholipid signaling (Figure 4A,B, Table S2, network 1) [10,36], (2) the insulin pathway (Figure 4C, Table S2, network 1) [8–10], (3) glycerolipid (triglycerides regulating) pathway with corresponding fat digestion and absorption (Figure A6A, Table S2, subnetwork 2) [11,37,38], (4) carnitine regulation within the fatty acid metabolism, PPAR signaling, and adipocytokine signaling pathways (Figure A6B, Table S2, subnetwork 4) [39–41], and (5) glutathione disulfide within arachidonic acid metabolism and oxidation related pathways (Table S2, subnetwork 3) [42–44]. Interestingly, triglycerides- and carnitine-related pathways were separated as individual subnetworks (Figure A6A,B, Table S2). Both compound classes are known to be highly regulated [11,39] in adipogenesis and will be discussed in more detail below.

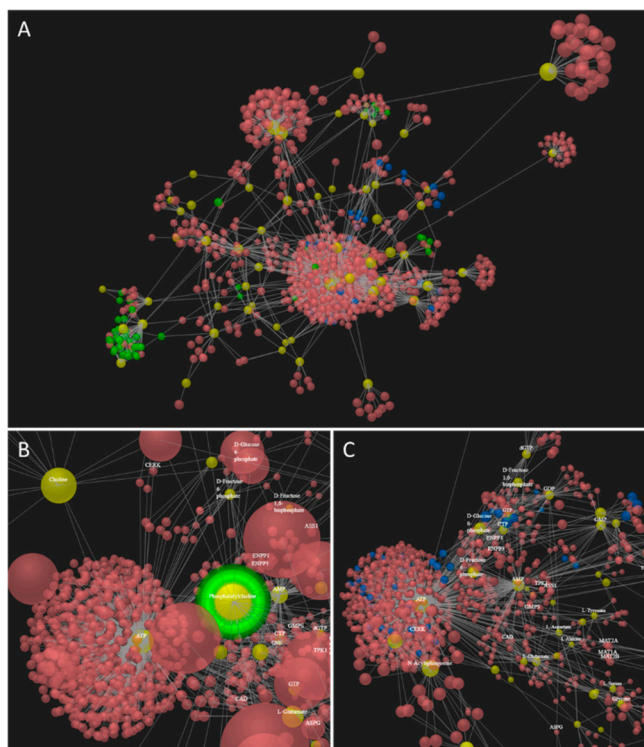


Figure 4. Multiomics network analysis of MSCs and adipocytes. Network analysis by OmicsNet [35] enabled to combine protein, metabolite, and lipid information, and identify regulated pathways in adipogenesis. (A) The network including most protein-metabolite interactions. Proteins are labeled in red and metabolites in yellow. The glycerophospholipid metabolism is labeled in green and the insulin pathway in blue. (B) Phosphatidylcholine as regulated lipid within the glycerophospholipid metabolism. (C) ATP and AMP as major regulated energy metabolites, additionally the insulin pathway is significantly regulated and labeled in blue.

2.4.2. Carnitine Regulation

Increased concentrations of carnitine and propionyl-L-carnitine were observed in adipocytes by targeted analysis (Figure A3C) with a significant regulation of carnitine related pathways (Figure A6B, Table S2, subnetwork 4). Carnitine synthesis is necessary for fatty acid oxidation and fatty acid transport from the cytosol to the mitochondria [45] and is known to improve insulin sensitivity of adipocytes [46], an inherent characteristic of adipose tissue. Interestingly, upregulated acyl-carnitine levels are associated with the promotion of the differentiation process of embryonic stem cells in different cell types [42]. Additionally, carnitine and acetyl-carnitine were found to reduce adipogenesis but stimulate osteogenesis and chondrogenesis in human MSCs by regulating the mitochondrial metabolisms [39]. It is also known to attenuate lipid accumulation in adipocytes via downregulation of PPAR γ , a major adipocyte-specific transcription factor [47].

2.4.3. Triglycerides Upregulation in Lipid Droplets of Adipocytes

A major increase of TGs in adipocytes was observed in the targeted lipid analysis (Figure A3B) and the number of identifications received by non-targeted lipidomics (Figure 3). Additionally, triglycerides were involved in several significantly regulated pathways of the multiomics data (Figure A6A, Table S2, subnetwork 2). Comparing the 10 most regulated compounds in the classes of MSCs and adipocytes (from the combined untargeted metabolite and lipid data set), several interesting m/z variables were found by partial least square and heat map analysis (MetaboAnalyst 4.0 [32]). Some of them could be further identified by a database search (Lipid Search) and manual curation. Four upregulated triglycerides in adipocytes were annotated based on accurate mass, fragmentation and retention time, namely TG (16:0_16_1_18:0), TG (16:0_16:1_18:1), TG (16:1_18_0_18_0), and TG (16:0_18:1_18:1). TGs are the major constituents of lipid droplets representative of successful adipogenic differentiation. Expected lipid droplet formation was induced in the adipocytes (Figure 1) upon medium change and reflected in the list of regulated proteins by the increase of, for example, fatty acid synthase, glycerol-3-phosphate dehydrogenase, and malic enzyme, which are all known to increase the triglyceride metabolism [11].

2.4.4. Gangliosides are Involved in Adipocyte Differentiation and Insulin Sensitivity

The m/z for the gangliosides GM3(d18:1/16:0) and GM3(d18:1/22:1) were listed within the 10 most regulated compounds identified (partial least square, heat map, MetaboAnalyst [32]) when comparing MSCs and adipocytes. We annotated them manually by m/z , fragmentation, and matching retention times (in positive and negative MS mode), and observed an upregulation in adipocytes by a factor of 20 and 30 respectively. Comparing the ganglioside glycosphingolipid fragmentation pattern (Figure A7), the ceramide moiety was determined in the positive ion mode (characteristic sphingosine fragments at m/z 264 and 282) and the glycan residue was annotated in the negative ion mode (characteristic N-acetylneuraminic acid fragment ion at m/z 290). Additionally, a series of gangliosides (GM3(32:1;2), GM3(32:0;2), GM3(33:1;2), GM3(34:0;2), GM3(34:2;2), GM3(35:1;2), GM3(36:0;2), GM3(36:1;2), GM3(36:2;2), GM3(38:1;2), GM3(40:0;2), GM3(40:1;2), GM3(40:2;2), GM3(41:0;2), GM3(41:1;2), GM3(41:2;2), GM3(42:0;2), GM3(42:1;2), GM3(43:1;2), and GM3(43:2;2)) was identified by m/z , elution order depending on the number of double bonds and fatty acid chain length, as well as matching retention time (elution: 22.3–28.3 min) between the different MS modes (+/–). Ten (GM3(33:1;2), GM3(35:1;2), GM3(36:0;2), GM3(41:0;2), GM3(41:1;2), GM3(41:2;2), GM3(42:0;2), GM3(42:1;2), GM3(43:1;2), and GM3(43:2;2)) of the 22 identified gangliosides were only found in adipocytes and all other gangliosides were found in lower abundances in MSCs. This is of special interest, as GM3 gangliosides are part of the sphingolipid metabolism identified by protein-metabolite network data (Table S2(4)). The connection of ganglioside increase upon adipogenesis was further supported by the upregulation of the ganglioside GM2 activator protein in adipocytes, which is able to extract GM2 molecules from membranes to hydrolyze them to GM3. The enzymatic activity of ganglioside GM2 activator protein strongly depends on the sphingolipid and membrane lipid composition [48]. Gangliosides were proposed as a new class of stem cell markers, e.g. GD1a increase for favored osteogenesis in MSCs [49]. They were further found to be involved in the differentiation of MSCs into osteoblasts and neural cells [50] and are generally associated with the insulin metabolic signaling in adipocytes [51]. Insulin is required for fat cell formation activating distinct signal transduction pathways, such as phosphorylation-dephosphorylation or the phosphatidylinositol-3-kinase pathway [10]. Major reprogramming of related pathways (insulin, glycerolipid, sphingolipid, phosphatidylinositol pathway) was also confirmed by the multiomics data (Figure 4, Table S2, subnetwork 1). Additionally, we observed upregulation of perilipin-4 upon adipocyte differentiation of MSCs (Table S1) which is an adipocyte phosphoprotein present in the periphery of lipid storage droplets [3,11].

3. Discussion

The presented multiomics study on the adipogenic differentiation of MSCs is a proof of principle for the power of multimolecular extraction procedures combined with orthogonal LC-MS assays and network construction. Merging metabolomics and lipidomics assays was possible by adapting (no trypsin, less starting cell number) the original SIMPLEX protocol [10] for sequential lipid, metabolite, and protein extraction. Followed by the HILIC-RP dual injection setup, metabolite and lipid information was generated from the same sample in one analytical run. Additionally, targeted quantification by ^{13}C -labeled metabolite/lipid standards could be performed with untargeted compound screening in the same assay, so that sample amounts needed were significantly reduced. The ^{13}C -labeled metabolites/lipids can be potentially used for normalization of non-targeted LC-MS based multiomics data, which was recently shown to be possible for lipidomics data [52] and represents an important future goal. LC-MS assays are especially useful when low abundant metabolites and lipids are of interest as the chromatographic separation offers cleanup of the sample matrix, higher linear dynamic range, and additional compound identification by retention time information. The power for the detection of unknown low abundant compounds was impressively shown by the example of GM3 gangliosides in MSCs and adipocytes. None of the gangliosides could be annotated by a database search, although the used *in silico* database included all types of gangliosides (GM1, GM2, GM3). Only when comparing the non-targeted datasets of MSCs and adipocytes, two of these high mass (>1000 m/z) glycosphingolipids showed up as interesting differentiating unknown compound. Using manual curation of the fragmentation pattern, matching retention times in the positive and negative ion mode, and retention time order, 22 different gangliosides could be successfully annotated and were further confirmed by the upregulation of the ganglioside GM2 activator protein. Despite the limited sample number of the assay, all biological observations for the regulation of triglycerides [3,8], gangliosides [51], and reprogrammed pathways [23] in adipocytes are in accordance with the literature. Further biological interpretation of the data is beyond the scope of this work. Future studies will focus on in-depth analysis of fat differentiation involving time-series experiments, tracer studies, and the comparison of different fat cell tissue types. Additionally, targeted LC-MS based assays will be developed for metabolite and lipid classes relevant in adipogenesis such as triglycerides, acyl-carnitines, or gangliosides.

The presented biotechnology workflow based on adult human MSCs from surgical waste represents a general strategy to avoid animal experiments and induced pluripotent stem cells [6,53] for certain clinical studies and drug testing. The performed biological validation (literature search, identification of relevant regulated compounds and pathways) combined with the analytical method validation (analytical figures of merit; use of commercially available standards as well as in-house produced labeled metabolites and lipids; database annotation based on RT, accurate mass and fragmentation pattern; additional manual curation), lets us conclude that the presented workflow is fit for purpose for other cell culture or tissue-based multiomics studies. LC-MS based multiomics workflows enable to follow the complex pathophysiology of diseases among various other applications. Our multiomics workflow offers comprehensive multimolecular information based on a single sample (using the sequential extraction approach) and low analysis time. We hypothesize that reproducible diagnostic high-throughput LC-MS based assays can be implemented by automatic sample extraction and data evaluation.

4. Materials and Methods

4.1. Cell Culture

The use of human tissue was approved by the ethics committee of the Medical University Vienna, Austria (EK Nr. 957/2011, 30 January 2013) and the donor gave written consent. Human adipose tissue-derived MSCs were isolated from a female donor (age 29) within 3–6 h after surgery as described before [54]. Briefly, adipose tissue was obtained from abdominoplasty, minced with scissors, and digested with collagenase type I (Sigma Aldrich, St. Louis, MO, USA). After several centrifugation

and washing steps, the stromal vascular fraction was released in a cell culture flask (Sarstedt, Nümbrecht, Germany) with standard cell culture medium composed of MEM alpha (Thermo Fisher Scientific, Waltham, MA, USA), 0.5% gentamycin (Lonza, Basel, Switzerland), 2.5% human platelet lysate (hPL; PL BioScience, Aachen, Germany), and 1 U/mL heparin (Ratiopharm, Ulm, Germany), and incubated in a humidified incubator at 37 °C and 5% CO₂. Subsequently, MSCs were selected by plastic adherence and cryo-preserved in 77.5% MEM alpha, 12.5% hPL, 10% DMSO (Sigma Aldrich), and 1 U/mL heparin (defined as passage 0, P0). For the adipogenic differentiation, cells were thawed at passage 0 and further expanded for two passages in T-flasks. After harvest via accutase (GE healthcare, Little Chalfont, UK) treatment, MSCs were seeded at 4.000 cells/cm² in a 6-well plate (Sarstedt, Nümbrecht, Germany), coated with 2 µg/cm² fibronectin (Sigma, St. Louis, MO, USA), and 2 mL of CM was added. Upon confluency, the medium was changed to adipogenic differentiation medium (ADM; Miltenyi, Bergisch-Gladbach, Germany), supplemented with 0.5% gentamycin, and the cells were cultured for 21 days, while the medium was changed every 2–3 days. Undifferentiated MSCs at day 0 served as a control. Subsequently, the cells were fixed with 4% paraformaldehyde (Sigma, St. Louis, MO, USA), washed with ddH₂O and stained with Oil Red O solution (Sigma, St. Louis, MO, USA). The staining of lipid vacuoles was observed by bright-field microscopy (DMIL LED with camera ICC50HD; both Leica, Wetzlar, Germany).

4.2. Multiomics

All solvents were LC-MS grade. Metabolite and lipid standards were from Sigma, Carbosynth (Compton Berkshire, England) or Avanti Polar Lipids, Inc. (Alabaster, Alabama, USA) and were weighed and dissolved in an appropriate solvent. A multi-metabolite mix (148 metabolites) and multi-lipid mix (76 lipids) were prepared (a comprehensive list of the standards can be found in Table S1). A metabolite and lipid ¹³C-labeled standard mix was prepared using the fully ¹³C-labeled internal standard from ISOTopic solutions e.U. (Vienna, Austria), combined with an in-house produced ¹³C-labeled lipid LILY triglyceride fraction and reconstituted in 50% MeOH. The MSC and adipocytes cells were quenched directly on the 6-well plate using liquid nitrogen prior to storage at –80 °C until sample preparation. The adherent cells (~10⁵ per sample) were harvested (5 samples per MSC0/MSC21 condition, 2 medium blanks) using a cell scraper and extracted with a mixture of methanol, methyl-tert-butylether, and 10 mM ammonium formate. The adapted SIMPLEX two-phase extraction preparation [10] enabled the collection of the lipid fraction (upper phase), the metabolite fraction (lower phase), and the protein pellet. All samples (n = 5 per condition) were used for non-targeted analysis. Part of the samples were spiked (n = 3 per condition) with ¹³C isotopically labeled metabolites and LILY lipids for targeted quantification. This fraction was used for absolute compound-specific quantification by external calibration (0.1, 0.25, 0.5, 0.75, 1, 5, 10, 25 µM) with the commercially available standards (multi-metabolite, multi-lipid mix) and internal standardization by ¹³C-labeled metabolites and lipids.

A novel HILIC-RP DUAL injection strategy combined with high-resolution Orbitrap-MS was applied for the simultaneous analysis of small polar metabolites and lipids [28] of the MSC samples. Briefly, a Vanquish Duo UHPLC system (Thermo Fisher Scientific) equipped with an autosampler with two injection units, two binary pumps and a column compartment was used to enable parallel HILIC and RP analyses. A SeQuant® ZIC®-pHILIC column (150 × 2.1 mm, 5 µm, polymer, Merck-Millipore) was used with gradient elution under alkaline conditions (mobile phase A: 90% 10 mM ammonium bicarbonate, pH 9.2/10% ACN; mobile phase B 100% ACN) combined with an Acquity HSS T3 (2.1 mm × 150 mm, 1.8 µm, Waters) RP column (mobile phase A: ACN/H₂O 3:2, v/v, solvent B: IPA/ACN 9:1, v/v) using a VanGuard precolumn (2.1 mm × 5 mm, 100 Å, 1.8 µm). Two different gradients were applied for HILIC and RP with a total run time of 32 min as described before [28] using a flow rate of 300/250 µL min⁻¹ and an injection volume of 5 µL. An additional 2-positional 6-port valve and the use of a T-piece in front of the mass spectrometer enabled to deliver the HILIC (0–11 min) or RP (11–32 min) eluent to the MS, while the other separation eluent was directed to waste. High-resolution

mass spectrometry in positive and negative mode was conducted on a high field Thermo Scientific™ Q Exactive HF™ quadrupole-Orbitrap mass spectrometer equipped with an electrospray source using Full-MS (resolution 120,000 for quantification, positive mode only) and ddMS (resolution 30,000, positive and negative mode, Top-15) for identification. Detailed information on the dual injection HILIC-RP-MS workflow can be found in the supplementary information of Appendix B.

The protein fractions containing the isotopically spiked samples ($n = 3$) were determined by Bradford assay (Pierce™ Coomassie Plus Assay Kit) and used for normalization. The other protein pellets ($n = 2$) were used for shotgun proteomics including protein extraction, digestion and LC-MS/MS analysis. Proteins were further purified in a 6 M guanidine chloride and 10 mM HEPES-KOH buffer (pH 7.5) containing protease inhibitors before being followed by precipitation in a methanol/chloroform/water (4:3:2 *v/v/v*) mixture. Precipitated proteins were resuspended in 6 M Urea, 2 M thiourea, and 10 mM HEPES-KOH (pH 7.5). For reduction and alkylation, DTT (10 mM) and iodoacetamide (50 mM) was added. Proteins were trypsin-digested overnight, and 1 μg was loaded on the column for LC-MS/MS analysis. LC-MS/MS analysis was performed on a nano-LC-system (Ultimate 3000 RSLC; Thermo Fisher Scientific) coupled to an Impact II high resolution quadrupole time-of-flight (Bruker) using a Captive Spray nano electrospray ionization source (Bruker Daltonics). The nano-LC system was equipped with an Acclaim Pepmap nanotrap column (C18, 100 \AA , 700 μm 2 cm; Thermo Fisher Scientific) and an Acclaim Pepmap RSLC analytical column (C18, 100 \AA , 75 μm \times 50 cm; Thermo Fisher Scientific). The peptide mixture was fractionated by applying a linear gradient of 5% to 45% acetonitrile at a flow rate of 250 nL min^{-1} over a period of 80 min. The column temperature was set to 50°C. MS1 spectra were acquired at 3 Hz with a mass range from m/z 200–2000, with the Top-15 most intense peaks selected for MS/MS analysis using an intensity-dependent spectra acquisition time between 4 and 16 Hz. Dynamic exclusion duration was 0.5 min.

4.3. Data Analysis

Data analysis was performed by dedicated software for targeted (Skyline 4.2) and untargeted analysis (metabolites: Compound Discoverer 3.0; lipids: Lipid Search 4.1, Compound Discoverer 3.0; proteins: MaxQuant 1.6.2.10). For targeted analysis, normalization by ^{13}C -labeled lipids/metabolites and protein content was performed. For non-targeted data analysis, background correction (by medium/blank samples) and normalization (mean-centered and divided by standard deviation in MetaboAnalyst) was performed prior to further statistical and pathway analysis using MetaboAnalyst 4.0 [32]. Adipocyte samples had a higher variation than MSC cells, which was considered for statistical analysis. Context-specific metabolic networks were reconstructed from shotgun proteomics data applying the FASTCORE algorithm [55] using a consistent version of Recon 2.4 [56]. FASTCC [55] was applied with the default flux activity threshold of $1\text{e-}4$. Proteomic data was mapped to the consistent version of Recon2.4 via the Gene Protein Association rules (GPR rules) to obtain a set of core reactions, i.e., reactions that were found both in the proteomic data and the network model of Recon2.4. FASTCORE were used to identify the missing reactions necessary to obtain a consistent context-specific subnetwork for all differentiation states. OmicsNet was used for multiomics data integration, visualization and pathway analysis [35].

Supplementary Materials: The following are available online at <http://www.mdpi.com/1420-3049/24/19/3615/s1>, Table S1. Summary of the protein and lipid/metabolite data, Table S2. Regulated pathways comparing MSC and adipocytes.

Author Contributions: Conceptualization, E.R., D.E. and T.N.; methodology, E.R., M.R., H.S., and G.K.; software, E.R., T.N. and M.R.; validation, E.R., T.N. and D.E.; investigation, E.R. and H.S.; resources, G.K., C.K. and T.N.; data curation, E.R., M.P.P., G.M., T.N.; writing—original draft preparation, E.R.; writing—review and editing, E.R., D.E., T.N., G.K. and C.K.; project administration, E.R.; funding acquisition, E.R., D.E., C.K., G.K. and T.N.

Funding: The LILY project for the production of isotopically labeled lipid received funding from the Austrian BMWFW Federal Ministry (aws PRIZE prototype funding). Open Access Funding by the University of Vienna.

Acknowledgments: This work is supported by the University of Vienna, the Faculty of Chemistry, the Vienna Metabolomics Center (VIME; <http://metabolomics.univie.ac.at/>) and the research platform Chemistry Meets

Microbiology and the Mass Spectrometry Center (MSC) of the University of Vienna. The authors thank all members of individual groups (University of Vienna, University of Natural Resources and Life Sciences and LMU München) for continuous support. Especially, we acknowledge Sophie Neumayer for laboratory and Yasin El Abiead for data evaluation discussion.

Conflicts of Interest: The authors declare no conflict of interest.

Appendix A

Table S1. Summary of the protein and lipid/metabolite data. Lists of metabolite and lipid standards used for targeted LC-MS. Protein IDs. Recon 2.4 pathway matches. Summary input list of identified proteins (fasta numbers), lipids, and metabolites (human metabolome database numbers) using median areas/concentrations for MSCs and adipocytes.

Table S2. Regulated pathways comparing MSC and adipocytes. Significantly regulated (p -value < 0.05) pathways identified by protein/metabolite network interaction using OmicsNet [35].

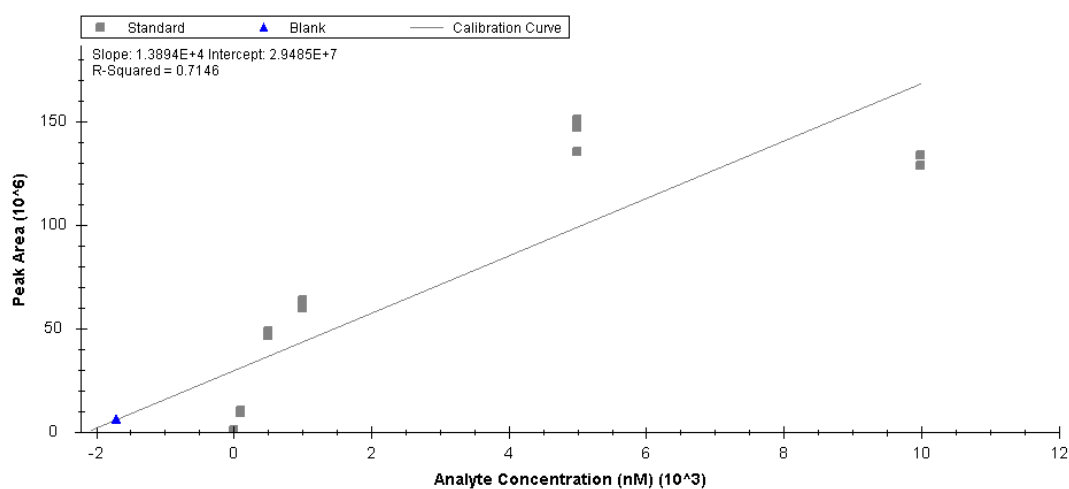


Figure A1. Triglycerides (TG) 54:6 label-free quantification using external calibration ($n = 3$).

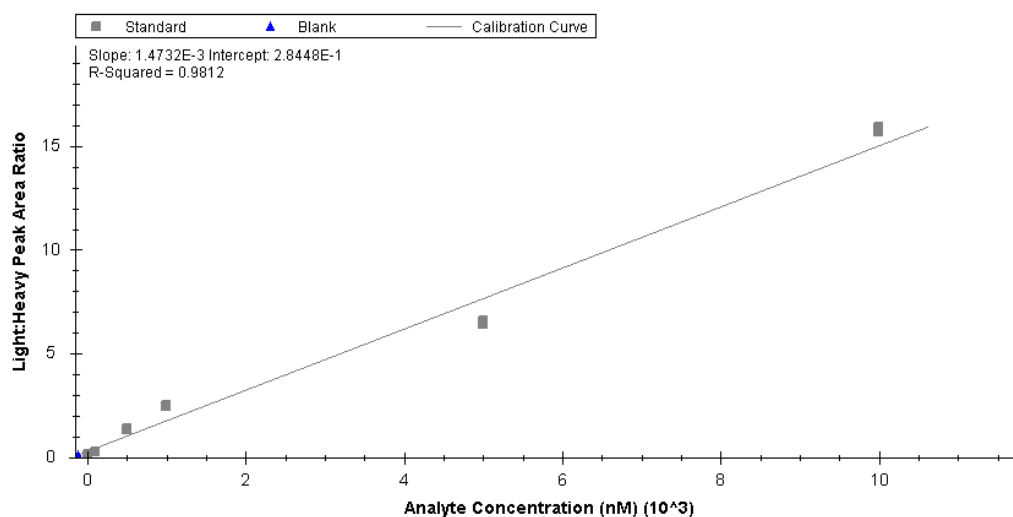


Figure A2. Compound-specific quantification of TG 54:6 using external calibration and internal standardization ($n = 3$) by ¹³C-labeled TG 54:6 (LILY technology [15]).

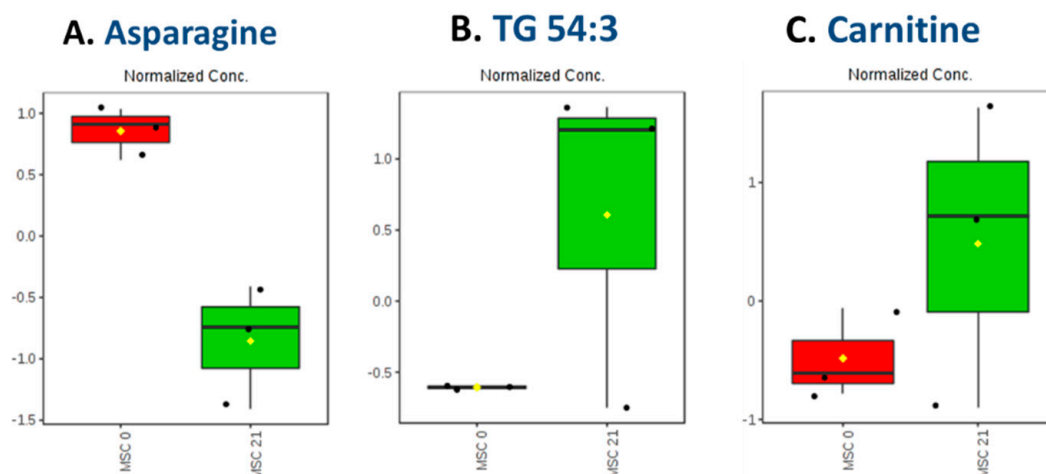


Figure A3. Exemplary targeted quantification of metabolites and lipids. Compound-specific quantification in MSCs (MSC0) and adipocytes (MSC21) using external calibration and standardization by ^{13}C -labeled matching compounds for (A) Normalization was performed by protein amounts and autoscaling in MetaboAnalyst 4.0 [32]. For amino acids such as asparagine, general downregulation in adipocytes was observed. For lipids and lipid precursors such as TG 54:3 (B) or carnitine (C), a trend towards upregulation in adipocytes was observed. Data is represented as median \pm upper/lower quartile (n = 3).

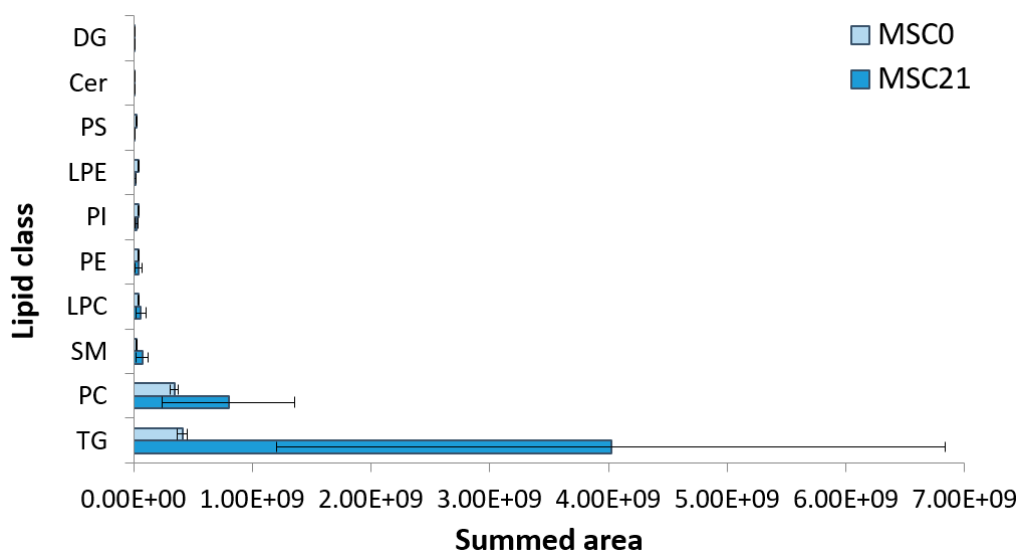


Figure A4. Most abundant lipid classes in MSCs and adipocytes. Identification was performed with LipidSearch 4.2. using the summed areas of all annotated lipids in a given lipid class. Abbreviations: DG- Diglyceride, Cer- Ceramide, PS- Phosphatidylserine, LPE- Lysophosphatidylethanolamine, PI- Phosphatidylinositol, PE- Phosphatidylethanolamine, LPC- Lysophosphatidylcholine, SM- Sphingomyline, PC- Phosphatidylcholine, TG- Triglyceride. Data is represented as mean \pm % variation (n = 5).

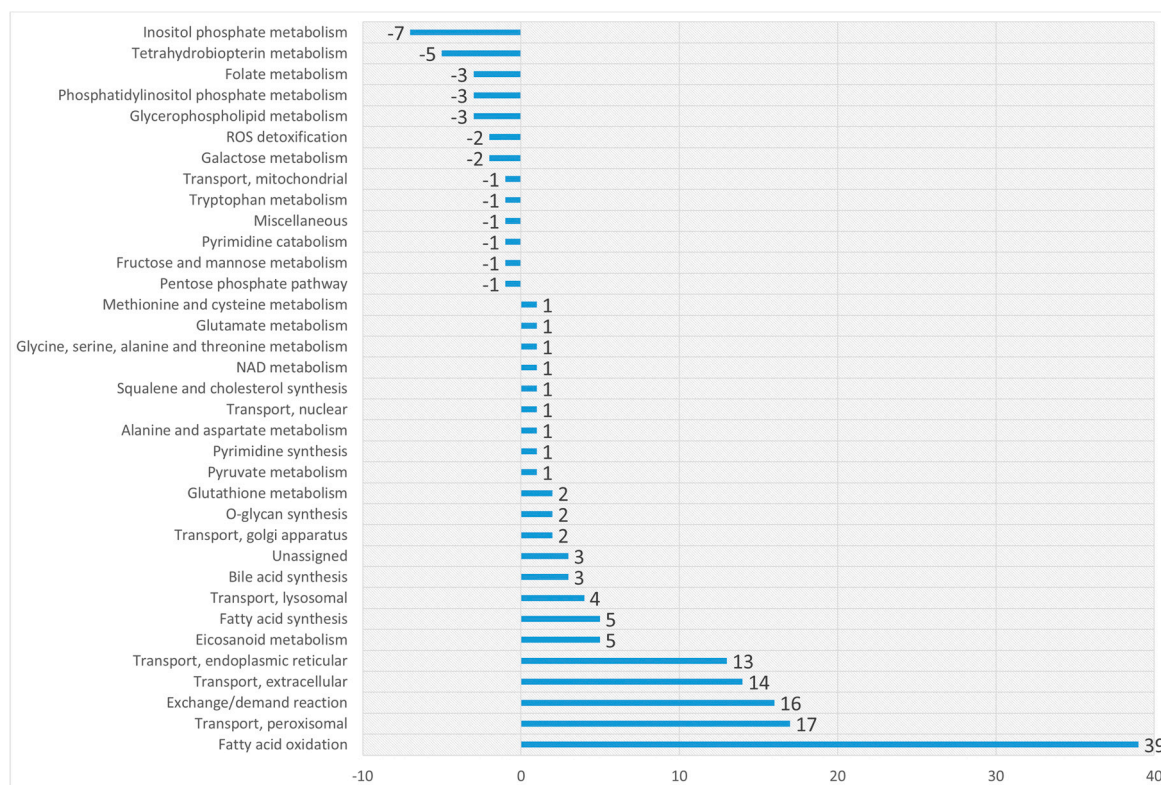


Figure A5. Reprogramming of metabolic pathways during adipogenic differentiation of MSCs. Numbers represent differences of proteomics-based reconstructed pathways (Recon 2.4 [57]) before and after MSC differentiation. A positive number indicates an increase of reactions in the pathway during differentiation, negative numbers indicate a decrease during differentiation. Differences were built from mean values of two replicates.

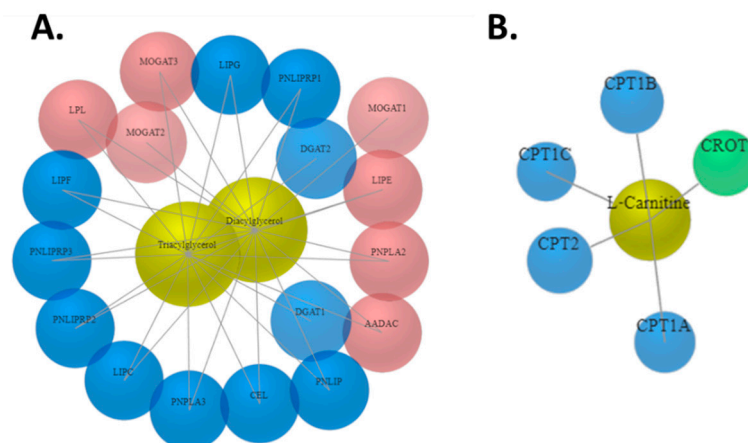


Figure A6. Carnitine and di- and triglyceride regulation in adipogenic differentiation. Example networks of metabolite-protein interaction analysis using OmicsNet [35] (A) Triglyceride and diglyceride regulation in adipocytes. The blue labeling highlights the glycerophospholipid proteins. (B) Carnitine network. The blue labeling highlights proteins of the peroxisomal proliferator-activated receptor (PPAR) signaling pathway, green label of peroxisomal carnitine O-octanoyltransferase (CROT gene): Transport of medium- and long- chain acyl-coenzyme A (CoA) molecules out of the peroxisome to the cytosol and mitochondria. The protein thus plays a role in lipid metabolism and fatty acid beta-oxidation.

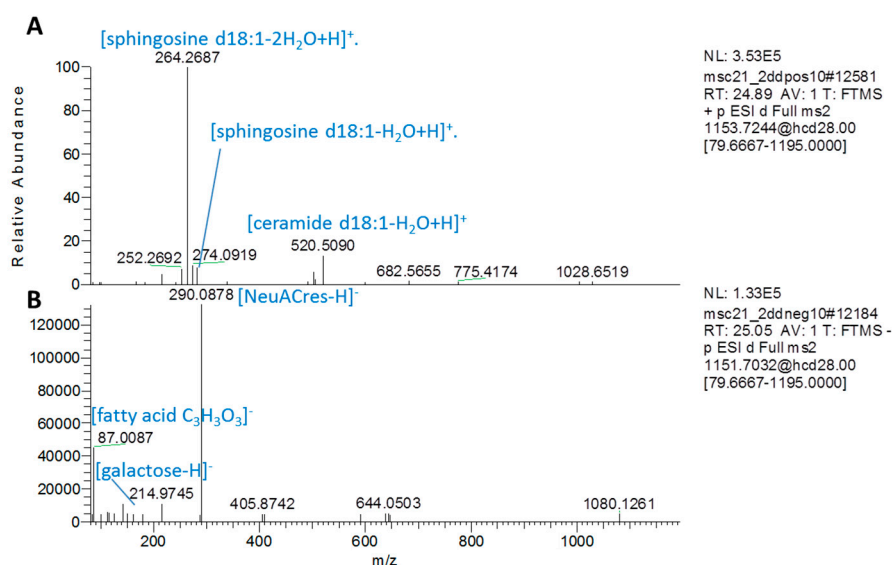


Figure A7. MS2 spectra of predicted ganglioside. Fragmentation spectra (Thermo Xcalibur) of regulated ganglioside GM3(d18:1/16:0) (sum formula, C₅₇H₁₀₄N₂O₂₁) show characteristic lipid fragments [58] in the positive ion mode and characteristic glycan moieties in the negative ion mode.

Appendix B

Supplementary Information

LC-MS Assay for Lipids and Metabolites- HILIC-RP-MS Dual Injection Setup

A recently published HILIC-RP-MS method was applied based on a Vanquish Duo UHPLC system (Thermo Fisher Scientific) equipped with an autosampler with two injection units, two binary pumps and a column compartment enabling parallel HILIC and RP analyses [28]. The temperature of the autosampler was set to 10 °C.

For metabolite analysis, a SeQuant® ZIC®-pHILIC column (150 × 2.1 mm, 5 μm, polymer, Merck-Millipore) was used with gradient elution under alkaline conditions with mobile phase A being 90% 10 mM ammonium bicarbonate, pH 9.2/10% acetonitrile and mobile phase B being 100% acetonitrile. A flow rate of 300 μL min⁻¹, 5 μL injection volume (starting conditions) and 40 °C column temperature was used with the following gradient: 0.0–6.0 min 75–45% B, 6.0–7.0 min decrease to 30% B, 7.0–10.0 min 30% B and at 10.0 min switch to 75% B. From 15 to 27 min, the flow rate was reduced to 50 μL min⁻¹ in order to save solvents during RP elution and the injector needle was washed with 40% MeOH.

For lipid analysis, an Acquity HSS T3 (2.1 mm × 150 mm, 1.8 μm, Waters) with a VanGuard Precolumn (2.1 mm × 5 mm, 100 Å, 1.8 μm) was applied. The flow rate was set to 250 μL min⁻¹, the injection volume 5 μL and the column temperature to 40 °C using ACN/H₂O (3:2, v/v) as solvent A and IPA/ACN (9:1, v/v) as solvent B. Both solvents contained 0.1% formic acid and 10 mM ammonium formate and the following gradient was used: 0–12.0 min 30% B, 12.0–25.0 min ramp to 75% B, 25.0–27.0 min ramp to 100% B, 27.0–32.0 min 100% B, 32.0 min fast switch to 30% B. Equilibration of minimum at least 5 min required was continued during the following HILIC injection. The injector needle was washed with 75% IPA, 25% H₂O, and 0.1% formic acid for 5 s prior to each injection.

Postcolumn 2-position 6-port valves were installed, respectively, followed by a T-piece prior to the introduction into the MS. Two orthogonal separations were performed consecutively (HILIC: 0–11 min; RP: 11–32 min), while the other separation eluent was directed to the waste. The dual-injection sampler was programmed so that the metabolite and lipid extract were directed to the corresponding autosampler. The analytical run was initialized upon injection of the metabolite sample onto the HILIC

column, while the injection of the lipid sample was delayed by 10 min corresponding to the run time of HILIC separation. The second injection on the RP column followed after 10 min and was synchronized to the switching of the two postcolumn 6-port valves at 11 min. The RP separation was carried out during the equilibration of the HILIC column with a total run time of 32 min.

High-resolution mass spectrometry was conducted on a high field Thermo Scientific™ Q Exactive HF™ quadrupole-Orbitrap mass spectrometer equipped with an electrospray source. The ESI source parameters were the following: sheath gas 40, auxiliary gas 3, spray voltage 2.8 kV in negative and 3.5 kV in the positive mode, capillary temperature 280 °C, S-Lens RF level 30 and auxiliary gas heater 320 °C. Spectral data were acquired in the profile mode. From 0 to 11 min full mass scan data in the range of 65–975 m/z were acquired followed by 200–2000 m/z from 11 to 32 min for lipid analysis. For the Full-MS quantification runs, positive mode data were acquired with a resolution of 120,000. The automatic gain control (AGC) target was set to 1e6 and the maximum injection time (IT) was 200 ms and 100 ms for Full-MS and ddMS2 respectively. For identification, data-dependent MS2 (ddMS2) Top-15 fragmentation spectra were acquired in positive and negative modes separately with a resolution of 30,000 for MS2. The ions were isolated with 1 m/z and fragmented with normalized collision energies of NCE 30 for HILIC metabolites and 28 for RP lipids. The dynamic exclusion of triggered m/z was set to 10 s. Iterative exclusion lists from pooled samples were generated using the IE-Omics tool [59].

References

1. Tang, Q.Q.; Lane, M.D. Adipogenesis: From Stem Cell to Adipocyte. *Annu. Rev. Biochem.* **2012**, *81*, 715–736. [[CrossRef](#)] [[PubMed](#)]
2. Gimble, J.M.; Katz, A.J.; Bunnell, B.A. Adipose-derived stem cells for regenerative medicine. *Circ. Res.* **2007**, *100*, 1249–1260. [[CrossRef](#)] [[PubMed](#)]
3. Galateanu, B.; Dinescu, S.; Cimpan, A.; Dinischiotu, A.; Costache, M. Modulation of adipogenic conditions for prospective use of hADSCs in adipose tissue engineering. *Int. J. Mol. Sci.* **2012**, *13*, 15881–15900. [[CrossRef](#)] [[PubMed](#)]
4. Dai, R.; Wang, Z.; Samanipour, R.; Koo, K.; Kim, K. Adipose-Derived Stem Cells for Tissue Engineering and Regenerative Medicine Applications. *Stem Cells Int.* **2016**, *2016*, 1–19. [[CrossRef](#)] [[PubMed](#)]
5. Fitzsimmons, R.E.B.; Mazurek, M.S.; Soos, A.; Simmons, C.A. Mesenchymal stromal/stem cells in regenerative medicine and tissue engineering. *Stem Cells Int.* **2018**, *2018*. [[CrossRef](#)] [[PubMed](#)]
6. Yoshihara, M.; Hayashizaki, Y.; Murakawa, Y. Genomic Instability of iPSCs: Challenges Towards Their Clinical Applications. *Stem Cell Rev. Reports* **2017**, *13*, 7–16. [[CrossRef](#)] [[PubMed](#)]
7. Badimon, L.; Cubedo, J. Adipose tissue depots and inflammation: Effects on plasticity and resident mesenchymal stem cell function. *Cardiovasc. Res.* **2017**, *113*, 1064–1073. [[CrossRef](#)] [[PubMed](#)]
8. Wu, Z.; Rosen, E.D.; Brun, R.; Hauser, S.; Adelmant, G.; Troy, A.E.; McKeon, C.; Darlington, G.J.; Spiegelman, B.M. Cross-regulation of C/EBP α and PPAR γ controls the transcriptional pathway of adipogenesis and insulin sensitivity. *Mol. Cell* **1999**, *3*, 151–158. [[CrossRef](#)]
9. Park, B.O.; Ahrends, R.; Teruel, M.N. Consecutive Positive Feedback Loops Create a Bistable Switch that Controls Preadipocyte-to-Adipocyte Conversion. *Cell Rep.* **2012**, *2*, 976–990. [[CrossRef](#)]
10. Coman, C.; Solari, F.A.; Hentschel, A.; Sickmann, A.; Zahedi, R.P.; Ahrends, R. Simultaneous Metabolite, Protein, Lipid Extraction (SIMPLEX): A Combinatorial Multimolecular Omics Approach for Systems Biology. *Mol. Cell. Proteomics* **2016**, *15*, 1453–1466. [[CrossRef](#)]
11. Gregoire, F.M.; Smas, C.M.; Sul, H.S. Understanding adipocyte differentiation. *Physiol. Rev.* **1998**, *78*, 783–809. [[CrossRef](#)] [[PubMed](#)]
12. Fell, D.A. Beyond genomics. *Trends Genet.* **2001**, *17*, 680–682. [[CrossRef](#)]
13. Fiehn, O. Metabolomics—the link between genotypes and phenotypes. *Plant Mol. Biol.* **2002**, *48*, 155–171. [[CrossRef](#)] [[PubMed](#)]
14. Griffiths, W.J.; Wang, Y.; Bill, W. Mass spectrometry: From proteomics to metabolomics and lipidomics. *Chem. Soc. Rev.* **2009**, *38*, 1882–1896. [[CrossRef](#)] [[PubMed](#)]

15. Rampler, E.; Coman, C.; Hermann, G.; Sickmann, A.; Ahrends, R.; Koellensperger, G. LILY-lipidome isotope labeling of yeast: In vivo synthesis of ^{13}C labeled reference lipids for quantification by mass spectrometry. *Analyst* **2017**, *142*, 1891–1899. [[CrossRef](#)] [[PubMed](#)]
16. Rampler, E.; Criscuolo, A.; Zeller, M.; El Abiead, Y.; Schoeny, H.; Hermann, G.; Sokol, E.; Cook, K.; Peake, D.A.; Delanghe, B.; et al. A Novel Lipidomics Workflow for Improved Human Plasma Identification and Quantification Using RPLC-MSn Methods and Isotope Dilution Strategies. *Anal. Chem.* **2018**, *90*, 6494–6501. [[CrossRef](#)] [[PubMed](#)]
17. He, Y.; Wang, Y.; Zhang, B.; Li, Y.; Diao, L.; Lu, L.; Yao, J.; Liu, Z.; Li, D.; He, F. Revealing the metabolic characteristics of human embryonic stem cells by genome-scale metabolic modeling. *FEBS Lett.* **2018**, *592*, 3670–3682. [[CrossRef](#)]
18. Fouladiha, H.; Marashi, S.A.; Shokrgozar, M.A.; Farokhi, M.; Atashi, A. Applications of a metabolic network model of mesenchymal stem cells for controlling cell proliferation and differentiation. *Cytotechnology* **2018**, *70*, 331–338. [[CrossRef](#)]
19. Fürtauer, L.; Pschenitschnigg, A.; Scharnosi, H.; Weckwerth, W.; Nägele, T. Combined multivariate analysis and machine learning reveals a predictive module of metabolic stress response in *Arabidopsis thaliana*. *Mol. Omi.* **2018**, *14*, 437–449. [[CrossRef](#)]
20. Simon, M.F.; Daviaud, D.; Pradère, J.; Guigné, C.; Wabitsch, M.; Chun, J.; Valet, P.; Saulnier-Blache, J.S. Lysophosphatidic acid inhibits adipocyte differentiation via lysophosphatidic acid 1 receptor-dependent down-regulation of peroxisome proliferator-activated receptor gamma2. *J. Biol. Chem.* **2005**, *280*, 14656–14662. [[CrossRef](#)]
21. Shoham, N.; Girshovitz, P.; Katzungold, R.; Shaked, N.T.; Benayahu, D.; Gefen, A. Adipocyte stiffness increases with accumulation of lipid droplets. *Biophys. J.* **2014**, *106*, 1421–1431. [[CrossRef](#)] [[PubMed](#)]
22. Silva, F.J.; Holt, D.J.; Vargas, V.; Yockman, J.; Boudina, S.; Atkinson, D.; Grainger, D.W.; Revelo, M.P.; Sherman, W.; Bull, D.A.; et al. Metabolically active human brown adipose tissue derived stem cells. *Stem Cells* **2014**, *32*, 572–581. [[CrossRef](#)] [[PubMed](#)]
23. Nassiri, I.; Lombardo, R.; Lauria, M.; Morino, M.J.; Moysesos, P.; Varma, V.; Nolen, G.T.; Knox, B.; Sloper, D.; Kaput, J.; et al. Systems view of adipogenesis via novel omics-driven and tissue-specific activity scoring of network functional modules. *Sci. Rep.* **2016**, *6*, 1–19. [[CrossRef](#)] [[PubMed](#)]
24. Bernardo, M.E.; Zaffaroni, N.; Novara, F.; Cometa, A.M.; Avanzini, M.A.; Moretta, A.; Montagna, D.; Maccario, R.; Villa, R.; Daidone, M.G.; et al. Human bone marrow-derived mesenchymal stem cells do not undergo transformation after long-term in vitro culture and do not exhibit telomere maintenance mechanisms. *Cancer Res.* **2007**, *67*, 9142–9149. [[CrossRef](#)] [[PubMed](#)]
25. Miura, M.; Miura, Y.; Padilla-Nash, H.M.; Molinolo, A.A.; Fu, B.; Patel, V.; Seo, B.-M.; Sonoyama, W.; Zheng, J.J.; Baker, C.C.; et al. Accumulated Chromosomal Instability in Murine Bone Marrow Mesenchymal Stem Cells Leads to Malignant Transformation. *Stem Cells* **2006**, *24*, 1095–1103. [[CrossRef](#)] [[PubMed](#)]
26. Pinu, F.R.; Beale, D.J.; Paten, A.M.; Kouremenos, K.; Swarup, S.; Schirra, H.J.; Wishart, D. Systems Biology and Multi-Omics Integration: Viewpoints from the Metabolomics Research Community. *Metabolites* **2019**, *9*, 76. [[CrossRef](#)] [[PubMed](#)]
27. Weckwerth, W.; Wenzel, K.; Fiehn, O. Process for the integrated extraction, identification and quantification of metabolites, proteins and RNA to reveal their co-regulation in biochemical networks. *Proteomics* **2004**, *4*, 78–83. [[CrossRef](#)] [[PubMed](#)]
28. Schwaiger, M.; Schoeny, H.; El Abiead, Y.; Hermann, G.; Rampler, E.; Koellensperger, G. Merging metabolomics and lipidomics into one analytical run. *Analyst* **2019**, *144*, 220–229. [[CrossRef](#)] [[PubMed](#)]
29. Grzybek, M.; Palladini, A.; Alexaki, V.I.; Surma, M.A.; Simons, K.; Chavakis, T.; Klose, C.; Coskun, Ü. Comprehensive and quantitative analysis of white and brown adipose tissue by shotgun lipidomics. *Mol. Metab.* **2019**, *22*, 12–20. [[CrossRef](#)] [[PubMed](#)]
30. Schwaiger, M.; Rampler, E.; Hermann, G.; Miklos, W.; Berger, W.; Koellensperger, G.; Schwaiger, M.; Rampler, E.; Hermann, G.; Miklos, W.; et al. Anion-Exchange Chromatography Coupled to High-Resolution Mass Spectrometry: A Powerful Tool for Merging Targeted and Non-targeted Metabolomics. *Anal. Chem.* **2017**, *89*, 7667–7674. [[CrossRef](#)] [[PubMed](#)]
31. Rampler, E.; Schoeny, H.; Mitic, B.M.; El Abiead, Y.; Schwaiger, M.; Koellensperger, G. Simultaneous non-polar and polar lipid analysis by on-line combination of HILIC, RP and high resolution MS. *Analyst* **2018**, *143*, 1250–1258. [[CrossRef](#)] [[PubMed](#)]

32. Chong, J.; Soufan, O.; Li, C.; Caraus, I.; Li, S.; Bourque, G.; Wishart, D.S.; Xia, J. MetaboAnalyst 4.0: Towards more transparent and integrative metabolomics analysis. *Nucleic Acids Res.* **2018**, *46*, W486–W494. [[CrossRef](#)] [[PubMed](#)]
33. Arisawa, K.; Ichi, I.; Yasukawa, Y.; Sone, Y.; Fujiwara, Y. Changes in the phospholipid fatty acid composition of the lipid droplet during the differentiation of 3T3-L1 adipocytes. *J. Biochem.* **2013**, *154*, 281–289. [[CrossRef](#)] [[PubMed](#)]
34. DeLany, J.P.; Floyd, Z.E.; Zvonic, S.; Smith, A.; Gravois, A.; Reiners, E.; Wu, X.; Kilroy, G.; Lefevre, M.; Gimble, J.M. Proteomic analysis of primary cultures of human adipose-derived stem cells. *Mol. Cell. Proteomics* **2005**, *4*, 731–740. [[CrossRef](#)] [[PubMed](#)]
35. Zhou, G.; Xia, J. OmicsNet: A web-based tool for creation and visual analysis of biological networks in 3D space. *Nucleic Acids Res.* **2018**, *46*, W514–W522. [[CrossRef](#)]
36. Fei, W.; Du, X.; Yang, H. Seipin, adipogenesis and lipid droplets. *Trends Endocrinol. Metab.* **2011**, *22*, 204–210. [[CrossRef](#)] [[PubMed](#)]
37. Martin, S.; Parton, R.G. Caveolin, cholesterol, and lipid bodies. *Semin. Cell Dev. Biol.* **2005**, *16*, 163–174. [[CrossRef](#)]
38. Prokesch, A.; Hackl, H.; Hakim-Weber, R.; Bornstein, S.; Trajanoski, Z. Novel Insights into Adipogenesis from Omics Data. *Curr. Med. Chem.* **2009**, *16*, 2952–2964. [[CrossRef](#)]
39. Lu, Q.; Zhang, Y.; Elisseeff, J.H. Carnitine and acetylcarnitine modulate mesenchymal differentiation of adult stem cells. *J. Tissue Eng. Regen. Med.* **2015**, *9*, 1352–1362. [[CrossRef](#)]
40. Tilg, H.; Moschen, A.R. Adipocytokines: Mediators linking adipose tissue, inflammation and immunity. *Nat. Rev. Immunol.* **2006**, *6*, 772–783. [[CrossRef](#)]
41. Ito, K.; Suda, T. Metabolic requirements for the maintenance of self-renewing stem cells. *Nat. Rev. Mol. Cell Biol.* **2014**, *15*, 243–256. [[CrossRef](#)] [[PubMed](#)]
42. Yanes, O.; Clark, J.; Wong, D.M.; Patti, G.J.; Sanchez-ruiz, A.; Paul, H.; Trauger, S.A.; Despons, C.; Ding, S.; Siuzdak, G. Metabolic oxidation regulates embryonic stem cell differentiation. *Nat. Chem. Biol.* **2010**, *6*, 411–417. [[CrossRef](#)] [[PubMed](#)]
43. Shyh-Chang, N.; Daley, G.Q.; Cantley, L.C. Stem cell metabolism in tissue development and aging. *Development* **2013**, *140*, 2535–2547. [[CrossRef](#)] [[PubMed](#)]
44. Kha, H.T.; Basseri, B.; Shouhed, D.; Richardson, J.; Tetradis, S.; Hahn, T.J.; Parhami, F. Oxysterols regulate differentiation of mesenchymal stem cells: Pro-bone and anti-fat. *J. Bone Miner. Res.* **2004**, *19*, 830–840. [[CrossRef](#)] [[PubMed](#)]
45. Roberts, L.D.; Virtue, S.; Vidal-Puig, A.; Nicholls, A.W.; Griffin, J.L. Metabolic phenotyping of a model of adipocyte differentiation. *Physiol. Genomics* **2009**, *39*, 109–119. [[CrossRef](#)] [[PubMed](#)]
46. Mingrone, G.; Greco, A.V.; Capristo, E.; Benedetti, G.; Giancaterini, A.; De Gaetano, A.; Gasbarrini, G. L-Carnitine Improves Glucose Disposal in Type 2 Diabetic Patients. *J. Am. Coll. Nutr.* **1999**, *18*, 77–82. [[CrossRef](#)]
47. Lee, M.S.; Lee, H.J.; Lee, H.S.; Kim, Y. L-carnitine stimulates lipolysis via induction of the lipolytic gene expression and suppression of the adipogenic gene expression in 3T3-L1 adipocytes. *J. Med. Food* **2006**, *9*, 468–473. [[CrossRef](#)]
48. Anheuser, S.; Breiden, B.; Schwarzmann, G.; Sandhoff, K. Membrane lipids regulate ganglioside GM2 catabolism and GM2 activator protein activity. *J. Lipid Res.* **2015**, *56*, 1747–1761. [[CrossRef](#)]
49. Bergante, S.; Torretta, E.; Creo, P.; Sessarego, N.; Papini, N.; Piccoli, M.; Fania, C.; Cirillo, F.; Conforti, E.; Ghirelli, A.; et al. Gangliosides as a potential new class of stem cell markers: The case of GD1a in human bone marrow mesenchymal stem cells. *J. Lipid Res.* **2014**, *55*, 549–560. [[CrossRef](#)]
50. Moussavou, G.; Kwak, D.H.; Lim, M.U.; Kim, J.S.; Kim, S.U.; Chang, K.T.; Choo, Y.K. Role of gangliosides in the differentiation of human mesenchymal-derived stem cells into osteoblasts and neuronal cells. *BMB Rep.* **2013**, *46*, 527–532. [[CrossRef](#)]
51. Nagafuku, M.; Sato, T.; Sato, S.; Shimizu, K.; Taira, T.; Inokuchi, J.I. Control of homeostatic and pathogenic balance in adipose tissue by ganglioside GM3. *Glycobiology* **2014**, *25*, 303–318. [[CrossRef](#)] [[PubMed](#)]
52. Drotleff, B.; Lämmerhofer, M. Guidelines for Selection of Internal Standard-Based Normalization Strategies in Untargeted Lipidomic Profiling by LC-HR-MS/MS. *Anal. Chem.* **2019**, *91*, 9836–9843. [[CrossRef](#)] [[PubMed](#)]
53. AKHTAR, A. The Flaws and Human Harms of Animal Experimentation. *Cambridge Q. Healthc. Ethics* **2015**, *24*, 407–419. [[CrossRef](#)] [[PubMed](#)]

54. Egger, D.; Schwedhelm, I.; Hansmann, J.; Kasper, C. Hypoxic Three-Dimensional Scaffold-Free Aggregate Cultivation of Mesenchymal Stem Cells in a Stirred Tank Reactor. *Bioengineering* **2017**, *4*, 47. [[CrossRef](#)] [[PubMed](#)]
55. Vlassis, N.; Pacheco, M.P.; Sauter, T. Fast Reconstruction of Compact Context-Specific Metabolic Network Models. *PLoS Comput. Biol.* **2014**, *10*. [[CrossRef](#)] [[PubMed](#)]
56. Thiele, I.; Swainston, N.; Fleming, R.M.T.; Hoppe, A.; Sahoo, S.; Aurich, M.K.; Haraldsdottir, H.; Mo, M.L.; Rolfsson, O.; Stobbe, M.D.; et al. A community-driven global reconstruction of human metabolism. *Nat. Biotechnol.* **2013**, *31*, 419–425. [[CrossRef](#)] [[PubMed](#)]
57. Swainston, N.; Smallbone, K.; Hefzi, H.; Dobson, P.D.; Brewer, J.; Hanscho, M.; Zielinski, D.C.; Ang, K.S.; Gardiner, N.J.; Gutierrez, J.M.; et al. Recon 2.2: From reconstruction to model of human metabolism. *Metabolomics* **2016**, *12*, 1–7. [[CrossRef](#)]
58. Domon, B.; Costello, C.E. Structure Elucidation of Glycosphingolipids and Gangliosides Using High-Performance Tandem Mass Spectrometry. *Biochemistry* **1988**, *27*, 1534–1543. [[CrossRef](#)]
59. Koelmel, J.P.; Kroeger, N.M.; Gill, E.L.; Ulmer, C.Z.; Bowden, J.A.; Patterson, R.E.; Yost, R.A.; Garrett, T.J. Expanding Lipidome Coverage Using LC-MS/MS Data-Dependent Acquisition with Automated Exclusion List Generation. *J. Am. Soc. Mass Spectrom.* **2017**, *28*, 908–917. [[CrossRef](#)]

Sample Availability: Samples of the compounds are not available from the authors.



© 2019 by the authors. Licensee MDPI, Basel, Switzerland. This article is an open access article distributed under the terms and conditions of the Creative Commons Attribution (CC BY) license (<http://creativecommons.org/licenses/by/4.0/>).