

Supplementary Information

Selective targeting of the interconversion between glucosylceramide and ceramide by scaffold tailoring of iminosugar inhibitors

Cécile Baudoin-Dehoux,* Tessa Castellan, Frédéric Rodriguez, Arnaud Rives, Fabien Stauffert, Virginie Garcia, Thierry Levade, Philippe Compain* and Yves Génisson*

List of contents

| | | |
|----------------------|---|---|
| Figure S1. | ^1H and ^{13}C NMR spectra of compound 6b ----- | 3 |
| Figure S2 | ^1H and ^{13}C NMR spectra of compound 8 ----- | 4 |
| Figures S3-S8 | IC ₅₀ curves for compounds 5a-5c and 6a, 6b and 8 ----- | 5 |

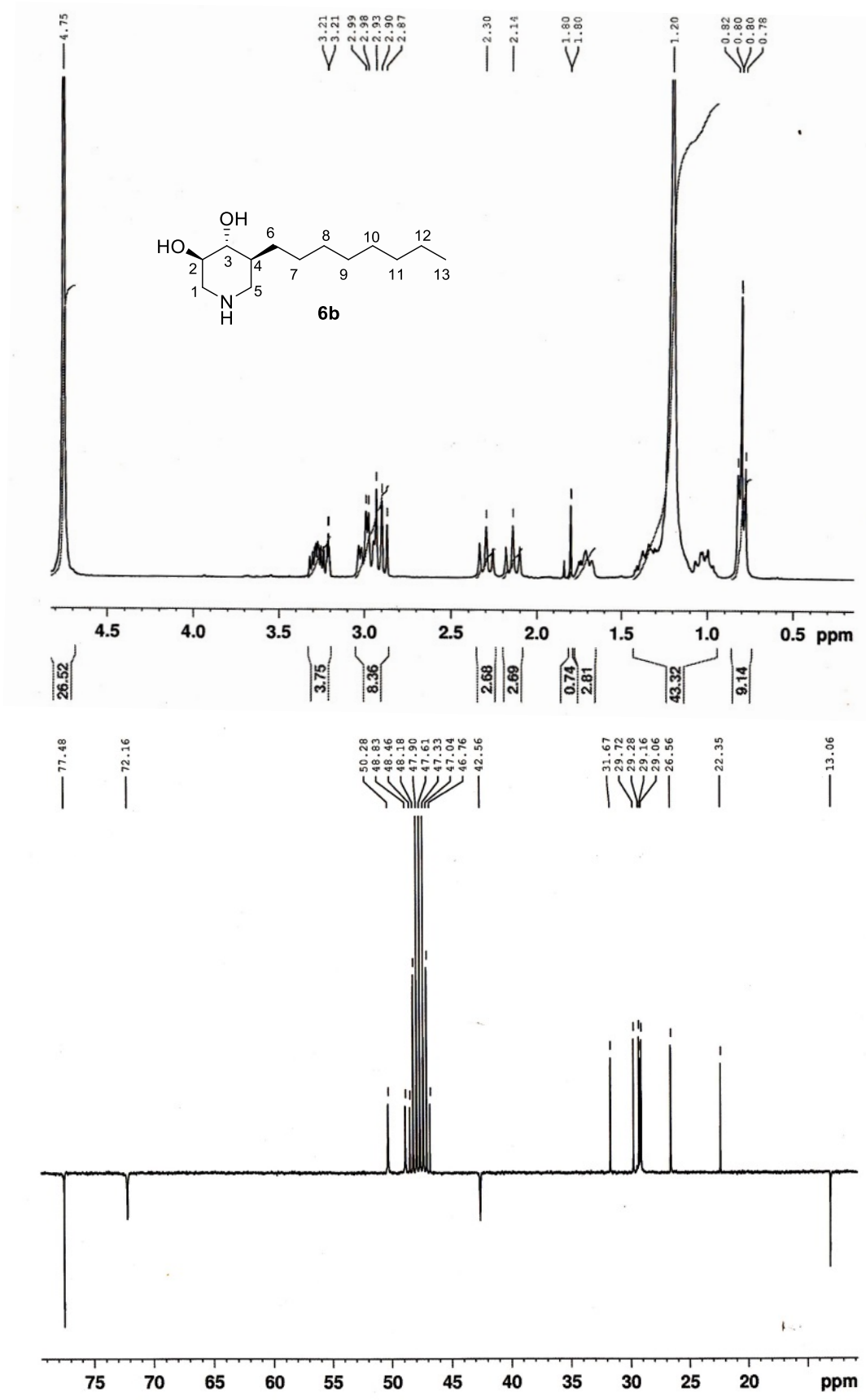


Figure S1. ¹H and ¹³C spectra (300 MHz, 75 MHz, CD₃OD) of **6b**

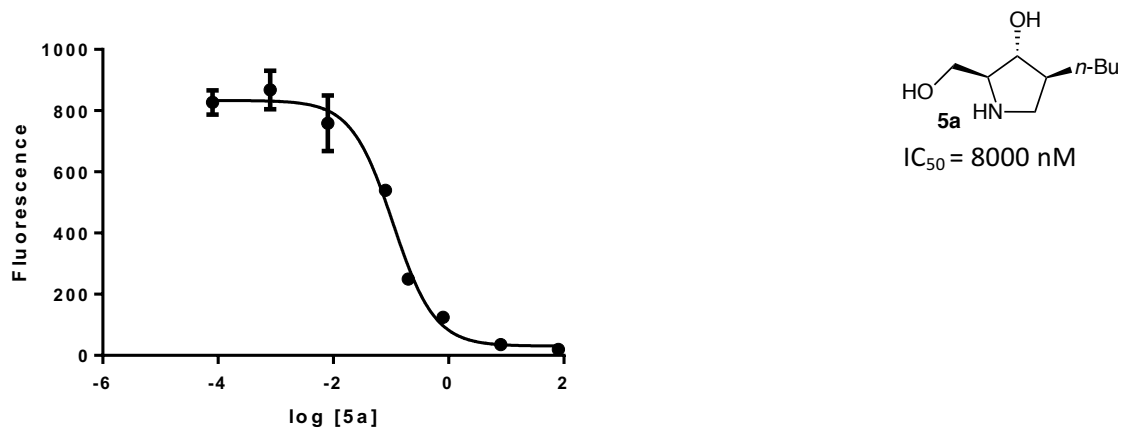


Figure S3: dose-response curve of recombinant GBA inhibition by compound 5a at pH 5.4

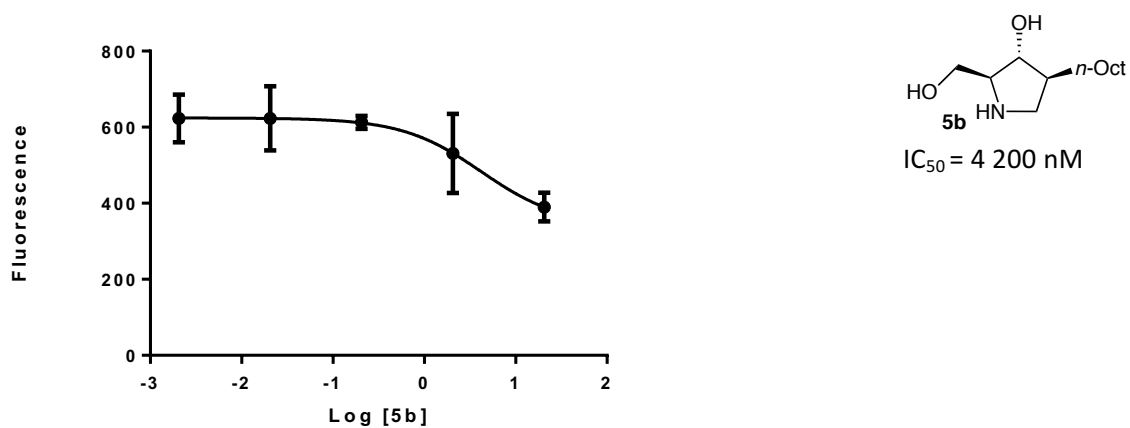


Figure S4: dose-response curve of recombinant GBA inhibition by compound 5b at pH 5.4

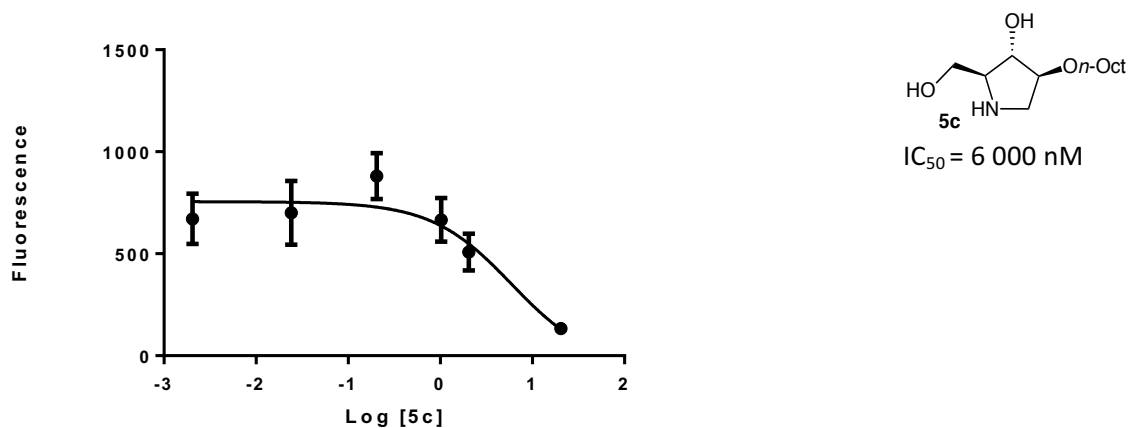


Figure S5: dose-response curve of recombinant GBA inhibition by compound 5c at pH 5.4

