

# Correlation Between the Water solubility and Secondary Structure of Tilapia-Soybean Protein Co-Precipitates

**Li Tan** <sup>1,2,3,4</sup>, **Pengzhi Hong** <sup>1,2,3,4,5</sup>, **Ping Yang** <sup>1,2,3,4</sup>, **Chunxia Zhou** <sup>1,2,3,4,5,\*</sup>, **Dinghao Xiao** <sup>1,2,3,4</sup> and **Tanjun Zhong** <sup>1,2,3,4</sup>

<sup>1</sup> College of Food Science and Technology, Guangdong Ocean University, Zhanjiang 524088, China; tanli\_food@163.com (L.T.); nhs9701@163.com (P.H.); 50299052@163.com (P.Y.); X107205676@163.com (D.X.); jamiezhong@163.com (T.Z.)

<sup>2</sup> Guangdong Provincial Key Laboratory of Aquatic Product Processing and Safety, Zhanjiang 524088, China

<sup>3</sup> Guangdong Provincial Engineering Technology Research Center of Marine Food, Zhanjiang 524088, China

<sup>4</sup> Guangdong Provincial Modern Agricultural Science and Technology Innovation Center, Zhanjiang 524088, China

<sup>5</sup> Southern Marine Science and Engineering Guangdong Laboratory (Zhanjiang), Zhanjiang 524088, China

\* Correspondence: chunxia.zhou@163.com (C.Z.); Tel.: +86-13828262885

Supporting Figures

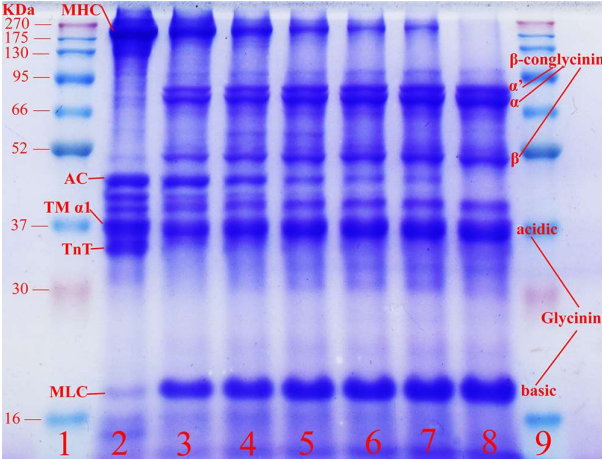
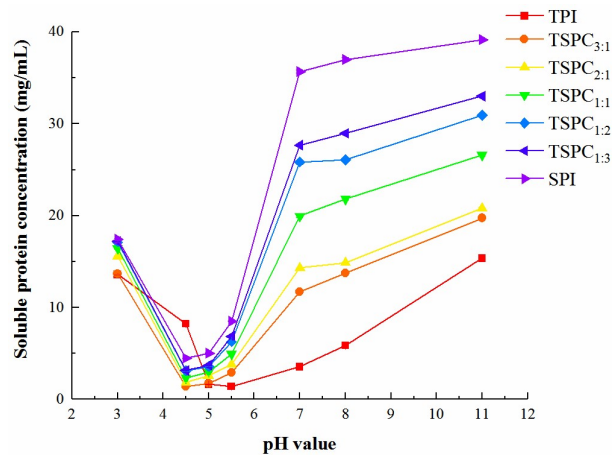


Figure S1. SDS-PAGE of tilapia protein isolate (TPI), tilapia-soybean protein co-precipitates (TSPCs), and soybean protein isolate (SPI).



**Figure S2.** Comparison of soluble protein concentration of tilapia protein isolate (TPI), tilapia-soybean protein co-precipitates (TSPCs), and soybean protein isolate (SPI) at different pH value.

**Supporting Table**

**Table S1.** Protein content (g/100g) of tilapia protein isolate (TPI), tilapia-soybean protein co-precipitates (TSPCs), and soybean protein isolate (SPI).

Items	TPI	TSPC <sub>3:1</sub>	TSPC <sub>2:1</sub>	TSPC <sub>1:1</sub>	TSPC <sub>1:2</sub>	TSPC <sub>1:3</sub>	SPI
Protein content	95.93 ± 0.72 <sup>a</sup>	94.24 ± 0.57 <sup>b</sup>	92.76 ± 0.83 <sup>c</sup>	92.67 ± 0.51 <sup>c</sup>	92.05 ± 0.74 <sup>c</sup>	90.84 ± 0.13 <sup>d</sup>	90.68 ± 0.32 <sup>d</sup>

Different letters indicate significant differences ( $p < 0.05$ ).