

COMPOUND 1

Figures	Spectra
Figure S1	(+) ESIMS
Figure S2	(-) ESIMS
Figure S3	^1H NMR
Figure S4	^{13}C NMR
Figure S5	DEPT
Figure S6	HSQC
Figure S7	HMBC
Figure S8	COSY ^1H - ^1H

C:\Users\Lenta...520_BIBAS_01.d\Injection 1 OC3 LentaBr_05...d, + MS Profile MS + spectrum 0.00

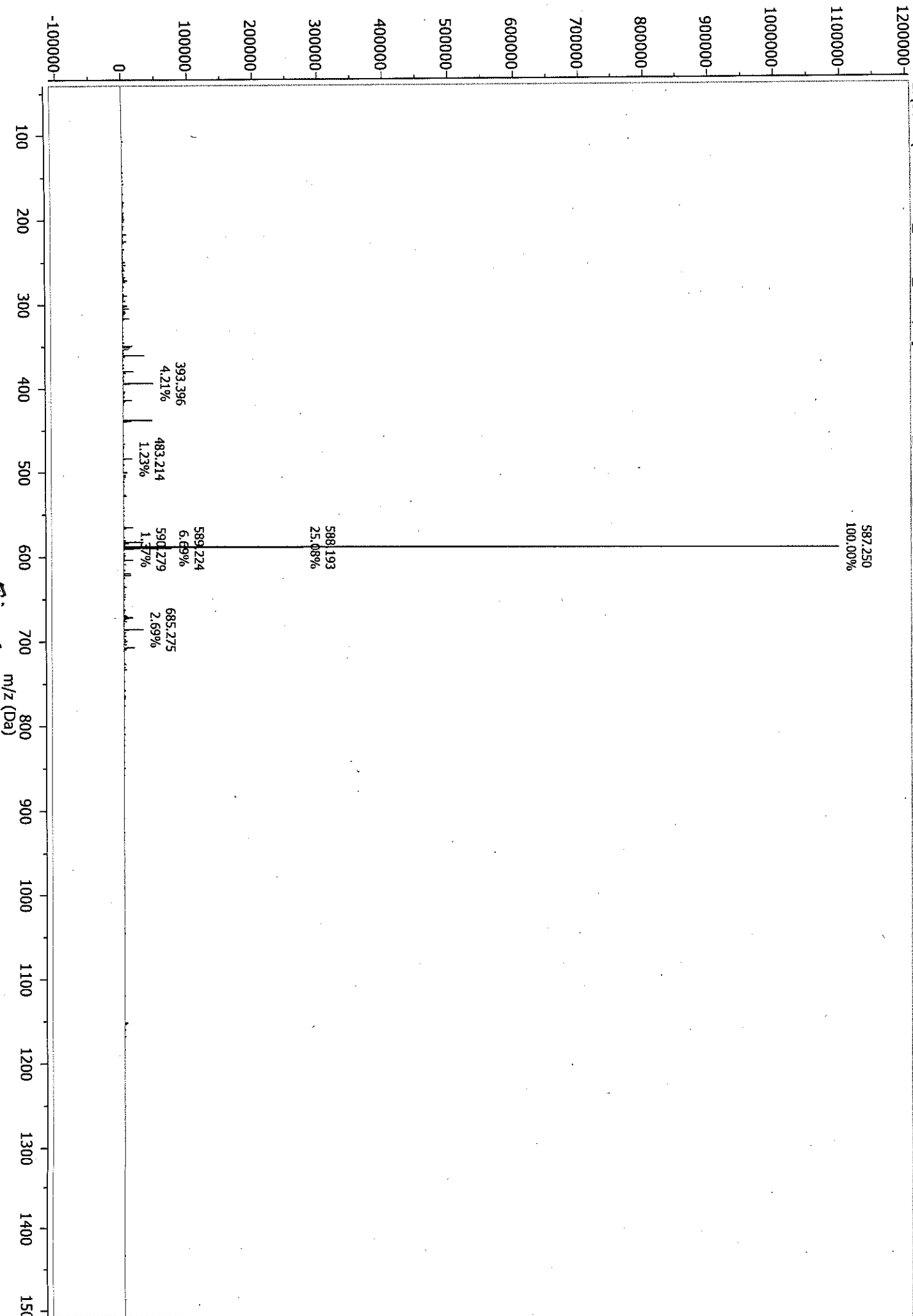


Fig. SA

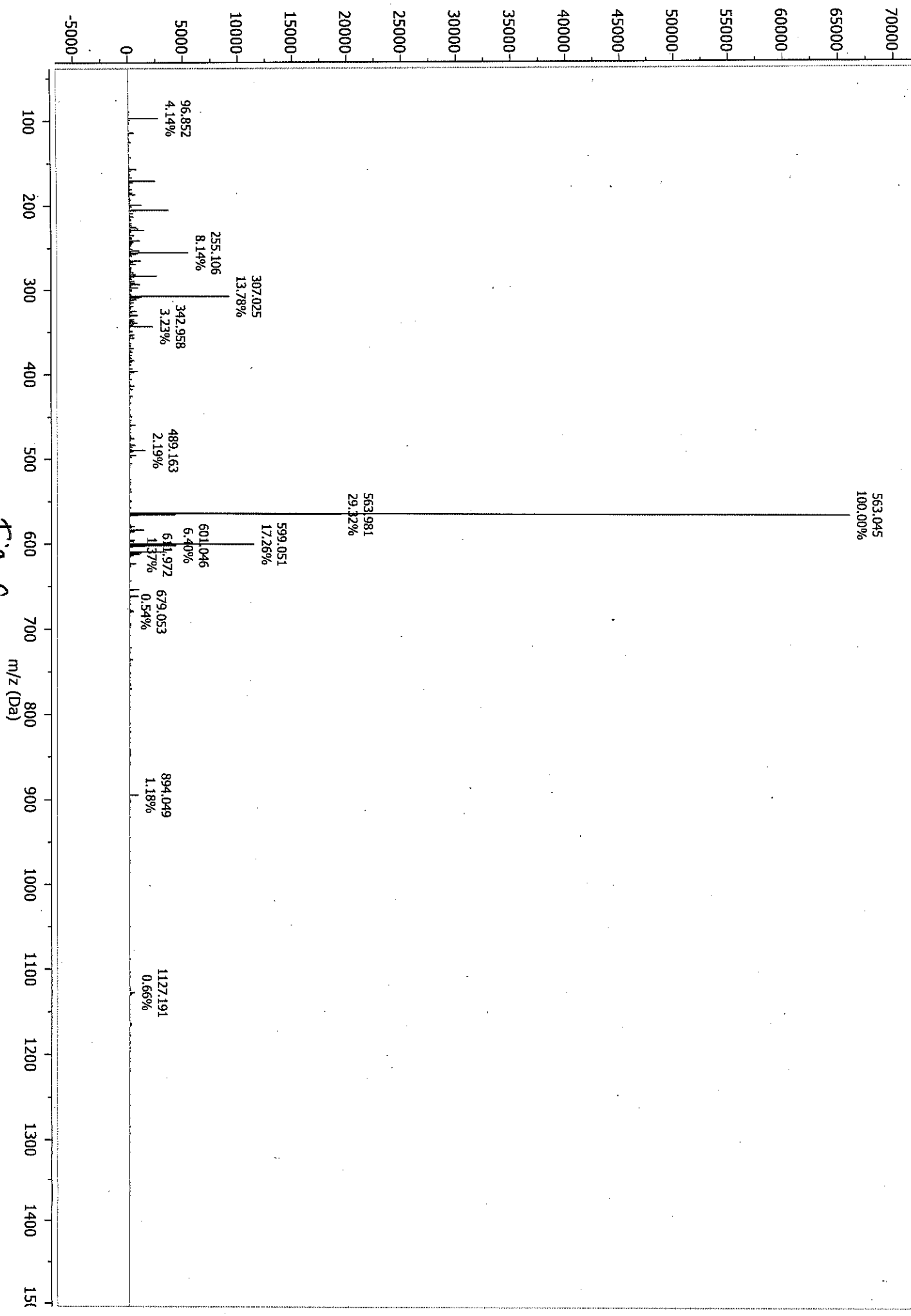


Fig. 52

OC3_Lentabr_0425_BLBAS_0119
 Br: Lentabr, OC3, BLBAS
 PROTON DMSO (C:\Bruker\logsp33.0) Service

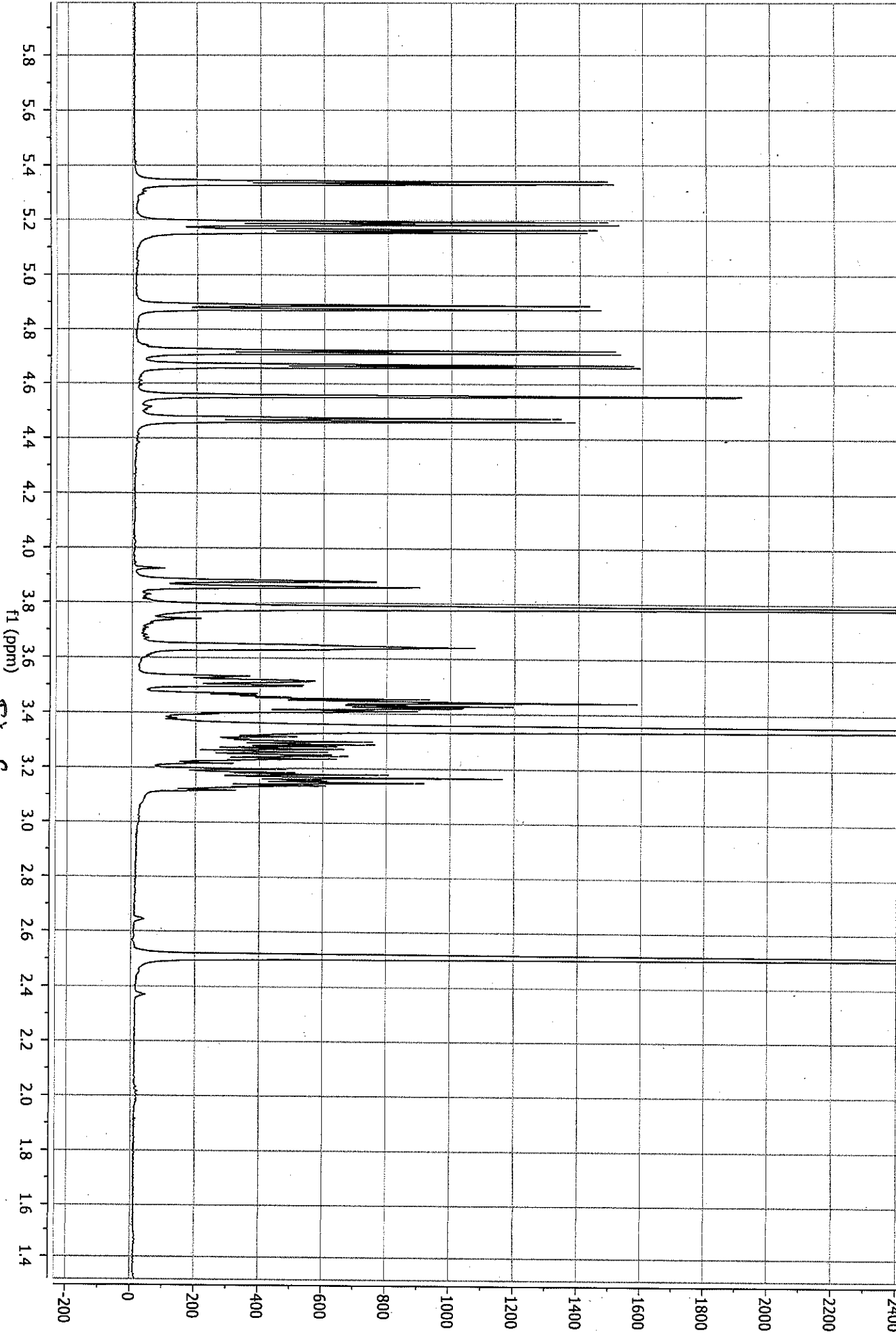


Fig 5g

OC3_Lentabi_0425_BLBAS110.fid
Br. Lenta, OC3_BLBAS
PROTON DMSO (C:\Bruker\Topspln3\QYService 26

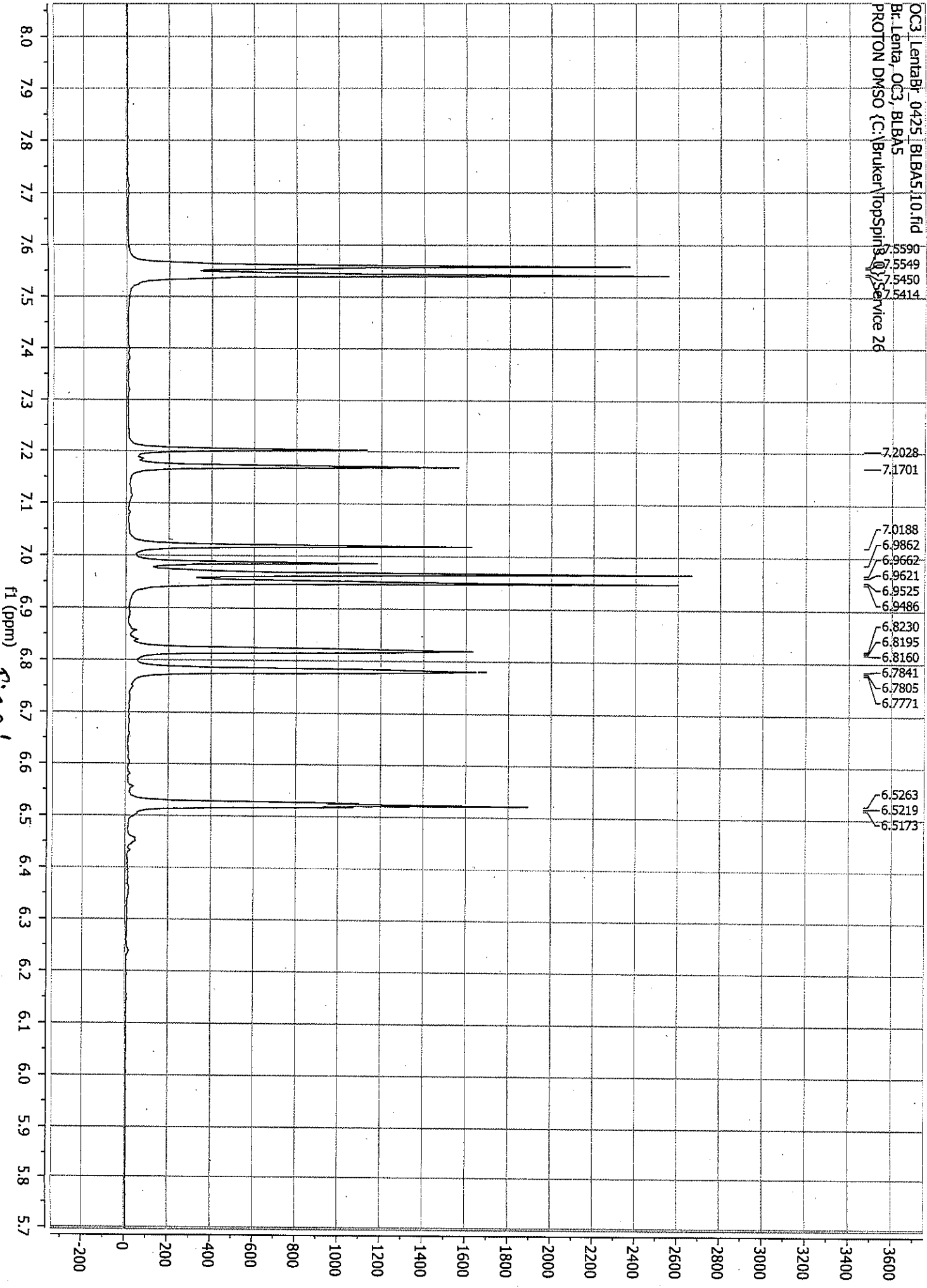


Fig 58'

OC3_Lentabr_0426_BLBAS_20.fid
Br. Lentabr, OC3, BLBAS
C13CPD DMSO (C:\Bruker\TopSpin3.0) Service 44

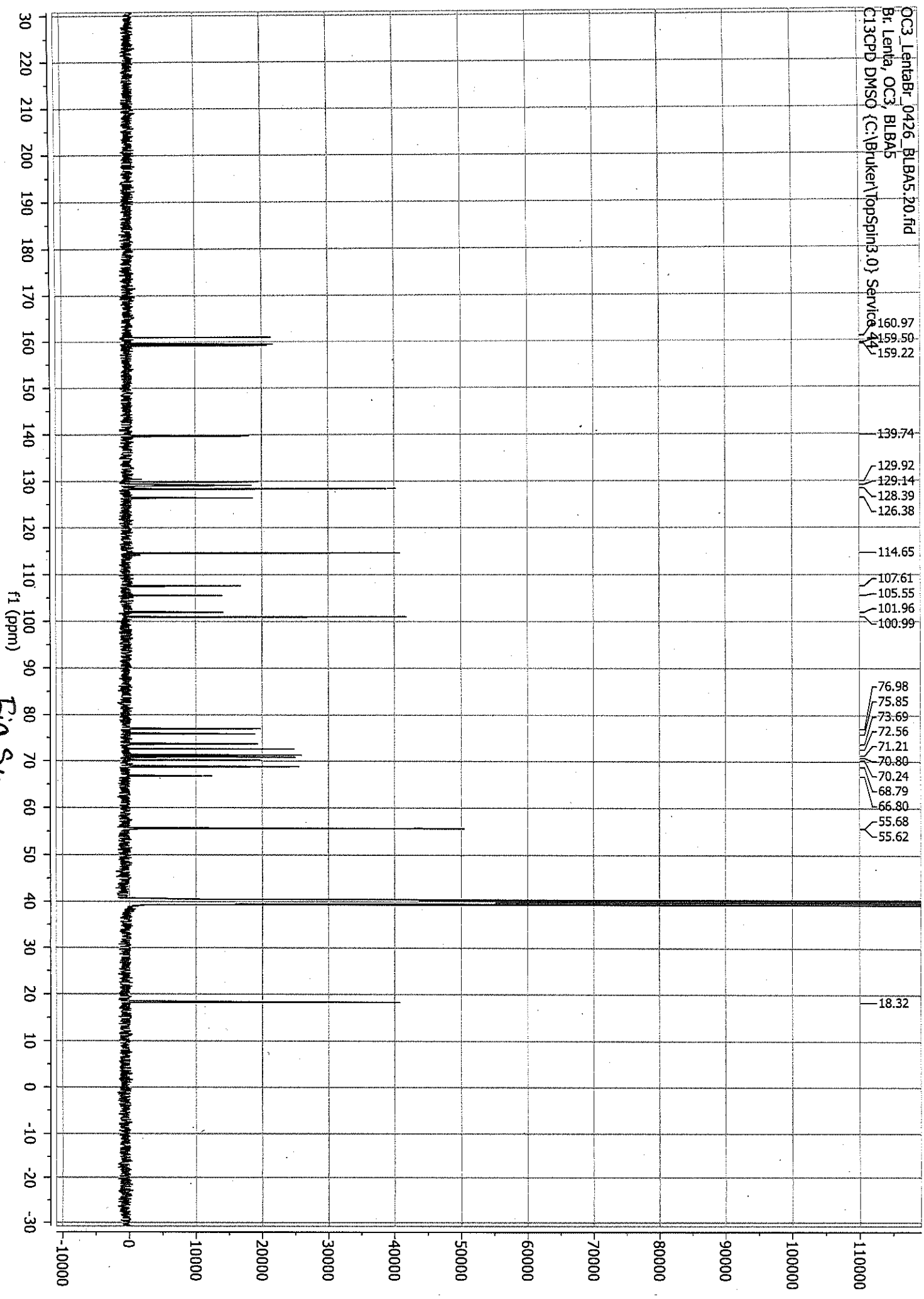


Fig 54

OC3_Lentabr_94288.BA5.21.fid
Br. Lentabr. OC35281.BA5
C13DEPT135 DW50 (C:\Bruker\TopSpin3.0\Sevice4)

114.69
107.61
105.55
101.96
100.99
76.98
75.85
73.69
72.56
71.21
70.80
70.24
68.79
66.80

55.68
55.62

18.32

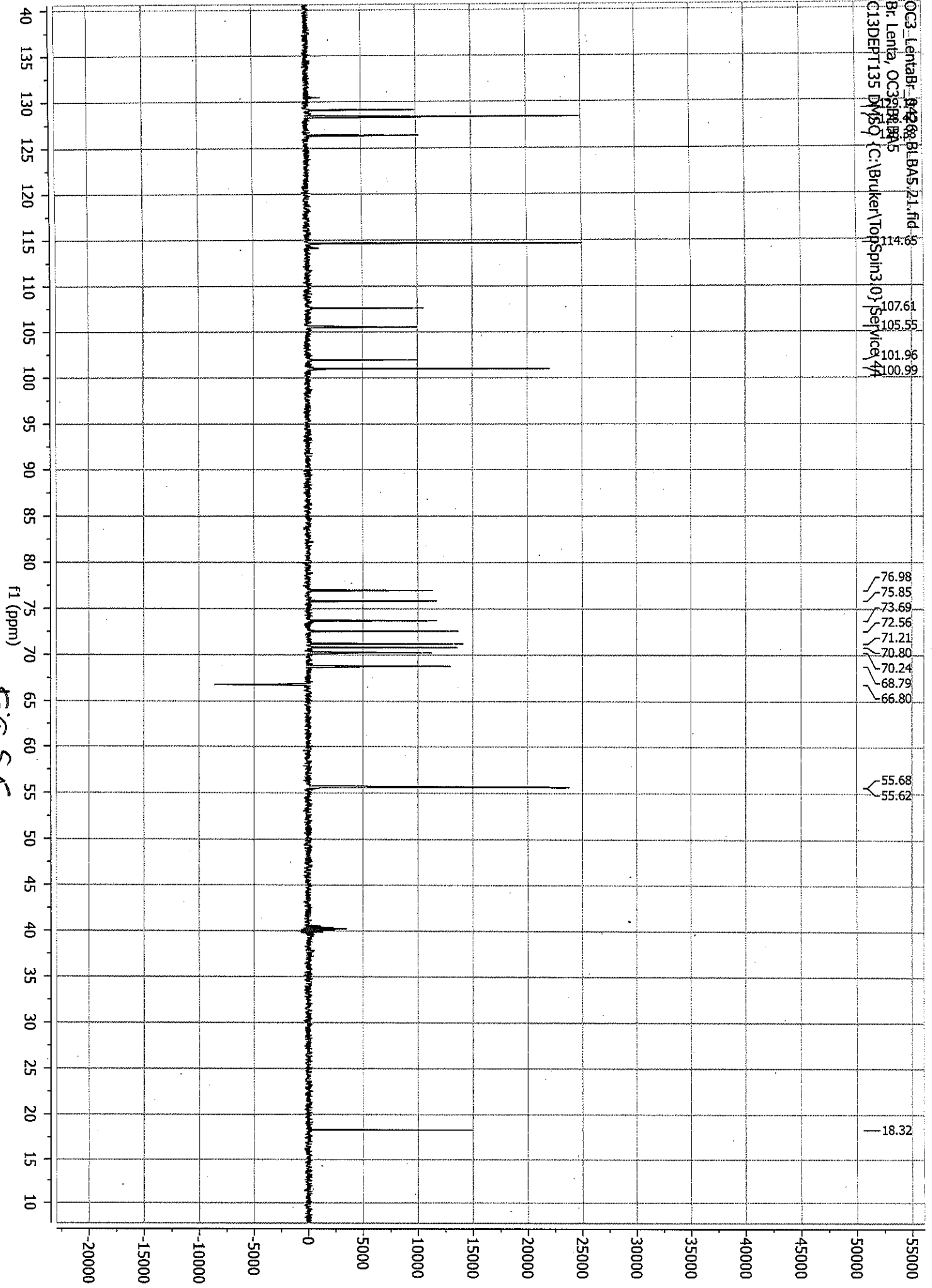
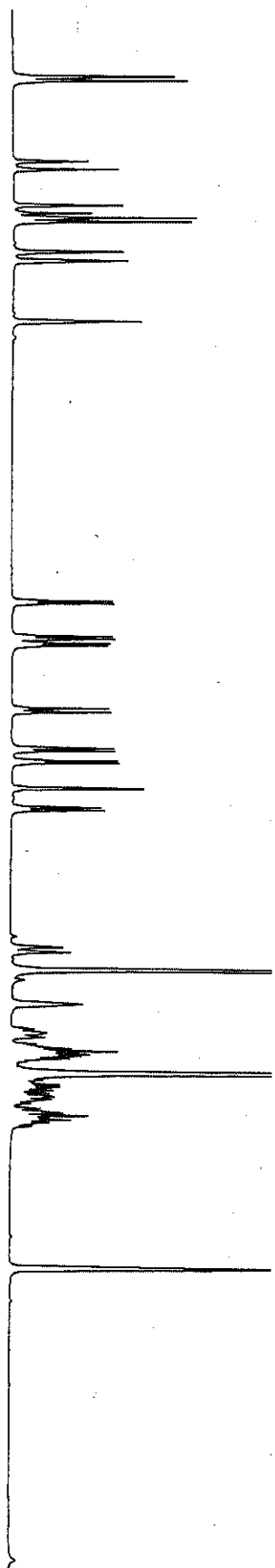


Fig 55



OC3_Lentabr_0426_BLBAS.11.ser
Br Lentabr, OC3, BLBAS
HMOCGP DMSO {C:\Bruker\Topspin3.0} Service 31

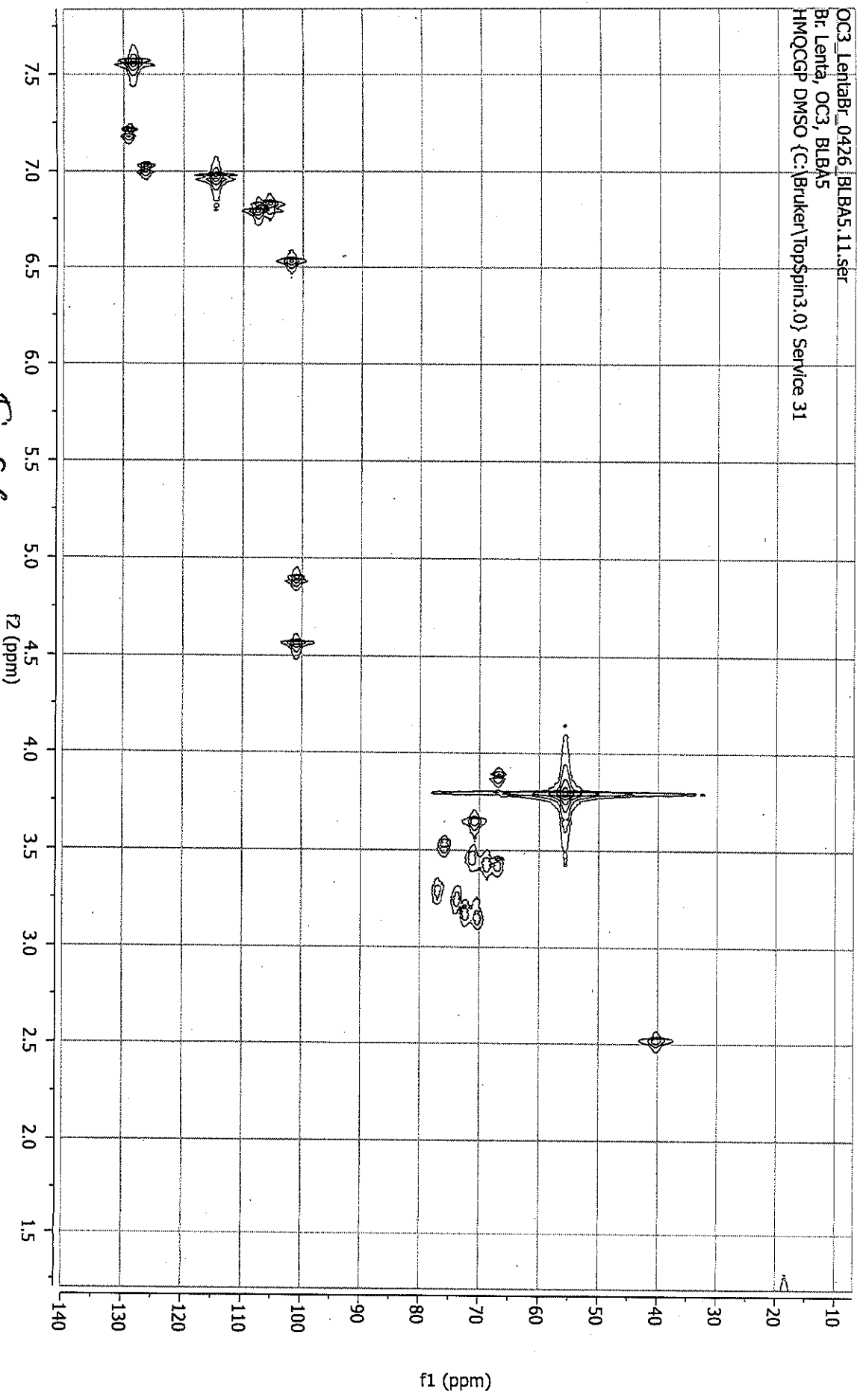
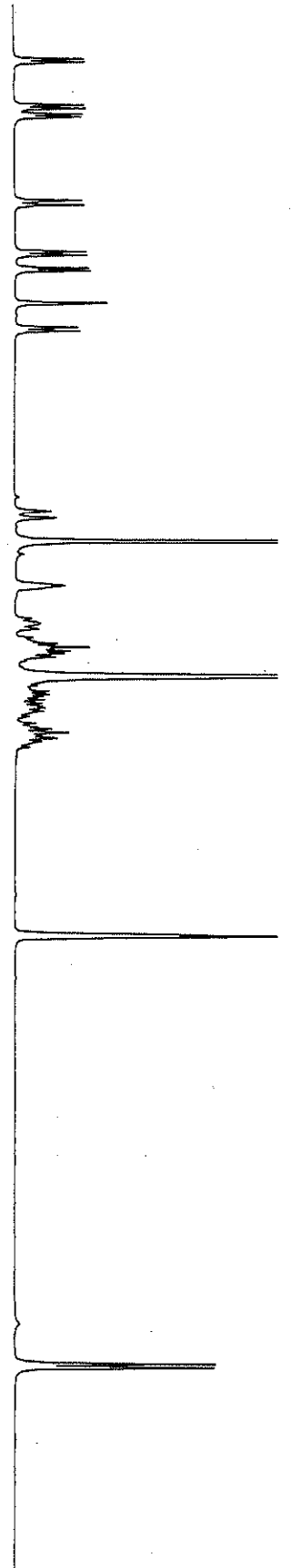


Fig 56



OC3_Lentabr_0426_BLBAS.12.ser
Br-Lenta, OC3, BLBAS
HMBCGPND DMSO {C:\Bruker\TopSpin3.0} Service 31

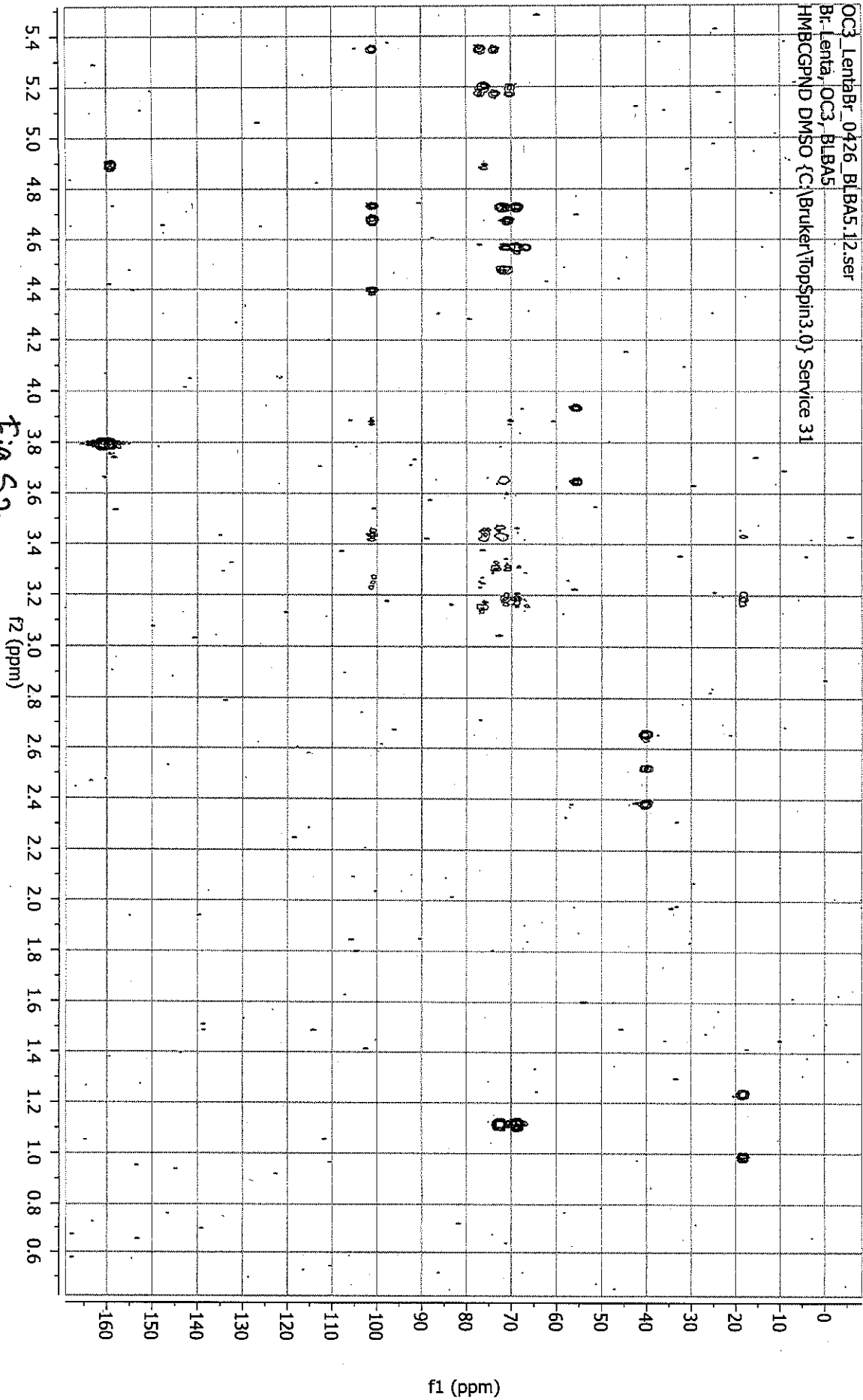
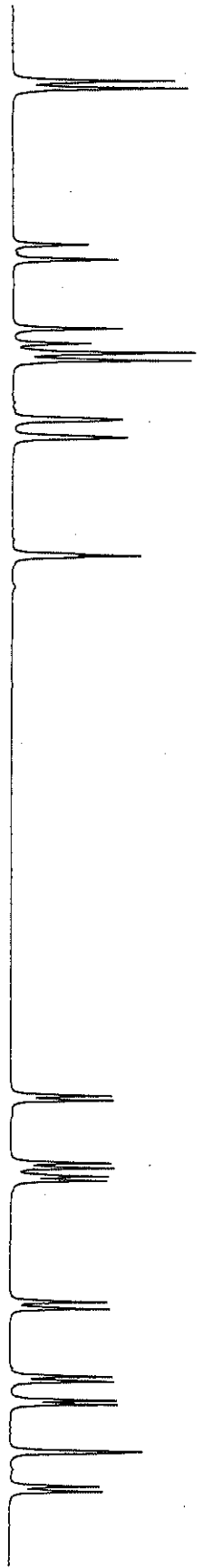
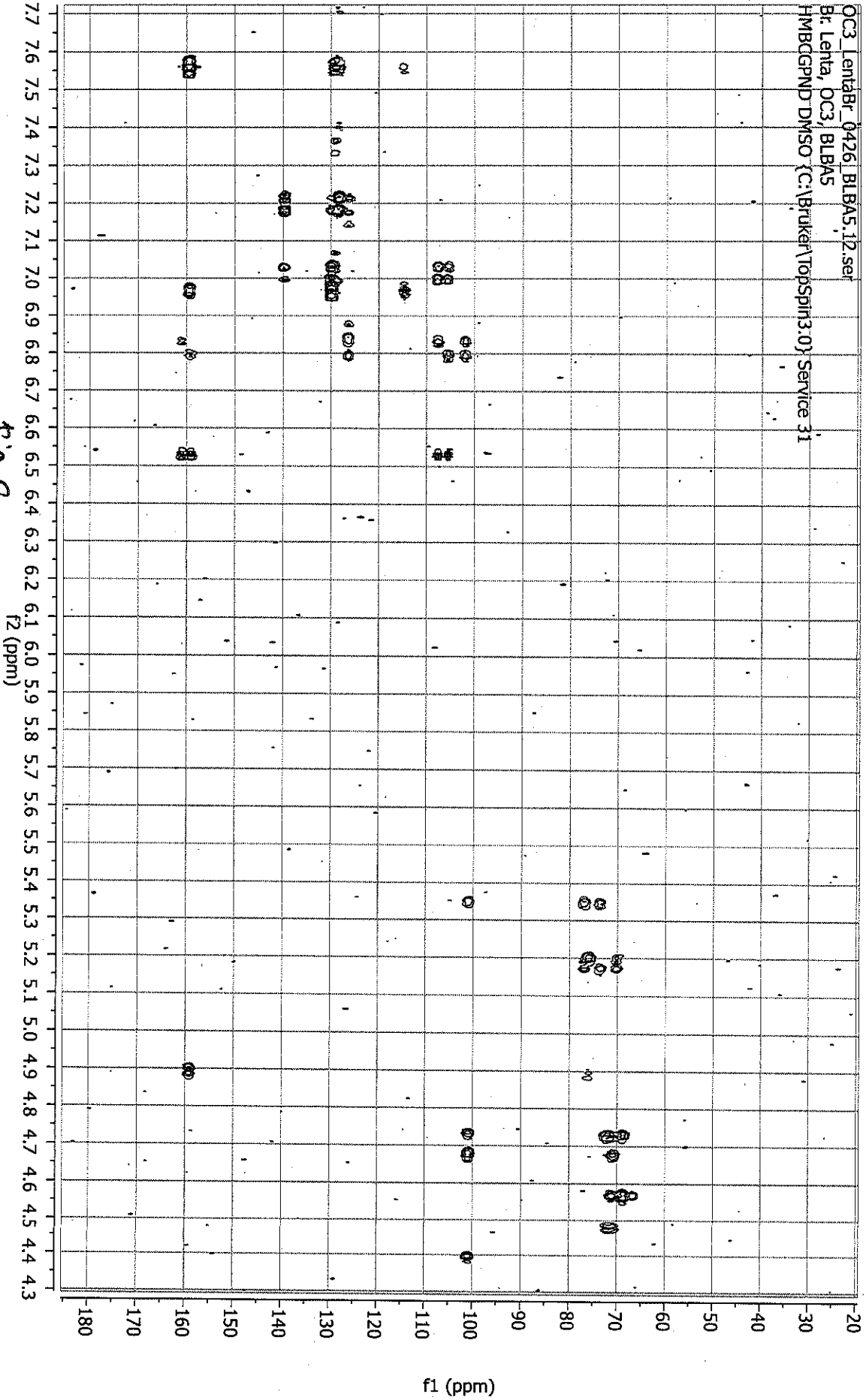


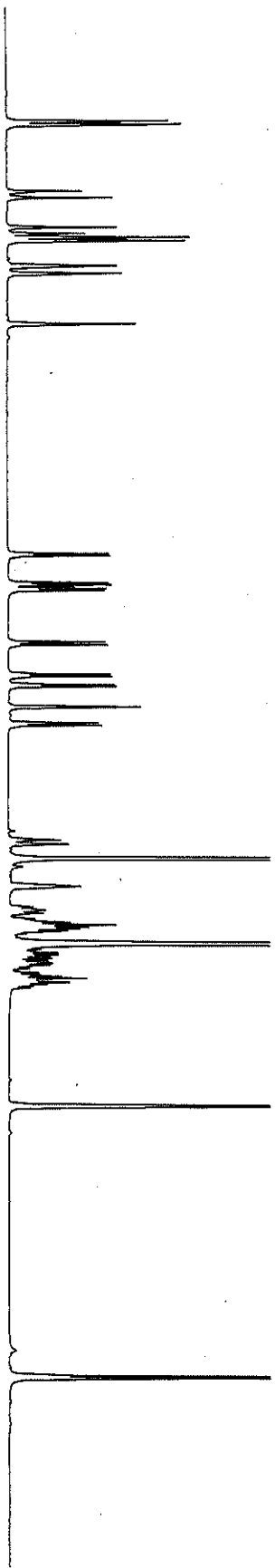
Fig 57



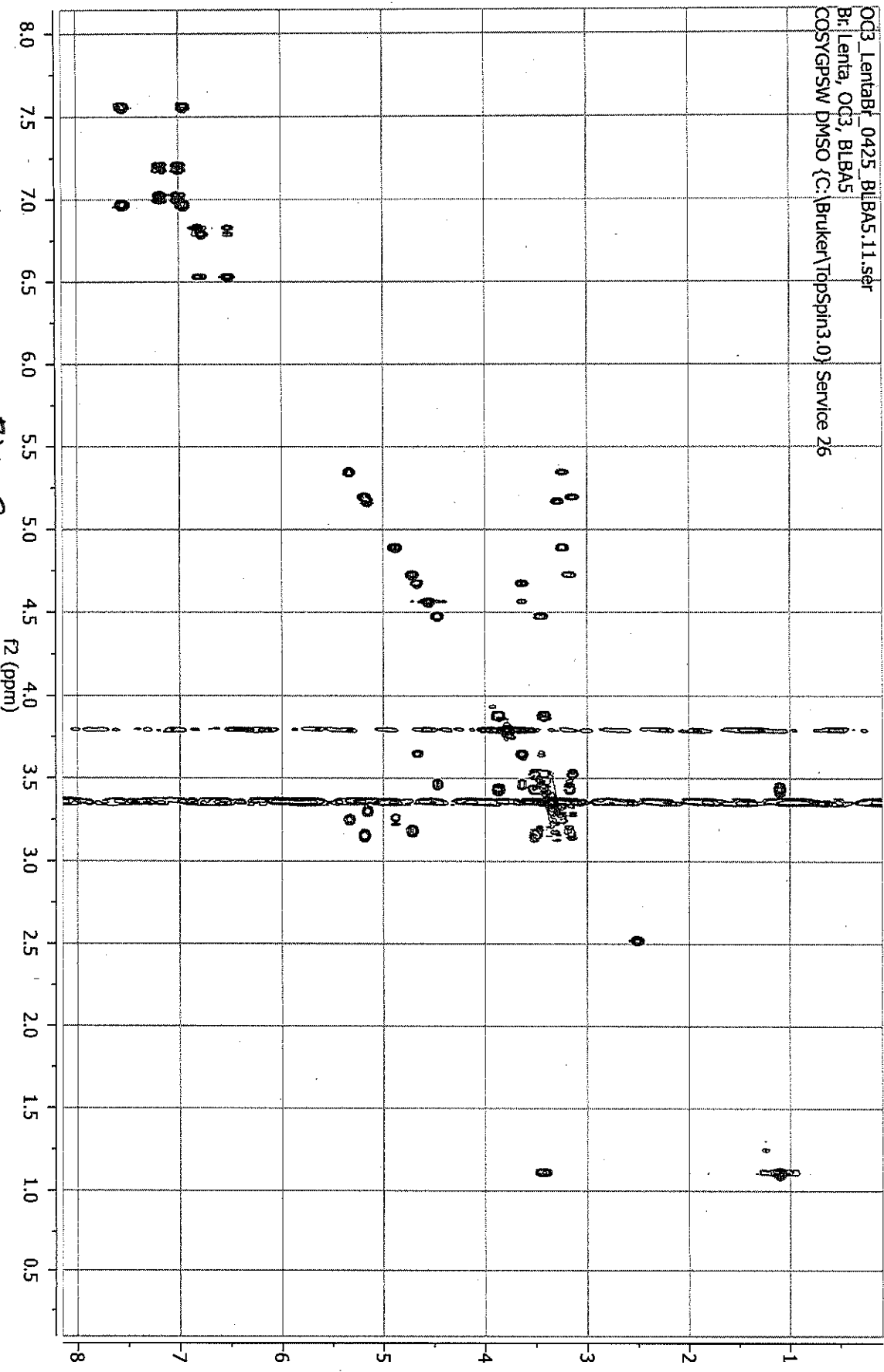
OC3_Lentabr_04261.BLBAS.i2 ser
Br: Lentabr, OC3, BLBAS
HMBGPN2.DMSO (C:\Bruker\TopSpin3.0) Service 31



POS2



OC3_Lentabf_0425_BLBAS.11.scr
Br. Lenta, OC3, BLBAS
COSYGPSW DMSO (C:\Bruker\TopSpin3.0) Service 26



f1 (ppm)

f2 (ppm)

Fig 58

COMPOUND 3

Figures	Spectra
Figure S9	(+) ESIMS
Figure S10	^1H NMR
Figure S11	^{13}C NMR
Figure S12	HSQC
Figure S13	HMBC
Figure S14	COSY ^1H - ^1H

Analysis Report Spectrum

Analysis Info

Analysis Name: OC3_LammangAL_1024
Method: Tune-nan.MS
Workgroup: 30C

Comment: Al. Lammang, OC3

Esquire 3000



Operator: S. Heikamp
Acquisition Date: 28.10.2019 10:17:48
Print Date: 28.10.2019 11:43:28

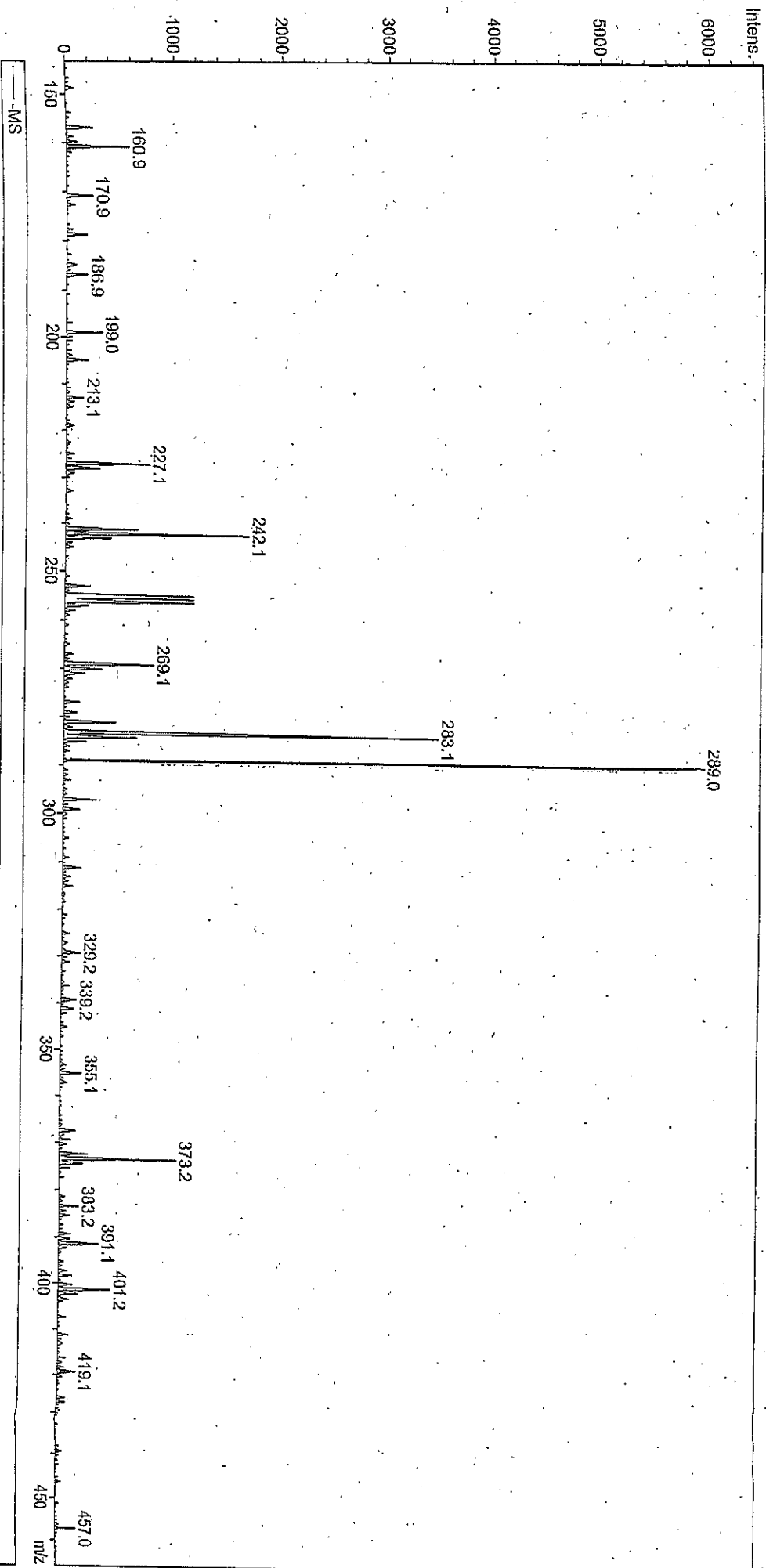


Fig 5g

JDWBA4
PROTON.1jmu CDCl3 (C:\Bruker\TopSpin3.2p17) pacifisma 1

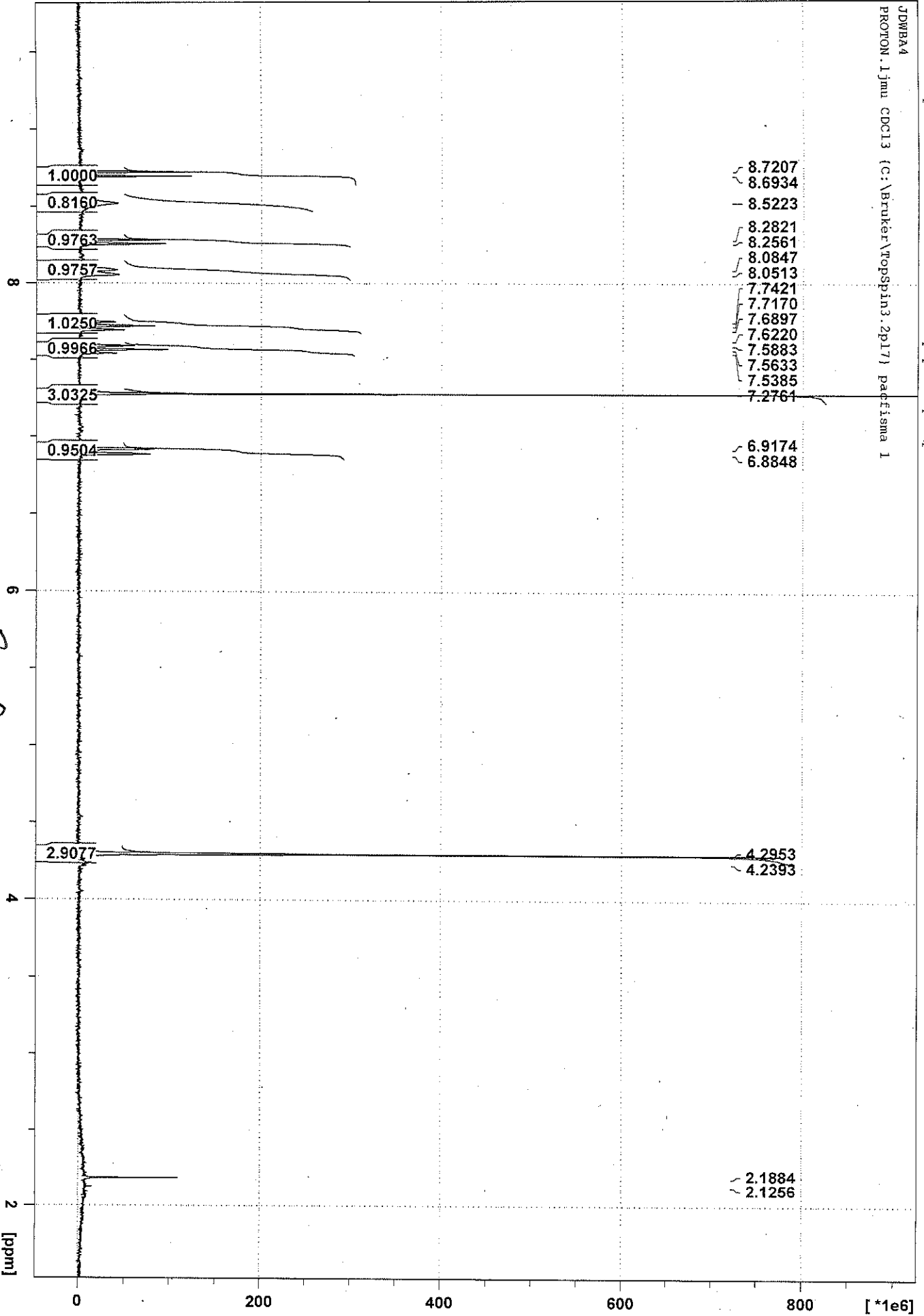


Fig S10

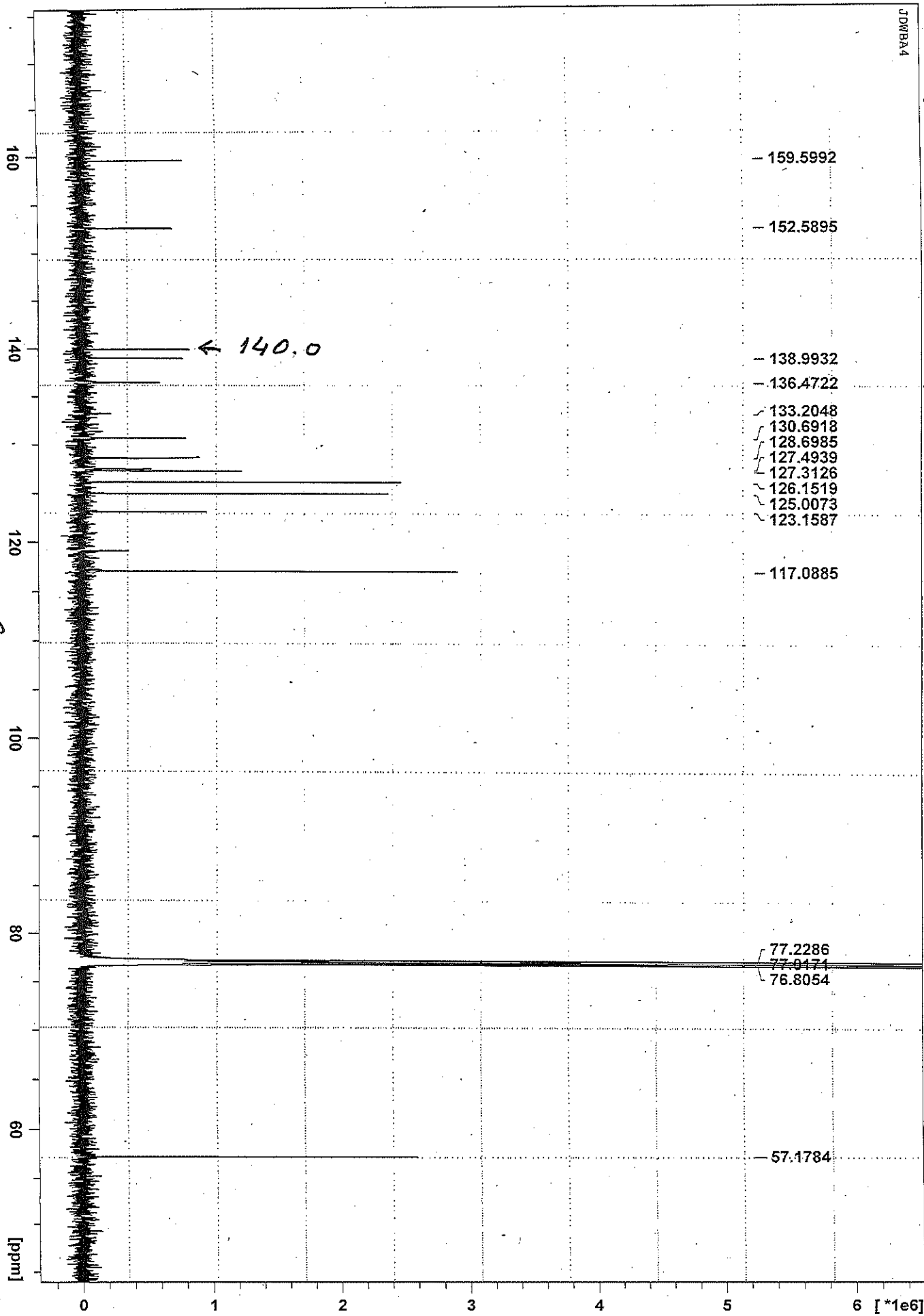
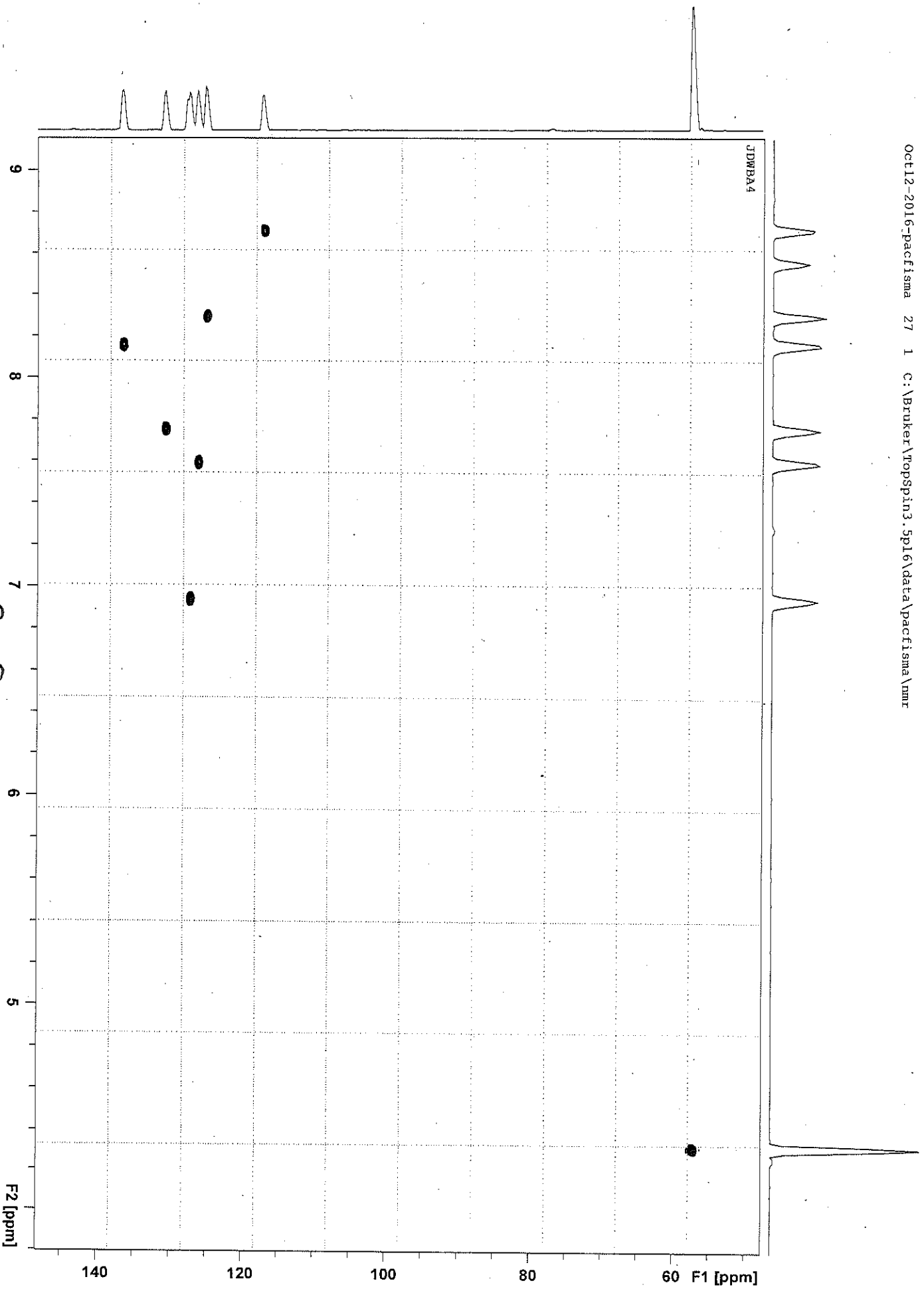


Fig 5M



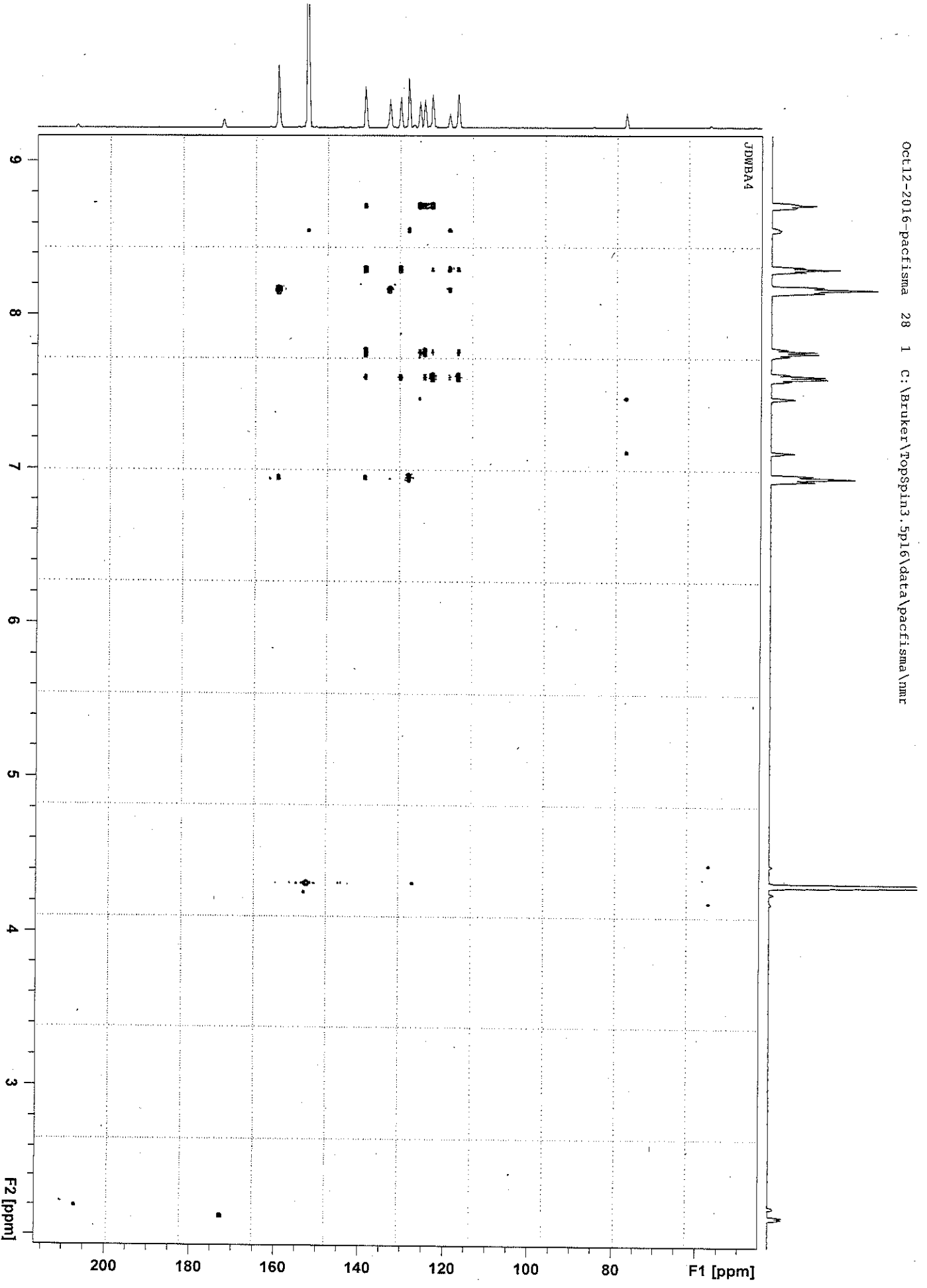


Fig 3 13

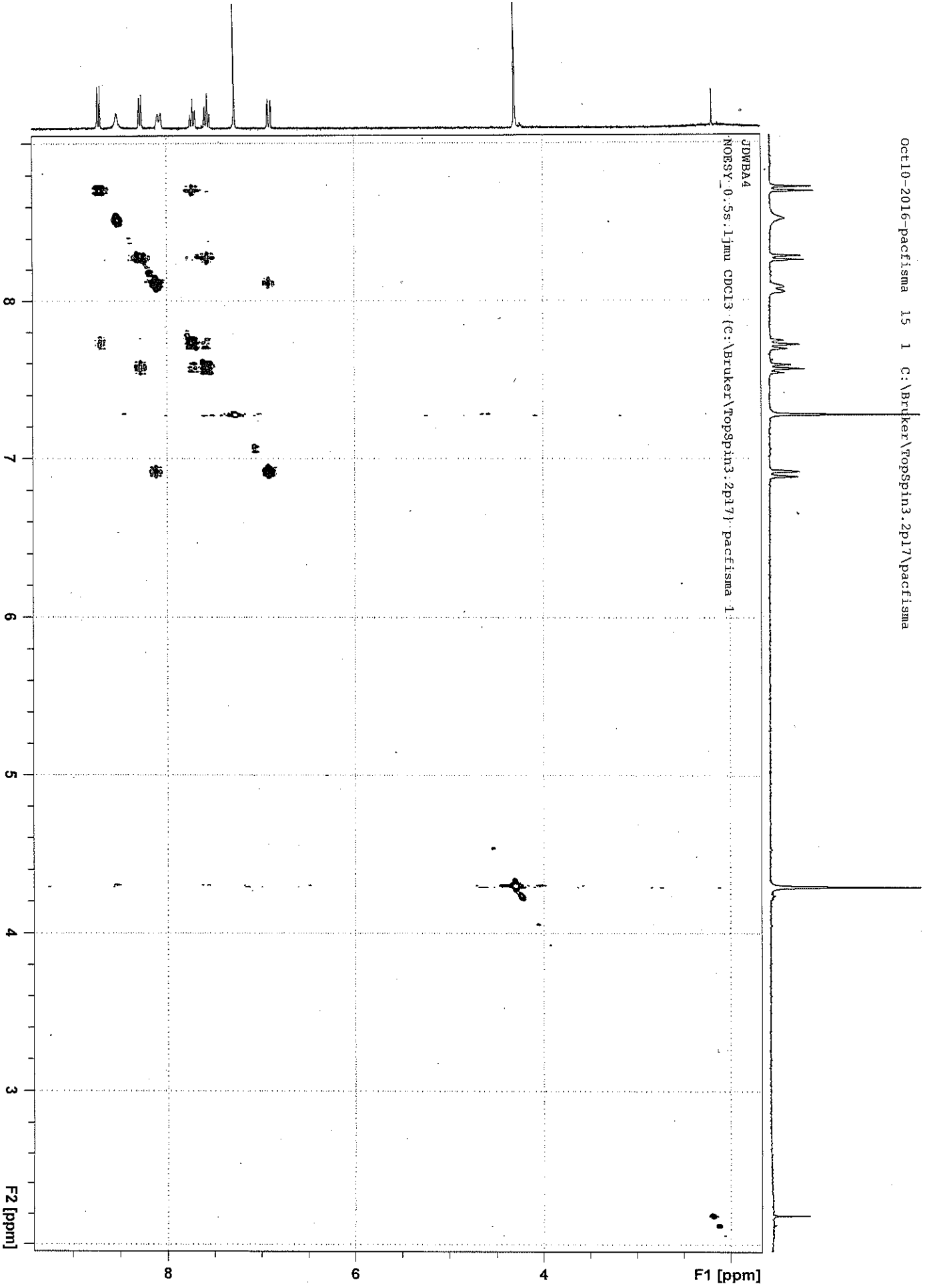


Fig S14

COMPOUND 4

Figures	Spectra
Figure S15	(+) ESIMS
Figure S16	^1H NMR
Figure S17	^{13}C NMR
Figure S18	HMBC
Figure S19	HSQC
Figure S20	COSY ^1H - ^1H

Analysis Report Spectrum

Analysis Info

Analysis Name OC3_Tadlong-TchoA1_1002
Method Tune-nan.MS
Workgroup 30C
Comment AL, Tadlong-Tcho, OC3

Esquire 3000



Operator S.Helkamp
Acquisition Date 09.10.2019 11:17:08
Print Date 09.10.2019 12:17:30

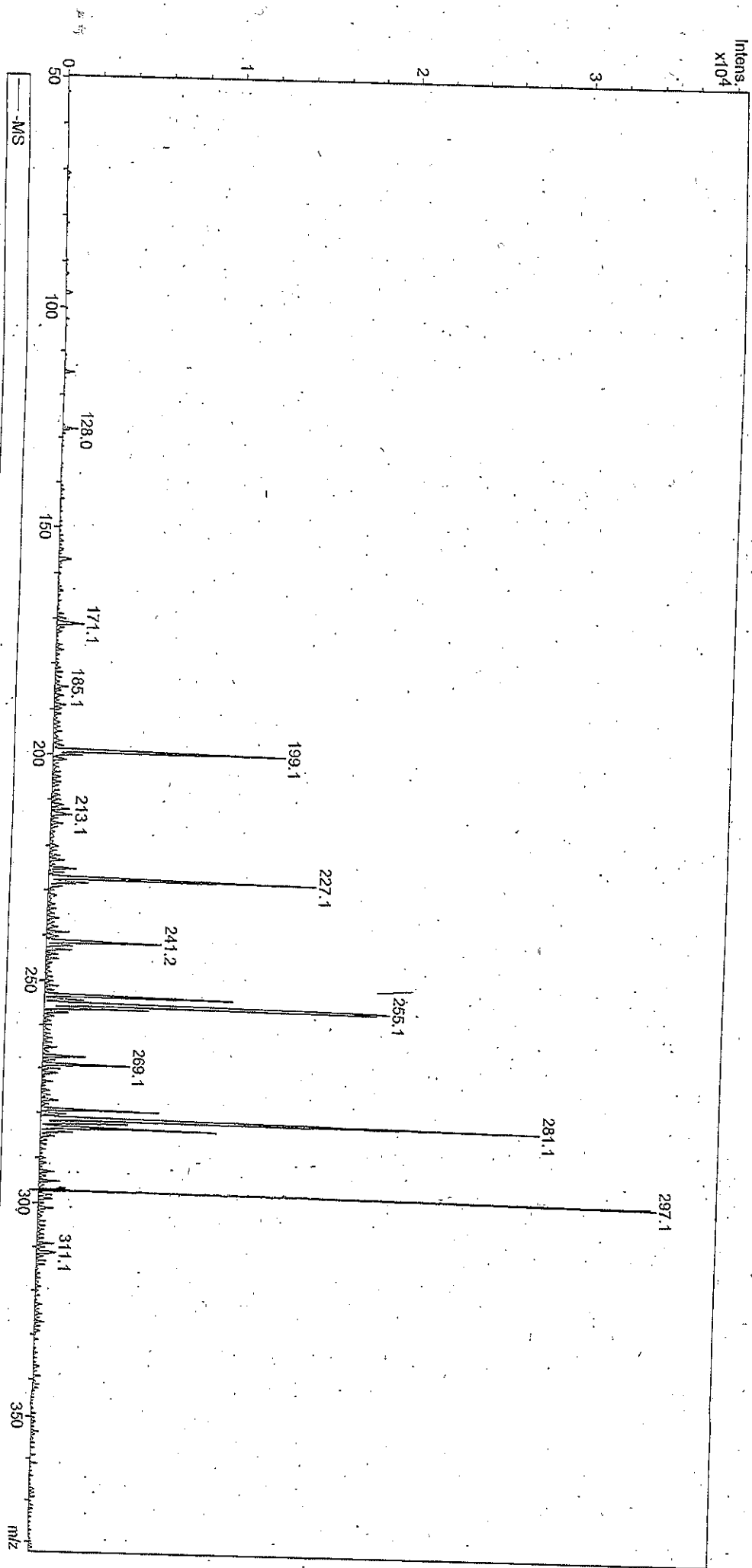


Fig S15

JDWBA5

PROTON 1jmu CDCl3 (C:\Bruker\TopSpin3.2p17) pbssguet 3

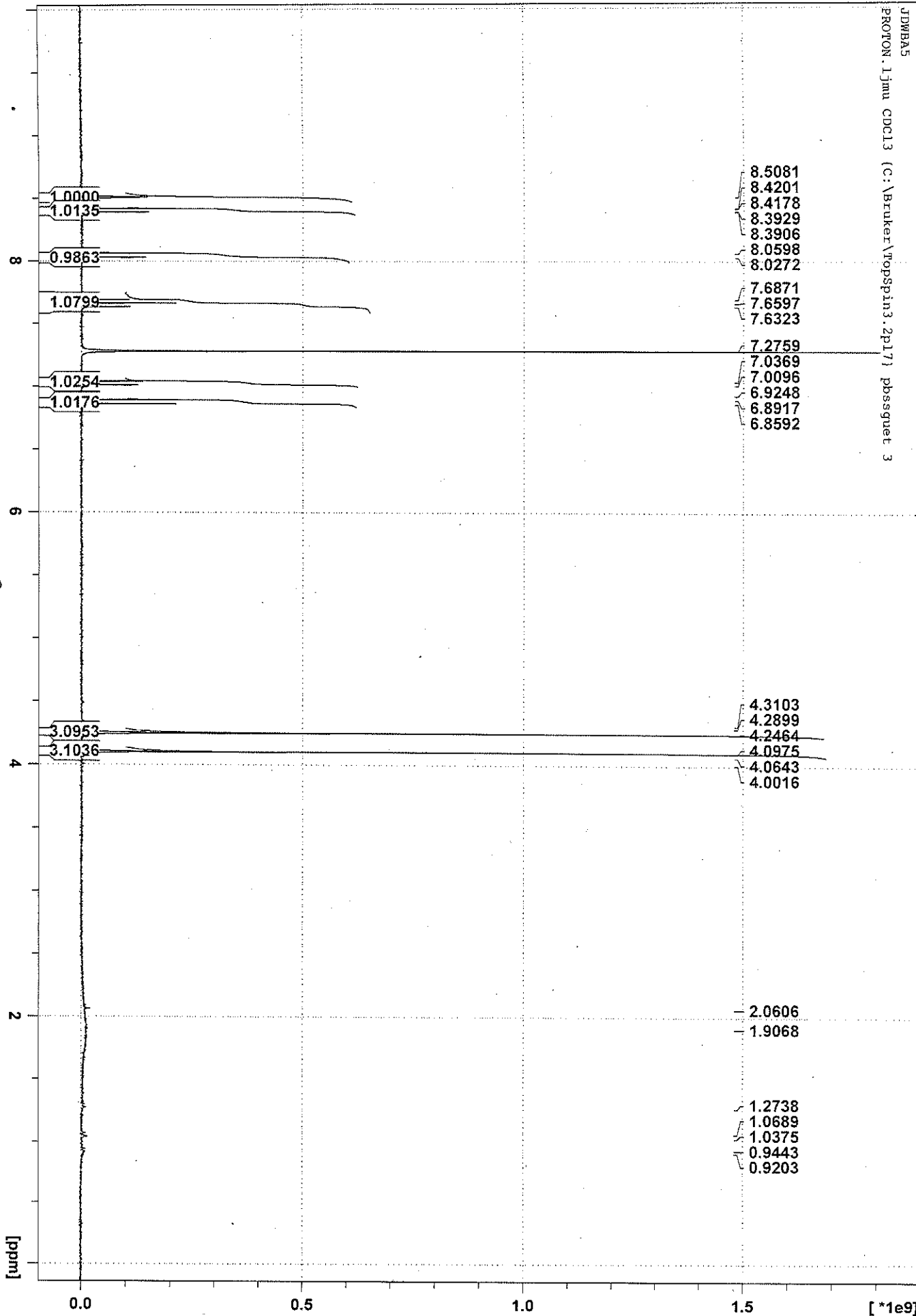


Fig 5/16

JDWBAS
Carbon, Icon CDCl3 (C:\Bruker\Topspin3.5p16) PBSJWANS 1

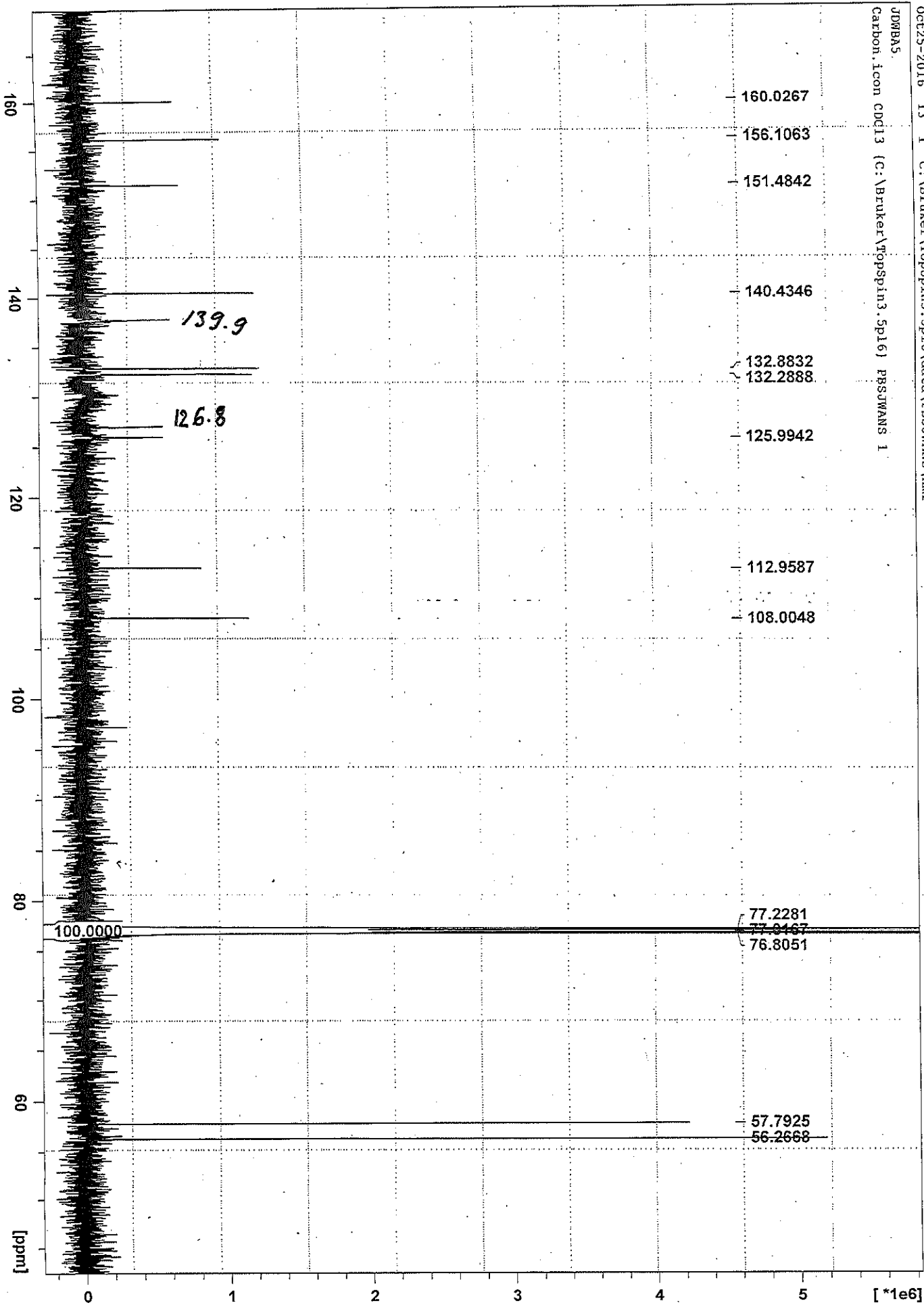


Fig 5 NT

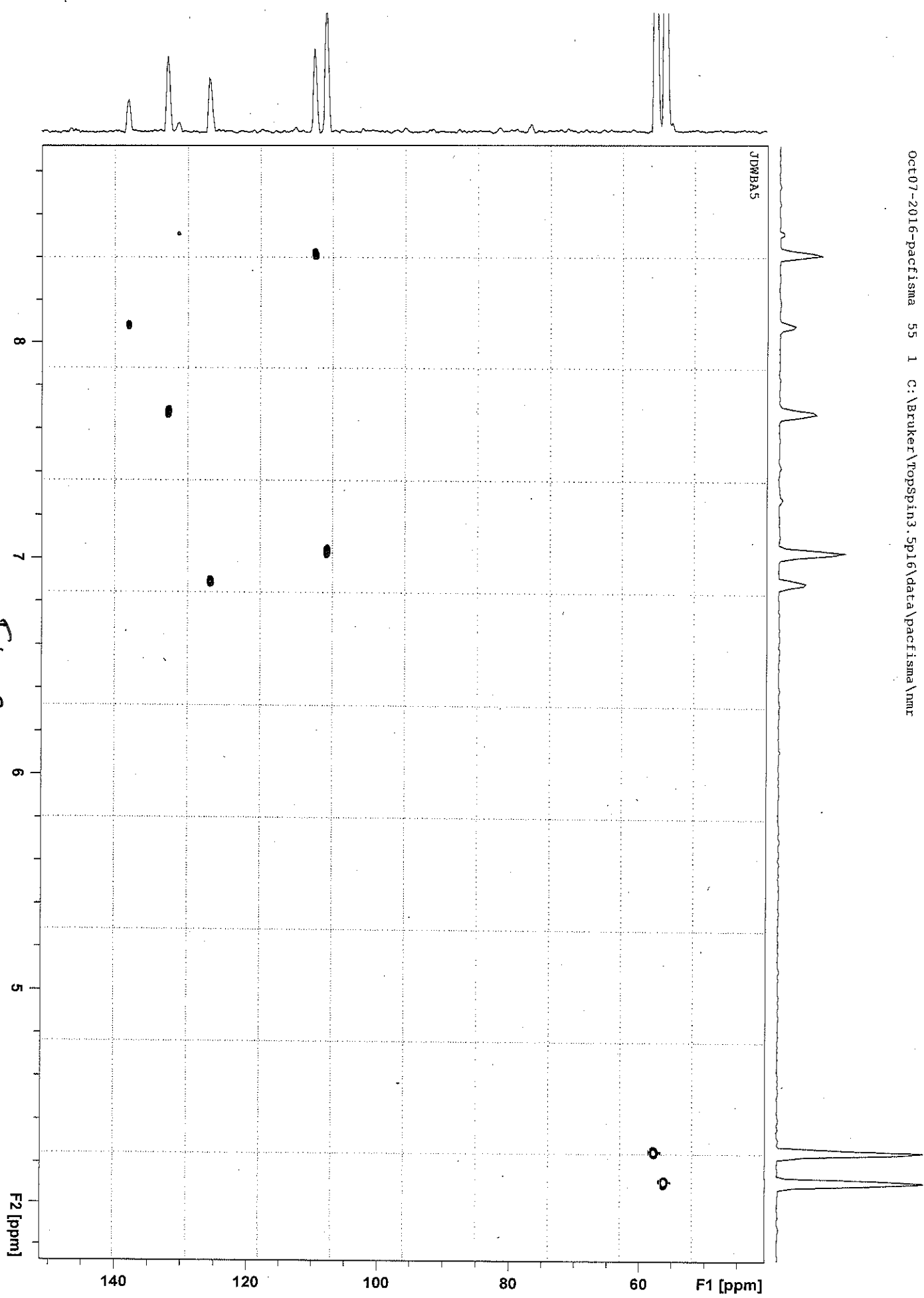


Fig S18

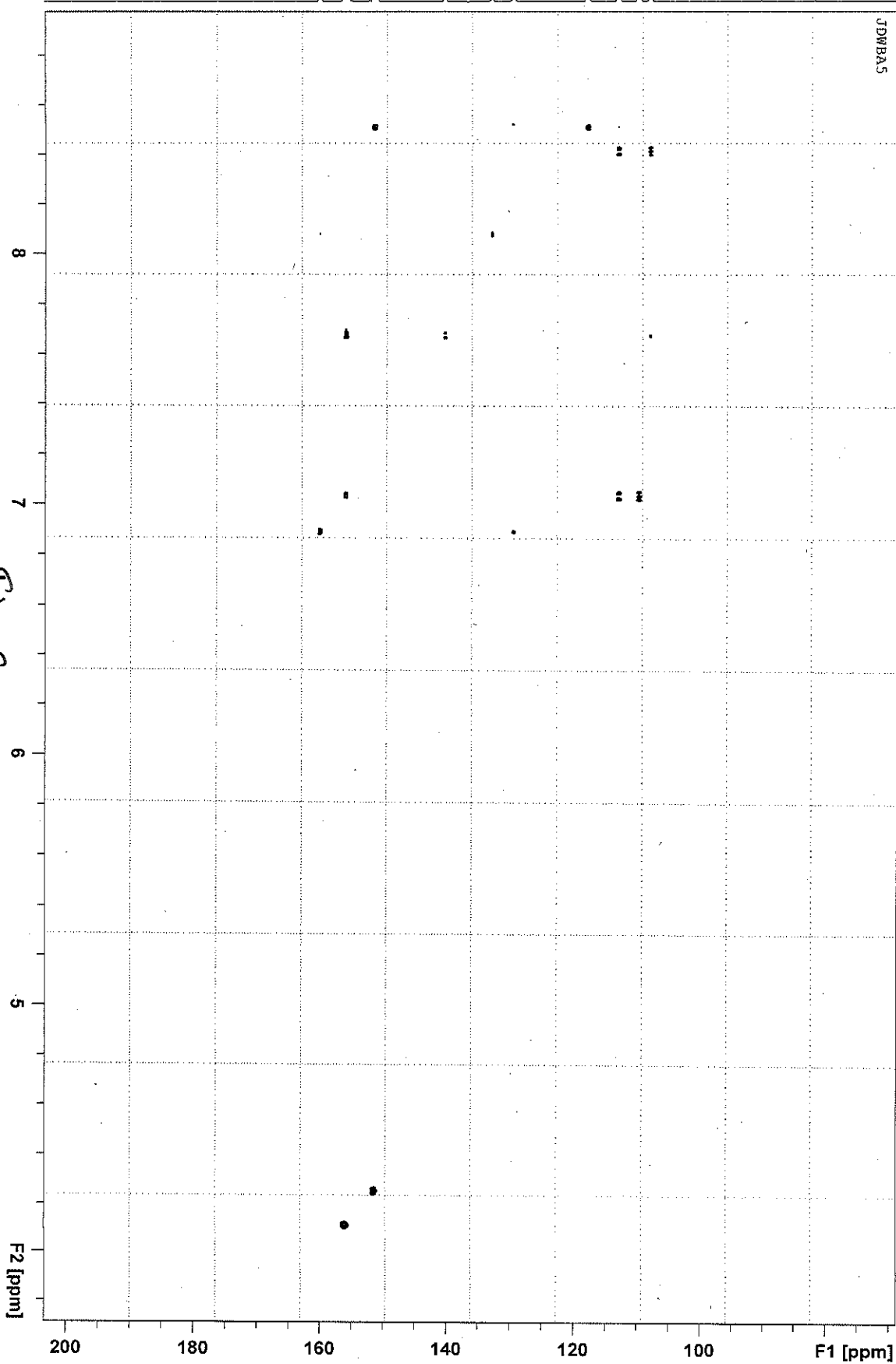


Fig S19

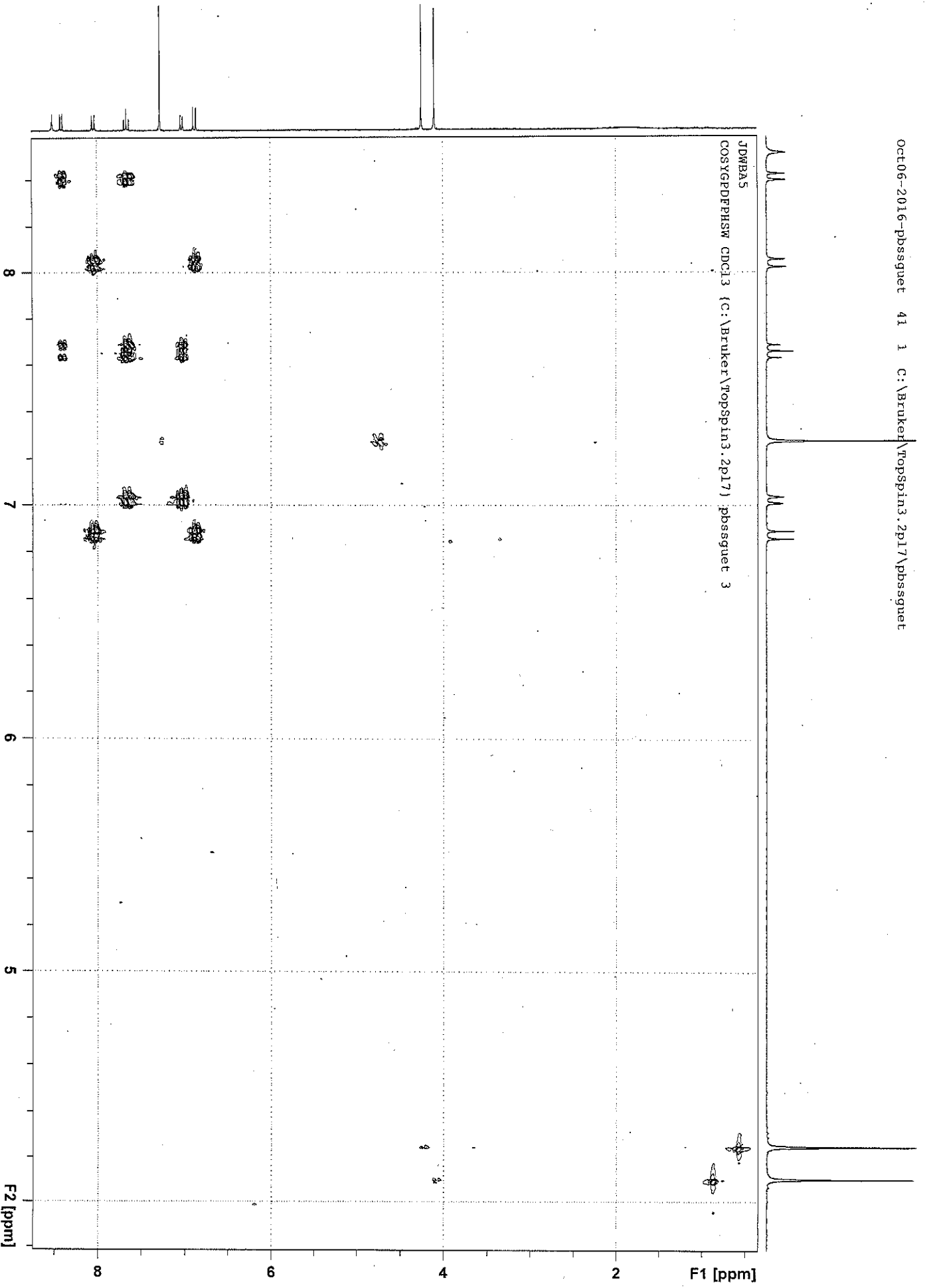


Fig S20