

Supplementary Data

γ -Propoxy-sulfo-lichenan induces *in vitro* cell differentiation of human keratinocytes

Stefan Esch¹, Maren Gottesmann¹ and Andreas Hensel^{1,*}

¹ University of Münster, Institute of Pharmaceutical Biology and Phytochemistry, Corrensstrasse 48, D-48149 Münster, Germany

* Correspondence: ahensel@uni-muenster.de; Tel.: +49-251-8333380; Fax: +49-251-8338341

Figure S1: Gel permeation chromatography elution profile of γ -propoxy-sulfo lichenan (γ -PSL) on Superose™6, eluted with NaCl 0.1 mol/L. Calibration has been performed with standard dextrans.

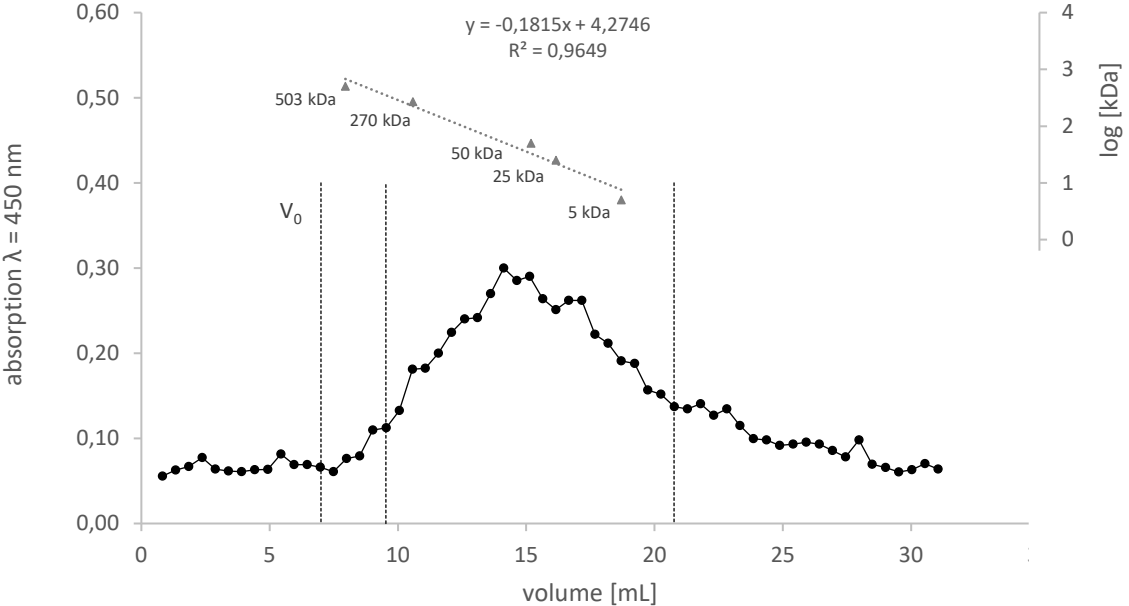


Figure S2: Influence of γ -PSL on the relative cell viability (48 h, MTT assay) (A) and on cell proliferation (24 h, BrdU incorporation ELISA) of NHEK (B). Data are related to the untreated control (UC). PC: FCS 5%. *: $p < 0.1$, **: $p < 0.05$: $p < 0.01$.

