

Supplementary Materials:

Communication

Bacterial Cellulose: A Versatile Chiral Host for Circularly Polarized Luminescence

Chen Zou, Dan Qu, Haijing Jiang, Di Lu, Xiaoting Ma, Ziyi Zhao and Yan Xu *

State key Laboratory of Inorganic Synthesis and Preparative Chemistry, Jilin University 2699 Qianjin Street, Changchun 130012, China; chris_zou@163.com (C.Z.); qudan0311@163.com (D.Q.); hjjiang2019@163.com (H.J.); mimituer@163.com (D.L.); MxtjLU@126.com (X.M.), z18844112609@163.com (Z.Z.)

* Correspondence: yanxu@jlu.edu.cn;

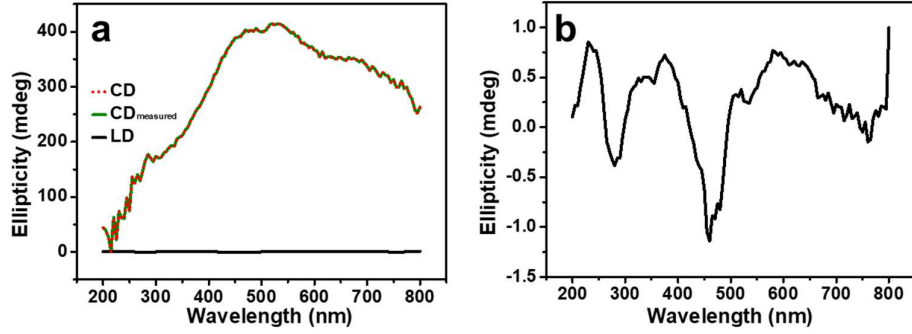


Figure S1. a) CD and LD spectra of BC. b) enlarged LD spectrum of BC.

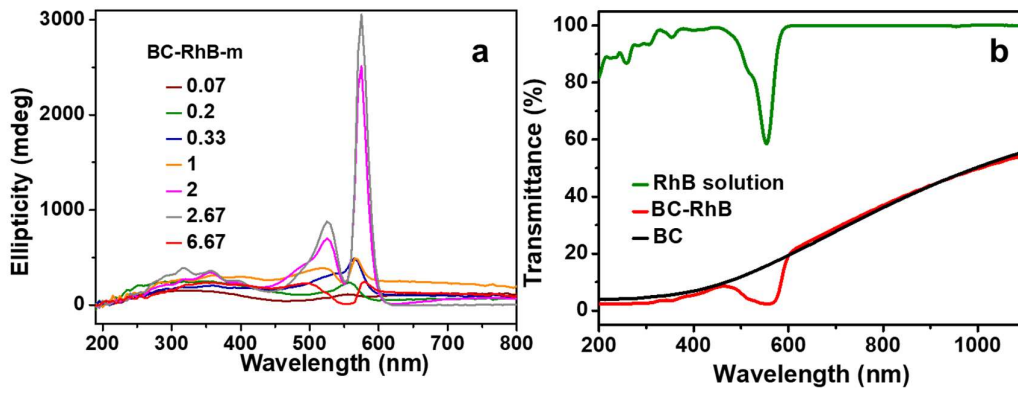


Figure S2. a) CD spectra of BC-RhB-m. b) UV-Vis transmission spectra of RhB solution, BC and BC-RhB.

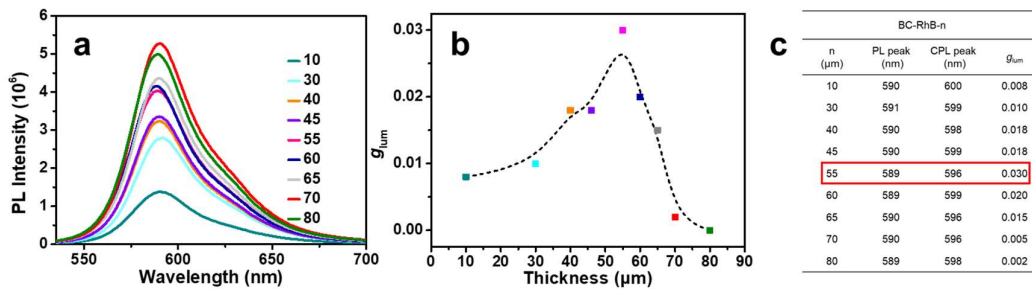


Figure S3. Characterization of BC-RhB-n. a) PL spectra. b, c) g_{lum} of BC-RhB-n.

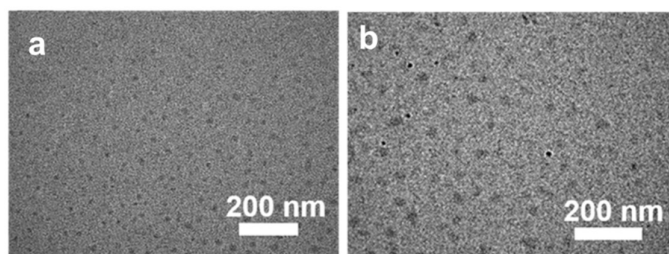


Figure S4. TEM images of a) PDotB and b) PDotR.

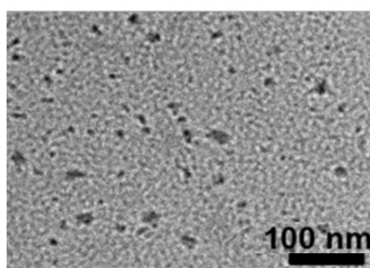


Figure S5. TEM images of CDot.

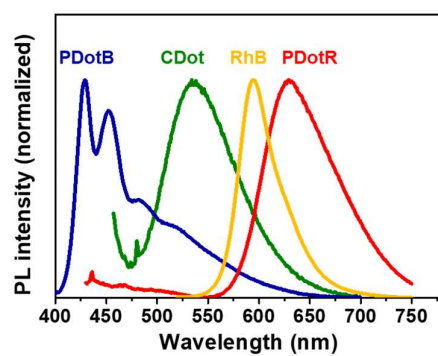


Figure S6. PL spectra of PDotB, CDot, RhB and PDotR solution.