

SUPPORTING INFORMATION

Crystallization of Polytetrafluoroethylene in a Wide Range of Cooling Rates: Nucleation and Diffusion in the Presence of Nanosilica Clusters

Nicolas Bosq ¹, Nathanaël Guigo ^{2,*}, Jacques Persello ³ and Nicolas Sbirrazzuoli ^{4,*}

¹ Université Côte d'Azur, Institut de Chimie de Nice, UMR CNRS 7272, 06100 Nice, France; nicolas.bosq@univ-cotedazur.fr

² Université Côte d'Azur, Institut de Chimie de Nice, UMR CNRS 7272, 06100 Nice, France;

³ Université Côte d'Azur, Institut de Physique de Nice, UMR CNRS 7010, 06100 Nice, France; jacques.persello@univ-cotedazur.fr

⁴ Université Côte d'Azur, Institut de Chimie de Nice, UMR CNRS 7272, 06100 Nice, France; nicolas.sbirrazzuoli@unice.fr

* Correspondence: nathanael.guigo@univ-cotedazur.fr (N.G.); nicolas.sbirrazzuoli@unice.fr (N.S.); Tel.: +33-04-9207-6179 (N.S.)

1. Transmission Electron Microscopy.....S1

2. Relative degree of crystallinity versus temperature.....S2

1. Transmission Electron Microscopy

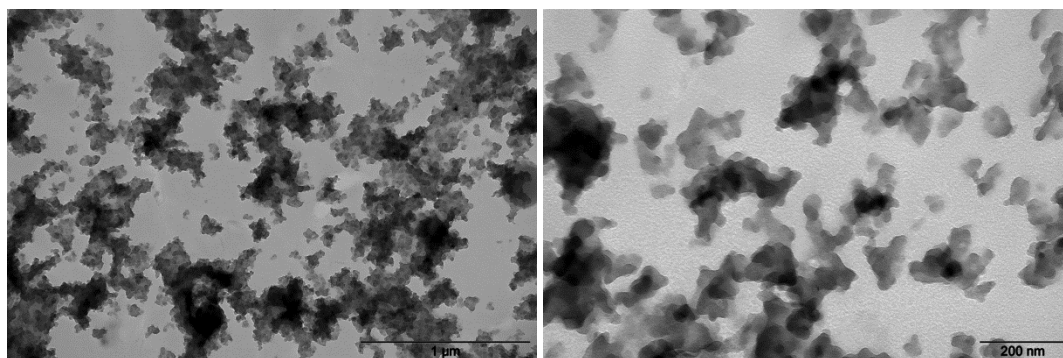
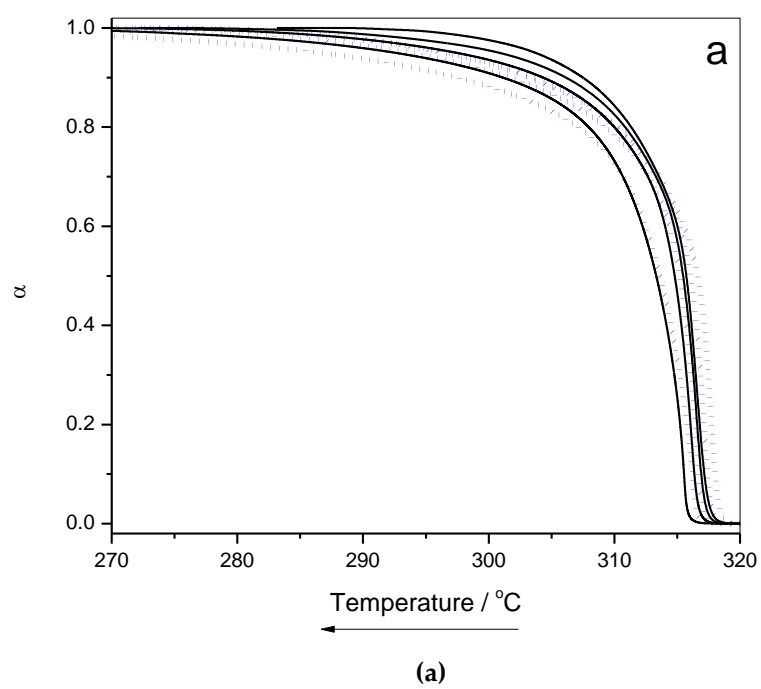


Figure 1. TEM pictures of SiO₂(c) nanoparticles.

2. Relative Degree of Crystallinity Versus Temperature



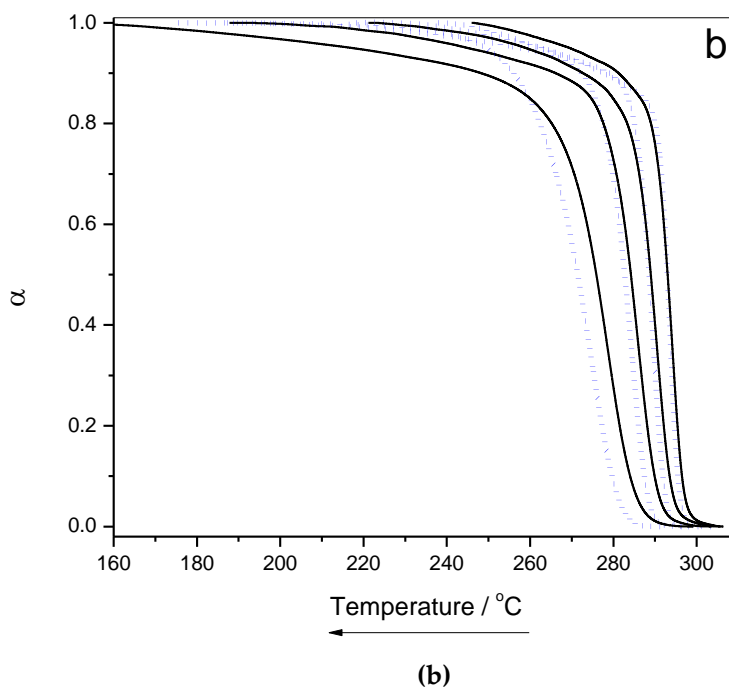


Figure 2. Relative degree of crystallinity vs temperature during the nonisothermal crystallization from the melt of neat PTFE (black, line) and PTFE/ SiO₂(c)F (blue, dot) obtained by DSC (a) and FSC (b). The cooling rate of each experiment (in K·s⁻¹) is indicated by each curve. Inset: magnification of the α vs T curve at the beginning of crystallization process.