

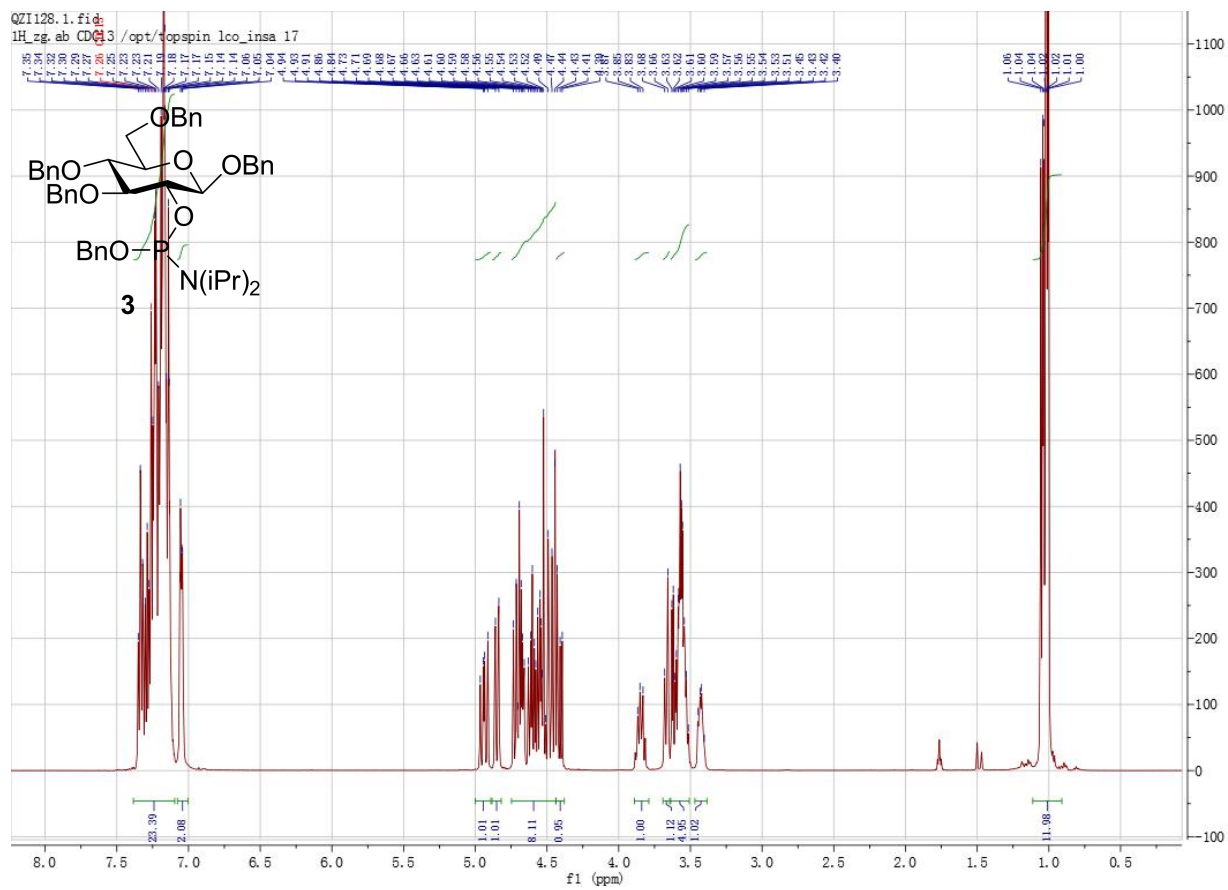
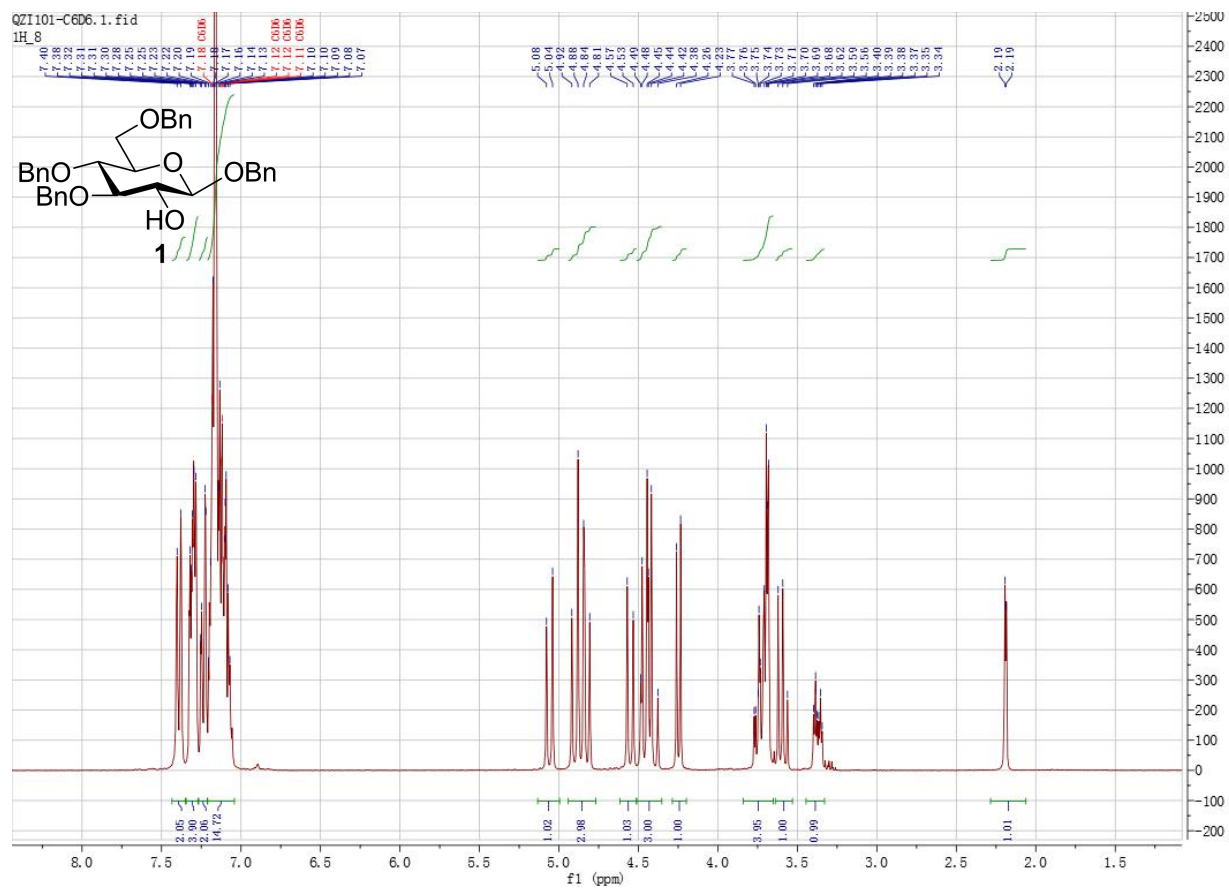
Esters of glucose-2-phosphate: occurrence and chemistry

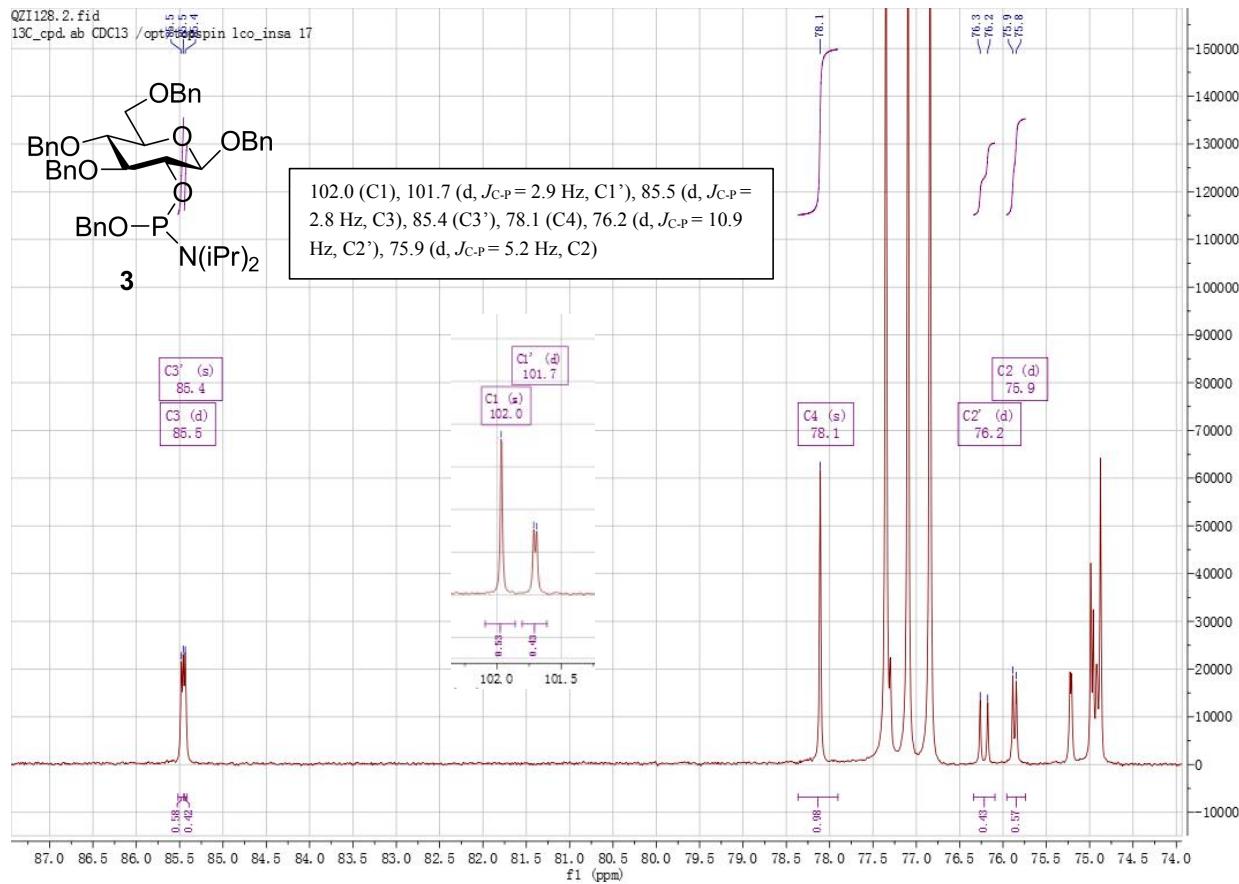
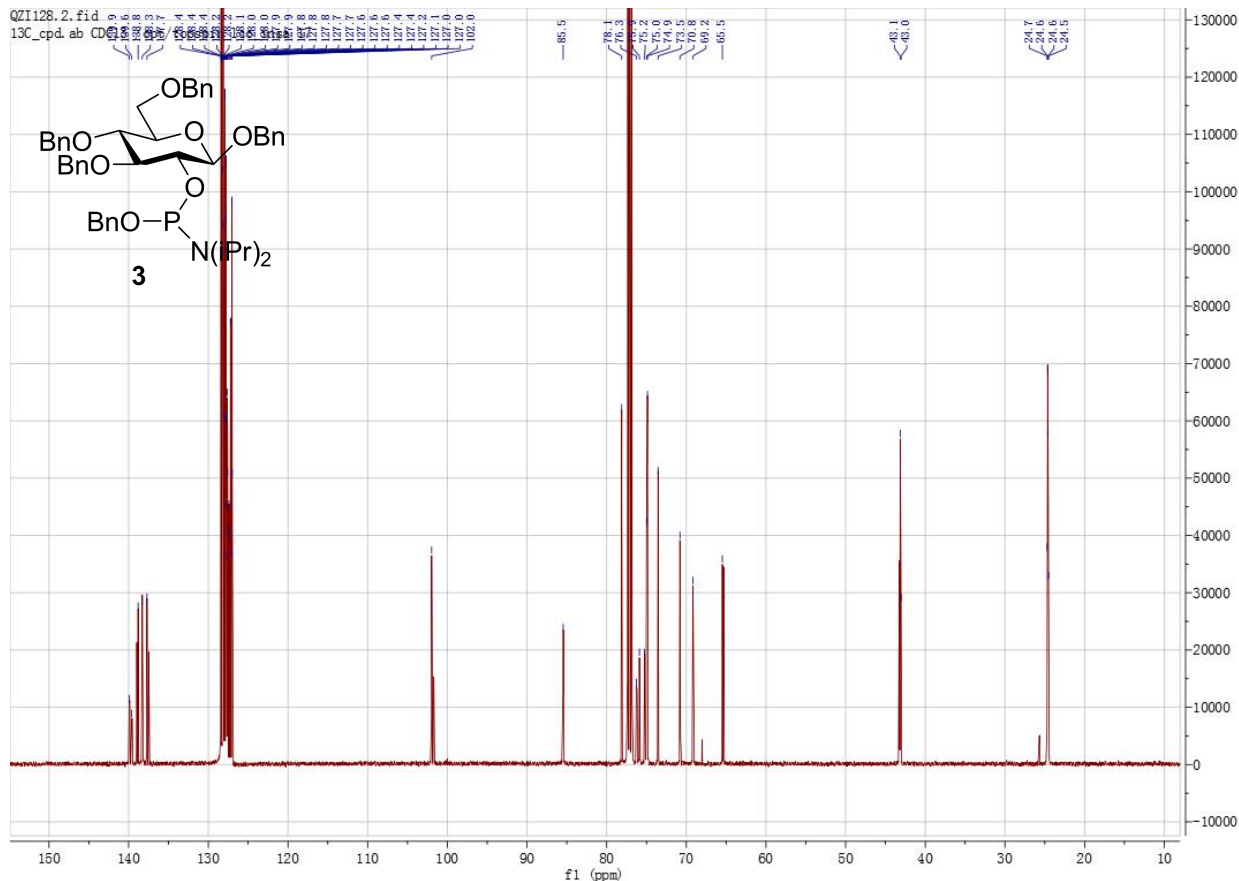
Qiang Zhang, Si-zhe Li, Mohammed Ahmar, Laurent Soullère, Yves Queneau*

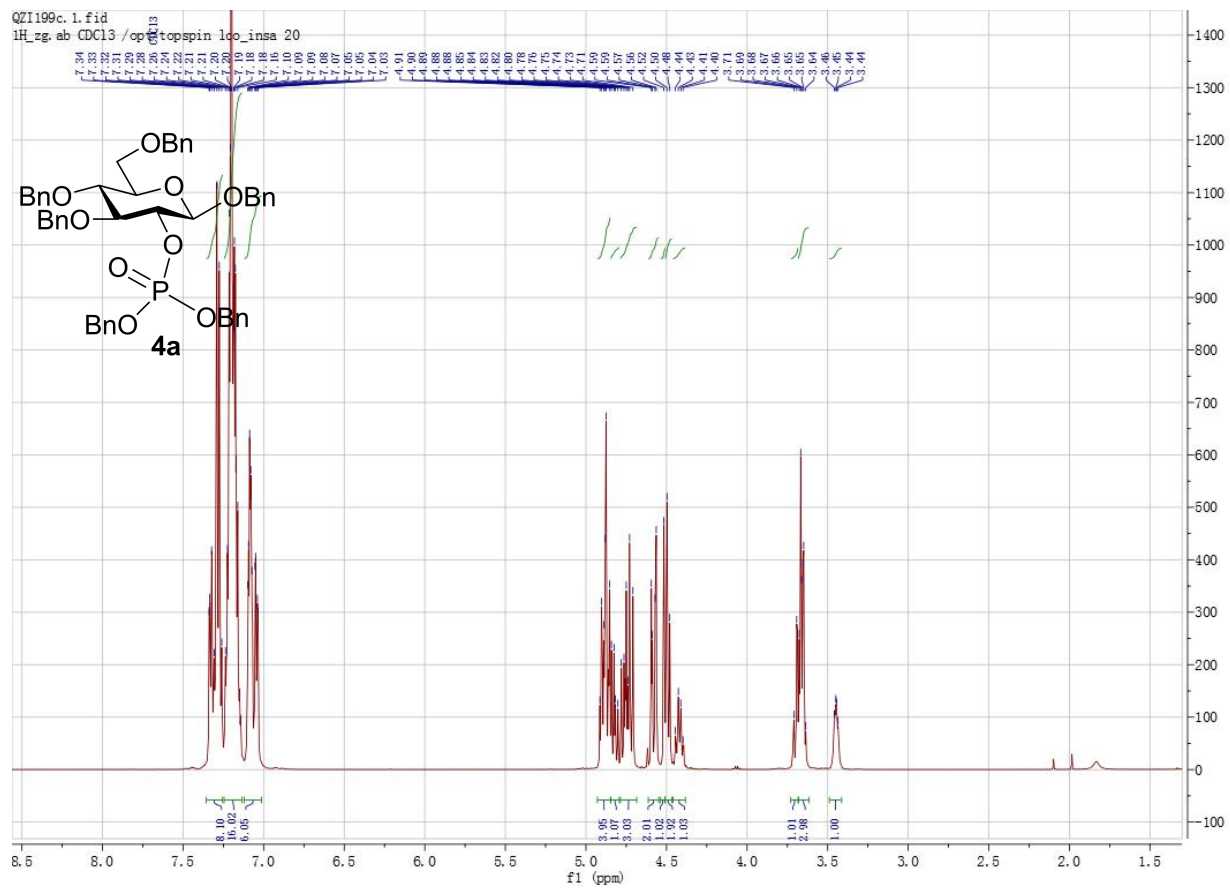
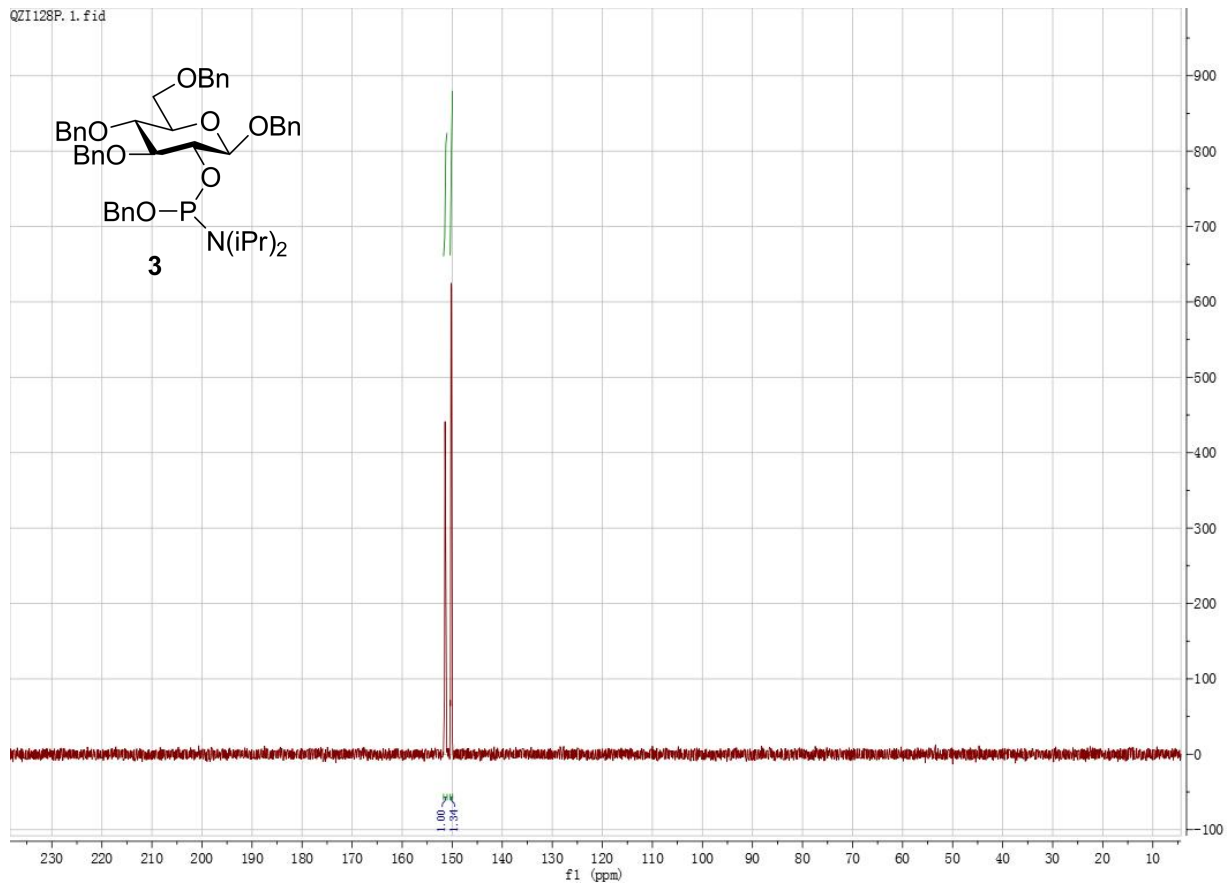
Univ Lyon, Université Claude Bernard Lyon 1, INSA Lyon, CPE Lyon, UMR 5246, CNRS, ICBMS, Institut de Chimie et de Biochimie Moléculaires et Supramoléculaires, Chimie Organique et Bioorganique, Bât. E. Lederer, 1 rue Victor Grignard F-69622 Villeurbanne, France.

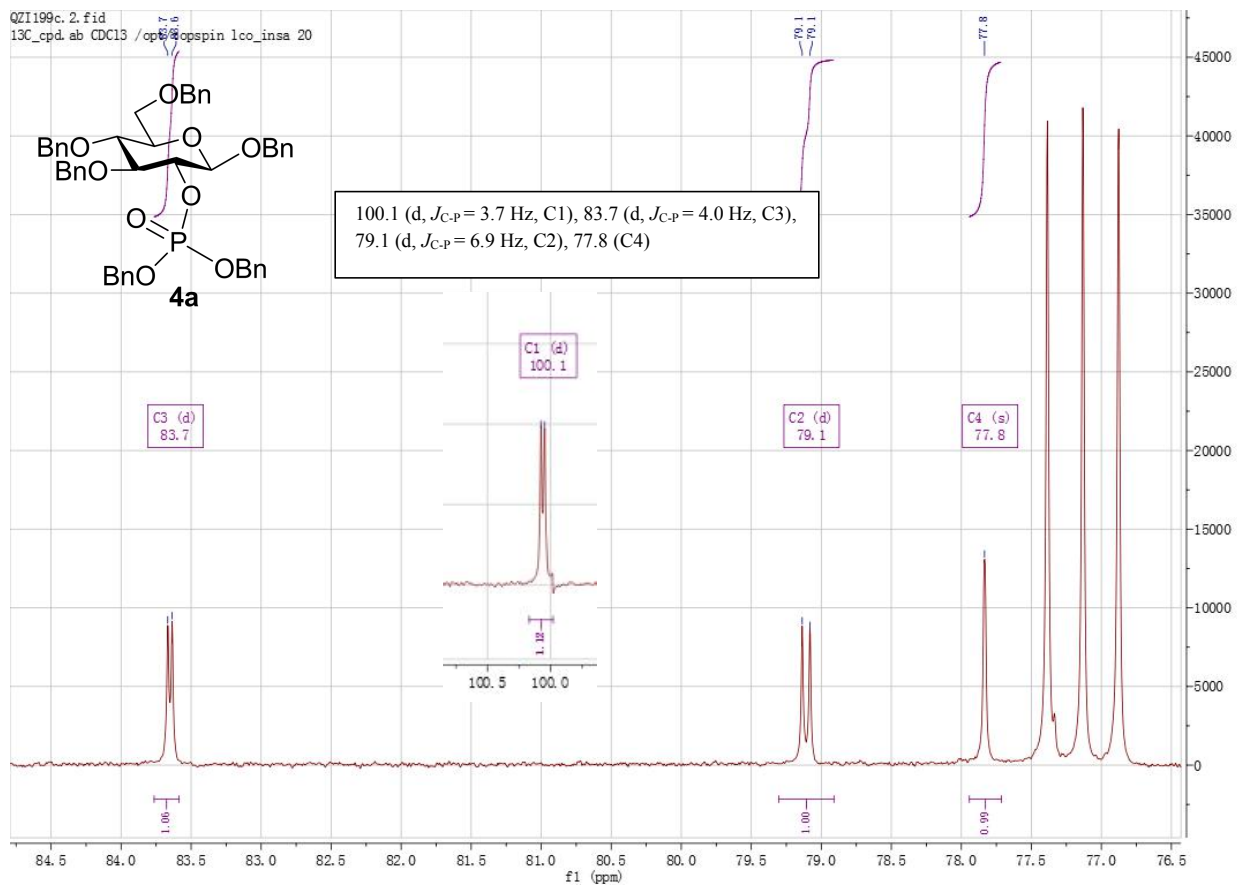
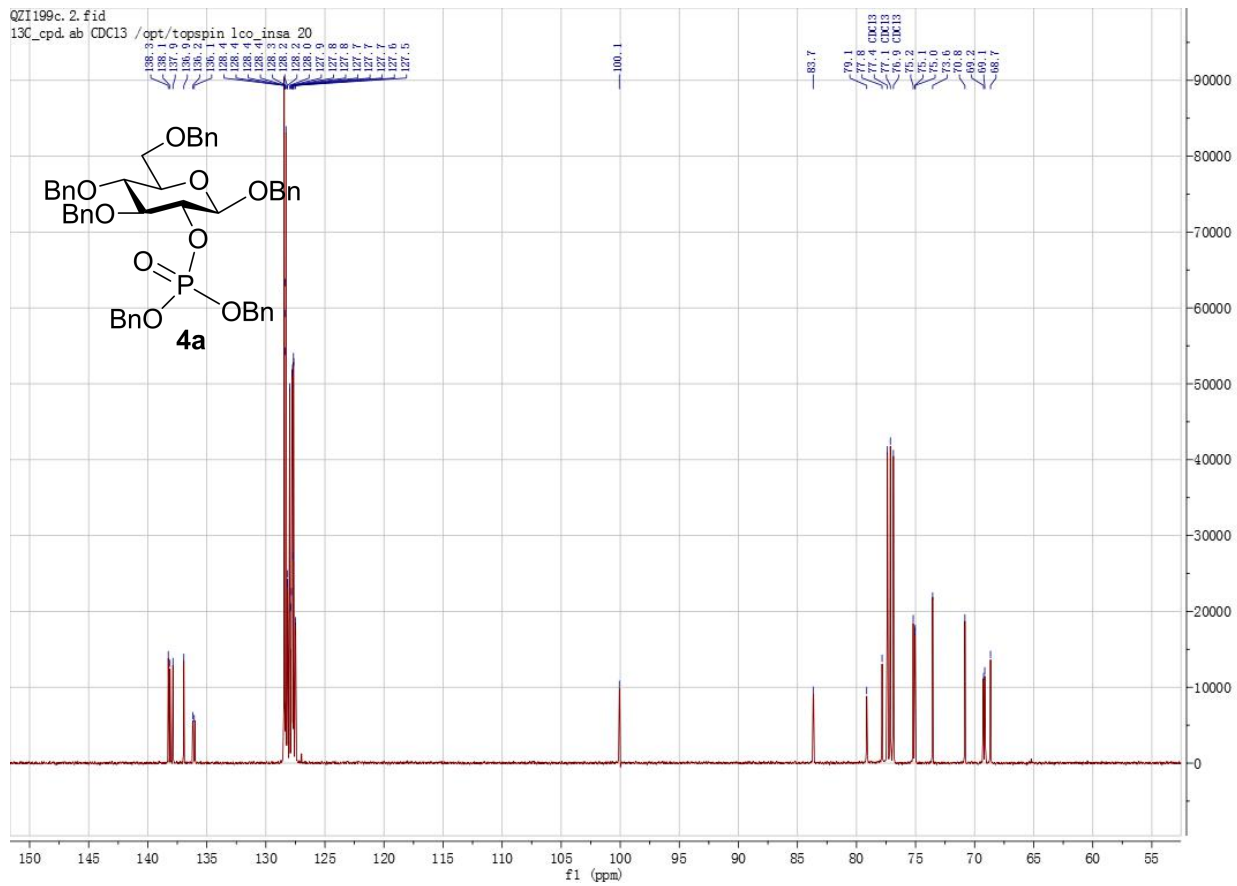
Supplementary data – ^1H NMR, ^{13}C NMR and ^{31}P NMR spectra

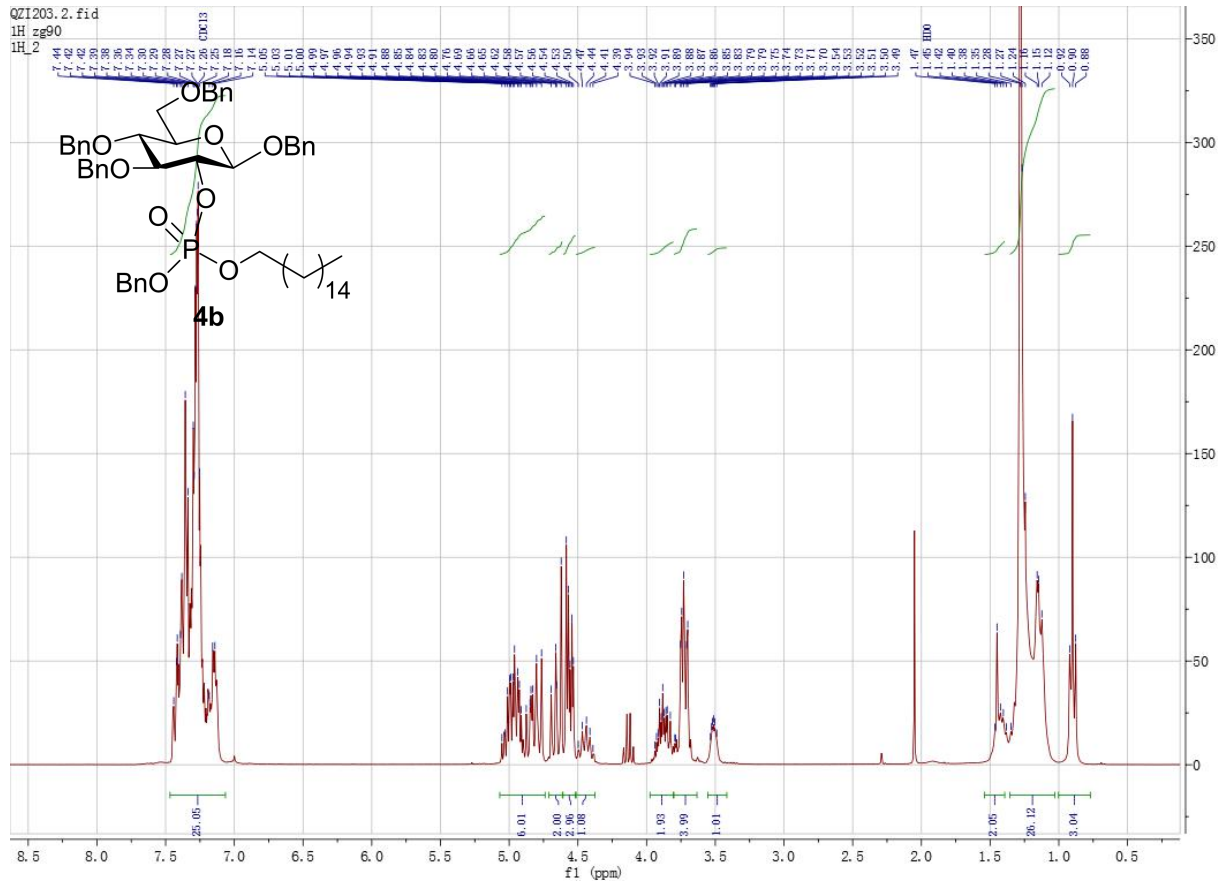
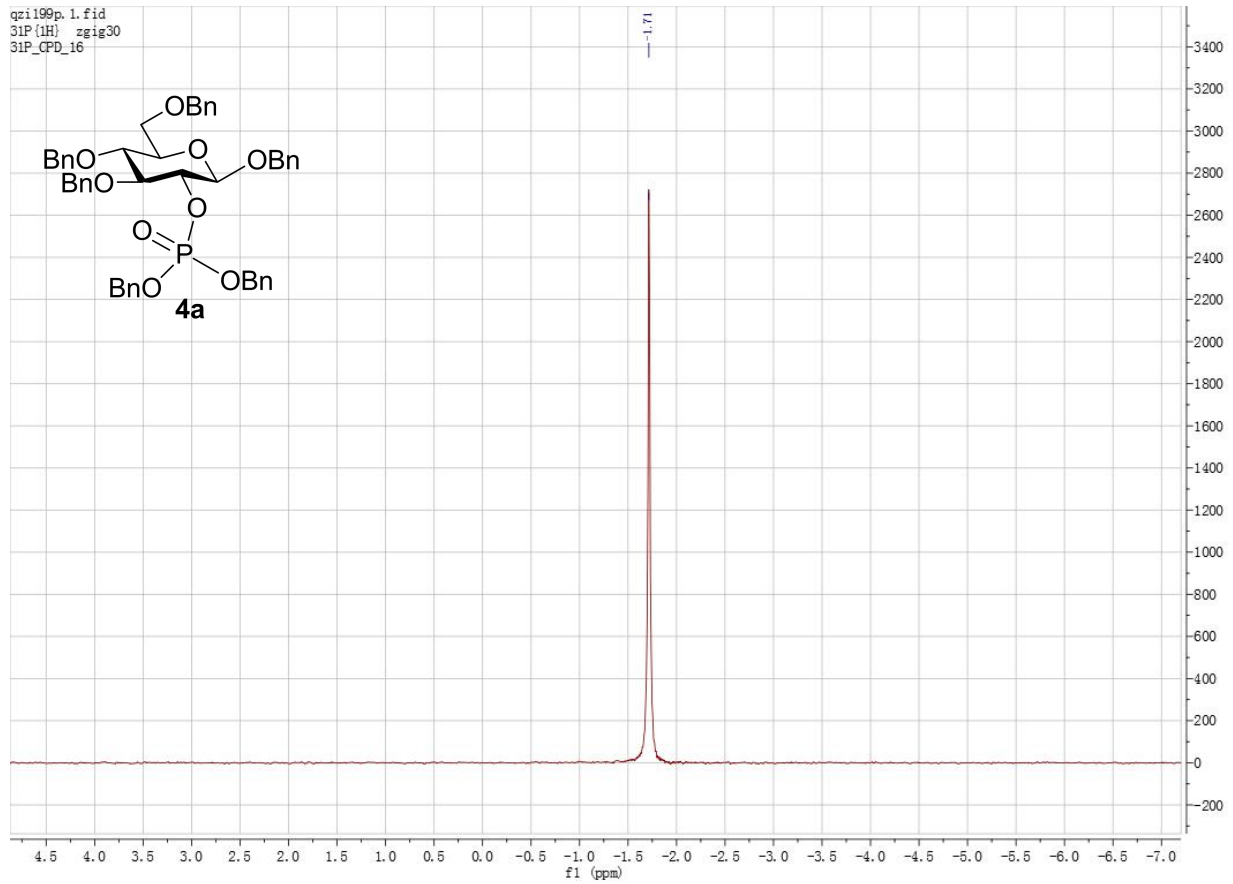
* Corresponding authors at: ICBMS, Chimie Organique et Bioorganique, Bât. E. Lederer, 1 rue Victor Grignard F-69622 Villeurbanne, France.
E-mail addresses: yves.queneau@insa-lyon.fr

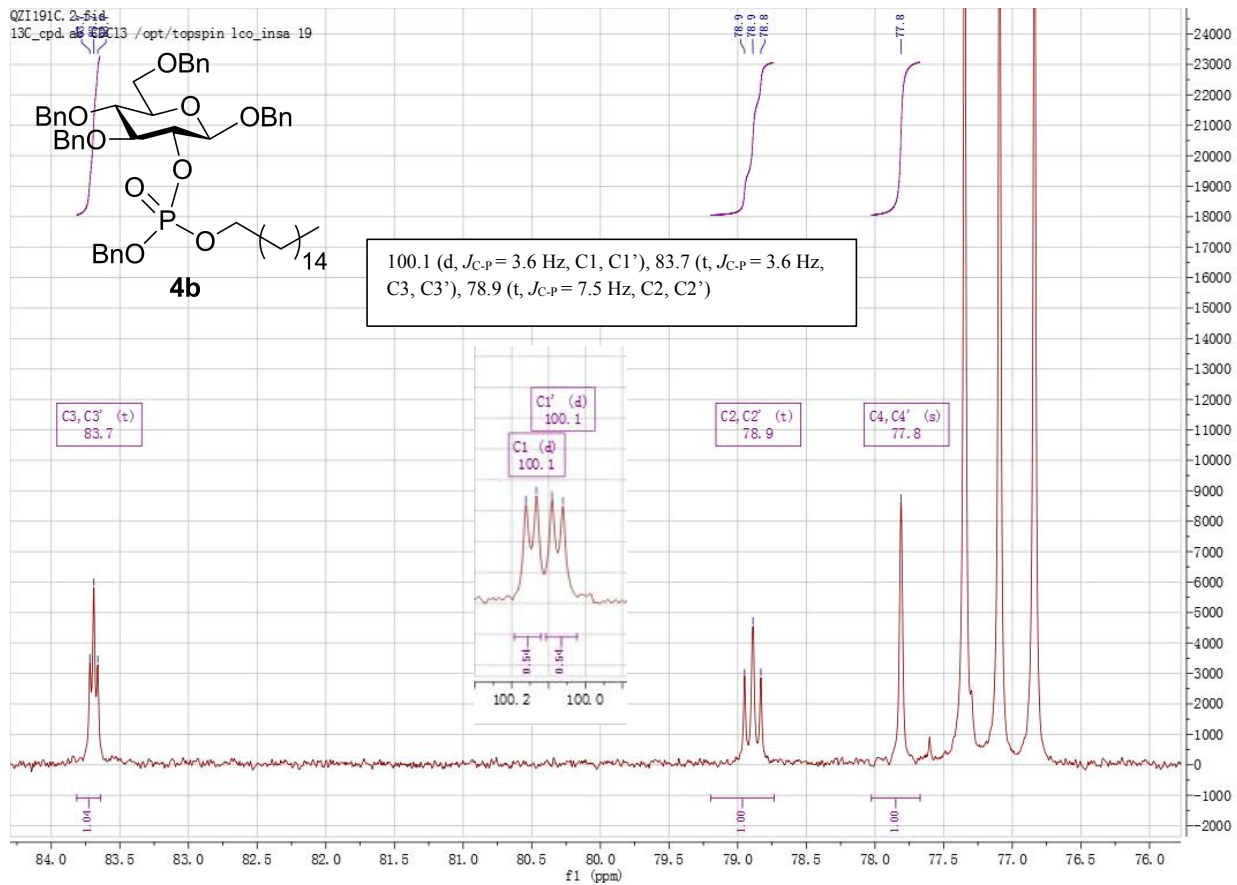
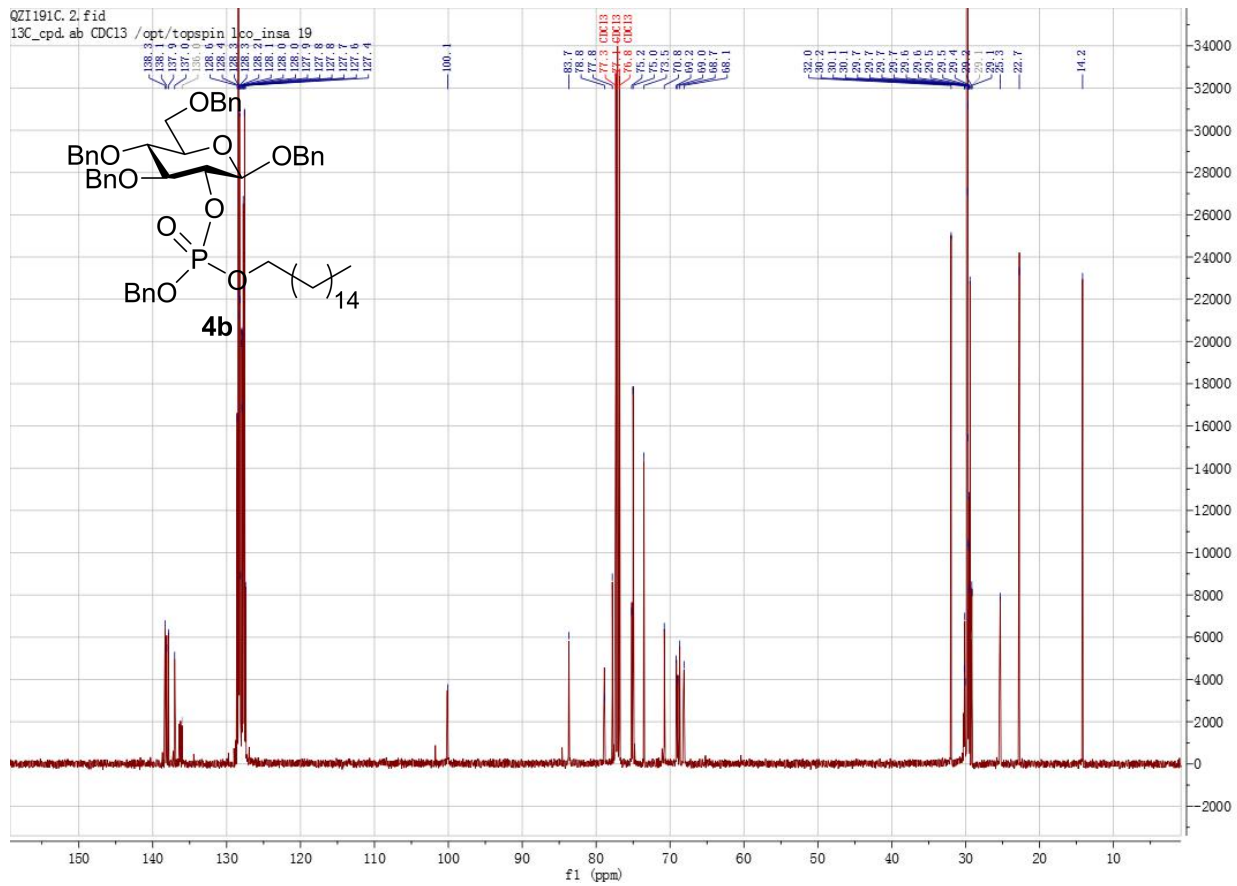


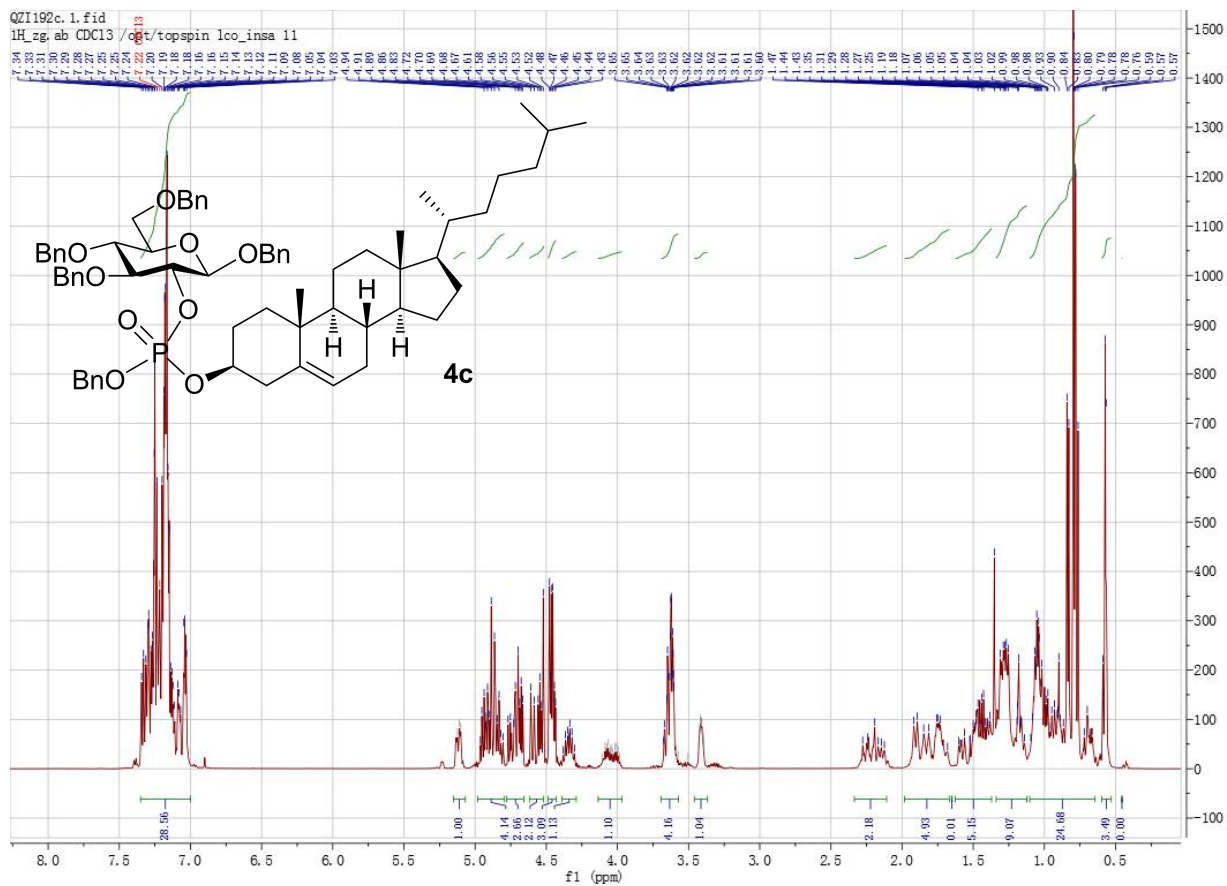
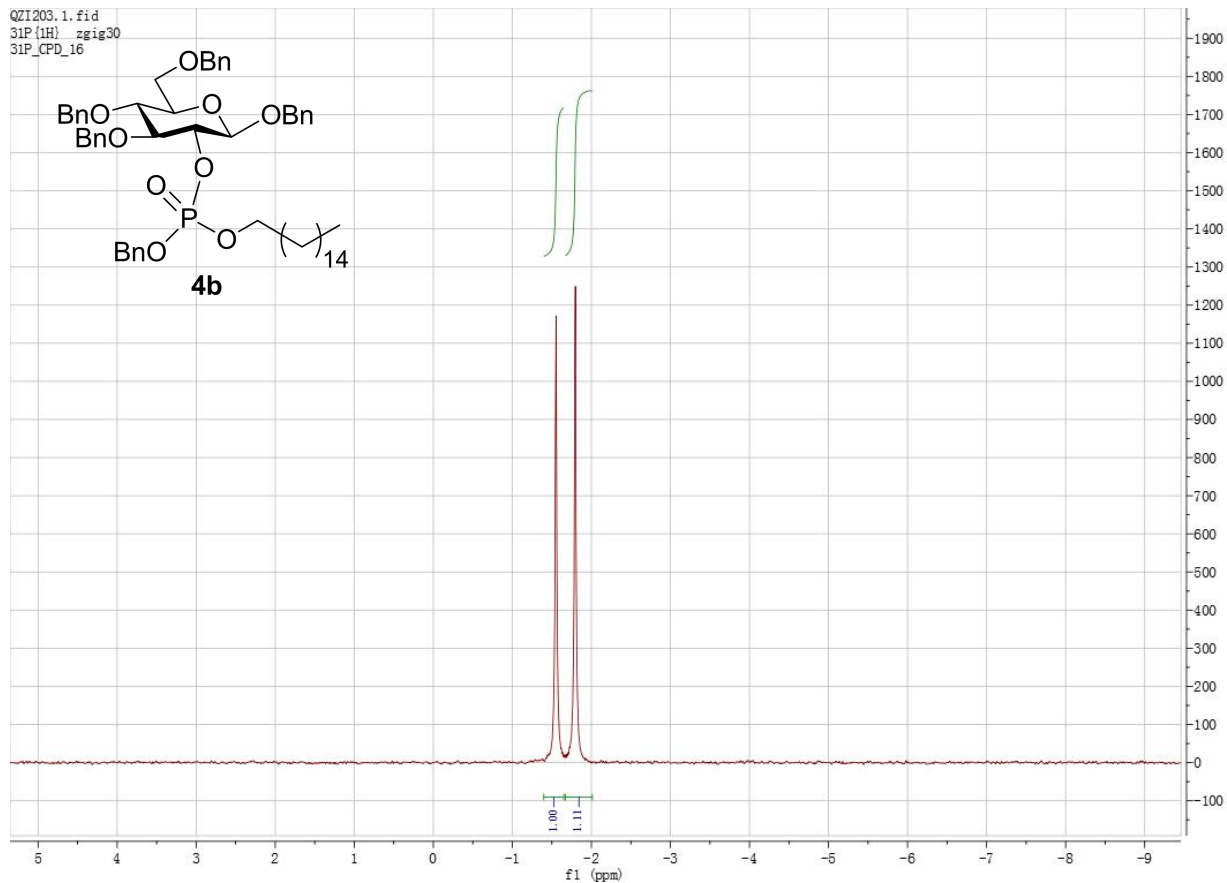


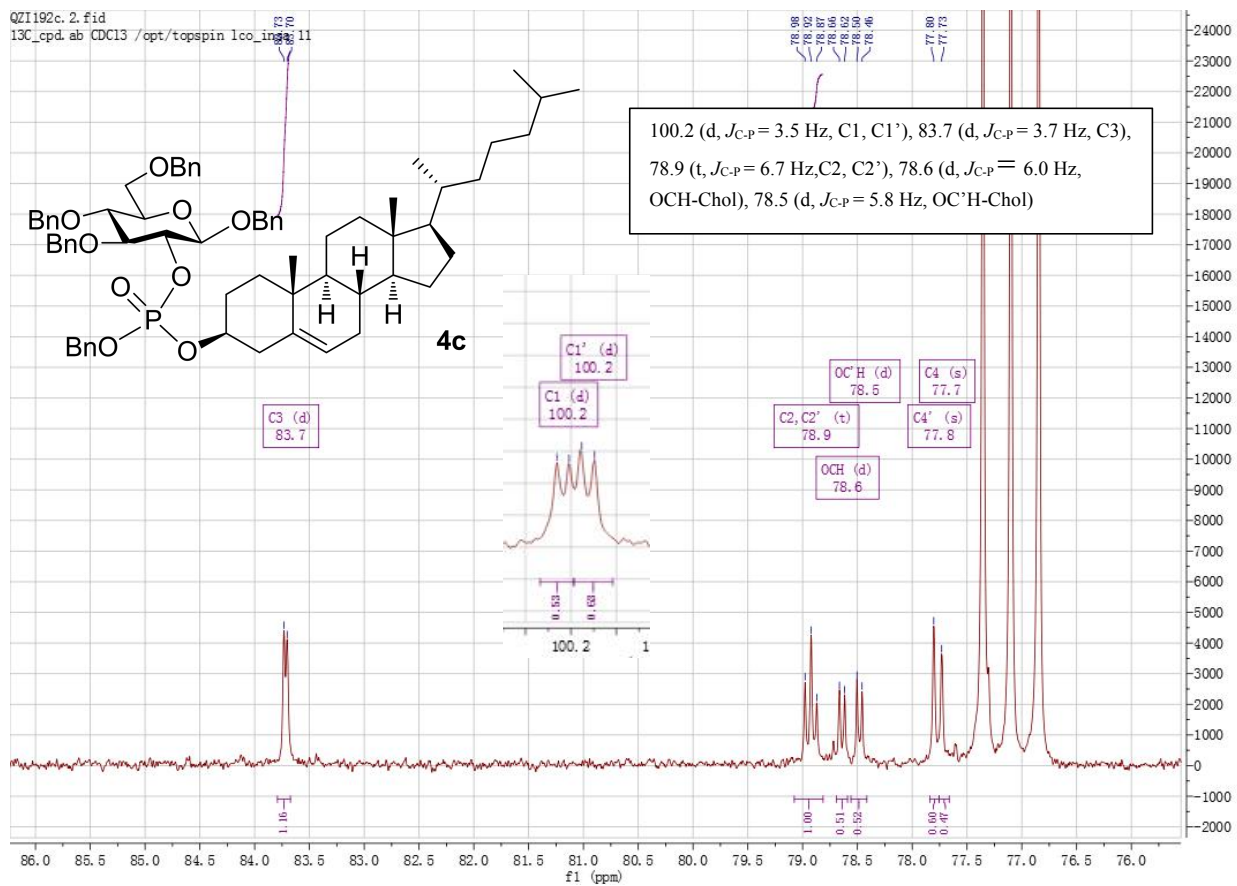
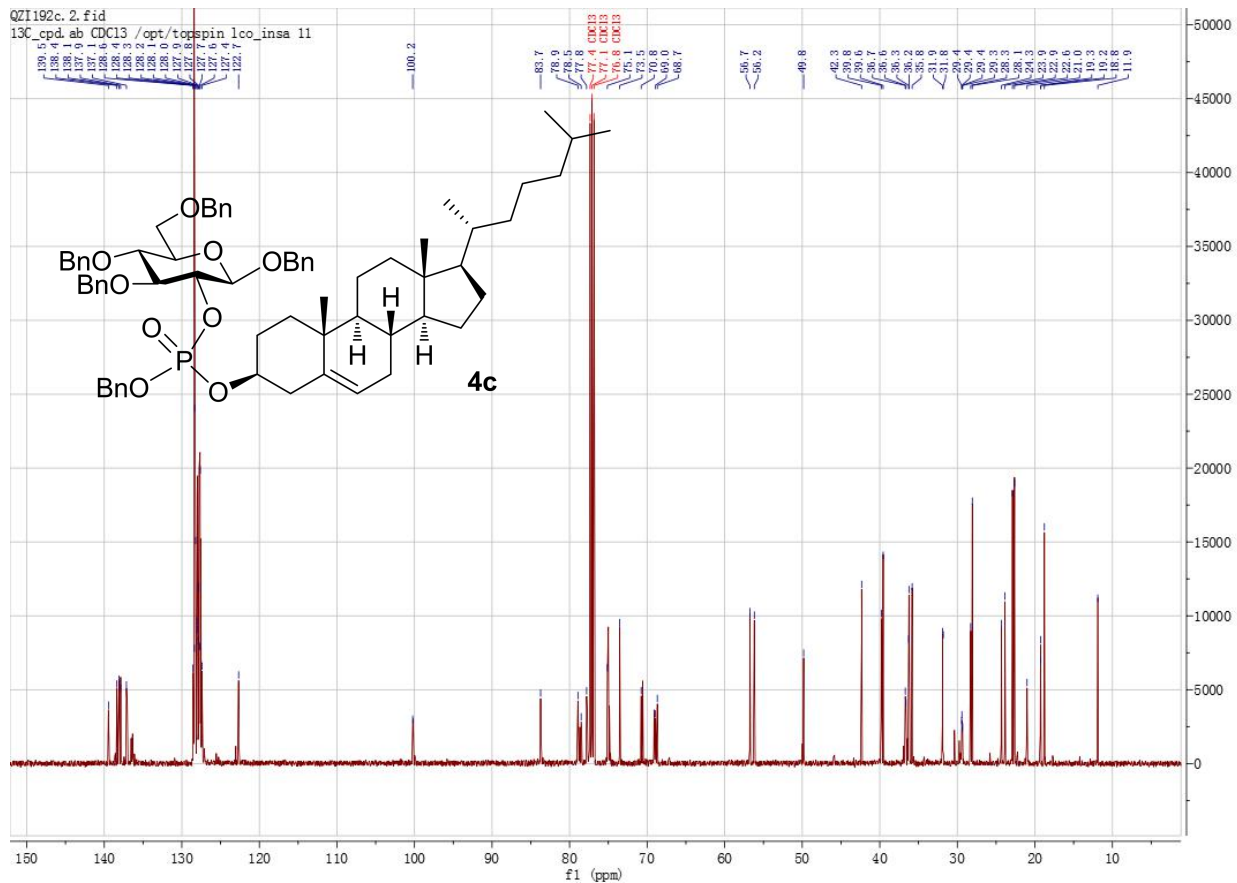




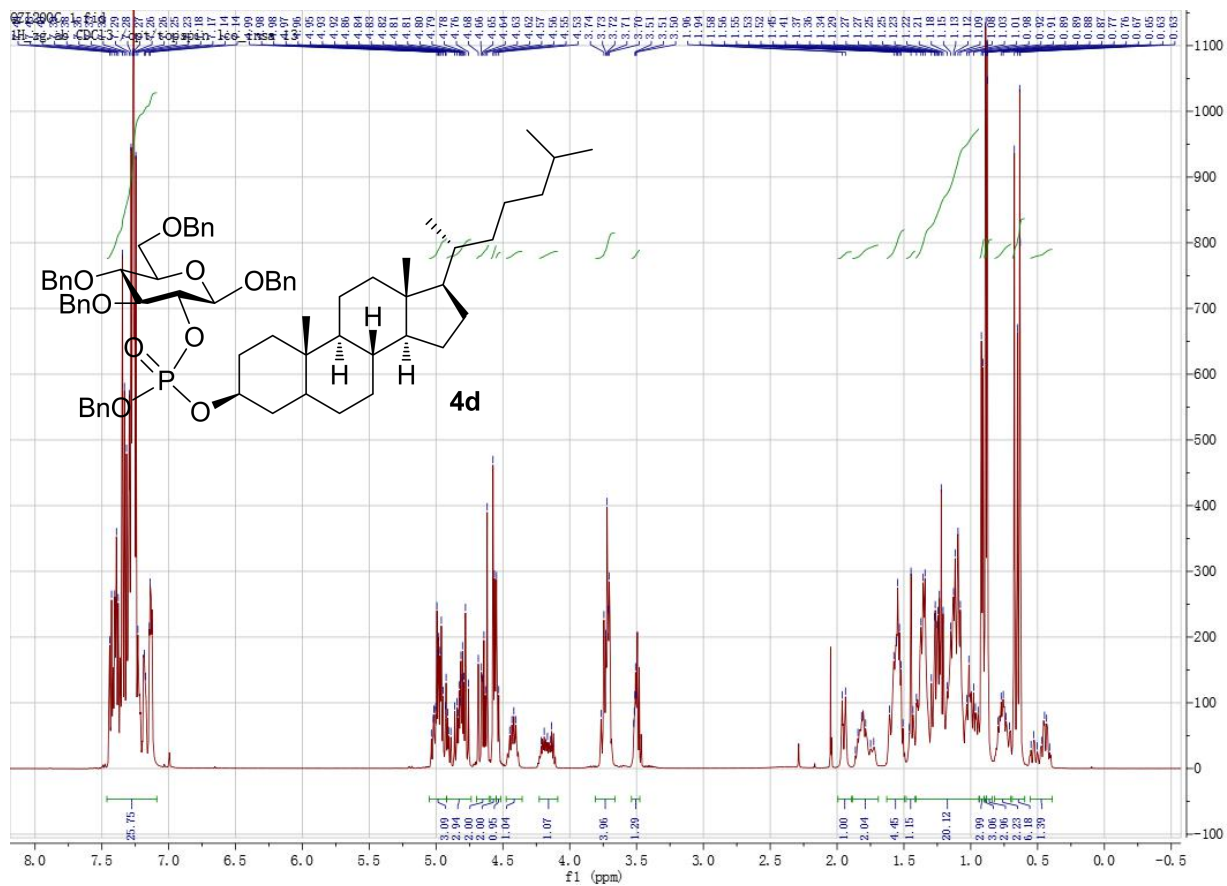
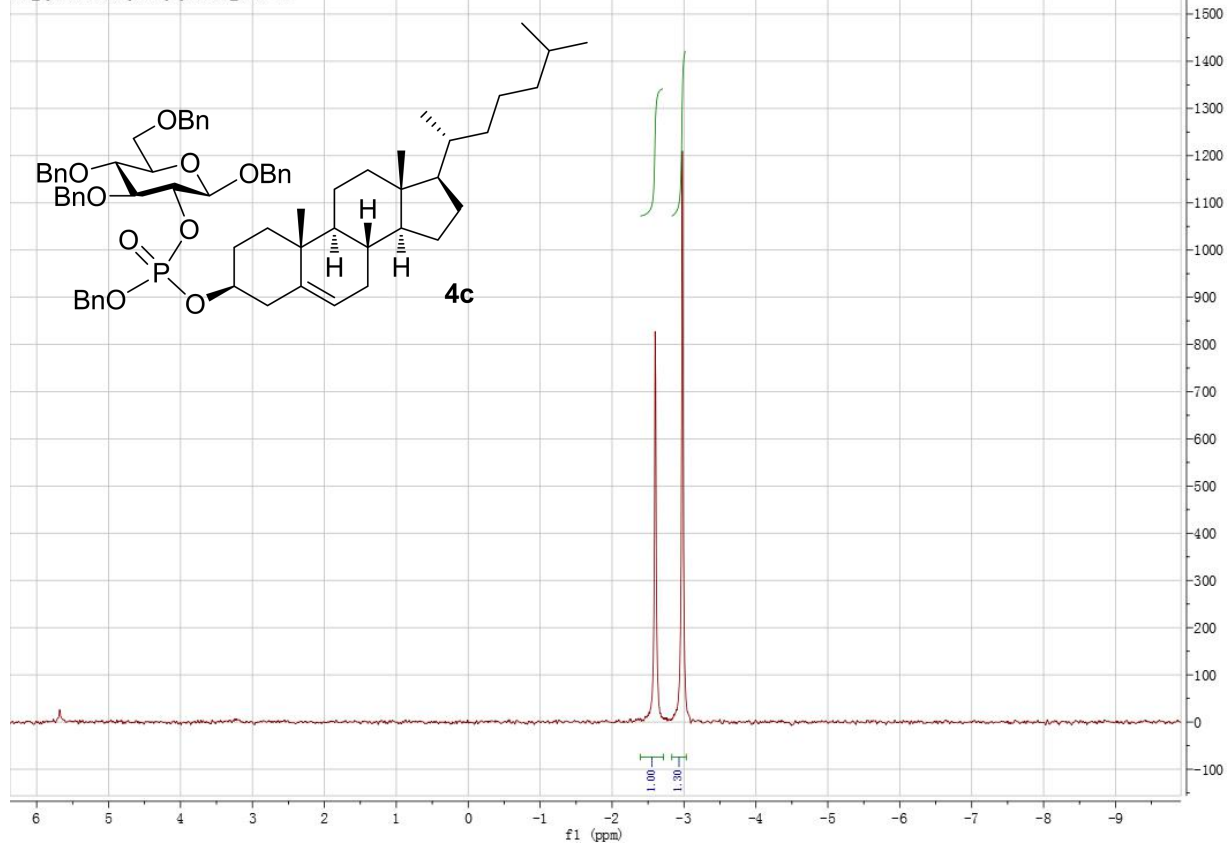


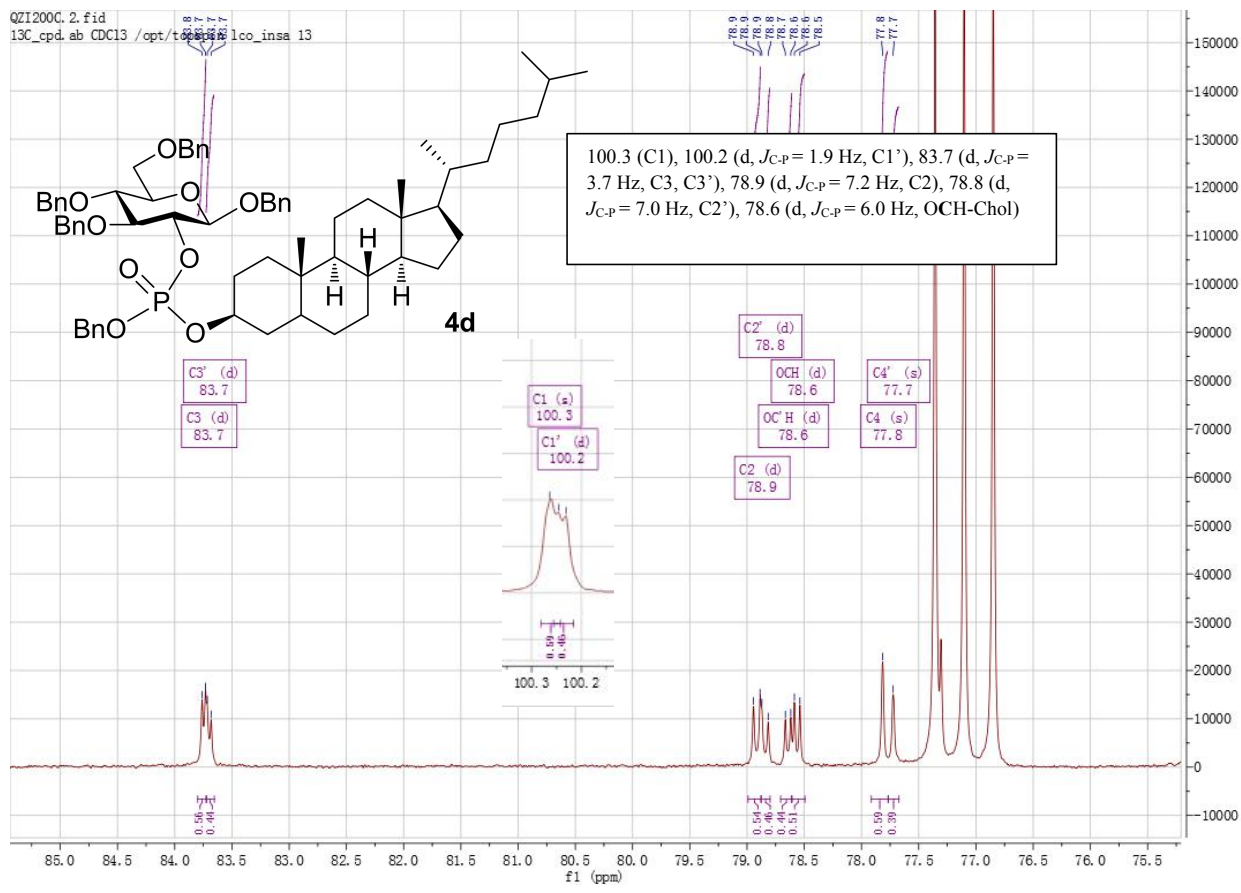
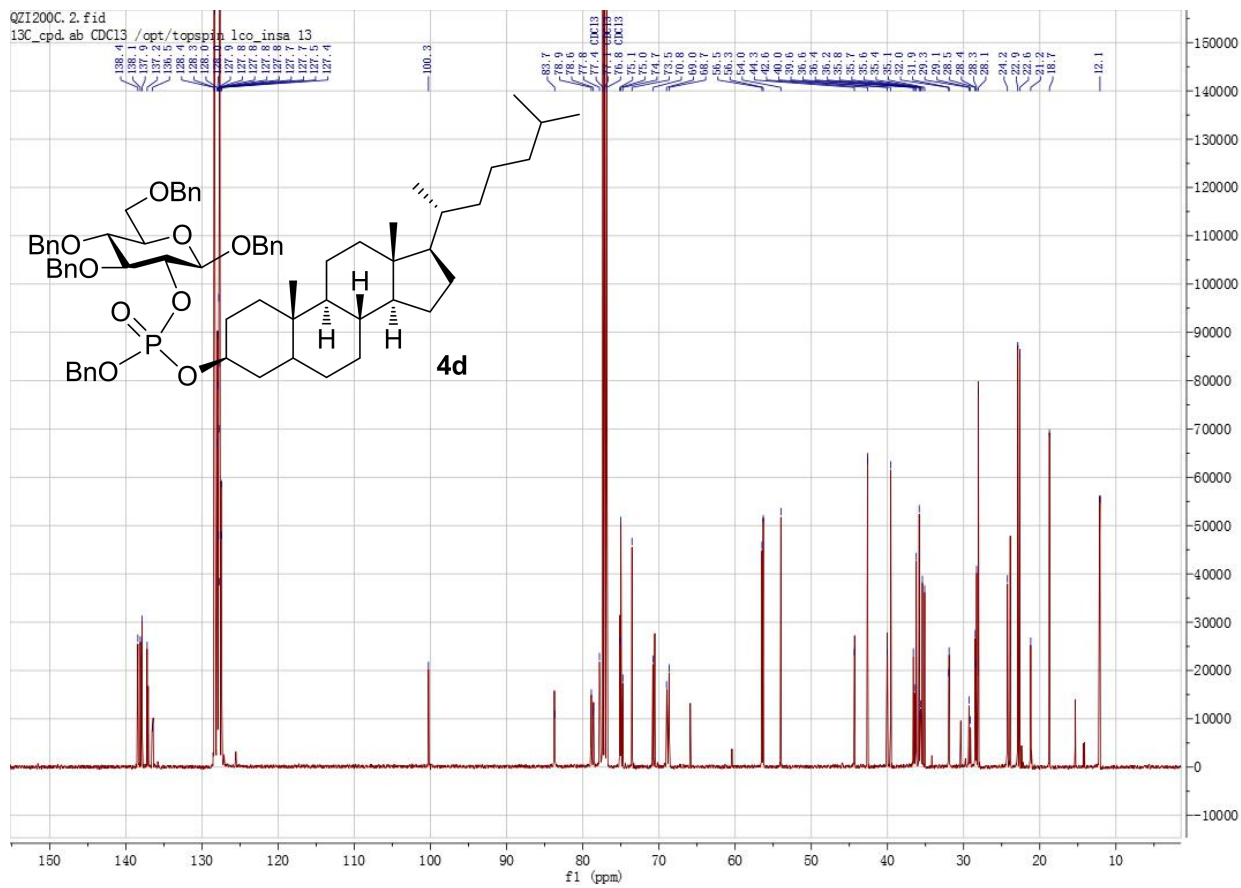


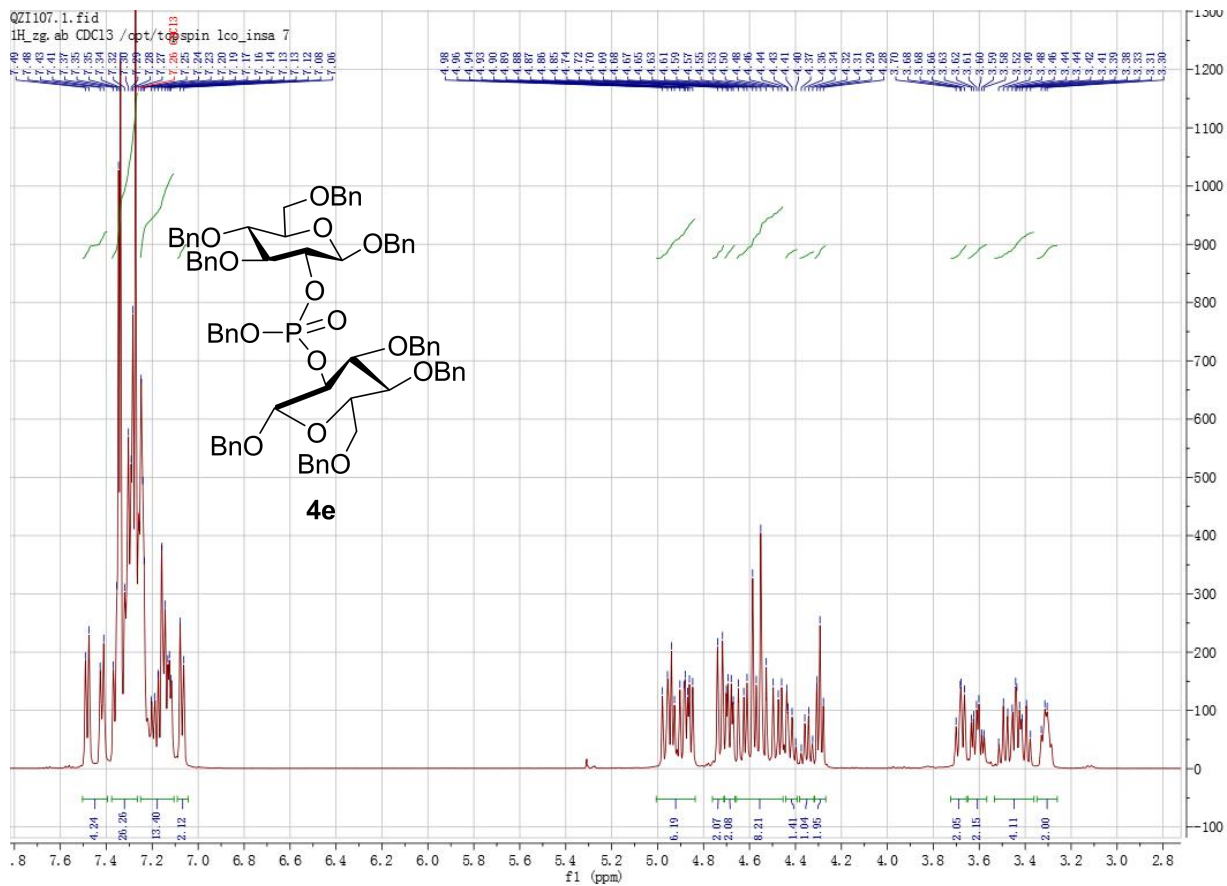
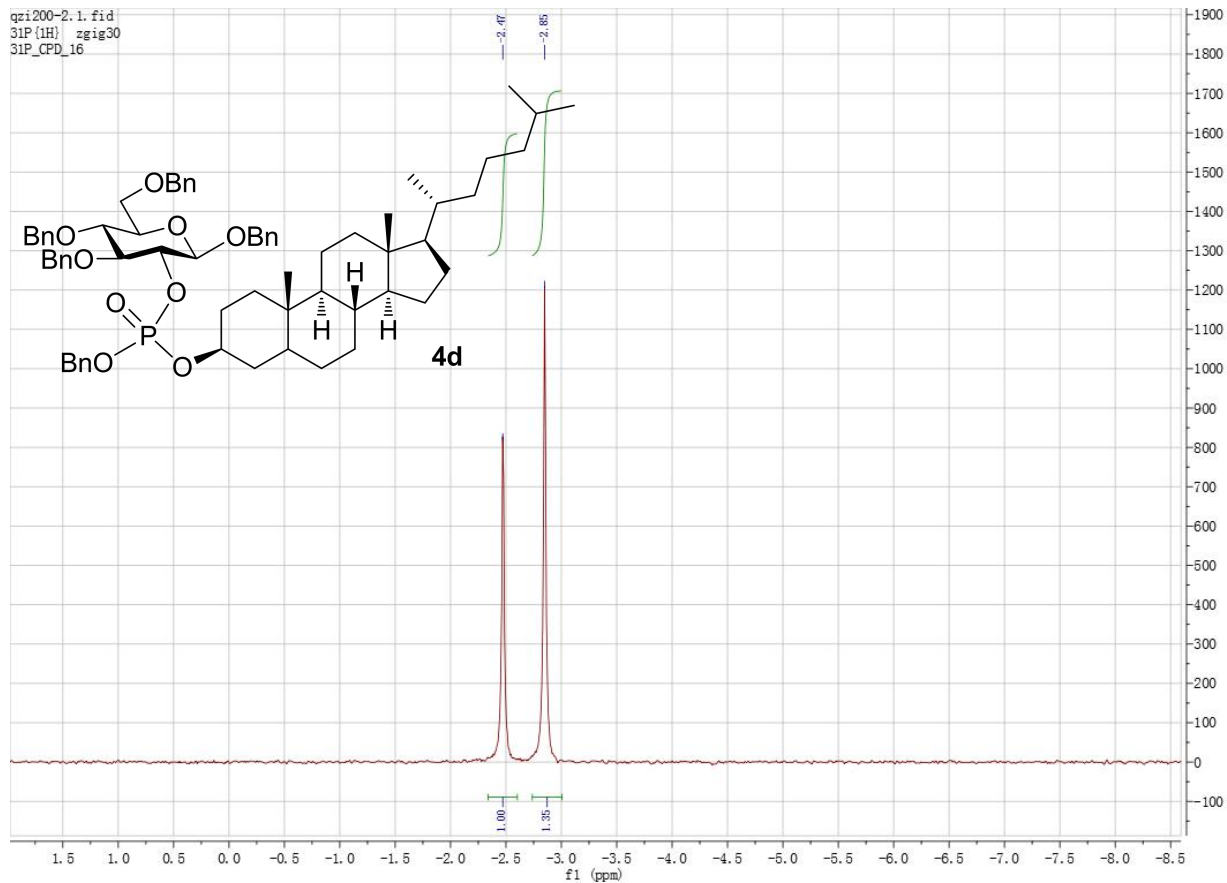


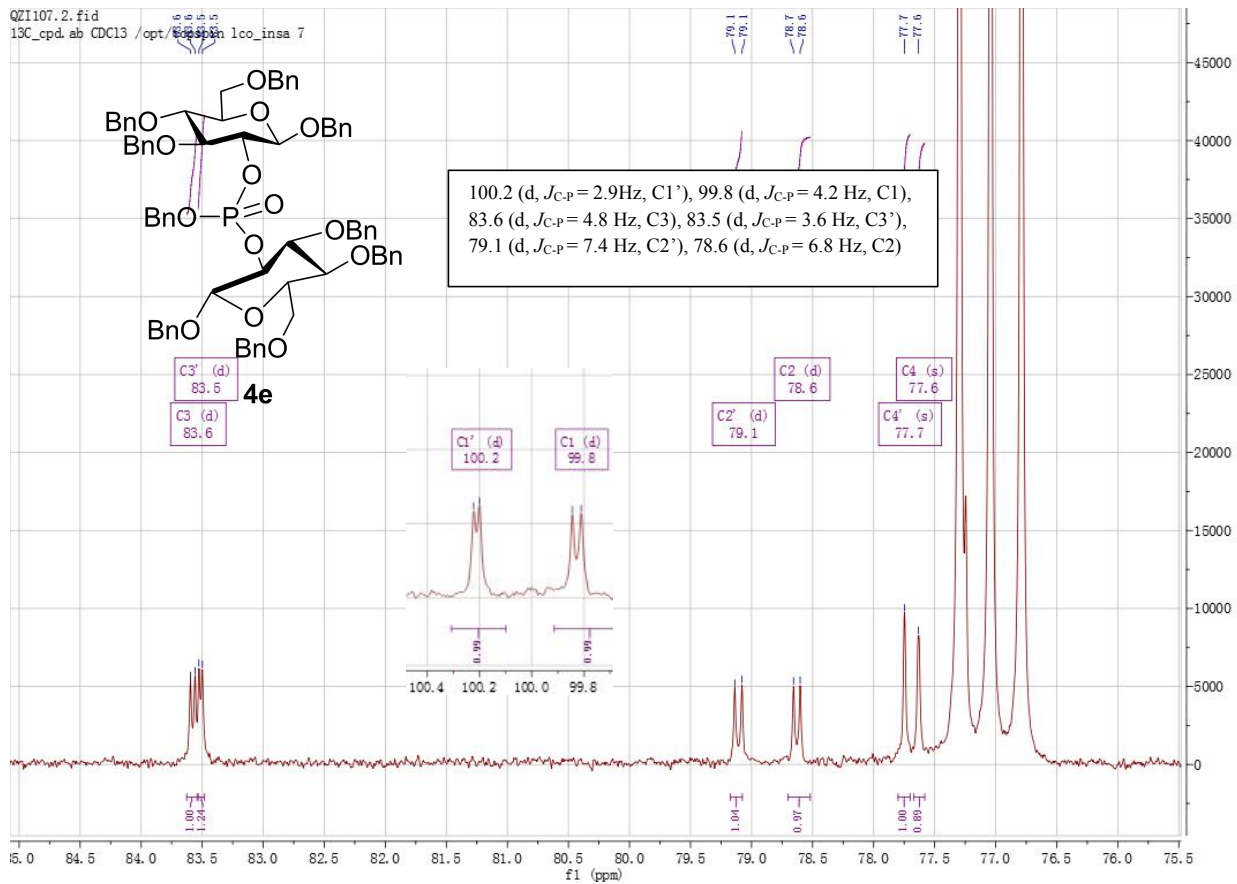
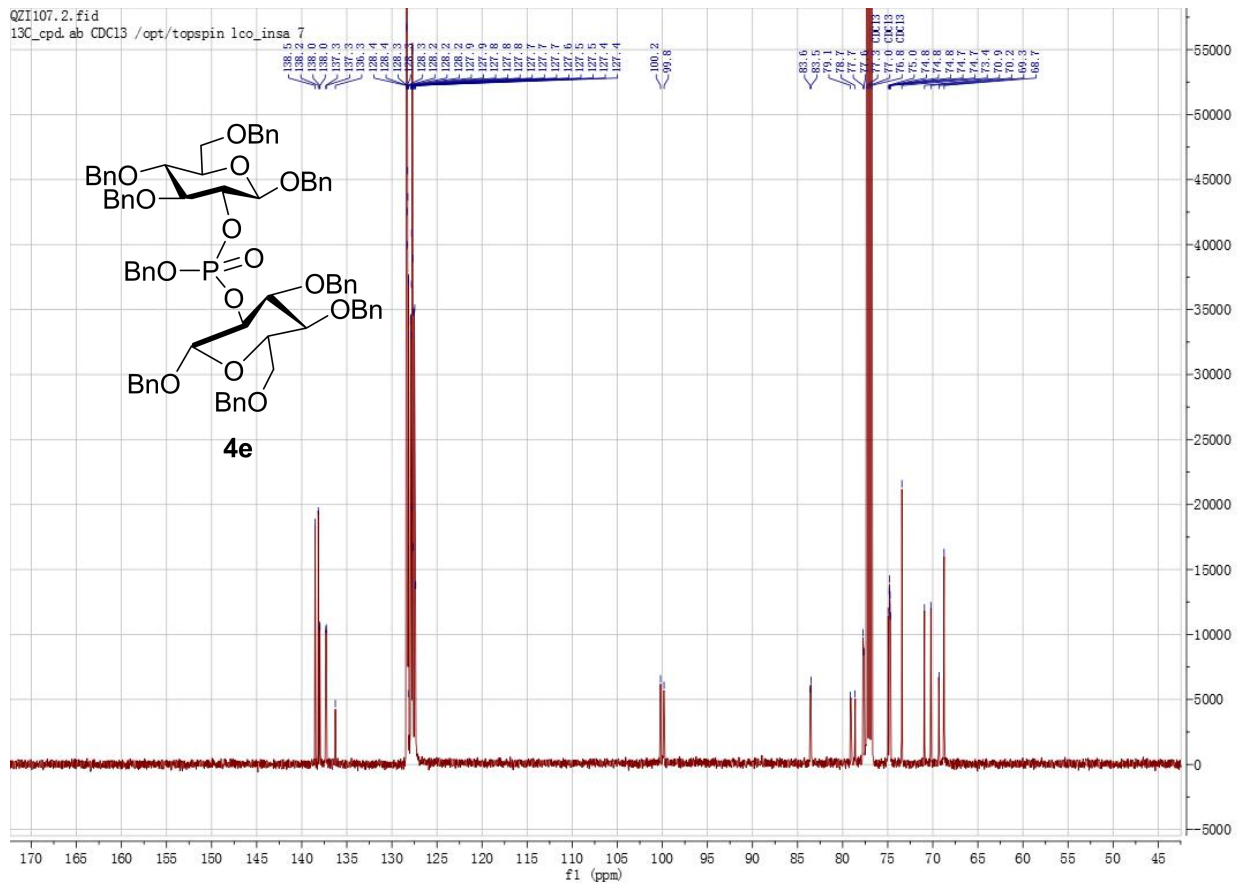


QZ1192c. 7. fid
31P_cpd CDC13 /opt/topspin lco_insa 11









QZ1107P.1.fid
31P non decouple {1H}
31P_32

