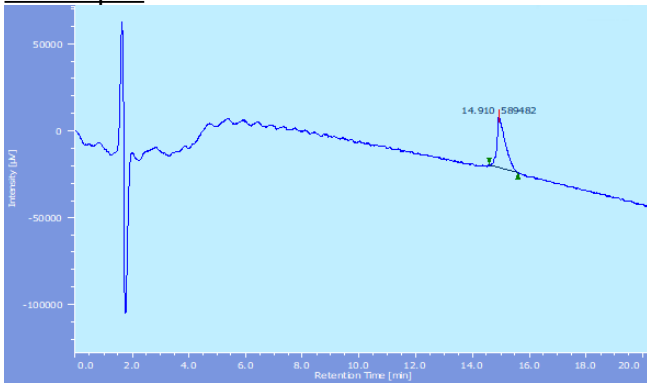


Design of disruptors of the Hsp90-Cdc37 interface.

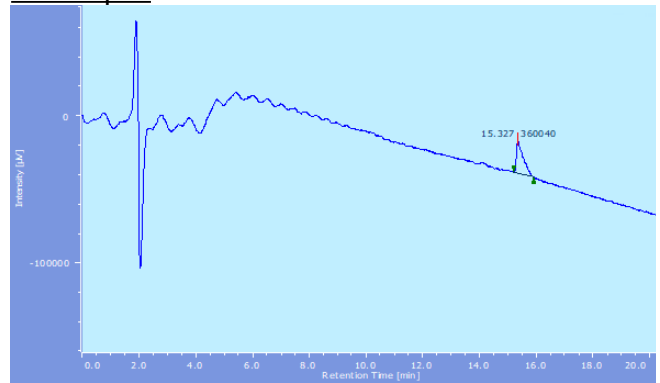
Ilda D'Annessa, Naama Hurwitz, Valentina Pirota, Giovanni Luca Beretta, Stella Tinelli, Mark Woodford, Mauro Freccero, Mehdi Mollapour, Nadia Zaffaroni, Haim Wolfson,* Giorgio Colombo*

UPLC characterization ($\lambda = 210$ nm, method B)

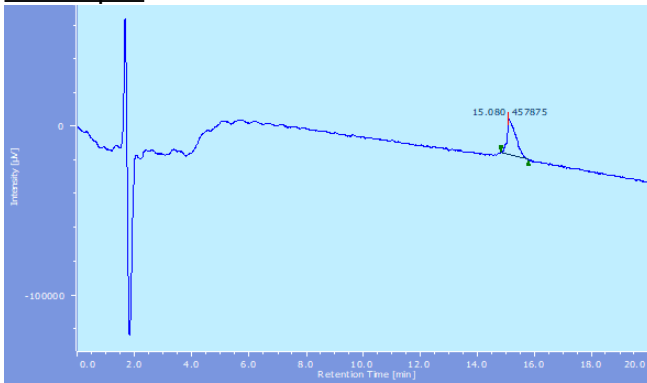
Cdc37p1:



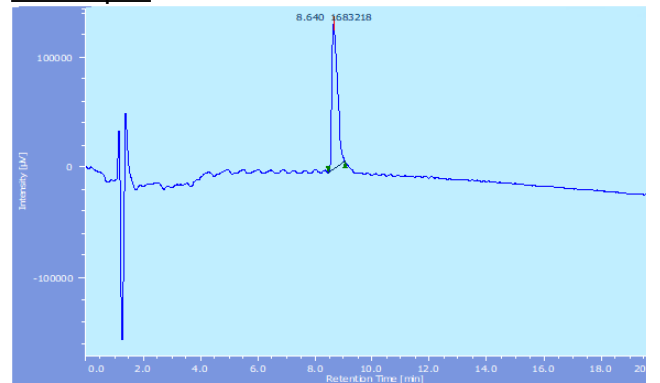
Cdc37p2:



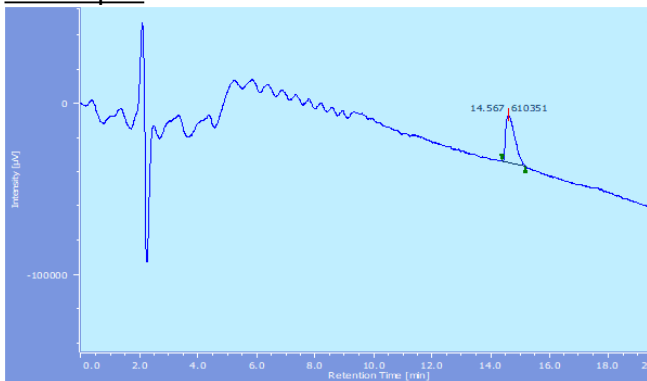
Cdc37p3:



Cdc37p4:

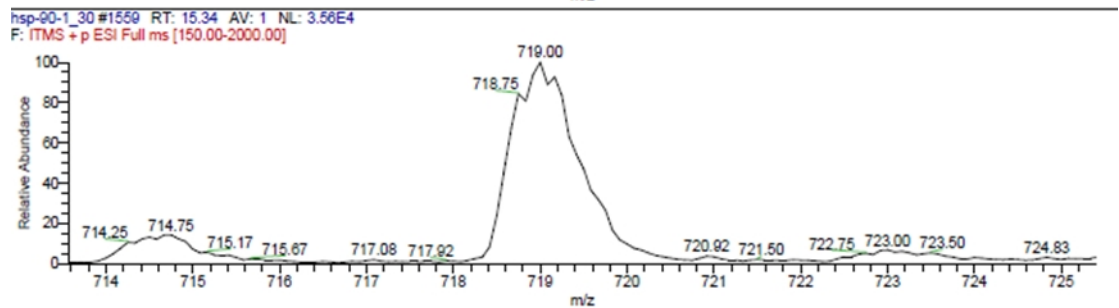
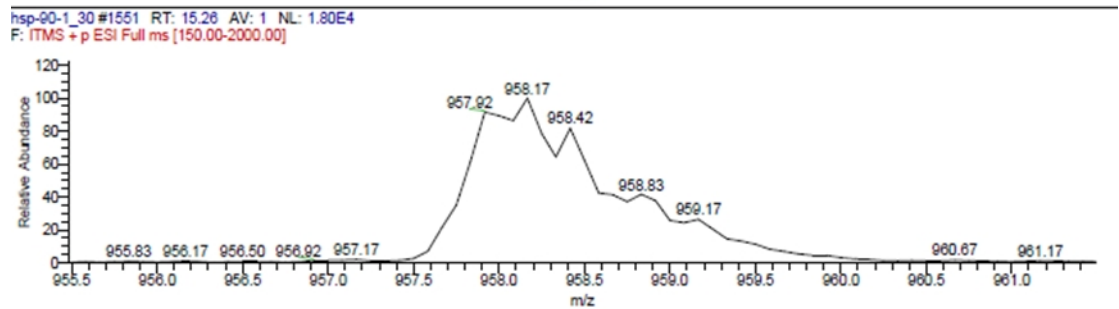
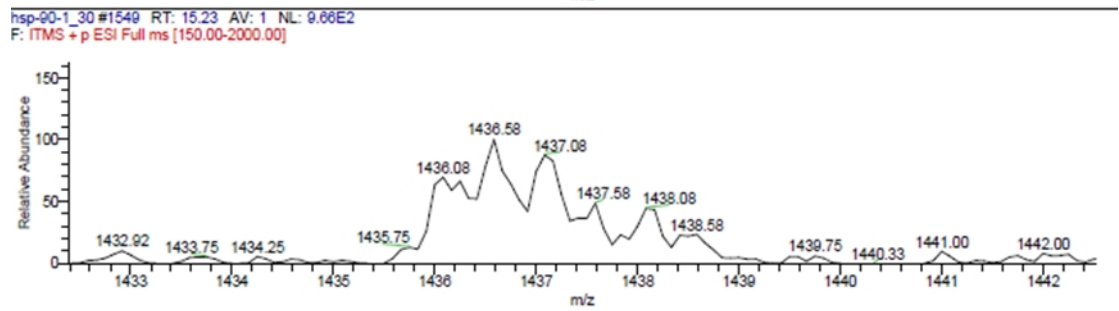
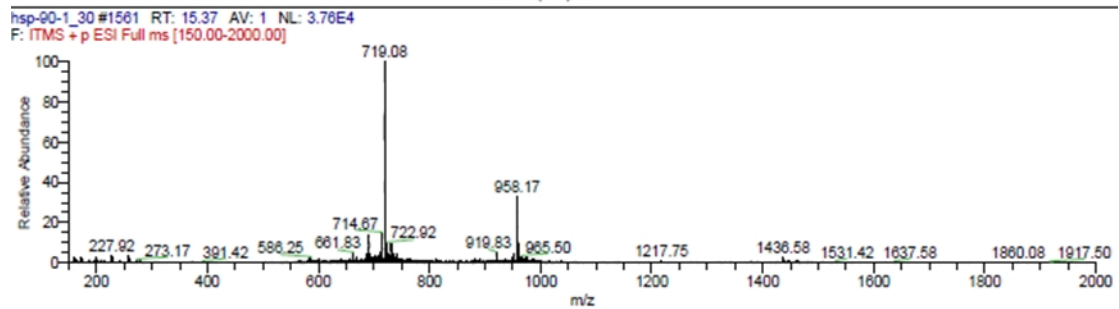
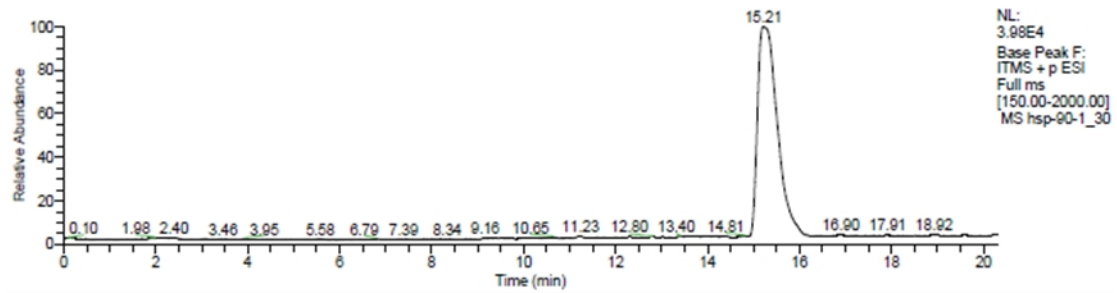


Cdc37p5:

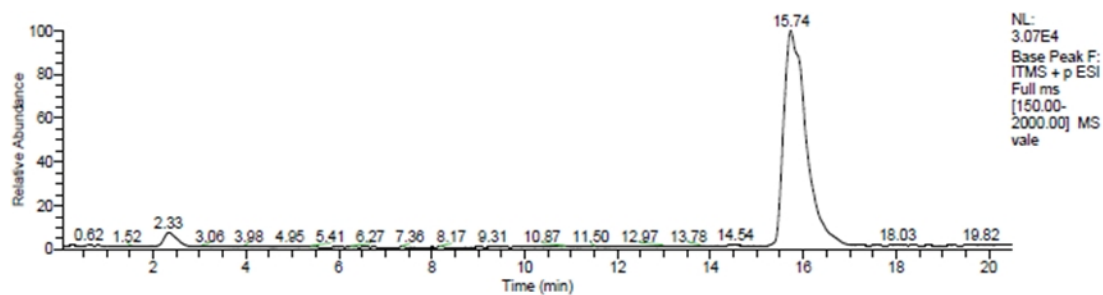


ESI-MS characterization

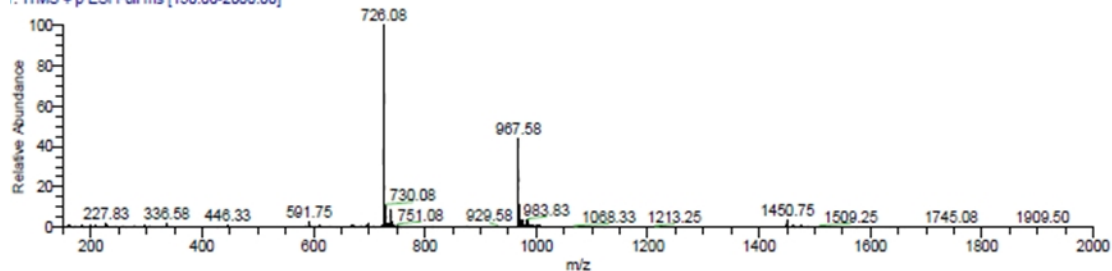
Cdc37p1



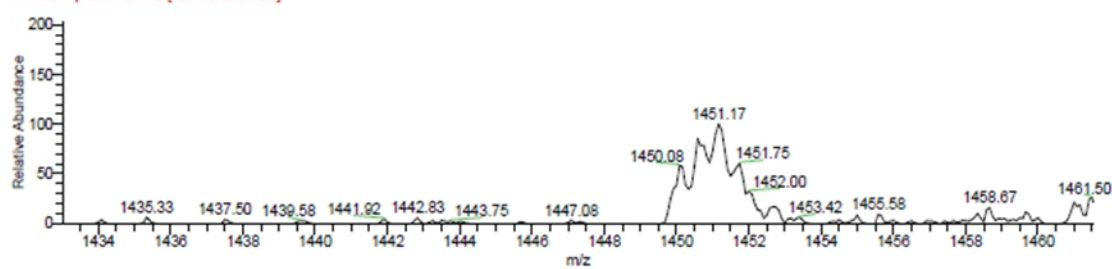
Cdc37p2



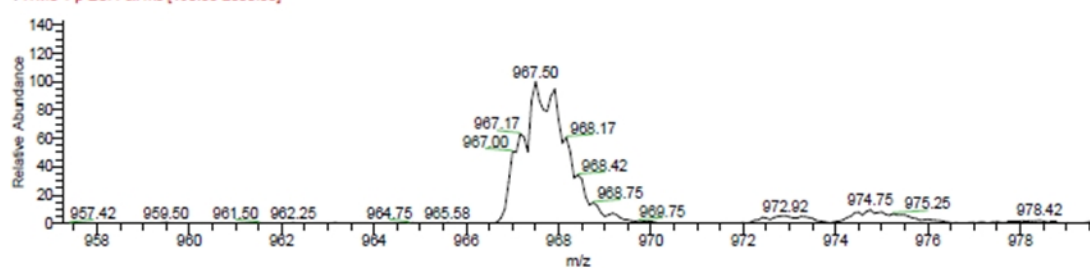
Peak #1485 RT: 15.76 AV: 1 NL: 3.22E4
ITMS + p ESI Full ms [150.00-2000.00]



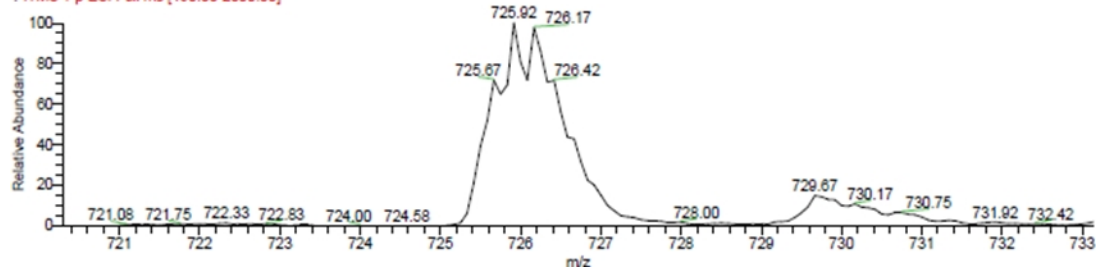
Peak #1489 RT: 15.81 AV: 1 NL: 8.37E2
ITMS + p ESI Full ms [150.00-2000.00]



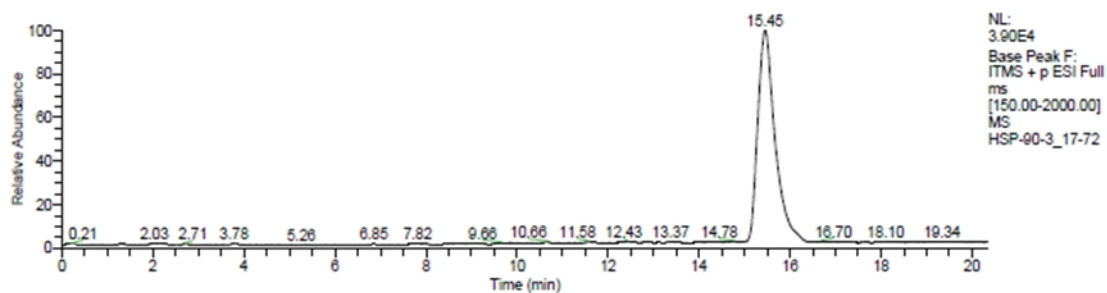
Peak #1477 RT: 15.68 AV: 1 NL: 1.33E4
ITMS + p ESI Full ms [150.00-2000.00]



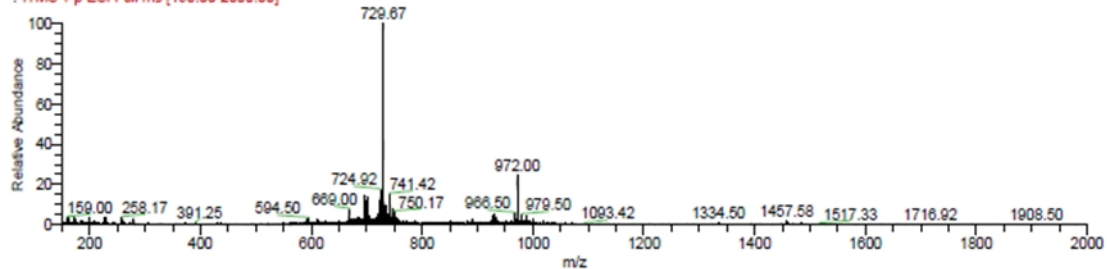
Peak #1507 RT: 16.01 AV: 1 NL: 1.82E4
ITMS + p ESI Full ms [150.00-2000.00]



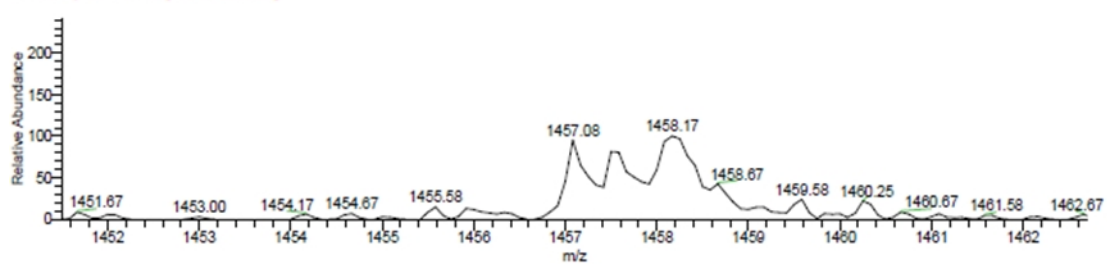
Cdc37p3



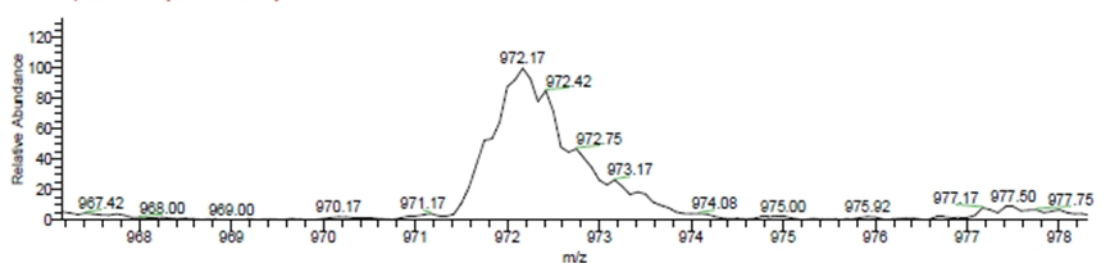
HSP-90-3_17-72 #1425 RT: 15.65 AV: 1 NL: 2.39E4
ITMS + p ESI Full ms [150.00-2000.00]



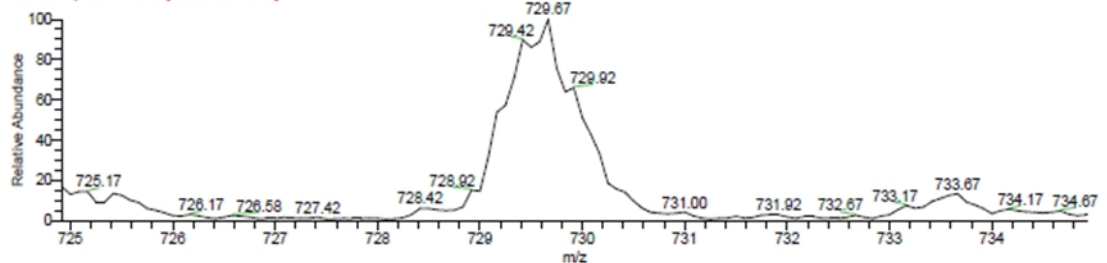
HSP-90-3_17-72 #1413 RT: 15.61 AV: 1 NL: 8.62E2
ITMS + p ESI Full ms [150.00-2000.00]



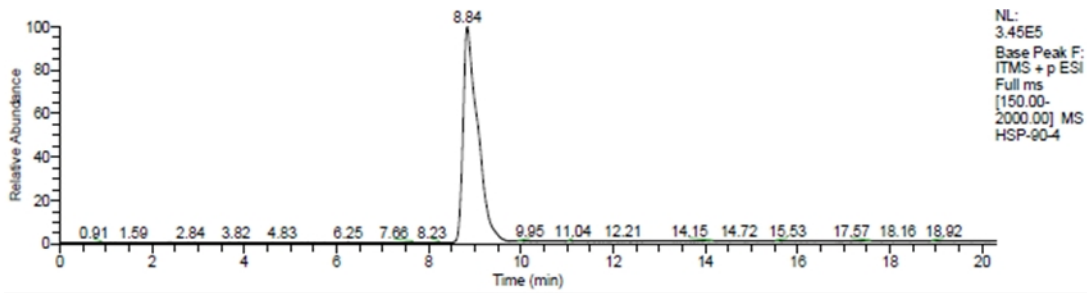
HSP-90-3_17-72 #1411 RT: 15.49 AV: 1 NL: 1.08E4
ITMS + p ESI Full ms [150.00-2000.00]



HSP-90-3_17-72 #1431 RT: 15.72 AV: 1 NL: 1.45E4
ITMS + p ESI Full ms [150.00-2000.00]

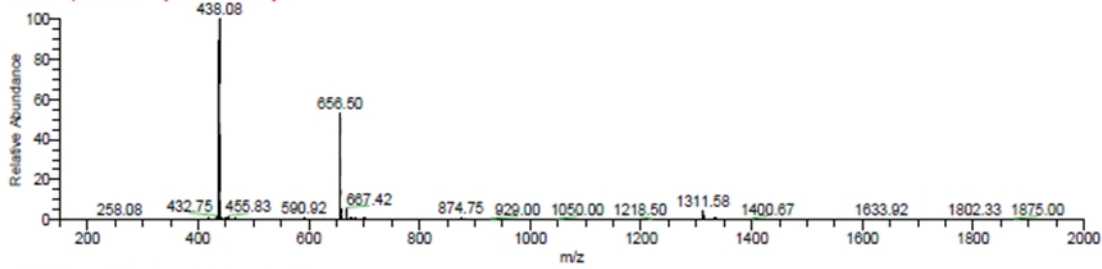


Cdc37p4



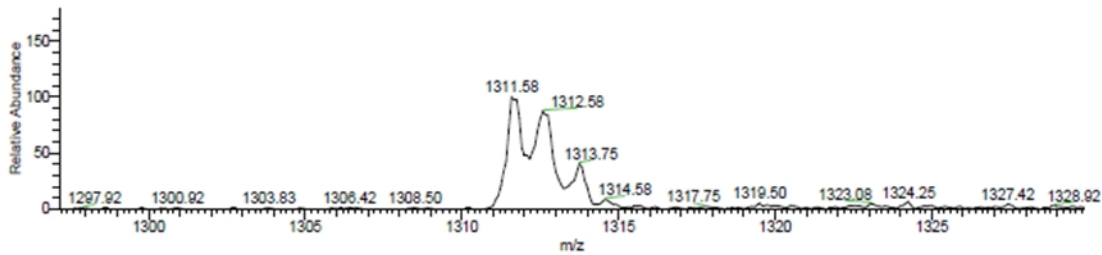
HSP-90-4 #895 RT: 8.82 AV: 1 NL: 4.01E5

F: ITMS + p ESI Full ms [150.00-2000.00]



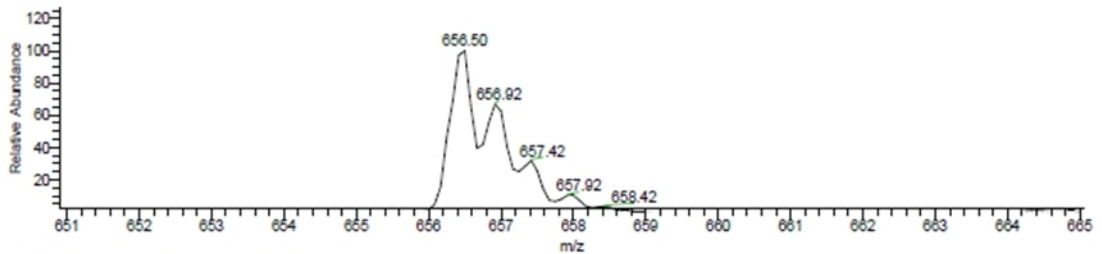
HSP-90-4 #895 RT: 8.82 AV: 1 NL: 1.90E4

F: ITMS + p ESI Full ms [150.00-2000.00]



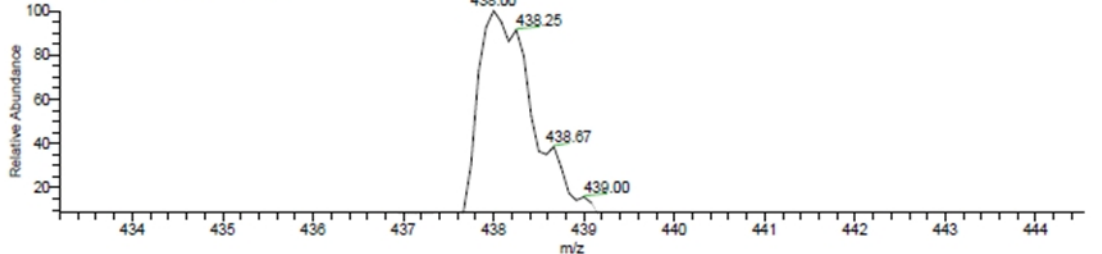
HSP-90-4 #905 RT: 8.92 AV: 1 NL: 2.07E5

F: ITMS + p ESI Full ms [150.00-2000.00]

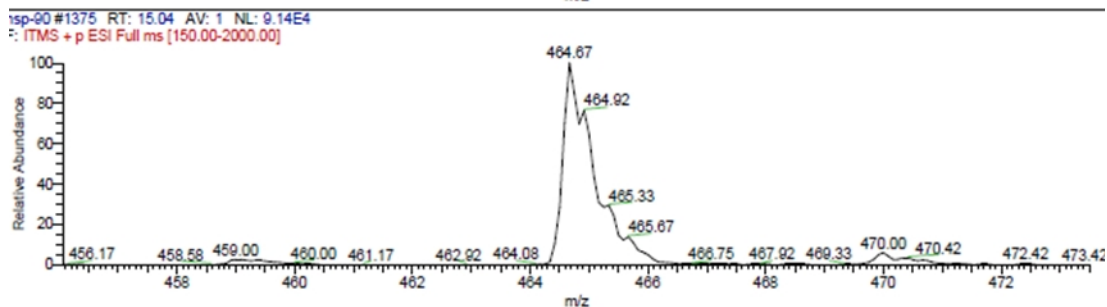
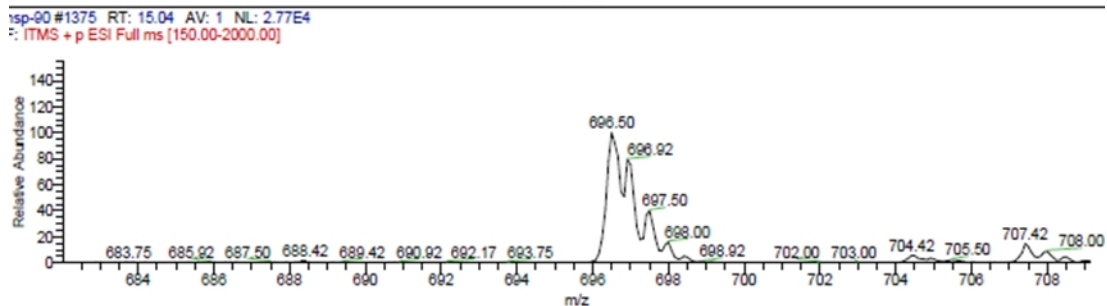
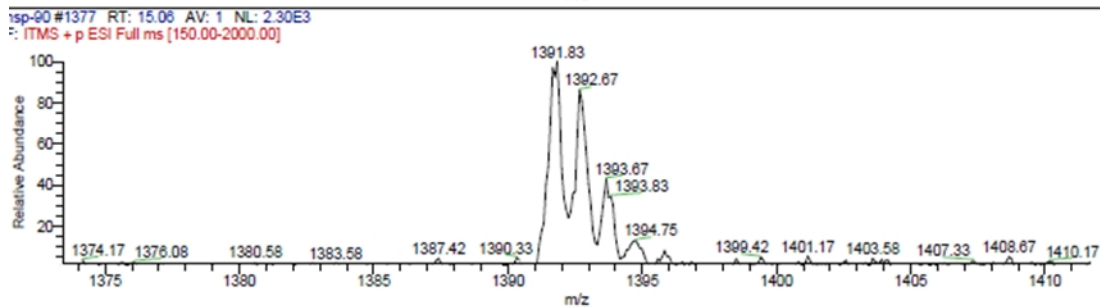
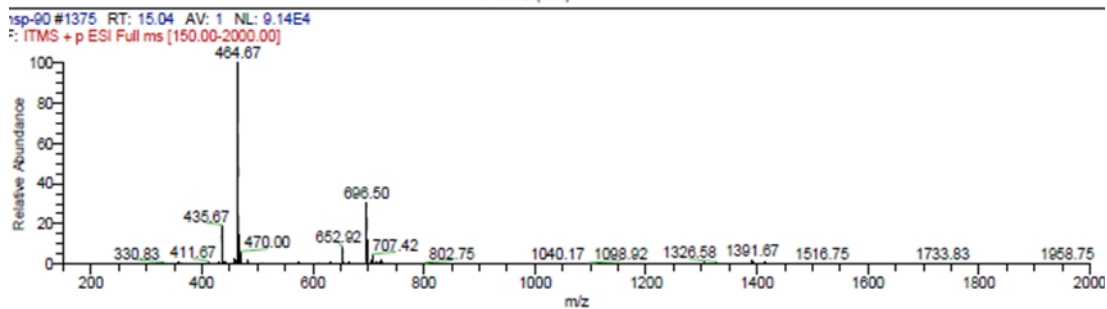
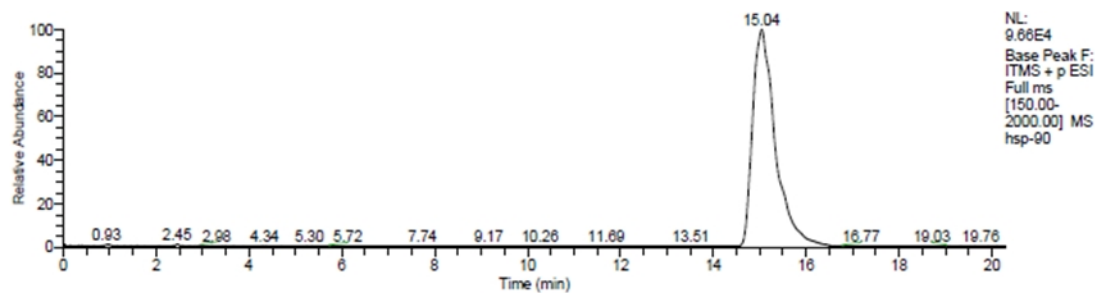


HSP-90-4 #911 RT: 8.97 AV: 1 NL: 1.71E5

F: ITMS + p ESI Full ms [150.00-2000.00]



Cdc37p5



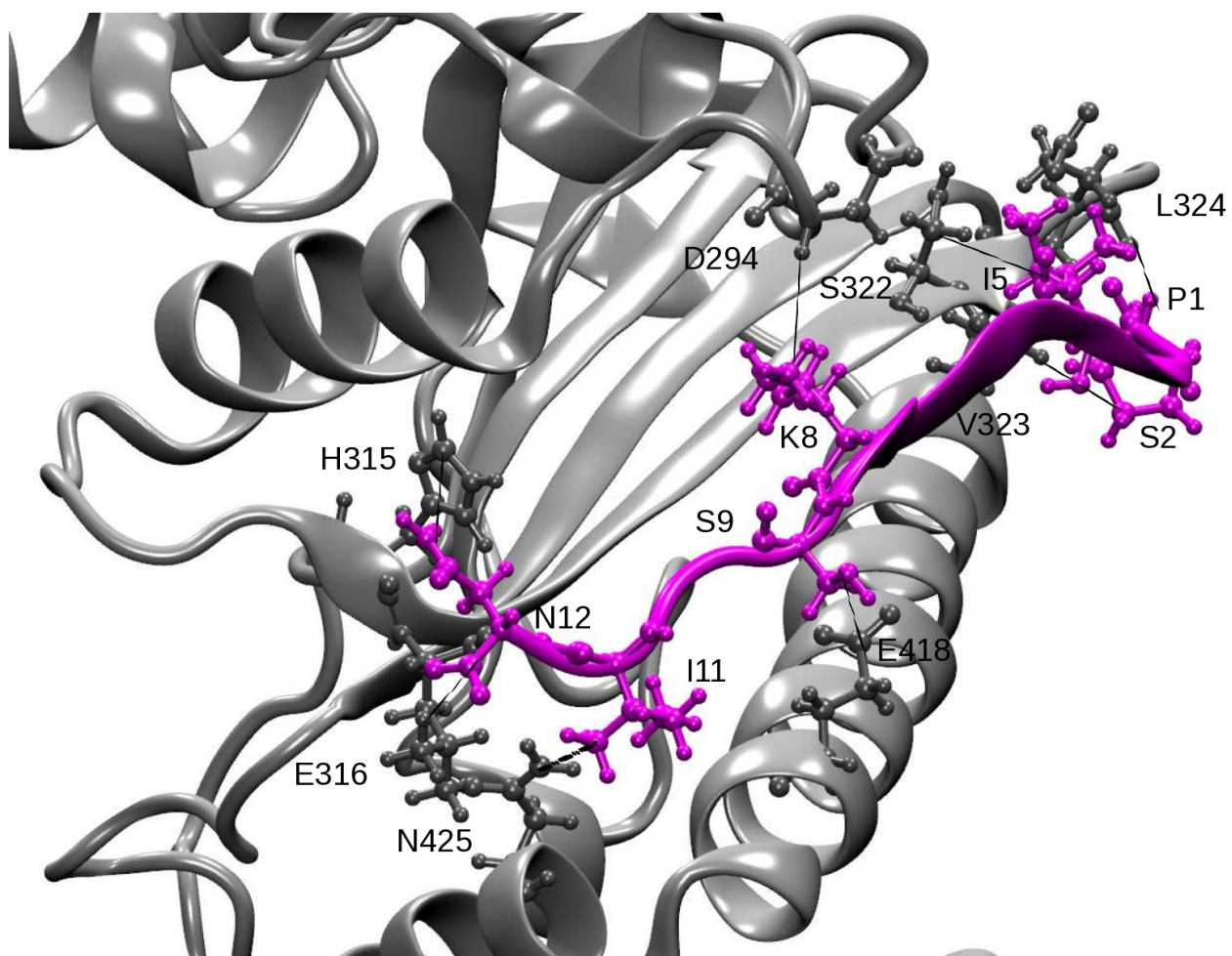


Figure S1. Map of the hydrogen bonds network between Hsp90 (light grey) and the newly designed peptide Cdc37p5 (magenta) as detected along molecular dynamics simulation of the Hsp90-Cdc37p5 complex.