

Figure S1. Quantitative analysis for scratching wound healing assay. * $P < 0.05$ and ** $P < 0.001$ vs. Control; # $P < 0.001$ vs Control, Sorafenib, and CaLa. Results are mean \pm S.D.

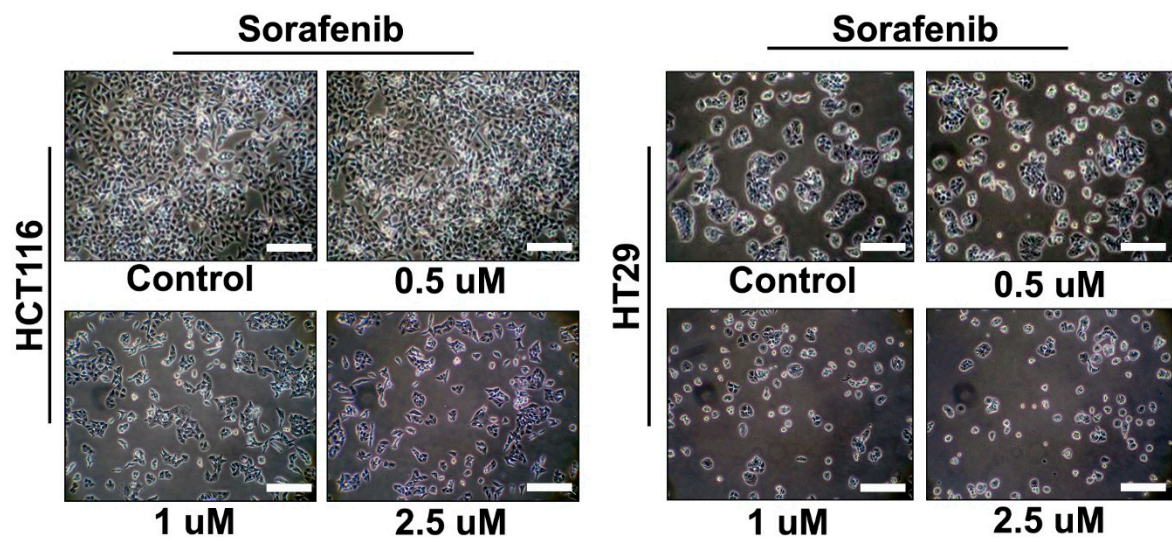


Figure S2. Cell morphology following sorafenib treatment on colorectal cancer cells. Scale bars: 100 μm .

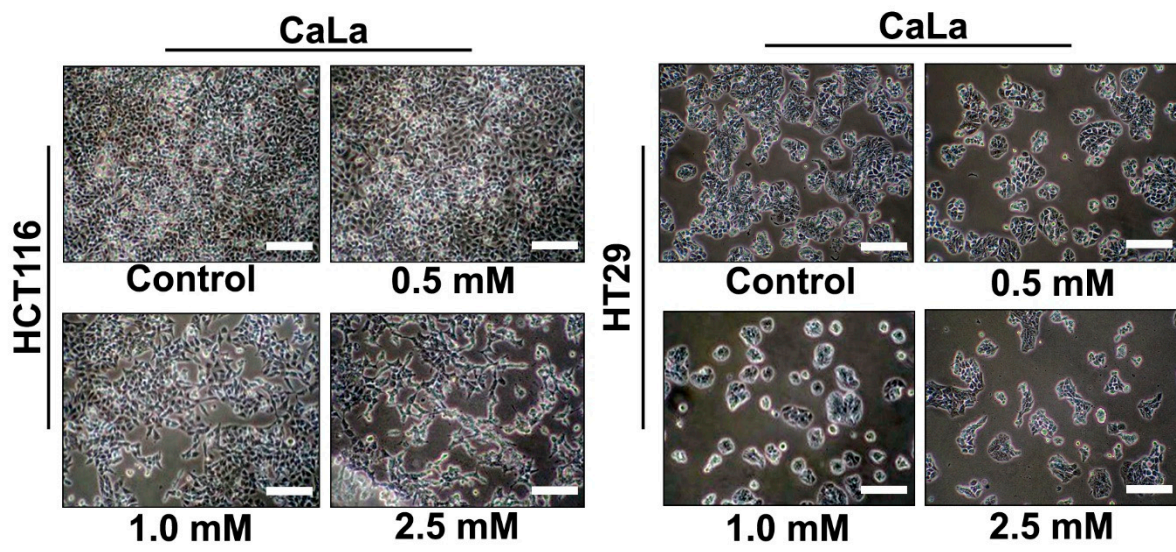


Figure S3. Cell morphology following lactate calcium salt (CaLa) treatment on colorectal cancer cells. Scale bars: 100 μ m.

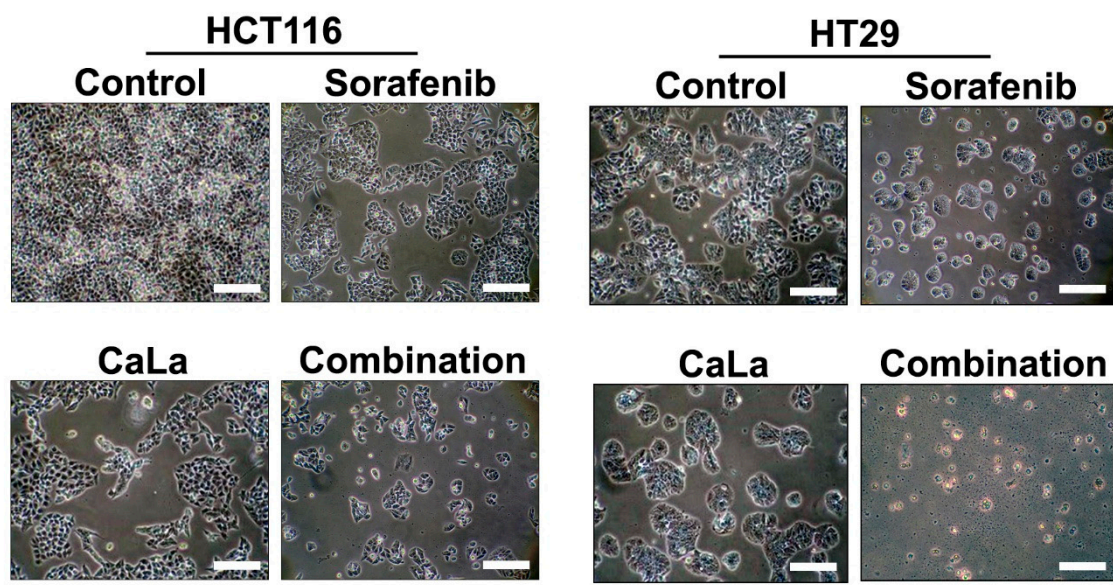


Figure S4. Cell morphology following combination treatment on colorectal cancer cells. Scale bars: 100 μm . CaLa: lactate calcium salt.