

Supplementary Materials

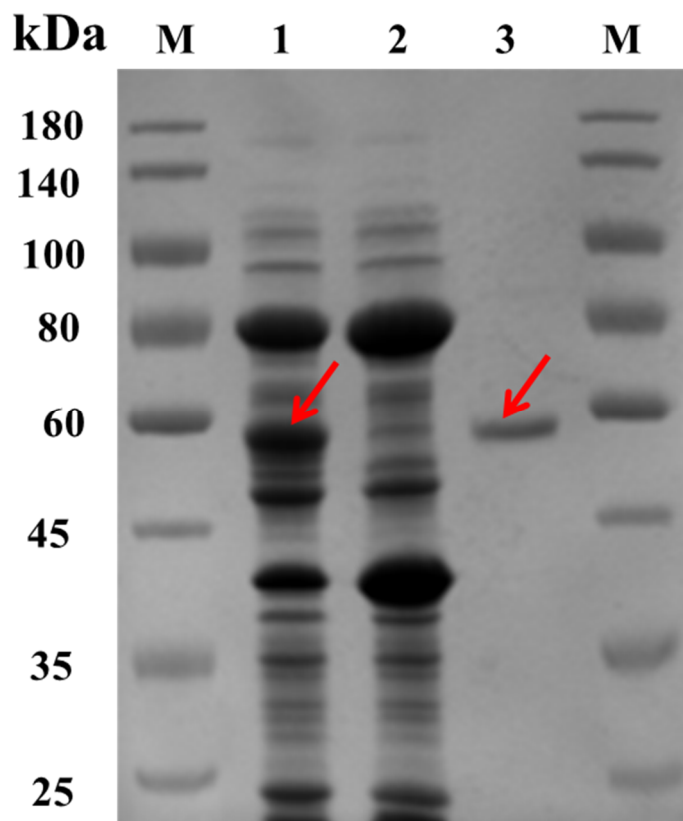


Figure S1. SDS-PAGE analyses of the recombinant OcutG1 protein. 1, the crude extract of BL21(DE3)[pET28a-OcutG1+pKJE7]; 2, the crude extract of BL21(DE3)[pET28a +pKJE7]; 3, the purified OcutG1; M, protein molecular markers; the arrows show the expressed OcutG1.

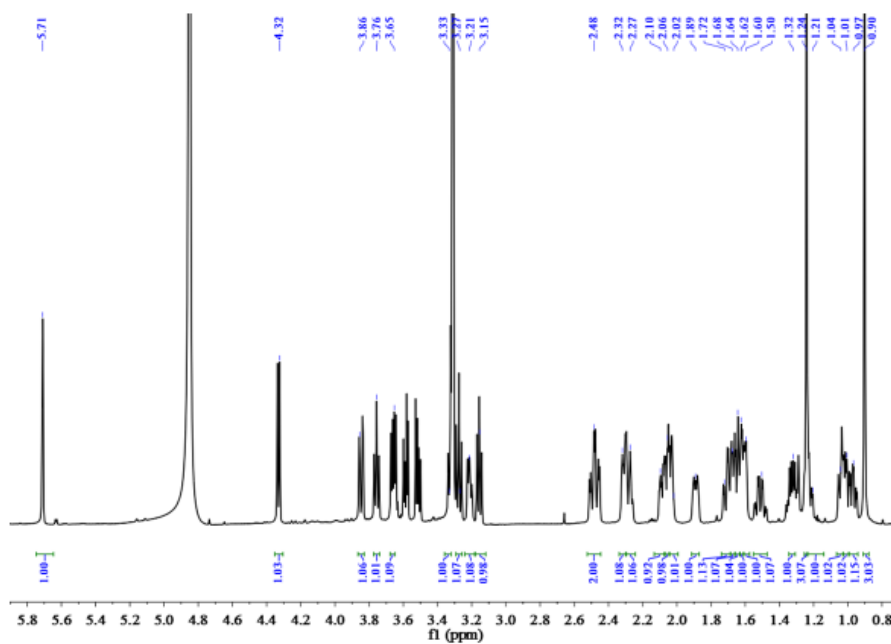


Figure S2. ^1H NMR spectrum of **1a** (600 MHz, Methanol- d_4).

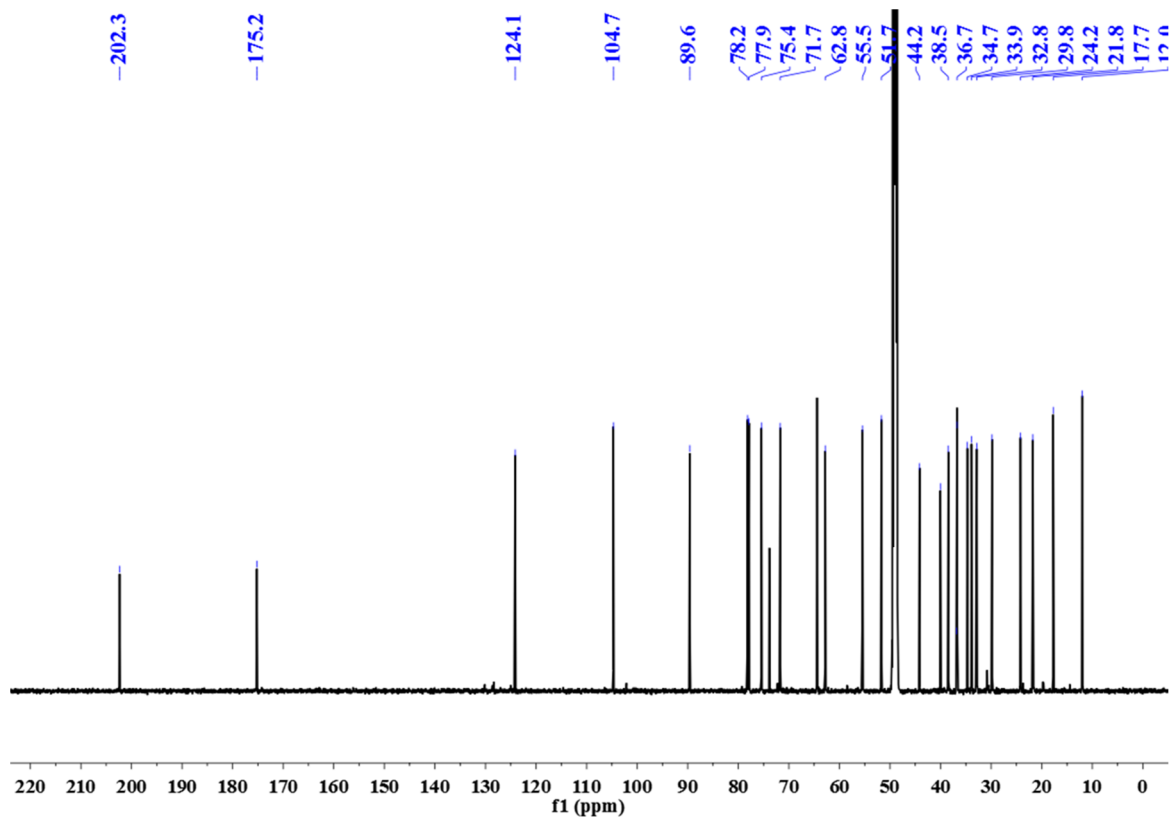


Figure S3. ^{13}C NMR spectrum of **1a** (150 MHz, Methanol- d_4).

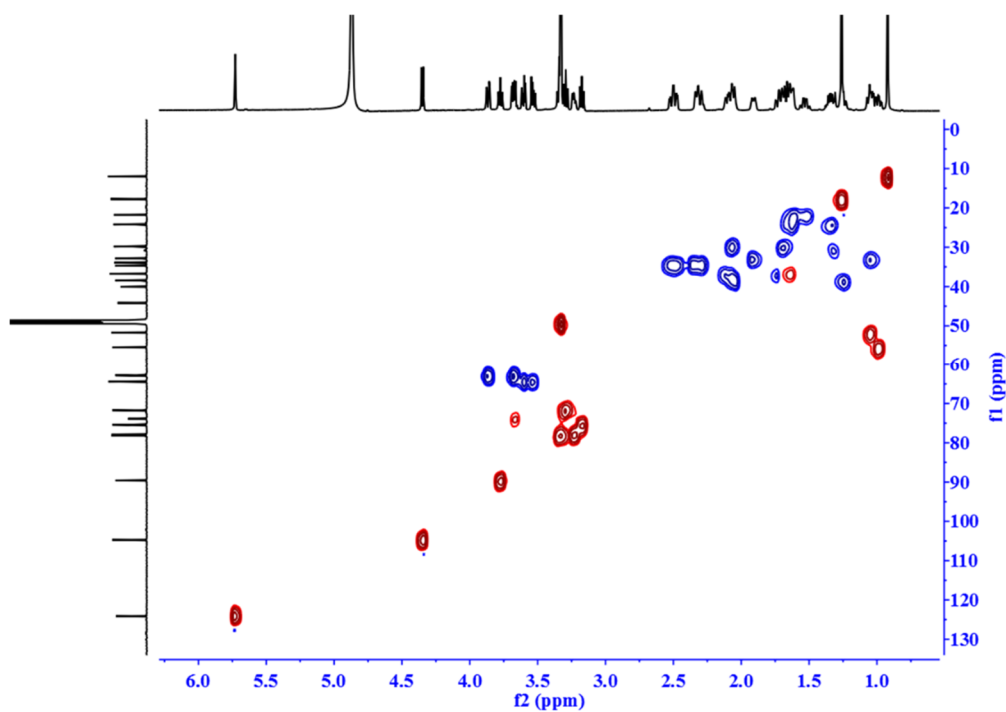


Figure S4. HSQC spectrum of **1a**.

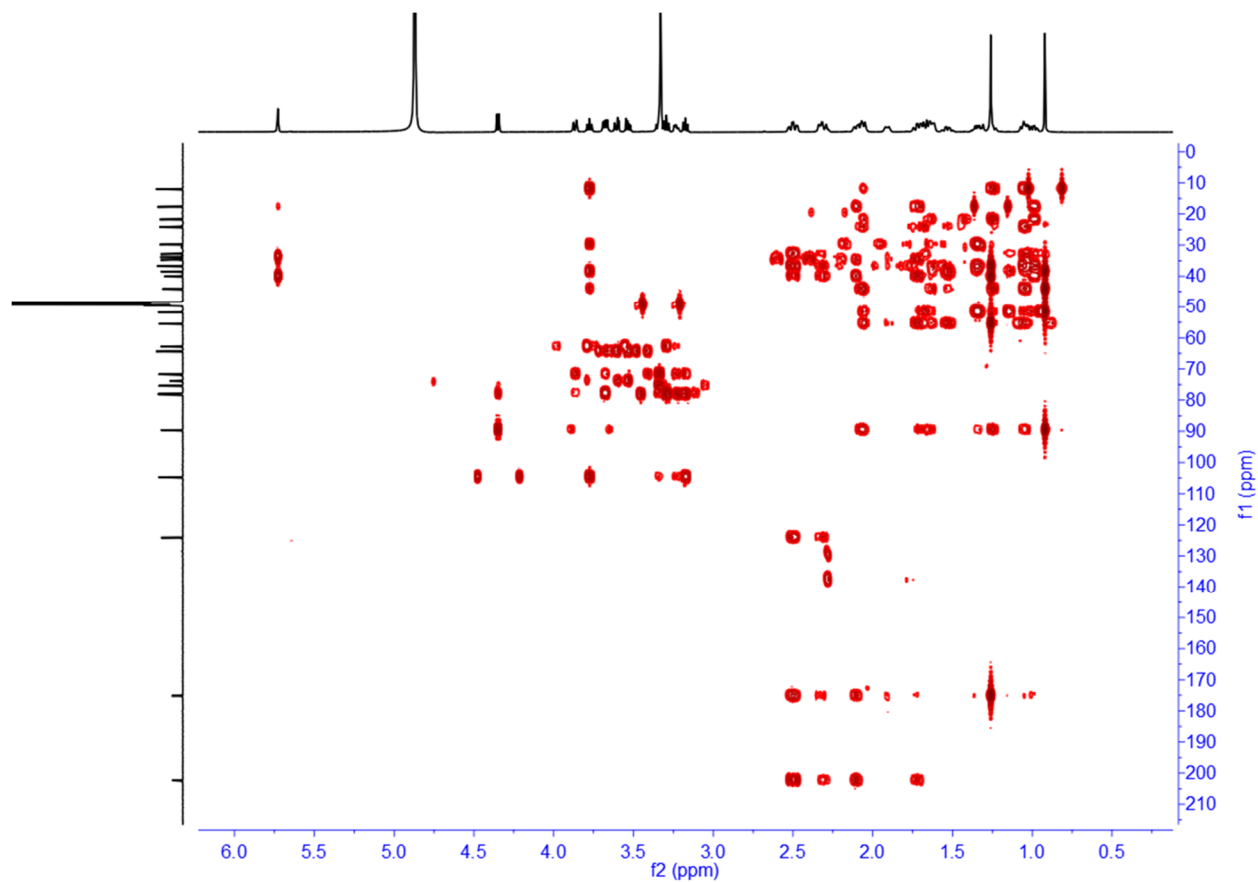


Figure S5. HMBC spectrum of 1a.

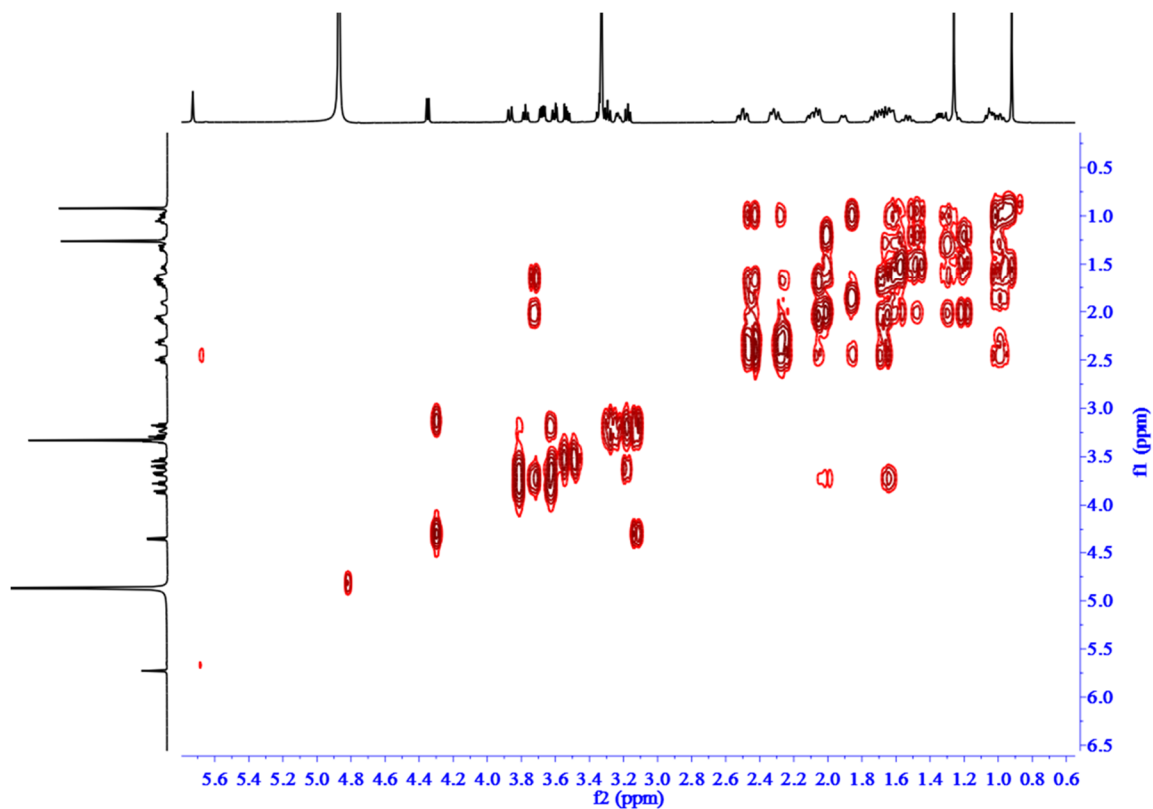


Figure S6. COSY spectrum of 1a.

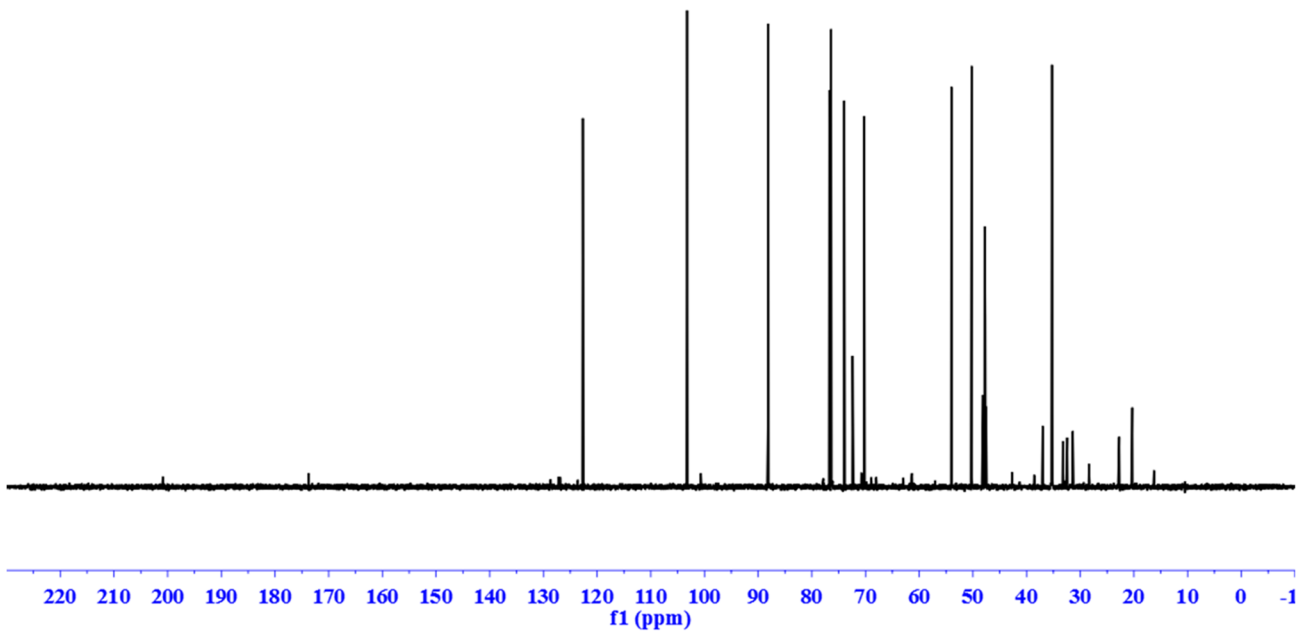


Figure S7. The DEPT-90 ¹³C spectrum of **1a**.

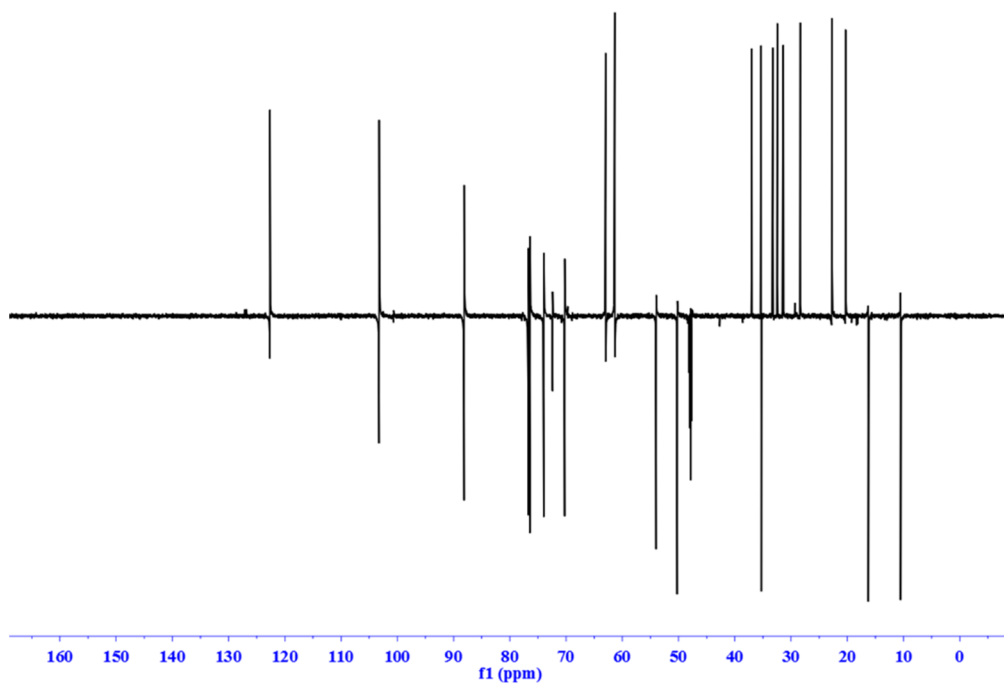


Figure S8. The DEPT-135 ¹³C spectrum of **1a**.

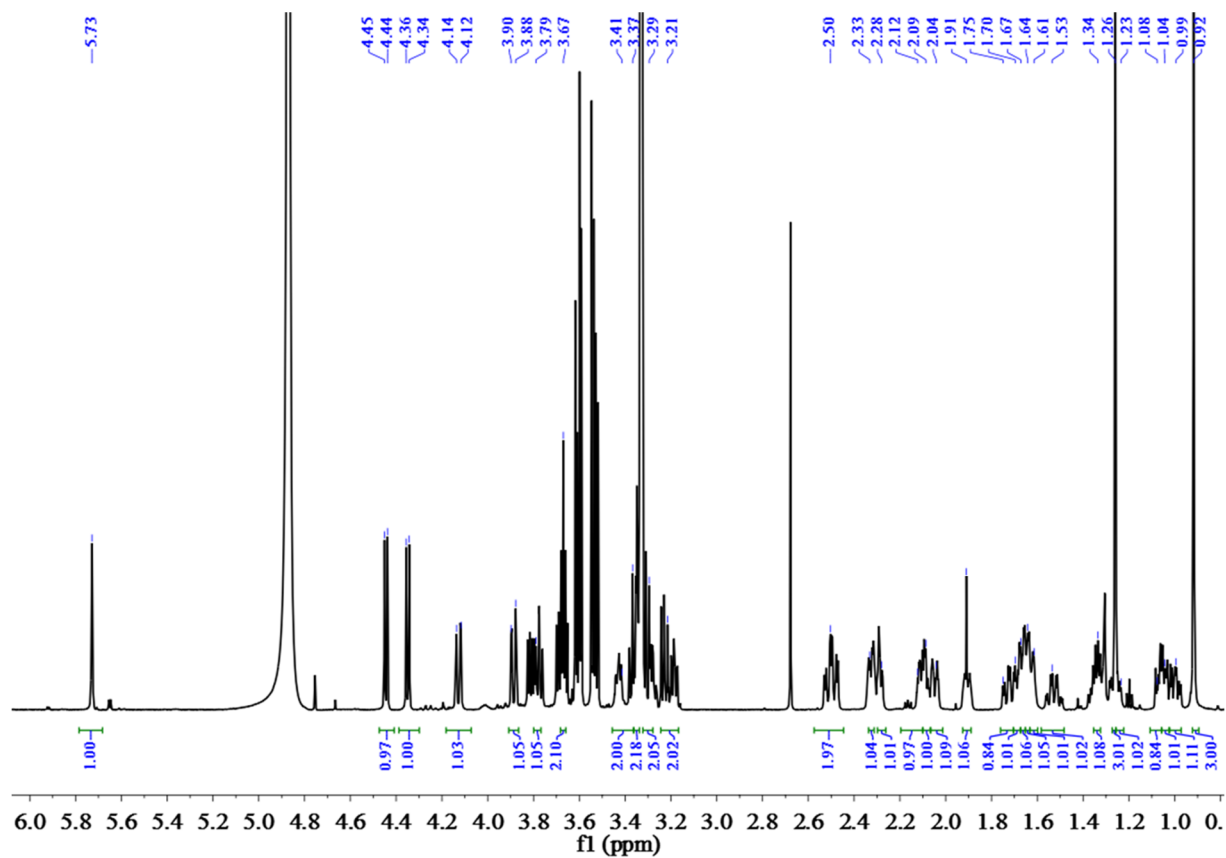


Figure S9. ^1H NMR spectrum of **1b** (600 MHz, Methanol- d_4).

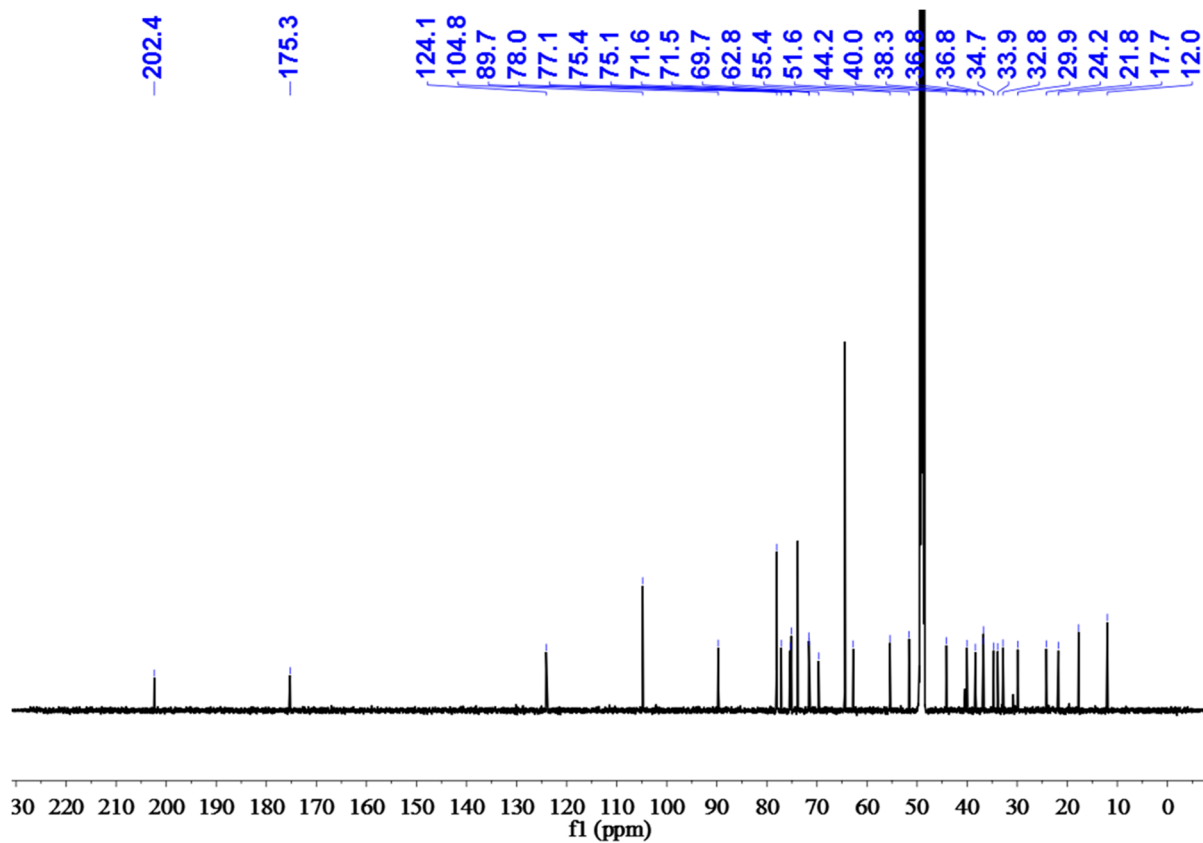


Figure S10. ^{13}C NMR spectrum of **1b** (150 MHz, Methanol- d_4).

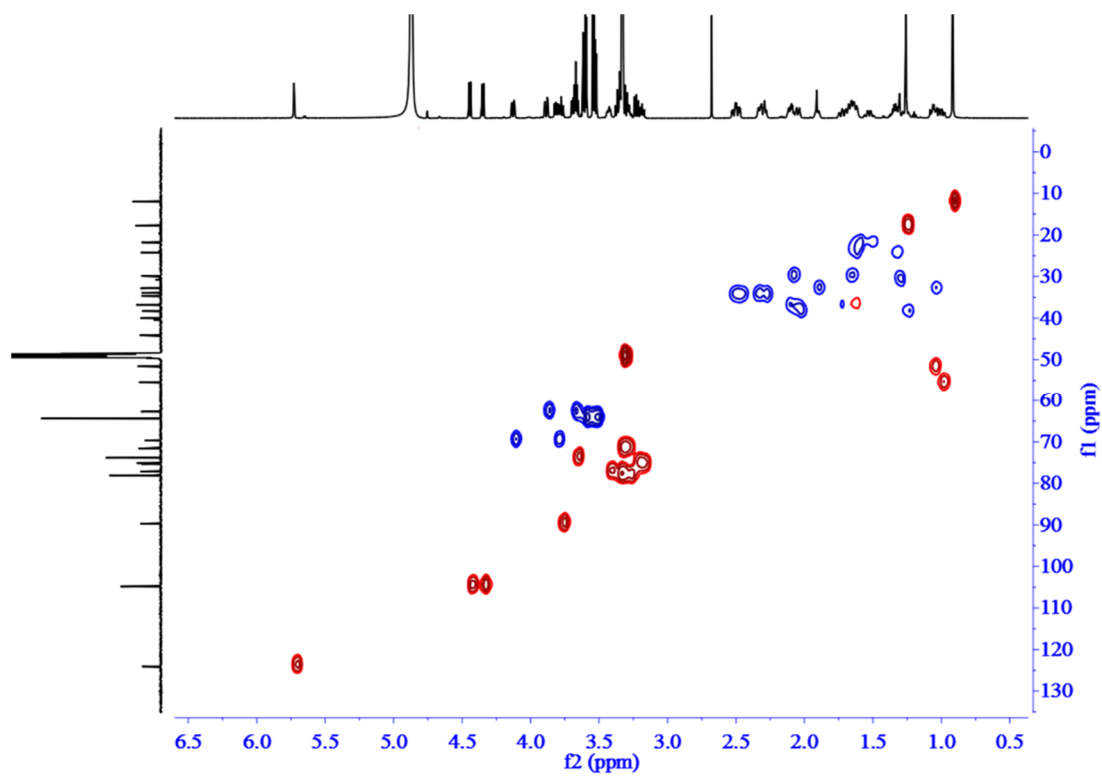


Figure S11. HSQC spectrum of **1b**.

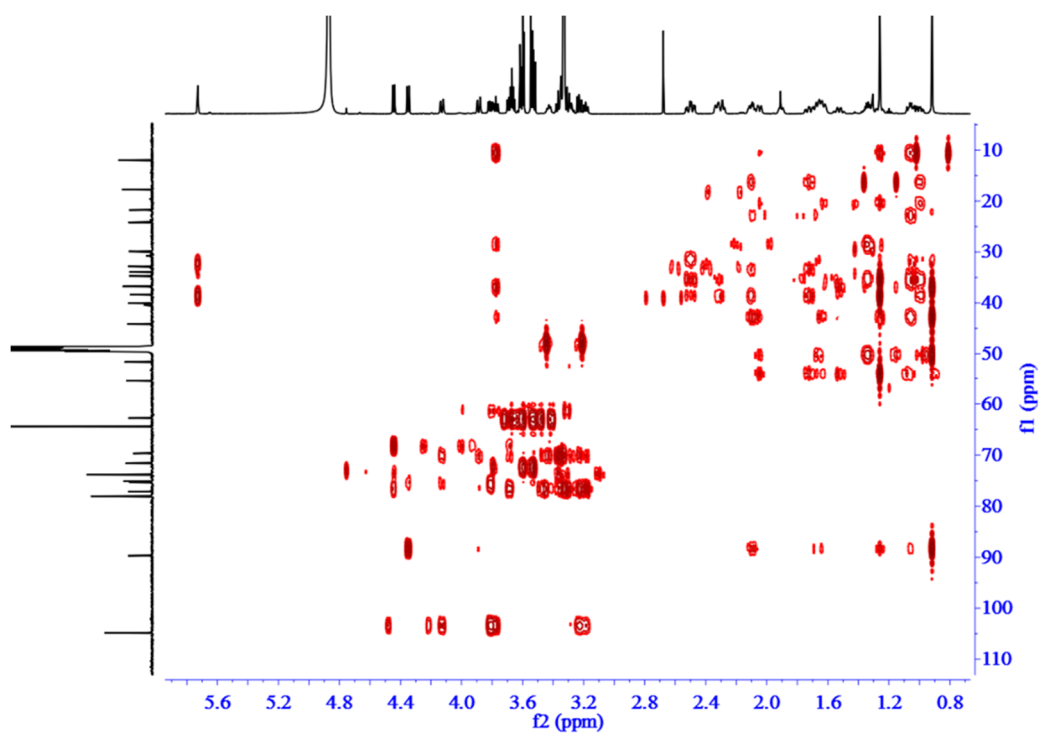


Figure S12. HMBC spectrum of **1b**.

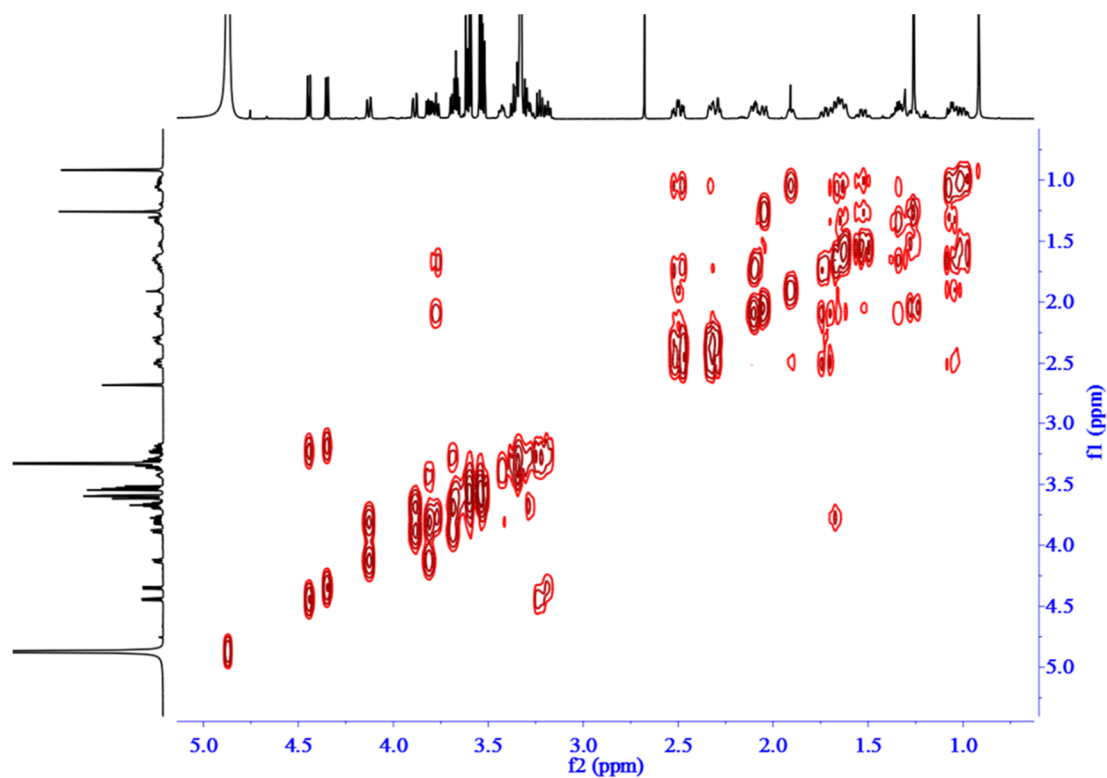


Figure S13. COSY spectrum of 1b.

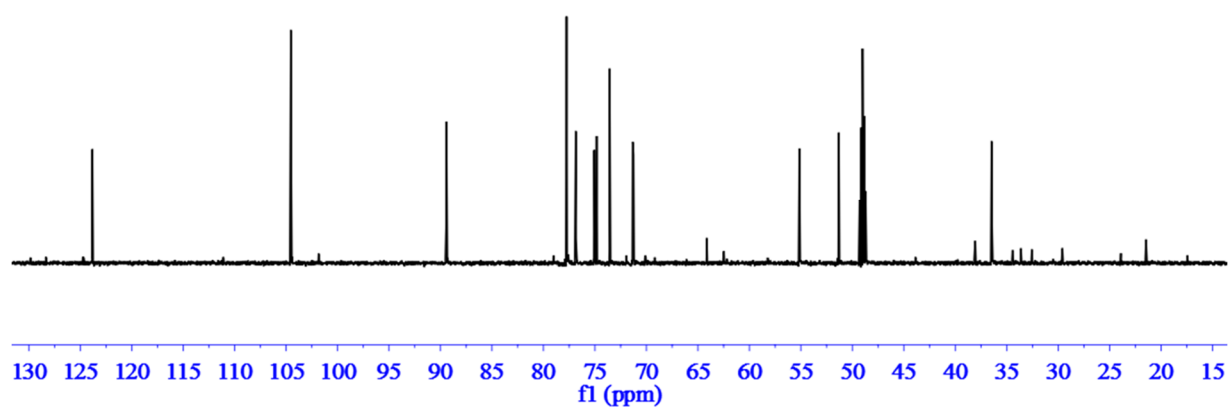


Figure S14. The DEPT-90 ¹³C spectrum of 1b.

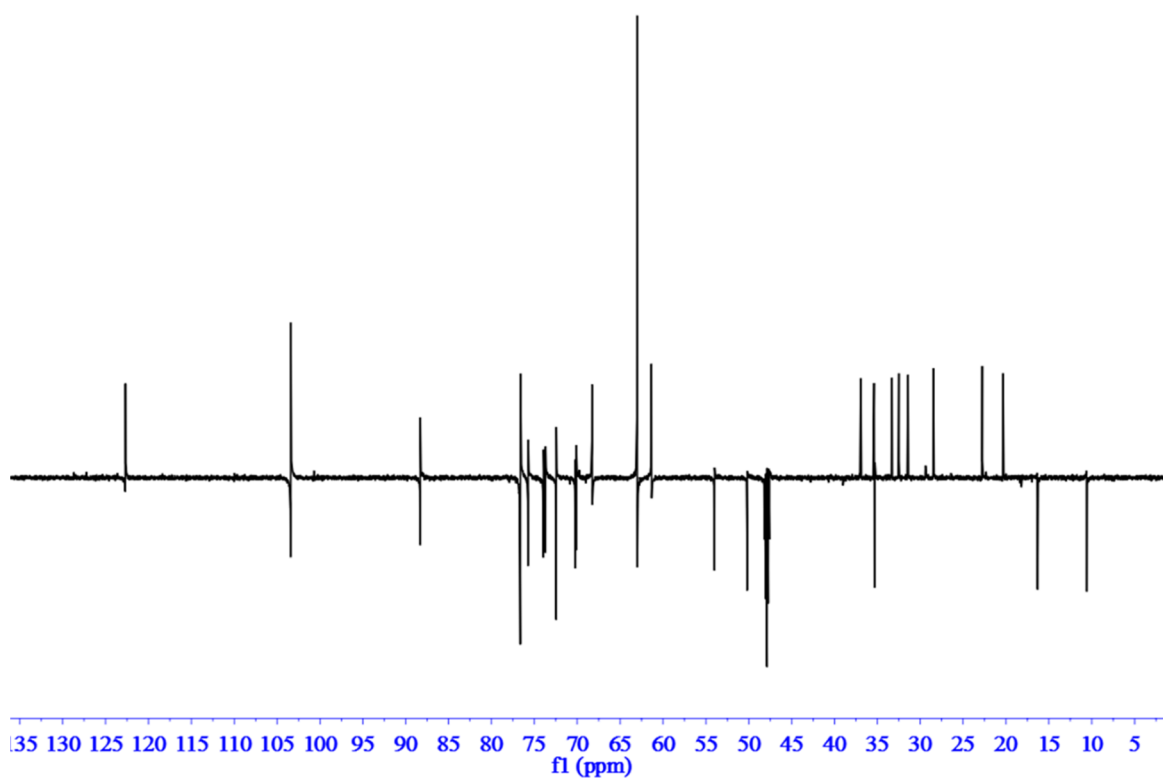


Figure S15. The DEPT-135 ^{13}C spectrum of **1b**.