

Figure S1. IgE immunoblots with individual sera. IgE immunoblot of proteins of pistachio A) and cashew (B) of untreated (control,ST) and DIC treated samples (20µg protein/lane). IgE immunoblots were carried out using individual sera from 11 patients allergic to pistachio and cashew (P1-P11). Lane C represents a negative control serum.

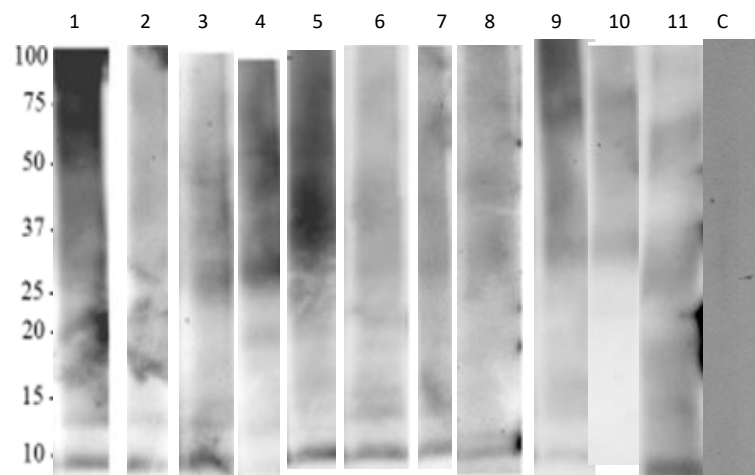
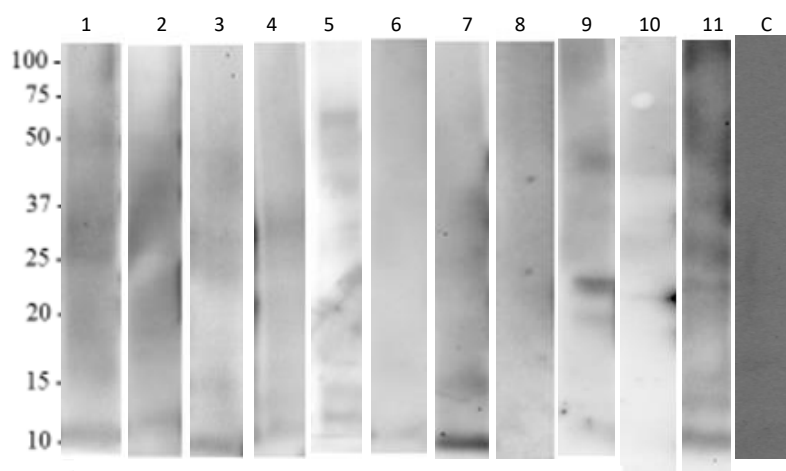
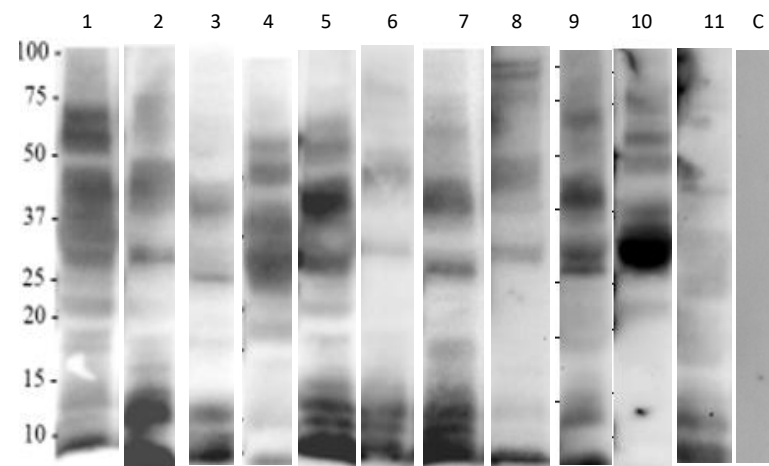
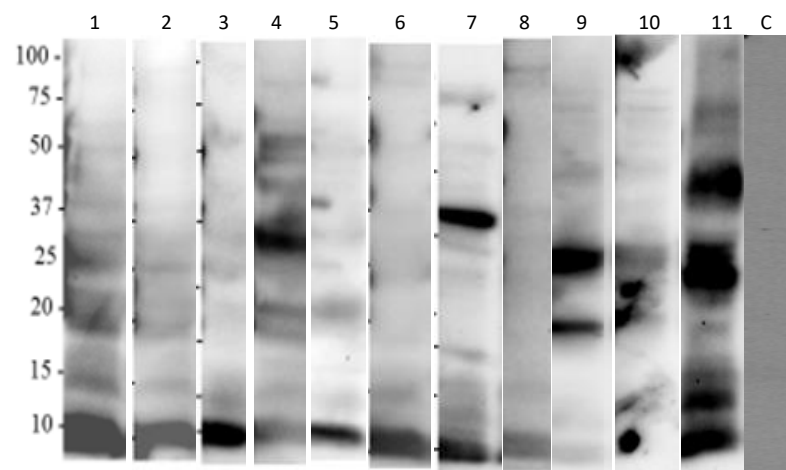


Figure S2. IgE immunoreactive protein bands. Percentage of patients that immunoreact with each protein band of pistachio (A) and cashew (B) untreated and treated by DIC 7 bar 120 seconds. Analysis performed with Quantity One Software (BioRad).

