

## Supplemental Figure 1.

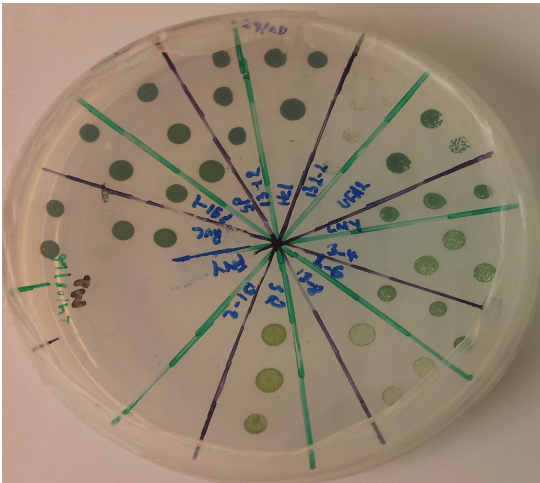
Original plates from screening of auto-, mixo- and hetero-trophic growth of 14 algal strains isolated in Sweden.

The strains are designated 2-6 (*Desmodesmium* sp.), 3-4 (*Coelastrella* sp.), 13-1 (*Chlorella vulgaris*), 13-2 (*Chlorella vulgaris*), 13-8 (*Scenedesmus obliquus*), SP (*Scenedesmus obliquus*), B1-2 (*Monorapidium* sp.), UFA-2 (*Scotiellopsis reticulata*), LNY (*Chlorella vulgaris*), RUC-2 (*Desmodesmus* sp.), FNY-2 (*Ettilia pseudoalveolaris*), SQ2 (*Desmodesmus opoliensis*), MC1 (*Chlamydomonas debaryana*), P9-1 (*Micratinium* sp.).

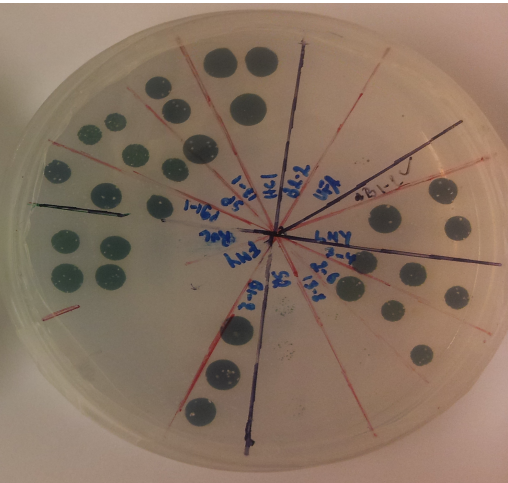
Schematic diagram showing growth of colonies of the strains on agar plates under: (A) autotrophic conditions, with 16 h light ( $100 \mu \text{mol m}^{-2} \text{s}^{-1}$ )/8 h dark cycles: (B) mixotrophic conditions with the mentioned light/dark cycles and 3 g/L glucose as a carbon source, (C) heterotrophic conditions with 3 g/L glucose as carbon source and (D) and (E) heterotrophic conditions with 2 g/L glycerol.

Supplemental Figure 1.

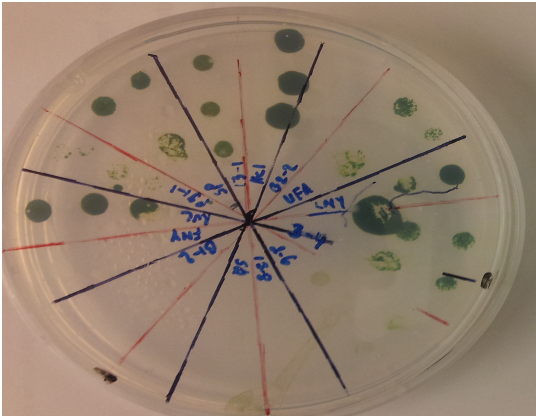
A



B



C



Supplemental Figure 1 cont.

D

E

