

SUPPLEMENTARY MATERIALS

A Chemometry of *Aldrovanda Vesiculosa* L. (Waterwheel, Droseraceae) Populations

Bartosz J. Płachno ^{1,*}, Maciej Strzemiński ^{2,*}, Sławomir Dresler ^{3*}, Lubomír Adamec ⁴, Kamila Wojas-Krawczyk ⁵, Ireneusz Sowa ², Anna Danielewicz ⁶ and Vitor F. O. Miranda ⁷

¹ Department of Plant Cytology and Embryology, Institute of Botany, Faculty of Biology, Jagiellonian University in Kraków, Gronostajowa 9 St. 30-387 Cracow, Poland; bartosz.plachno@uj.edu.pl (B.J.P.); <https://orcid.org/0000-0001-5579-5101>

² Department of Analytical Chemistry, Medical University of Lublin, Chodźki 4a, 20-093 Lublin, Poland; maciej.strzemiński@poczta.onet.pl (M.S.), i.sowa@umlub.pl (I.S.)

³ Department of Plant Physiology and Biophysics, Institute of Biological Science, Maria Curie-Skłodowska University, Akademicka 19, 20-033 Lublin, Poland; slawomir.dresler@poczta.umcs.lublin.pl (S.D.);

⁴ Department of Experimental and Functional Morphology, Institute of Botany CAS, Dukelská 135, CZ-379 01 Třeboň, Czech Republic; lubomir.adamec@ibot.cas.cz (L.A.);

⁵ Department of Pneumology, Oncology and Allergology, Medical University of Lublin, 20-090 Lublin, Poland; kamilawojas@wp.pl (K.W-K.);

⁶ Department of Paediatric Orthopaedics, Medical University of Lublin, 20-093 Lublin, Poland (A.D.); anna.danielewicz@umlub.pl;

⁷ UNESP - São Paulo State University, School of Agricultural and Veterinarian Sciences, Department of Applied Biology, Laboratory of Plant Systematics, Campus Jaboticabal, CEP 14884-900, SP, Brazil; vitor.miranda@unesp.br (V.M.);

* Correspondence: maciej.strzemiński@poczta.onet.pl; bartosz.plachno@uj.edu.pl; slawomir.dresler@poczta.umcs.lublin.pl.

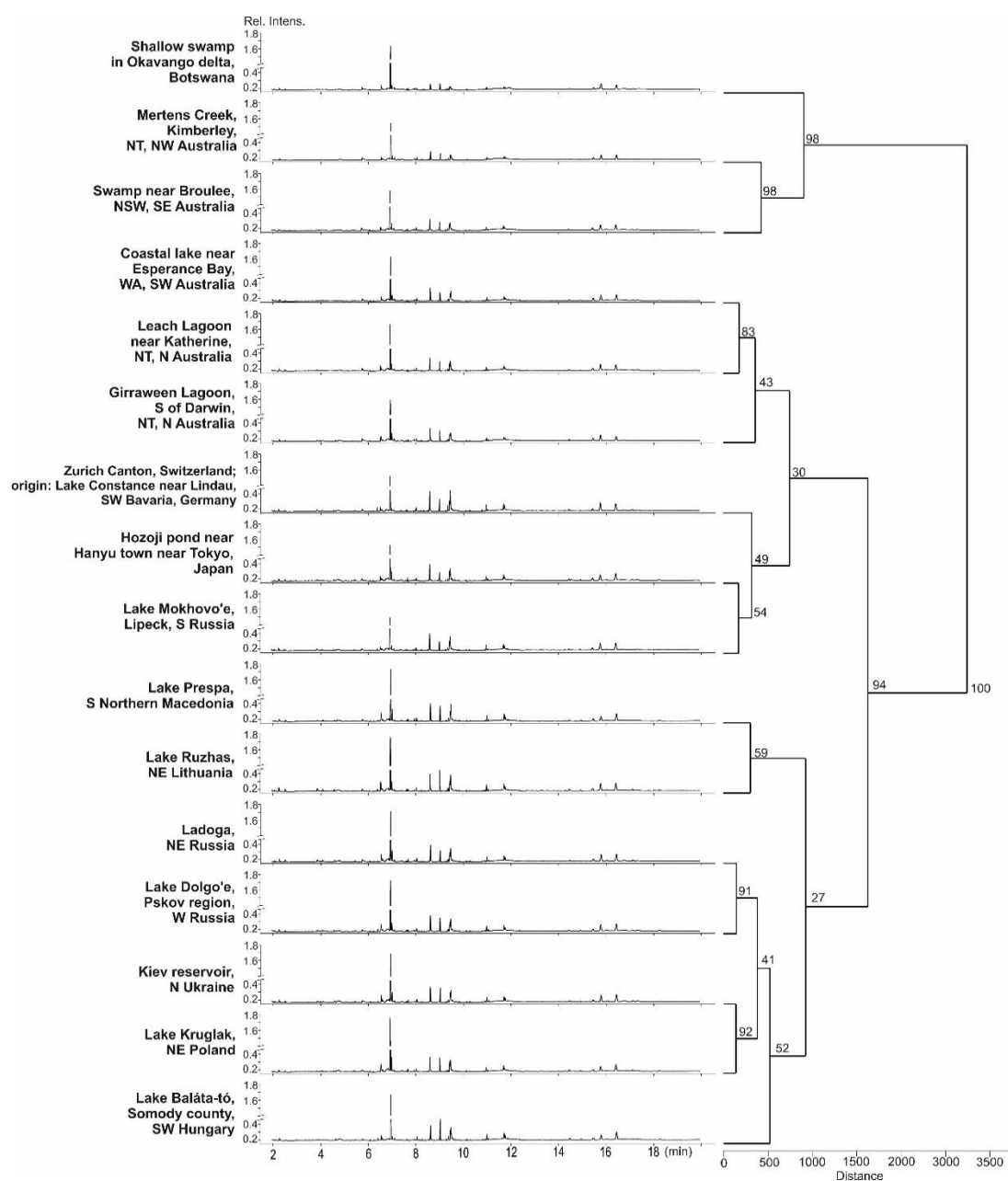


Figure S1. GC-FID chromatographic profiles of *Aldrovanda vesiculosa* populations. On the right, hierarchical clustering dendrograms with bootstrap values based on the Euclidean distances with the Ward's method are shown.