

Supplementary Materials

A

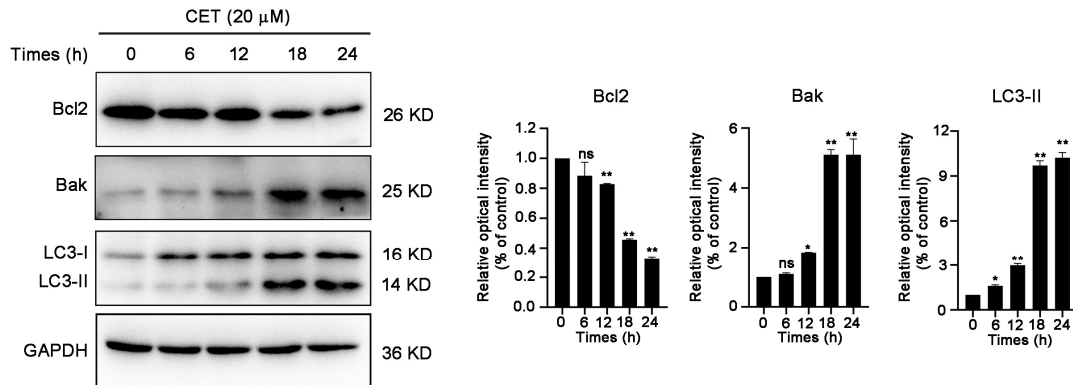
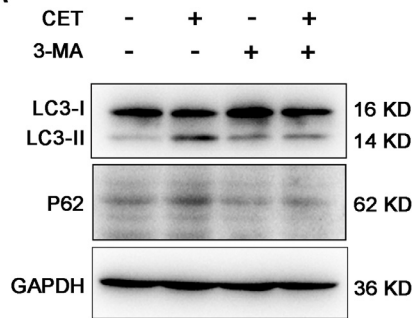


Figure 1. The expression levels of Bcl2, Bak and LC3-II were determined by Western blot. HL-60 cells were treated with 20 μ M CET for indicated time. Data are presented as the mean \pm SD. * p < 0.05 and ** p < 0.01 versus control group.

A



B

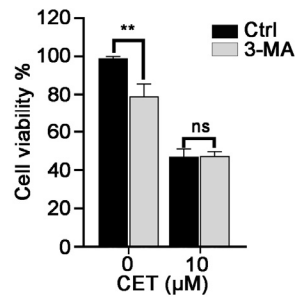


Figure 2. (A) In the absence or existence of 3-MA (2 mM), HL-60 cells were treated with CET (10 μ M) for 24 h. LC3-II and p62 was measured by Western blotting. (B) Cell viability was determined by the CCK-8 assay. ** p < 0.01.

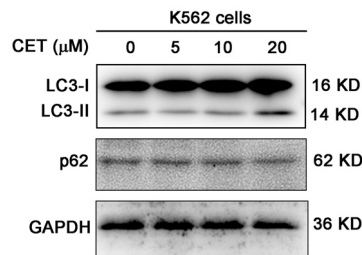
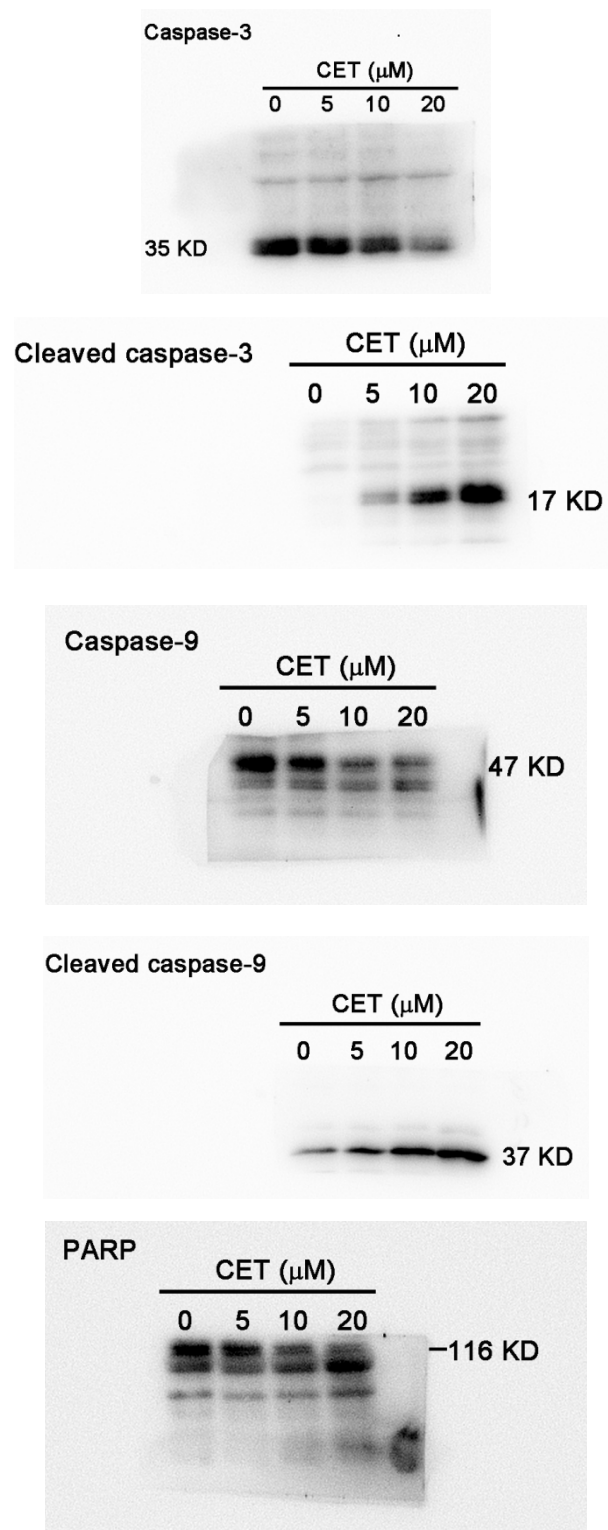


Figure 3. The expression levels of LC3-II and p62 were determined by Western blot. K562 cells were treated with CET treatment (5, 10, 20 μ M) for 24 h.

Original Images for Western Blot's

Figure 2C



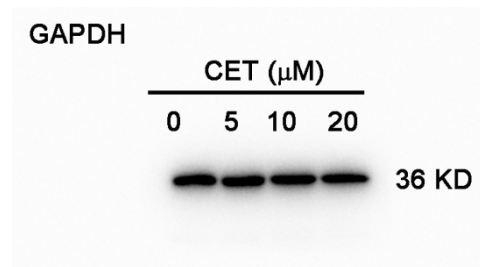
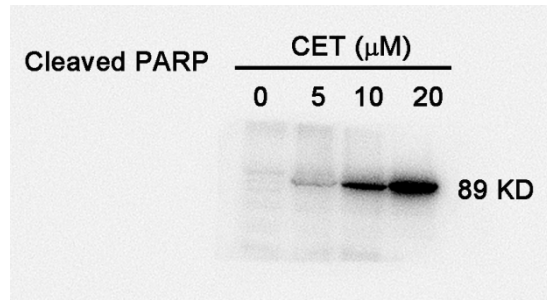
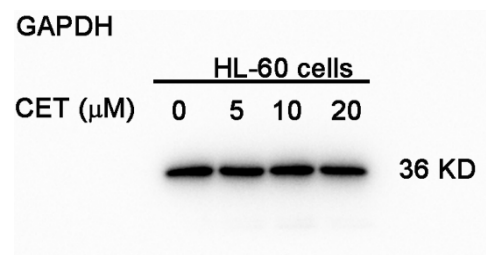
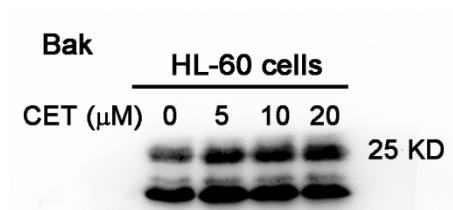
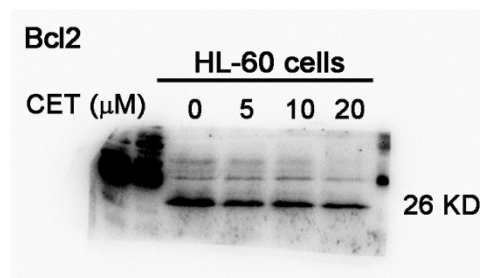


Figure 2D



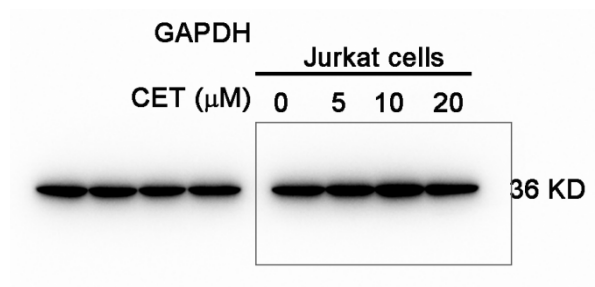
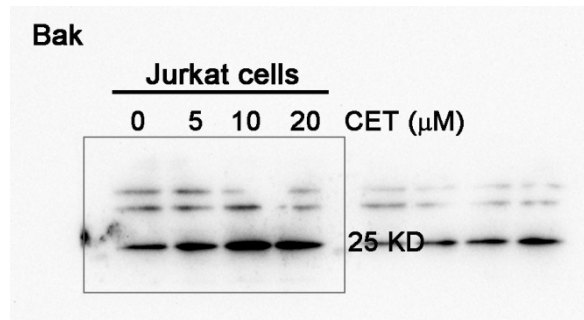
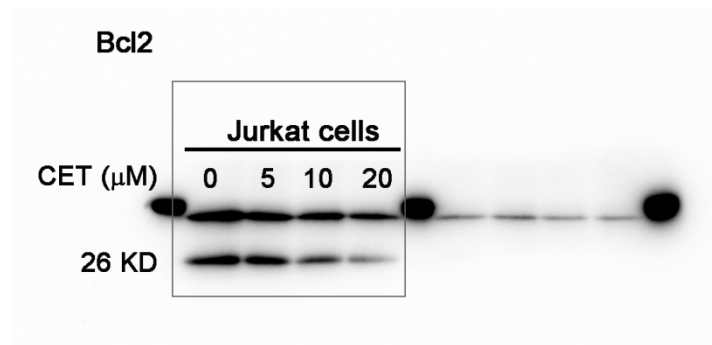
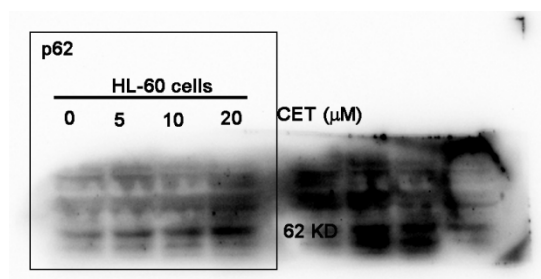
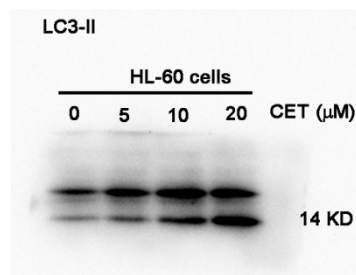


Figure 4E



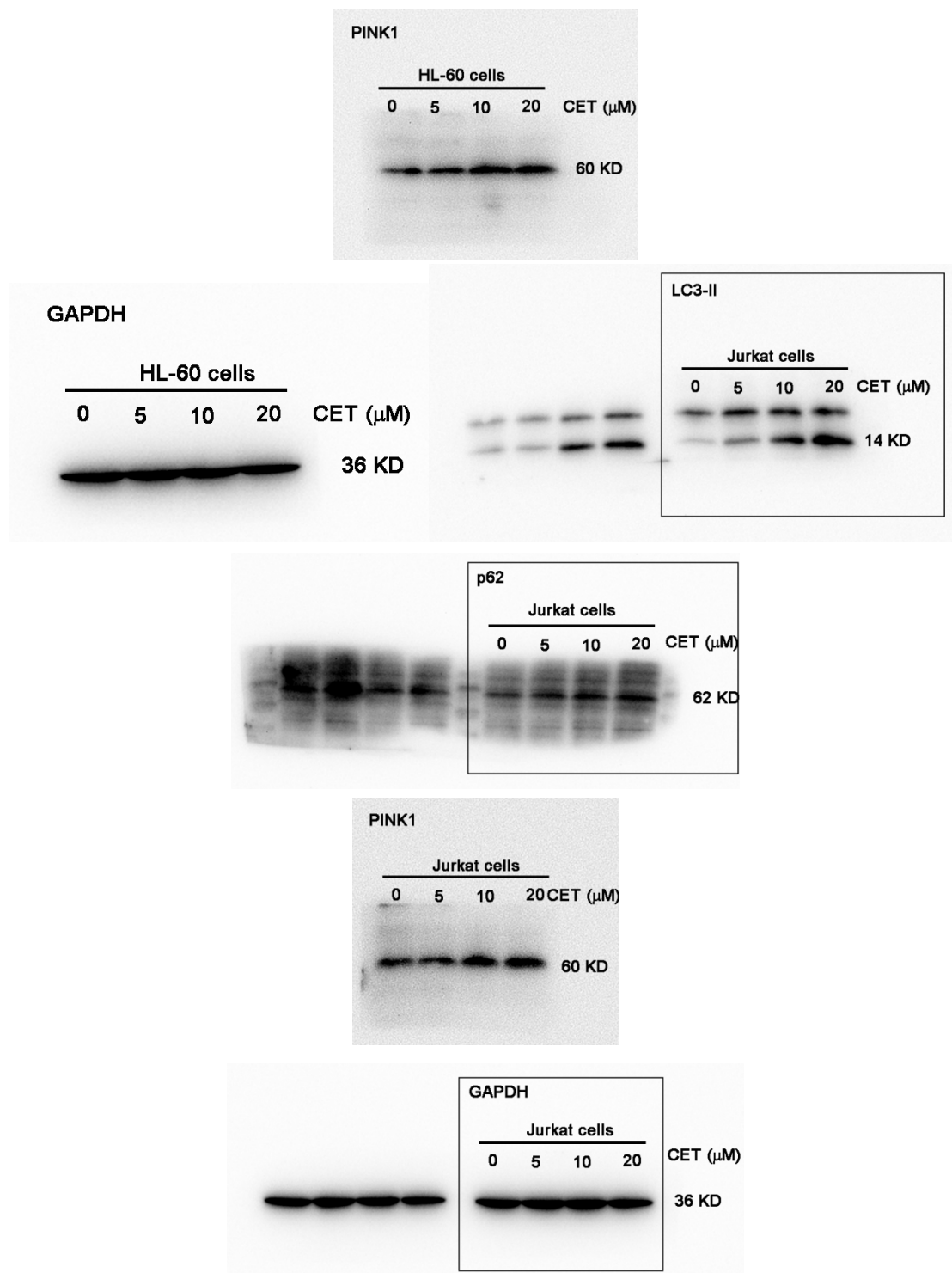


Figure 5A

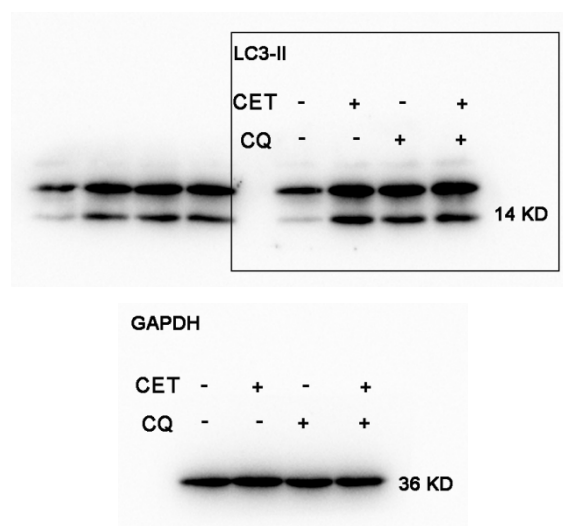


Figure 5B

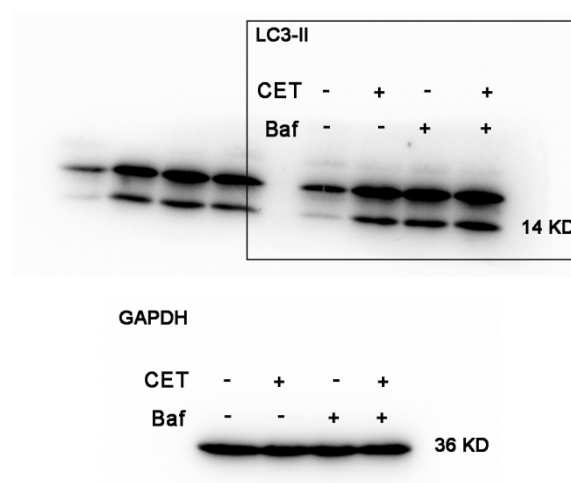
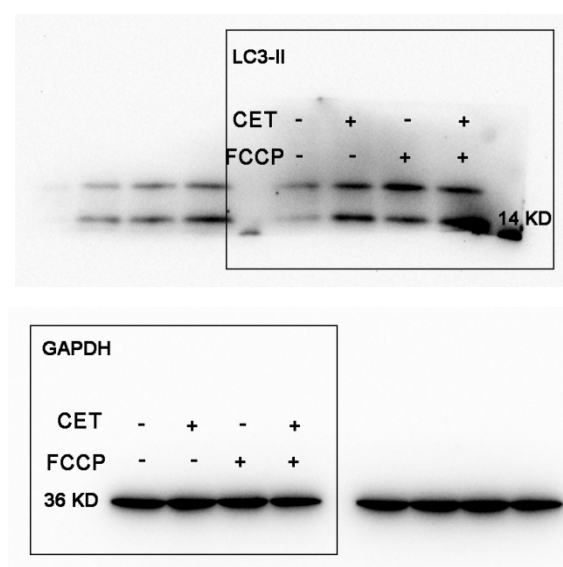


Figure 5C



Supplementary materials

Figure S1

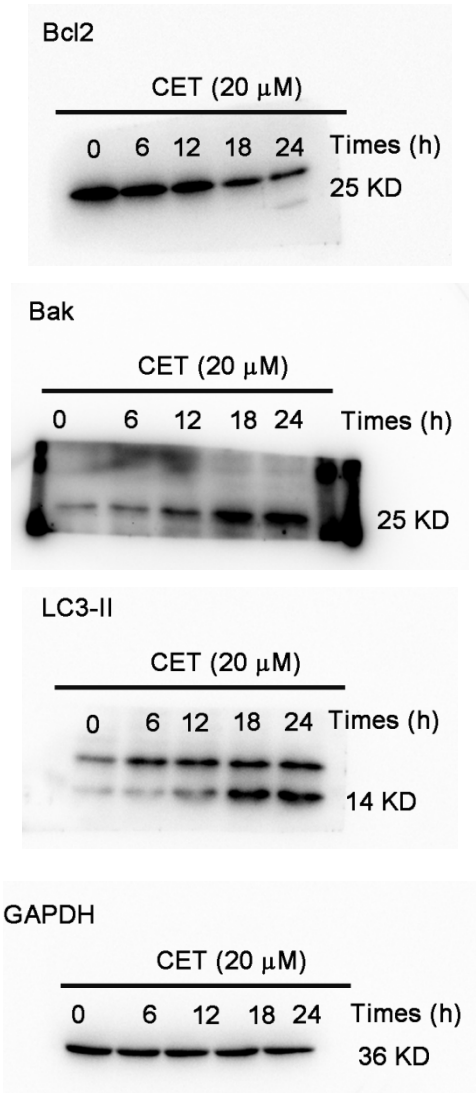
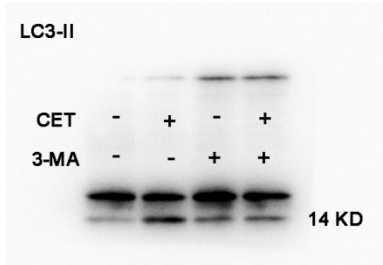


Figure S2



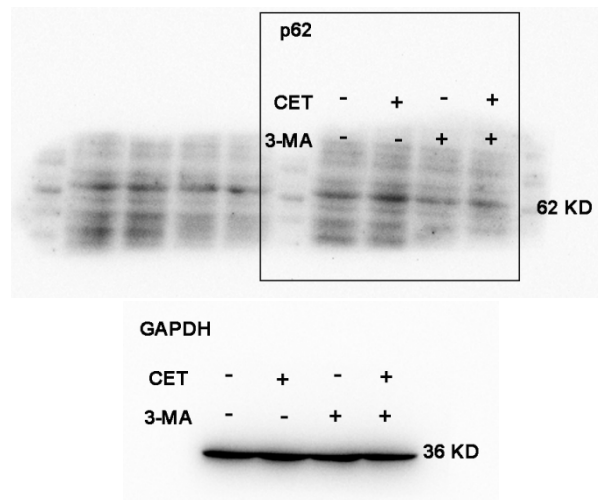


Figure S3

