

Supplemental materials

Berberine inhibits dengue virus through dual mechanisms

Thippayawan Ratanakomol¹, Sittiruk Roytrakul², Nitwara Wikan^{1*}, Duncan R. Smith^{1*}

¹ Institute of Molecular Biosciences, Mahidol University, Salaya, 73170, Thailand; thippayawan.raa@student.mahidol.ac.th (T.R.); nitwara.wik@mahidol.ac.th (N.W.); duncan_r_smith@hotmail.com (D.R.S.)

² National Center for Genetic Engineering and Biotechnology (BIOTEC), National Science and Technology Development Agency, Pathum Thani, 12120, Thailand; (sittiruk@biotec.or.th)

* Correspondence: duncan_r_smith@hotmail.com or nitwara.wik@mahidol.ac.th; Tel.: +66-2800-3624-8

Supplemental Figure S1. Chemical structure of berberine.

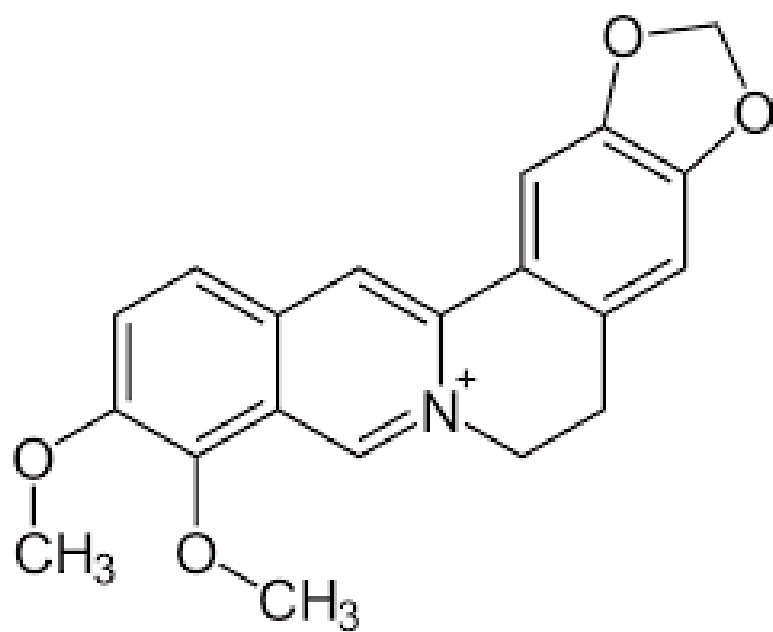
Supplement Figure S2. Cytotoxicity of BBR towards several cell lines.

Supplement Figure S3. BHK-21 morphology after BBR treatment.

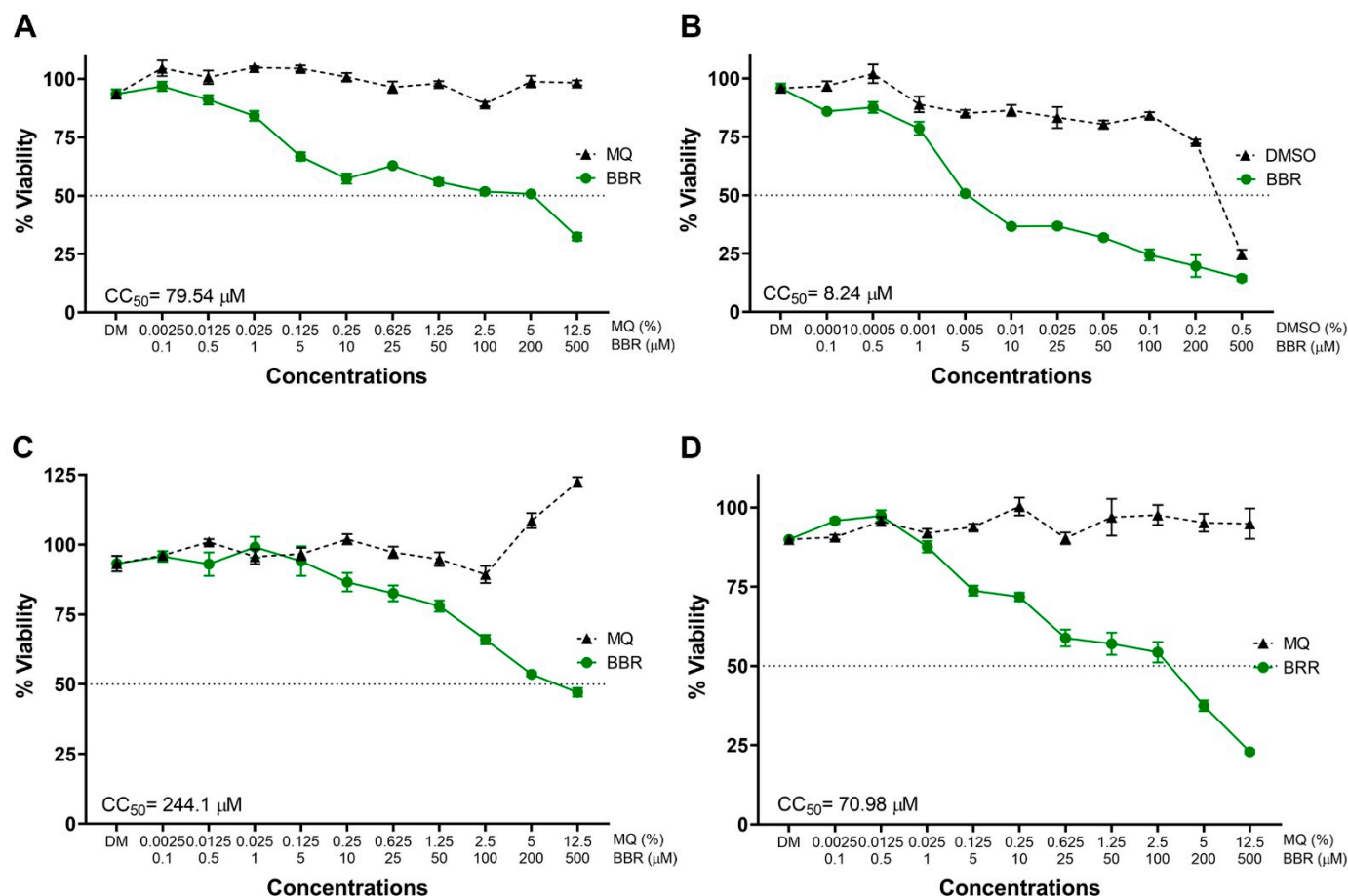
Supplemental Figure S4. Optimization of DENV infection.

Supplemental Figure S5. EC₅₀ calculation of BBR in DENV infection.

Uncropped western blots

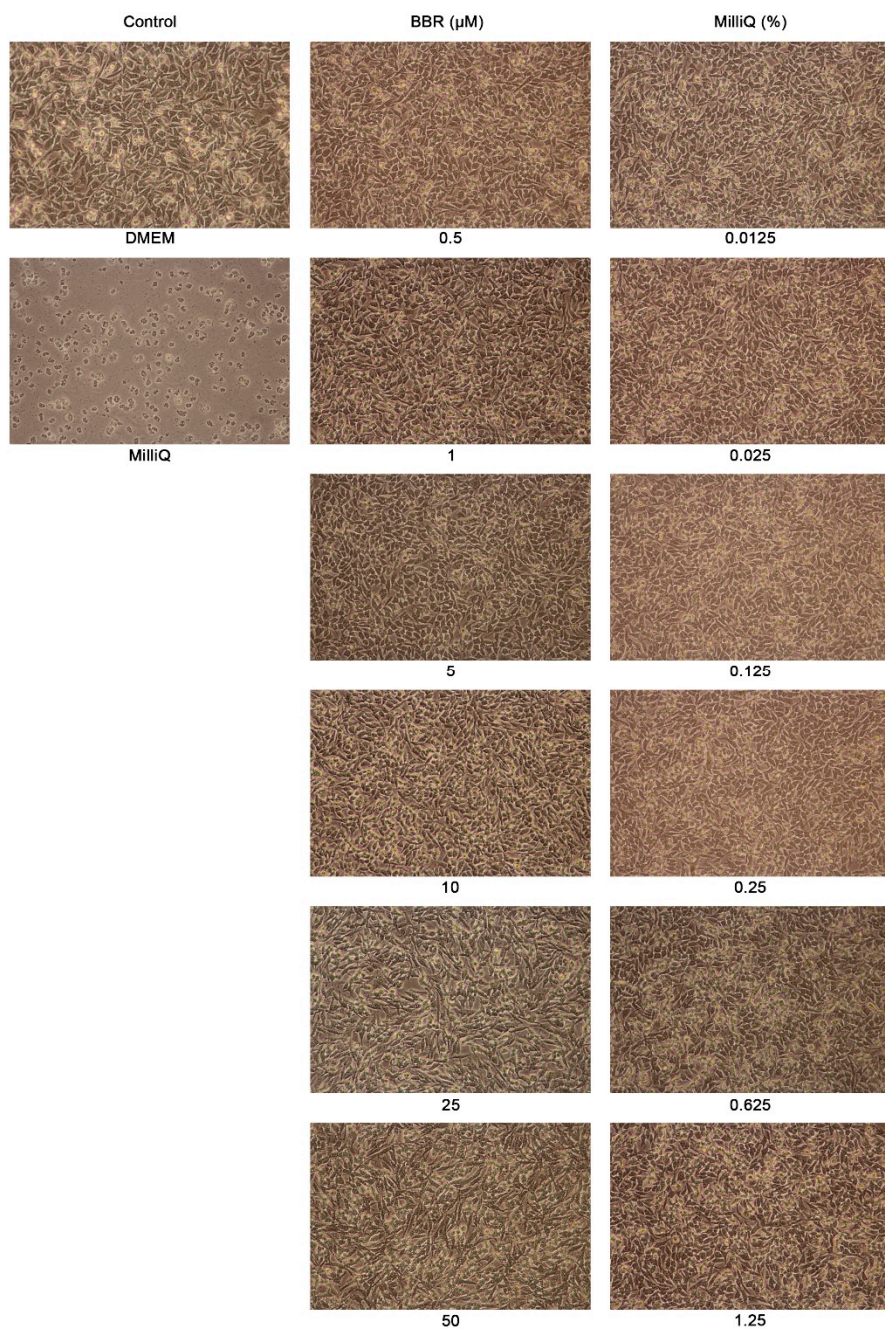


Supplemental Figure S1. Chemical structure of berberine.



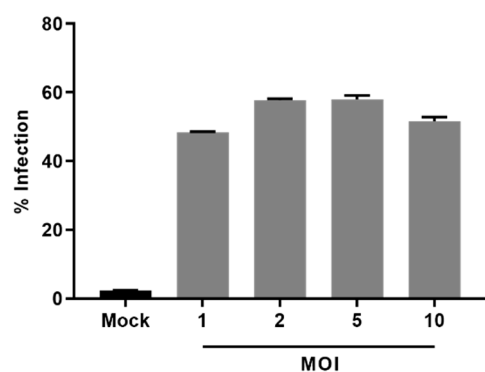
Supplemental Figure S2. Cytotoxicity of BBR towards several cell lines.

(A) A549, (B) HEK293T/17, (C) HepG2 and (D) Huh-7 cells were cultured in 96 well plates before being treated with different concentration of BBR or equivalent volume of MQ water in DMEM for 24 h before cell viability was determined by the MTT assay. Experiment was undertaken as 4 independent replicates. Errors bars show \pm S.E.M. * $p < 0.0001$.

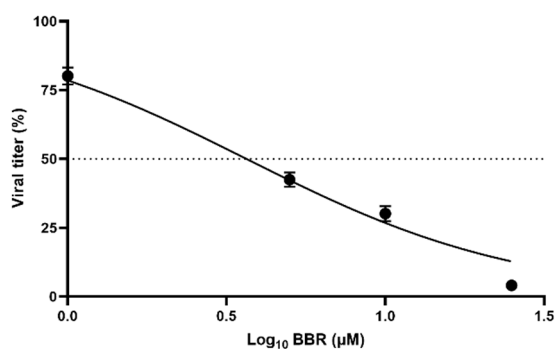


Supplemental Figure S3. BHK-21 morphology after BBR treatment.

BHK-21 cells were treated with BBR at concentrations ranging from 0.1 μM – 50 μM or an equivalent volume vehicle for 24 h before observation of cell morphology under an inverting microscope.



Supplemental Figure S4. Optimization of DENV infection. BHK-21 cells were infected with DENV 2 at different MOI, and after 24 h, level of infection was determined by flow cytometry.

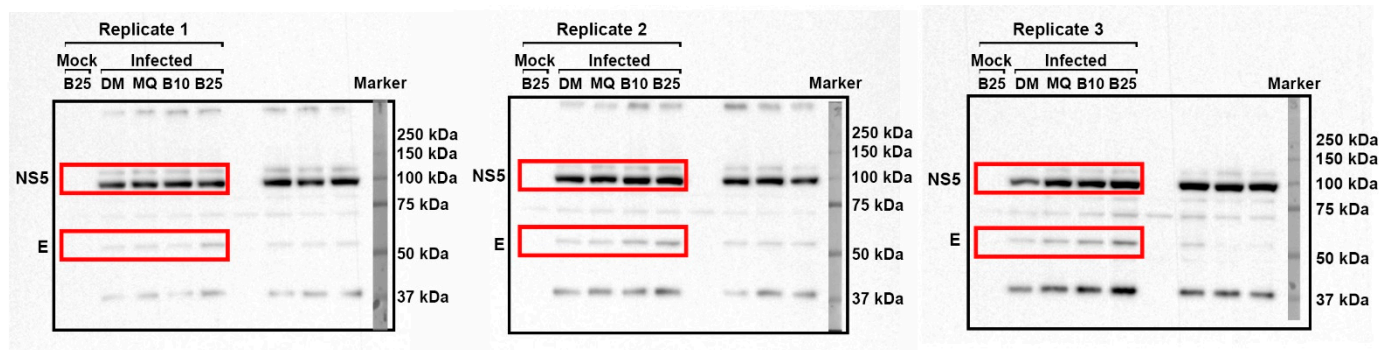


Supplemental Figure S5. EC₅₀ calculation of BBR in DENV infection.

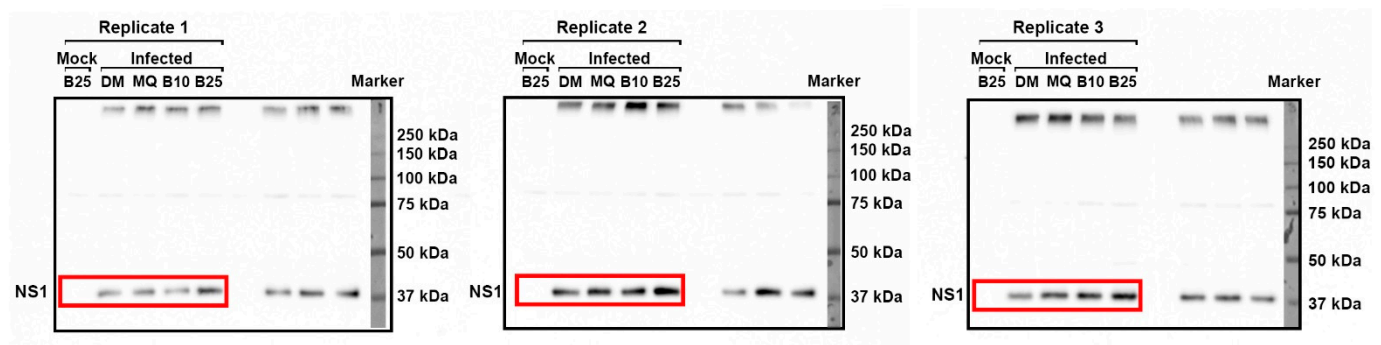
Virus titer data from Figure 2E was used to calculate the EC₅₀ of BBR towards DENV under conditions of post treatment.

Uncropped western blots

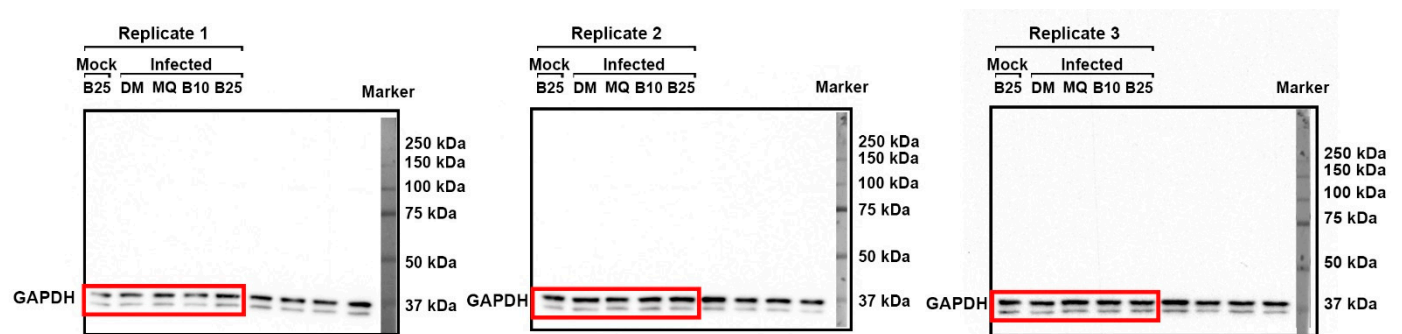
Western blot of viral protein expression at 24 hours post- treatment



Full western blot membranes of NS5 and E proteins captured by Azure400 (Replicate 1-3 left-right), red boxes indicate bands presented in Fig 3D; NS5 and E proteins.

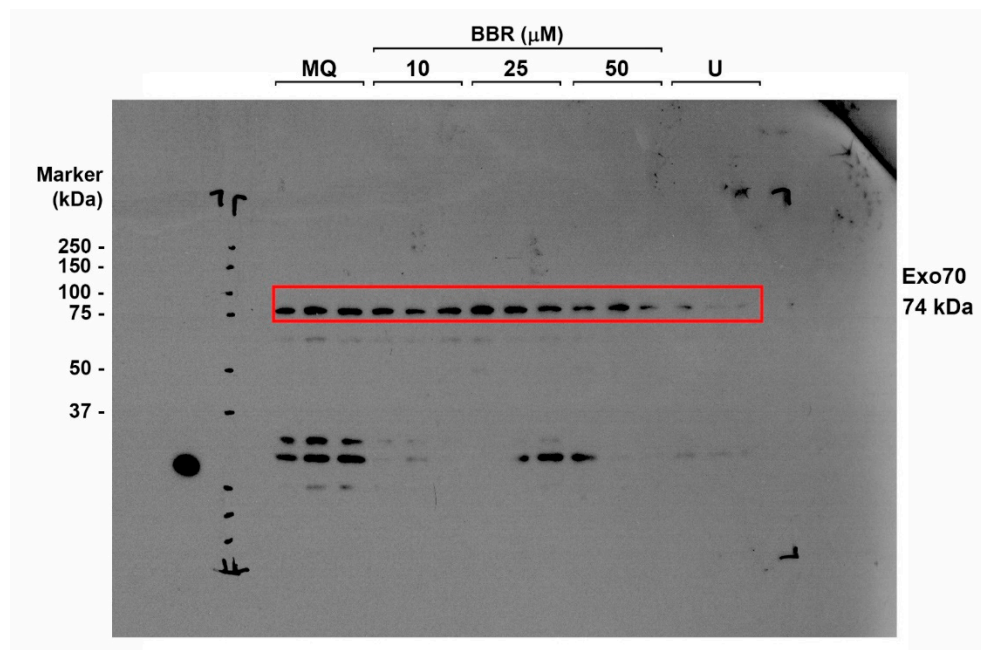


Full western blot membranes of NS1 protein captured by Azure400 (Rep 1-3 left-right), red boxes indicate bands presented in Fig 3D; NS1 protein.

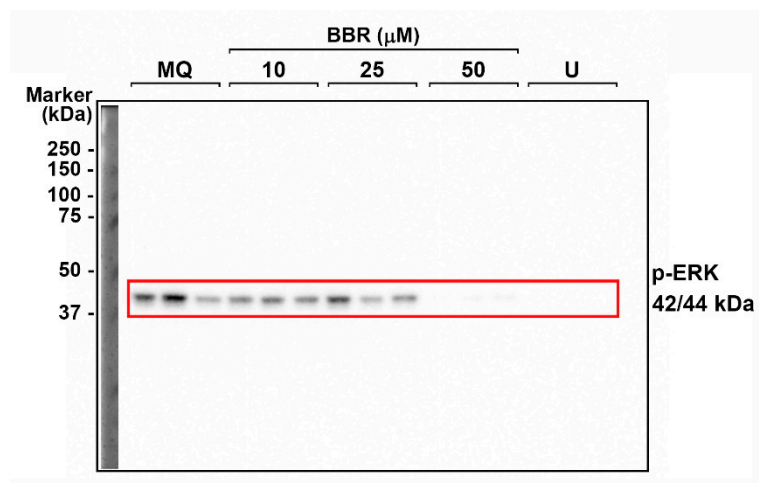


Full western blot membranes of GAPDH captured by Azure400 (Rep 1-3 left to right), red boxes indicate bands presented in Fig 3D; GAPDH.

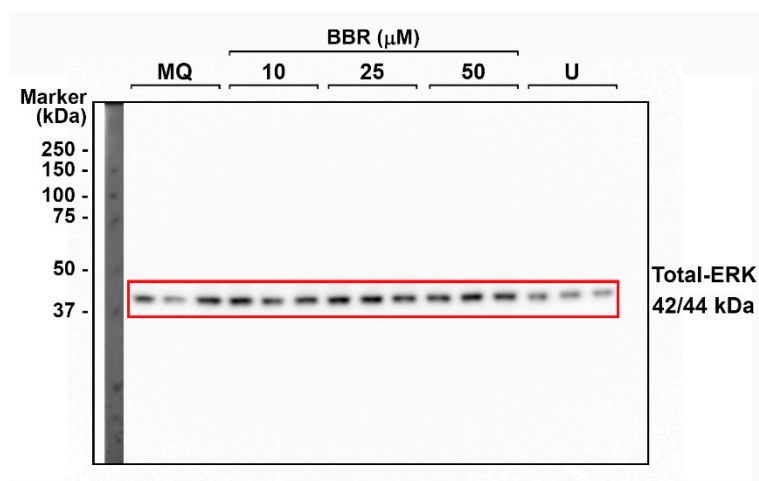
Western blot of BBR effect on Erk1/2 and Exo70



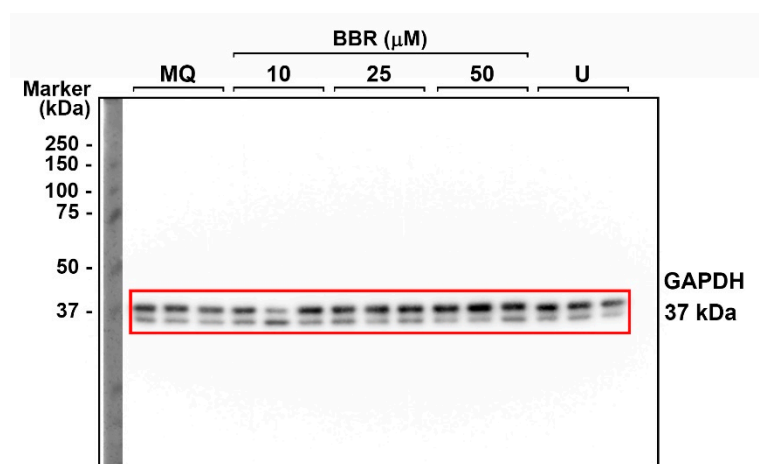
Full western blot membrane of Exo70 captured on X-ray film (Rep 1-3 were in consecutive lane), red box indicates bands presented on Fig 4A; Exo70.



Full western blot membrane of p-ERK captured by Azure400 (Rep 1-3 were in consecutive lane), red boxes indicate bands presented in Fig 4A; p-ERK.



Full western blot membrane of total ERK captured by Azure400 (Rep 1-3 were in consecutive lane), red box indicates bands presented in Fig 4A; Total ERK.

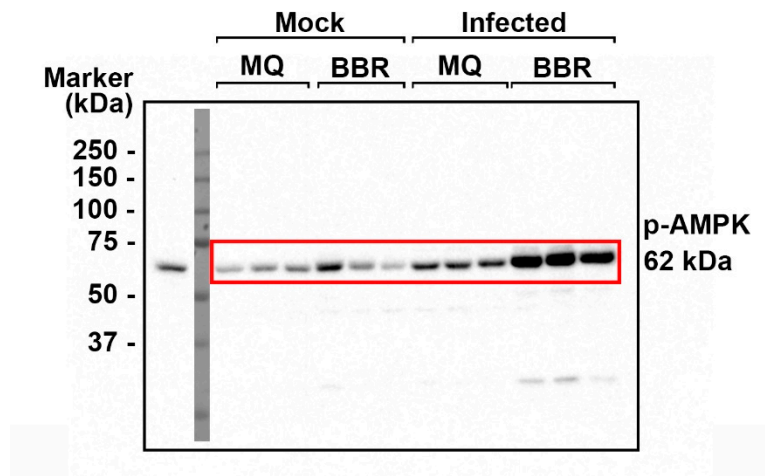


Full western blot membrane of GAPDH captured by Azure400 (Rep 1-3 were in consecutive lane), red box indicates bands presented in Fig 4A; GAPDH

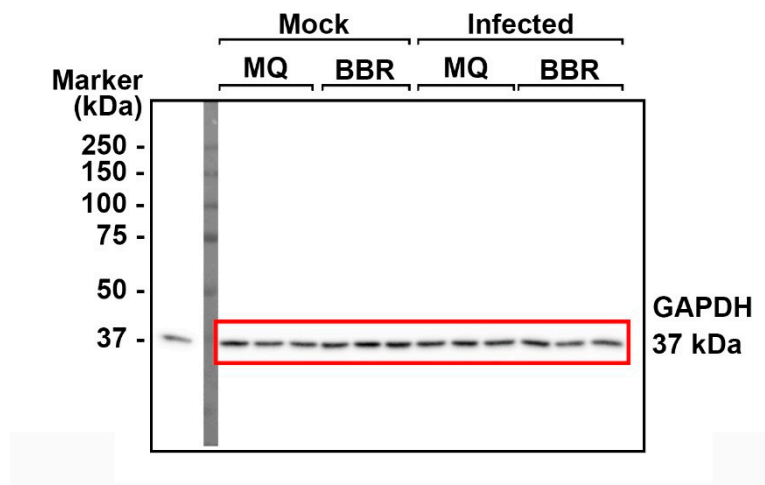
Western blot of BBR effect on lipid droplets and AMPK

Note: Lane 15 left empty

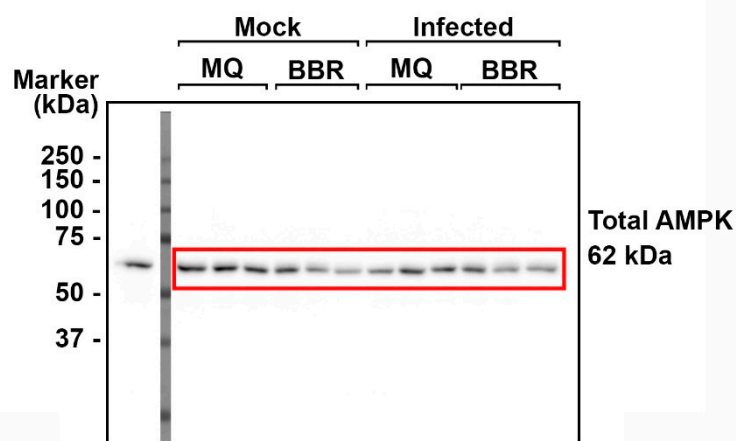
p-AMPK and AMPK were performed on different membranes



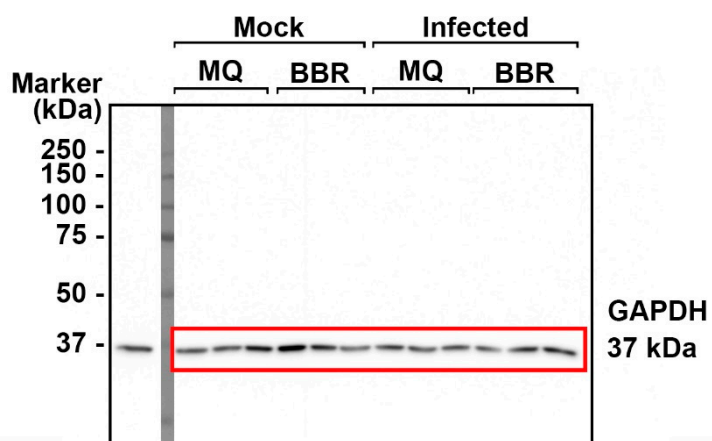
Full western blot membrane of p-AMPK captured by Azure400 (Rep 1-3 were in consecutive lane), red box indicates bands presented in Fig 5C; p- AMPK.



Full western blot membrane of GAPDH (from phospho- membrane) captured by Azure400 (Rep 1-3 were in consecutive lane), red box indicates bands presented in Fig 5C; GAPDH for p-AMPK.



Full western blot membrane of total AMPK captured by Azure400 (Rep 1-3 were in consecutive lane), red box indicates bands presented in Fig 5C; total AMPK..



Full western blot membrane of GAPDH (total- membrane) captured by Azure400 (Rep 1-3 were in consecutive lane), red box indicates bands presented in Fig 5C; GAPDH for total AMPK.