

Supplementary information

Controversy of Peptide Cyclization from Tripeptide

Chung-Yin Lin ^{1,2,*}, Subrata Chakraborty ³, Chia-Wei Wong ³ and Dar-Fu Tai ^{4,*}

¹ Medical Imaging Research Center, Institute for Radiological Research, Chang Gung University/Chang Gung Memorial Hospital, Taoyuan 333423, Taiwan

² Department of Nephrology and Clinical Poison Center, Chang Gung Memorial Hospital, Taoyuan 333423, Taiwan

³ Department of Chemistry, National Dong Hwa University, Hualien 974003, Taiwan; cpapu2000@yahoo.com (S.C.); linny5782@hotmail.com (C.-W.W.)

⁴ Department of Life Science, National Dong Hwa University, Hualien 974003, Taiwan

* Correspondence: winwood5782@gmail.com (C.-Y.L.); dftai@gms.ndhu.edu.tw (D.-F.T.); Tel.: +886-3-211-8800 (ext.3865) (C.-Y.L.)

Citation: Lin, C.-Y.; Chakraborty, S.; Wong, C.-W.; Tai, D.-F. Controversy of Peptide Cyclization from Tripeptide. *Molecules* **2021**, *26*, 389. <https://doi.org/10.3390/molecules26020389>

Academic Editor: Theodore Tselios

Received: 16 November 2020

Accepted: 5 January 2021

Published: 13 January 2021

Publisher's Note: MDPI stays neutral with regard to jurisdictional claims in published maps and institutional affiliations.



Copyright: © 2021 by the authors.

Licensee MDPI, Basel, Switzerland.

This article is an open access article distributed under the terms and conditions of the Creative Commons Attribution (CC BY) license (<http://creativecommons.org/licenses/by/4.0/>).

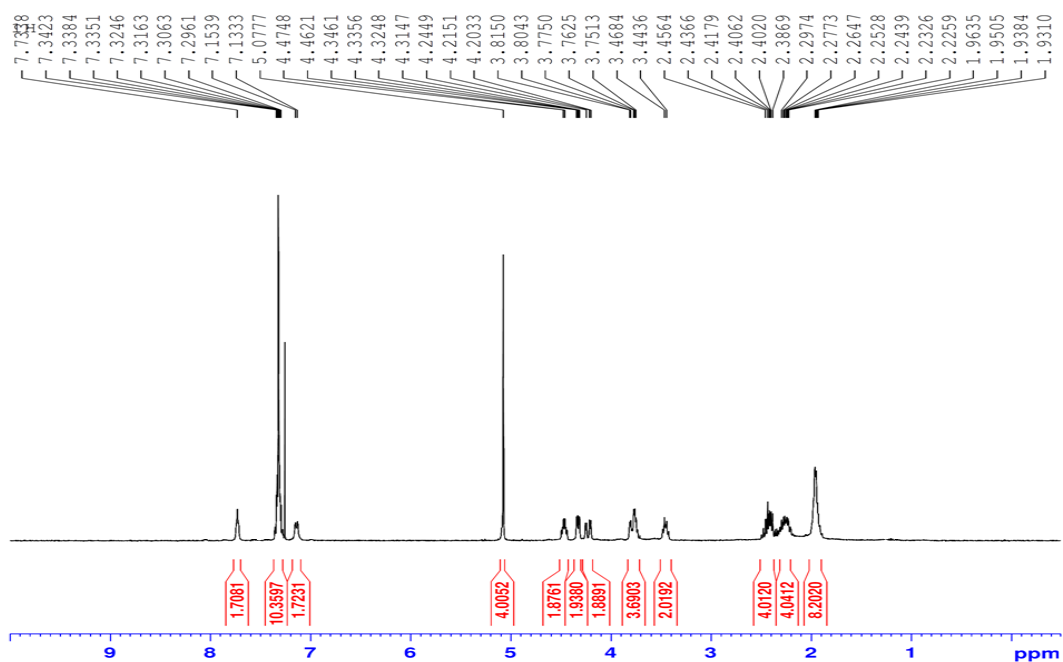


Figure S1. ¹H NMR spectrum of *cyclo*(Gly-L-Pro-L-Glu(OBn))₂ 7 in CDCl₃.

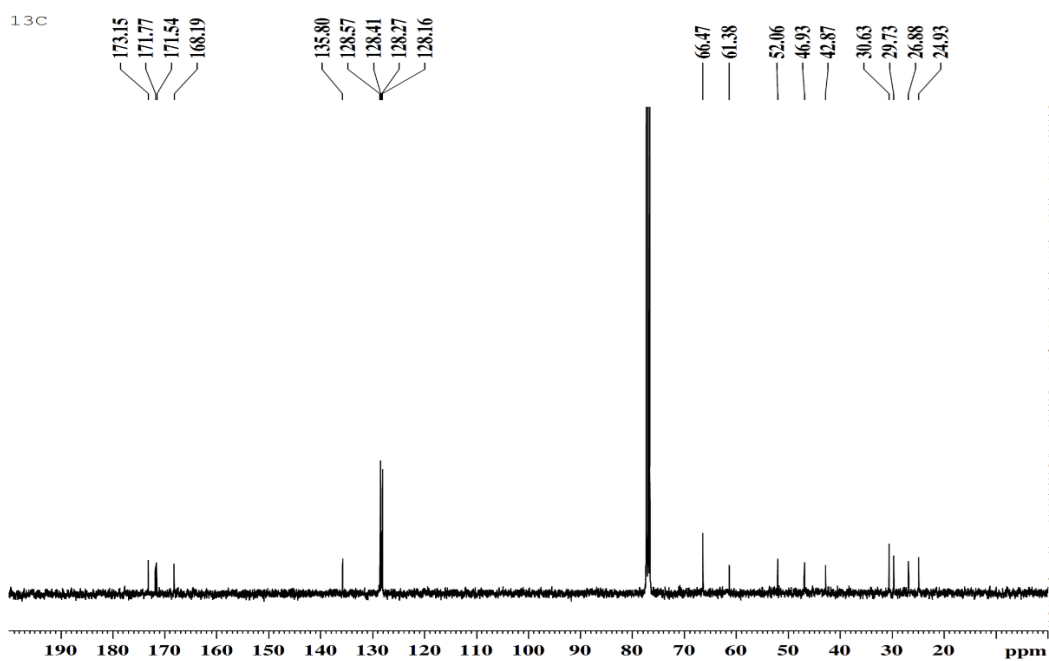


Figure S2. ¹³C NMR spectrum of *cyclo*(Gly-L-Pro-L-Glu(OBn))₂ 7 in CDCl₃.

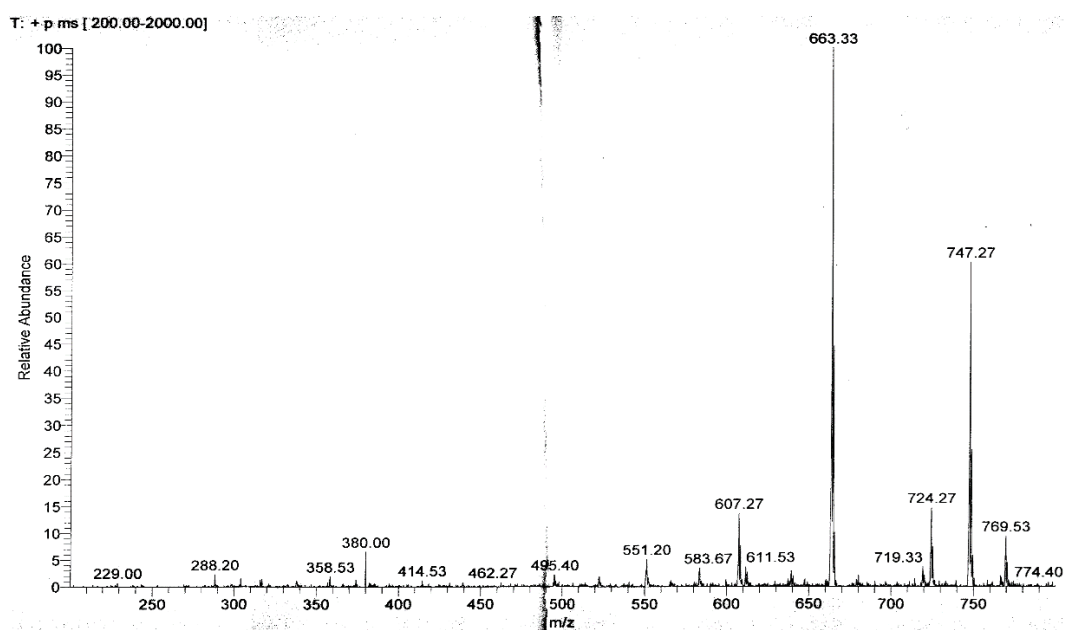


Figure S3. HRMS(ESI) spectrum of *cyclo*(Gly-L-Pro-L-Glu(OBn))₂₇.

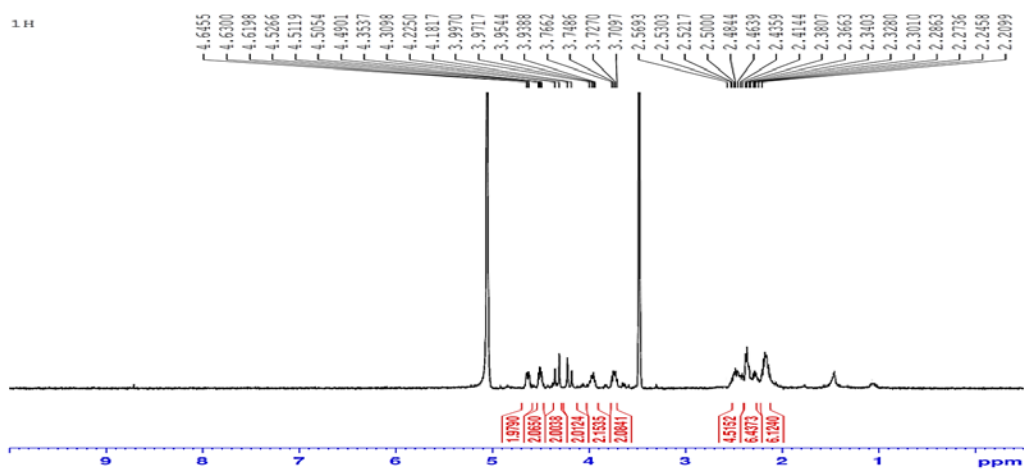


Figure S4. ¹H NMR spectrum of *cyclo*(Gly-L-Pro-L-Glu)₂ in CD₃OD/D₂O.

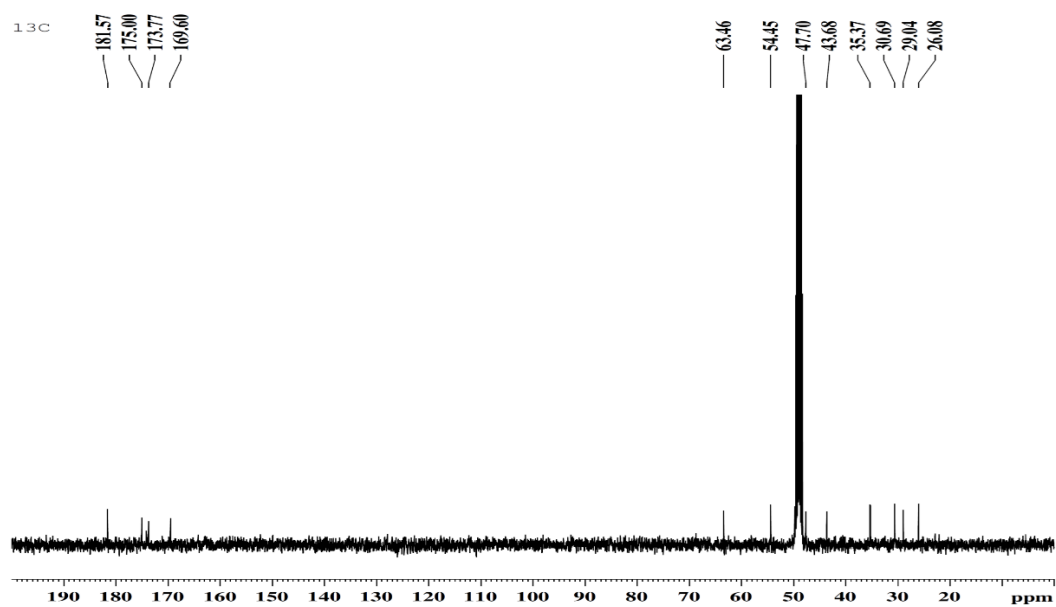


Figure S5. ¹³C NMR spectrum of *cyclo*(Gly-L-Pro-L-Glu)₂ 2 in CD₃OD/D₂O.

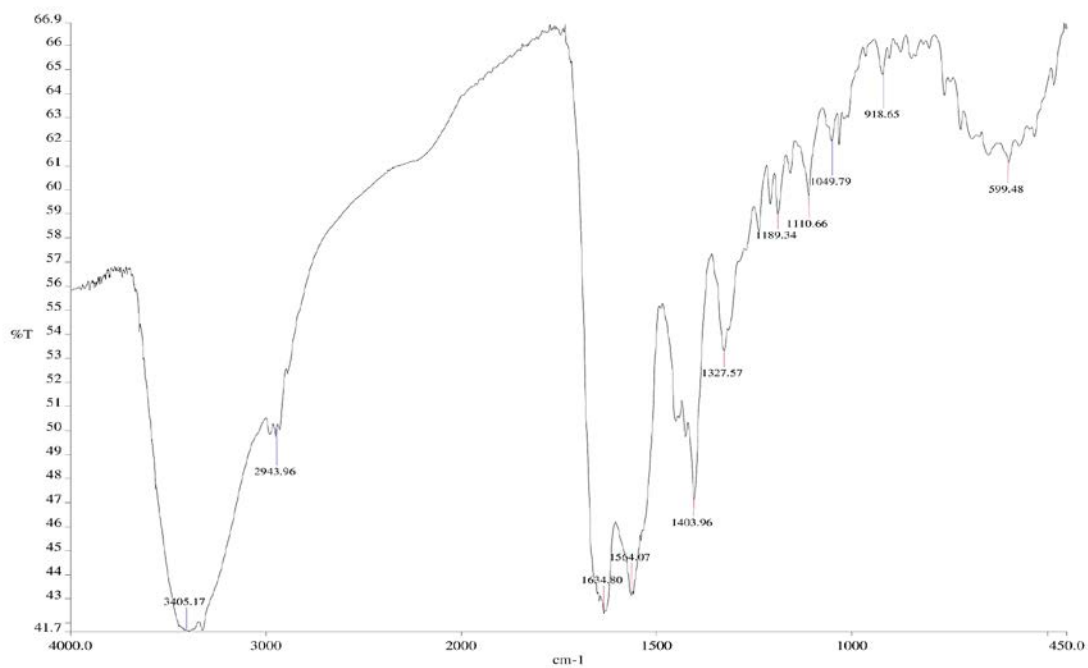


Figure S6. IR spectrum of *cyclo*(Gly-L-Pro-L-Glu)₂ 2.

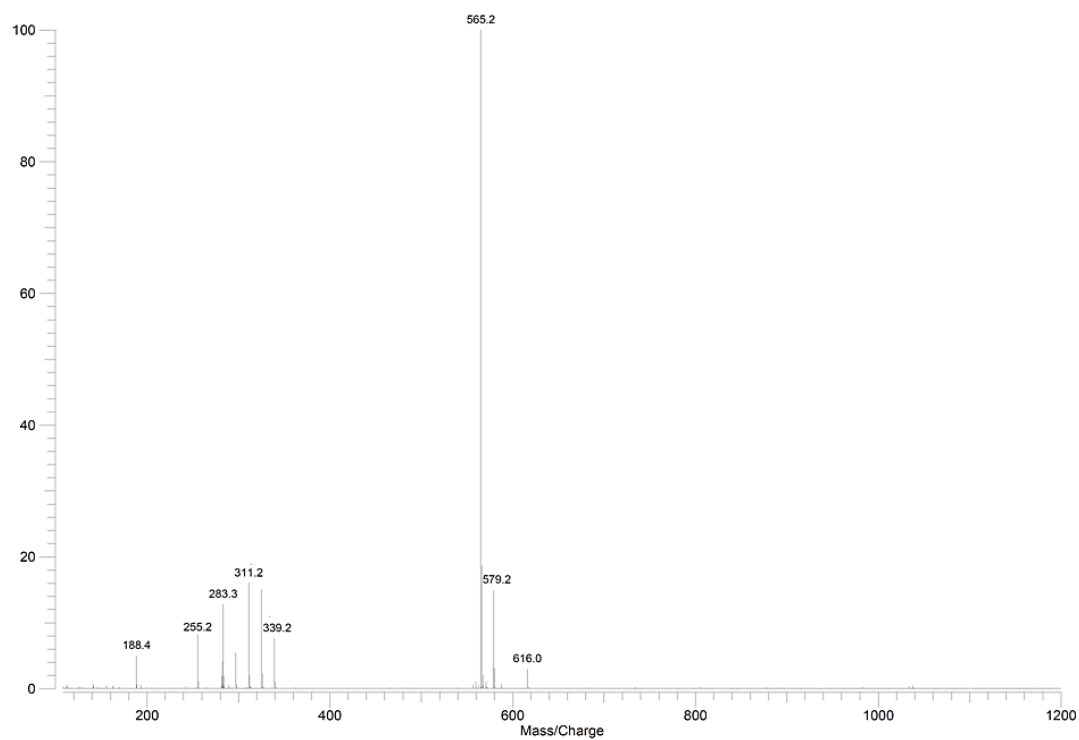


Figure S7. HRMS(ESI) spectrum of *cyclo(Gly-L-Pro-L-Glu):2*.

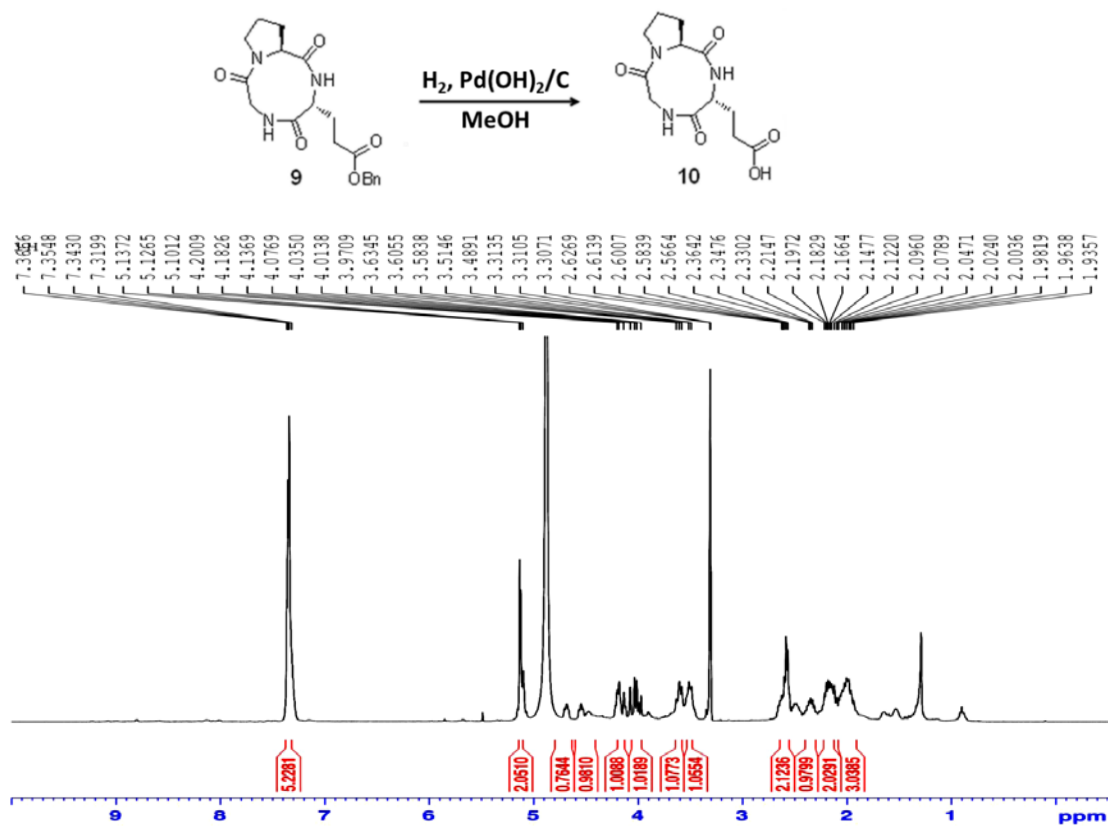


Figure S8. 1H NMR spectrum of *cyclo(Gly-L-Pro-D-Glu(Bn))* 9 in $CDCl_3$.

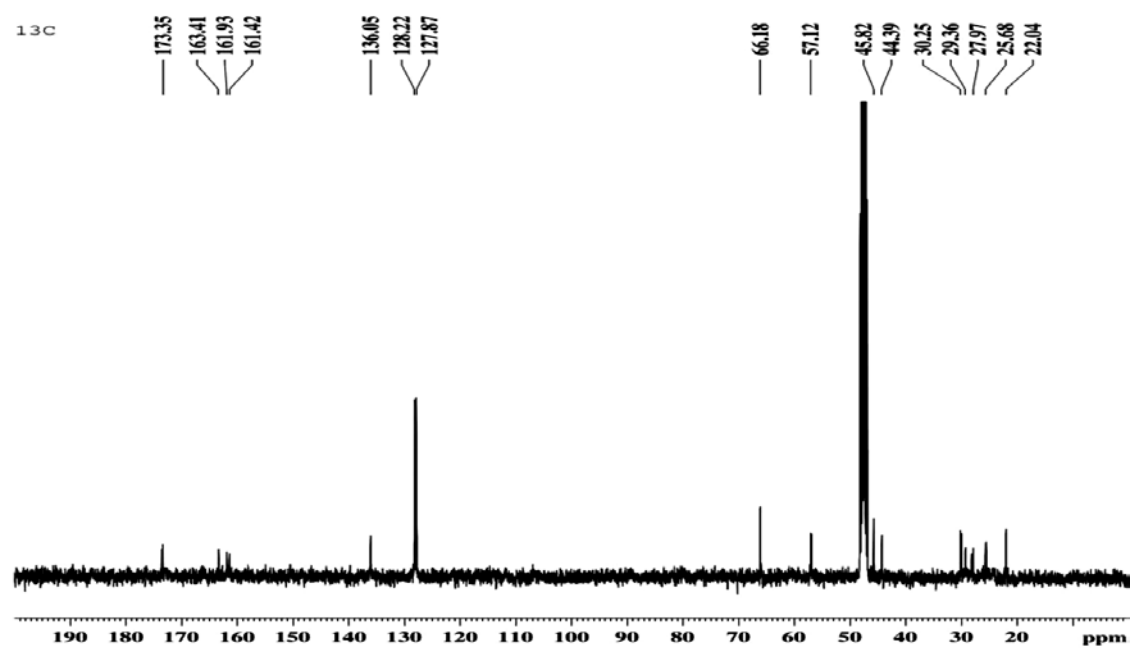


Figure S9. ¹³C NMR spectrum of *cyclo*(Gly-L-Pro-D-Glu(Bn)) 9 in CDCl₃.

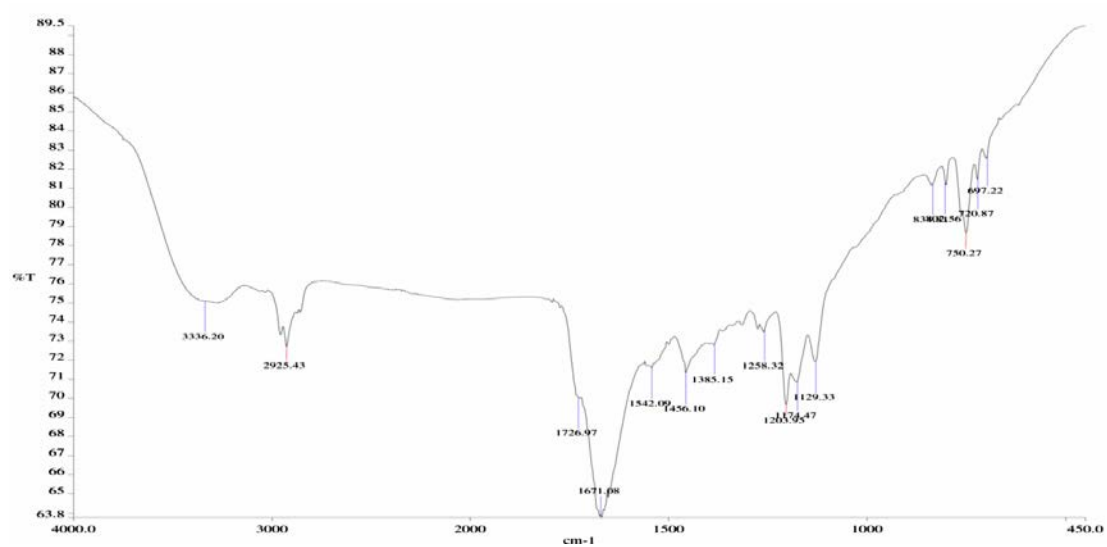


Figure S10. IR spectrum of *cyclo*(Gly-L-Pro-D-Glu(Bn)) 9.

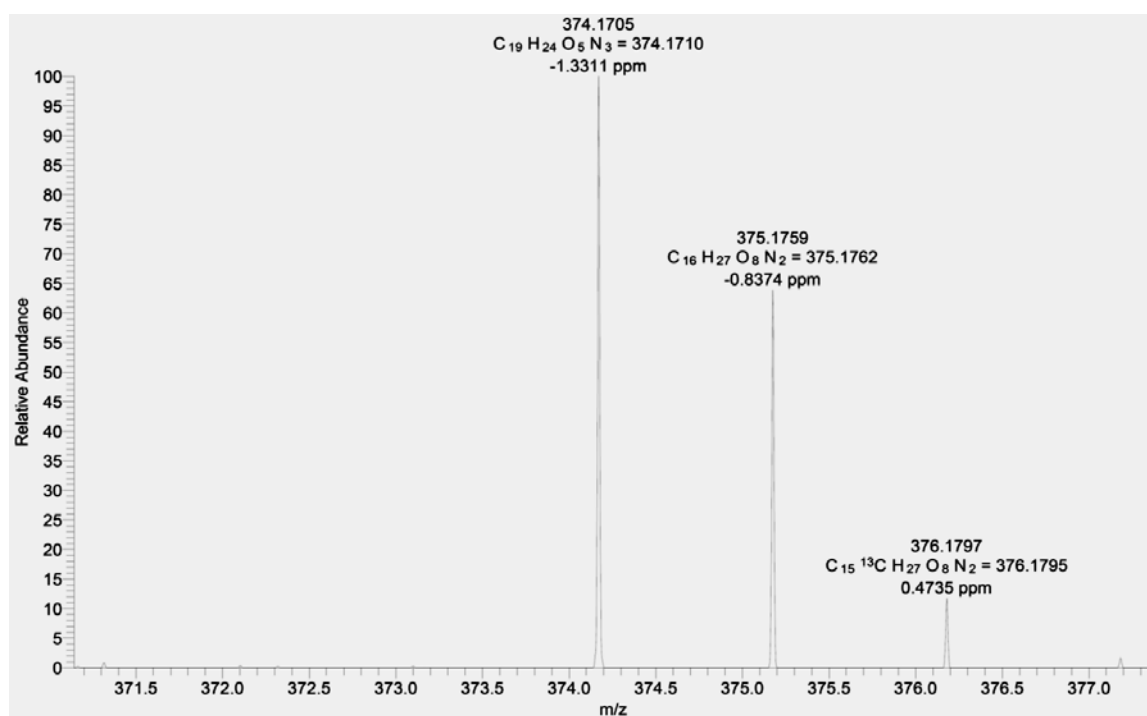


Figure S11. HRMS(ESI) spectrum of *cyclo*(Gly-L-Pro-D-Glu(Bn)) 9.

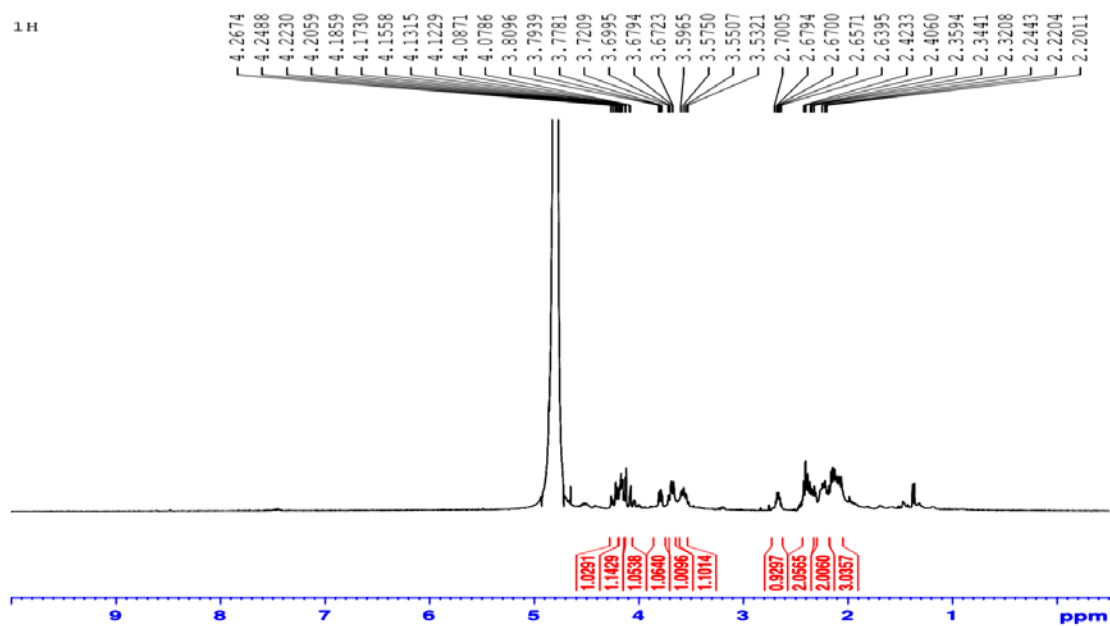


Figure S12. ¹H NMR spectrum of *cyclo*(Gly-L-Pro-D-Glu) 10 in D₂O.

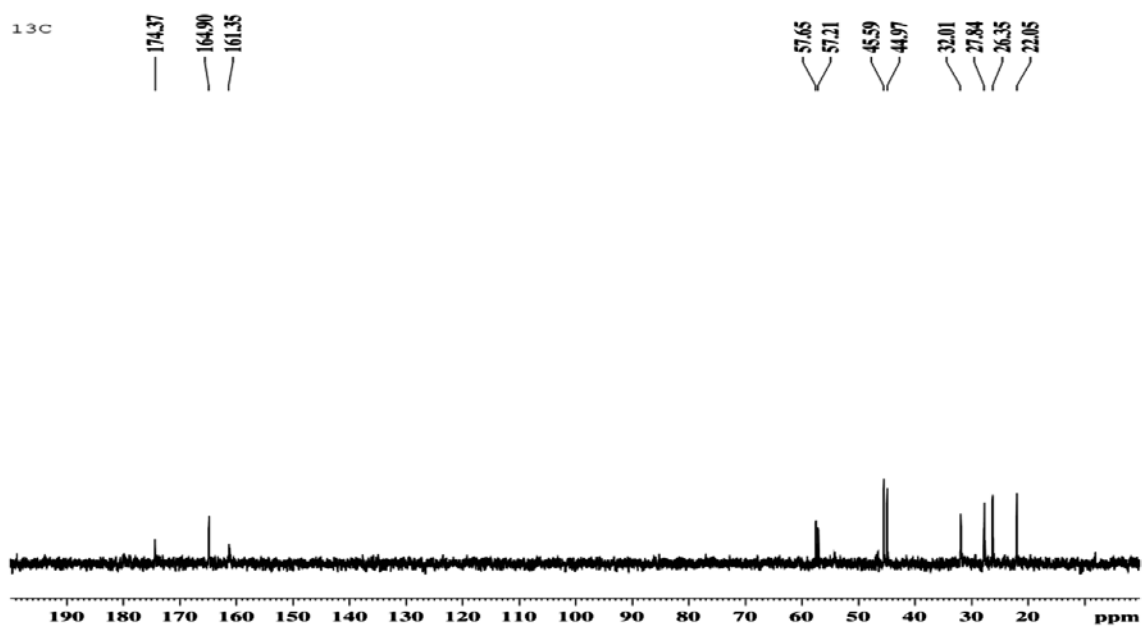


Figure S13. ¹³C NMR spectrum of *cyclo*(Gly-L-Pro-D-Glu) 10 in D₂O.

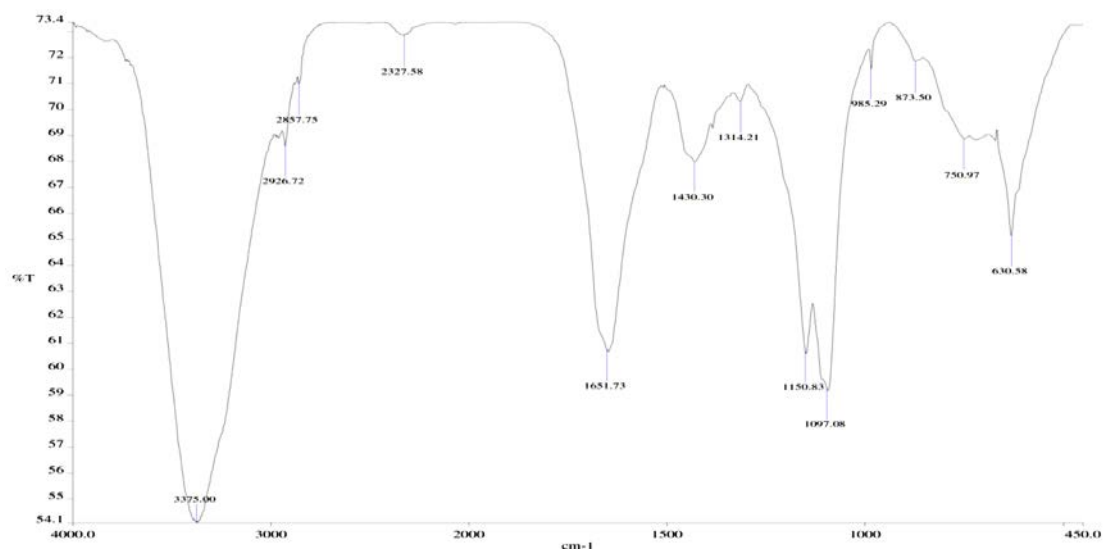


Figure S14. IR spectrum of *cyclo*(Gly-L-Pro-D-Glu) 10.

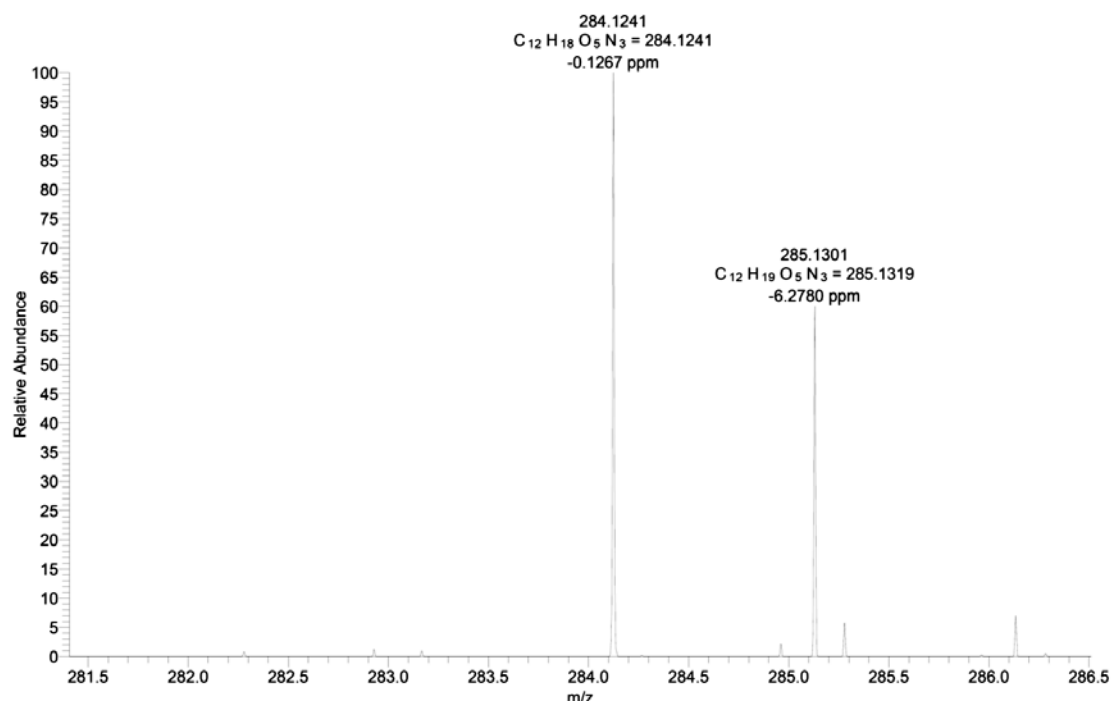


Figure S15. HRMS(ESI) spectrum of *cyclo*(Gly-L-Pro-D-Glu) 10.