

## Supplementary Materials

# *Linnaea borealis* L. var. *borealis*—In Vitro Cultures and Phytochemical Screening as a Dual Strategy for Its Ex Situ Conservation and a Source of Bioactive Compounds of the Rare Species

Barbara Thiem <sup>1</sup>, Dariusz Kruszka <sup>2</sup>, Natalia Turowska <sup>1</sup>, Elwira Sliwinska <sup>3</sup>, Viktor Berge <sup>4</sup> and Małgorzata Kikowska <sup>1,\*</sup>

<sup>1</sup> Department of Pharmaceutical Botany and Plant Biotechnology, Poznan University of Medical Sciences, 14 Św. Marii Magdaleny, 61-861 Poznań, Poland

<sup>2</sup> Institute of Plant Genetics, Polish Academy of Sciences, 34 Strzeszyńska St., 60-479 Poznań, Poland

<sup>3</sup> Laboratory of Molecular Biology and Cytometry, Department of Agricultural Biotechnology, Bydgoszcz University of Science and Technology, 7 Prof. Kaliskiego Ave., 85-789 Bydgoszcz, Poland

<sup>4</sup> Institute of Clinical Medicine, University of Oslo, Trondheimsveien 235, 0586 Oslo, Norway

\* Correspondence: kikowska@ump.edu.pl; Tel: +48-61-6687851

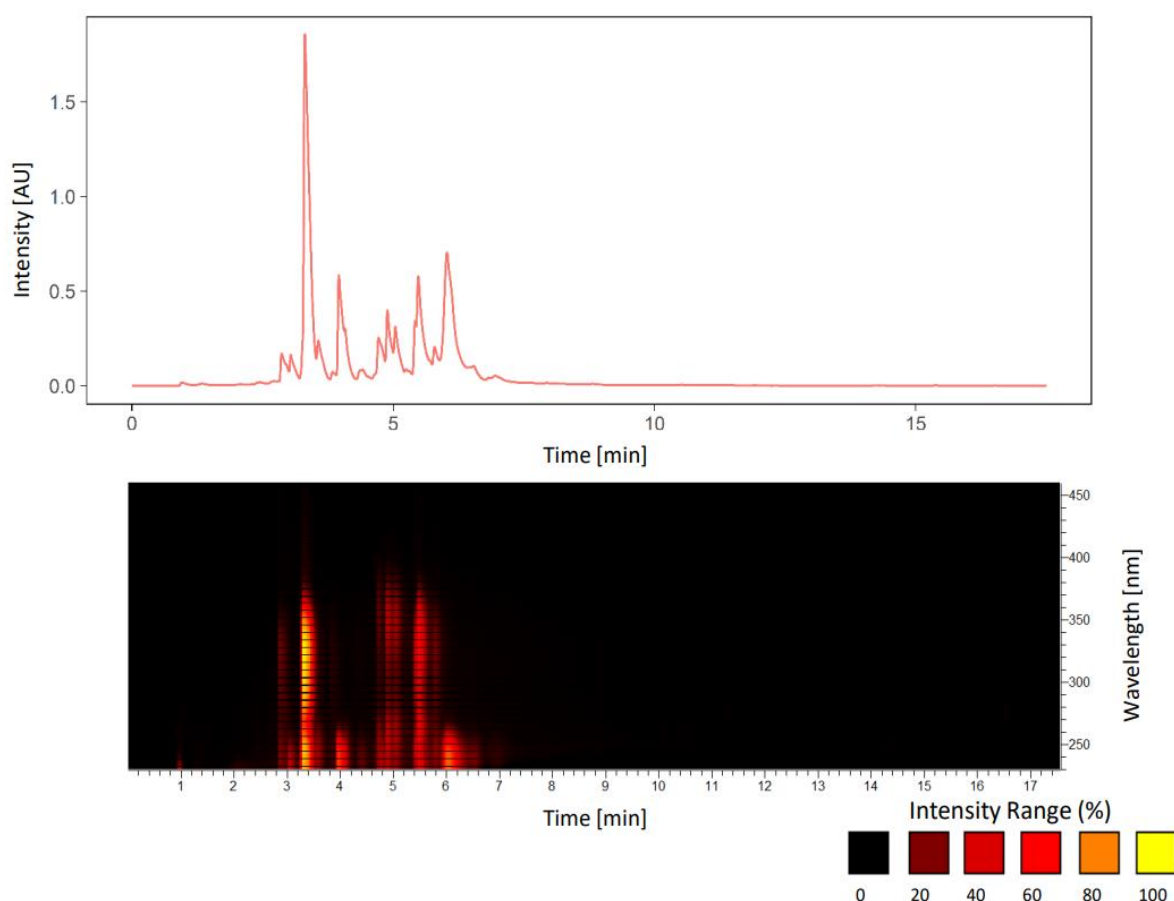
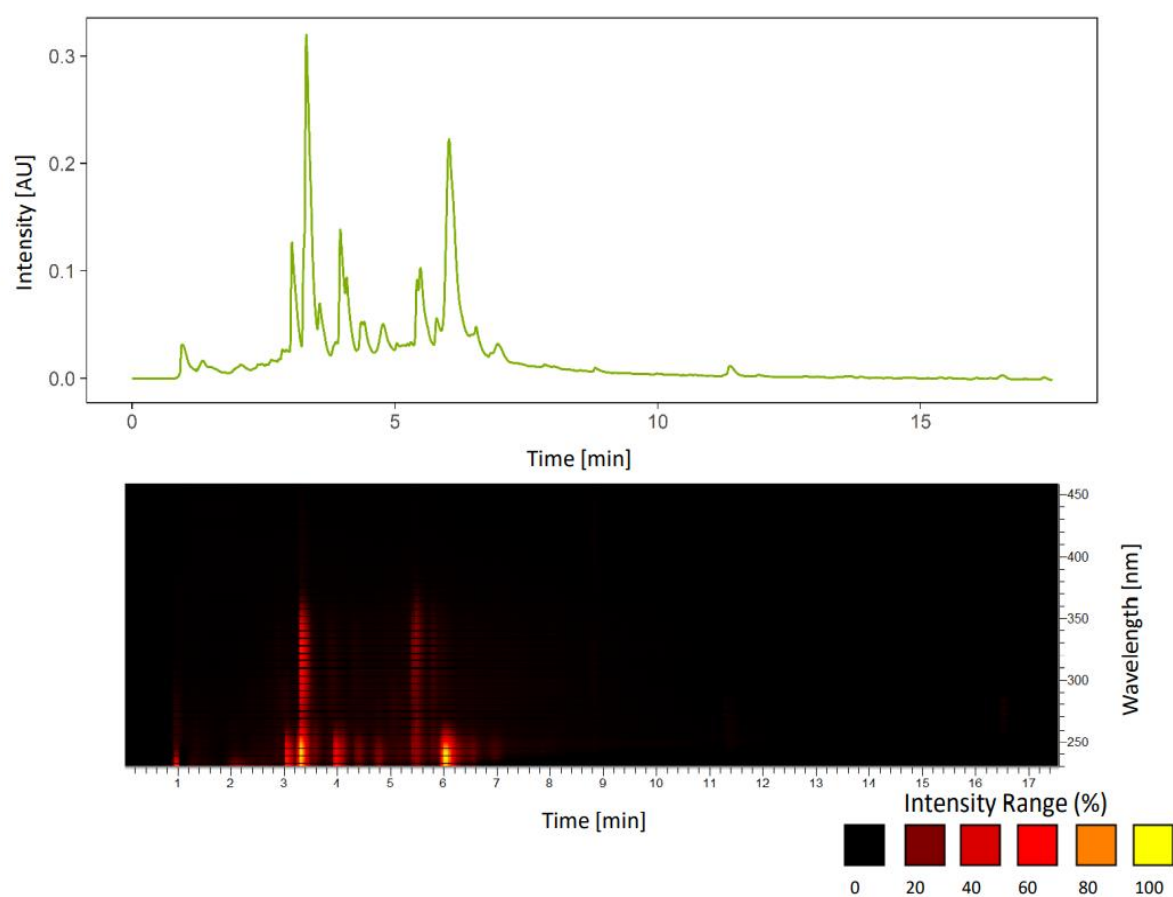
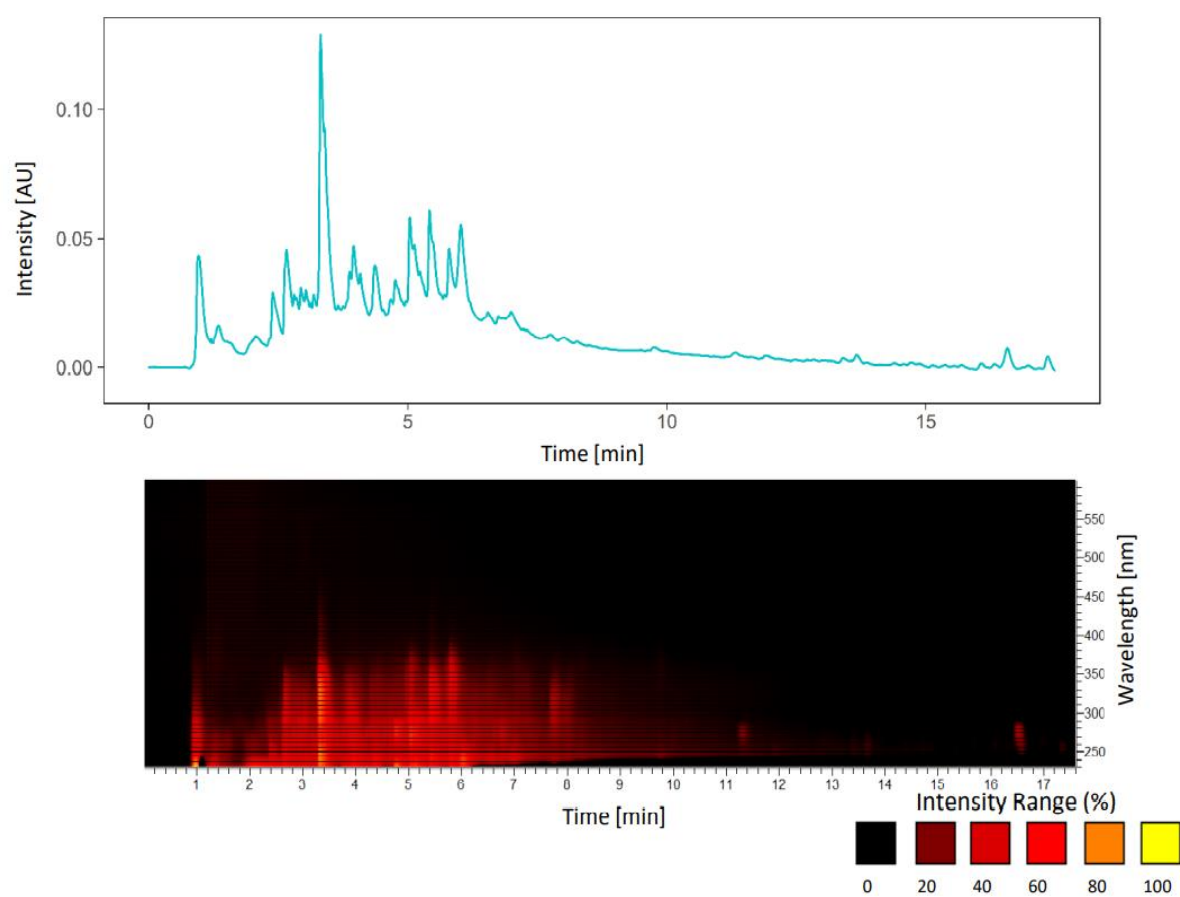


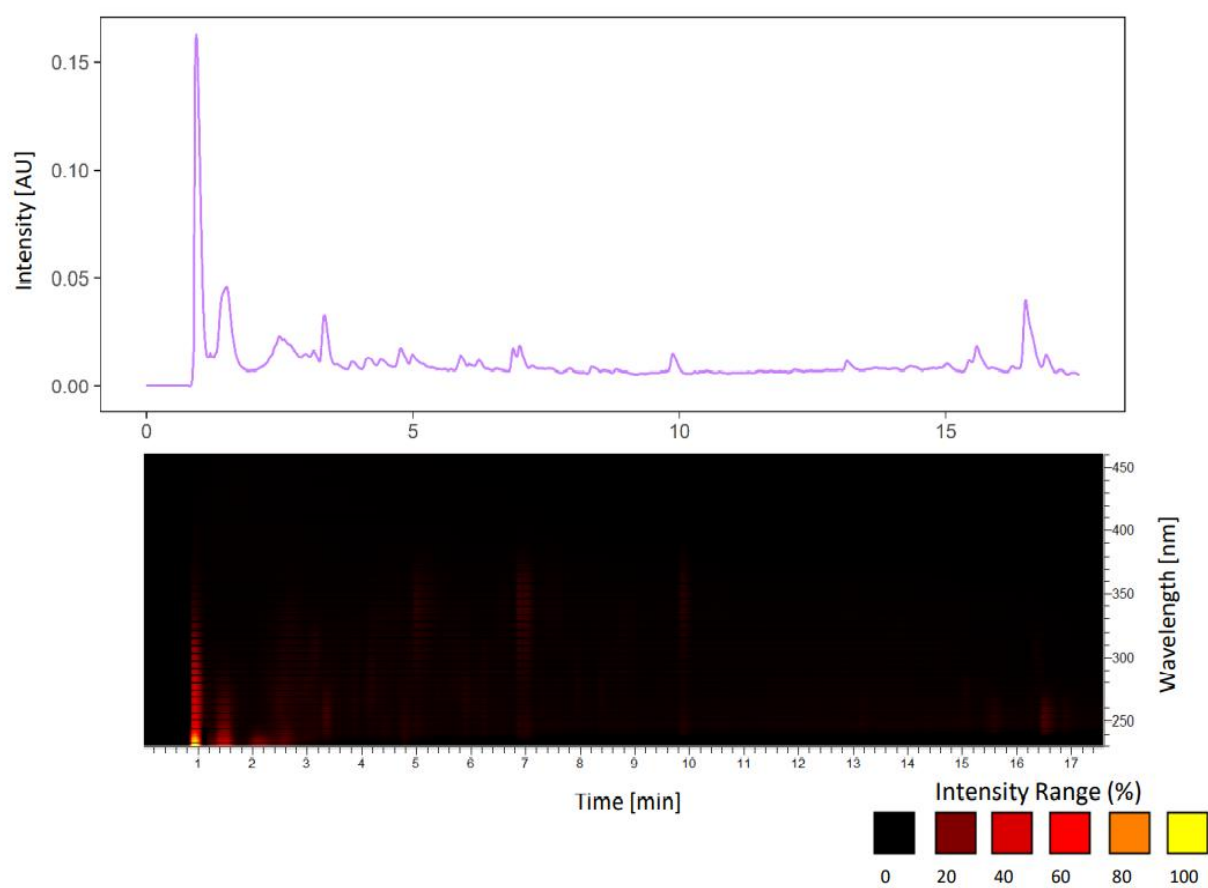
Figure S1. 2-D chromatogram of *Linnaea borealis* var. *borealis* extract of leafy shoots from natural sites.



**Figure S2.** 2-D chromatogram of *Linnaea borealis* var. *borealis* extract of shoot cultures.



**Figure S3.** 2-D chromatogram of *Linnaea borealis* var. *borealis* extract of roots from micropropagated plantlets.



**Figure S4.** 2-D chromatogram of *Linnaea borealis* var. *borealis* extract of biomass from callus cultures.