

# Cholesteric Molecular Tweezer Artificial Receptor for Rapid and Highly Selective Detection of $\text{Ag}^+$ in Food Samples

Zhe Liu<sup>1</sup>, Ying Ye<sup>1\*</sup>, Hong Wang<sup>2</sup> and Li-xia Luo<sup>1</sup>

<sup>1</sup> College of Agriculture and Animal Husbandry, Qinghai University, Xining, 810016 China; lz239880356@163.com (Z.L.); luolixia0515@163.com (L.-x.L.)

<sup>2</sup> College of Chemical Engineering, Qinghai University, Xining 810016, China; whong714@126.com

\* Correspondence: yeying08211983@163.com

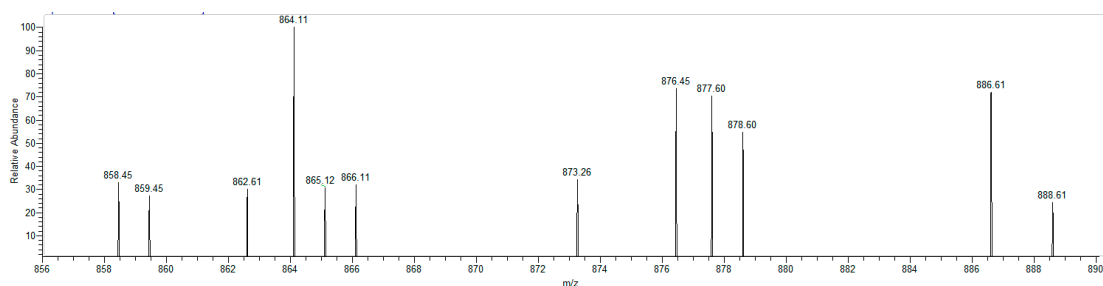


Figure S1. ESI-MS spectrum of complex compound 7a+ $\text{Ag}^+$ .