

Application of HPTLC multi-wavelength imaging and color scale fingerprinting approach combined with multivariate chemometric methods for medicinal plant clustering according to their species

Simona Codruța Aurora Cobzac^{1,2}, Neli Kinga Olah^{3,4}, Dorina Casoni^{1,2,*}

¹ Babeș-Bolyai University, Faculty of Chemistry and Chemical Engineering, Department of Chemistry, Arany János, No. 11, Cluj-Napoca, România

² Research Center for Advanced Chemical Analysis, Instrumentation and Chemometrics – ANALYTICA, Babeș-Bolyai University 11 Arany Janos str., RO-400028, Cluj-Napoca, Romania

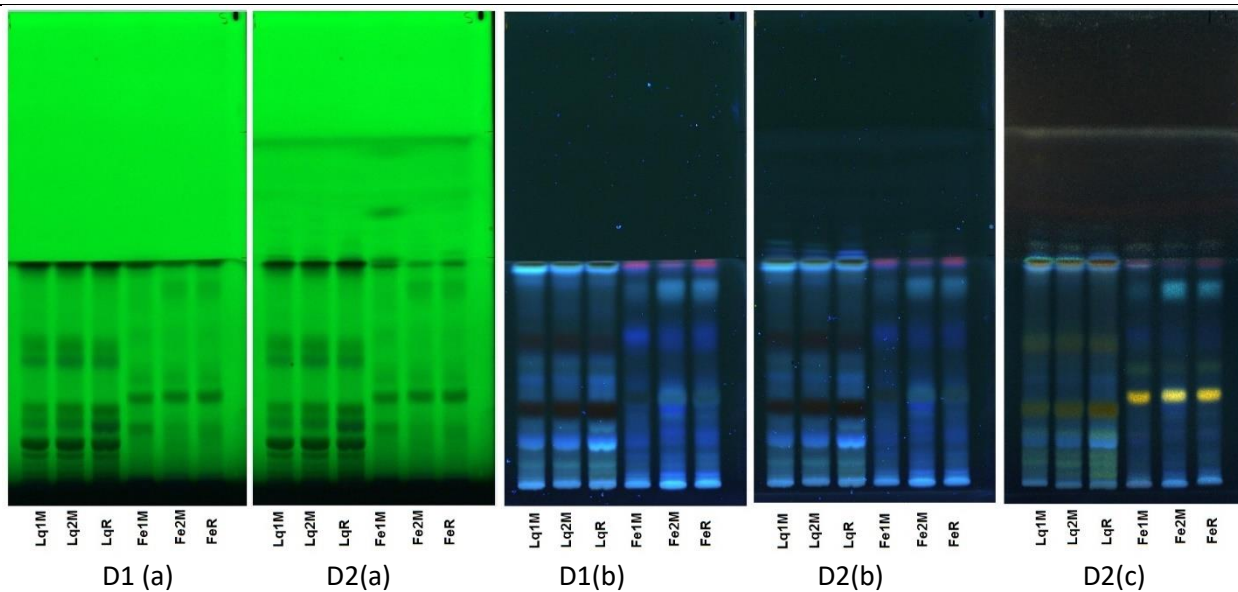
³ "Vasile Goldis" Western University of Arad, Faculty of Pharmacy, 86 L. Rebreanu str., Arad, Romania

⁴ SC PlantExtrakt SRL, 407059 Rădaia, Cluj, Romania

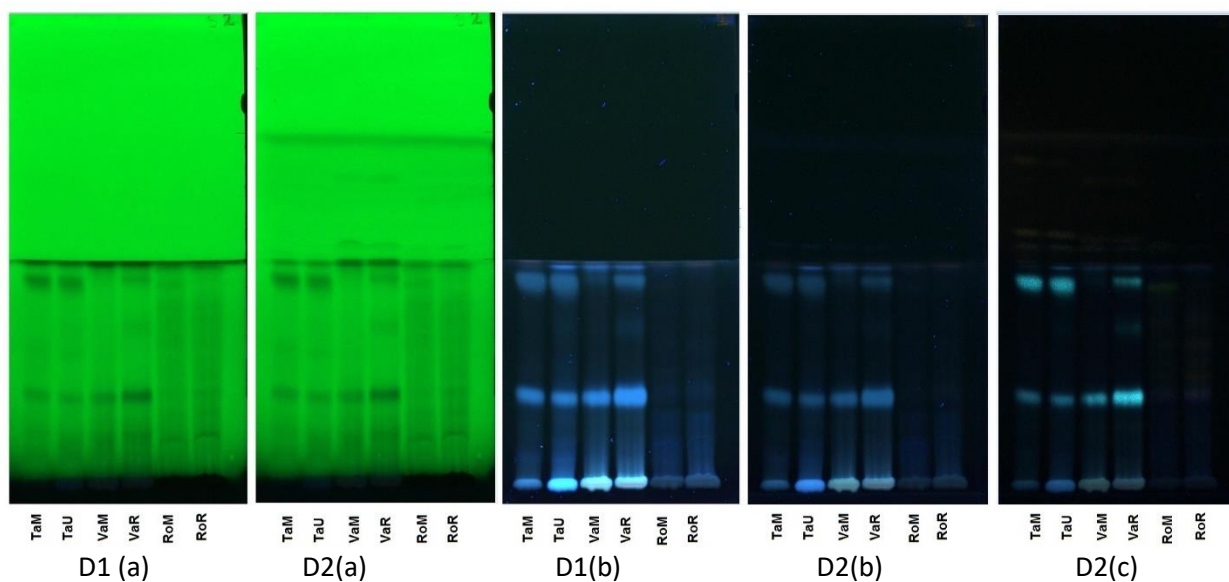
* Correspondence: dorina.casoni@ubbcluj.ro; Tel.: +40-264-590818

Plate
number

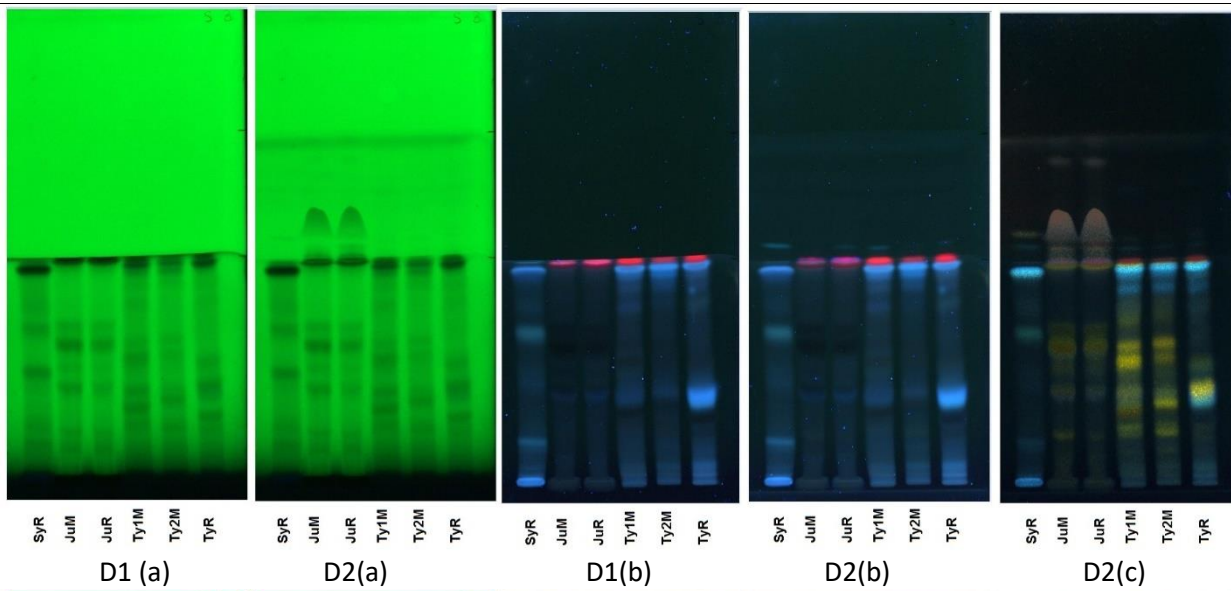
1



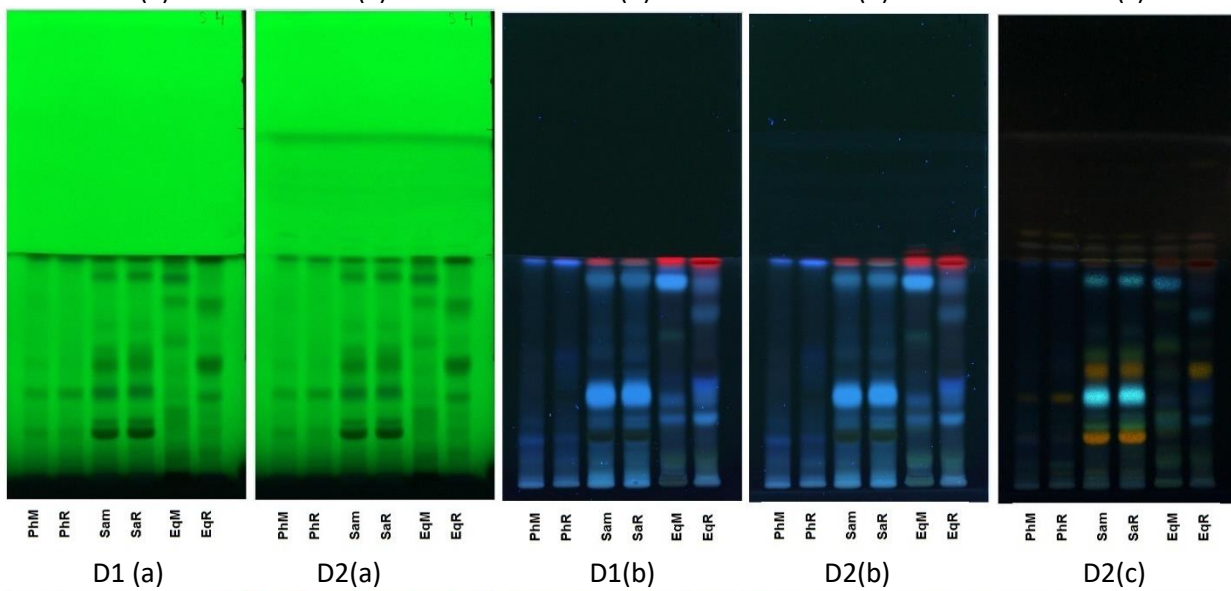
2



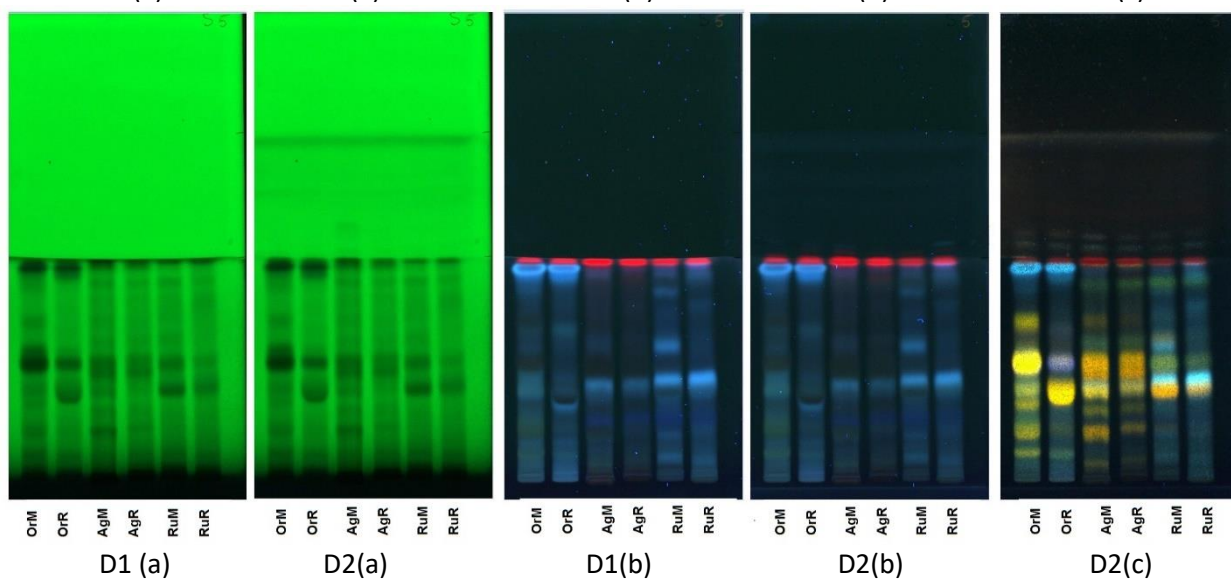
3



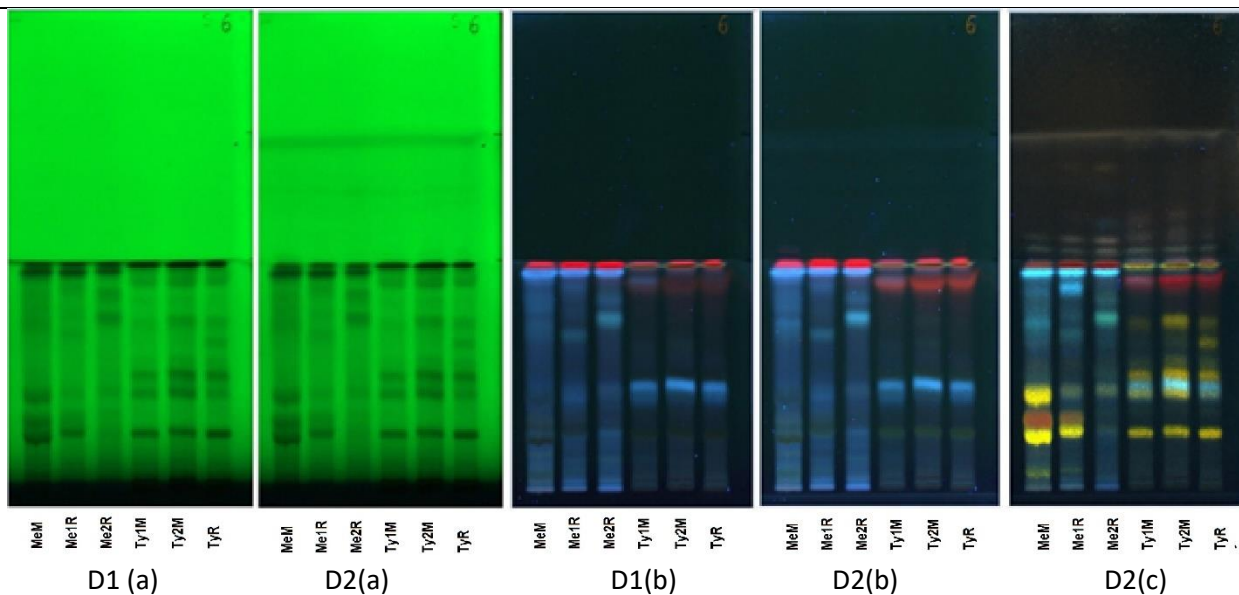
4



5



6



7

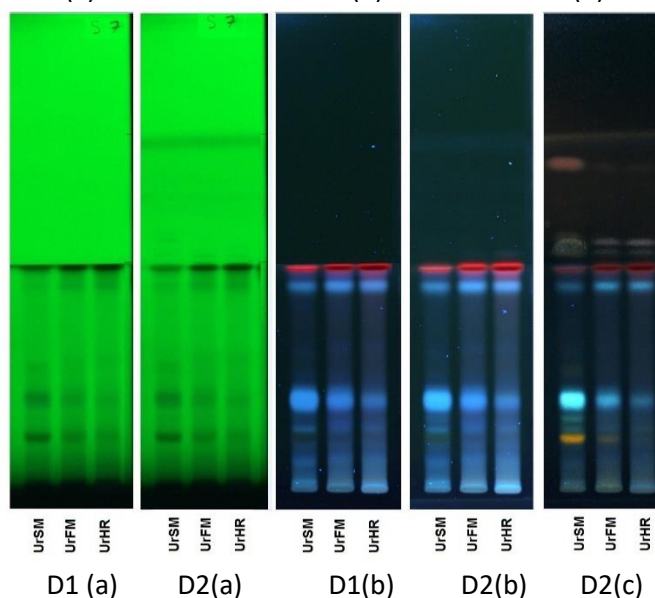


Figure S1. The images of the chromatographic plates (HPTLC Silica gel 60 F₂₅₄ plates numbered from 1 to 7) including all the analyzed medicinal plants extracts (corresponding name of the plants - in Table 1) obtained after first development (D1) using ethyl acetate - formic acid - water (80:10:10 v/v/v) as mobile phase and second development (D2) using toluene - ethyl acetate (95: 5, v/v) as mobile phase respectively; visualization (from left to right side) by fluorescence quenching under 254 nm (a), fluorescence at 365 nm (b) and at 365 nm after derivatization (c).