

Supplementary Materials

The Oral Administration of *Sanguisorba officinalis* Extract Improves Physical Performance through LDHA Modulation

Jung Ho Han ^{1,2}, MinJeong Kim ³, Hee-Jin Choi ^{1,2}, Jung Sook Jin ², Syng-Ook Lee ⁴, Sung-Jin Bae ², Dongryeol Ryu ^{3,*} and Ki-Tae Ha ^{1,2,*}

¹ Department of Korean Medical Science, School of Korean Medicine, Pusan National University, Yangsan, Gyeongnam 50612, Korea; hanjh1013@pusan.ac.kr (J.H.H.); choih@musc.edu (H.-J.C.)

² Healthy Aging Korean Medical Research Center, Pusan National University, Yangsan, Gyeongnam 50612, Korea; jinpaldoock@hanmail.net (J.S.J.); dr.nowornever@pusan.ac.kr (S.-J.B.)

³ Department of Molecular Cell Biology, Biomedical institute for Convergence at SKKU (BICS), School of Medicine, Sungkyunkwan University (SKKU), Suwon, Gyeonggi-do 16419, Korea; alswjd0105@skku.edu

⁴ Department of Food Science and Technology, Keimyung University, Daegu 42601, Korea; synglee@kmu.ac.kr

* Correspondence: freefall@skku.edu (D.R.); hagsis@pusan.ac.kr (K.-T.H.)

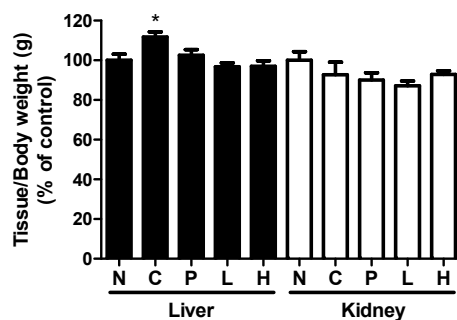
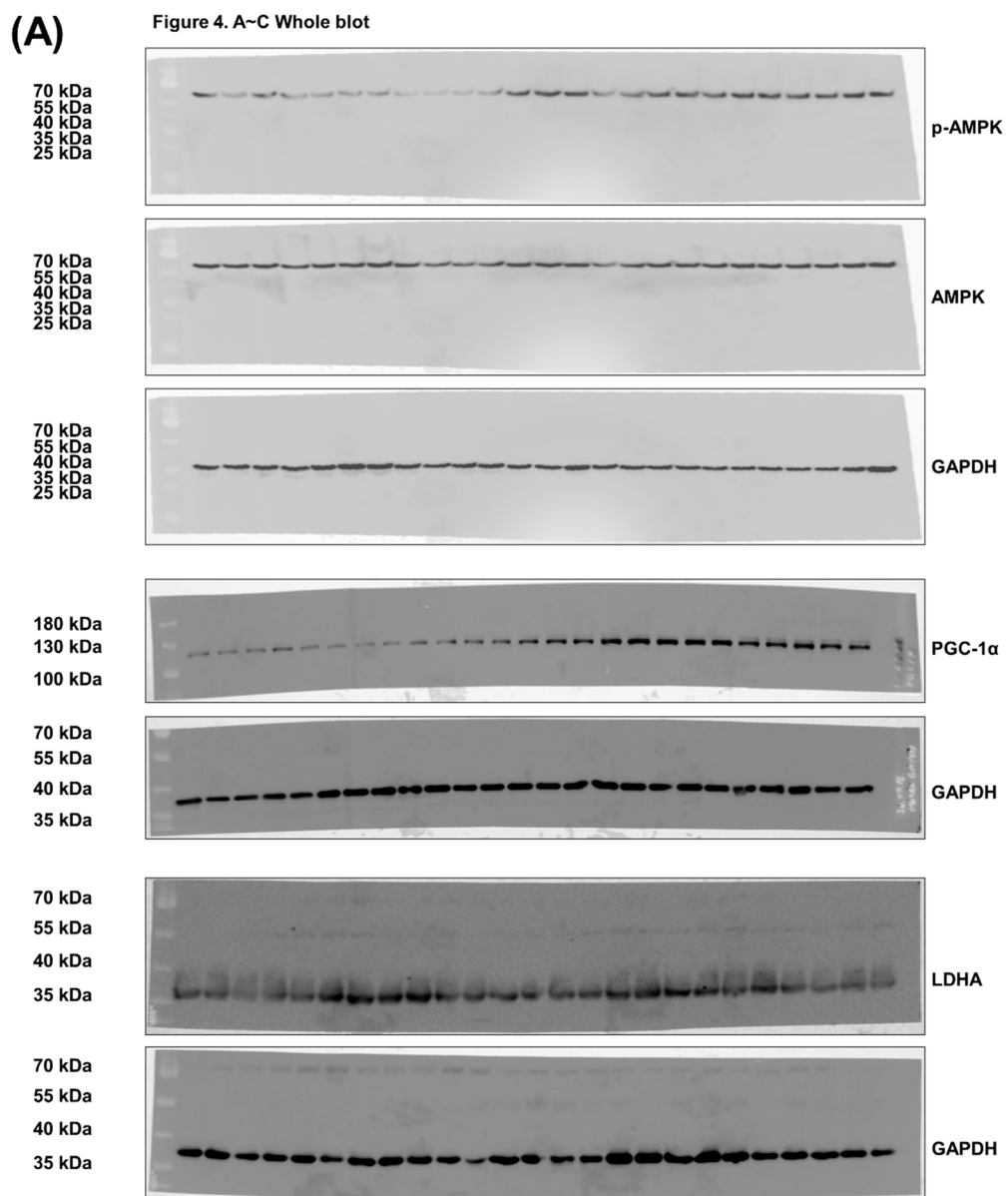


Figure S1. Measurement of drug toxicity. The weight of the liver and kidney was measured. The results are shown as mean \pm SEM. * $p < 0.05$ compared to each N group.



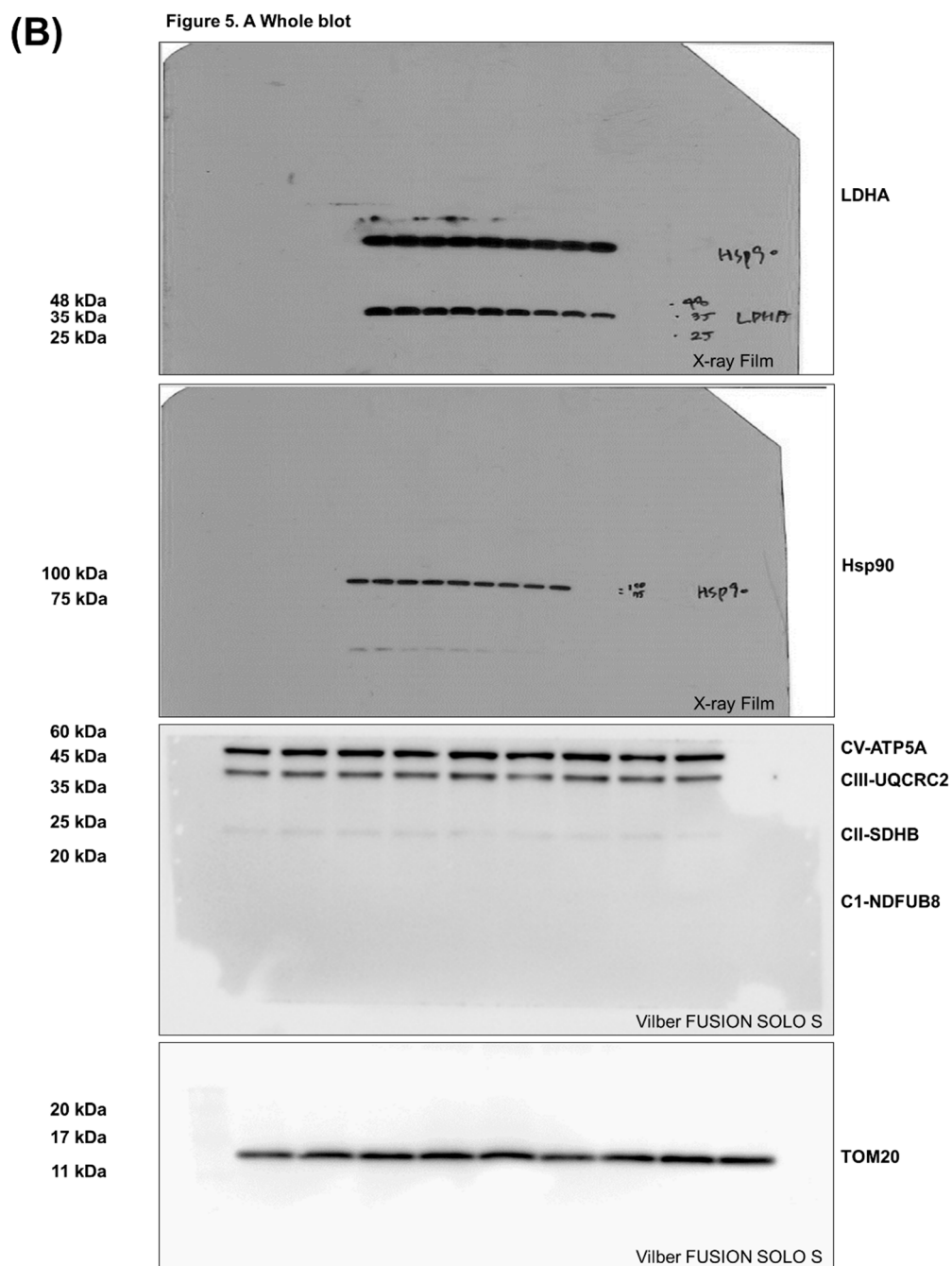


Figure S2. The whole blot of Western blot analysis. This figure shows the raw data of Western blot assay in this study.