

Supplementary Information for

Oxyresveratrol inhibits R848-induced pro-inflammatory mediators release by human dendritic cells even when embedded in PLGA nanoparticles

Salvatore Calogero Gaglio ¹, Marta Donini ², Piyachat Evelyn Denbaes ¹, Stefano Dusi ^{2*}, Massimiliano Perduca ^{1*}

1 Department of Biotechnology, University of Verona, Strada Le Grazie 15, 37134 Verona, Italy.

2 Department of Medicine, Section of General Pathology, University of Verona, Strada Le Grazie 8, 37134, Verona, Italy

* Correspondence: MP, massimiliano.perduca@univr.it, Tel.: +39 0458027984; SD, stefano.dusi@univr.it, Tel.: +39 0458027124

Keywords: dendritic cells, oxyresveratrol, cytokines, PLGA nanoparticles, inflammation

Number of pages: S1-S6

Number of Tables: Table S1-S2

Number of Figures: Figure S1-S3

Table S1. Comparison between DLS, AFM and Nanosight tracking analysis data for empty and oxyresveratrol loaded (PLGA[oxy]) nanoparticles.

Nanoformulation	Z-average (nm)	Peak number (nm)	Afm diameter*(nm)	Nanosight tracking analysis (nm)
Empty	170.2 ± 2.5	148.3 ± 43.0	165.0 ± 34.5	140.8 ± 25.0
PLGA[Oxy]	169.6 ± 3.5	140.5 ± 42.9	171.0 ± 58.7	139.3 ± 26.7

*The statistical analysis was performed over a population major than 100 particles using SPIP™ statistical tool.

Table S2. Comparison between encapsulation efficiency value calculated directly breaking the nanoparticles (EE_{direct}) and the same value indirectly estimated (EE_{indirect}). The results are expressed as the mean value of the percentage \pm SD of the initial amount of oxyresveratrol added to the reaction for three independent measures on three replica samples.

Nanoformulation	EE_{direct} (%)	EE_{indirect} (%)
PLGA[OXY]	43.75 \pm 3.1	45.47 \pm 4.55

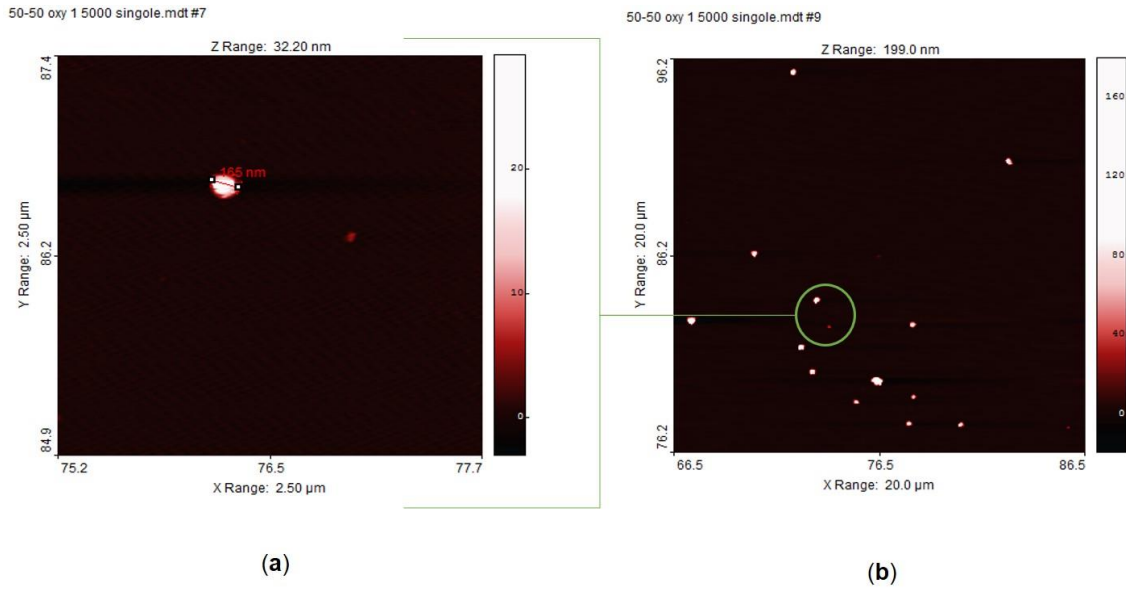
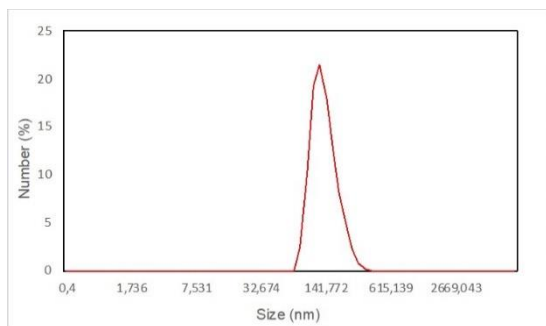
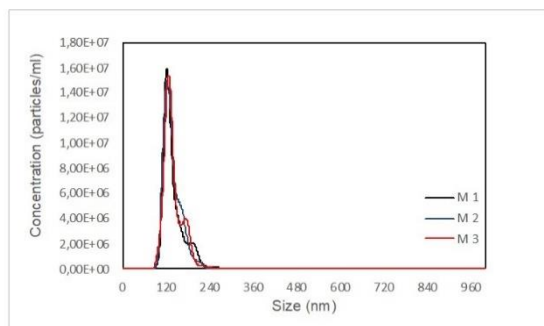


Figure S1. AFM image of a single oxyresveratrol-loaded PLGA nanoparticle with a resolution of 2.5x2.5 μm (a). Image of several single loaded nanoparticles and an aggregate with a resolution of 20X20 μm (b). The images were collected in intermittent mode.

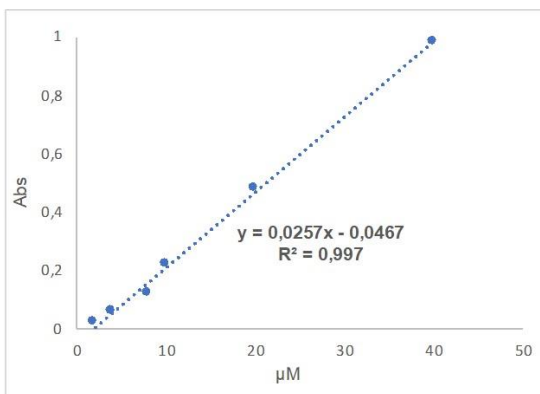


(a)

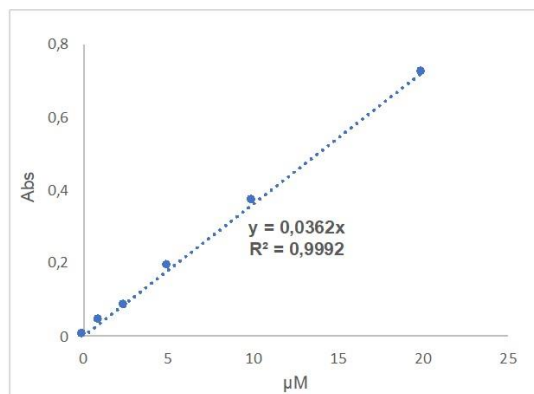


(b)

Figure S2. DLS Number diagram (a) and Nanosight tracking analysis diagram (b) of oxyresveratrol-loaded PLGA nanoparticles. Measurements were performed in triplicate.



(a)



(b)

Figure S3. Calibration curve for oxyresveratrol in DMSO (a). Calibration curve for oxyresveratrol in aqueous solution (b).