

**Polyphenol profiling of chestnut pericarp, integument and curing water
extracts to qualify these food by-products as a source of antioxidants**

Supplementary Materials

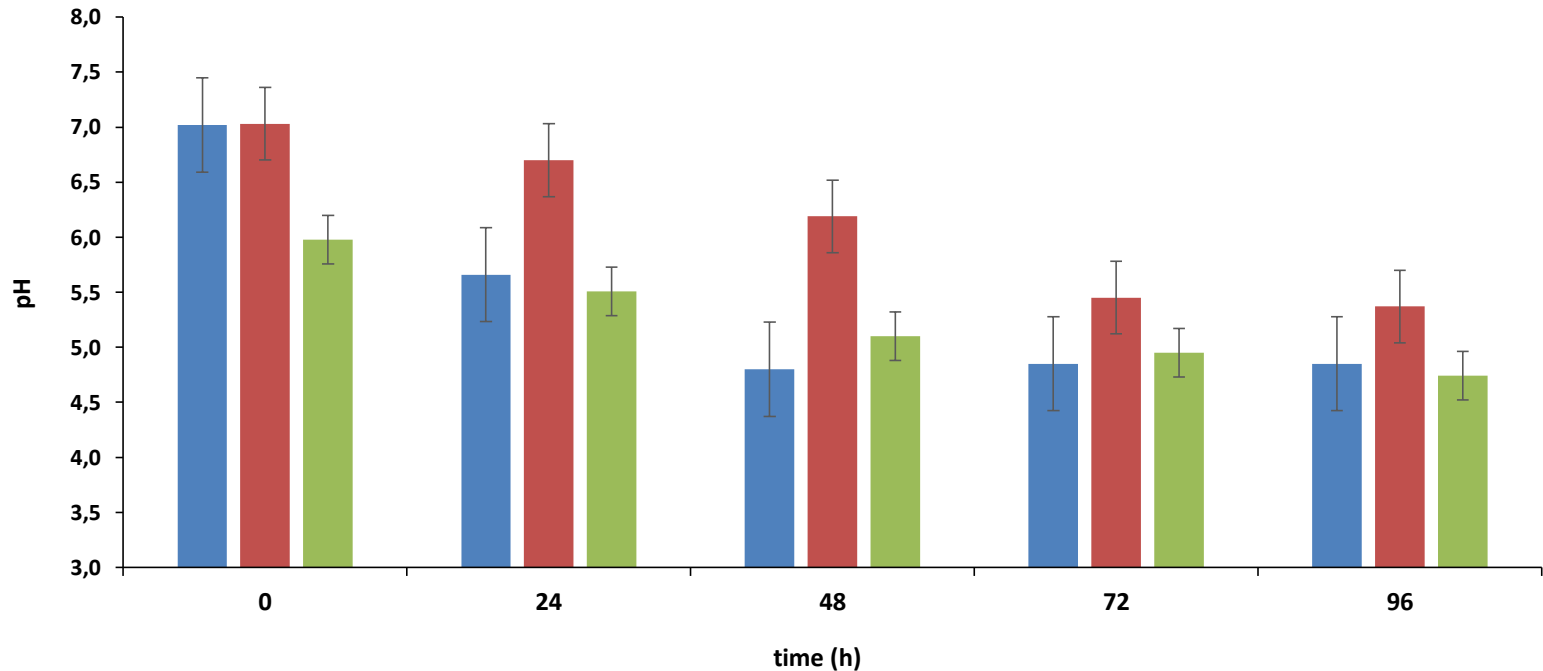
Supplementary Materials

Figure 1 - pH profile of medium during the water curing with different treatments

A) tap water containing *L. pentosus*

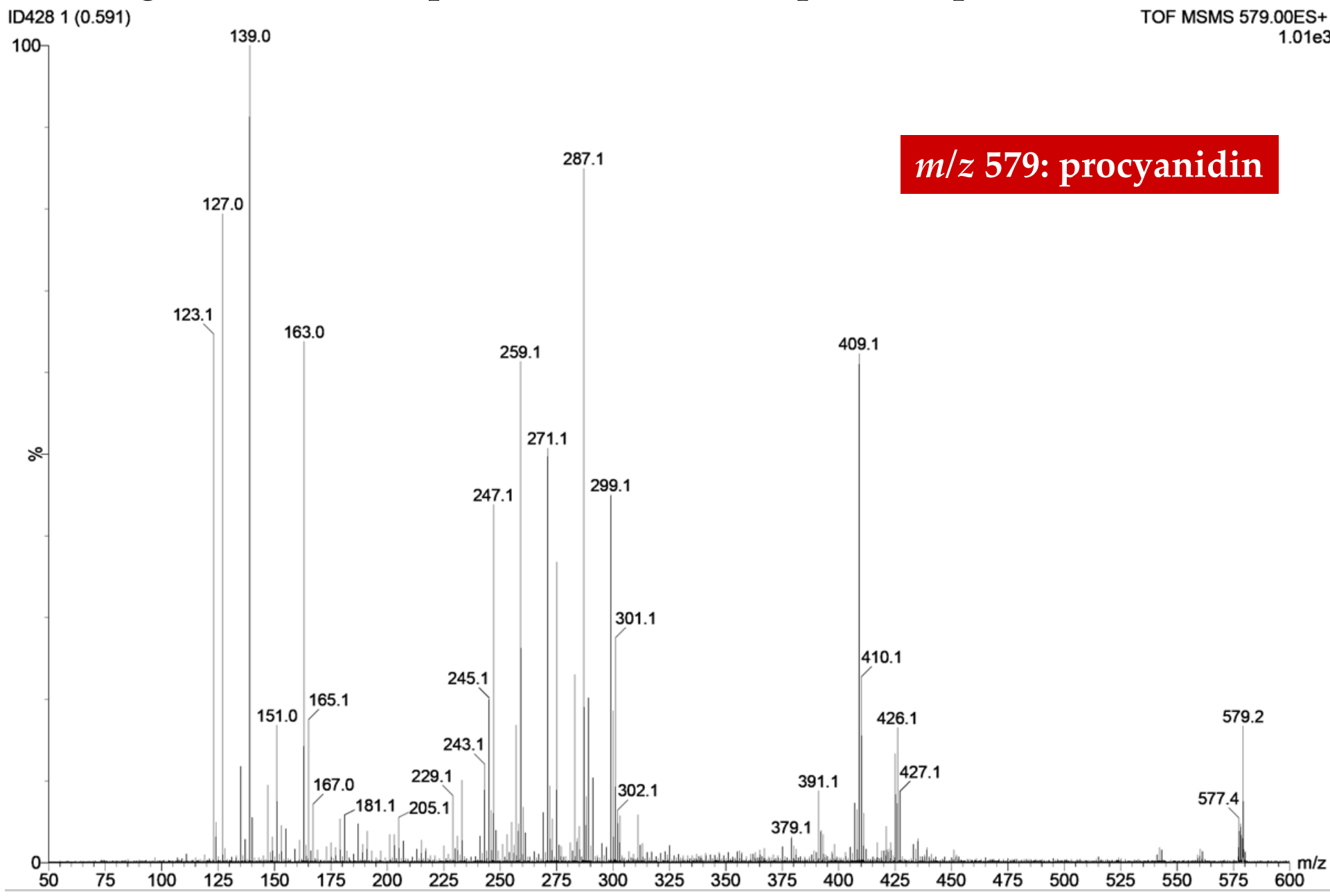
B) tap water

C) recycled wastewater from a previous curing treatment with tap water



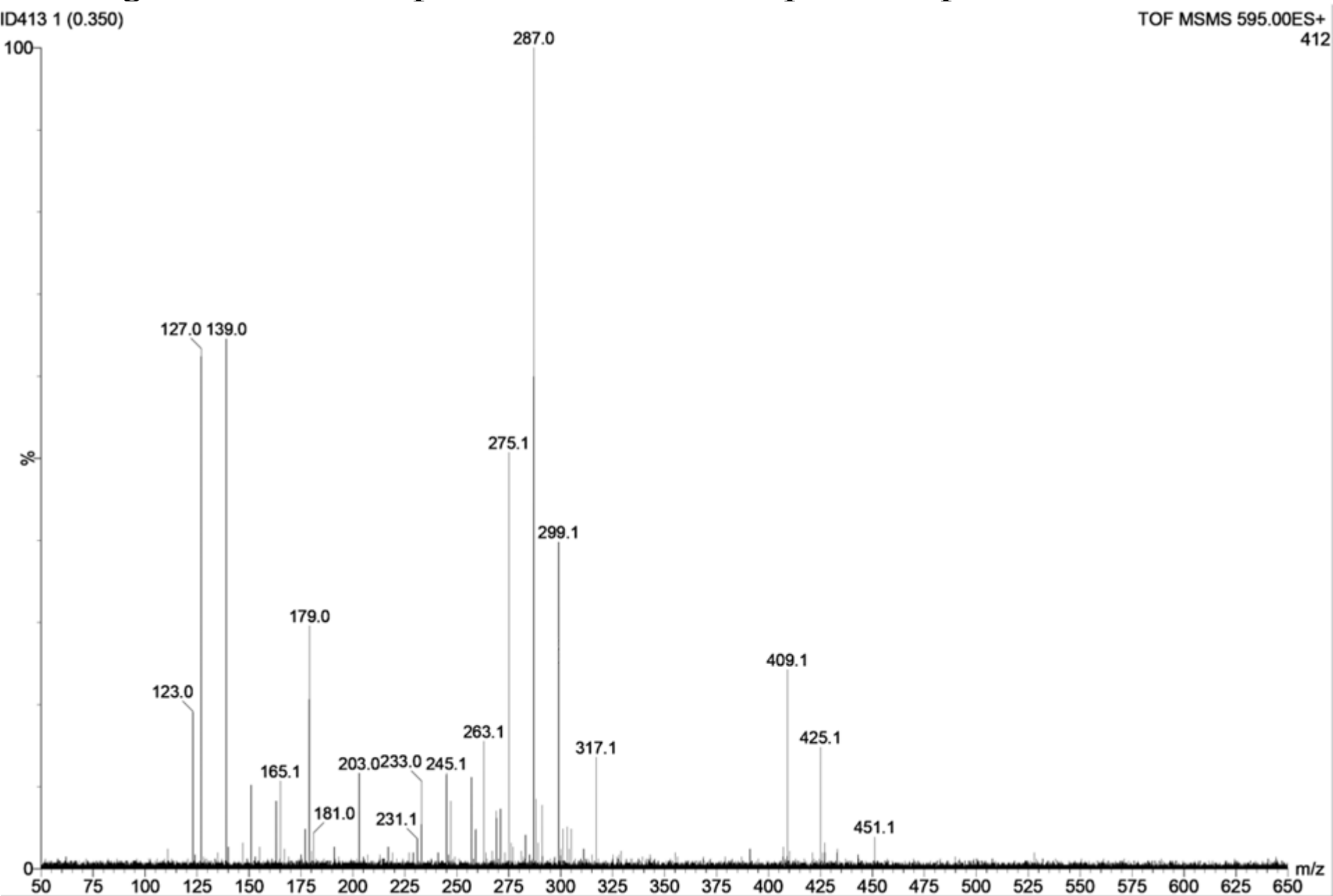
Supplementary Materials

Figure 2 - MS/MS spectrum at m/z 579 acquired in positive ion mode



Supplementary Materials

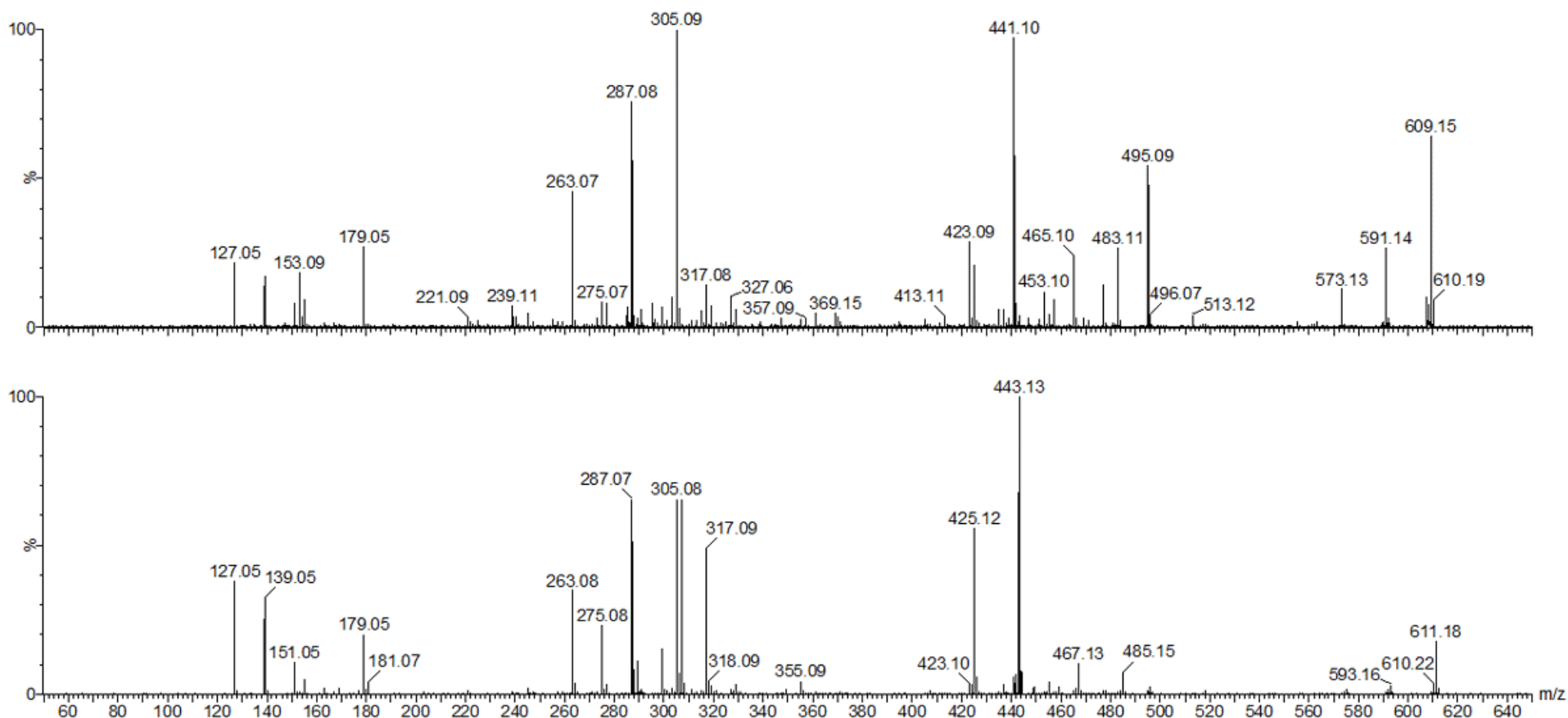
Figure 3 - MS/MS spectrum at m/z 595 acquired in positive ion mode



Supplementary Materials

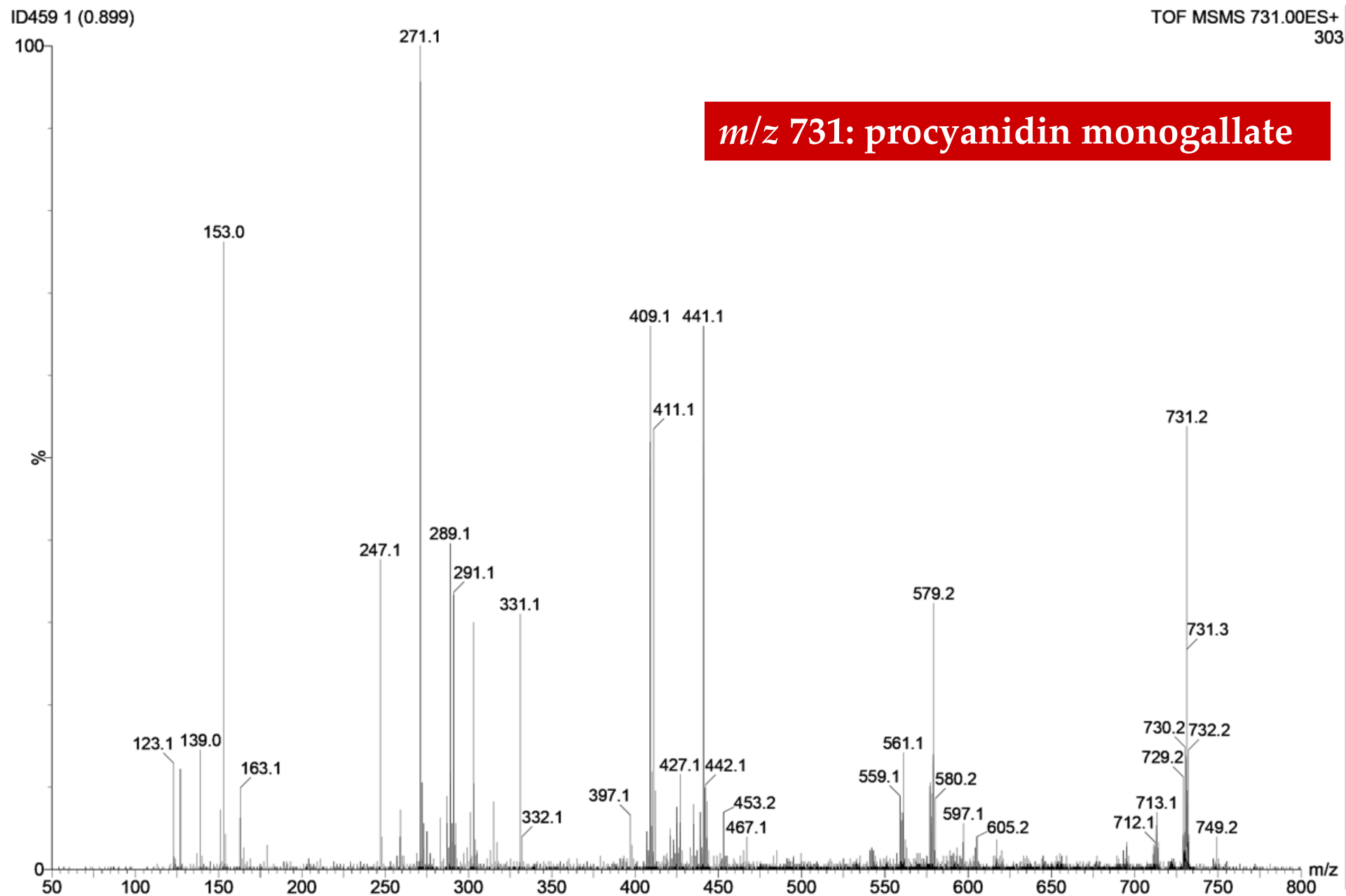
Figure 4 - MS/MS spectrum at m/z 609 and 611 acquired in positive ion mode

m/z 609 and 611: dimeric (epi)gallocatechin A- and B-type



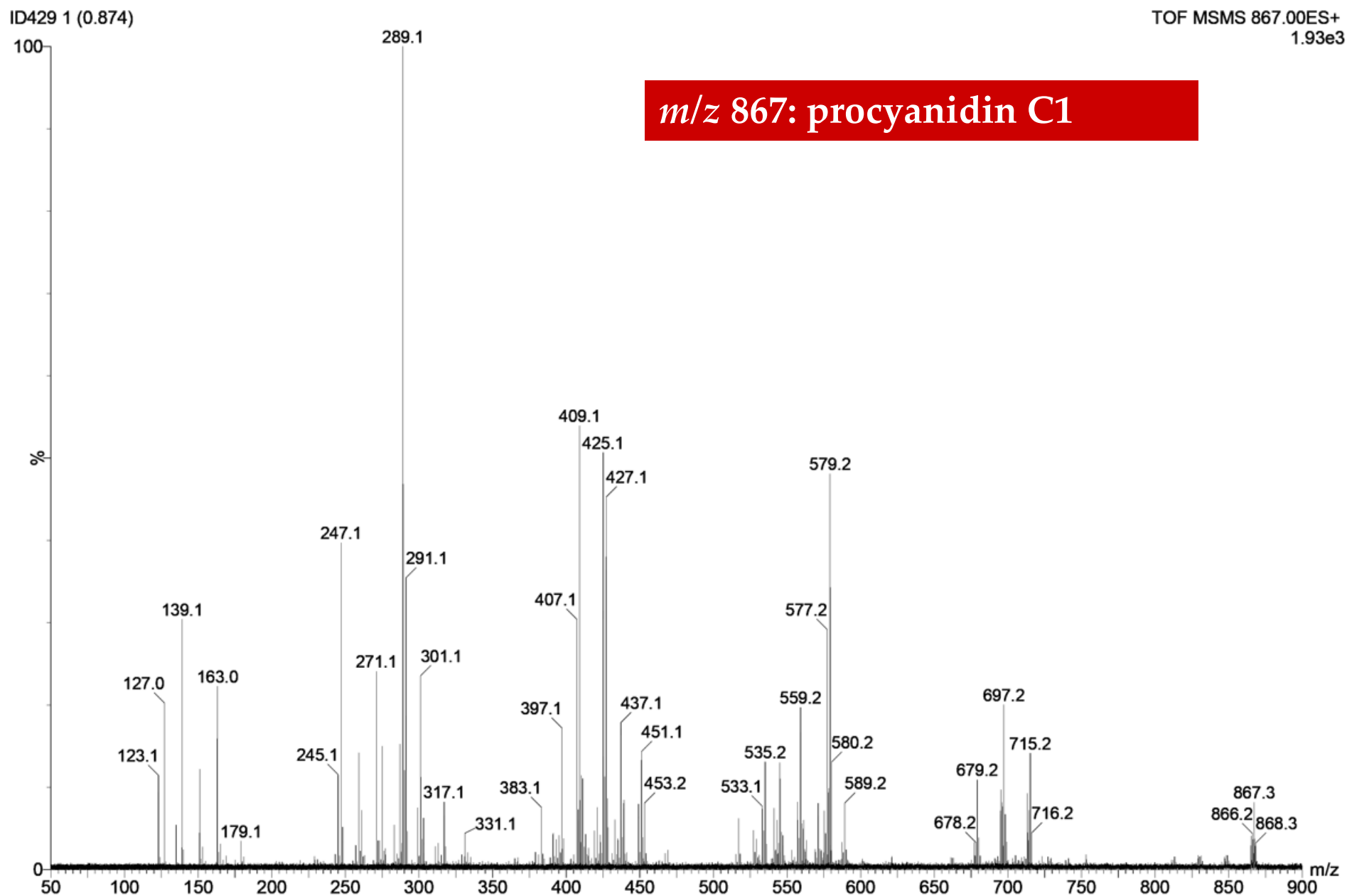
Supplementary Materials

Figure 5 - MS/MS spectrum at m/z 731 acquired in positive ion mode



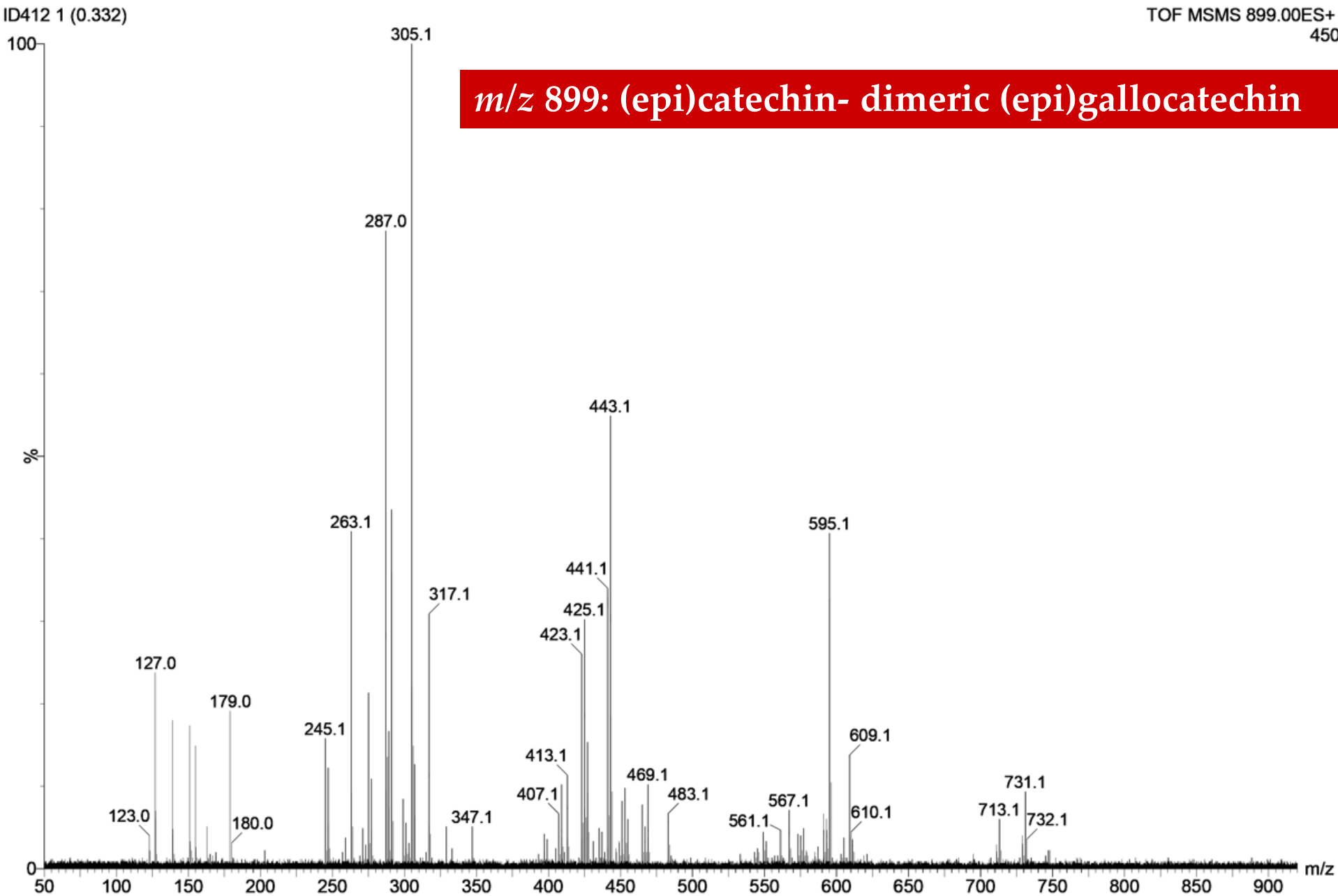
Supplementary Materials

Figure 6 - MS/MS spectrum at m/z 867 acquired in positive ion mode



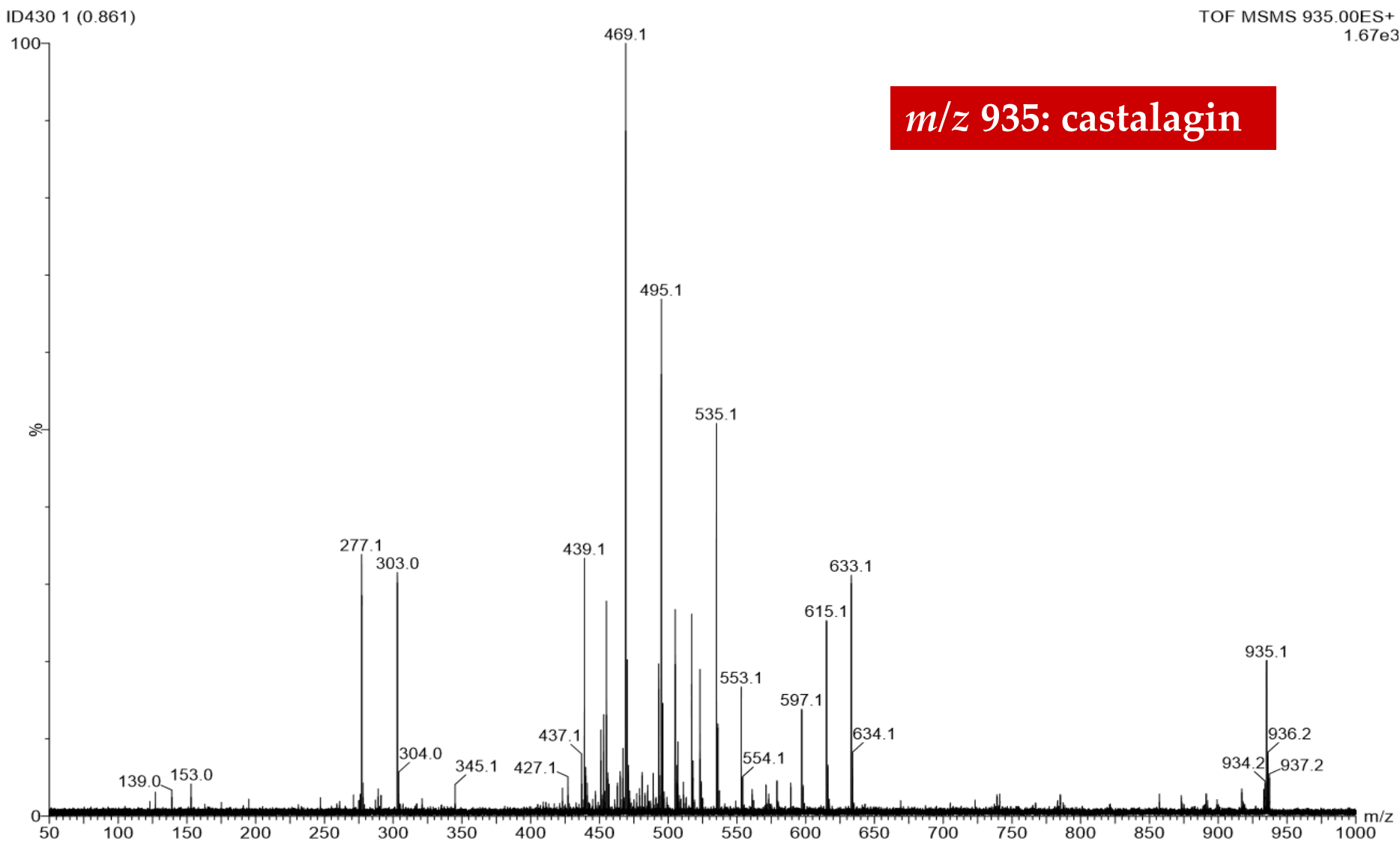
Supplementary Materials

Figure 7 - MS/MS spectrum at m/z 899 acquired in positive ion mode



Supplementary Materials

Figure 8 - MS/MS spectrum at m/z 935 acquired in positive ion mode

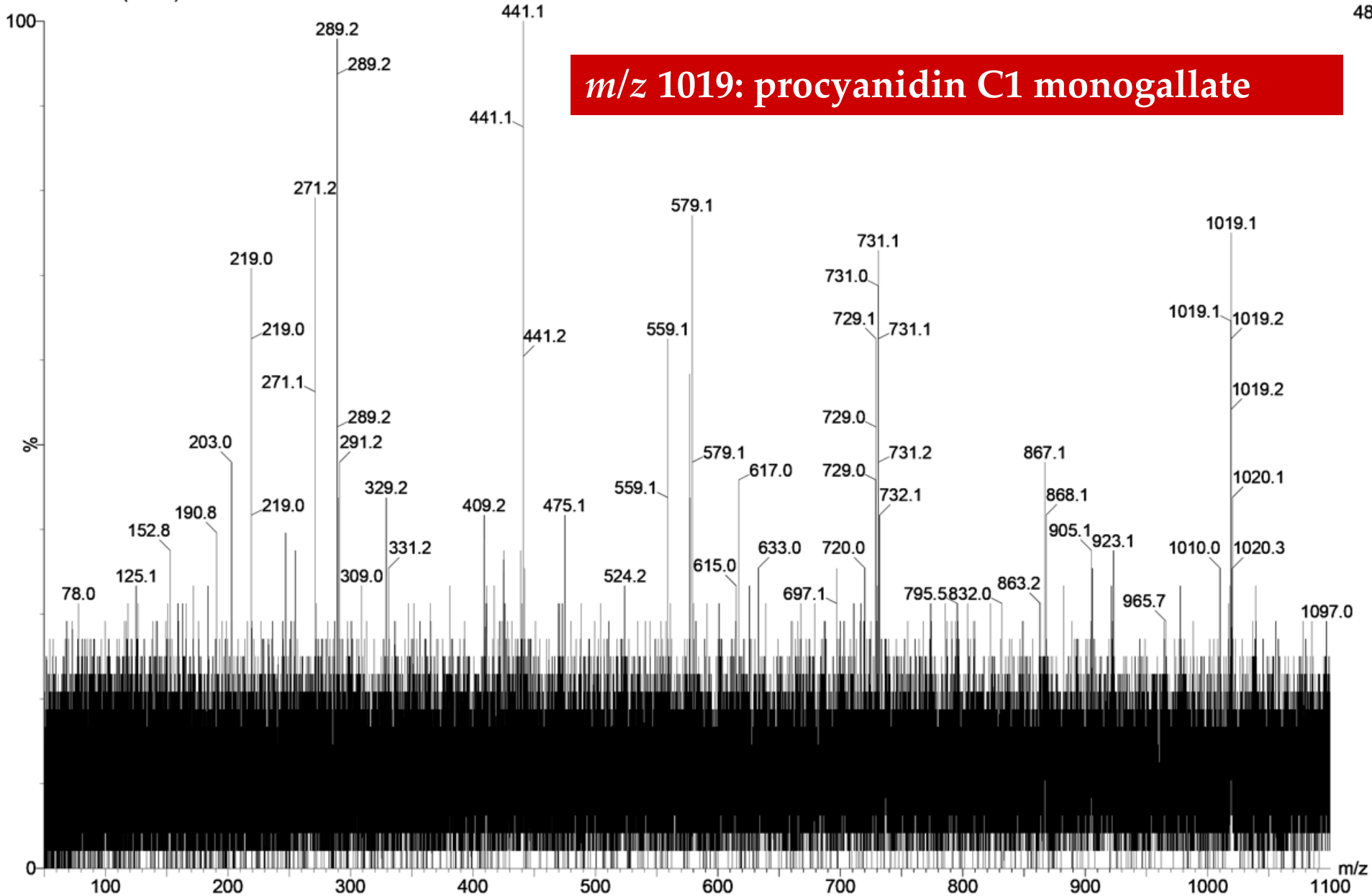


Supplementary Materials

Figure 9 - MS/MS spectrum at m/z 1019 acquired in positive ion mode

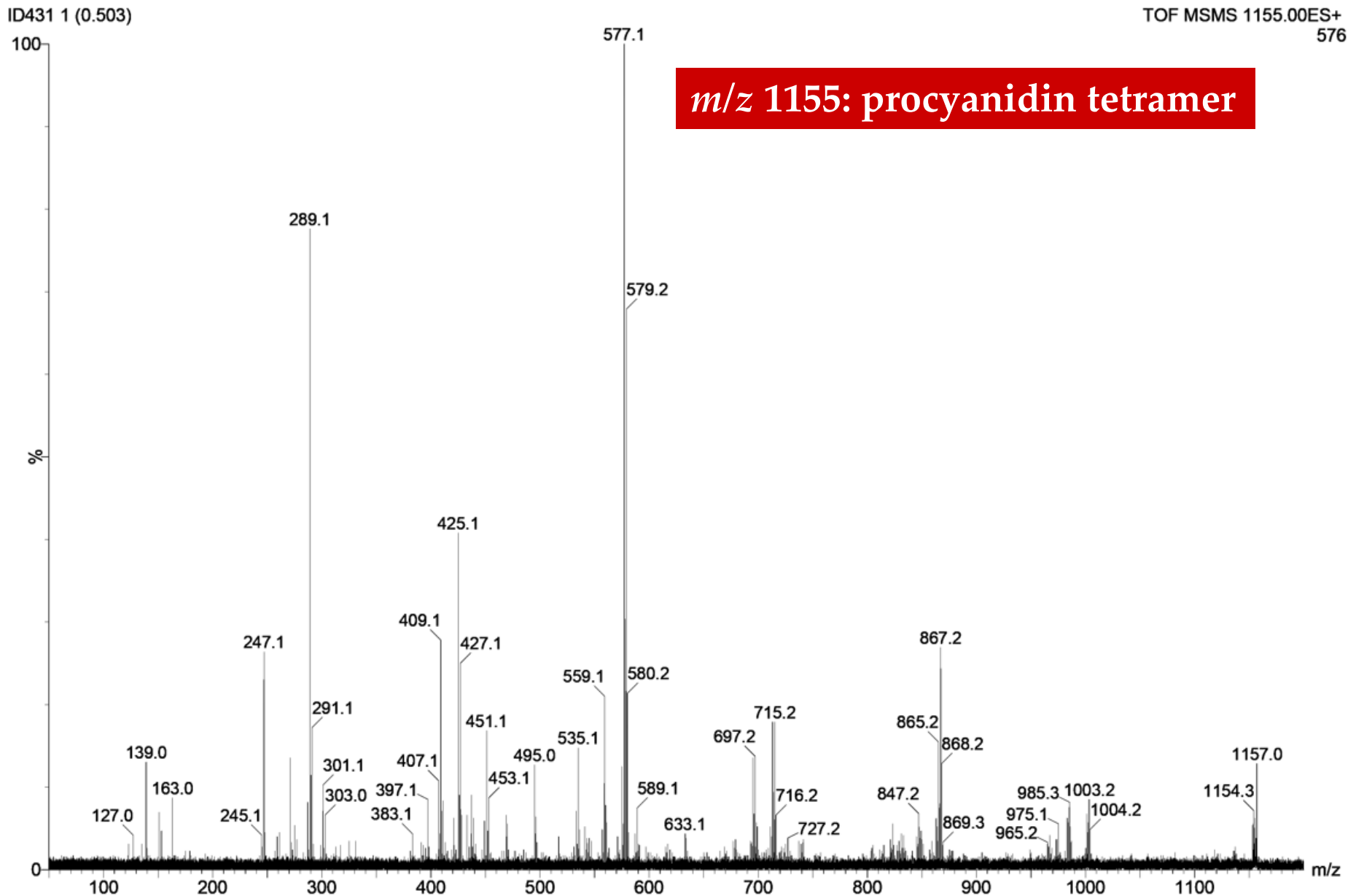
13ID000010 1 (1.348)

TOF MSMS 1019.00ES+
48



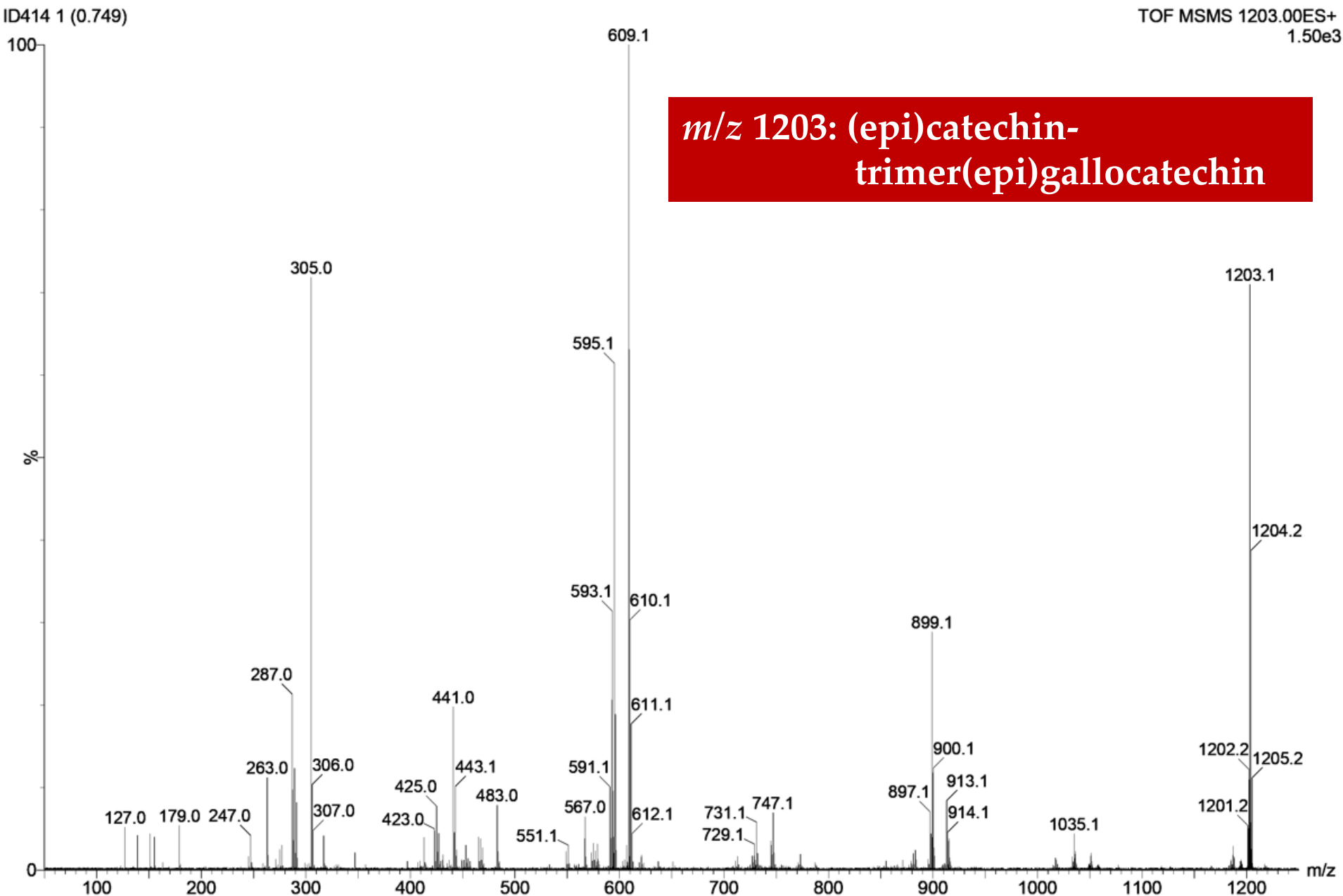
Supplementary Materials

Figure 10 - MS/MS spectrum at m/z 1155 acquired in positive ion mode



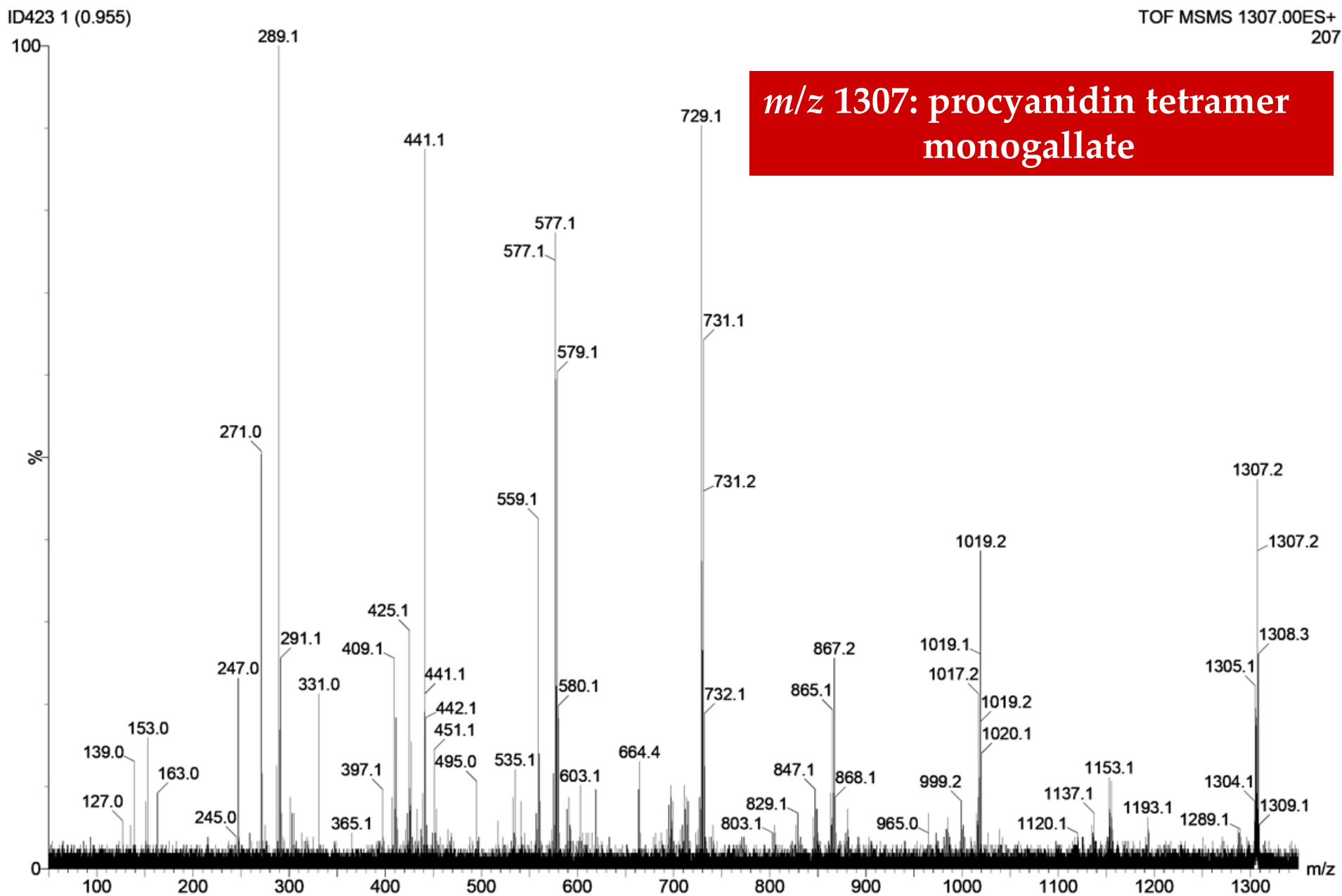
Supplementary Materials

Figure 11 - MS/MS spectrum at m/z 1203 acquired in positive ion mode



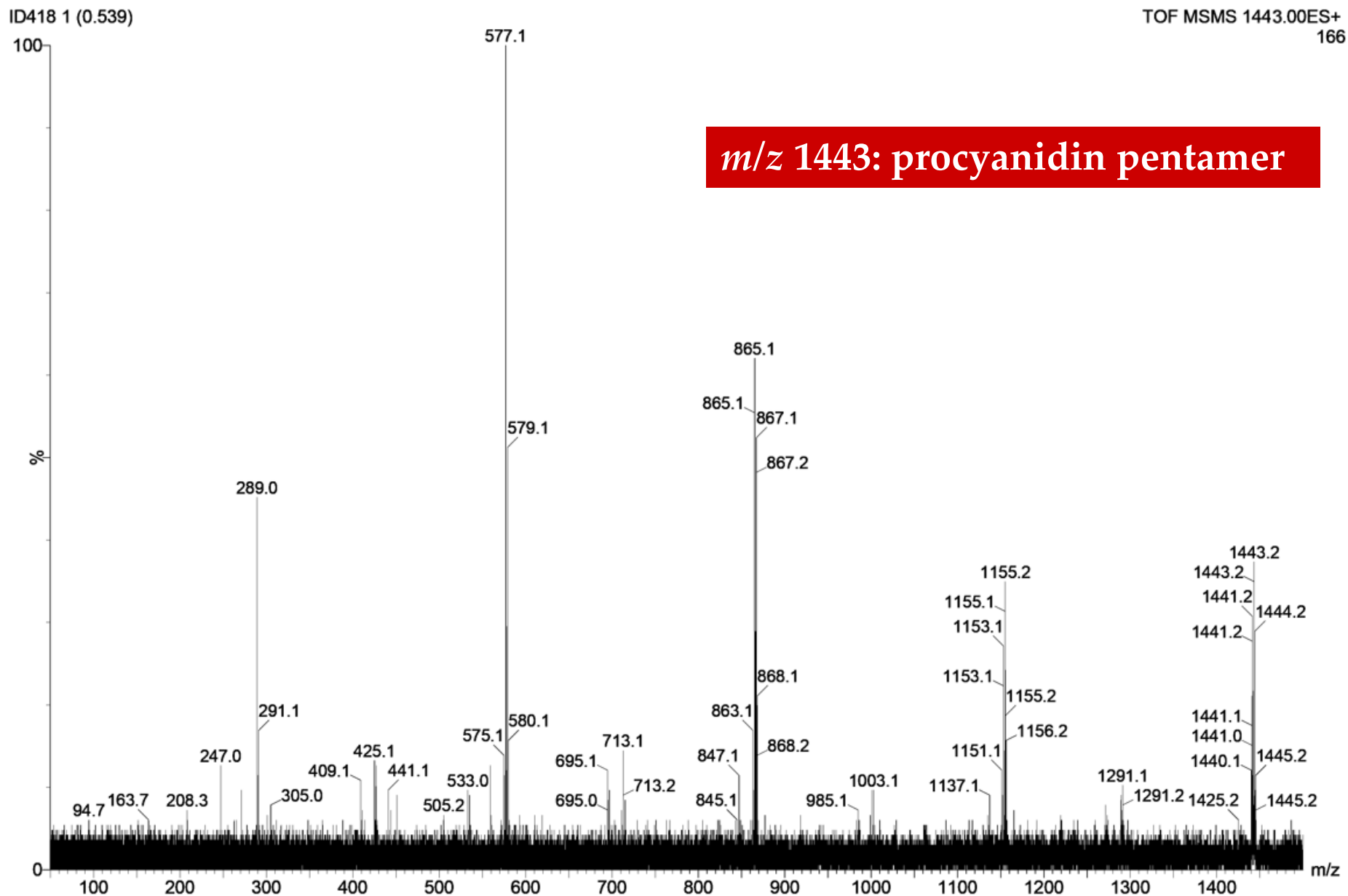
Supplementary Materials

Figure 12 - MS/MS spectrum at m/z 1307 acquired in positive ion mode



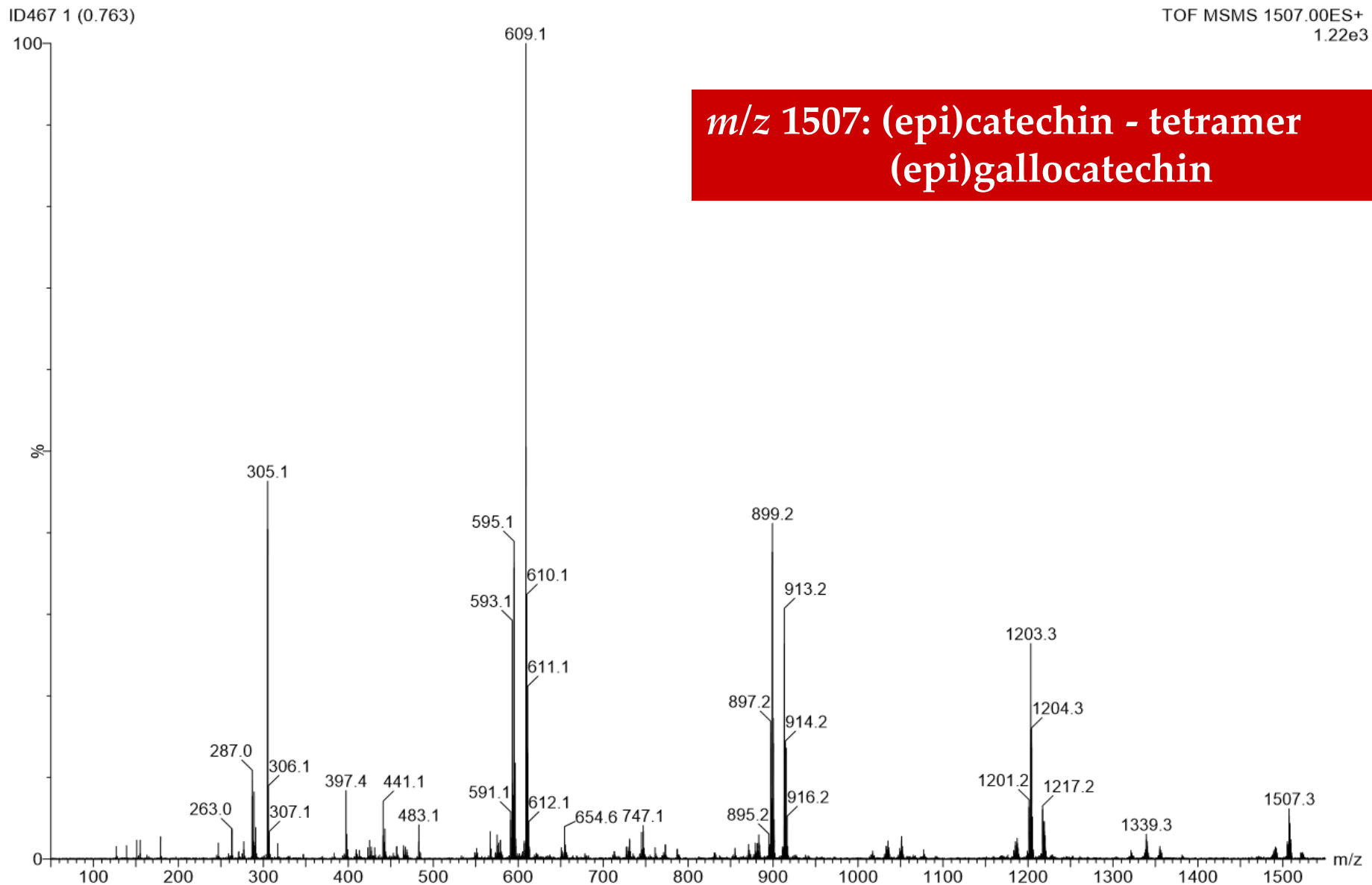
Supplementary Materials

Figure 13 - MS/MS spectrum at m/z 1443 acquired in positive ion mode



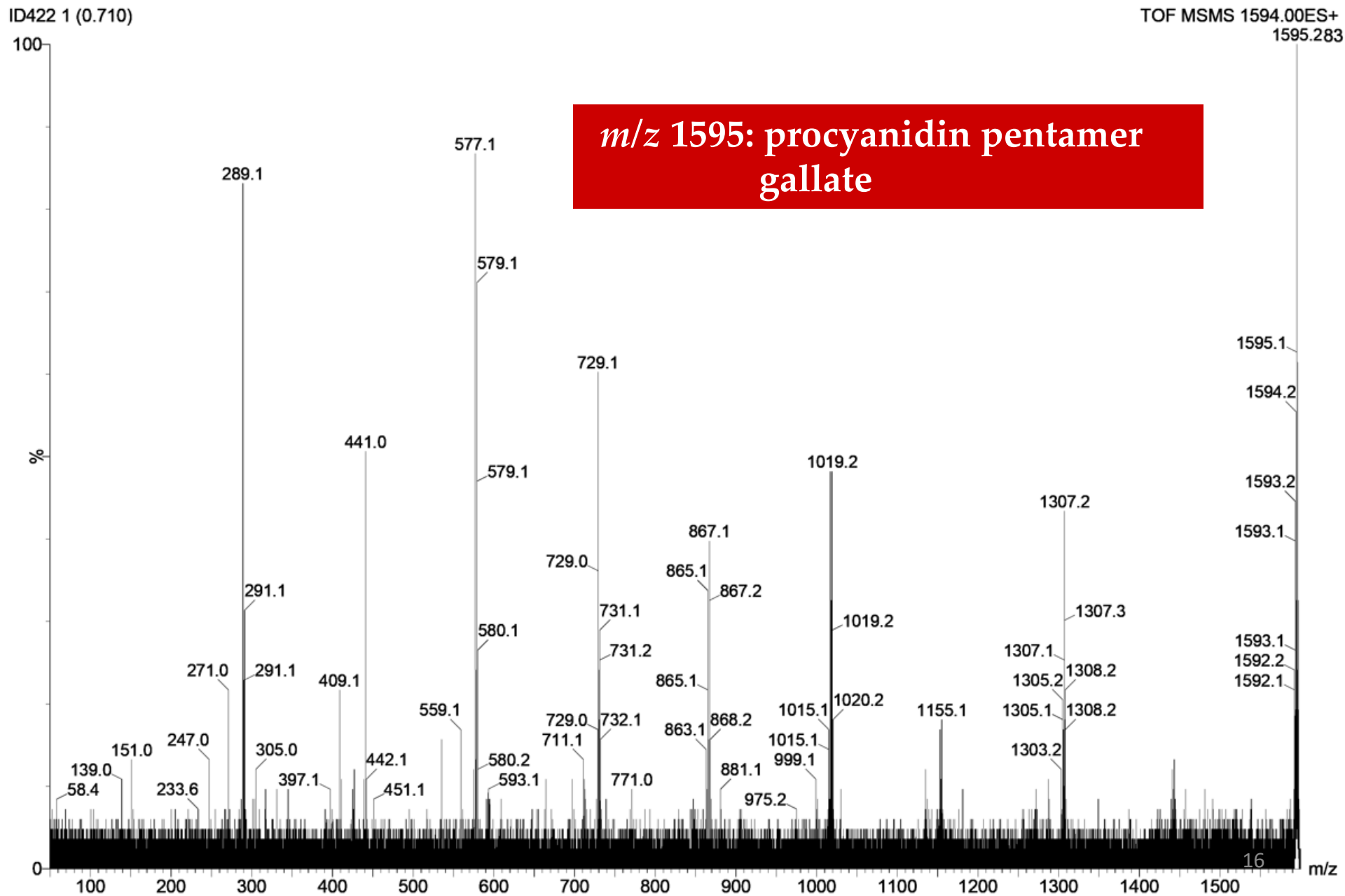
Supplementary Materials

Figure 14 - MS/MS spectrum at m/z 1507 acquired in positive ion mode



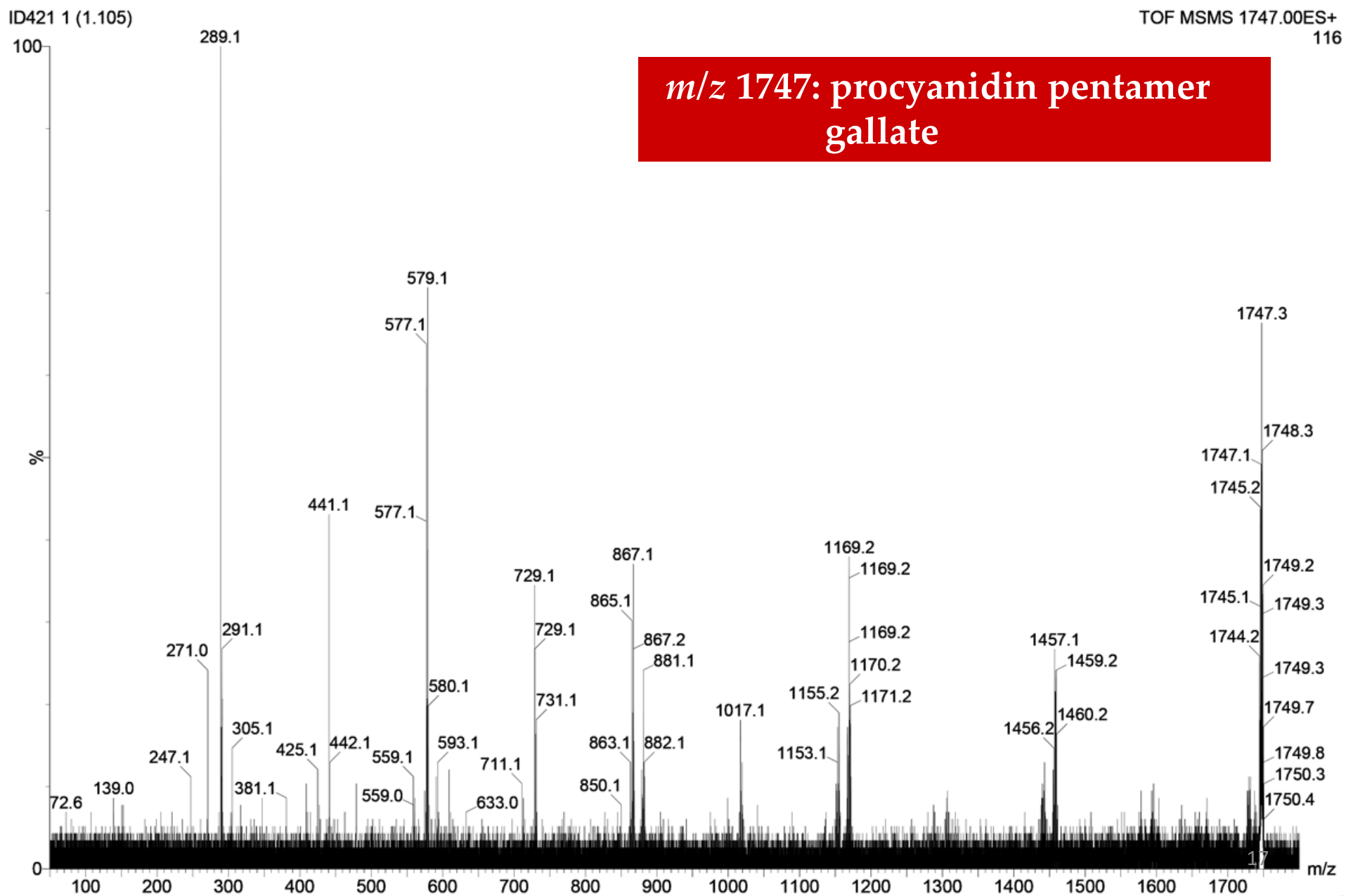
Supplementary Materials

Figure 15 - MS/MS spectrum at m/z 1595 acquired in positive ion mode



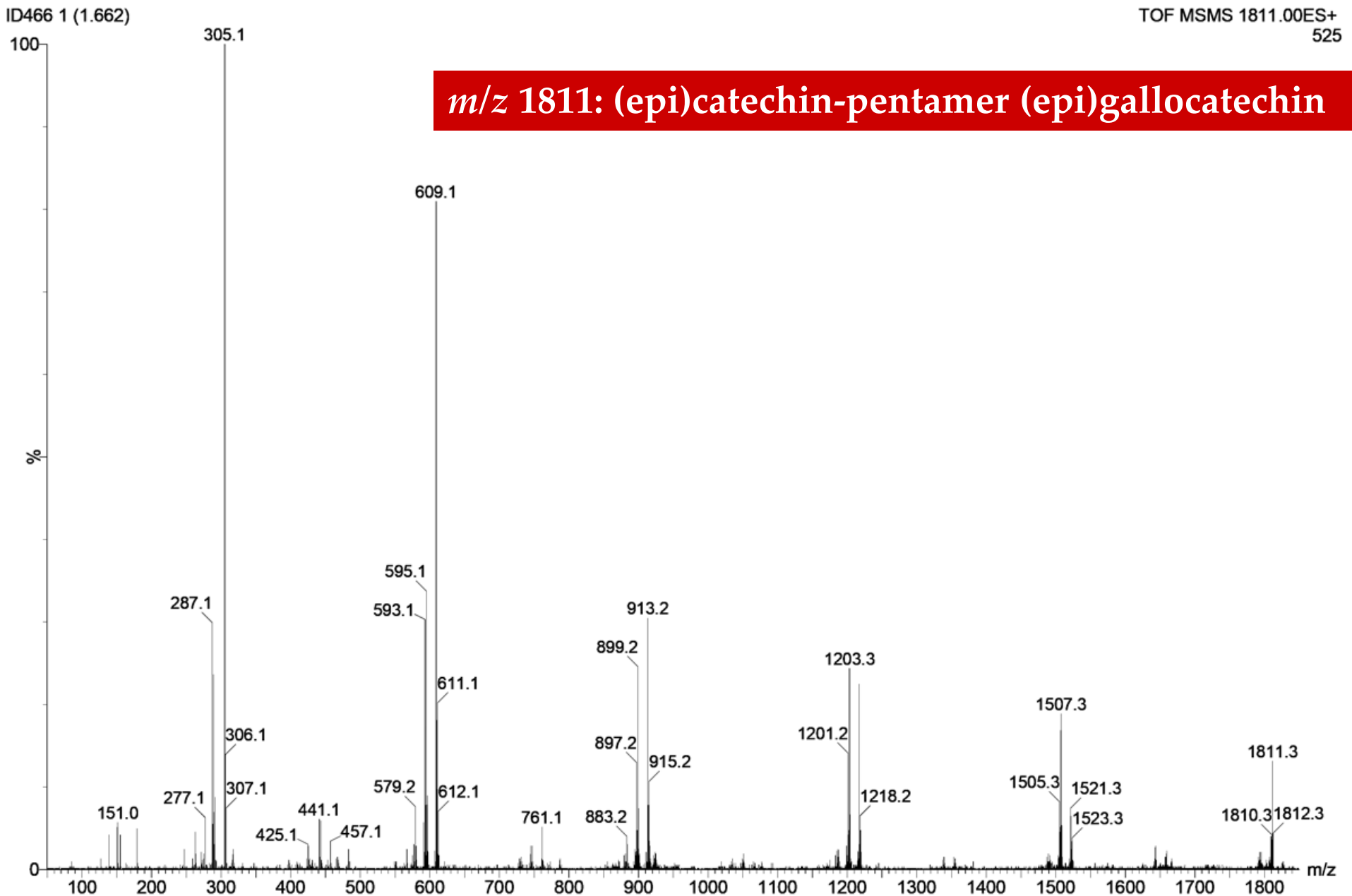
Supplementary Materials

Figure 16 - MS/MS spectrum at m/z 1747 acquired in positive ion mode



Supplementary Materials

Figure 17 - MS/MS spectrum at m/z 1811 acquired in positive mode



Supplementary Materials

Figure 18 - MALDI-TOF-MS in linear positive ion mode of wastewater samples from treatment with: A) tap water containing *L. pentosus*; B) tap water; C) recycled wastewater from a previous curing treatment with tap water.

