

## Supporting Information

**Heteroleptic La<sup>III</sup> Anilate/Dicarboxylate Based Neutral 3D-Coordination Polymers**

*Olesya Yu. Trofimova, Arina V. Maleeva, Irina V. Ershova, Anton V. Cherkasov, Georgy K.*

*Fukin, Rinat R. Aysin, Konstantin A. Kovalenko and Alexandr V. Piskunov*

**Table of Contents**

Fig. S1. Pore size distribution curves for compounds <b>1</b> . .....	2
Fig. S2. TG curve for <b>4</b> . .....	2
Fig. S3. PXRD patterns for <b>1-4</b> . .....	3
Fig. S4. The molecular structure of the binuclear unit in <b>2</b> . .....	4
Shape analysis for compounds <b>1-3</b> . .....	5
Shape analysis for compound <b>4</b> . .....	6

Fig. S1. Pore size distribution curves for compounds **1**.

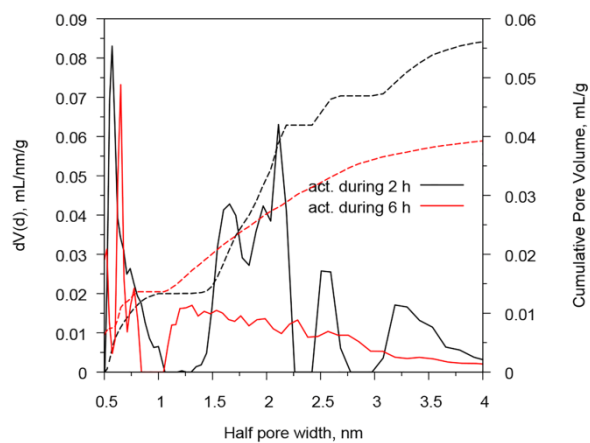


Fig. S2. TG curve for **4**.

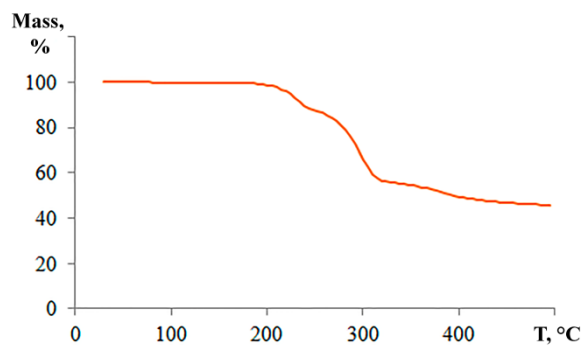


Fig. S3. PXRD patterns for **1-4**.

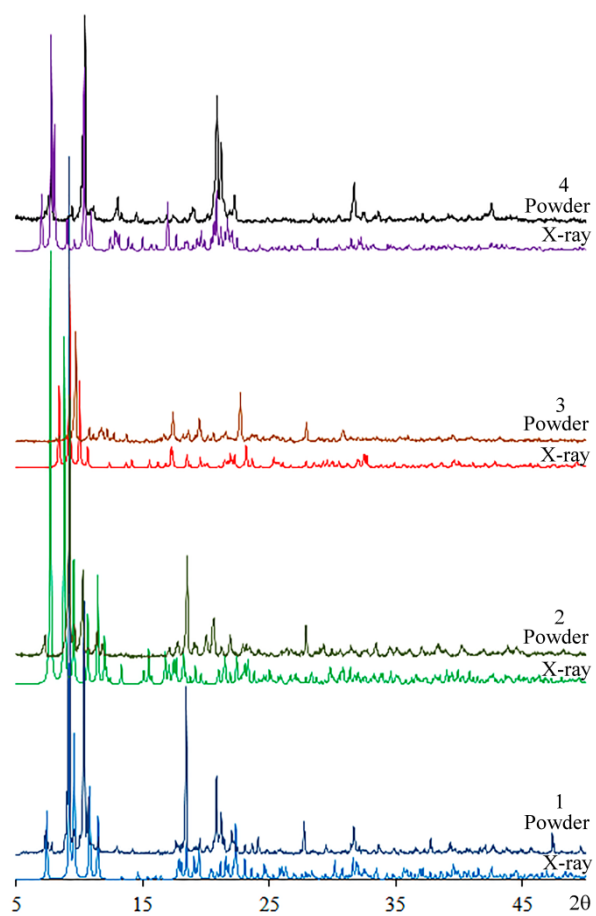
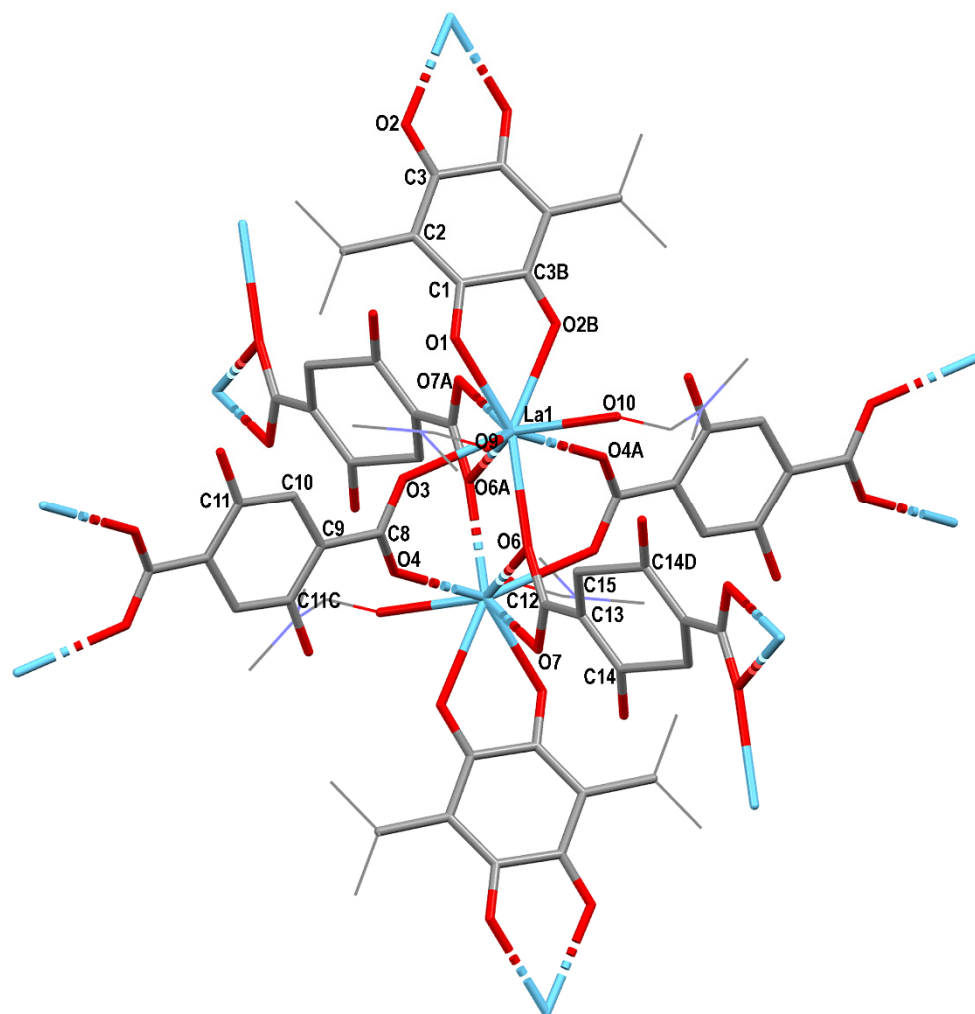


Fig. S4. The molecular structure of the binuclear unit in 2.



## Shape analysis for compounds 1-3.

-----  
 S H A P E v2.1 Continuous Shape Measures calculation  
 (c) 2013 Electronic Structure Group, Universitat de Barcelona  
 Contact: llunell@ub.edu  
 -----

### DBCLapQ

EP-9	1 D9h	Enneagon
OPY-9	2 C8v	Octagonal pyramid
HBPY-9	3 D7h	Heptagonal bipyramid
JTC-9	4 C3v	Johnson triangular cupola J3
JCCU-9	5 C4v	Capped cube J8
CCU-9	6 C4v	Spherical-relaxed capped cube
JCSAPR-9	7 C4v	Capped square antiprism J10
CSAPR-9	8 C4v	Spherical capped square antiprism
JTCTPR-9	9 D3h	Tricapped trigonal prism J51
TCTPR-9	10 D3h	Spherical tricapped trigonal prism
JTDIC-9	11 C3v	Tridiminished icosahedron J63
HH-9	12 C2v	Hula-hoop
MFF-9	13 Cs	Muffin

Structure [ML9 ]	EP-9	OPY-9	HBPY-9	JTC-9	JCCU-9	CCU-9	JCSAPR-9	CSAPR-9	JTCTPR-9	TCTPR-9	JTDIC-9	HH-9	MFF-9
compound 1	36.538,	20.629,	18.934,	16.676,	11.332,	9.185	2.553,	1.384,	4.001,	1.711,	11.116,	10.683,	1.500
compound 2	34.031,	22.947,	18.059,	15.162,	10.639,	10.175,	2.165,	1.730,	2.814,	2.453,	13.927,	10.608,	0.926
compound 3	35.074,	22.529,	17.945,	15.087,	10.352,	9.628,	2.101,	1.620,	3.670,	2.470,	13.697,	8.659,	0.868

## Shape analysis for compound 4.

-----  
 S H A P E v2.1 Continuous Shape Measures calculation  
 (c) 2013 Electronic Structure Group, Universitat de Barcelona  
 Contact: llunell@ub.edu  
 -----

pQ3La2

OP-8	1 D8h	Octagon
HPY-8	2 C7v	Heptagonal pyramid
HBPY-8	3 D6h	Hexagonal bipyramid
CU-8	4 Oh	Cube
SAPR-8	5 D4d	Square antiprism
TDD-8	6 D2d	Triangular dodecahedron
JGBF-8	7 D2d	Johnson gyrobifastigium J26
JETBPY-8	8 D3h	Johnson elongated triangular bipyramid J14
JBTPR-8	9 C2v	Biaugmented trigonal prism J50
BTPR-8	10 C2v	Biaugmented trigonal prism
JSD-8	11 D2d	Snub diphonoid J84
TT-8	12 Td	Triakis tetrahedron
ETBPY-8	13 D3h	Elongated trigonal bipyramid

Structure [ML8]	OP-8	HPY-8	HBPY-8	CU-8	SAPR-8	TDD-8	JGBF-8	JETBPY-8	JBTPR-8	BTPR-8	JSD-8	TT-8	ETBPY-8
<b>compound 4</b>	33.495,	22.913,	15.109,	12.177,	3.465,	1.148,	13.268,	29.184,	3.397,	2.575,	3.490,	12.999,	23.339