

Screening of Specific and Common pathways in Breast Cancer Cell Lines MCF-7 and MDA-MB-231 Treated with Chlorophyllides Composites

Supplementary

Figure S1

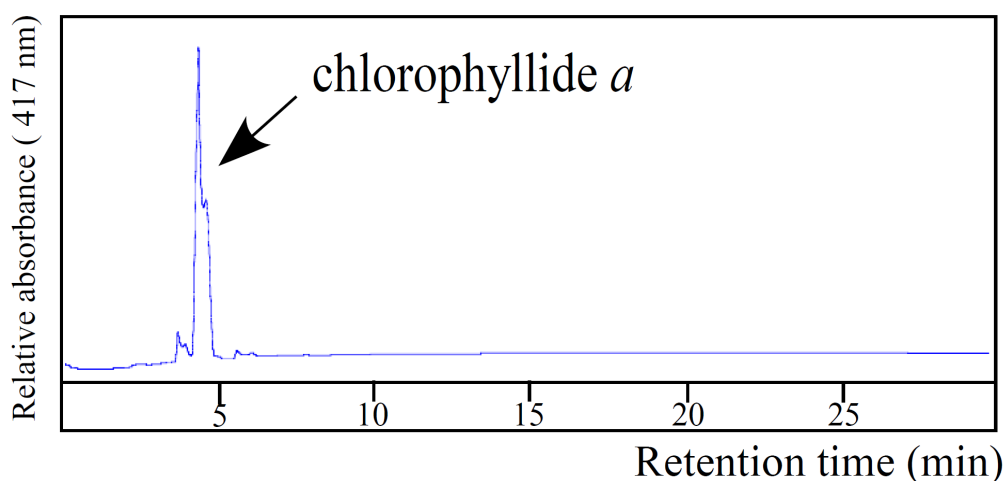


Figure S1. HPLC analysis profiles of chlorophyllides composites. The chlorophyllides composites were separated by HPLC and detected at 417 nm from 0 to 80 min. Chlorophyllide *a* was detected within 5 min. Chlorophyllide *a* are > 95% pure by HPLC analysis. The HPLC traces is similar to that from our previous studies^{37,38}.