

Packed-fiber Solid Phase Extraction Coupled with HPLC-MS/MS for Rapid Determination of Lipid Oxidative Damage Biomarker 8-iso-prostaglandin F_{2α} in Urine

Ying Sun ¹, Yan Yan ², Xuejun Kang ^{1,2*}

¹ Key Laboratory of Child Development and Learning Science, Ministry of Education, School of Biological Science & Medical Engineering, Southeast University, Nanjing, 210096, China; 230189182@seu.edu.cn;

² Key Laboratory of Environmental Medicine and Engineering (Ministry of Education), School of Public Health, Southeast University, Nanjing 210096, China; 230198875@seu.edu.cn

* Correspondence: 101006214@seu.edu.cn; Tel.: +86-025-83795664-1011.

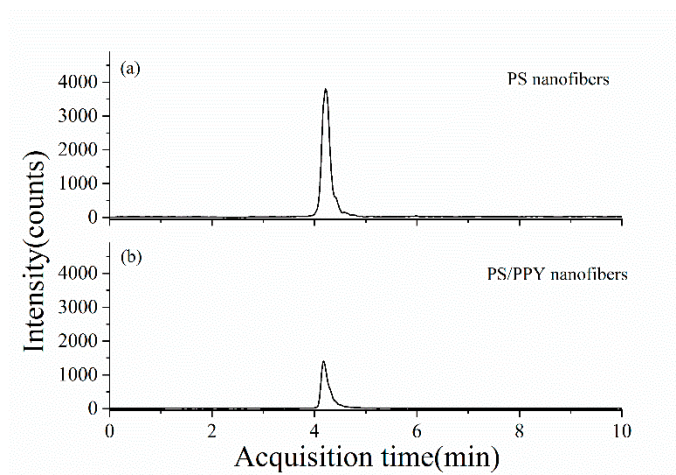


Figure S1. Representative chromatograms of PFSPE condition optimization. 1 mL 1 ng/mL standard solution processed with (a) PS nanofibers cartridge and (b) PS/PPY cartridge.

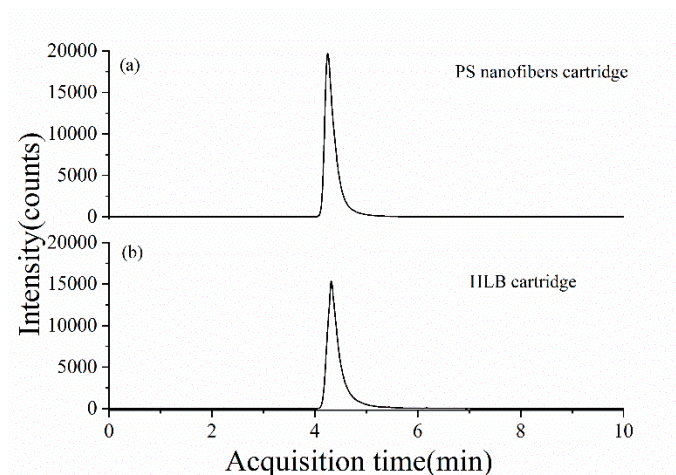


Figure S2. Representative chromatograms of 1 mL 5 ng/mL standard solution processed with (a) PS nanofibers cartridge and (b) HLB cartridge.

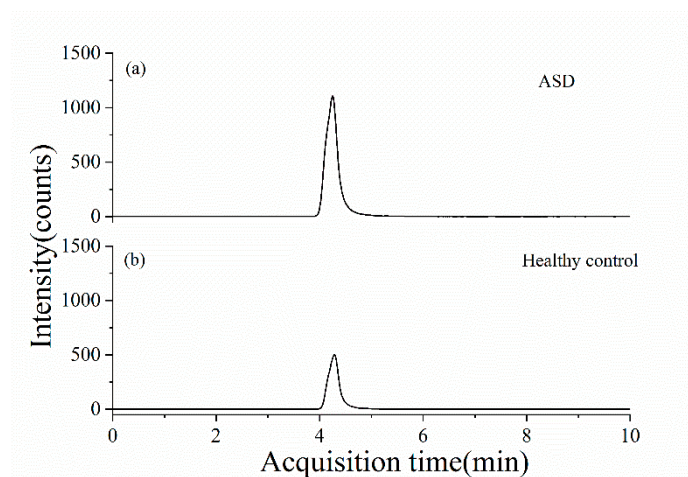


Figure S3. Representative chromatograms of urine of (a) ASD children and (b) healthy control.

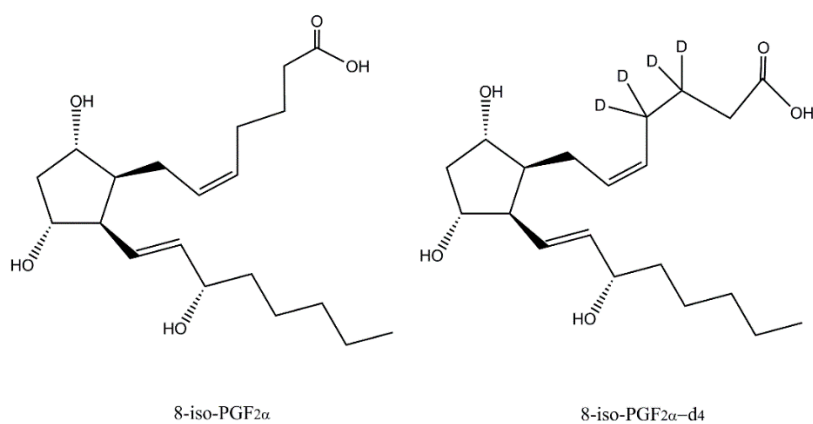


Figure S4. Structures of 8-iso-PGF_{2α} and 8-iso-PGF_{2α}-d₄.

Table S1. The creatinine normalized 8-iso-PGF_{2α} concentrations of ASD children and healthy controls.

Group	Concentration (ng/mg Cr)					
	1	2	3	4	5	6
ASD	0.17	0.25	0.34	0.37	0.40	0.21
Control	0.11	0.09	0.13	0.11	0.16	0.17