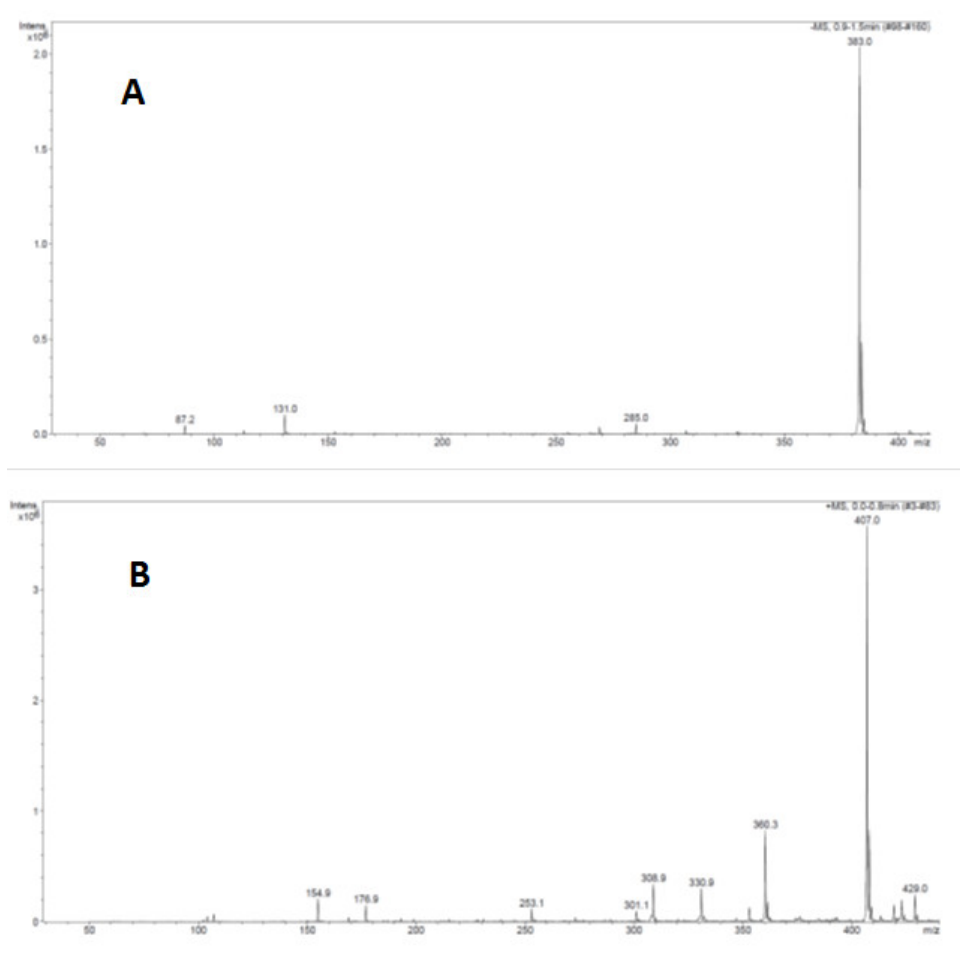


**Figure S1. TLC of synthesis steps of (3)** A: Aloe-emodin (2) ( $R_f=0.21$ ), Reaction: reaction mixture after 8 hours, G: monoglutaril derivative (3) ( $R_f=0.12$ ).



**Figure S2.** Mass spectra (ESI detector) of compound **3**: negative ions (**A**); positive ions (**B**).