

Supporting Information

GC/MS analyses of the biocatalytic esterification and amidation of palmitic acid (used for optimization) and of the ethanol amides of oleic and linoleic acids prepared as standards

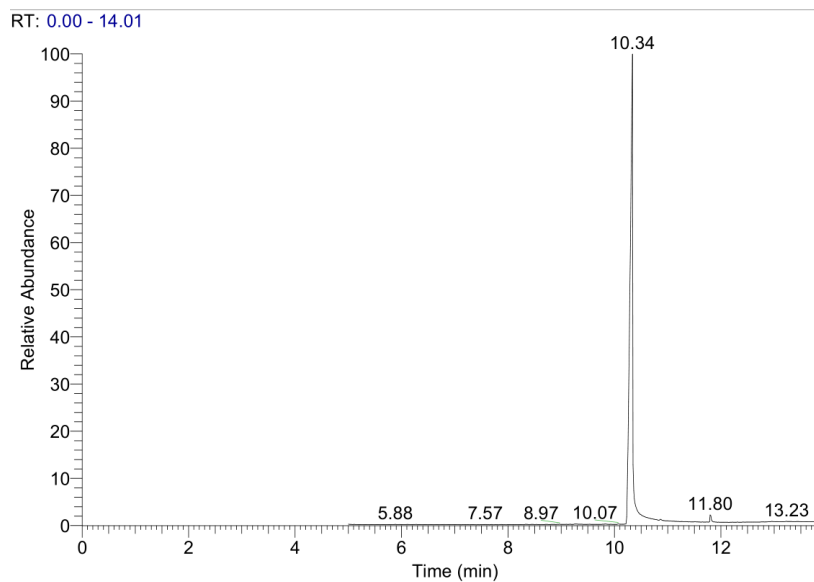


Figure S1. Palmitic acid

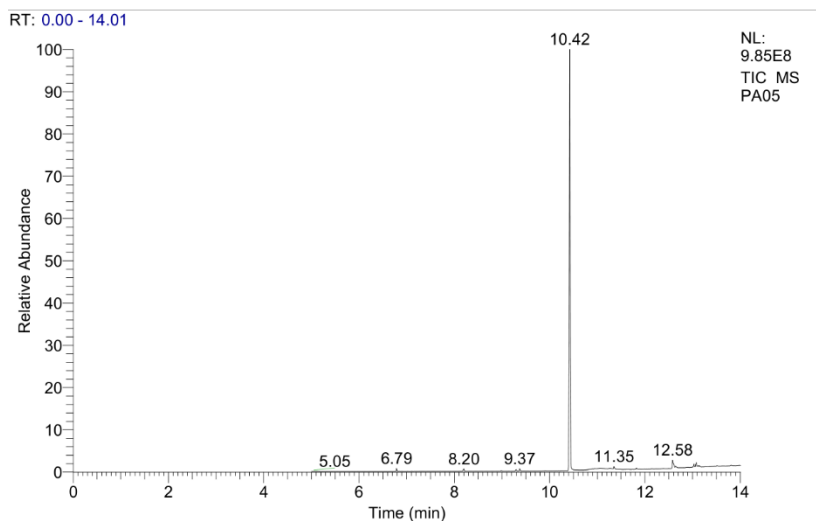


Figure S2. Palmitic acid methyl ester

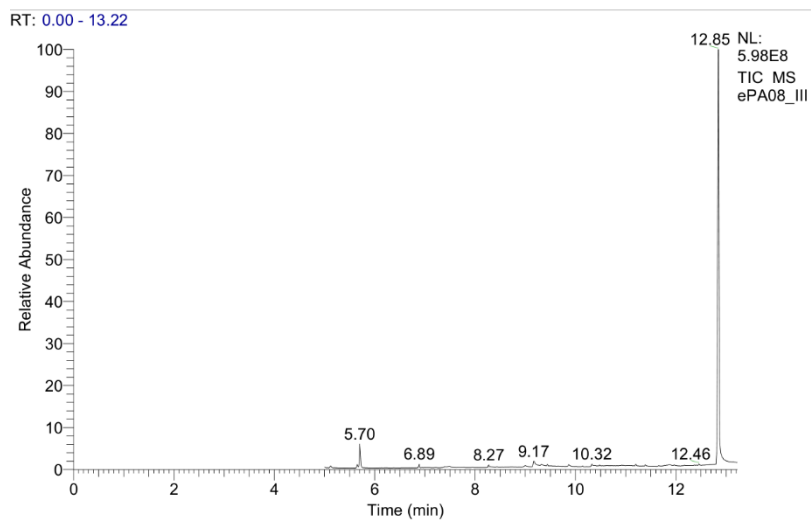


Figure S3. Palmitoyl ethanolamide

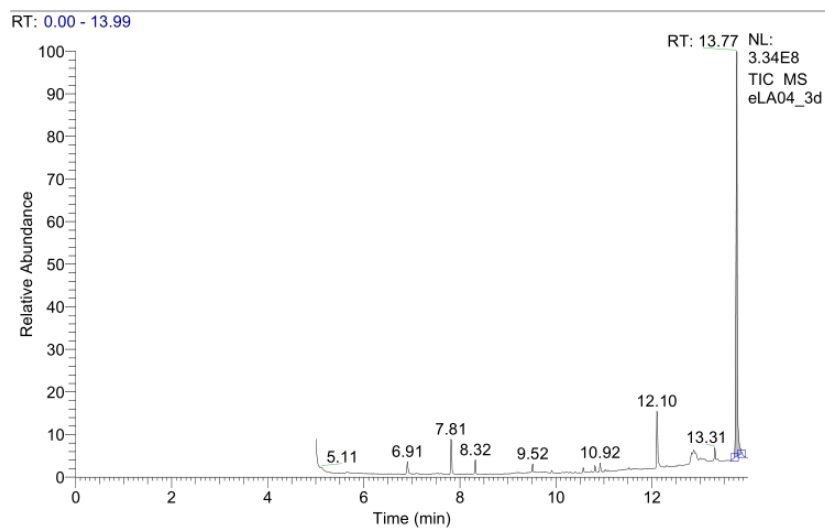


Figure S4. Linoleyl ethanolamide

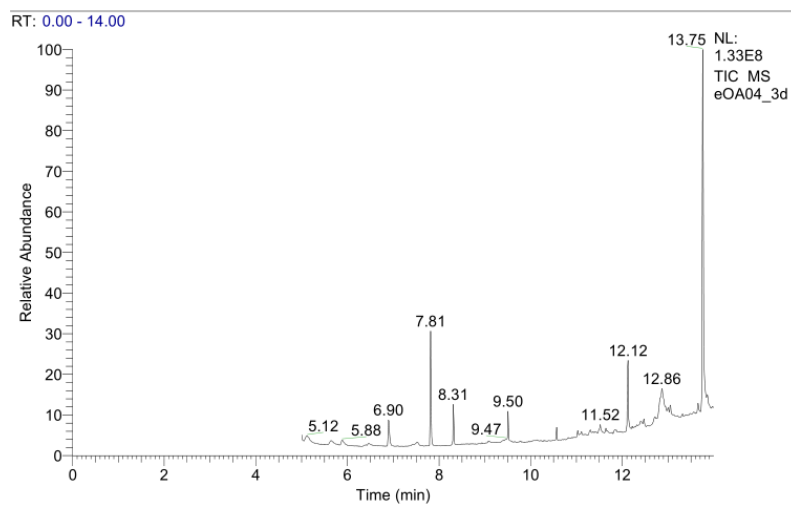


Figure S5. Oleyl ethanolamide