


## Article

# Impact of *TMPRSS2* Expression, Mutation Prognostics, and Small Molecule (CD, AD, TQ, and TQFL12) Inhibition on Pan-Cancer Tumors and Susceptibility to SARS-CoV-2

Jiewen Fu <sup>1,†</sup>, Shuguang Liu <sup>1,†</sup>, Qi Tan <sup>1,†</sup>, Zhiying Liu <sup>1</sup>, Jie Qian <sup>1</sup>, Ting Li <sup>1</sup>, Jiaman Du <sup>1</sup>, Binghui Song <sup>1</sup>, Dabing Li <sup>1,2</sup>, Lianmei Zhang <sup>3</sup>, Jiayue He <sup>1</sup>, Kan Guo <sup>1</sup>, Baixu Zhou <sup>1,4</sup>, Hanchun Chen <sup>5</sup>, Shangyi Fu <sup>6</sup>, Xiaoyan Liu <sup>1</sup>, Jingliang Cheng <sup>1</sup>, Tao He <sup>1,7,\*</sup> and Junjiang Fu <sup>1,\*</sup> 

<sup>1</sup> Key Laboratory of Epigenetics and Oncology, the Research Center for Preclinical Medicine, Southwest Medical University, Luzhou 646000, China

<sup>2</sup> Basic Medical School, Southwest Medical University, Luzhou 646000, China

<sup>3</sup> Department of Pathology, The Affiliated Huaian No. 1 People's Hospital of Nanjing Medical University, Huai'an 223300, China

<sup>4</sup> Department of Gynecology and Obstetrics, Guangdong Women and Children Hospital, Guangzhou 511400, China

<sup>5</sup> Department of Biochemistry, School of Life Sciences, Central South University, Changsha 410013, China

<sup>6</sup> School of Medicine, Baylor College of Medicine, Houston, TX 77030, USA

<sup>7</sup> Institute for Cancer Medicine, Basic Medical School, Southwest Medical University, Luzhou 646000, China

\* Correspondence: hetao198@swmu.edu.cn (T.H.); fujunjiang@swmu.edu.cn (J.F.); Tel./Fax: +86-830-3160283 (J.F.)

† These authors contributed equally to this paper.



**Citation:** Fu, J.; Liu, S.; Tan, Q.; Liu, Z.; Qian, J.; Li, T.; Du, J.; Song, B.; Li, D.; Zhang, L.; et al. Impact of *TMPRSS2* Expression, Mutation Prognostics, and Small Molecule (CD, AD, TQ, and TQFL12) Inhibition on Pan-Cancer Tumors and Susceptibility to SARS-CoV-2. *Molecules* **2022**, *27*, 7413. <https://doi.org/10.3390/molecules27217413>

Academic Editor: Claudiu T. Supuran

Received: 14 September 2022

Accepted: 24 October 2022

Published: 1 November 2022

**Publisher's Note:** MDPI stays neutral with regard to jurisdictional claims in published maps and institutional affiliations.



**Copyright:** © 2022 by the authors. Licensee MDPI, Basel, Switzerland. This article is an open access article distributed under the terms and conditions of the Creative Commons Attribution (CC BY) license (<https://creativecommons.org/licenses/by/4.0/>).

**Abstract:** As a cellular protease, transmembrane serine protease 2 (*TMPRSS2*) plays roles in various physiological and pathological processes, including cancer and viral entry, such as severe acute respiratory syndrome coronavirus 2 (SARS-CoV-2). Herein, we conducted expression, mutation, and prognostic analyses for the *TMPRSS2* gene in pan-cancers as well as in COVID-19-infected lung tissues. The results indicate that *TMPRSS2* expression was highest in prostate cancer. A high expression of *TMPRSS2* was significantly associated with a short overall survival in breast invasive carcinoma (BRCA), sarcoma (SARC), and uveal melanoma (UVM), while a low expression of *TMPRSS2* was significantly associated with a short overall survival in lung adenocarcinoma (LUAD), demonstrating *TMPRSS2* roles in cancer patient susceptibility and severity. Additionally, *TMPRSS2* expression in COVID-19-infected lung tissues was significantly reduced compared to healthy lung tissues, indicating that a low *TMPRSS2* expression may result in COVID-19 severity and death. Importantly, *TMPRSS2* mutation frequency was significantly higher in prostate adenocarcinoma (PRAD), and the mutant *TMPRSS2* pan-cancer group was significantly associated with long overall, progression-free, disease-specific, and disease-free survival rates compared to the wild-type (WT) *TMPRSS2* pan-cancer group, demonstrating loss of functional roles due to mutation. Cancer cell lines were treated with small molecules, including cordycepin (CD), adenosine (AD), thymoquinone (TQ), and TQFL12, to mediate *TMPRSS2* expression. Notably, CD, AD, TQ, and TQFL12 inhibited *TMPRSS2* expression in cancer cell lines, including the PC3 prostate cancer cell line, implying a therapeutic role for preventing COVID-19 in cancer patients. Together, these findings are the first to demonstrate that small molecules, such as CD, AD, TQ, and TQFL12, inhibit *TMPRSS2* expression, providing novel therapeutic strategies for preventing COVID-19 and cancers.

**Keywords:** *TMPRSS2* gene; SARS-CoV-2; prostate adenocarcinoma; susceptibility; cordycepin (CD); adenosine (AD); thymoquinone (TQ); TQFL12

## 1. Introduction

Transmembrane serine protease 2 (TMPRSS2, OMIM: 602060) encodes a 492 amino acid protein with a molecular weight of 53,859 Da, which contains a functional serine protease domain [1]. TMPRSS2 has been reported to be involved in various pathological and physiological processes [2–4]. Recurrent fusions at the *TMPRSS2* 5' UTR (untranslated region) to ETV1 (ETS variant transcription factor 1) or ERG (ETS-related gene) lead to outlier expression and drive progression of prostate cancer [5].

Serine proteases proteolytically cleave and activate viral S proteins (spike glycoproteins), thereby facilitating fusion of the virus with the cell membrane. Two independent mechanisms are involved in human severe acute respiratory syndrome coronavirus (SARS-CoV) infection entering host cells: (1) proteolytic cleavage of angiotensin converting enzyme 2 (ACE2), which promotes viral entry; and (2) cleavage of coronavirus S protein, which activates itself. Proteolytic cleavage and activation of the S protein is required for infection of human coronavirus 229E (HCoV-229E) and human coronavirus EMC (HCoV-EMC), as well as the F0 fusion glycoprotein of Sendai virus (SeV), human metapneumovirus (HMPV), and human parainfluenza viruses (HPIVs) 1, 2, 3, 4a, and 4b.

As a cellular serine protease, TMPRSS2 is a genetic risk factor [6,7] as it facilitates viral entry, including HCoV-229E, HMPV, Middle East respiratory syndrome coronavirus (MERS-CoV), and SARS-CoV, through cleaving and activating viral envelope glycoproteins, thereby facilitating the fusion of virus with cell membranes, or through proteolytically cleaving of ACE2, which promotes viral uptake in a cathepsin L (CTSL)-independent manner [8–11].

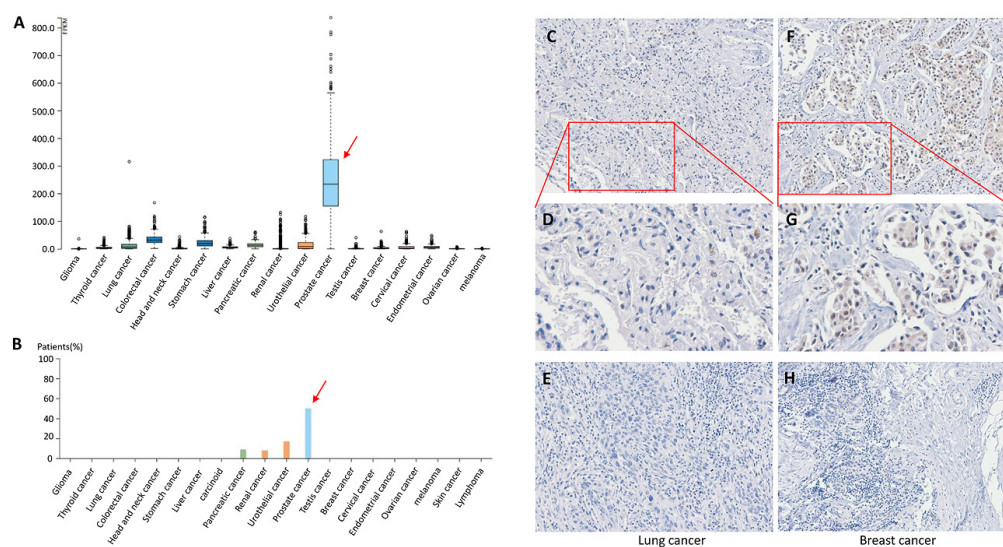
Hoffmann et al. first demonstrated that the SARS-CoV-2 S protein is primed via the TMPRSS2 protease, indicating that TMPRSS2 inhibitors may block viral invasion [9,12], SARS-CoV-2 entry, and coronavirus disease 2019 (COVID-19) outcomes [13]. These findings suggest that the inhibition of TMPRSS2 expression may protect against cancer progress as well as SARS-CoV-2 invasion. Variants in the *TMPRSS2* gene seem to regulate TMPRSS2 expression and affect SARS-CoV-2 infection [14–16]. Gene mutations in cancer could cause gene expression, malignancy, prognostics, recurrence, and therapeutic resistance of patients. TMPRSS2 expression, mutation, and prognostics in pan-cancers are unclear. Some potential inhibitors of TMPRSS2 have been revealed to possibly defeat SARS-CoV-2 entry [17–19]. It is unknown whether small molecules, such as cordycepin (CD), adenosine (AD), thymoquinone (TQ), and TQFL12, inhibit TMPRSS2 expression.

Herein, we conducted expression, mutation, and prognostic analyses for the *TMPRSS2* gene in pan-cancers as well as in COVID-19-infected lung tissues. Cancer cell lines were treated with the small molecules CD, AD, TQ, and TQFL12 to inhibit TMPRSS2 expression in cancer cell lines.

## 2. Results

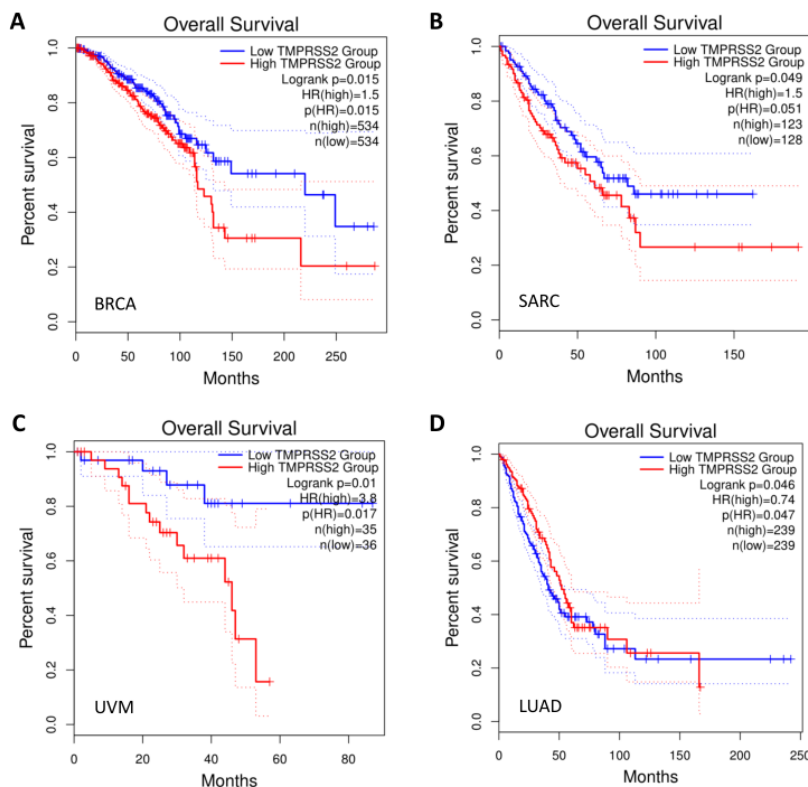
### 2.1. *TMPRSS2* Expressions and Prognostics in Pan-Cancers

Previous bioinformatics analysis of *TMPRSS2* expression profiles in 32 different tumor tissues has indicated that *TMPRSS2* is significantly upregulated in six cancer tissues, including prostate adenocarcinoma (PRAD), and significantly downregulated in six cancer tissues compared to corresponding normal tissues [20]. We further analyzed *TMPRSS2* mRNA expression in pan-cancers and found that *TMPRSS2* mRNA expression was highest in prostate cancer with 234.4 fragments per kilobase of exon model per million mapped fragments (FPKM) (Figure 1A). TMPRSS2 protein expression was highest in prostate cancer followed by urothelial cancer, renal cancer, and pancreatic cancer, and TMPRSS2 was expressed at low levels in lung cancer; TMPRSS2 expression was undetected in the remaining cancer tissue types, including breast cancer (Figure 1B). Moreover, immunohistochemistry (IHC) showed weak to moderate membranous and/or granular cytoplasmic immunoreactivity in lung and breast cancer tissues (Figure 1C–H).



**Figure 1.** TMPRSS2 expression in pan-cancers. (A) *TMPRSS2* mRNA expression in pan-cancers. (B) TMPRSS2 protein expression in pan-cancers. (C,D) IHC of TMPRSS2 in lung cancer tissues. (E) IHC of TMPRSS2 in lung cancer tissues. (F,G) IHC of TMPRSS2 in breast cancer tissues. (H) IHC of TMPRSS2 in breast cancer tissues. (D,G) Enlarged images of (C,F), respectively.

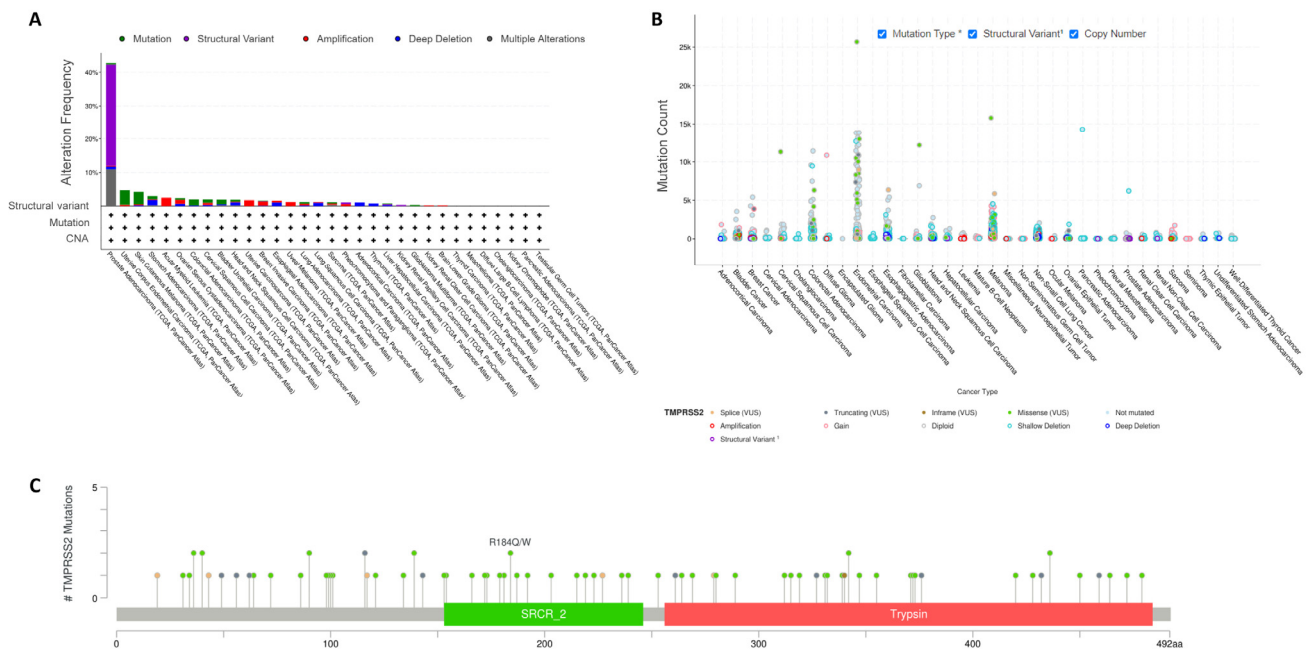
We next conducted survival analysis in the pan-cancers. A high expression of TMPRSS2 was significantly associated with a short overall survival in breast invasive carcinoma (BRCA), sarcoma (SARC), and uveal melanoma (UVM), as well as with a long overall survival in lung adenocarcinoma (LUAD) (Figure 2A–D).



**Figure 2.** Overall survival of cancer patients according to TMPRSS2 expression. (A) BRCA. (B) SARC. (C) UVM. (D) LUAD. BRCA: breast invasive carcinoma; SARC: sarcoma; UVM: uveal melanoma; LUAD: lung adenocarcinoma.

### 2.2. *TMPRSS2* Mutations and Prognostics in Pan-Cancers

Mutation analysis of the pan-cancers demonstrated that the mutation frequency was significantly high in PRAD (42.71%) and low in uterine corpus endometrial carcinoma (UCES) (4.73%), and 7 of the 32 types of cancer had no mutations (Figure 3A). The plots for the *TMPRSS2* mutation types are shown in Figure 3B, and an overview of mutations in *TMPRSS2* is shown in Figure 3C. Different types of *TMPRSS2* mutations were found, and missense mutations were the dominant mutation type.



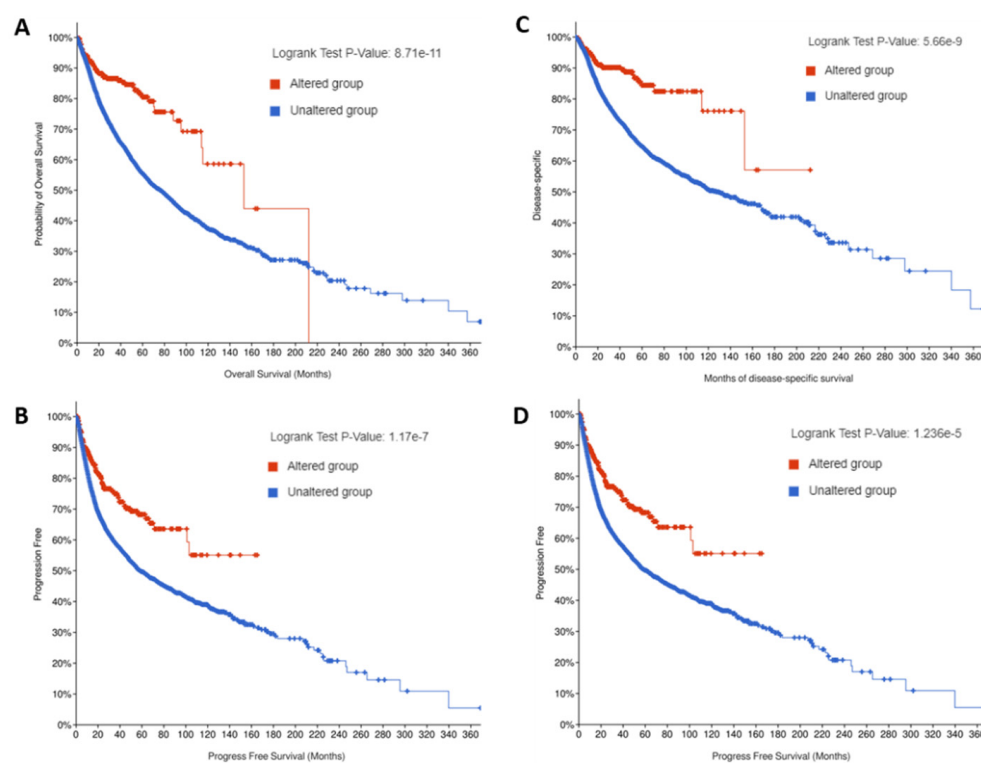
**Figure 3.** *TMPRSS2* mutation in pan-cancers. (A) Cancer type summary for *TMPRSS2* mutations, including 32 categories (cancer study) based on filtering. (B) Plots for *TMPRSS2* mutation types. (C) Overview of mutations in *TMPRSS2*. CNA: Copy number alterations (CNA) data.

Further survival analysis was conducted with and without *TMPRSS2* mutations in the pan-cancers, which demonstrated that the mutated *TMPRSS2* group was significantly associated with long overall (Figure 4A), progression-free (Figure 4B), disease-specific (Figure 4C), and disease-free (Figure 4D) survival rates compared to the wild-type (WT) *TMPRSS2* group (Table 1). Thus, these findings indicate that *TMPRSS2* mutations may be a prognostic marker for long survival rates in pan-cancers.

**Table 1.** Survival of cancer patients with *TMPRSS2* mutations.

Survival Type	No. Patients	<i>p</i> -Value	<i>q</i> -Value
Overall	10,803	$8.71 \times 10^{-11}$	$3.49 \times 10^{-10}$
Disease-specific	10,258	$5.66 \times 10^{-9}$	$1.13 \times 10^{-8}$
Progression-free	10,613	$1.17 \times 10^{-7}$	$1.56 \times 10^{-7}$
Disease-free	5383	$1.24 \times 10^{-5}$	$1.24 \times 10^{-5}$





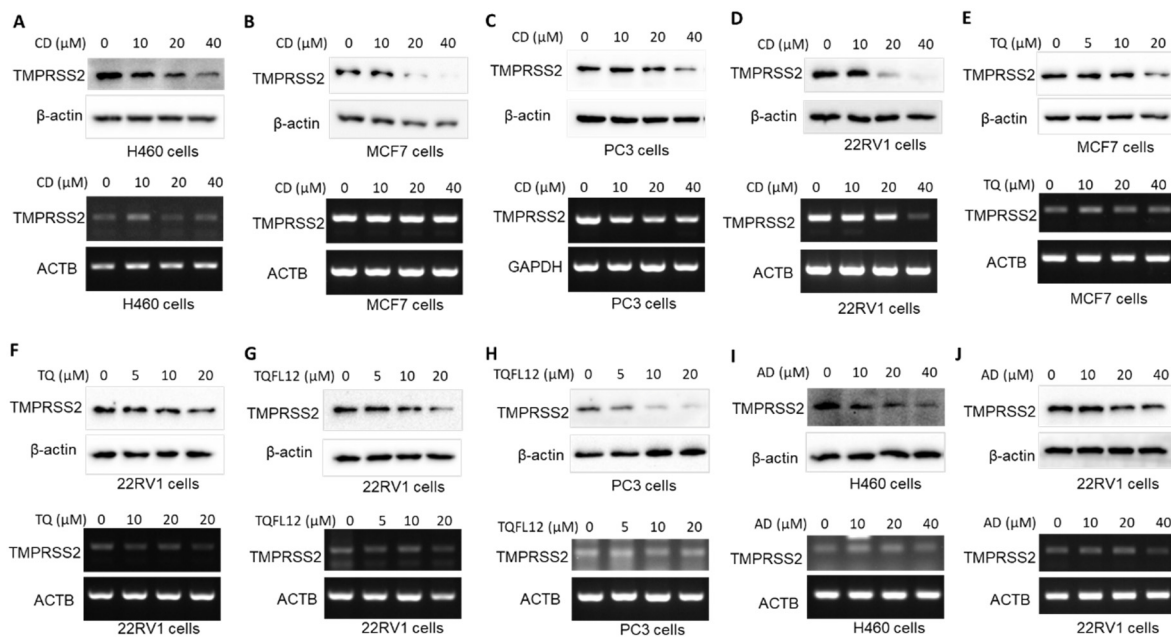
**Figure 4.** Prognostics for *TMPRSS2* mutation in pan-cancers. Data for overall (A), progression-free (B), disease-specific (C), and disease-free (D) survival in the mutated group (red line) and WT group (blue line). Unaltered group: wild-type (WT) group.

### 2.3. CD, AD, TQ, and TQFL12 Inhibit *TMPRSS2* Expression in Cancer Cell Lines

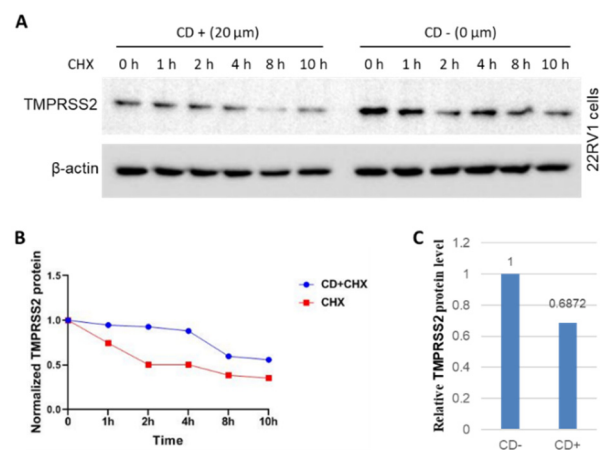
Molecular docking analysis has predicted that small molecules have functional inhibitory effects on *TMPRSS2* [21]. Thus, we investigated whether small molecules (CD, AD, TQ, and TQFL12) regulate *TMPRSS2* expression. The results indicate that CD inhibited *TMPRSS2* expression in H460 (Figure 5A), MCF7 (Figure 5B), PC3 (Figure 5C), and 22RV1 (Figure 5D) cells at the protein level in a dose-dependent manner. Moreover, TQ inhibited *TMPRSS2* expression in MCF7 cells (Figure 5E) and 22RV1 cells (Figure 5F) at the protein level in a dose-dependent manner, and TQFL12 inhibited *TMPRSS2* expression in 22RV1 (Figure 5G) and PC3 cells (Figure 5H) at the protein level in a dose-dependent manner. Further, AD inhibited *TMPRSS2* expression in H460 (Figure 5I) and 22RV1 cells (Figure 5J) at the protein level in a dose-dependent manner. However, the small molecules did not significantly change *TMPRSS2* mRNA levels, except for CD treatment of 22RV1 cells.

### 2.4. Treatment with CD Inhibits the Translation and Promotes the Degradation of *TMPRSS2* Protein

We next investigated the protein stability of *TMPRSS2* protein using cycloheximide (CHX) treatment in the presence or absence of CD treatment in 22RV1 cancer cells. The results showed that CD treatment increased the protein stability of *TMPRSS2* compared to the control with an increase in the half-life from ~3 h to >8 h (Figure 6A,B). To further verify whether CD decreases the protein level of *TMPRSS2*, we quantitated *TMPRSS2* protein levels and found that CD treatment decreased the *TMPRSS2* protein levels by more than 30% (Figure 6C). Overall, these results indicate that CD treatment inhibits the translation and promotes the degradation of *TMPRSS2* protein.



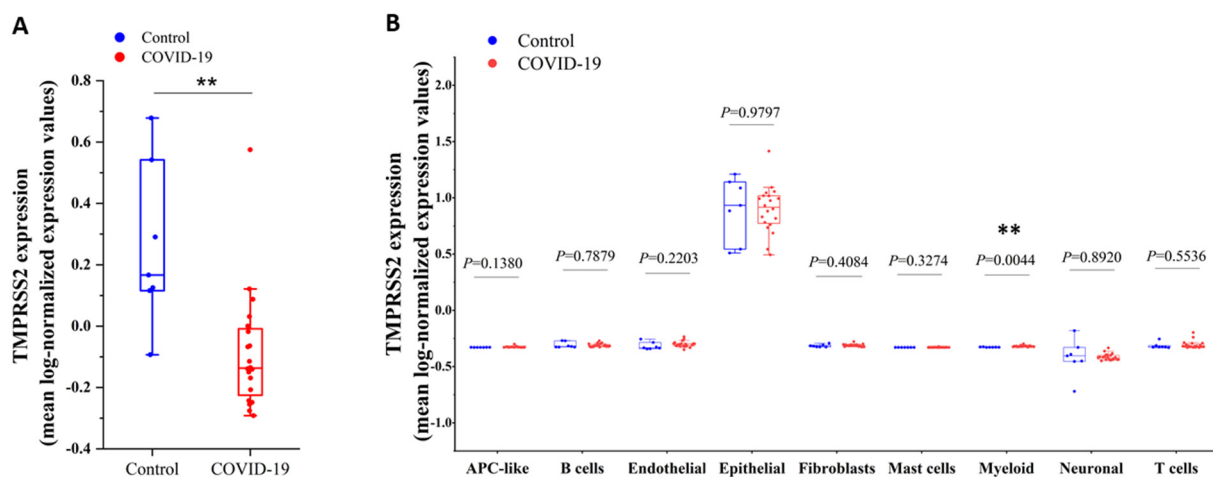
**Figure 5.** CD, TQ, TQFL12, and AD inhibit TMPRSS2 expression in various cancer cell lines. (A) CD inhibited TMPRSS2 expression in H460 cells. (B) CD inhibited TMPRSS2 expression in MCF7 cells. (C) CD inhibited TMPRSS2 expression in PC3 cells. (D) CD inhibited TMPRSS2 expression in 22RV1 cells. (E) TQ inhibited TMPRSS2 expression in MCF7 cells. (F) TQ inhibited TMPRSS2 expression in 22RV1 cells. (G) TQFL12 inhibited TMPRSS2 expression in 22RV1 cells. (H) TQFL12 inhibited TMPRSS2 expression in PC3 cells. (I) AD inhibited TMPRSS2 expression in H460 cells. (J) AD inhibited TMPRSS2 expression in 22RV1 cells.



**Figure 6.** Treatment with CD inhibits the translation and promotes the degradation of TMPRSS2 in 22RV1 cancer cells. (A) TMPRSS2 protein stability after CHX treatment with or without CD treatment. The left panel shows CD treatment, and the right panel shows without CD treatment. (B) Quantitative results from A. The red line shows CHX treatment only, and the blue line shows CHX + CD treatment. Please note that the amount of TMPRSS2 protein in CD+ treatments remained lower over the entire period than that in CD-. (C) Quantitative results' comparison of TMPRSS2 protein levels without and with CD treatments but without CHX treatments in Figure 6A. Left column shows without CD treatments (CD-), while right column shows with CD treatments (CD+). The final concentration of CHX was 40  $\mu\text{g}/\text{mL}$ . h, hour (s) of CHX treatment. In the left panel of Figure 5A, all the lanes were added CD for 1 h prior adding CHX treatments.

### 2.5. *TMPRSS2* Expression in COVID-19-Infected Lungs and Control Lungs

Because SARS-CoV infection downregulates *TMPRSS2* expression in cultured cells [22], we investigated the changes in *TMPRSS2* expression in COVID-19-infected lungs. By analyzing the single-cell RNA-sequencing dataset (GSE171524) of COVID-19-infected lungs and control lungs [23], the expression levels of *TMPRSS2* in COVID-19-infected lungs were significantly reduced compared to the control lungs (Figure 7A). By further analyzing different cell types, we found that the expression levels of *TMPRSS2* in SARS-CoV-2-infected lungs were reduced in epithelial cells but significantly increased in myeloid cells compared to control lungs (Figure 7B). Consistent with these results in Figure 7A, analysis of the GSE152075 dataset indicates that nasopharyngeal swabs of SARS-CoV-2-infected patients show significantly lower *TMPRSS2* expression in virus-infected individuals compared to healthy individuals [24]. Moreover, the expression levels of *TMPRSS2* were very high in epithelial cells of both SARS-CoV-2-infected lungs and control lungs (Figure 7B).



**Figure 7.** Expression of *TMPRSS2* in SARS-CoV-2-infected lungs and control lungs. (A) Expression of *TMPRSS2* in SARS-CoV-2-infected lungs and control lungs. (B) Expression of *TMPRSS2* in different cell types in SARS-CoV-2-infected lungs and control lungs. “\*\*\*”,  $p$  value < 0.01.

### 3. Discussion

Highly expressed viral entry factors may play critical roles in the invasion of SARS-CoV-2 [25–28]. A *TMPRSS2*-expressing cell line has been shown to have high susceptibility for SARS-CoV-2 invasion [29,30]. In the present study, we conducted expression, mutation, and prognostic analyses for the *TMPRSS2* gene in pan-cancers and in COVID-19-infected lung tissues. *TMPRSS2* expression was highest in prostate cancer followed by urothelial cancer, renal cancer, and pancreatic cancer. In addition, *TMPRSS2* expression was low in lung cancer, and was not detected in other cancer tissues, including breast cancer. IHC revealed weak to moderate membranous and/or granular cytoplasmic immunoreactivity in lung and breast cancer tissues, which was supported by a previous study reporting that prostate cancer patients have a high risk for SARS-CoV-2 infection compared to non-cancer patients [31]. A high expression of *TMPRSS2* was significantly associated with a short overall survival in BRCA, SARC, and UVM, while a low expression of *TMPRSS2* was significantly associated with a short overall survival in LUAD. These results demonstrate a role of *TMPRSS2* in SARS-CoV-2 invasion, cancer susceptibility, and cancer severity in patients with PRCA, BRCA, SARC, and UVM. We further analyzed *TMPRSS2* expression using a dataset containing COVID-19-infected lungs and control lungs, and we found that the levels of *TMPRSS2* in COVID-19-infected lungs were significantly reduced compared to the control lungs. Considering that a low expression of *TMPRSS2* is significantly associated with a short overall survival in LUAD, low *TMPRSS2* expression may result in severity and death of LUAD cancer patients infected with COVID-19 or SARS-CoV-2.

Mutation analysis of the pan-cancers revealed that the *TMPRSS2* mutation frequency was significantly higher in PRAD and that the mutated *TMPRSS2* group was significantly associated with long overall, progression-free, disease-specific, and disease-free survival compared to the WT *TMPRSS2* group, demonstrating a loss of function roles for *TMPRSS2* mutations as prognostic markers in pan-cancers. However, it remains unknown whether *TMPRSS2* mutation affects COVID-19 severity, thereby indicating the need for additional studies to understand the causation roles of *TMPRSS2* mutation in COVID-19.

Targeting SARS-CoV-2 entry factors, including *TMPRSS2*, may be a therapeutic strategy against COVID-19 [32–34]. Molecular docking analysis has predicted that small molecules have a functional inhibitory effect on *TMPRSS2* [21]. Many dietary flavonoids show promising multitarget activities against SARS-CoV-2 [35]. A small-molecule compound, N-0385, has recently been reported to act as a pan-SARS-CoV-2 prophylactic and therapeutic agent with *TMPRSS2* inhibitory activity [36]. Thus, the present study investigated whether small molecules (CD, AD, TQ, and TQFL12) regulate *TMPRSS2* expression. We found that CD inhibited *TMPRSS2* expression in H460, MCF7, MDA-MB-231, and PC3 cells. Moreover, we found that TQ inhibited *TMPRSS2* expression in MCF7 and 22RV1 cells and that TQFL12 inhibited *TMPRSS2* expression in PC3 and 22RV1 cells. Further, AD inhibited *TMPRSS2* expression in H460 and 22RV1 cells. Notably, AD is a natural nucleotide from an intermediate product of metabolism in the human body, and has been reported to play roles in COVID-19 pathogenesis and therapeutic opportunities [37]. Moreover, CD treatment inhibited the translation and promoted the degradation of *TMPRSS2*. CD, TQ, and TQFL12 have anti-cancer suppressive roles both in vitro and in vivo [38–41]. Natural product CD is a derivative (analog) from AD, while TQFL12 is a novel synthetic derivative from TQ [38,42]. Taken together, these results imply that CD, AD, TQ, and TQFL12 may have therapeutic roles in preventing COVID-19 and cancers.

## 4. Materials and Methods

### 4.1. Expression Analysis in Databases

The human *TMPRSS2* gene expression levels in cancers were evaluated in The Cancer Genome Atlas (TCGA) database (accessed on date for this link, e.g., <https://www.proteinatlas.org/ENSG00000184012-TMPRSS2/pathology>, accessed on 1 September 2022), and the correlation of *TMPRSS2* gene expression levels with cancer survival was evaluated by Gene Expression Profiling Interactive Analysis (GEPIA 2, <http://gepia2.cancer-pku.cn/#analysis>, accessed on 1 September 2022) [43–45]. Mutation and survival analyses for *TMPRSS2* in pan-cancers were performed using cBioPortal ([https://www.cbioportal.org/results/cancerTypesSummary?case\\_set\\_id=all&gene\\_list=TMPRSS2&cancer\\_study\\_list=5c8a7d55e4b046111fee2296](https://www.cbioportal.org/results/cancerTypesSummary?case_set_id=all&gene_list=TMPRSS2&cancer_study_list=5c8a7d55e4b046111fee2296), accessed on 1 September 2022) in TCGA [46,47].

### 4.2. Reagents, Antibodies, and Cell Lines

CD and TQ have been previously described [48], and TQFL12 is a new synthetic TQ-derivative [38]. AD was purchased from Macklin Inc. (Shanghai, China, A6218-25 g). The *TMPRSS2* antibody for Western blotting and immunohistochemistry (IHC) was purchased from Sigma-Aldrich (cat #: HPA035787, Burlington, MA, USA). The indicated cancer cell lines and culture conditions have been previously described [47,48].

### 4.3. Immunohistochemistry (IHC)

The IHC protocol has been previously described [47,48]. In brief, formalin-fixed paraffin-embedded tissues from Chinese breast cancer and lung cancer patients were subjected to antibody staining with the *TMPRSS2* antibody (1:100 dilution) for IHC. Informed consent forms were obtained for the cancer patient tissues [47].

### 4.4. Western Blotting

The PC3 and 22RV1 prostate cancer cell lines, the H460 lung cancer cell line, and the MCF7 breast cancer cell line were utilized in the present study. Western blotting for *TMPRSS2*



was performed using cells treated with or without CD, AD (0, 10, 20, and 40  $\mu\text{m}$ ), TQ, or TQFL12 (0, 5, 10, and 20  $\mu\text{m}$ ) for 24 h.  $\beta$ -actin antibodies were used as the internal controls. Assays for cycloheximide (CHX)-based protein stability were performed as previously described [49]. The 22RV1 cells were treated with and without CD and with indicated CHX, followed by Western blotting. All experiments were repeated three times.

#### 4.5. Semi-Quantitative RT-PCR for TMPRSS2

The semi-quantitative RT-PCR assays were conducted using the above-described treated cancer cells. The following primers for RT-PCR were used: RT-TMPRSS2-L, 5'-caccaccagctattggacct-3'; and RT-TMPRSS2-R, 5'-acacgcatcacaccagtta-3'. The PCR product size was 390 bp. The *ACTB* and *GDPDH* genes were used as the internal controls. All experiments were repeated three times.

## 5. Conclusions

The *TMPRSS2* gene is highly expressed in cancer tissues, specifically in PRAD tumors, implying susceptibility to SARS-CoV-2 and severity for COVID-19. *TMPRSS2* mutations may be a prognostic marker for long survival rates in pan-cancers. This is the first study to demonstrate that the small molecules CD, AD, TQ, and TQFL12 inhibit *TMPRSS2* expression, which may have therapeutic roles via targeting *TMPRSS2* to prevent SARS-CoV-2 invasion in cancer patients during the COVID-19 pandemic.

**Author Contributions:** J.F. (Jiewen Fu), S.L., B.S., K.G., Q.T., Z.L., J.Q., T.L., J.D., D.L., L.Z., J.H., B.Z., H.C., X.L., J.C. and J.F. (Junjiang Fu) collected and analyzed the data as well as performed cell culture, Western blotting, RT-PCR, and IHC. J.F. (Junjiang Fu) and J.C. designed the study. J.F. (Junjiang Fu) and T.H. supervised the study. J.F. (Junjiang Fu) and S.F. wrote and edited the manuscript. All authors have read and agreed to the published version of the manuscript.

**Funding:** This research was funded by the National Natural Science Foundation of China (grant nos. 81672887, 82073263, and 30371493), the Foundation of Science and Technology Department of Sichuan Province (grant nos. 2022NSFSC0737), the Foundation of Southwest Medical University (grant nos. 2021ZKMS004 and 2021ZKQN109), and the Research Foundation of Luzhou City (grant no. 2021-SYF-37).

**Institutional Review Board Statement:** The present study was approved by the Ethics Committee of Southwest Medical University. Informed consent was obtained from patients.

**Informed Consent Statement:** Informed consent was obtained from all subjects involved in the study.

**Data Availability Statement:** Not applicable.

**Acknowledgments:** We thank the people from the Research Center for Preclinical Medicine, Southwest Medical University.

**Conflicts of Interest:** The authors declare no conflict of interest.

## References

1. Paoloni-Giacobino, A.; Chen, H.; Peitsch, M.C.; Rossier, C.; Antonarakis, S.E. Cloning of the *TMPRSS2* gene, which encodes a novel serine protease with transmembrane, LDLRA, and SRCR domains and maps to 21q22.3. *Genomics* **1997**, *44*, 309–320. [[CrossRef](#)] [[PubMed](#)]
2. Lucas, J.M.; Heinlein, C.; Kim, T.; Hernandez, S.A.; Malik, M.S.; True, L.D.; Morrissey, C.; Corey, E.; Montgomery, B.; Mostaghel, E.; et al. The androgen-regulated protease *TMPRSS2* activates a proteolytic cascade involving components of the tumor microenvironment and promotes prostate cancer metastasis. *Cancer Discov.* **2014**, *4*, 1310–1325. [[CrossRef](#)] [[PubMed](#)]
3. Ko, C.J.; Huang, C.C.; Lin, H.Y.; Juan, C.P.; Lan, S.W.; Shyu, H.Y.; Wu, S.R.; Hsiao, P.W.; Huang, H.P.; Shun, C.T.; et al. Androgen-Induced *TMPRSS2* Activates Matriptase and Promotes Extracellular Matrix Degradation, Prostate Cancer Cell Invasion, Tumor Growth, and Metastasis. *Cancer Res.* **2015**, *75*, 2949–2960. [[CrossRef](#)] [[PubMed](#)]
4. Wilson, S.; Greer, B.; Hooper, J.; Zijlstra, A.; Walker, B.; Quigley, J.; Hawthorne, S. The membrane-anchored serine protease, *TMPRSS2*, activates PAR-2 in prostate cancer cells. *Biochem. J.* **2005**, *388 Pt 3*, 967–972. [[CrossRef](#)] [[PubMed](#)]
5. Tomlins, S.A.; Rhodes, D.R.; Perner, S.; Dhanasekaran, S.M.; Mehra, R.; Sun, X.W.; Varambally, S.; Cao, X.; Tchinda, J.; Kuefer, R.; et al. Recurrent fusion of *TMPRSS2* and ETS transcription factor genes in prostate cancer. *Science* **2005**, *310*, 644–648. [[CrossRef](#)] [[PubMed](#)]

6. Ishak, A.; Mehendale, M.; AlRawashdeh, M.M.; Sestacovschi, C.; Sharath, M.; Pandav, K.; Marzban, S. The association of COVID-19 severity and susceptibility and genetic risk factors: A systematic review of the literature. *Gene* **2022**, *836*, 146674. [[CrossRef](#)]
7. Zipeto, D.; Palmeira, J.D.F.; Arganaraz, G.A.; Arganaraz, E.R. ACE2/ADAM17/TMPRSS2 Interplay May Be the Main Risk Factor for COVID-19. *Front. Immunol.* **2020**, *11*, 576745. [[CrossRef](#)]
8. Heurich, A.; Hofmann-Winkler, H.; Gierer, S.; Liepold, T.; Jahn, O.; Pohlmann, S. TMPRSS2 and ADAM17 cleave ACE2 differentially and only proteolysis by TMPRSS2 augments entry driven by the severe acute respiratory syndrome coronavirus spike protein. *J. Virol.* **2014**, *88*, 1293–1307. [[CrossRef](#)]
9. Hoffmann, M.; Kleine-Weber, H.; Schroeder, S.; Kruger, N.; Herrler, T.; Erichsen, S.; Schiergens, T.S.; Herrler, G.; Wu, N.H.; Nitsche, A.; et al. SARS-CoV-2 Cell Entry Depends on ACE2 and TMPRSS2 and Is Blocked by a Clinically Proven Protease Inhibitor. *Cell* **2020**, *181*, 271–280.e8. [[CrossRef](#)]
10. Shulla, A.; Heald-Sargent, T.; Subramanya, G.; Zhao, J.; Perlman, S.; Gallagher, T. A transmembrane serine protease is linked to the severe acute respiratory syndrome coronavirus receptor and activates virus entry. *J. Virol.* **2011**, *85*, 873–882. [[CrossRef](#)]
11. Li, W.; Moore, M.J.; Vasilieva, N.; Sui, J.; Wong, S.K.; Berne, M.A.; Somasundaran, M.; Sullivan, J.L.; Luzuriaga, K.; Greenough, T.C.; et al. Angiotensin-converting enzyme 2 is a functional receptor for the SARS coronavirus. *Nature* **2003**, *426*, 450–454. [[CrossRef](#)] [[PubMed](#)]
12. Shrimp, J.H.; Janiszewski, J.; Chen, C.Z.; Xu, M.; Wilson, K.M.; Kales, S.C.; Sanderson, P.E.; Shinn, P.; Schneider, R.; Itkin, Z.; et al. Suite of TMPRSS2 Assays for Screening Drug Repurposing Candidates as Potential Treatments of COVID-19. *ACS Infect. Dis.* **2022**, *8*, 1191–1203. [[CrossRef](#)] [[PubMed](#)]
13. Abbasi, A.Z.; Kiyani, D.A.; Hamid, S.M.; Saalim, M.; Fahim, A.; Jalal, N. Spiking dependence of SARS-CoV-2 pathogenicity on TMPRSS2. *J. Med. Virol.* **2021**, *93*, 4205–4218. [[CrossRef](#)] [[PubMed](#)]
14. Vitello, G.A.; Federico, C.; Bruno, F.; Vinci, M.; Musumeci, A.; Ragalmuto, A.; Sturiale, V.; Brancato, D.; Cali, F.; Saccone, S. Allelic Variations in the Human Genes TMPRSS2 and CCR5, and the Resistance to Viral Infection by SARS-CoV-2. *Int. J. Mol. Sci.* **2022**, *23*, 9171. [[CrossRef](#)]
15. Ravikanth, V.; Sasikala, M.; Naveen, V.; Latha, S.S.; Parsa, K.V.L.; Vijayasathy, K.; Amanchy, R.; Avanthi, S.; Govardhan, B.; Rakesh, K.; et al. A variant in TMPRSS2 is associated with decreased disease severity in COVID-19. *Meta Gene* **2021**, *29*, 100930. [[CrossRef](#)]
16. David, A.; Parkinson, N.; Peacock, T.P.; Pairo-Castineira, E.; Khanna, T.; Cobat, A.; Tenesa, A.; Sancho-Shimizu, V.; Gen, O.C.; Investigators, I.C.; et al. A common TMPRSS2 variant has a protective effect against severe COVID-19. *Curr. Res. Transl. Med.* **2022**, *70*, 103333. [[CrossRef](#)]
17. Mahgoub, M.A.; Alnaem, A.; Fadllemola, M.; Abo-Idris, M.; Makki, A.A.; Abdelgadir, A.A.; Alzain, A.A. Discovery of novel potential inhibitors of TMPRSS2 and Mpro of SARS-CoV-2 using E-pharmacophore and docking-based virtual screening combined with molecular dynamic and quantum mechanics. *J. Biomol. Struct. Dyn.* **2022**, 1–14. [[CrossRef](#)]
18. Maio, F.; Rullo, M.; de Candia, M.; Purgatorio, R.; Lopopolo, G.; Santarelli, G.; Palmieri, V.; Papi, M.; Elia, G.; De Candia, E.; et al. Evaluation of Novel Guanidino-Containing Isonipecotamide Inhibitors of Blood Coagulation Factors against SARS-CoV-2 Virus Infection. *Viruses* **2022**, *14*, 1730. [[CrossRef](#)]
19. Kundu, D.; Selvaraj, C.; Singh, S.K.; Dubey, V.K. Identification of new anti-nCoV drug chemical compounds from Indian spices exploiting SARS-CoV-2 main protease as target. *J. Biomol. Struct. Dyn.* **2021**, *39*, 3428–3434.
20. Cheng, J.; Zhou, J.; Fu, S.; Fu, J.; Zhou, B.; Chen, H.; Fu, J.; Wei, C. Prostate adenocarcinoma and COVID-19: The possible impacts of TMPRSS2 expressions in susceptibility to SARS-CoV-2. *J. Cell. Mol. Med.* **2021**, *25*, 4157–4165. [[CrossRef](#)]
21. Manjunathan, R.; Periyaswami, V.; Mitra, K.; Rosita, A.S.; Pandya, M.; Selvaraj, J.; Ravi, L.; Devarajan, N.; Doble, M. Molecular docking analysis reveals the functional inhibitory effect of Genistein and Quercetin on TMPRSS2: SARS-CoV-2 cell entry facilitator spike protein. *BMC Bioinform.* **2022**, *23*, 180. [[CrossRef](#)] [[PubMed](#)]
22. Liu, X.; Liu, B.; Shang, Y.; Cao, P.; Hou, J.; Chen, F.; Zhang, B.; Fan, Y.; Tan, K. Decreased TMPRSS2 expression by SARS-CoV-2 predicts the poor prognosis of lung cancer patients through metabolic pathways and immune infiltration. *Aging* **2022**, *14*, 73–108. [[CrossRef](#)] [[PubMed](#)]
23. Melms, J.C.; Biermann, J.; Huang, H.; Wang, Y.; Nair, A.; Tagore, S.; Katsyv, I.; Rendeiro, A.F.; Amin, A.D.; Schapiro, D.; et al. A molecular single-cell lung atlas of lethal COVID-19. *Nature* **2021**, *595*, 114–119. [[CrossRef](#)] [[PubMed](#)]
24. Cao, W.; Feng, Q.; Wang, X. Computational analysis of TMPRSS2 expression in normal and SARS-CoV-2-infected human tissues. *Chem. Biol. Interact.* **2021**, *346*, 109583. [[CrossRef](#)]
25. Bao, R.; Hernandez, K.; Huang, L.; Luke, J.J. ACE2 and TMPRSS2 expression by clinical, HLA, immune, and microbial correlates across 34 human cancers and matched normal tissues: Implications for SARS-CoV-2 COVID-19. *J. Immunother. Cancer* **2020**, *8*, e001020. [[CrossRef](#)]
26. Ravaioli, S.; Tebaldi, M.; Fonzi, E.; Angeli, D.; Mazza, M.; Nicolini, F.; Lucchesi, A.; Fanini, F.; Pirini, F.; Tumedei, M.M.; et al. ACE2 and TMPRSS2 Potential Involvement in Genetic Susceptibility to SARS-CoV-2 in Cancer Patients. *Cell Transplant.* **2020**, *29*, 0963689720968749. [[CrossRef](#)]
27. Fu, J.; Zhou, B.; Zhang, L.; Balaji, K.S.; Wei, C.; Liu, X.; Chen, H.; Peng, J.; Fu, J. Expressions and significances of the angiotensin-converting enzyme 2 gene, the receptor of SARS-CoV-2 for COVID-19. *Mol. Biol. Rep.* **2020**, *47*, 4383–4392. [[CrossRef](#)]

28. Choudhary, S.; Sreenivasulu, K.; Mitra, P.; Misra, S.; Sharma, P. Role of Genetic Variants and Gene Expression in the Susceptibility and Severity of COVID-19. *Ann. Lab. Med.* **2021**, *41*, 129–138. [[CrossRef](#)]
29. Matsuyama, S.; Nao, N.; Shirato, K.; Kawase, M.; Saito, S.; Takayama, I.; Nagata, N.; Sekizuka, T.; Katoh, H.; Kato, F.; et al. Enhanced isolation of SARS-CoV-2 by TMPRSS2-expressing cells. *Proc. Natl. Acad. Sci. USA* **2020**, *117*, 7001–7003. [[CrossRef](#)]
30. Zang, R.; Gomez Castro, M.F.; McCune, B.T.; Zeng, Q.; Rothlauf, P.W.; Sonnek, N.M.; Liu, Z.; Brulois, K.F.; Wang, X.; Greenberg, H.B.; et al. TMPRSS2 and TMPRSS4 promote SARS-CoV-2 infection of human small intestinal enterocytes. *Sci. Immunol.* **2020**, *5*, eabc3582. [[CrossRef](#)]
31. Montopoli, M.; Zumerle, S.; Vettor, R.; Rugge, M.; Zorzi, M.; Catapano, C.V.; Carbone, G.M.; Cavalli, A.; Pagano, F.; Ragazzi, E.; et al. Androgen-deprivation therapies for prostate cancer and risk of infection by SARS-CoV-2: A population-based study (N = 4532). *Ann. Oncol. Off. J. Eur. Soc. Med. Oncol.* **2020**, *31*, 1040–1045. [[CrossRef](#)] [[PubMed](#)]
32. Muralidar, S.; Gopal, G.; Visaga Ambi, S. Targeting the viral-entry facilitators of SARS-CoV-2 as a therapeutic strategy in COVID-19. *J. Med. Virol.* **2021**, *93*, 5260–5276. [[CrossRef](#)]
33. Wettstein, L.; Kirchhoff, F.; Munch, J. The Transmembrane Protease TMPRSS2 as a Therapeutic Target for COVID-19 Treatment. *Int. J. Mol. Sci.* **2022**, *23*, 1351. [[CrossRef](#)] [[PubMed](#)]
34. Mahmoud, I.S.; Jarrar, Y.B. Targeting the intestinal TMPRSS2 protease to prevent SARS-CoV-2 entry into enterocytes-prospects and challenges. *Mol. Biol. Rep.* **2021**, *48*, 4667–4675. [[CrossRef](#)] [[PubMed](#)]
35. Varughese, J.K.; Kavitha, J.; Sindhu, K.S.; Dhiya, F.; Joseph Libin, K.L.; Abi, T.G. Identification of some dietary flavonoids as potential inhibitors of TMPRSS2 through protein-ligand interaction studies and binding free energy calculations. *Struct. Chem.* **2022**, *33*, 1489–1502. [[CrossRef](#)]
36. Shapira, T.; Monreal, I.A.; Dion, S.P.; Buchholz, D.W.; Imbiakha, B.; Olmstead, A.D.; Jager, M.; Desilets, A.; Gao, G.; Martins, M.; et al. A TMPRSS2 inhibitor acts as a pan-SARS-CoV-2 prophylactic and therapeutic. *Nature* **2022**, *605*, 340–348. [[CrossRef](#)]
37. Geiger, J.D.; Khan, N.; Murugan, M.; Boison, D. Possible Role of Adenosine in COVID-19 Pathogenesis and Therapeutic Opportunities. *Front. Pharmacol.* **2020**, *11*, 594487. [[CrossRef](#)]
38. Wei, C.; Zou, H.; Xiao, T.; Liu, X.; Wang, Q.; Cheng, J.; Fu, S.; Peng, J.; Xie, X.; Fu, J. TQFL12, a novel synthetic derivative of TQ, inhibits triple-negative breast cancer metastasis and invasion through activating AMPK/ACC pathway. *J. Cell. Mol. Med.* **2021**, *25*, 10101–10110. [[CrossRef](#)]
39. Khan, M.A.; Tania, M.; Wei, C.; Mei, Z.; Fu, S.; Cheng, J.; Xu, J.; Fu, J. Thymoquinone inhibits cancer metastasis by downregulating TWIST1 expression to reduce epithelial to mesenchymal transition. *Oncotarget* **2015**, *6*, 19580–19591. [[CrossRef](#)]
40. Mir, P.A.; Mohi-Ud-Din, R.; Banday, N.; Maqbool, M.; Raza, S.N.; Farooq, S.; Afzal, S.; Mir, R.H. Anticancer Potential of Thymoquinone: A Novel Bioactive Natural Compound from *Nigella sativa* L. *Anti-Cancer Agents Med. Chem.* **2022**, *22*, 3401–3415. [[CrossRef](#)]
41. Zhou, J.; Imani, S.; Shasaltaneh, M.D.; Liu, S.; Lu, T.; Fu, J. PIK3CA hotspot mutations p. H1047R and p. H1047L sensitize breast cancer cells to thymoquinone treatment by regulating the PI3K/Akt1 pathway. *Mol. Biol. Rep.* **2022**, *49*, 1799–1816. [[CrossRef](#)] [[PubMed](#)]
42. Kim, J.; Shin, J.Y.; Choi, Y.H.; Lee, S.Y.; Jin, M.H.; Kim, C.D.; Kang, N.G.; Lee, S. Adenosine and Cordycepin Accelerate Tissue Remodeling Process through Adenosine Receptor Mediated Wnt/beta-Catenin Pathway Stimulation by Regulating GSK3b Activity. *Int. J. Mol. Sci.* **2021**, *22*, 5571. [[CrossRef](#)] [[PubMed](#)]
43. Tang, Z.; Li, C.; Kang, B.; Gao, G.; Li, C.; Zhang, Z. GEPIA: A web server for cancer and normal gene expression profiling and interactive analyses. *Nucleic Acids Res.* **2017**, *45*, W98–W102. [[CrossRef](#)] [[PubMed](#)]
44. Uhlen, M.; Fagerberg, L.; Hallstrom, B.M.; Lindskog, C.; Oksvold, P.; Mardinoglu, A.; Sivertsson, A.; Kampf, C.; Sjostedt, E.; Asplund, A.; et al. Tissue-based map of the human proteome. *Science* **2015**, *347*, 1260419. [[CrossRef](#)]
45. Uhlen, M.; Zhang, C.; Lee, S.; Sjostedt, E.; Fagerberg, L.; Bidkhor, G.; Benfeitas, R.; Arif, M.; Liu, Z.; Edfors, F.; et al. A pathology atlas of the human cancer transcriptome. *Science* **2017**, *357*, eaan2507. [[CrossRef](#)]
46. Wang, K.; Deng, H.; Song, B.; He, J.; Liu, S.; Fu, J.; Zhang, L.; Li, D.; Balaji, K.S.; Mei, Z.; et al. The Correlation Between Immune Invasion and SARS-CoV-2 Entry Protein ADAM17 in Cancer Patients by Bioinformatic Analysis. *Front. Immunol.* **2022**, *13*, 923516. [[CrossRef](#)]
47. Zhang, L.; Wei, C.; Li, D.; He, J.; Liu, S.; Deng, H.; Cheng, J.; Du, J.; Liu, X.; Chen, H.; et al. COVID-19 receptor and malignant cancers: Association of CTSL expression with susceptibility to SARS-CoV-2. *Int. J. Biol. Sci.* **2022**, *18*, 2362–2371. [[CrossRef](#)]
48. Li, D.; Liu, X.; Zhang, L.; He, J.; Chen, X.; Liu, S.; Fu, J.; Fu, S.; Chen, H.; Fu, J.; et al. COVID-19 disease and malignant cancers: The impact for the furin gene expression in susceptibility to SARS-CoV-2. *Int. J. Biol. Sci.* **2021**, *17*, 3954–3967. [[CrossRef](#)]
49. Wei, C.; Liu, Y.; Liu, X.; Cheng, J.; Fu, J.; Xiao, X.; Moses, R.E.; Li, X.; Fu, J. The speckle-type POZ protein (SPOP) inhibits breast cancer malignancy by destabilizing TWIST1. *Cell Death Discov.* **2022**, *8*, 389. [[CrossRef](#)]